

WIS Code
County Use
Sewer No. N/A
Water No. EIG

This Subdivision is subject to Middle Patuxent Ad Valorem Tax and Middle Patuxent In-Aid of Construction charges.

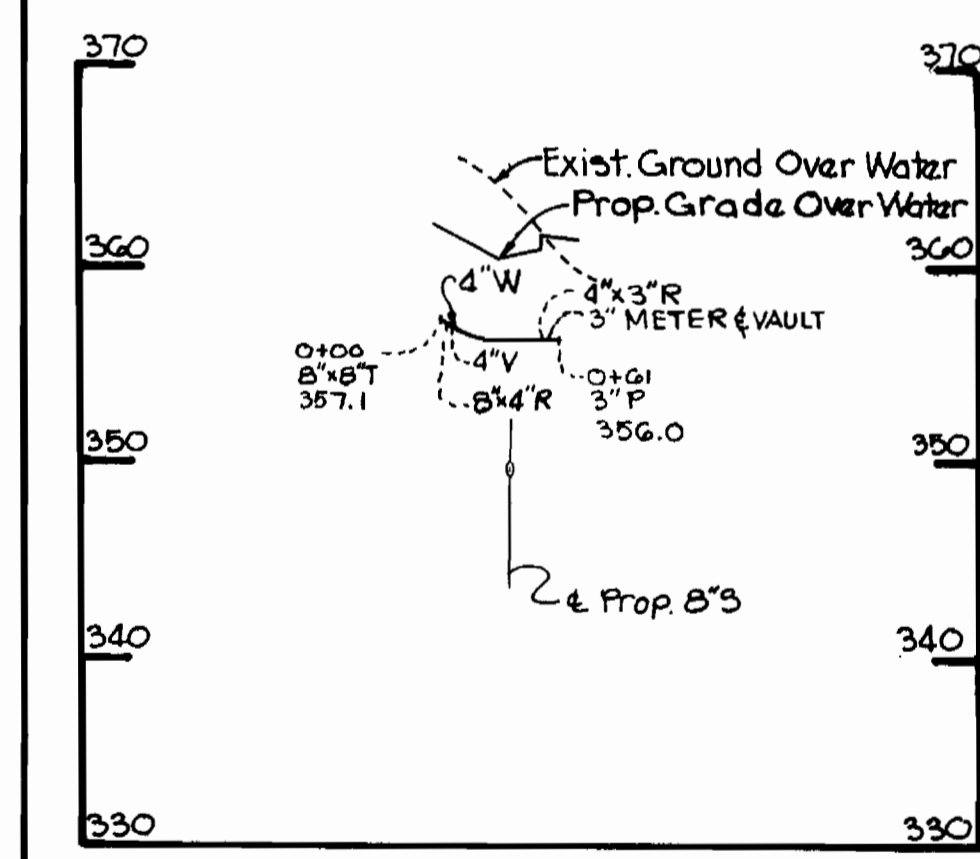
VICINITY MAP
SCALE: 1"=600'

GENERAL NOTES

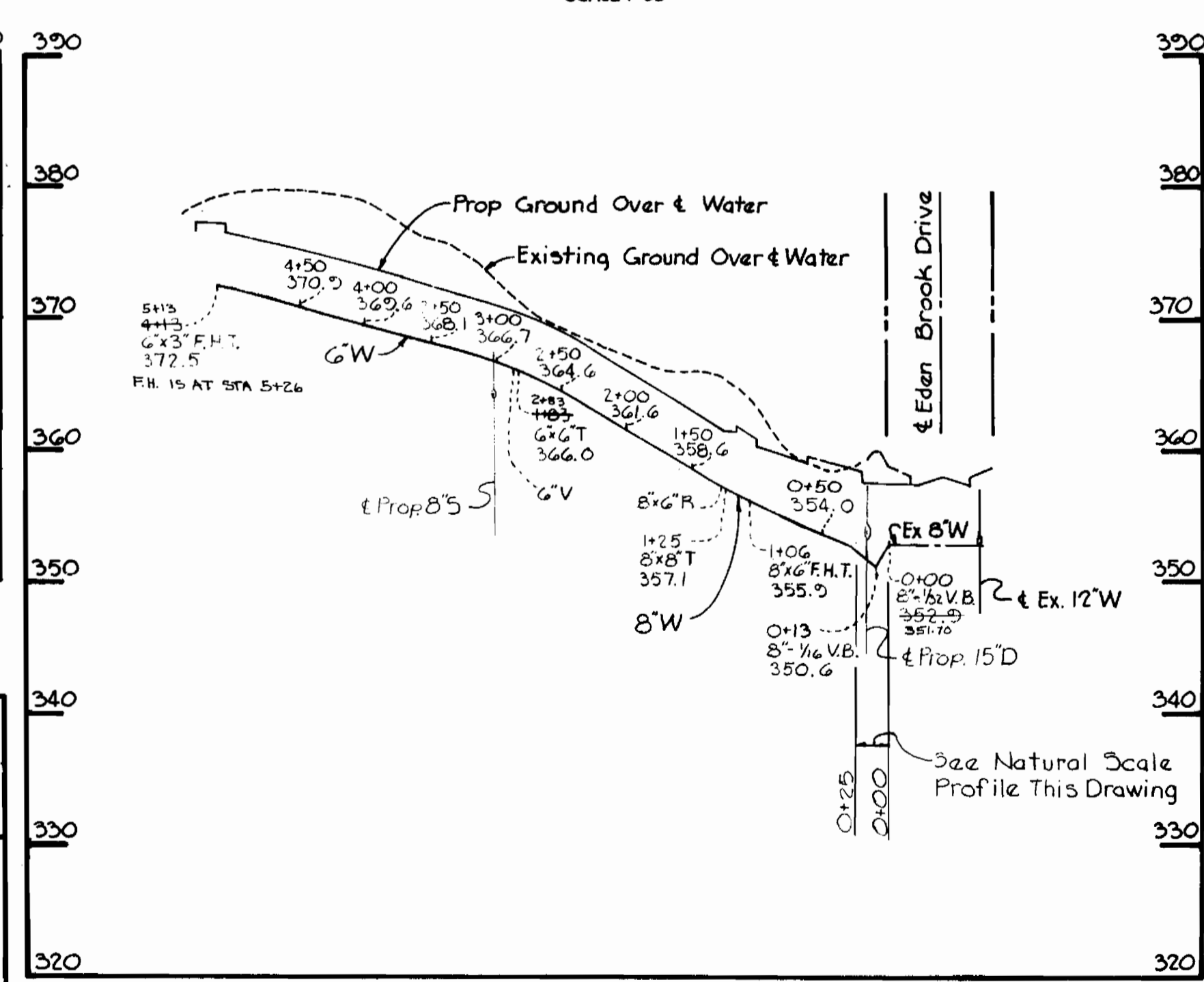
- Approximate location of existing mains are shown. The Contractor shall take all necessary precautions to protect existing mains and services and maintain uninterrupted supply. Any damage incurred shall be repaired immediately to the satisfaction of the Engineer at the Contractor's expense.
- All horizontal controls are based on Maryland State Coordinates.
- All vertical controls are based on U.S.G.S. Datum.
- All pipe elevations shown are invert elevations.
- Clear all utilities by a minimum of 6". Clear all poles by 2'-0" minimum or tunnel as required. Any cost incurred the Contractor for tunnelling or bracing at poles shall be included in unit prices bid for excavation and backfill.
- For details not shown on the drawings use Howard County Standard Details.
- For materials and construction methods use Howard County Standard Specifications.
- Contractor shall locate existing utilities a minimum of two (2) weeks in advance of construction operations in the vicinity of proposed utilities at his own expense.
- Contractor shall notify the following utilities or agencies at least five (5) working days before starting work shown on this plan:
 - a. State Highway Administration 531-5533
 - b. Baltimore Gas and Electric Company 685-0123
 - c. Baltimore Gas and Electric Company 685-0123
 - d. Engineering - "Damage Control" 234-5621
 - e. "Miss Utility" 1-553-0100
 - f. Chesapeake and Potomac Telephone Company 725-2976
 - g. American Telephone and Telegraph cable Location Division 393-3553
 - h. Colonial Pipeline Company 781-4641
 - i. Bureau of Utilities Howard County 992-2366
- Trees are to be protected from damage to maximum extent. Trees located within the construction strip are not to be removed or damaged by the Contractor.
- Contractor shall remove trees, stumps and roots along line of excavation as directed by the Engineer. Payment for such removal shall be included in the unit price bid for excavation and backfill.
- Place regulation "Men Working" and warning signs as required to comply with Maryland State Highway Administration Manual of Traffic Control for Highway Construction and Maintenance Operations.
- All water mains to be C.I.P. or D.I.P. unless otherwise noted.
- Top of all water mains to have a minimum of 3'-1/2" cover unless noted.
- Valves adjacent to trees shall be strapped to trees.
- Block all fittings with concrete.
- Bury line elevations on fire hydrants shall be set to the elevations shown on the drawing. All fire hydrants shall be strapped and buttressed with concrete in accordance with standard details. Soil around the fire hydrant to be compacted in accordance with Section 515 of the Standard Specifications.
- The Contractor shall not operate any water main valves on the existing system.
- Water meter vaults shall conform with the Howard County Standard detail No. W.3.G4.

BENCH MARKS
BM #1 Elev. 371.64
Top of existing fire hydrant opposite Sta 30+00 of Eden Brook Drive.
BM #2 Elev. 340.27
Cut set and painted on metal strip of inlet located on NE corner of Sweet Hours Way and Eden Brook Drive.

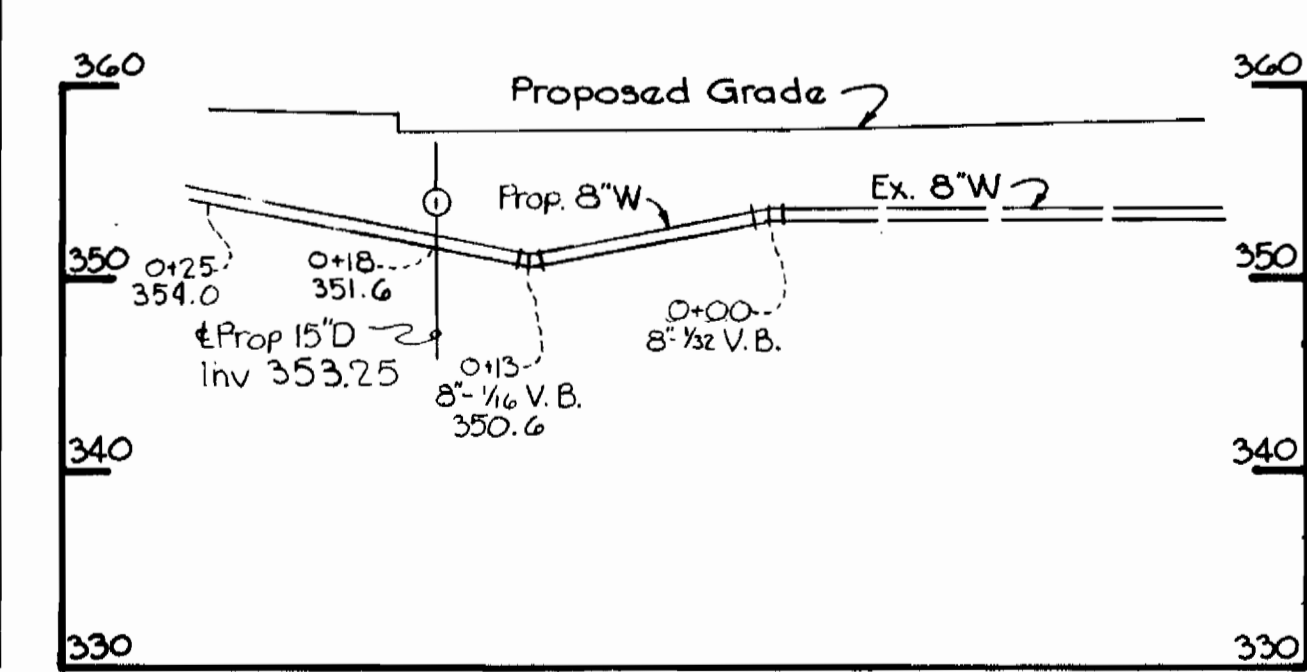
PLAN
SCALE: 1"=50'



PROFILE
SCALE: H 1"=10'
V 1"=10'



PROFILE
SCALE: H 1"=10'
V 1"=10'



PROFILE
SCALE: H 1"=10'
V 1"=10'

SEDIMENT CONTROL MEASURES FOR THIS CONTRACT WILL BE IMPLEMENTED IN ACCORDANCE WITH ARTICLE 15 OF SPECIFICATIONS AND FINAL PLAN # 5DP-82-49c

HOWARD SOIL CONSERVATION DISTRICT REVIEWED FOR HOWARD SOIL CONSERVATION DISTRICT AND MEETS TECHNICAL REQUIREMENTS
DATE: 1-27-82
THIS PLAN IS APPROVED FOR SOIL EROSION AND SEDIMENT CONTROL BY THE HOWARD SOIL CONSERVATION DISTRICT
DATE: 1-27-82

RIEMER-TRACY & ASSOCIATES, INC.
8659 BALTIMORE NATIONAL PIKE
ELLCOTT CITY, MARYLAND 21043
LAND PLANNING DESIGN & CIVIL ENGINEERING

DEPARTMENT OF PUBLIC WORKS
HOWARD COUNTY, MARYLAND
CHIEF, LAND DEVELOPMENT DIVISION
DATE: 2-3-82
CHIEF BUREAU OF ENGINEERING
DATE: 2-1-82
CHIEF BUREAU OF UTILITIES
DATE: 2-1-82

CONTRACT NO. 44-1022-D
PLAN AND PROFILE OF A WATER MAIN

COLUMBIA VILLAGE OF KINGS CONTRIVANCE ELECTION DISTRICT GUILFORD NO. 6

DRAWING NO. 1 OF 1
SCALE AS SHOWN
DATE: 10-13-81
DATE: JULY, 1983

