







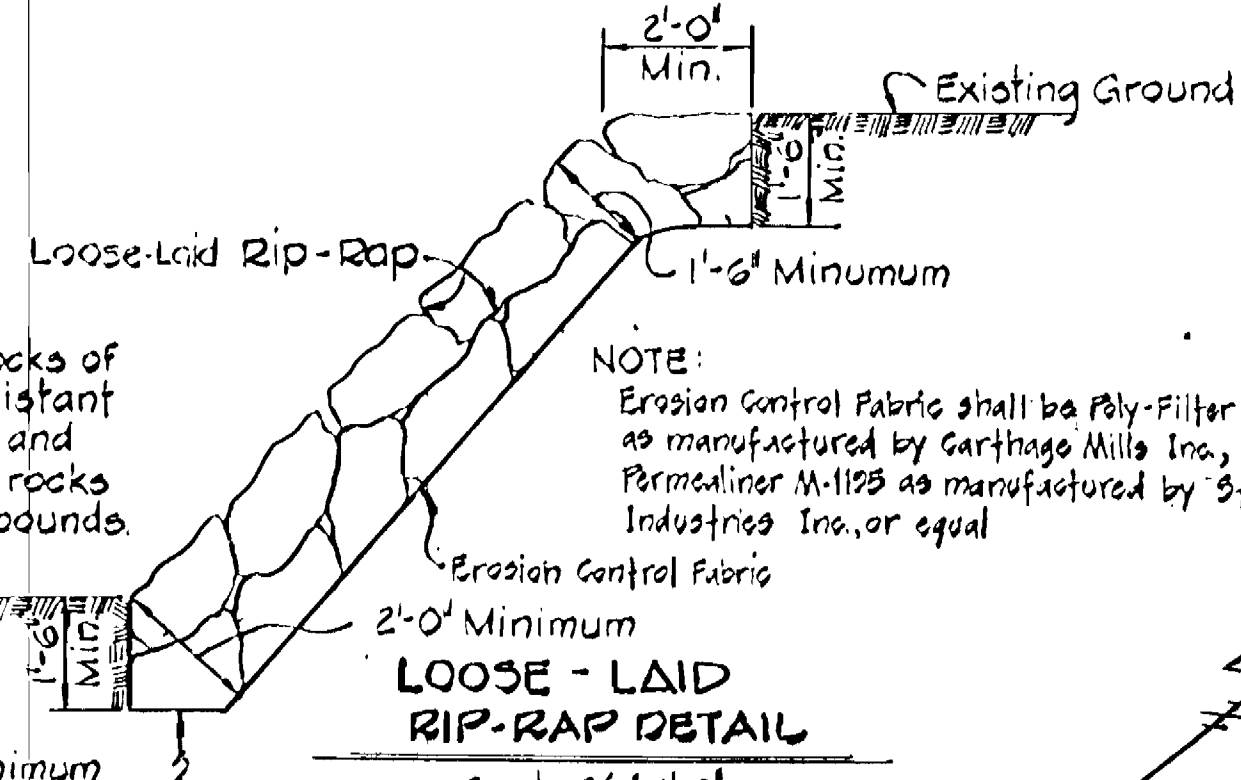


**BENCH MARKS**

- B.M. 'A-B'** Elev. 254.45  
3 Cut nails in 1 1/2" poplar 21' northwest of P.O.L. 3x20 (between P.I.'s T-4/T-3)
- B.M. O-1** Elev. 262.20  
2 Nails set in 10' poplar 11' northwest P.I.' T-3-1'
- B.M. O-2** Elev. 279.68  
2 Nails in 8' pine 12.52' south of P.I.' T-3-2'
- B.M. O-3** Elev. 268.67  
1 Nail set in root of 24' triple maple, 15.3' northwest of P.I.' T-3-3'
- B.M. O-4** Elev. 293.15  
3 Cut nails set in 4' poplar 23.5' southeast of P.I.' T-3-4'
- B.M. 'E-E'** Elev. 237.07  
3 Cut nails 12' Oak 16.5' northwest of P.I.' T-7'
- B.M. 'F-F'** Elev. 233.34  
3 Cut nails 12' wild cherry 16.5' northwest of P.I.' T-8'

Rip-Rap to consist of dense rocks of random shapes and sizes, resistant to the action of air and water, and suitable for bank protection. All rocks shall weigh a minimum of 100 pounds.

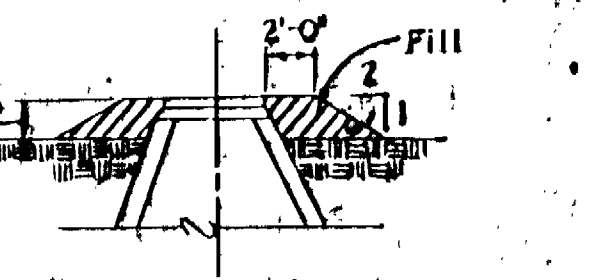
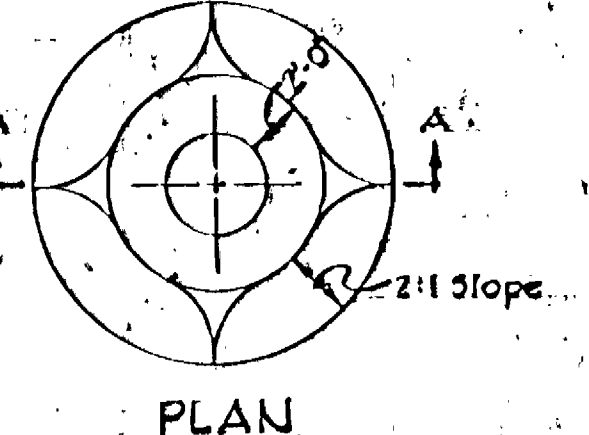
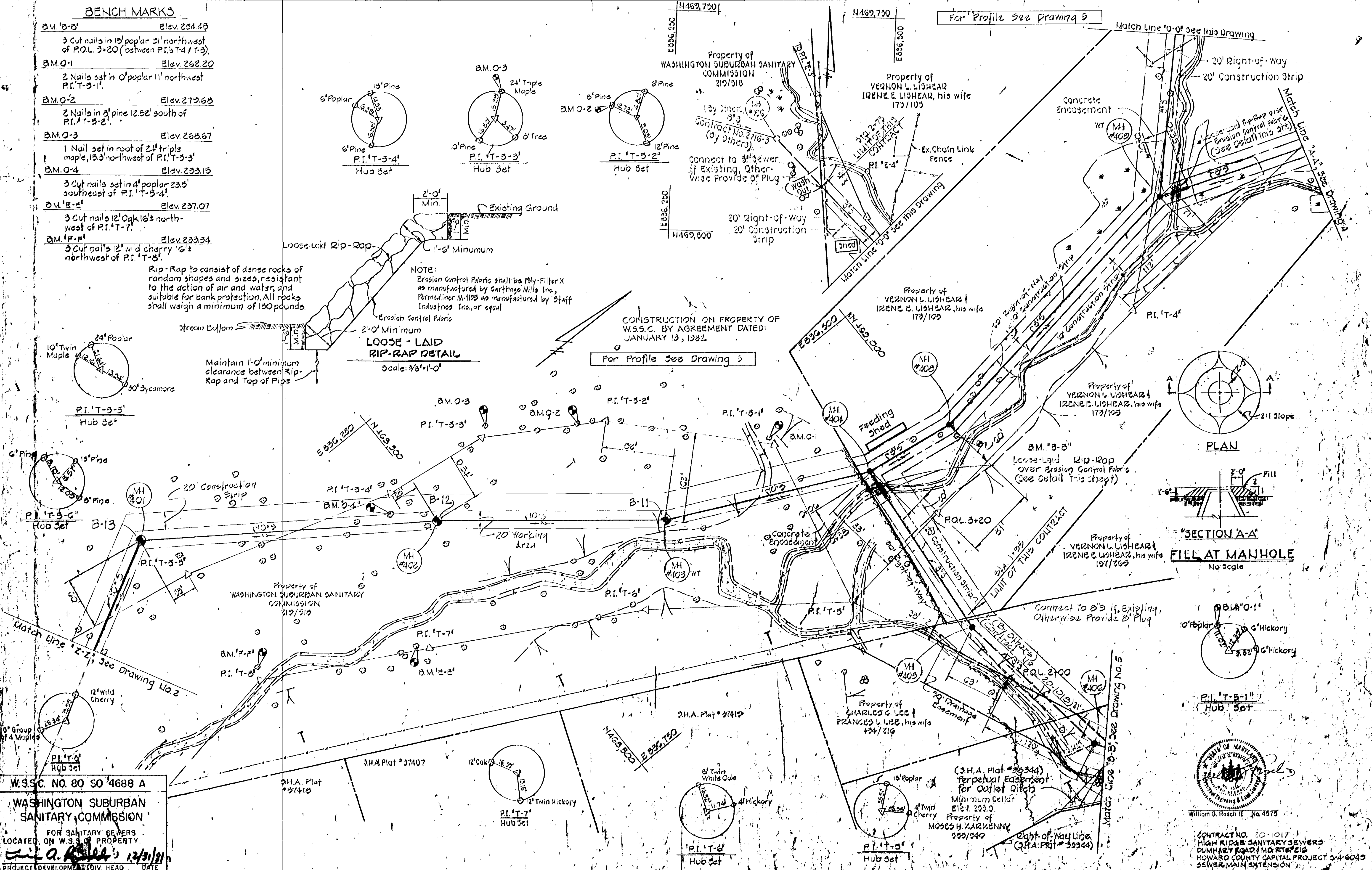
**NOTE:**  
Erosion Control Fabric shall be Poly-Filter X as manufactured by Garthage Mills Inc., Permealiner M-1125 as manufactured by Staff Industries Inc., or equal



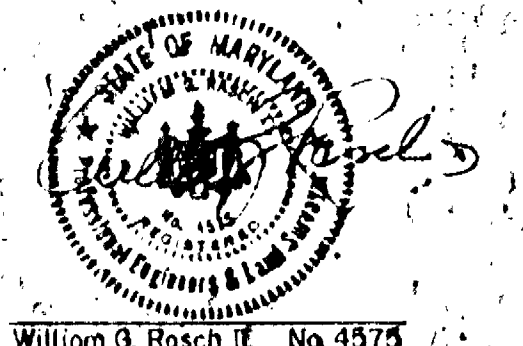
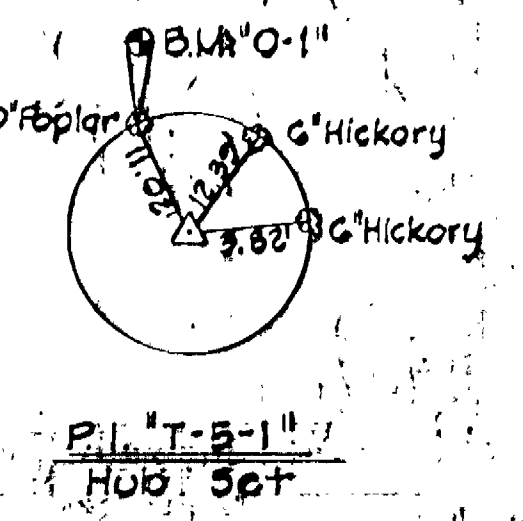
Maintain 1'-0" minimum clearance between Rip-Rap and Top of Pipe

CONSTRUCTION ON PROPERTY OF W.S.S.C. BY AGREEMENT DATED: JANUARY 13, 1932

For Profile See Drawing 5



"SECTION A-A" FILL AT MANHOLE  
No Scale



CONTRACT NO. 20-1017  
HIGH RIDGE SANITARY SEWERS  
SECTION DISTRICT NO. 8  
HOWARD COUNTY, MARYLAND  
HOWARD COUNTY CAPITAL PROJECT 3-4-6045  
SEWER MAIN EXTENSION

W.S.S.C. NO. 80 50 4688 A  
**WASHINGTON SUBURBAN SANITARY COMMISSION**  
FOR SANITARY SEWERS LOCATED ON W.S.S.C. PROPERTY  
W. A. R. 12/31/31  
PROJECT DEVELOPMENT DIV. HEAD DATE

**RURDUM & JESCHKE**  
ENGINEERS  
100 N. CALVERT ST.  
BALTIMORE, MARYLAND

**DEPARTMENT OF PUBLIC WORKS**  
HOWARD COUNTY, MARYLAND  
3-11-31  
DIRECTOR OF PUBLIC WORKS DATE CHIEF BUREAU OF ENGINEERING DATE

CONTRACT NO. 20-1017  
CAPITAL PROJECT NO. 54-1017

PLAN AND DETAILS OF SEWER MAINS

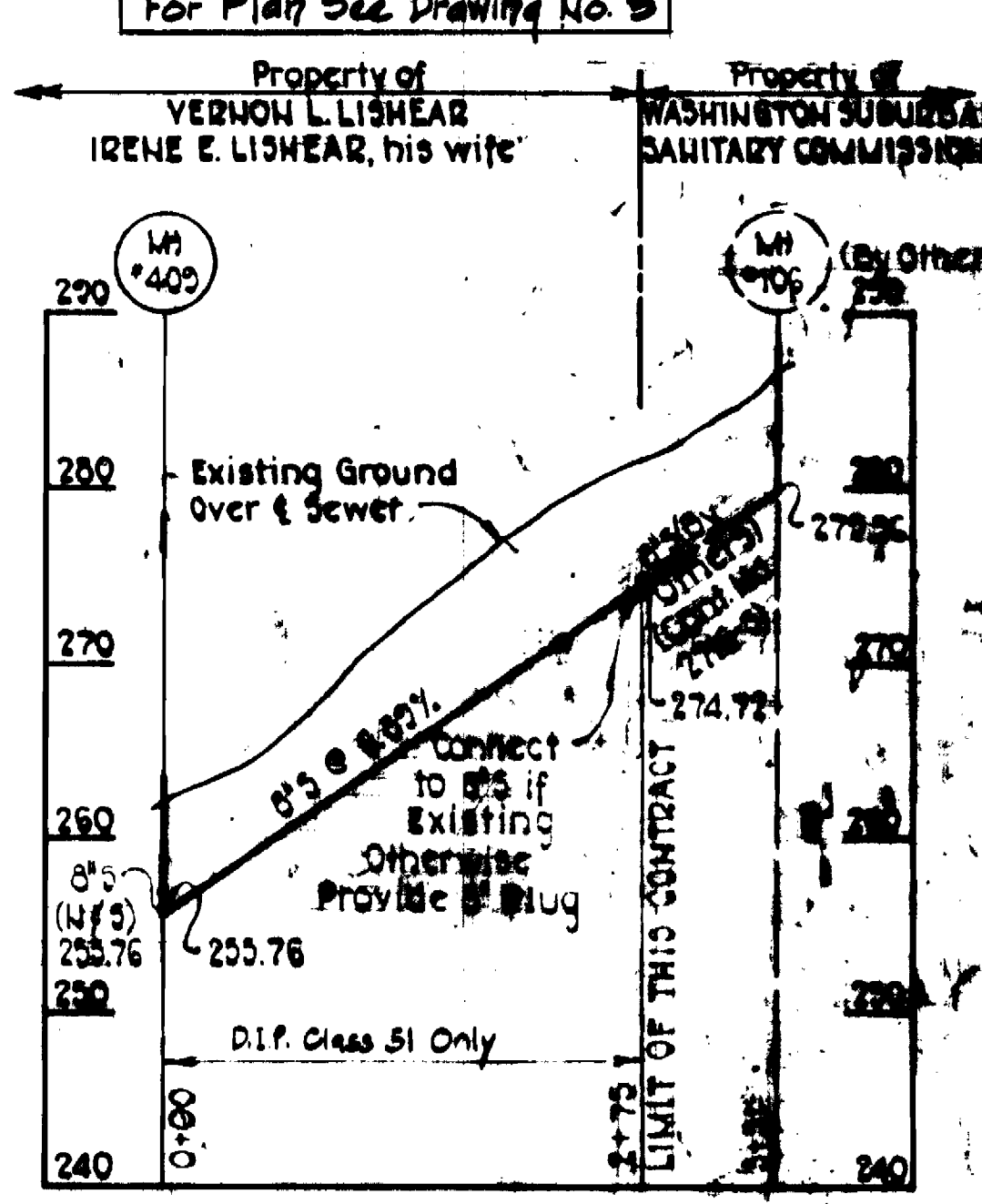
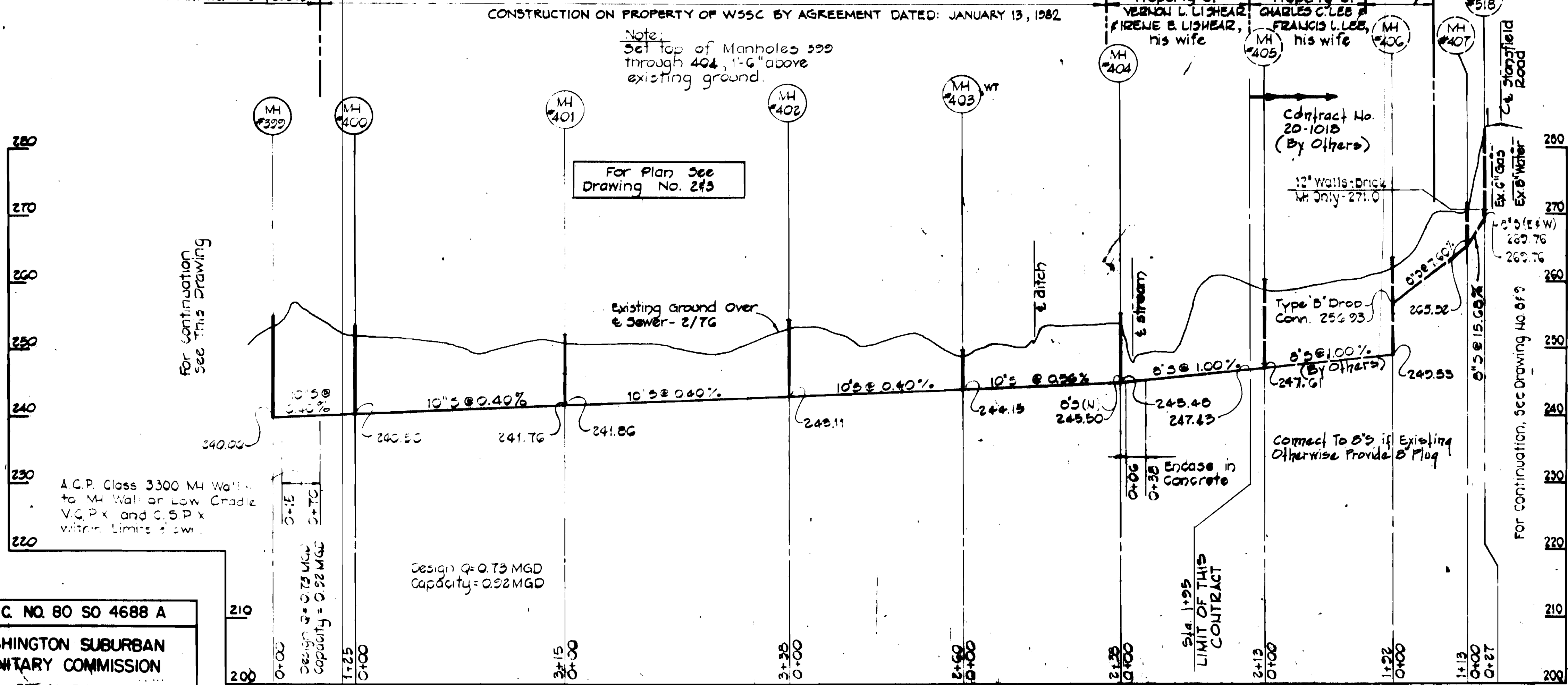
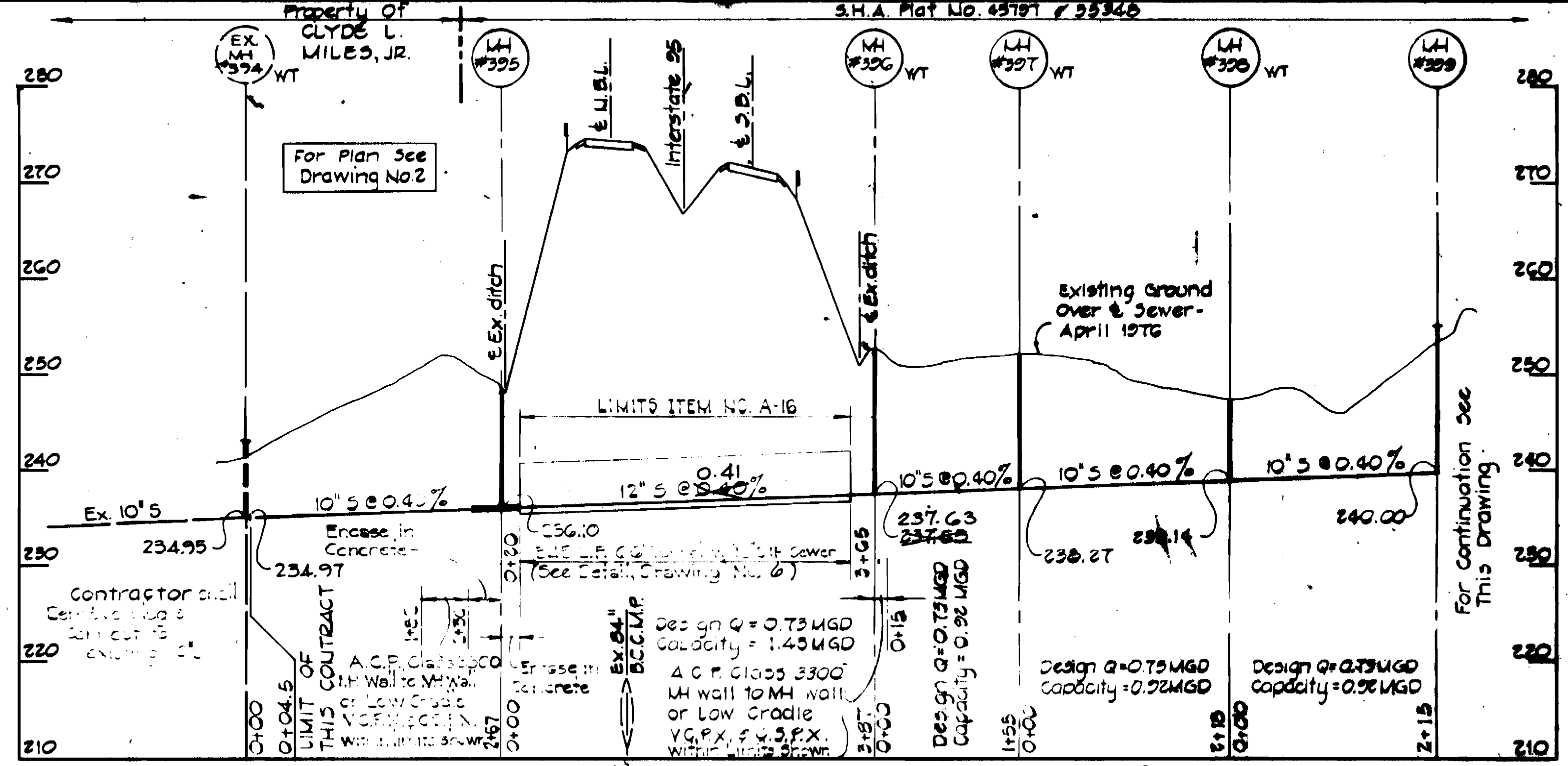
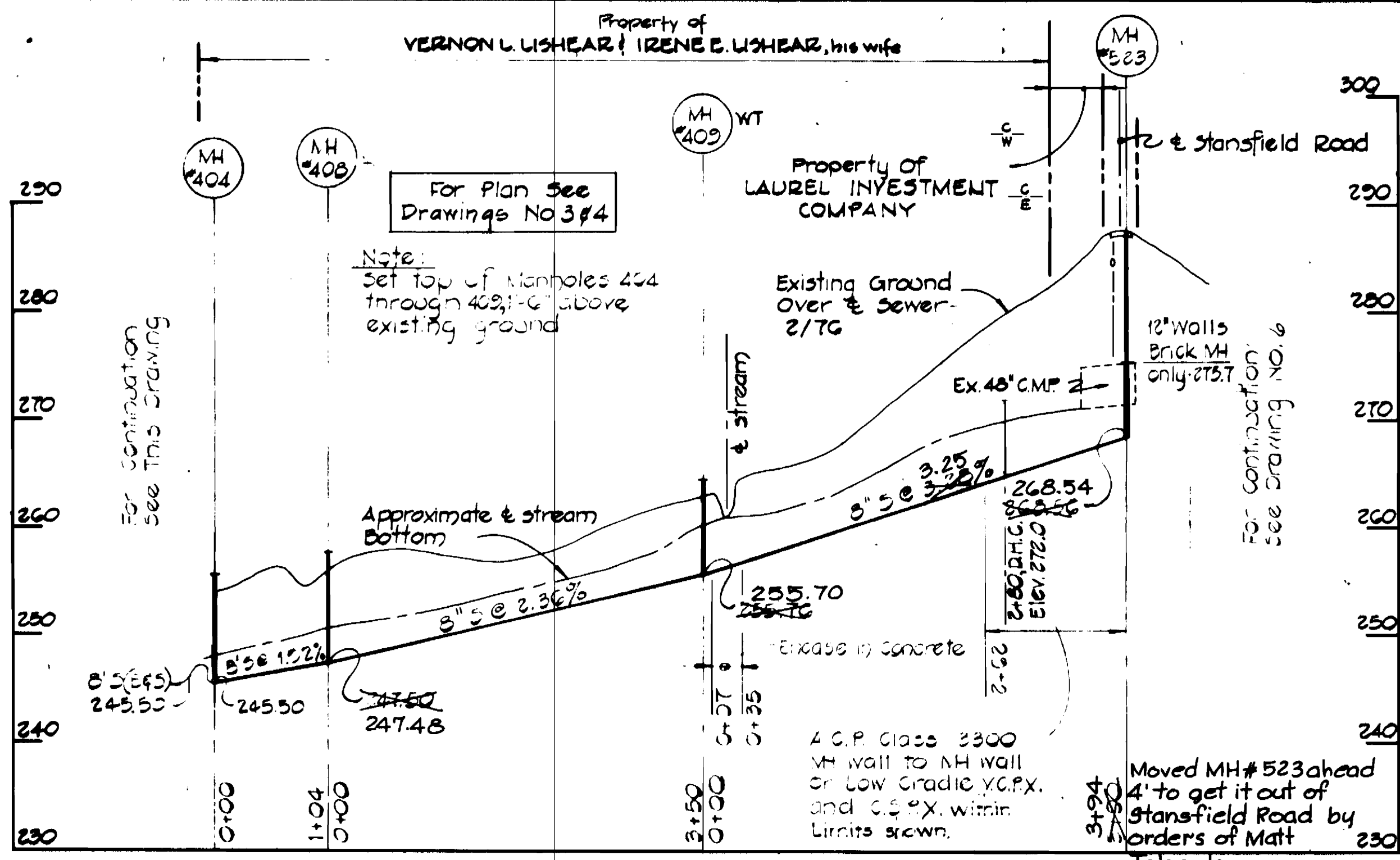
HIGH RIDGE SANITARY SEWERS  
SECTION DISTRICT NO. 8  
HOWARD COUNTY, MARYLAND

**DRAWING SCALE**  
NO. 3  
OF 6  
AS BUILT FEB. 3, 1932









W.S.S.C. NO. 80 SO 4688 A  
**WASHINGTON SUBURBAN SANITARY COMMISSION**  
 FOR SANITARY SEWERS LOCATED ON W.S.S.C. PROPERTY.  
 W. A. R. [Signature] 12/10/77  
 PROJECT DEVELOPMENT DIV. HEAD DATE



CONTRACT NO. 20-1017  
 HIGH RIDGE SANITARY SEWER  
 DUMMERY ROAD, DISTRICT OF  
 HOWARD COUNTY, MARYLAND  
 CIVIL ENGINEER



