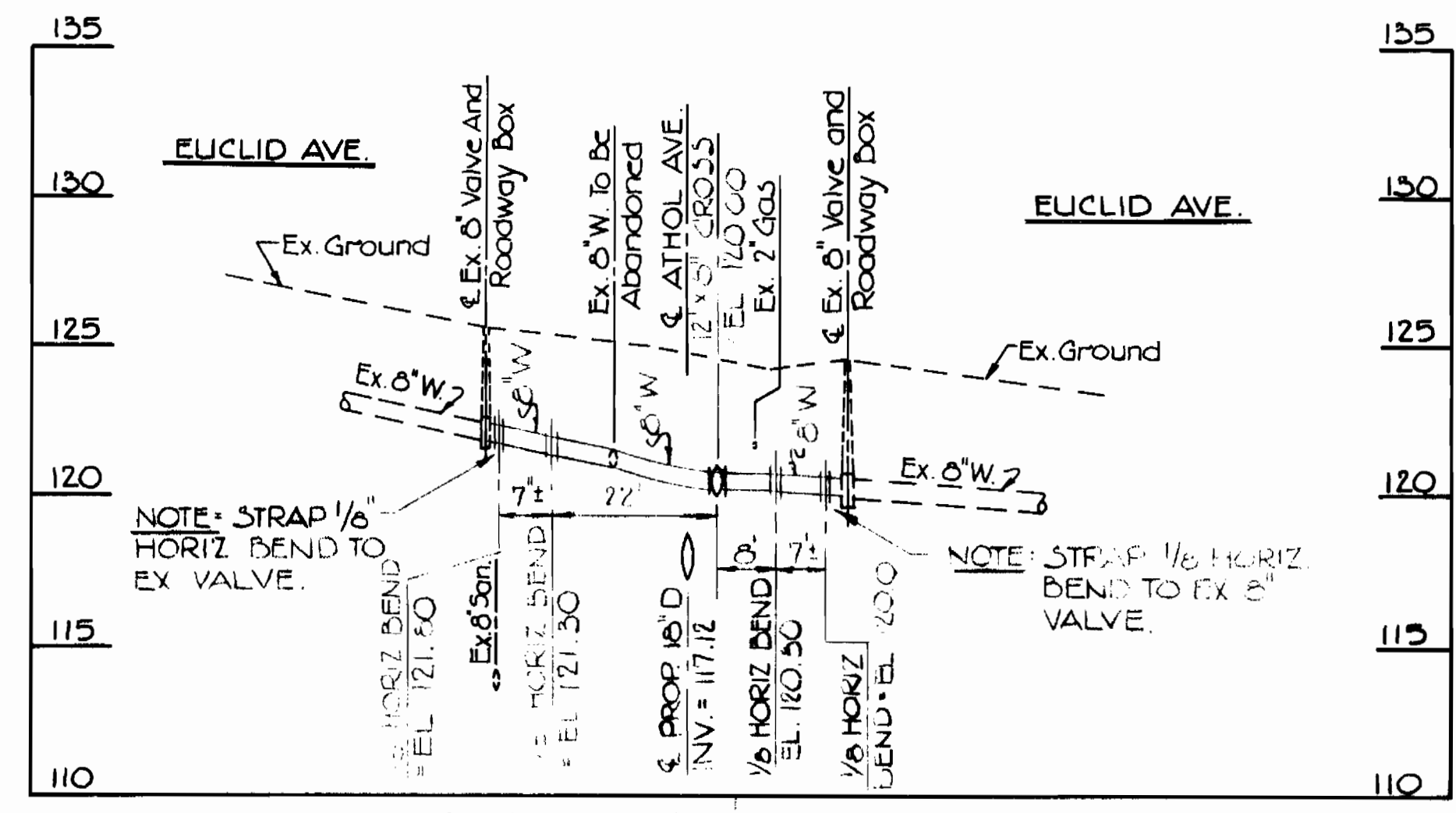


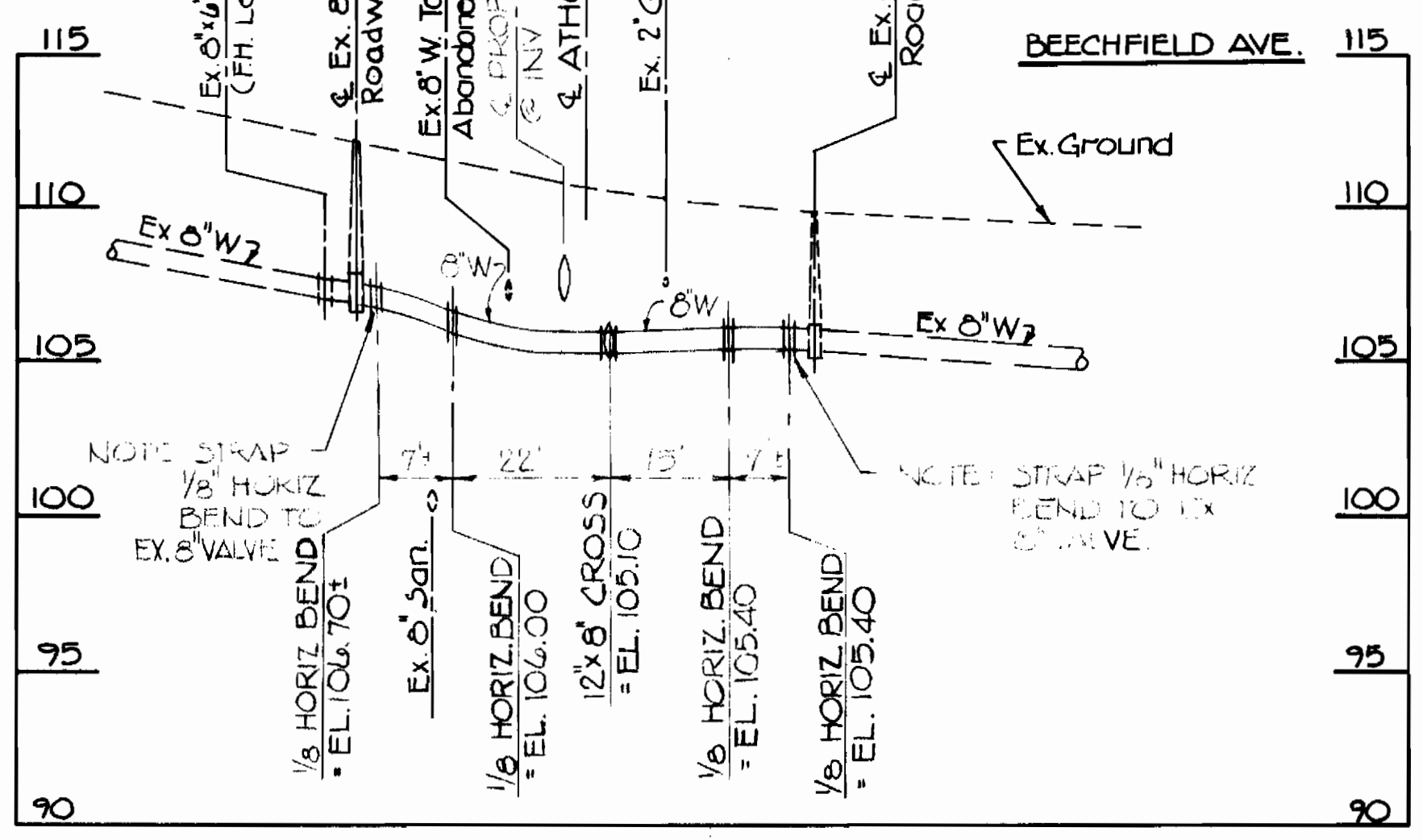
LOCATION MAP
SCALE: 1" = 600'

QUANTITIES			
ITEM	BID	AS BUILT	MATERIAL / SUPPLIER
3" WATER	13 L.F.		
6" WATER	30 L.F.		
12" WATER	2784 L.F.		
3" VALVE	1 Ea.		
6" VALVE	2 Ea.		
12" VALVE	1 Ea.		
12" VALVE	0 Ea.		
8" WATER	400 L.F.		
FIRE HYD.	2 Ea.		
2" BLOW OFF	1 Ea.		

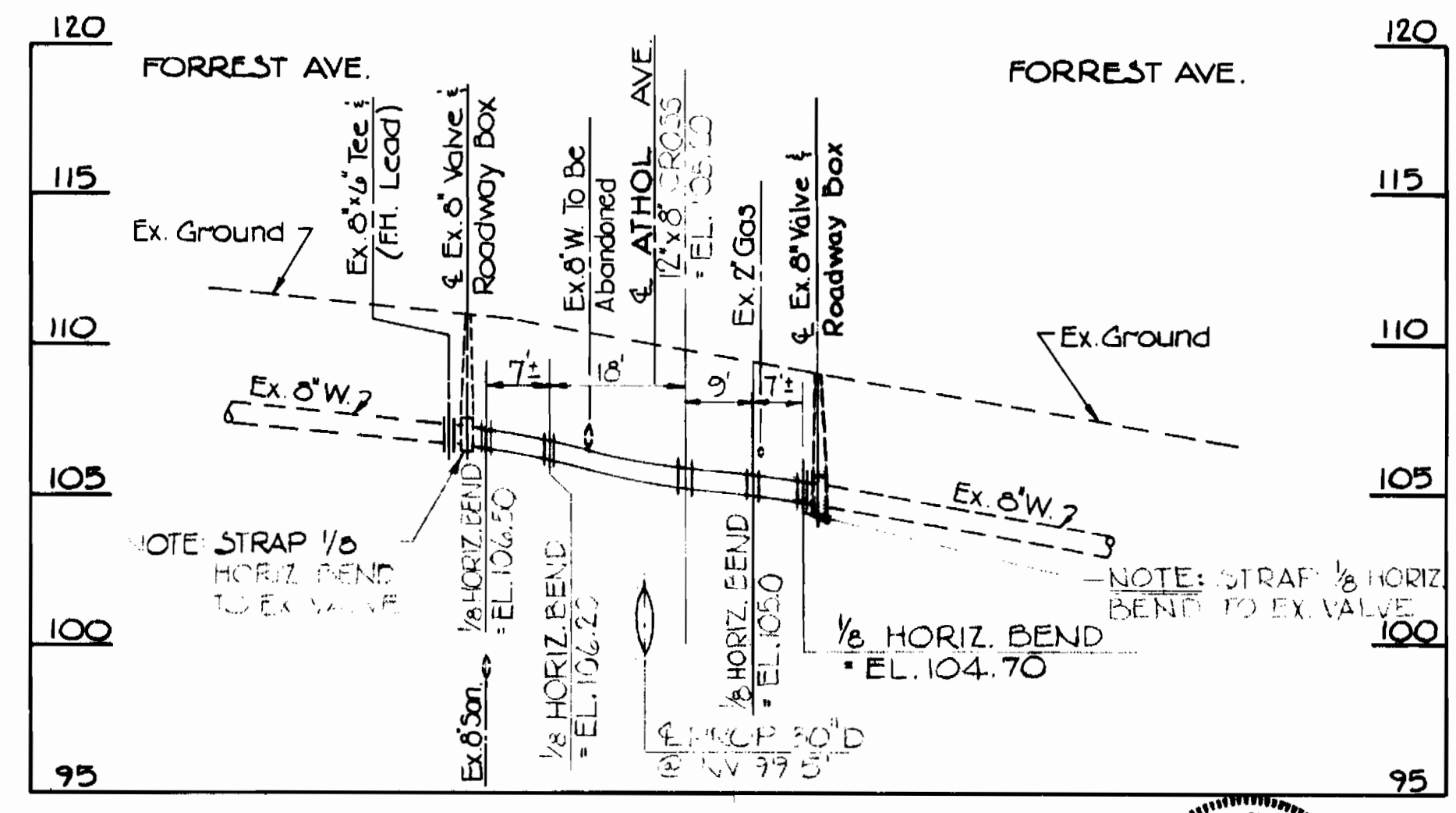
- GENERAL NOTES**
- Approximate Location of Existing Mains are Shown. The Contractor Shall take all Necessary Precautions to Protect Existing Mains and Services and Maintain Uninterrupted Supply. Any Damage Incurred Shall be Repaired Immediately to the Satisfaction of the Engineer, At the Contractor's Expense.
 - All Horizontal Controls are Based on Maryland State Coordinates.
 - All Vertical Controls are Based on U.S.G.S. Datum.
 - All Pipe Elevations Shown are Invert @ Elevations.
 - Clear all Utilities to a Minimum of 6'. Clear all Poles by 2'-0" Minimum or Tunnel as Required. Any Cost Incurred to the Contractor for Tunneling or Bracing of Poles Shall be Included in Unit Prices Bid for Construction of the Main.
 - For Details not Shown on the Drawings Use Howard County Standard Details.
 - For Materials and Construction Methods Use Howard County Standard Specifications.
 - Contractor Shall Locate Existing Utilities a Minimum of two (2) Weeks in Advance of Construction Operations in the Vicinity of Proposed Utilities at his own Expense.
 - Contractor shall Notify the Following Utilities or Agencies at Least five (5) working days before Starting Work Shown on these Plans:
 - State Highway Administration - 551-5555
 - Baltimore Gas & Electric Company - Underground Electric Distribution Customer Service - 685-0123
 - Baltimore Gas & Electric Company - Underground Gas Distribution Customer Service - 685-0125
 - Engineering - "Damage Control" - 234-5621
 - M&D Utility - 1-559-0100
 - Chesapeake & Potomac (C&P) Telephone Company; 725-3333
 - American Telephone and Telegraph Cable Locat on Div. 595-3535
 - Colonial Pipeline Company 761-4641
 - Bureau of Utilities Howard County - 992-2366
 - Trees are to be Protected from Damage to Maximum Extent. Trees Located within the Construction Strip are not to be Removed or Damaged by the Contractor.
 - Contractor Shall Remove Trees, Stumps and Roots along line of Excavation as Directed by the Engineer. Payment for Such Removal Shall be Included in the Unit Price Bid for Construction of the Main.
 - Place Regulation Men Working and Warning Signs as Required to Comply with Maryland State Highway Administration Manual of Traffic Control for Highway Construction and Maintenance Operations.
 - All Water Mains to be C.I.P. or D.I.P. Unless Otherwise Noted.
 - Top of all Water Mains to have minimum of 3% cover unless otherwise Noted.
 - Valves adjacent to Trees shall be Strapped to Trees.
 - Block all Fittings with Concrete.
 - Bury line Elevations on fire hydrants shall be set to the Elevations shown on the drawings. All fire hydrants shall be strapped and buttressed with concrete in accordance with Standard Details. Soil around fire hydrant to be compacted in accordance with Section 37.01 and 37.05 of the Standard Specifications.
 - All Water house connections shall be for an inside meter setting.
 - The Contractor shall not operate any Water Main Valves on the Existing System.



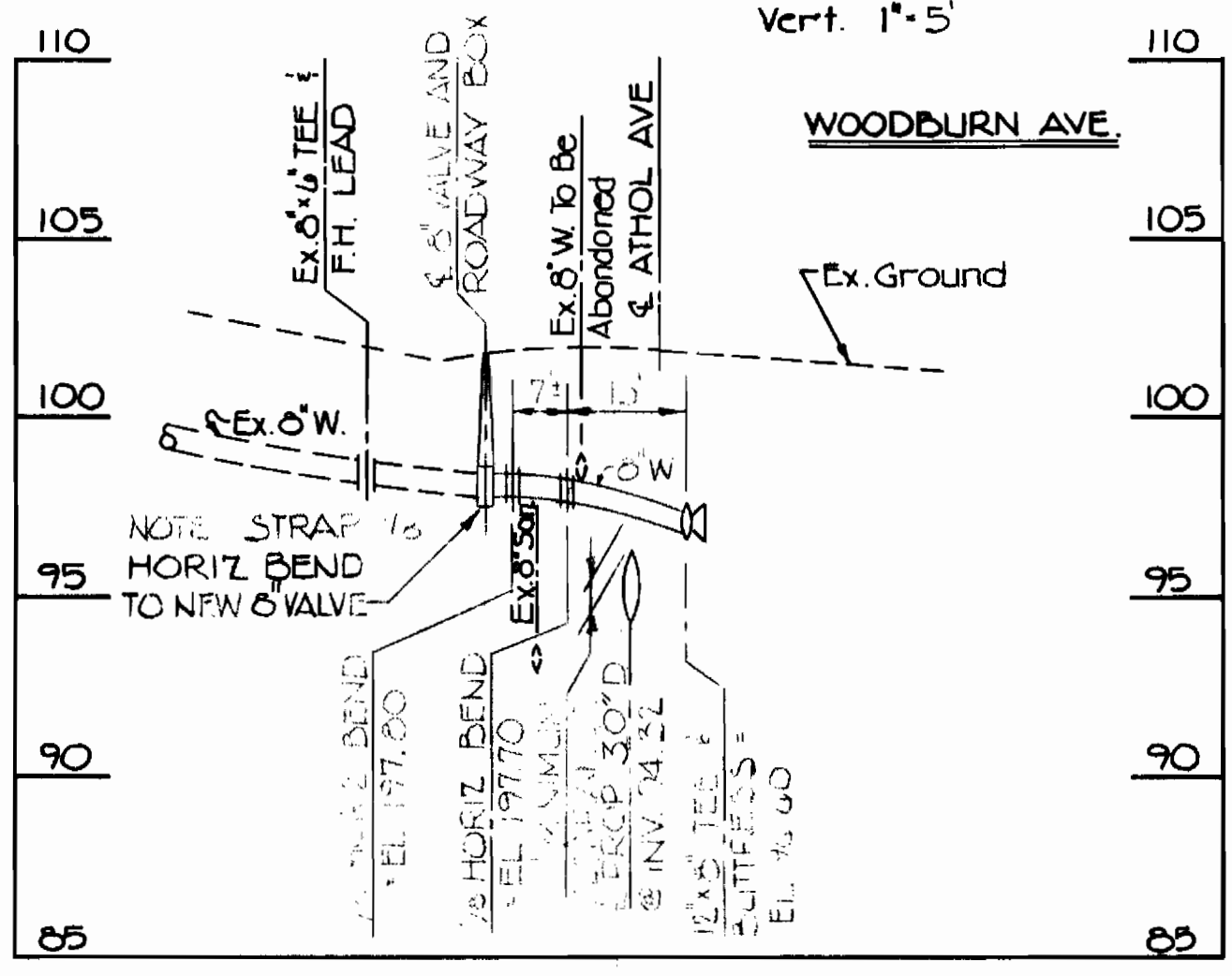
ATHOL AVE. & EUCLID AVE.
Scale: Horiz. 1" = 20'; Vert. 1" = 5'



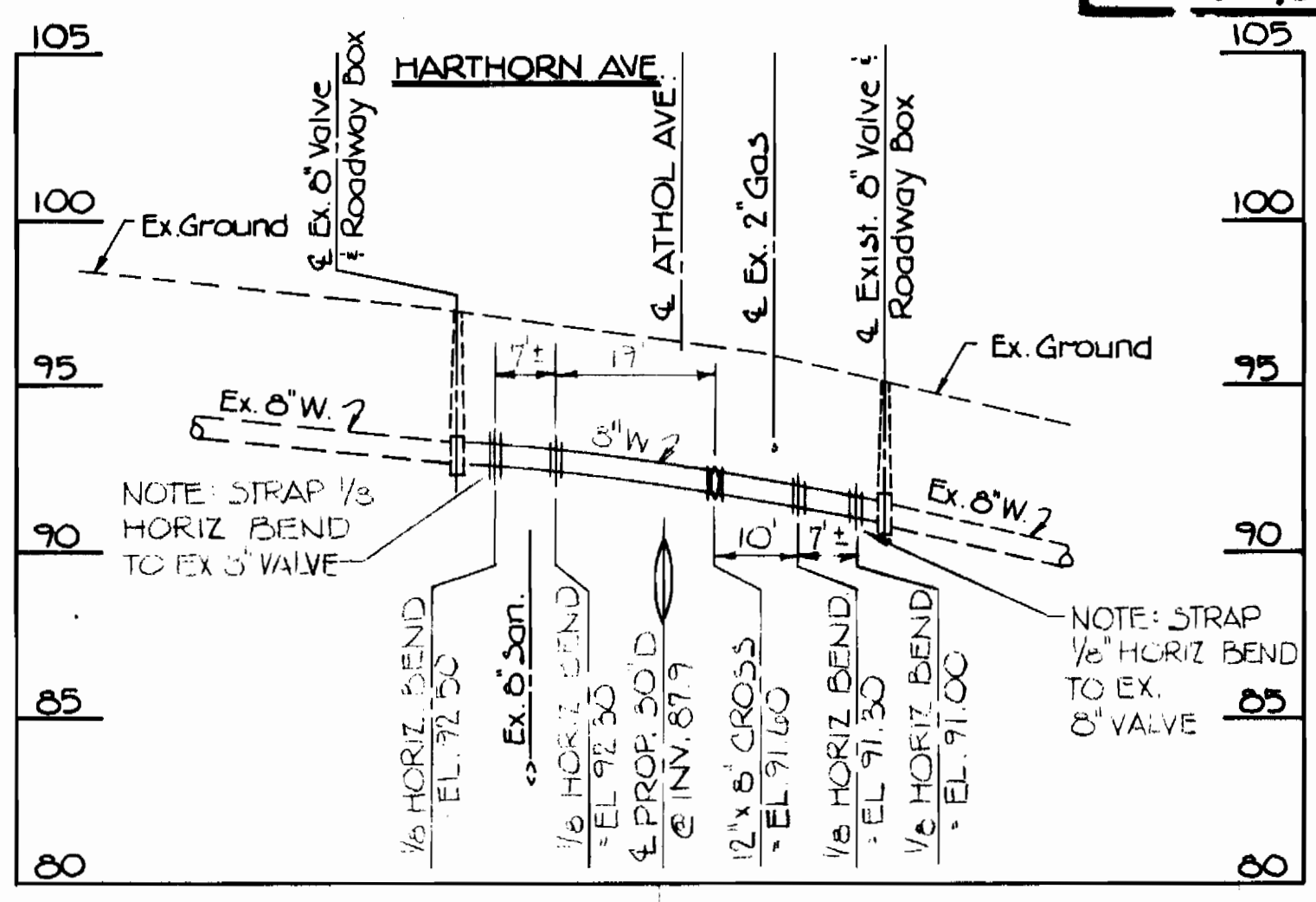
ATHOL AVE. & BEECHFIELD AVE.
Scale: Horiz. 1" = 20'; Vert. 1" = 5'



ATHOL AVE. & FORREST AVE.
Scale: Horiz. 1" = 20'; Vert. 1" = 5'



ATHOL AVE. & WOODBURN AVE.
Scale: Horiz. 1" = 20'; Vert. 1" = 5'



ATHOL AVE. & HARTHORN AVE.
Scale: Horiz. 1" = 20'; Vert. 1" = 5'

DEPARTMENT OF PUBLIC WORKS
HOWARD COUNTY, MARYLAND
Director: *F. N. Nalley* 1-6-82
Chief - Bureau of Utilities: *Richard R. Bruns* 2-18-82

STATE OF MARYLAND
ENGINEER
Professional Engineer
DEPARTMENT OF PUBLIC WORKS
HOWARD COUNTY, MARYLAND
Allan S. Brown 11/5/81
Chief, Utility Division
Richard R. Bruns 1/5/82
Chief, Bureau of Engineering

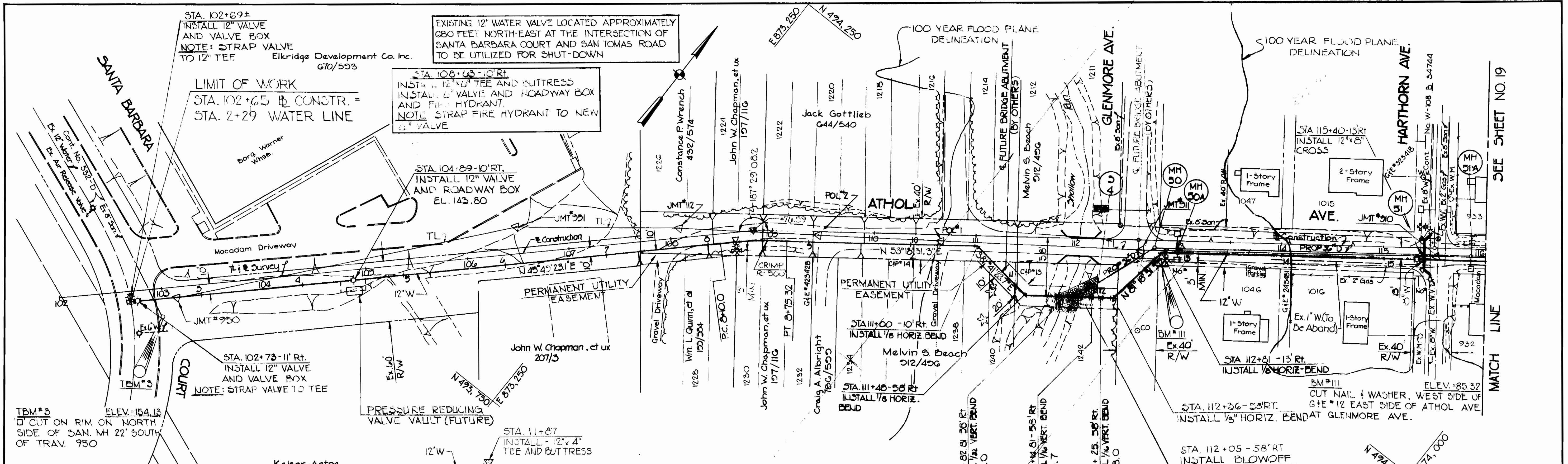
CONTRACT NO. 44-1015

LOCATION MAP AND
GENERAL NOTES

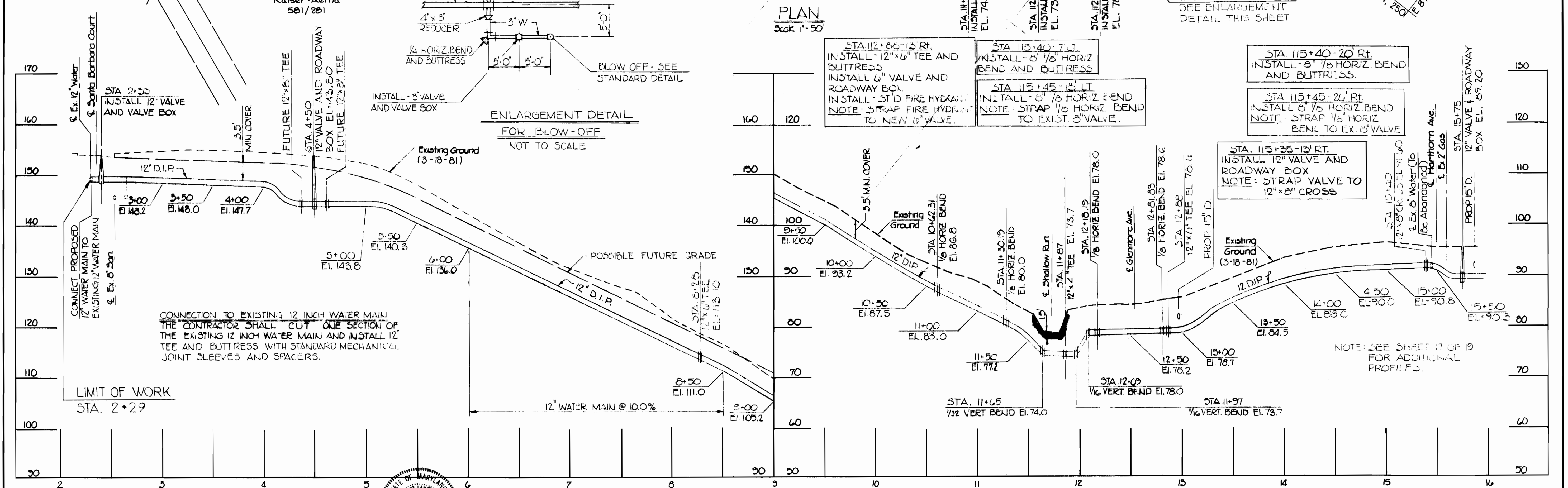
COUNTY LINE WATER MAIN
CAPITAL PROJECT W-6-8050

CAPITAL PROJECT NO. W-8050
CONTRACT NO. 44-1015
DRAWING NO. 17
OF 19
SCALE AS SHOWN

1015/17 W



PLAN
Scale: 1"=50'



PROFILE
Horizontal: 1"=50'
Vertical: 1"=10'

NOTE: SEE SPECIAL PROVISIONS FOR CONNECTING EX. WATER HOUSE CONNECTIONS TO NEW 12" WATER MAIN.

DEPARTMENT OF PUBLIC WORKS
HOWARD COUNTY, MARYLAND

John F. Nunn 1-6-82
DIRECTOR OF PUBLIC WORKS DATE

Robert M. Beninger 2-11-82
CHIEF - BUREAU OF UTILITIES DATE

JOHNSON, MIRMIRAN & THOMPSON P.A.
ENGINEERS - PLANNERS - SURVEYORS - LANDSCAPE ARCHITECTS
1526 YORK ROAD - BALTIMORE, MARYLAND 21093

STATE OF MARYLAND
PROFESSIONAL ENGINEER

DEPARTMENT OF PUBLIC WORKS
HOWARD COUNTY, MARYLAND

Allen S. Brown 11/5/81
CHIEF, UTILITY DIVISION DATE

Robert M. Beninger 2/11/82
CHIEF, BUREAU OF ENGINEERING DATE

CONTRACT NO. 44-1015

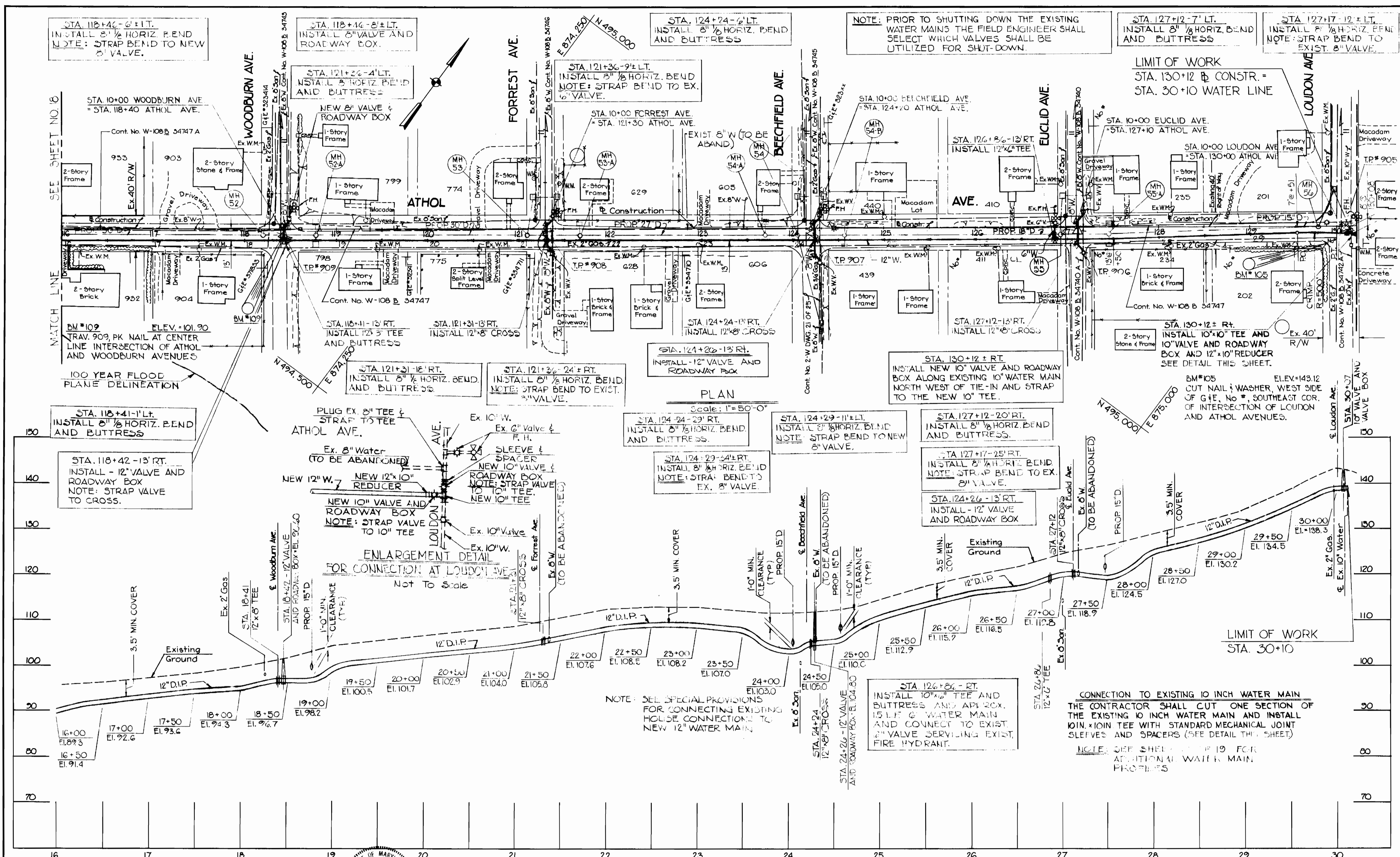
PLAN AND PROFILE
STA. 2+00 TO STA. 16+00

COUNTY LINE WATER MAIN
CAPITAL PROJECT W-6-8050

CAPITAL PROJECT NO. W-6-8050
CONTRACT NO. 44-1015

DRAWING NO. OF	SCALE
18 OF 19	AS SHOWN

MATCH LINE SEE SHEET NO. 19



DEPARTMENT OF PUBLIC WORKS
HOWARD COUNTY, MARYLAND

John F. Nemy 1-6-82
DIRECTOR OF PUBLIC WORKS DATE

Robert M. Bruns 2-18-82
CHIEF - BUREAU OF UTILITIES DATE

JOHNSON, MIRMIRAN & THOMPSON P.A.
ENGINEERS - PLANNERS - SURVEYORS - LANDSCAPE ARCHITECTS
1526 YORK ROAD - BALTIMORE, MARYLAND - 21093

STATE OF MARYLAND
PROFESSIONAL ENGINEER

DEPARTMENT OF PUBLIC WORKS
HOWARD COUNTY, MARYLAND

Allen J. Brown 1/5/82
CHIEF, UTILITY DIVISION DATE

Robert M. Bruns 1/5/82
CHIEF, BUREAU OF ENGINEERING DATE

CONTRACT NO. 44-1015

PLAN AND PROFILE
STA. 16+00 TO STA. 30+00

COUNTY LINE WATER MAIN
CAPITAL PROJECT W-6-8050

CAPITAL PROJECT NO. W-6-8050
CONTRACT NO. 44-1015

DRAWING NO. OF	SCALE
19 OF 19	AS SHOWN