

- GENERAL NOTES**
- Approximate location of existing mains are shown. The Contractor shall take all necessary precautions to protect existing mains and services and maintain them throughout the project. Damage incurred shall be repaired immediately to the satisfaction of the Engineer at the contractor's expense.
  - All horizontal controls are based on Maryland State Coordinates.
  - All vertical controls are based on U.S.G.S. Datum.
  - All manhole inverts shown are invert elevations.
  - Manholes shall be set by a minimum of 3". Clear all poles by 2" minimum or tunnel as required. Any cost incurred to the contractor for tunneling or bracing of poles shall be included in the unit price bid for construction of the main.
  - Materials and construction methods shall be as shown in the drawings use Howard County Std. Details.
  - Materials and construction methods shall be as shown in the drawings use Howard County Std. Details.
  - Construction operations in the vicinity of proposed utilities shall be in advance of the construction of the utility.
  - Utilities to be protected shall include the following: Utilities of agencies at least five (5) working days in advance of the start of work on these plans:  
 - State Highway Administration - 531-5523  
 - Baltimore Gas & Electric Company - Underground Electric Distribution Customer Service - Engineering - "Damage Control" 234-9621  
 - Chesapeake & Potomac Telephone Company - 725-2976  
 - American Telephone & Telegraph Company - Cable Location Division - 393-3955  
 - Bureau of Utilities - Howard County - 992-3922
  - Trees are to be protected from damage to maximum extent. Trees located within the construction limits are not to be removed or damaged by the contractor.
  - Excavation shall remove trees, stumps and roots along line of excavation as indicated on the drawings. Equipment for such removal shall be included in the unit price bid for construction of the main.
  - Precaution Men Working and warning signs are required to comply with the State Highway Administration Manual - Traffic Control for Highway Construction - 1976 Edition.
  - Excavations shall be 6" x 6" or 8" x 8" unless otherwise noted.
  - All water mains to have a minimum of 3'-2" cover unless otherwise noted.
  - Valves adjacent to trees shall be strapped to trees.
  - Block all fittings with concrete.
  - Burn line elevations on fire hydrants shall be set to the elevations shown on the drawings. Details. Soil around the fire hydrant to be compacted in accordance with Section 802.01 of the Standard Specifications.
  - All water house connections shall be for an inside meter setting.
  - The contractor shall not operate any water main valves on the existing system.
  - All sewer mains shall be C.S.P., R.C.P., V.C.P., A.C.P. Class 2400 or PV2 unless otherwise noted.
  - The contractor shall provide a joint in all sewer mains within 2'-0" of factory manhole.
  - All manholes shall be 4'-0" inside diameter, unless otherwise noted.
  - Force mains shall be D.I.P. only.
  - Manholes shown with 12" and 18" walls are brick manholes only.
  - Manholes designated W.T. in plan & profile shall have watertight frame and cover. Std. Detail 604.
  - Where watertight manhole frame and cover is used, set top of frame 1'-0" above finished grade.
  - House(s) with the symbol "G.N.S." indicates that cellar can not be served.

APPROVED: FOR PUBLIC WATER AND PUBLIC SEWERAGE AND STORM DRAINAGE & ROADS  
HOWARD COUNTY DEPT. OF PUBLIC WORKS

DIRECTOR DATE CHIEF, BUREAU OF ENGINEERING DATE

APPROVED: FOR PUBLIC WATER & PUBLIC SEWERAGE SYSTEMS  
HOWARD COUNTY HEALTH DEPT.

COUNTY HEALTH OFFICER DATE

APPROVED: HOWARD COUNTY OFFICE OF PLANNING & ZONING

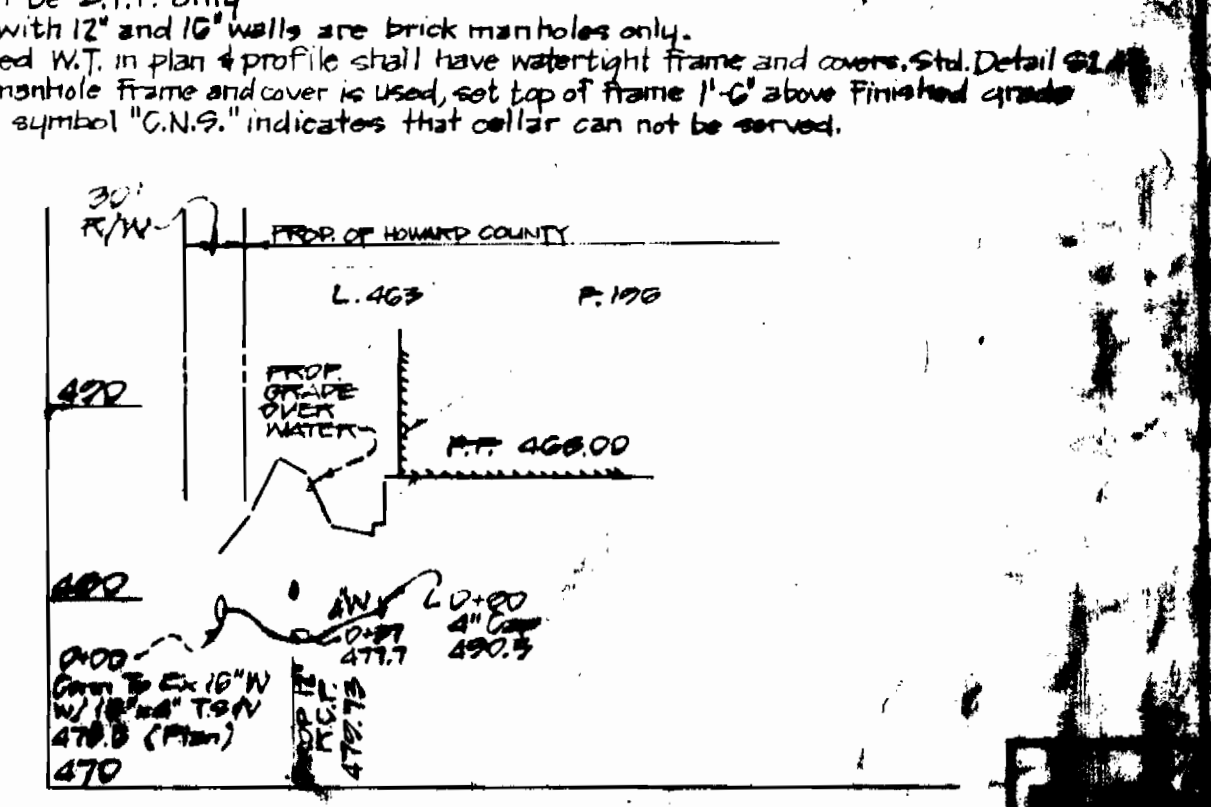
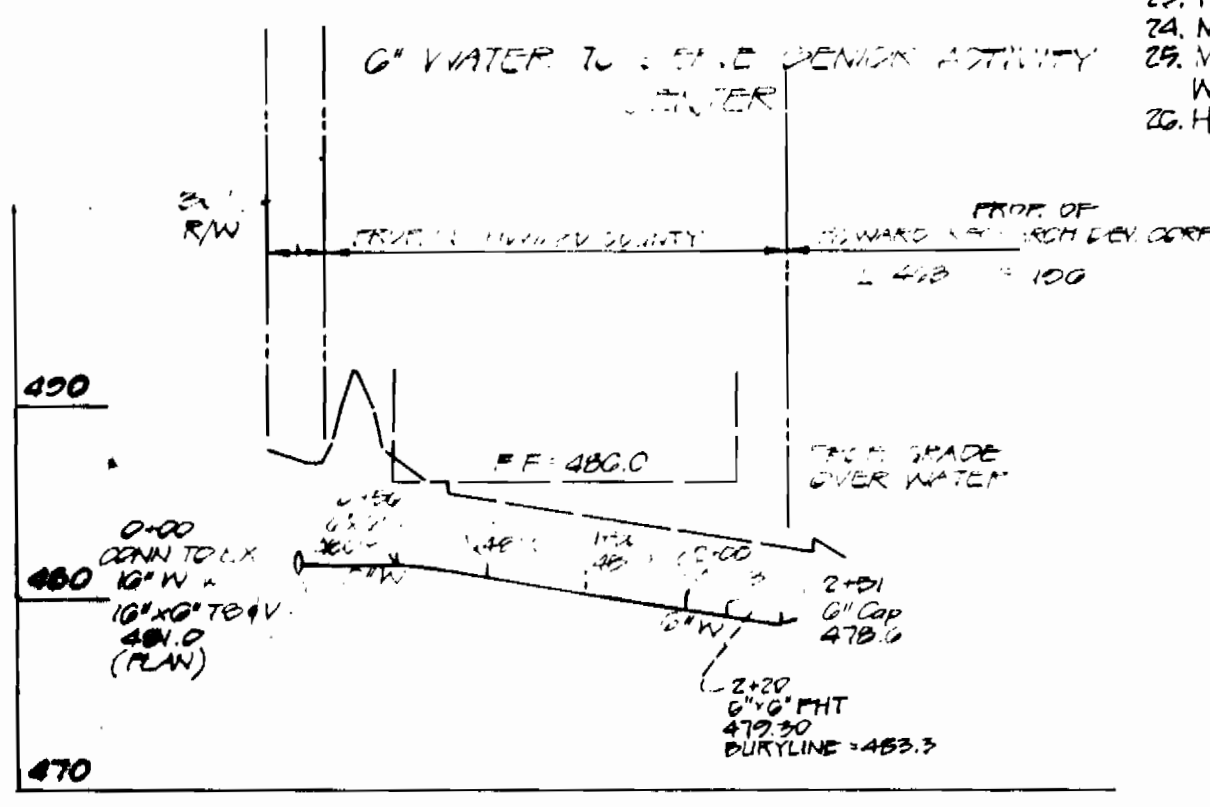
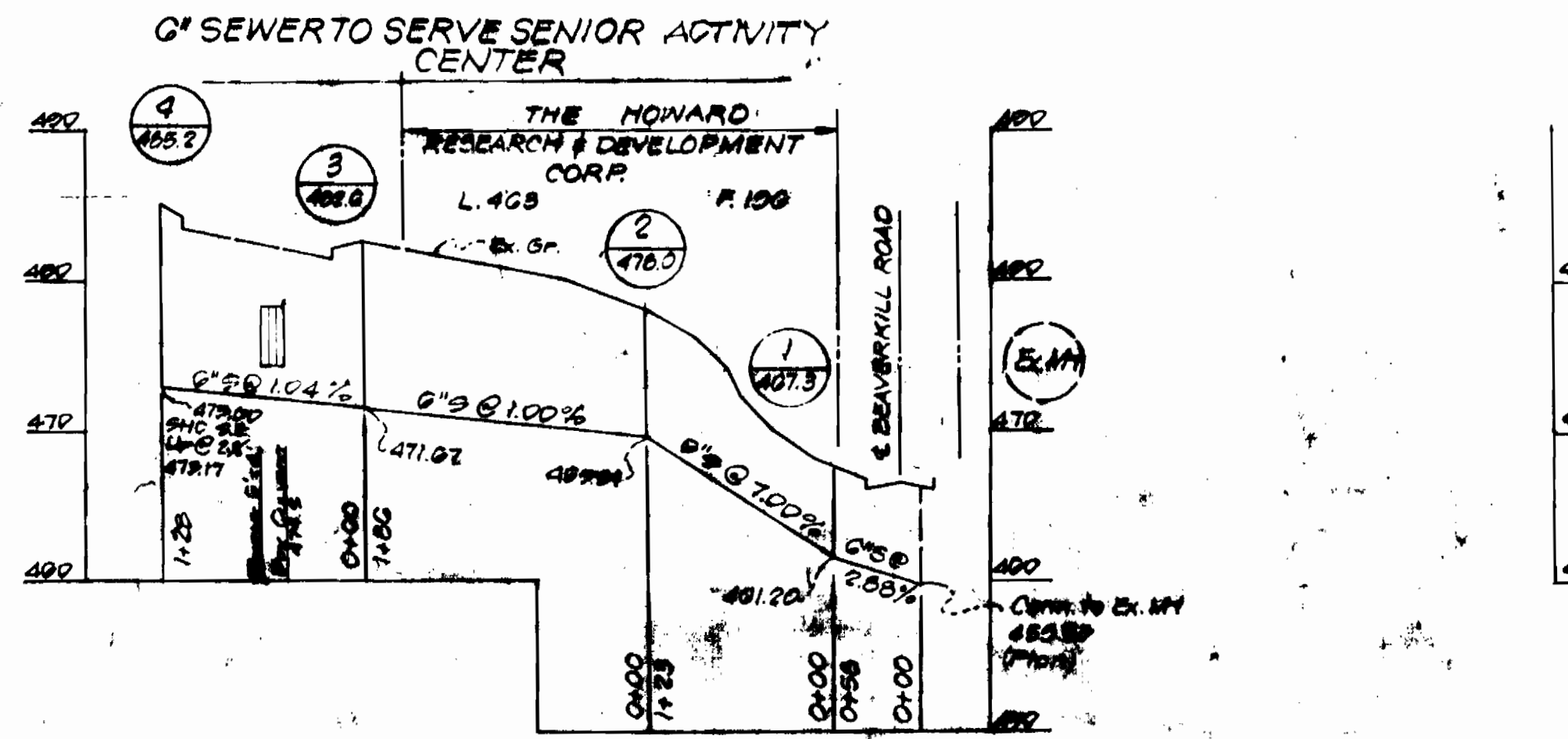
PLANNING DIRECTOR DATE DATE CHIEF, DIVISION OF LAND DEVELOPMENT AND ZONING ADMINISTRATION

PLAN SCALE: 1" = 50'

QUANTITIES			
ITEM	QTY	AS BUILT	MATERIAL SUPPLIER
6" SEWER MANHOLES	4		
6" WATER	251		
4" WATER	80		
FIRE HYDRANTS	1		
16" x 10" V. C.S.P.	1		
6" x 6" T.S. 4" V.	1		

**BENCH MARK INFORMATION**

- N. SIDE BEAVERKILL RD TOP OF STORM DRAIN STRUCTURE BM. CL. = 476.27
- E. SIDE BEAVERKILL RD TOP OF STORM DRAIN STRUCTURE BM. EL. = 476.00
- N. SIDE HARPERS PARK RD X CUT ON CONCRETE CURB BM. EL. = 476.00



PROFILE SCALE: HORIZONTAL: 1" = 100' VERTICAL: 1" = 10'

Contract No. C-0-016 SENIOR ACTIVITY CENTER VILLAGE OF HARPERS CHOICE

**WARRING ASSOCIATES**  
ENGINEERS - PLANNERS - SURVEYORS  
4920 Niagara Road  
College Park, Maryland 20740

DEPARTMENT OF PUBLIC WORKS  
HOWARD COUNTY, MARYLAND

DATE: DIRECTOR OF PUBLIC WORKS DATE: CHIEF, BUREAU OF ENGINEERING  
DATE: CHIEF, UTILITY DIVISION

CONTRACT NO. 24-1016 C-0-016

PLAN AND PROFILES OF WATER & SEWER MAINS

SENIOR ACTIVITY CENTER  
VILLAGE OF HARPERS CHOICE  
ELECTION DISTRICT - CLARKSVILLE No. 5

DRAWING NO. 7 OF 7 SCALE AS SHOWN