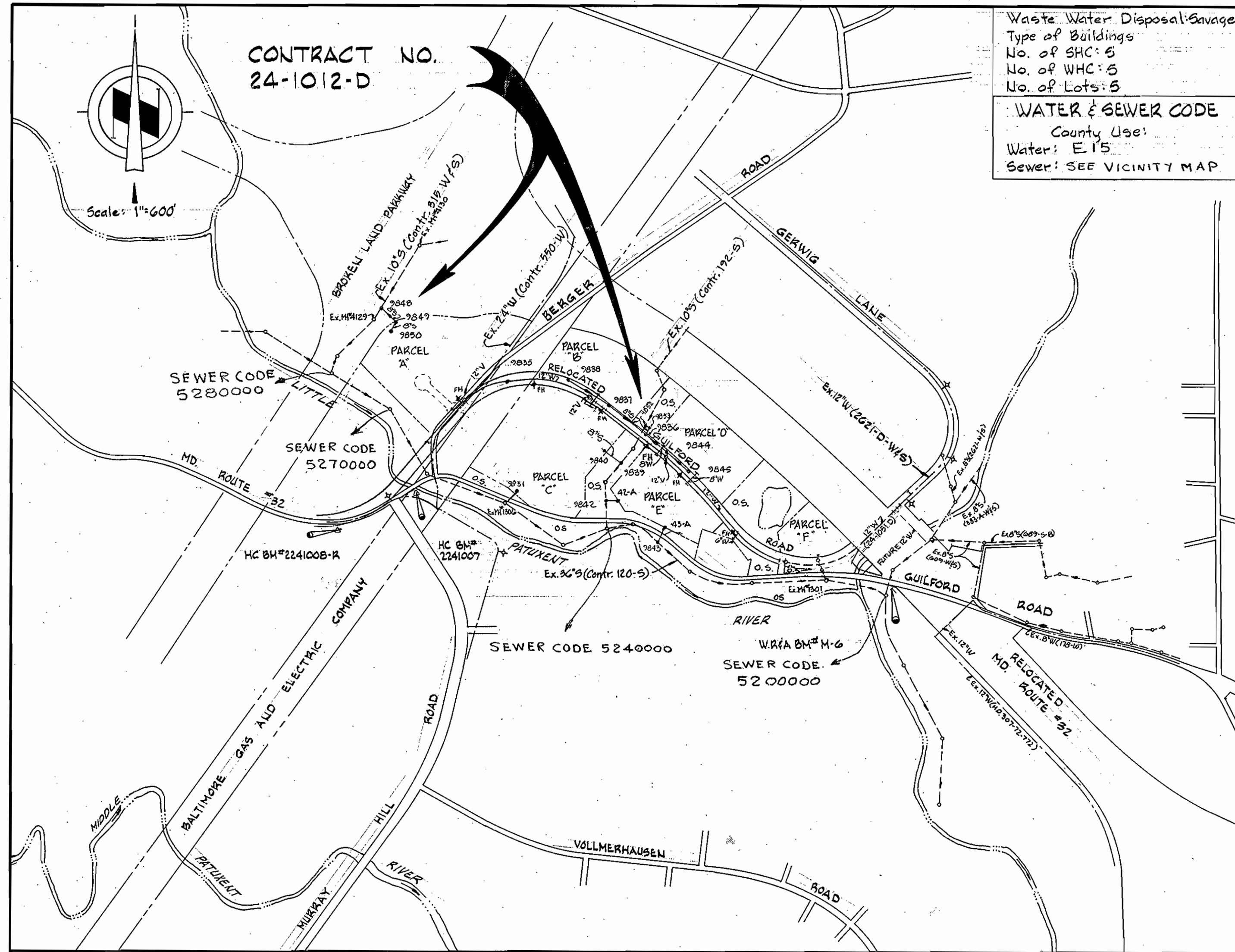


GENERAL NOTES

1. APPROXIMATE LOCATION OF EXISTING MAINS ARE SHOWN. THE CONTRACTOR SHALL TAKE ALL NECESSARY PRECAUTIONS TO PROTECT EXISTING MAINS AND SERVICES AND MAINTAIN UNINTERRUPTED SUPPLY. ANY DAMAGE INCURRED SHALL BE REPAIRED IMMEDIATELY TO THE SATISFACTION OF THE ENGINEER, AT THE CONTRACTOR'S EXPENSE.
2. ALL PIPE ELEVATIONS SHOWN ARE INVERT \bigcirc ELEVATIONS.
3. CONTRACTOR SHALL LOCATE EXISTING UTILITIES A MINIMUM OF TWO WEEKS IN ADVANCE OF CONSTRUCTION OPERATIONS IN THE VICINITY OF UTILITIES AT HIS EXPENSE.
4. FOR DETAILS NOT SHOWN ON THE DRAWINGS, USE HOWARD COUNTY STANDARD DETAILS.
5. FOR MATERIALS AND CONSTRUCTION REQUIREMENTS, USE HOWARD COUNTY STANDARD SPECIFICATIONS.
6. ALL HORIZONTAL CONTROLS ARE BASED ON MARYLAND STATE COORDINATES.
7. ALL VERTICAL CONTROLS ARE BASED ON USGS DATUM.
8. CLEAR ALL UTILITIES BY A MINIMUM OF 6". CLEAR ALL POLES BY 2'-0" MINIMUM OR TUNNEL AS REQUIRED. THE COST FOR TUNNELING OR BRACING POLES SHALL BE INCLUDED IN APPROPRIATE UNIT PRICES BID.
9. CONTRACTOR SHALL NOTIFY THE FOLLOWING UTILITIES OR AGENCIES AT LEAST FIVE (5) WORKING DAYS BEFORE STARTING WORK SHOWN ON THESE PLANS.
 STATE HIGHWAY ADMINISTRATION - 531-5533
 BALTIMORE GAS AND ELECTRIC COMPANY
 UNDERGROUND ELECTRIC AND GAS DISTRIBUTION-CUSTOMER SERVICE -685-0123
 DAMAGE CONTROL - 234-5621
 "MISS UTILITY" - 1 - 559-0100
 CHESAPEAKE AND POTOMAC TELEPHONE COMPANY - 725-9976
 AMERICAN TELEPHONE AND TELEGRAPH - CABLE LOCATION DIVISION - 393-3553
 BUREAU OF UTILITIES HOWARD COUNTY - 992-2366
10. TREES ARE TO BE PROTECTED FROM DAMAGE TO MAXIMUM EXTENT. TREES LOCATED WITHIN THE CONSTRUCTION STRIP ARE NOT TO BE REMOVED OR DAMAGED BY THE CONTRACTOR.
11. CONTRACTOR SHALL REMOVE TREES, STUMPS AND ROOTS ALONG LINE OF EXCAVATION AS DIRECTED BY THE ENGINEER. PAYMENT FOR SUCH REMOVAL SHALL BE INCLUDED IN APPROPRIATE UNIT PRICES BID.
12. PLACE REGULATION "MEN WORKING" AND WARNING SIGNS AS REQUIRED TO COMPLY WITH MARYLAND STATE HIGHWAY ADMINISTRATION MANUAL OF TRAFFIC CONTROL FOR HIGHWAY CONSTRUCTION AND MAINTENANCE OPERATIONS.
13. ALL WATER MAINS TO BE C.I.P. OR D.I.P. UNLESS OTHERWISE NOTED.
14. TOP OF ALL WATER MAINS SHALL HAVE A MINIMUM OF 3 1/2 FEET OF COVER UNLESS OTHERWISE NOTED.
15. VALVES SHALL BE STRAPPED WHERE APPLICABLE.
16. BLOCK ALL FITTINGS WITH CONCRETE.
17. BURY LINE ELEVATIONS ON FIRE HYDRANTS SHALL BE SET TO THE ELEVATIONS SHOWN ON THE DRAWINGS. ALL FIRE HYDRANTS SHALL BE STRAPPED AND BUTTRESSED WITH CONCRETE IN ACCORDANCE WITH STANDARD DETAILS. SOIL AROUND THE FIRE HYDRANT TO BE COMPACTED IN ACCORDANCE WITH THE STANDARD SPECIFICATIONS.
18. WATER HOUSE CONNECTIONS SHALL BE FOR AN INSIDE METER SETTING.
19. THE CONTRACTOR SHALL NOT OPERATE ANY WATER MAIN VALVES ON THE EXISTING SYSTEM.
20. ALL SEWER MAINS SHALL BE C.S.P.X., V.C.P.X., A.C.P. OR P.V.C. UNLESS OTHERWISE NOTED.
21. ALL MANHOLES SHALL BE 4'-0" INSIDE DIAMETER, UNLESS OTHERWISE NOTED.
22. THE CONTRACTOR SHALL PROVIDE A JOINT IN ALL SEWER MAINS WITHIN 2'-0" OF EXTERIOR MANHOLE WALLS.
23. MANHOLES SHOWN WITH 12" WALLS ARE FOR BRICK MANHOLES ONLY.
24. MANHOLES DESIGNATED W.T. IN PROFILE SHALL HAVE WATERTIGHT FRAME AND COVER.



Waste Water Disposal: Sewage
 Type of Buildings
 No. of SHC: 5
 No. of WHC: 5
 No. of Lots: 5
WATER & SEWER CODE
 County Use:
 Water: E 15
 Sewer: SEE VICINITY MAP

QUANTITIES			
ITEM	BID	AS-BUILT	MATERIAL/SUPPLIER
8" Sewer - LF	2460		
Manholes - Ea	18		
12" Water - LF	2890		
12" Valves - Ea	2		
8" Water - LF	750		
8" V (Excluding WHCV)	1		
6" Water - LF	170		
6" V (Excluding FHV)	1		
Fire Hydrants	7		
24"x12" F.P. Tap	1		
A.R. Manhole	1		
8" SHC - LF	80		
8" WHC - LF	265		

CONTRACT NO. 24-1012-D
RIVERS CORPORATE PARK
HOWARD COUNTY, MARYLAND
DEPARTMENT OF PUBLIC WORKS

Sediment Control Measures for this Contract will be implemented in accordance with Article 19 of the Standard Specifications F-82-92

REVIEWED FOR HOWARD SOIL CONSERVATION DISTRICT AND MEETS TECHNICAL REQUIREMENT

James W. Helm 5-26-82
 SIGNATURE DATE
 U.S. SOIL CONSERVATION SERVICE

This Development Plan is approved for Soil Erosion and Sediment Control by the Howard County Conservation District.

APPROVED: *William T. Rame* 5-25-82
 HOWARD C.O. DATE

DEPARTMENT OF PUBLIC WORKS
 HOWARD COUNTY, MARYLAND

John F. Nemm 5-28-82
 DIRECTOR OF PUBLIC WORKS - DATE
Richard M. Reutter 5-27-82
 CHIEF - BUREAU OF UTILITIES - DATE
William J. Kelly 5-28-82
 CHIEF - BUREAU OF ENGINEERING - DATE
William J. Kelly 5-28-82
 CHIEF - LAND DEVELOPMENT DIVISION - DATE

WHITMAN, REQUARDT AND ASSOCIATES
 ENGINEERS
 2315 ST. PAUL ST.
 BALTIMORE, MARYLAND

CONTRACT NO. 24-1012-D

LOCATION MAP OF
 WATER & SEWER MAINS

COLUMBIA
 RIVERS CORPORATE PARK
 ELECTION DISTRICT GUILFORD NO. 6

DRAWING
 NO. 1
 OF 6
 SCALE
 AS
 SHOWN

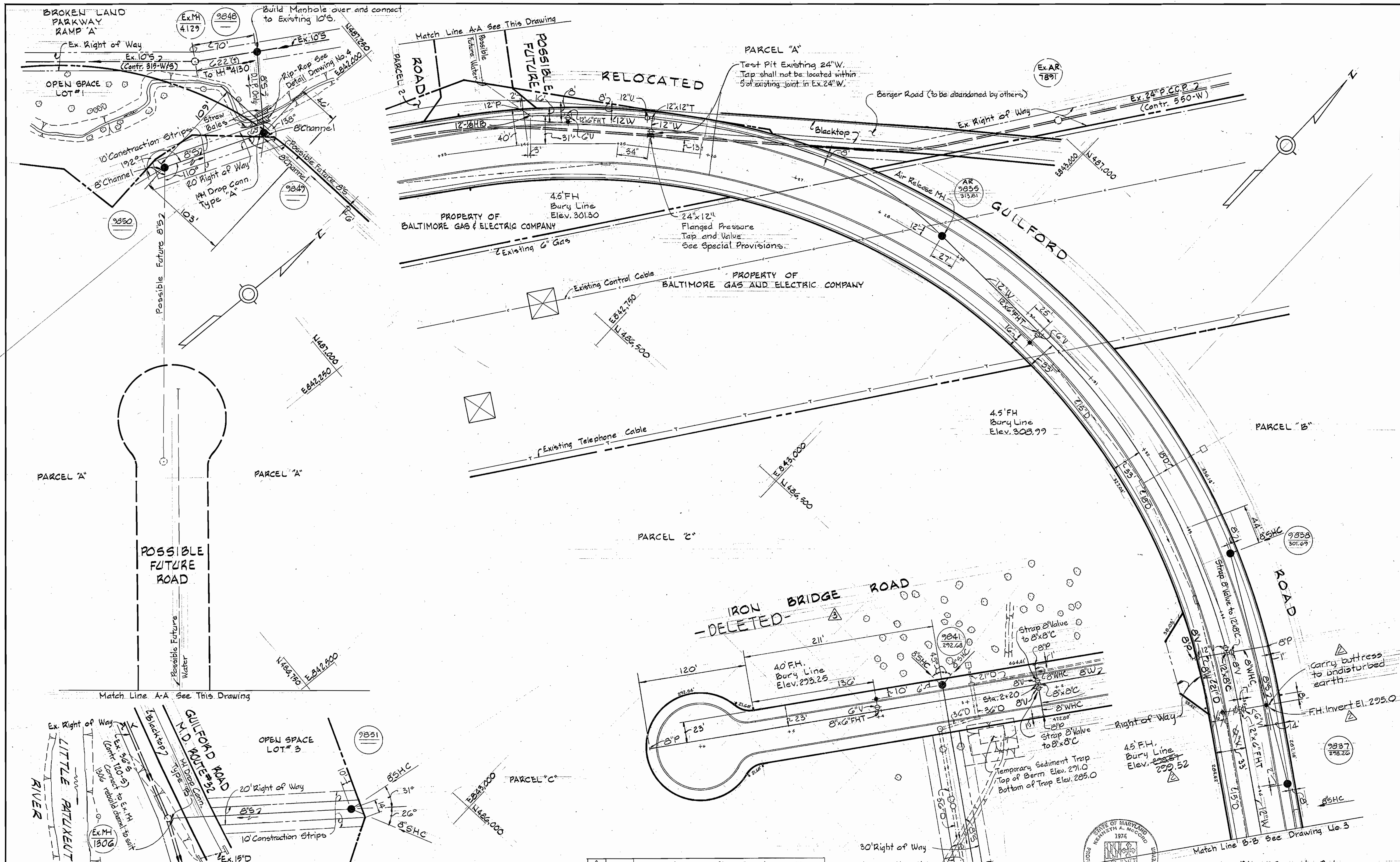
0/24/82	See Sheet No. 2, 3, & 6
3/24/82	See Sheet No. 2 & 4
7/14/82	See Sheet No. 5 & 6
No. Date	Revision

Formerly
 Village of Kings Contrivance
 Section 3 Area 3

Herbert A. Melrod
 Rivers Corporate Park
 Section 2, Area 1
 Contract No. 24-1012-D

MAY 21, 1982

1012/1 WS



SM 2/101

DEPARTMENT OF PUBLIC WORKS
 HOWARD COUNTY, MARYLAND
 Director of Public Works - DATE
 Chief - Bureau of Engineering - DATE
 Chief - Bureau of Utilities - DATE
 Chief - Land Development Division - DATE

WHITMAN, REQUARDT AND ASSOCIATES
 ENGINEERS
 2315 ST. PAUL ST.
 BALTIMORE, MARYLAND

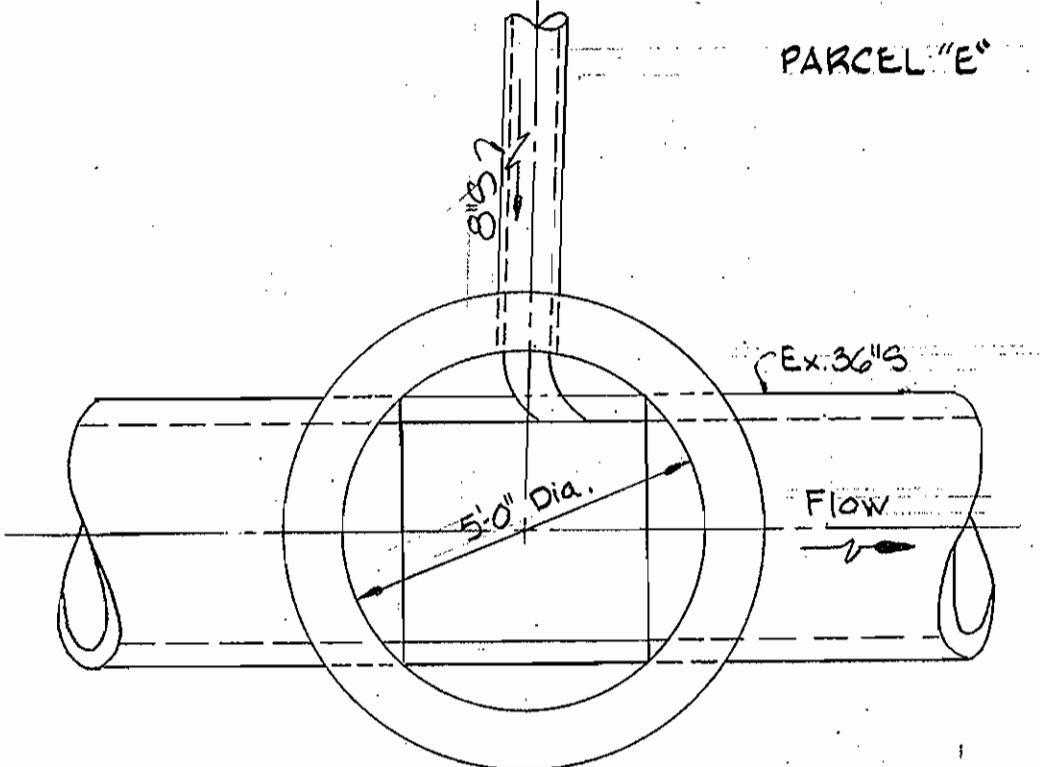
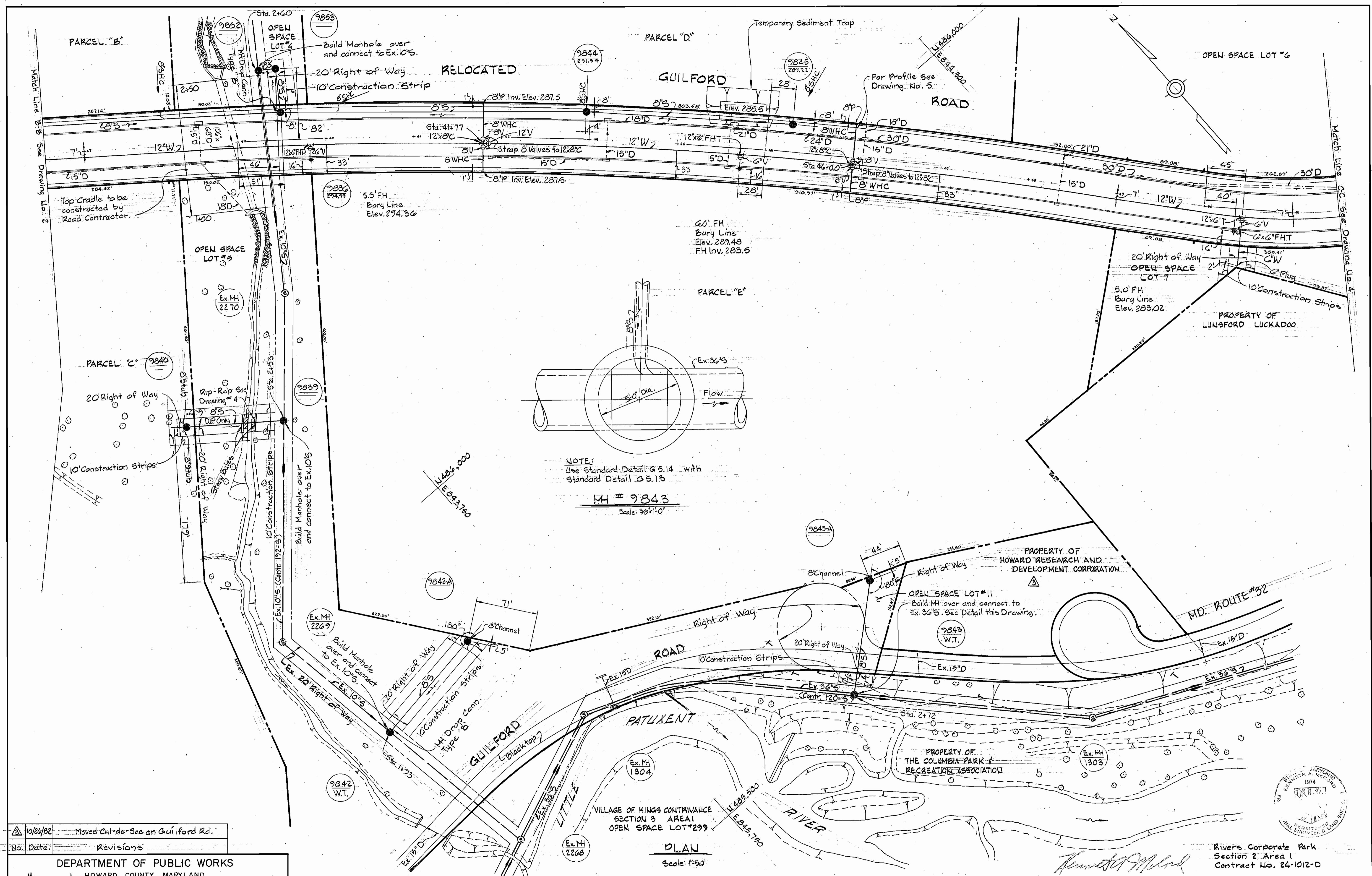
10-26-82	Deleted Iron Bridge Road
3-24-82	Switched F.H. to N. side Guilford Rd, Sta. 35+10
No. Date	Revision

CONTRACT NO. 24-1012-D

PLAN OF WATER & SEWER MAINS

COLUMBIA RIVERS CORPORATE PARK
 ELECTION DISTRICT GUILFORD NO. 6

DRAWING NO. 2 OF 6
 SCALE 1"=50'



NOTE:
Use Standard Detail G 5.14 with
Standard Detail G 5.13

MH # 9843
Scale: 3/8"=1'-0"

10/24/82	Moved Cal-de-Sac on Guilford Rd.
No.	Date
	Revisions

DEPARTMENT OF PUBLIC WORKS
HOWARD COUNTY, MARYLAND

F. N... 5-28-82
DIRECTOR OF PUBLIC WORKS - DATE

R... 5-27-82
CHIEF, BUREAU OF UTILITIES - DATE

K... 5/28/82
CHIEF - BUREAU OF ENGINEERS - DATE

W...
CHIEF - LAND DEVELOPMENT DIVISION - DATE

WHITMAN, REQUARDT AND ASSOCIATES
ENGINEERS
2315 ST. PAUL ST.
BALTIMORE, MARYLAND

CONTRACT NO. 24-1012-D

PLAN OF
WATER & SEWER MAINS

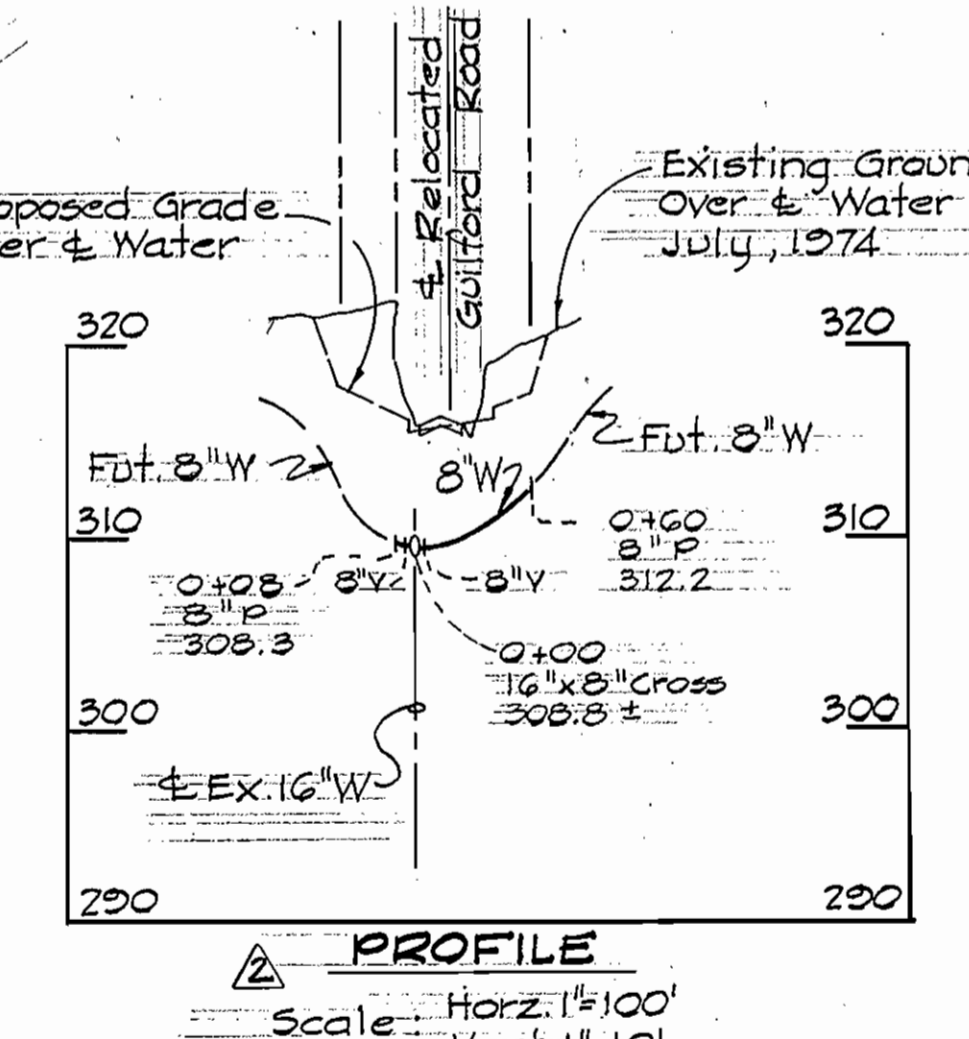
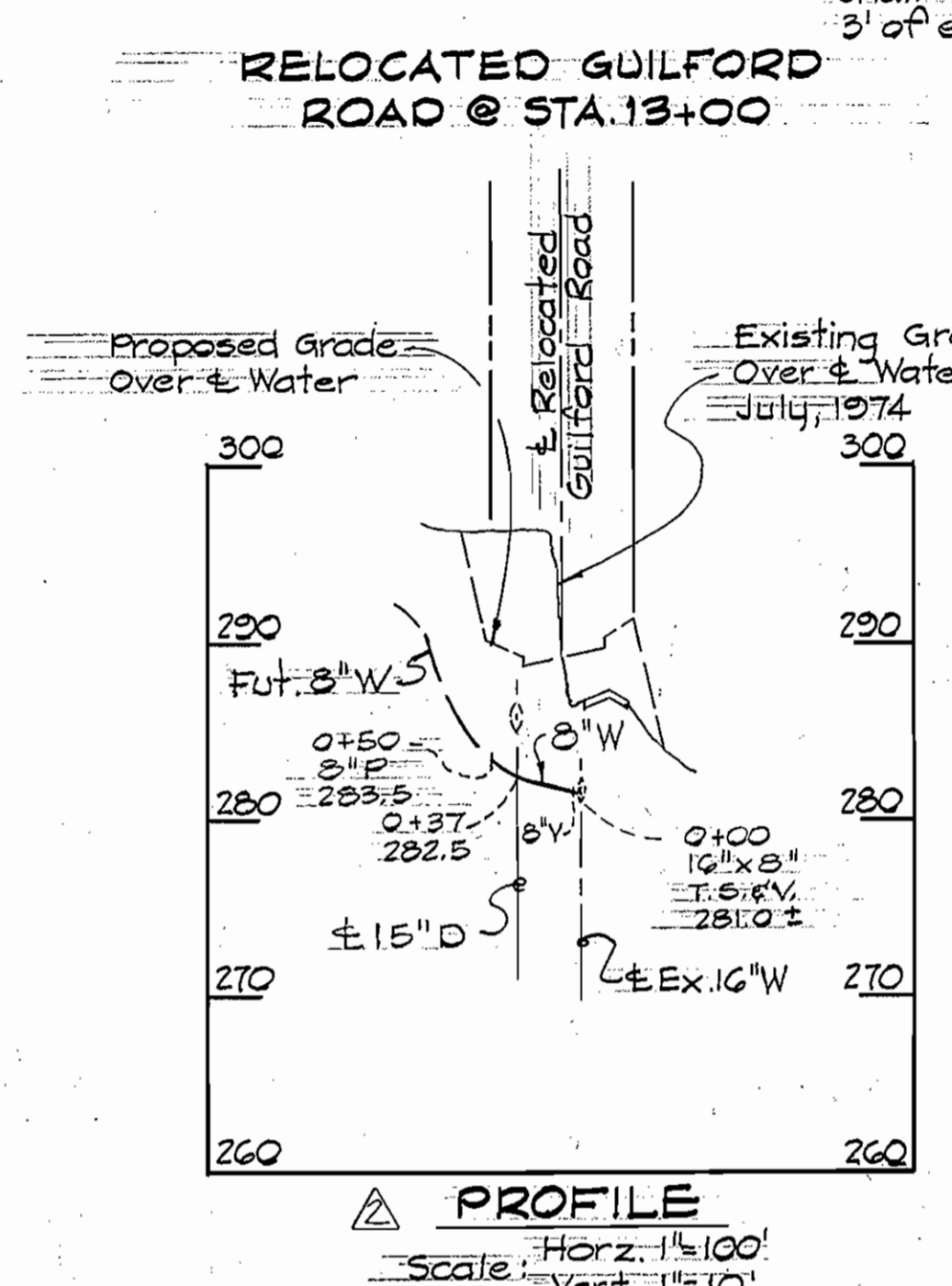
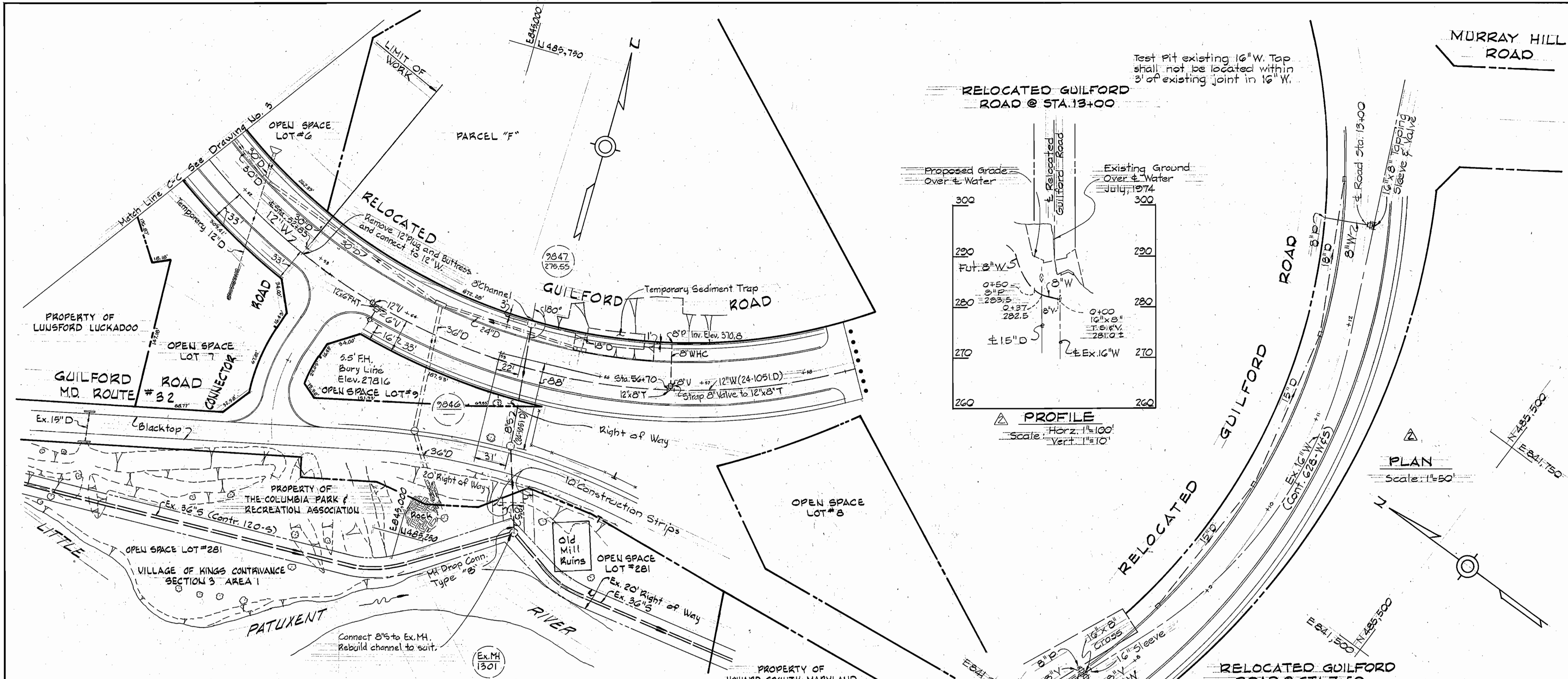
COLUMBIA
RIVERS CORPORATE PARK
ELECTION DISTRICT GUILFORD NO. 6

DRAWING
NO. 3
OF 6
SCALE
AS
SHOWN

W.O. 7486-2

MAY 21, 1982

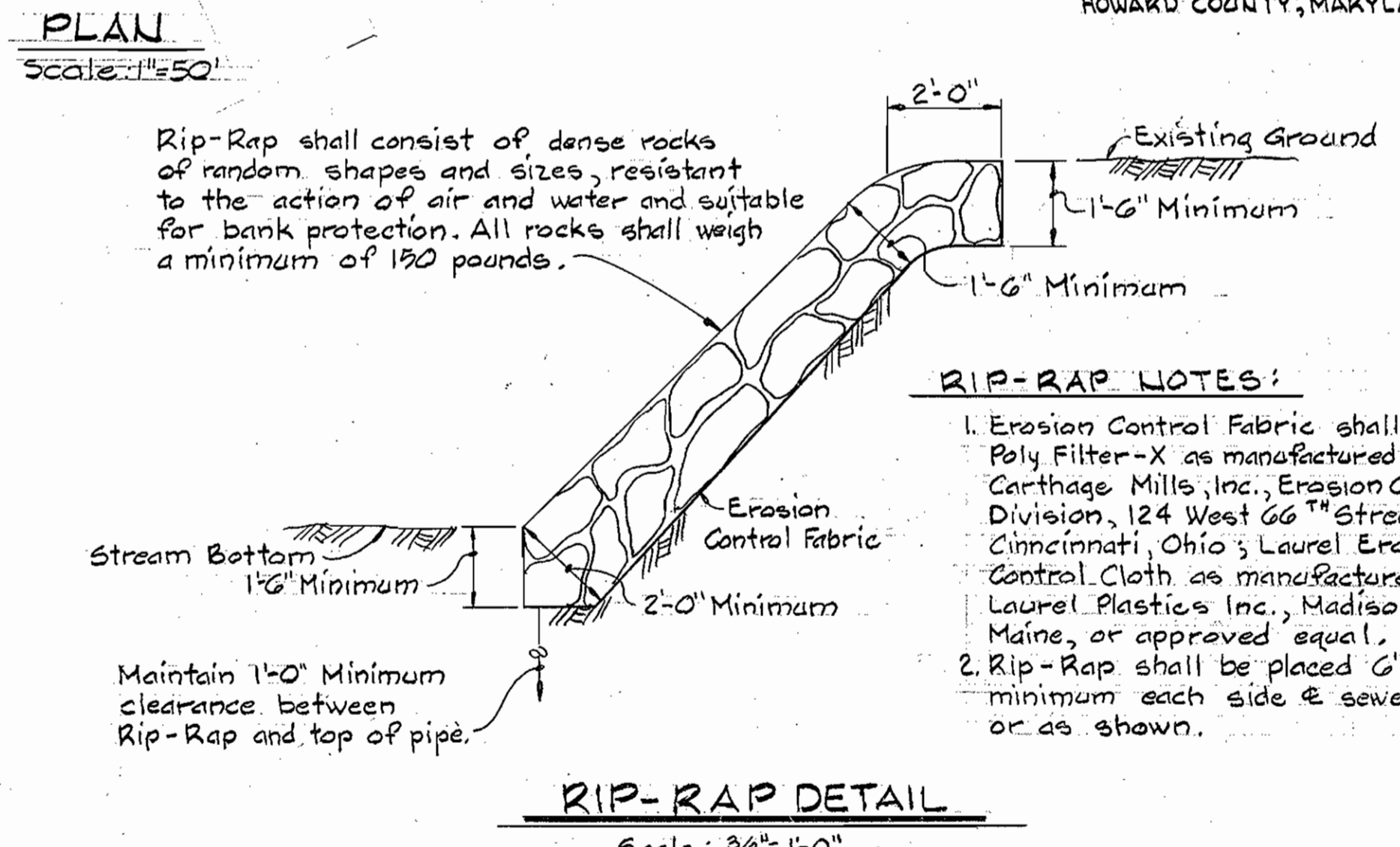
1012/3 WS



NOTE:
 The following Buttress dimensions shall be used:

12" x 1/2" H x B	A = 3'-0"
Standard Detail 2.21	B = 1'-0"
12" Plug	F = 2'-6"
Standard Detail 2.21	G = 4'-0"
12" x 12" T	I = 1'-10"
Standard Detail 2.23	J = 1'-5"

All other Buttresses shall be as per Standard Details.



RIP-RAP NOTES:

- Erosion Control Fabric shall be Poly Filter-X as manufactured by Carthage Mills, Inc., Erosion Control Division, 124 West 66th Street, Cincinnati, Ohio; Laurel Erosion Control Cloth as manufactured by Laurel Plastics Inc., Madison, Maine, or approved equal.
- Rip-Rap shall be placed 6' minimum each side & sewer or as shown.

PLAN
 Scale: 1"=50'

Rivers Corporate Park
 Section 2, Area 1
 Contract No. 24-1012-D



DEPARTMENT OF PUBLIC WORKS
 HOWARD COUNTY, MARYLAND

Director of Public Works - DATE
 Chief - Bureau of Engineering - DATE
 Chief - Bureau of Utilities - DATE
 Chief - Land Development Division - DATE

WHITMAN, REQUARDT AND ASSOCIATES
 ENGINEERS
 2315 ST. PAUL ST.
 BALTIMORE, MARYLAND

CONTRACT NO. 24-1012-D

8-24-82	Added Plan View; Added Profiles
No. Date	Revisions

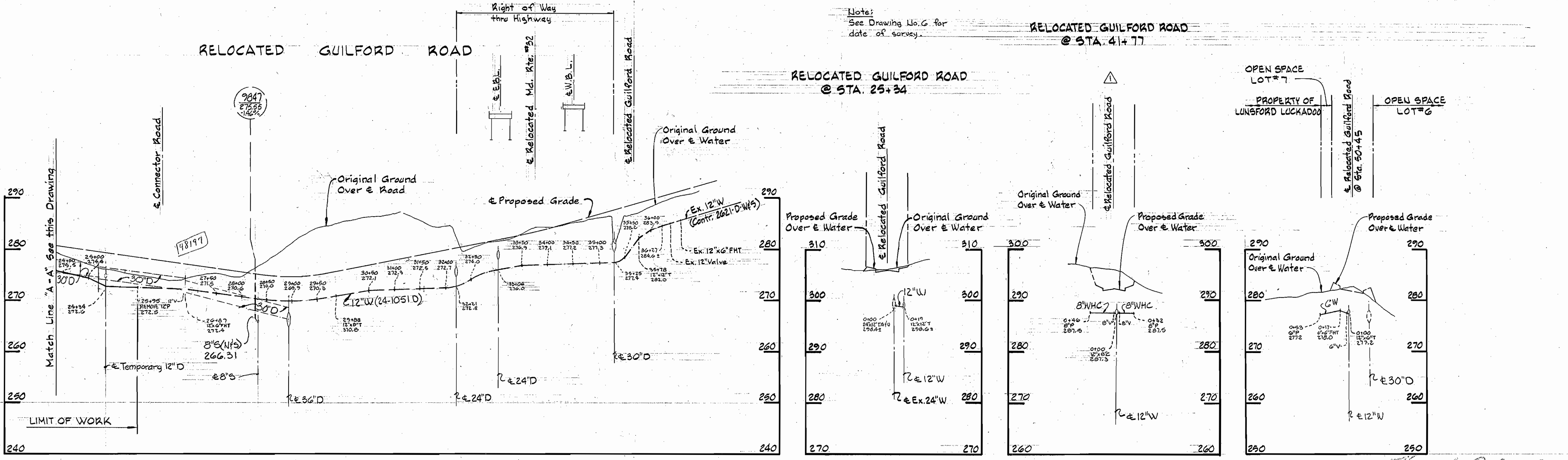
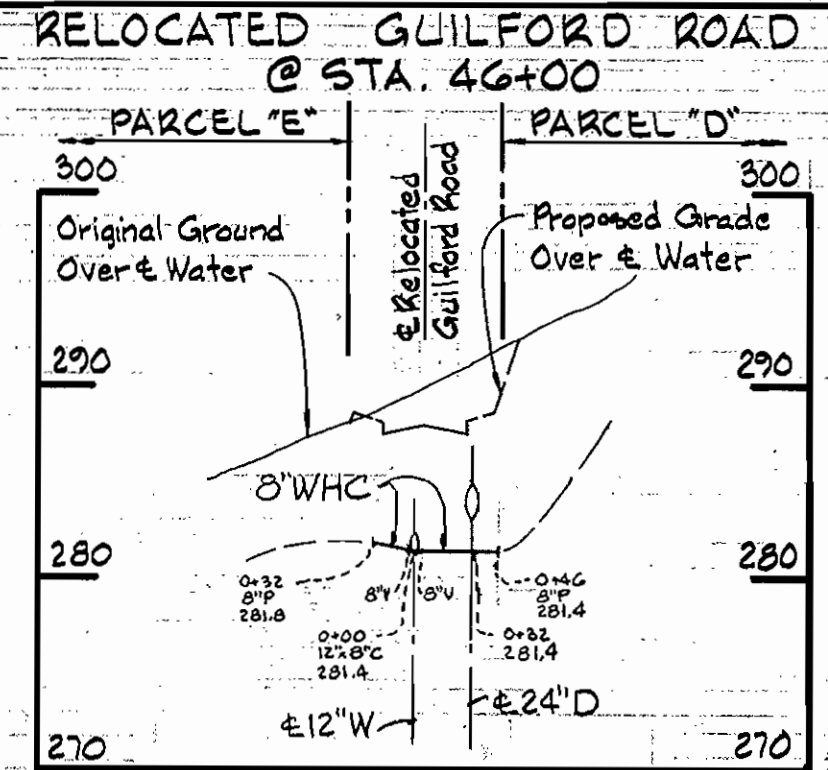
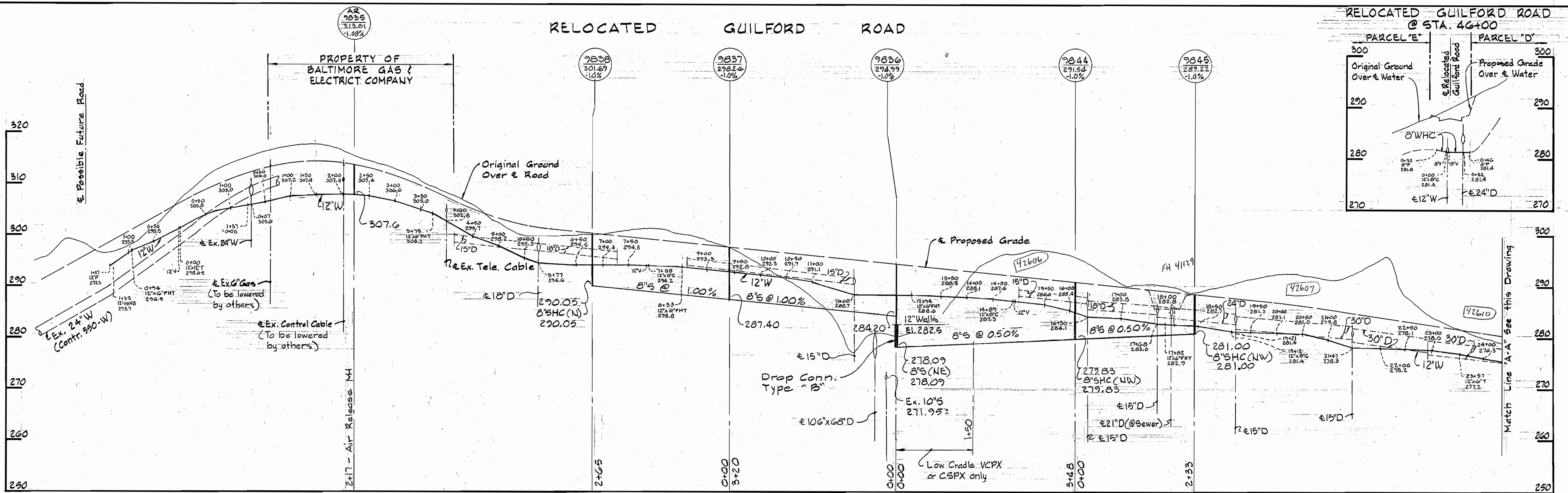
PLAN & DETAILS OF
 WATER & SEWER MAINS

COLUMBIA
 RIVERS CORPORATE PARK
 ELECTION DISTRICT GUILFORD NO. 6

DRAWING
 NO. 4
 OF 6
 SCALE
 AS
 SHOWN

AS SHOWN

1012/4 WS



Note:
See Drawing No. G for
date of survey.

DEPARTMENT OF PUBLIC WORKS
HOWARD COUNTY, MARYLAND
5-28-82
5-27-82

WHITMAN, REQUARD AND ASSOCIATES
ENGINEERS
2315 ST. PAUL ST.
BALTIMORE, MARYLAND

CONTRACT NO. 24-1012-D

PROFILES OF
WATER & SEWER MAINS

7/14/82	Added Profile, Sta. 41+77
No. DATE	REVISIONS

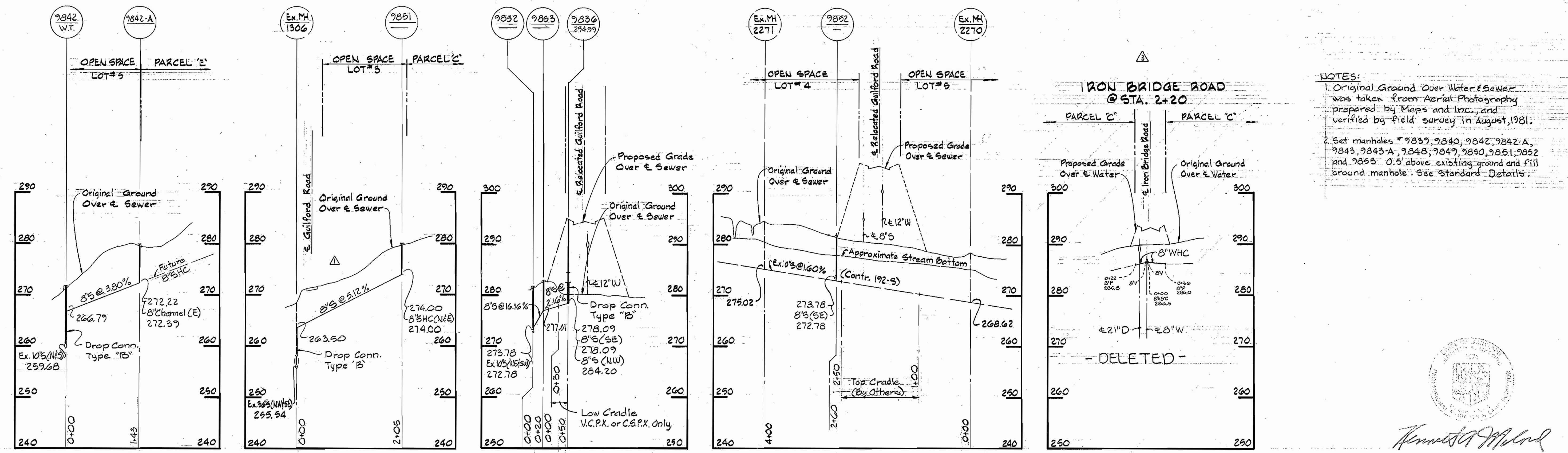
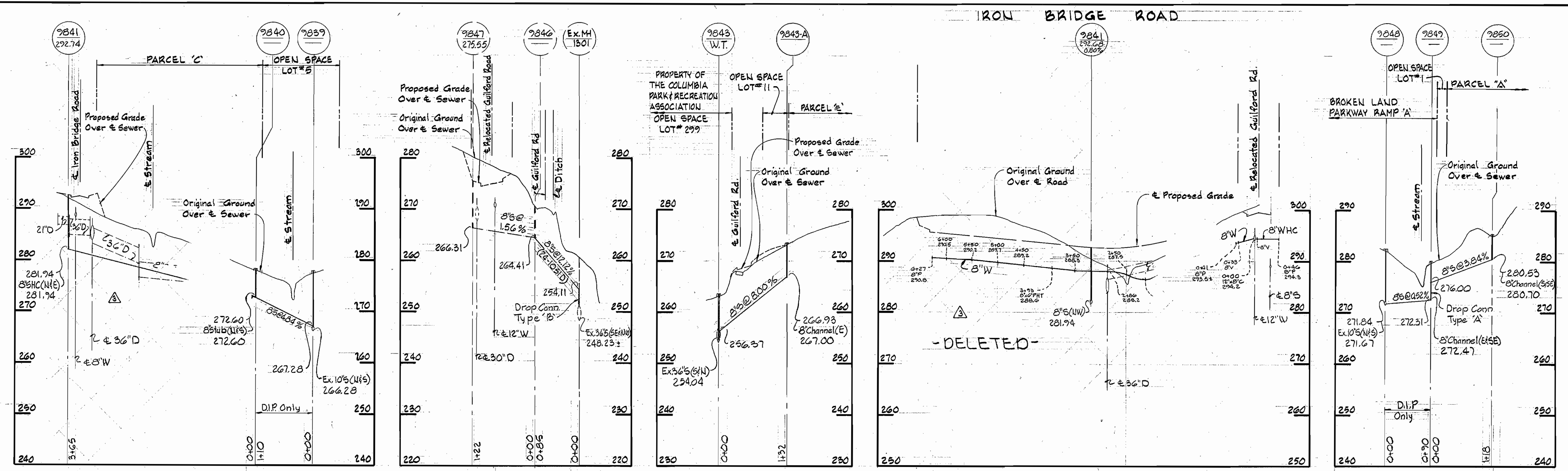
COLUMBIA
RIVERS CORPORATE PARK
ELECTION DISTRICT GUILFORD NO. 6

DRAWING
NO. 5
OF 6
SCALE
H:1"=100'
V:1"=10'

Rivers Corporate Park
Section 2, Area 1
Contract No. 24-1012-D

1012/5 WS

IRON BRIDGE ROAD



NOTES:
 1. Original Ground Over Water & Sewer was taken from Aerial Photography prepared by Maps and Inc., and verified by field survey in August, 1981.
 2. Set manholes 9839, 9840, 9842, 9842-A, 9843, 9843-A, 9848, 9849, 9850, 9851, 9852 and 9853 0.5' above existing ground and fill ground manhole. See Standard Details.



Rivers Corporate Park
 Section 2 Area 1
 Contract No. 24-1012-D

10/26/80	Deleted Iron Bridge Road
7/14/82	Corrected Profile
No. DATE.	REVISIONS

DEPARTMENT OF PUBLIC WORKS
 HOWARD COUNTY, MARYLAND
 Director of Public Works - DATE
 Chief - Bureau of Engineering - DATE
 Chief - Bureau of Utilities - DATE
 Chief - Land Development Division - DATE

WHITMAN, REQUARDT AND ASSOCIATES
 ENGINEERS
 2315 ST. PAUL ST.
 BALTIMORE, MARYLAND

CONTRACT NO. 24-1012-D

PROFILES OF
 WATER & SEWER MAINS

COLUMBIA
 RIVERS CORPORATE PARK
 ELECTION DISTRICT GUILFORD NO. 6

DRAWING NO. 6 OF 6
 SCALE H:1"=100' V:1"=10'

1012/6 WS