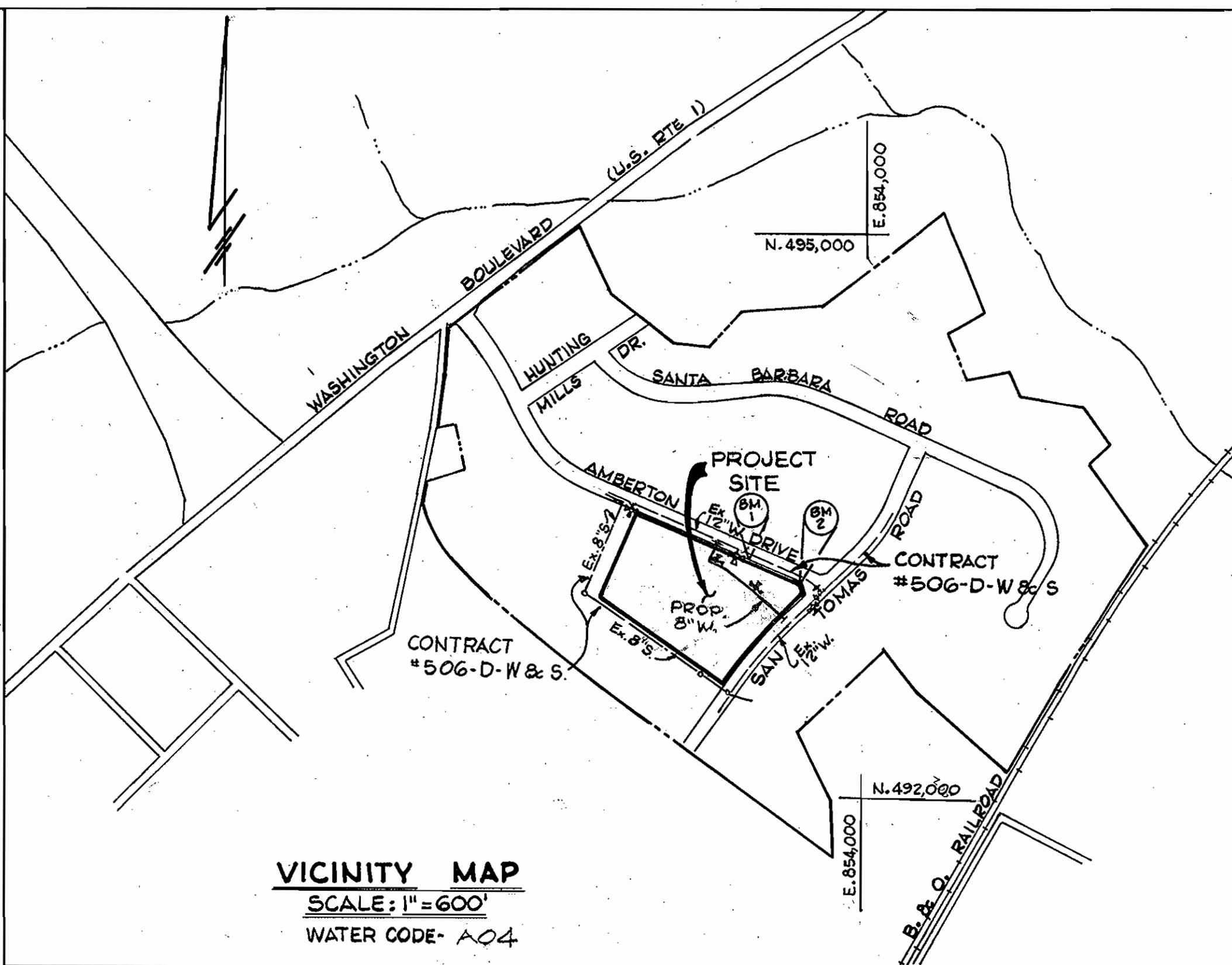


NOTE: PROPOSED IMPROVEMENTS, OTHER THAN 8" WATER AS SHOWN HEREON WERE FURNISHED BY OTHERS. SEE PLAN S.D.P.#79-174.

* Contractor To Test Pit Existing Utilities Prior To Laying Pipe To Determine Exact Location And Elevation.



VICINITY MAP
SCALE: 1" = 600'
WATER CODE - A04

TYPE OF BUILDING	WAREHOUSE
NUMBER OF LOTS	1
NUMBER OF W.H.C.	1
NUMBER OF S.H.C.	1
DRAINAGE AREA	PATAPSCO

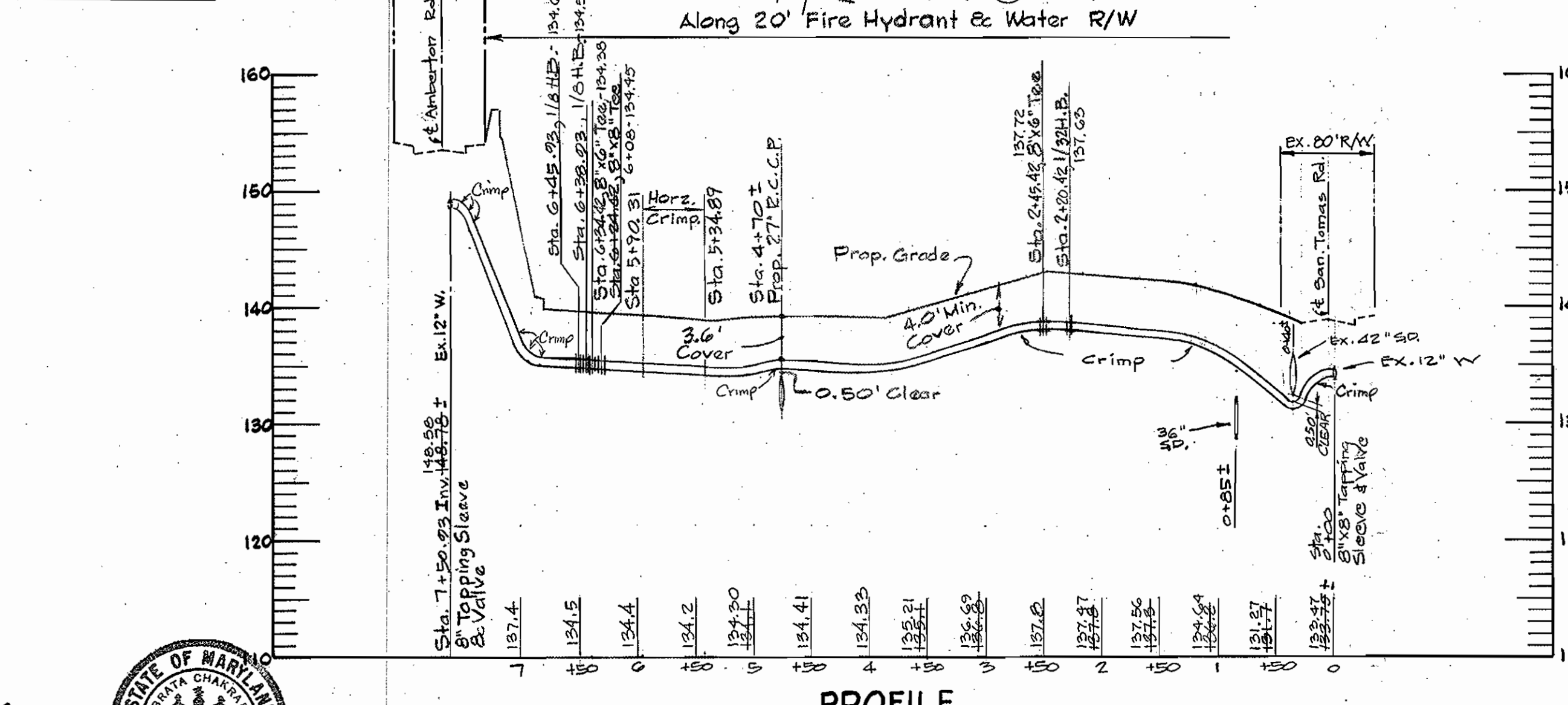
BENCH MARK: B.M.-1 ELEVATION: 151.07
DESCRIPTION: Cross Cut In South Top Of Curb, Sta. 20+48.66 Amberton Drive, + 22.25' Right of Way.

BENCH MARK: B.M.-2 ELEVATION: 147.28
DESCRIPTION: Cross Cut In South Top Of Curb, Sta. 24+02.49 Amberton Drive, + 22.25' Right of Way.

GENERAL NOTES

- 1.) Approximate Location Of Existing Mains Are Shown. The Contractor Shall Take All Necessary Precautions To Protect Existing Mains And Services And Uninterrupted Supply. Any Damage Incurred Shall Be Repaired Immediately.
- 2.) All Horizontal Controls Are Based On Maryland State Coordinates.
- 3.) All Vertical Controls Are Based On U.S.G.S. Datum.
- 4.) Clear All Utilities By A Minimum Of 6'. Clear All Poles 2'-0" Minimum Or Tunnel As Required.
- 5.) Contractor Shall Locate Existing Utilities In Advance Of Construction Operations In Vicinity Of Proposed Utilities.
- 6.) Contractor Shall Notify The Following Utilities Or Agencies At Least Five (5) Days Before Starting Work.
 - "Miss Utility" (Collect) 1-559-0100
 - Baltimore Gas & Electric Co.-Underground Electric Distribution Engineering "Damage Control", Mr. G.U. Zeller, Manager 234-5691
 - Baltimore Gas & Electric Co.-Underground Gas Distribution Engineering, Mr. Bell 234-5533
 - Chesapeake & Potomac Telephone Co. 725-9976
 - Bureau Of Utilities (Howard County) 992-2366
- 7.) Contractor Shall Remove Trees, Stumps, And Roots Along Line Of Excavation As Directed By Engineer. Payment For Such Removal Shall Be Included In The Unit Price Bid For "Excavation And Backfill For Water And Sewer Mains".
- 8.) Place Regulation "Men Working" And Warning Signs As Required To Comply With Maryland State Highway Administration "Manual For Highway Construction And Maintenance Operations".
- 9.) All Water Mains To Be C.I.P. Or D.I.P. Unless Otherwise Noted.
- 10.) Top Of Water Mains To Have A Minimum Of 3.5' Cover Unless Otherwise Noted.
- 11.) All Valves Shall Be Strapped To Tees In Accordance With Standard Details.
- 12.) Block All Fittings With Concrete. See Standards Bound In Specifications.
- 13.) Bury Line Elevations On Fire Hydrants Shall Be Set To The Elevations Shown On The Drawings. All Fire Hydrants Shall Be Strapped And Buttressed With Concrete In Accordance With Standard Details. Soil Around The Fire Hydrant To Be Compacted In Accordance With Section 5-15 Of The Standard Specifications.
- 14.) All Water Main Elevations Shown Are Invert (I) Elevations.
- 15.) Sediment Control Measures For This Contract Will Be Implemented In Accordance With Grading And Sediment And Erosion Control Plan S.D.P.#79-174.
- 16.) Water Main And Water House Connections Must Be Placed So As To Have At Least One (1) Foot Separation From The Sanitary Sewer And Sewer House Connection As They Pass Above It.
- 17.) Minimum Crimp Radius As Specified By Pipe Manufacturer.

PLAN
SCALE: 1" = 50'



PROFILE
SCALE: HORIZ. 1" = 100', VERT. 1" = 10'

QUANTITIES			
ITEM	ESTIMATED	AS-BUILT	MATERIAL/SUPPLIER
8" Water	761 L.F.	747	U.S. PIPE / U.S. PIPE
8"x8" Tee	1 Ea.	1	U.S. PIPE / U.S. PIPE
1/2 Band (8")	2 Ea.	2	U.S. PIPE / U.S. PIPE
1/32 Band (8")	1 Ea.	1	U.S. PIPE / U.S. PIPE
8" Valve	1 Ea.	1	MUELLER/A&P
8" Tapping Sleeve & Valve	2 Ea.	2	MUELLER/A&P
6" Water	14 L.F.	14	U.S. PIPE / U.S. PIPE
6"x8" Tee	2 Ea.	2	U.S. PIPE / U.S. PIPE
6" F.H. & Valve	2 Ea.	2	AMERICAN DARLING/A&P
6" San	15 L.F.	-	-

SEDIMENT CONTROL MEASURES FOR THIS CONTRACT WILL BE IMPLEMENTED IN ACCORDANCE WITH ARTICLE #15 OF THE STANDARD SPECIFICATIONS AND S.D.P.#79-174.

REVIEWED FOR THE HOWARD SOIL CONSERVATION DISTRICT MEETS TECHNICAL REQUIREMENTS.
James J. Reiser 9-9-81
SIGN DATE
U.S. SOIL CONSERVATION SERVICE

THIS CONSTRUCTION PLAN IS APPROVED FOR SOIL EROSION AND SEDIMENT CONTROL BY THE HOWARD SOIL CONSERVATION DISTRICT.
William T. Rowe 9-9-81
APPROVED DATE
HOWARD SOIL CONSERVATION DISTRICT

DEPARTMENT OF PUBLIC WORKS
HOWARD COUNTY, MARYLAND
Robert M. Beinger
CHIEF - BUREAU OF UTILITIES - DATE
George W. Stephens, Jr.
CHIEF - BUREAU OF ENGINEERING - DATE

DEPARTMENT OF PUBLIC WORKS
HOWARD COUNTY, MARYLAND
George F. Newman 9-15-81
DIRECTOR - PUBLIC WORKS - DATE
James J. Reiser 9-9-81
CHIEF - LAND DEVELOPMENT - DATE

CONTRACT NO. 44-1011-D

PLAN AND PROFILE
FOR
PROPOSED 8" WATER

ROUTE ONE HUNDRED BUSINESS PARK
PROPOSED WAREHOUSE
PARCEL B-1 ~ BLOCK B
HOWARD CO., MD. ~ ELECT. DIST. NO. 1 ~ AUGUST 25, 1981

DRAWING NO. 1 OF 1	SCALE AS SHOWN	DESIGN - R.W.R. DRAWN - T.L.B. CHECKED - T.C. PROJ. #4562
--------------------	----------------	---