

BENCH MARKS

B.M. #2 ELEV. 420.85
 R.R. SPIKE SET @ TRAVERSE STATION "10-2"
 @ NORTHEAST CORNER OF PINE ORCHARD LANE
 AND U.S. ROUTE 40
 B.M. #3 ELEV. 406.07
 IRON PIPE SET @ TRAVERSE STATION "10-5"
 SET IN LOT #2.

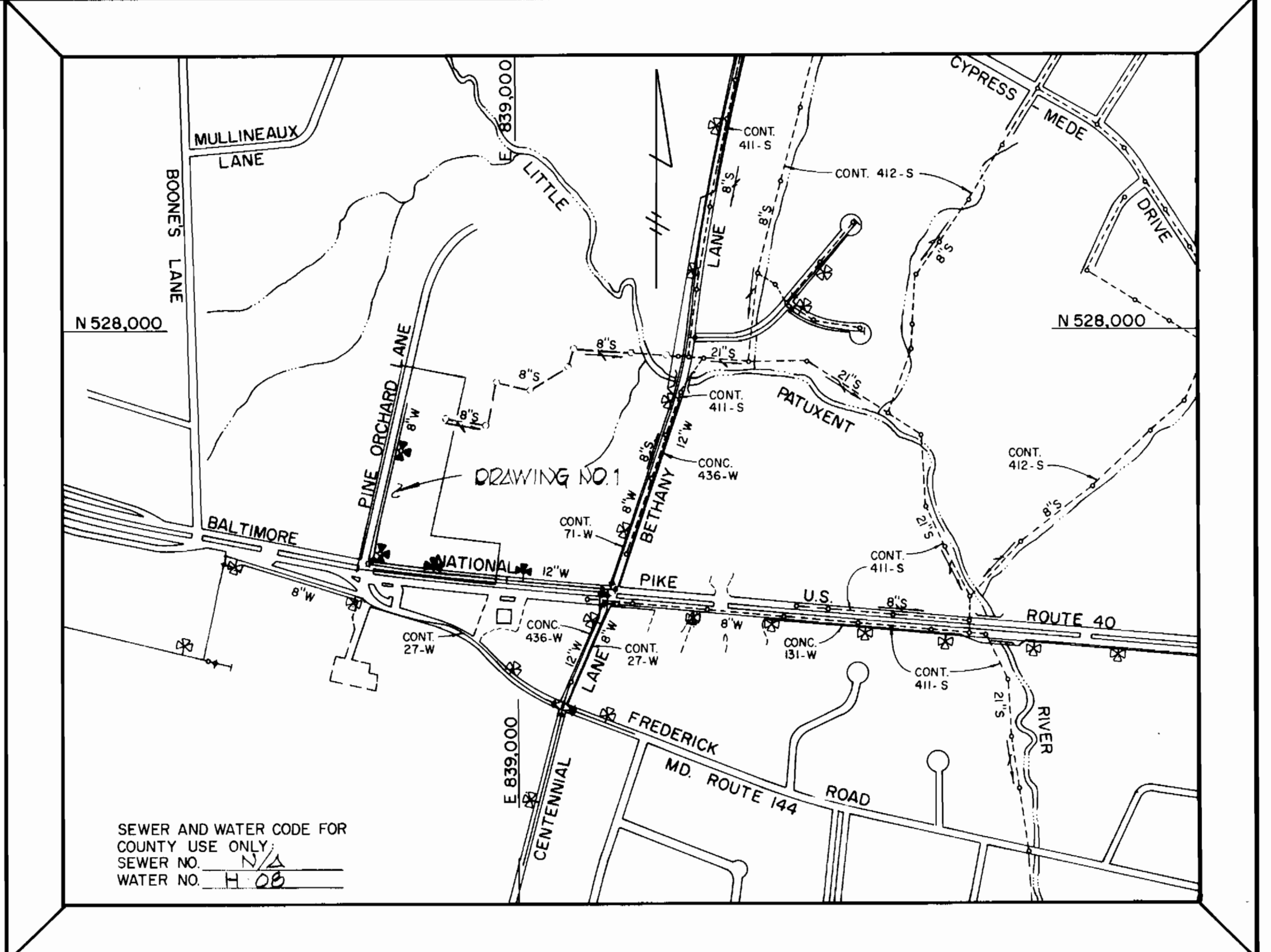
SEDIMENT CONTROL MEASURES FOR THIS CONTRACT WILL BE IMPLEMENTED IN ACCORDANCE WITH ARTICLE 15 OF THESE SPECIFICATIONS AND ALSO AS SHOWN ON THE GRADING AND SEDIMENT CONTROL PLAN F-02-21

REVIEWED FOR HOWARD COUNTY SOIL CONSERVATION DISTRICT AND MEETS TECHNICAL REQUIREMENTS

James M. Helms OFFICIAL
 U.S. SOIL CONSERVATION SERVICE DATE

THIS DEVELOPMENT PLAN IS APPROVED FOR EROSION AND SEDIMENT CONTROL BY THE HOWARD COUNTY SOIL CONSERVATION DISTRICT

APPROVED: *John V. Ramey* OFFICIAL
 HOWARD COUNTY SOIL CONSERVATION DISTRICT DATE



TYPE OF BUILDINGS: (5) ZONED B-1
 NUMBER OF LOTS: 5
 NUMBER OF SEWER HOUSE CONN.: 4
 NUMBER OF WATER HOUSE CONN.: 5
 DRAINAGE AREA: LITTLE PATUXENT

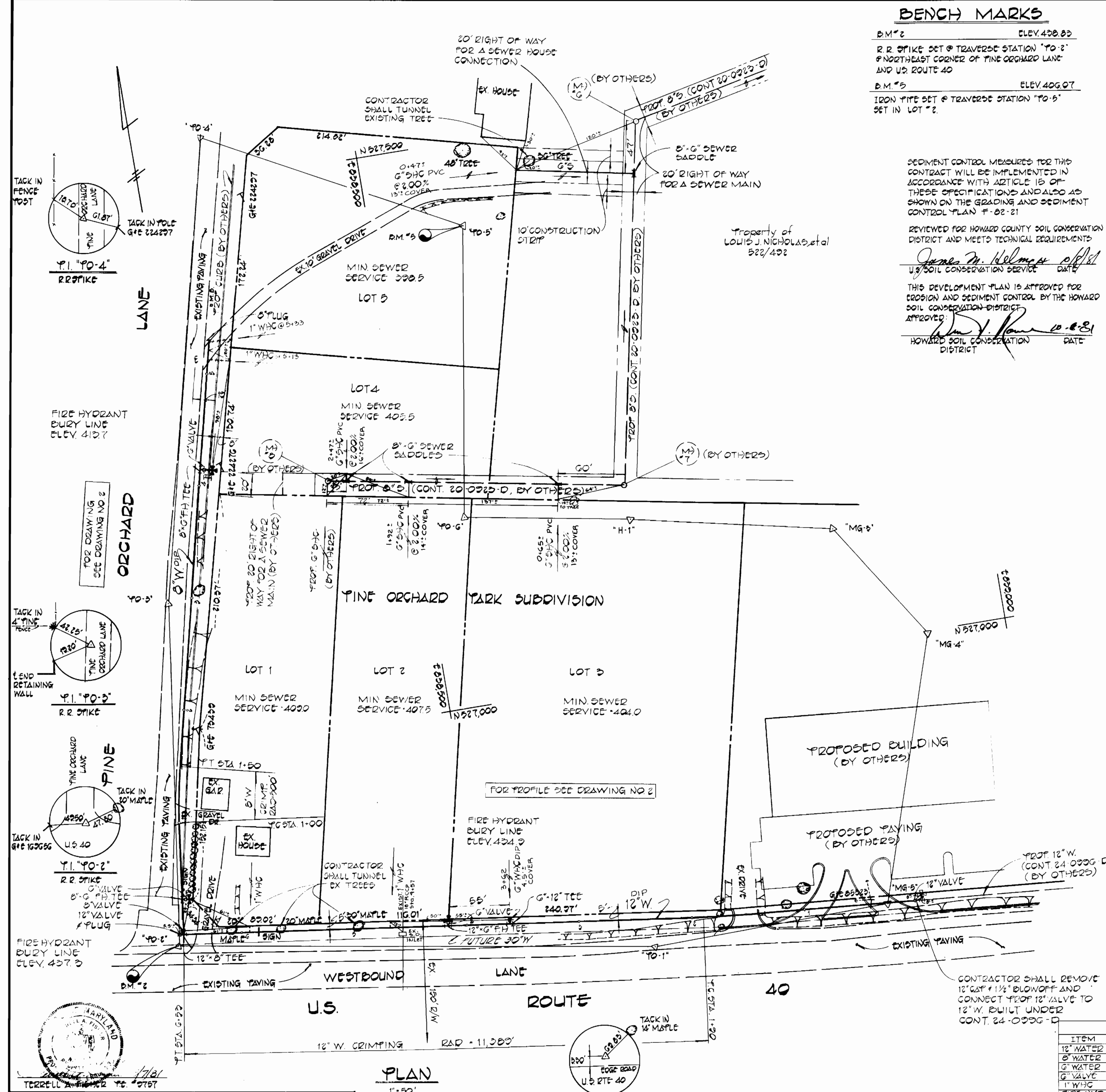
VICINITY MAP
 SCALE: 1" = 600'

GENERAL NOTES

- APPROXIMATE LOCATION OF EXISTING MAINS ARE SHOWN. THE CONTRACTOR SHALL TAKE ALL NECESSARY PRECAUTIONS TO PROTECT EXISTING MAINS AND SERVICES AND MAINTAIN UNINTERRUPTED SUPPLY. ANY DAMAGE INCURRED SHALL BE REPAIRED IMMEDIATELY TO THE SATISFACTION OF THE ENGINEER, AT THE CONTRACTORS EXPENSE.
- ALL HORIZONTAL CONTROLS ARE BASED ON MARYLAND STATE COORDINATES.
- ALL VERTICAL CONTROLS ARE BASED ON U.S.G.S. DATUM.
- ALL PIPE ELEVATIONS SHOWN ARE INVERT ELEVATIONS.
- CLEAR ALL UTILITIES BY A MINIMUM OF 6" CLEAR ALL POLES BY 2'-0" MINIMUM OR TUNNEL AS REQUIRED. ANY COST INCURRED TO THE CONTRACTOR FOR TUNNELING OR BRACING AT POLES SHALL BE INCLUDED IN UNIT PRICES BID FOR EXCAVATION AND BACKFILL.
- FOR MATERIALS AND CONSTRUCTION METHODS USE HOWARD COUNTY STANDARD SPECIFICATIONS.
- CONTRACTOR SHALL LOCATE EXISTING UTILITIES A MINIMUM OF TWO (2) WEEKS IN ADVANCE OF CONSTRUCTION OPERATIONS IN THE VICINITY OF PROPOSED UTILITIES AT HIS OWN EXPENSE.
- CONTRACTOR SHALL NOTIFY THE FOLLOWING UTILITIES OR AGENCIES AT LEAST FIVE (5) WORKING DAYS BEFORE STARTING WORK SHOWN ON THESE PLANS:
 - BALTIMORE GAS AND ELECTRIC CO. - UNDERGROUND ELECTRIC DISTRIBUTION CUSTOMER SERVICE - (685-0123)
 - BALTIMORE GAS AND ELECTRIC CO. - UNDERGROUND GAS DISTRIBUTION CUSTOMER SERVICE - (685-0123)
 - ENGINEERING - "DAMAGE CONTROL" - (234-5621)
 - "MISS UTILITY" - (1-559-0100)
 - CHESAPEAKE & POTOMAC (C&P) TELEPHONE COMPANY - (725-9976)
 - BUREAU OF UTILITIES, HOWARD COUNTY - (992-2366)
- TREES ARE TO BE PROTECTED FROM DAMAGE TO MAXIMUM EXTENT. TREES LOCATED WITHIN THE CONSTRUCTION STRIP ARE NOT TO BE REMOVED OR DAMAGED BY THE CONTRACTOR.
- CONTRACTOR SHALL REMOVE TREES, STUMPS AND ROOTS ALONG LINE OF EXCAVATION AS DIRECTED BY THE ENGINEER. PAYMENT FOR SUCH REMOVAL SHALL BE INCLUDED IN THE UNIT PRICE BID FOR EXCAVATION & BACKFILL.
- PLACE REGULATION "MEN WORKING" AND WARNING SIGNS AS REQUIRED TO COMPLY WITH MARYLAND STATE HIGHWAY ADMINISTRATION MANUAL OF TRAFFIC CONTROL FOR HIGHWAY CONSTRUCTION AND MAINTENANCE OPERATIONS.
- ALL WATER MAINS TO BE C.I.P. OR D.I.P. UNLESS OTHERWISE NOTED.
- TOP OF ALL WATER MAINS TO HAVE A MINIMUM OF 3-1/2" COVER UNLESS OTHERWISE NOTED.
- VALVES ADJACENT TO TEES SHALL BE STRAPPED TO TEES.
- BLOCK ALL FITTINGS WITH CONCRETE.
- BURY LINE ELEVATIONS ON FIRE HYDRANTS SHALL BE SET TO THE ELEVATIONS SHOWN ON THE DRAWINGS. ALL FIRE HYDRANTS SHALL BE STRAPPED AND BUTTRESSED WITH CONCRETE IN ACCORDANCE WITH STANDARD DETAILS. SOIL AROUND THE FIRE HYDRANT TO BE COMPACTED IN ACCORDANCE WITH SECTION 5-15 OF THE STANDARD SPECIFICATIONS.
- ALL WATER HOUSE CONNECTIONS SHALL BE FOR AN INSIDE METER SETTING.
- THE CONTRACTOR SHALL NOT OPERATE ANY WATER MAIN VALVES ON THE EXISTING SYSTEM.
- WATER MAIN AND WATER HOUSE CONNECTION LINES MUST BE PLACED SO AS TO HAVE AT LEAST ONE (1) FOOT SEPARATION FROM THE SEWER MAIN OR SEWER HOUSE CONNECTION AS THEY PASS ABOUT IT.

QUANTITIES			
ITEM	QTY	AS BUILT	SUPPLIER
12" WATER	650 LF	655 LF	Griffin
8" WATER	500 LF	505 LF	Griffin
6" WATER	25 LF	25 LF	Griffin
6" VALVE	1 EA	1 EA	A.K.D.
1" W.H.C.	20 LF	20 LF	Flow
FIRE HYD.	5 EA	5 EA	Dresser
6" FH VALVES	5 EA	5 EA	Flow

CONTRACT NO. 44-1010-D
 PINE ORCHARD LANE
 WATER EXTENSION
 HOWARD COUNTY, MARYLAND



PLAN
 1" = 50'

DEPARTMENT OF PUBLIC WORKS
 HOWARD COUNTY, MARYLAND
 Director of Public Works: *W. F. Neuman* 10-16-81
 Chief, Bureau of Engineering: *W. G. R. R...* 10/16/81
 Chief, Bureau of Utilities: *W. G. R. R...* 10-15-81
 Chief, Land Development Division: *W. G. R. R...*

FISHER, COLLINS AND CARTER, INC.
 CIVIL ENGINEERS AND LAND SURVEYORS
 8388 COURT AVENUE
 ELLICOTT CITY, MARYLAND 21043

CONTRACT NO. 44-1010-D

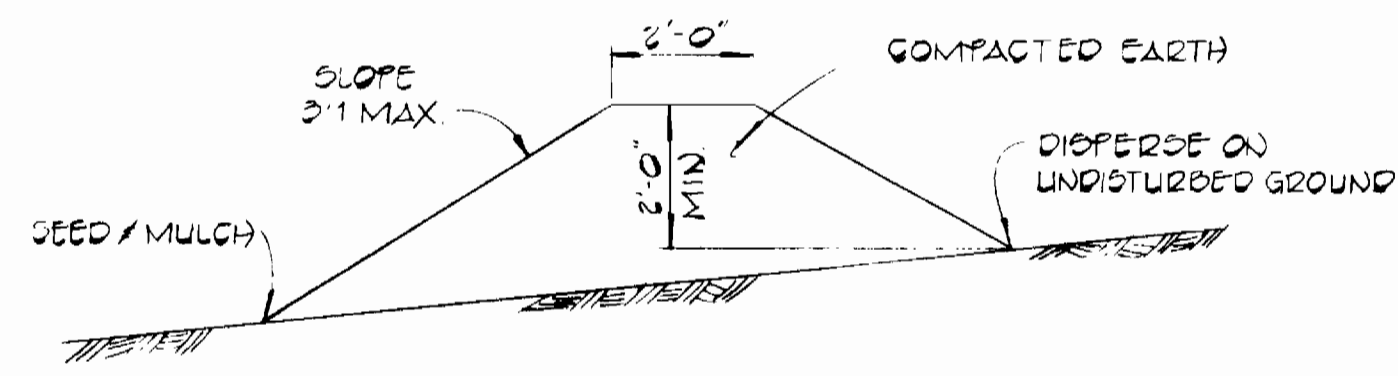
PLAN
WATER MAINS

PINE ORCHARD LANE
ELECTION DISTRICT 2
HOWARD COUNTY, MARYLAND

DRAWING
 NO. 1
 OF 2

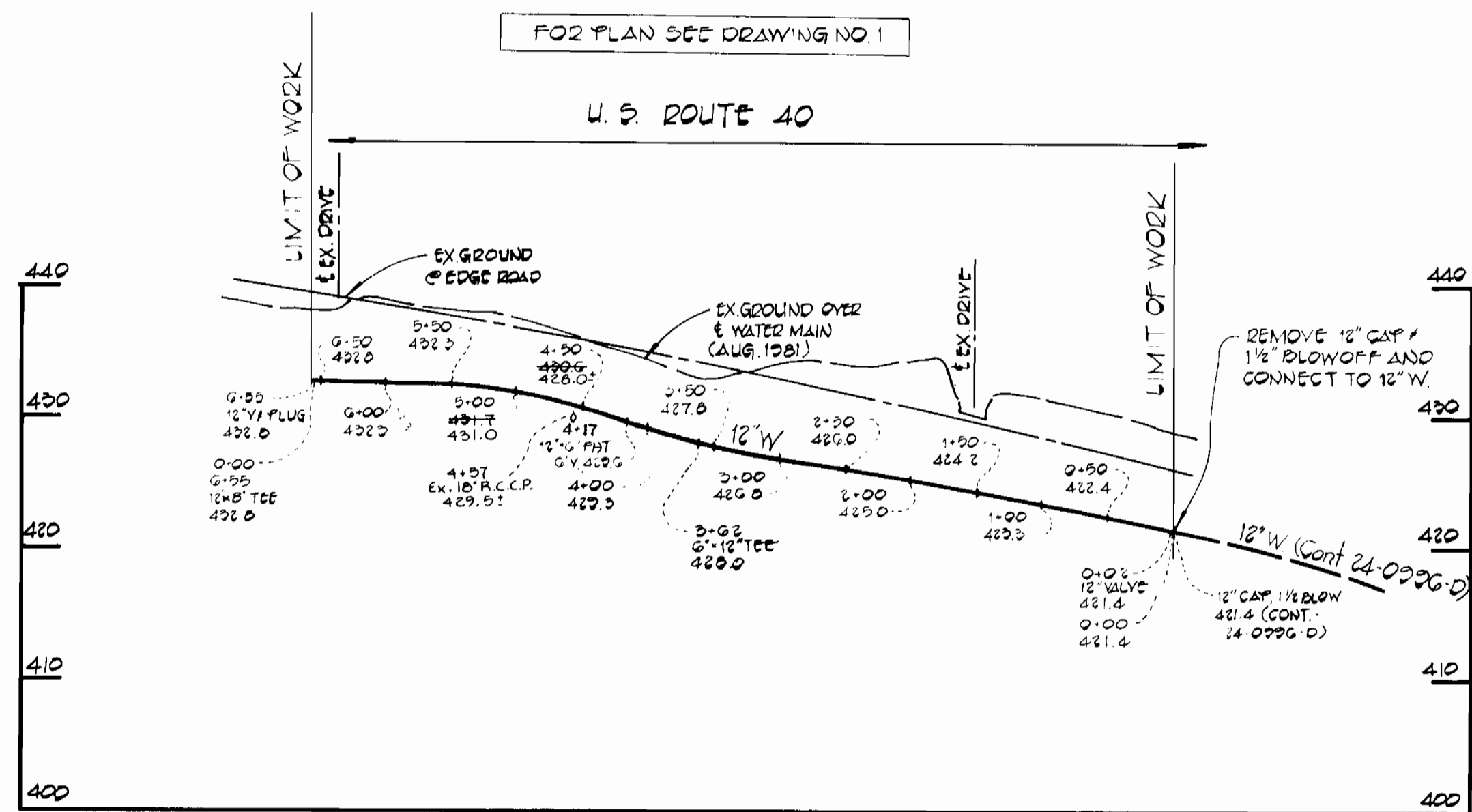
SCALE
 AS SHOWN

DES: D.B.S.
 DRN: D.B.S.
 CHK: T.A.F.

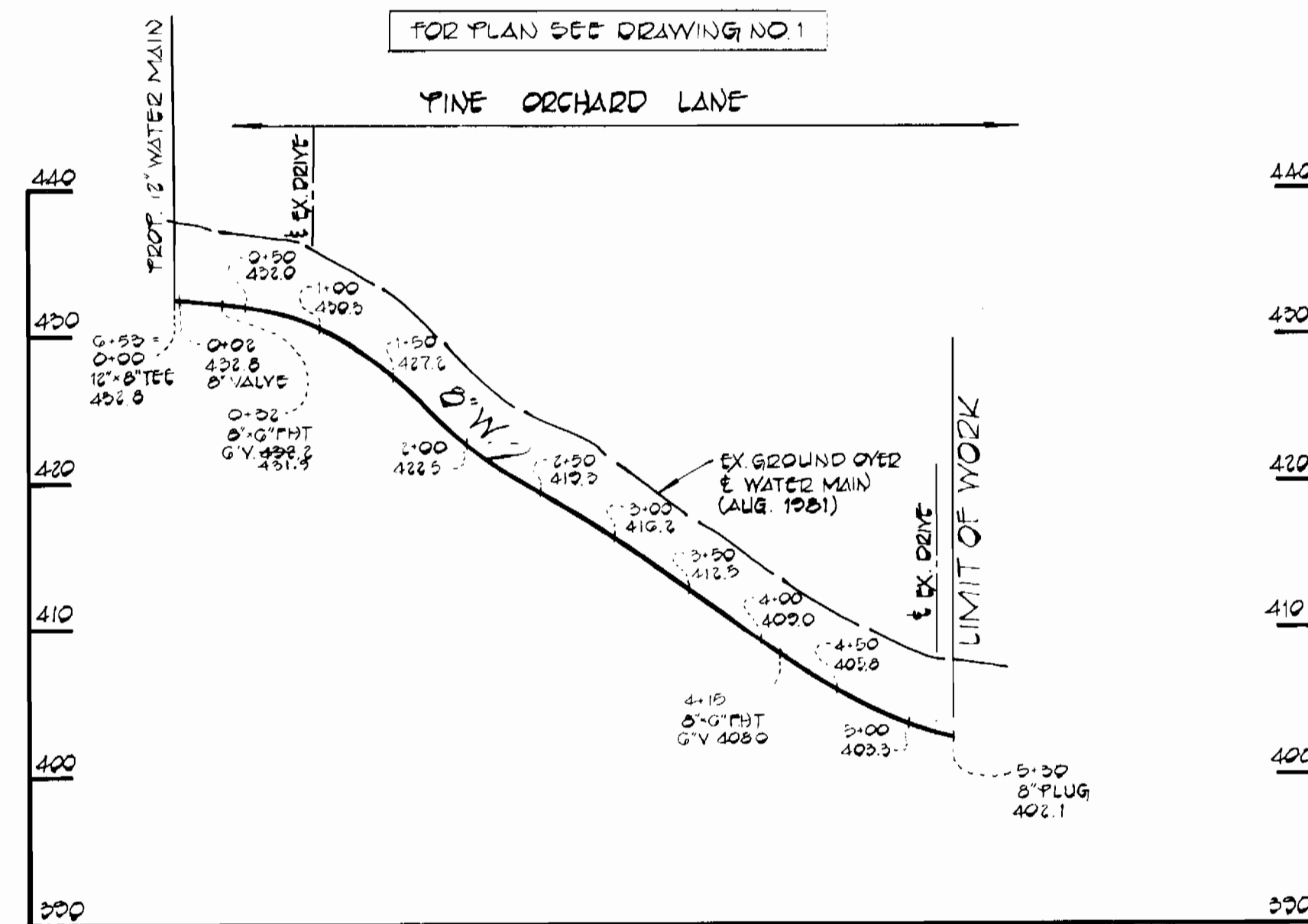


TEMPORARY EARTH DIVERSION BERM
NO SCALE

DIVERSION BERMS ARE REQUIRED EVERY 250 FEET ON CONTINUOUS SLOPES OF 4% OR GREATER. THE BERMS SHALL CONFORM TO THE TYPICAL SECTION SHOWN HEREON AND SHALL BE CONSTRUCTED ACROSS THE CONSTRUCTION AREA IMMEDIATELY AFTER THE BACKFILLING OF THE PIPE TRENCH AND PRIOR TO PLACING STABILIZATION IN ORDER TO PREVENT EROSION OF THE BACKFILLED AREAS.



PROFILE
SCALE: HOR. 1"=100'
VERT. 1"=10'



PROFILE
SCALE: HOR. 1"=100'
VERT. 1"=10'



DEPARTMENT OF PUBLIC WORKS
HOWARD COUNTY, MARYLAND
Director of Public Works: *Mark F. Neuman* 10-16-81
Chief, Bureau of Engineering: *William E. Riley* 10/16/81
Chief, Land Development Division: *William E. Riley* 10-16-81

FISHER, COLLINS AND CARTER, INC.
CIVIL ENGINEERS AND LAND SURVEYORS
8388 COURT AVENUE
ELLCOTT CITY, MARYLAND 21043

CONTRACT NO. 44-1010-D

PROFILE
WATER MAINS

PINE ORCHARD LANE
ELECTION DISTRICT 2
HOWARD COUNTY, MARYLAND

DRAWING NO. 2 OF 2	SCALE AS SHOWN	DES. D. B. S.
		DRN. D. B. S.
		CHK. T. A. F.

CONTRACT NO. 44-1010-D
PINE ORCHARD LANE
WATER EXTENSION
HOWARD COUNTY, MARYLAND