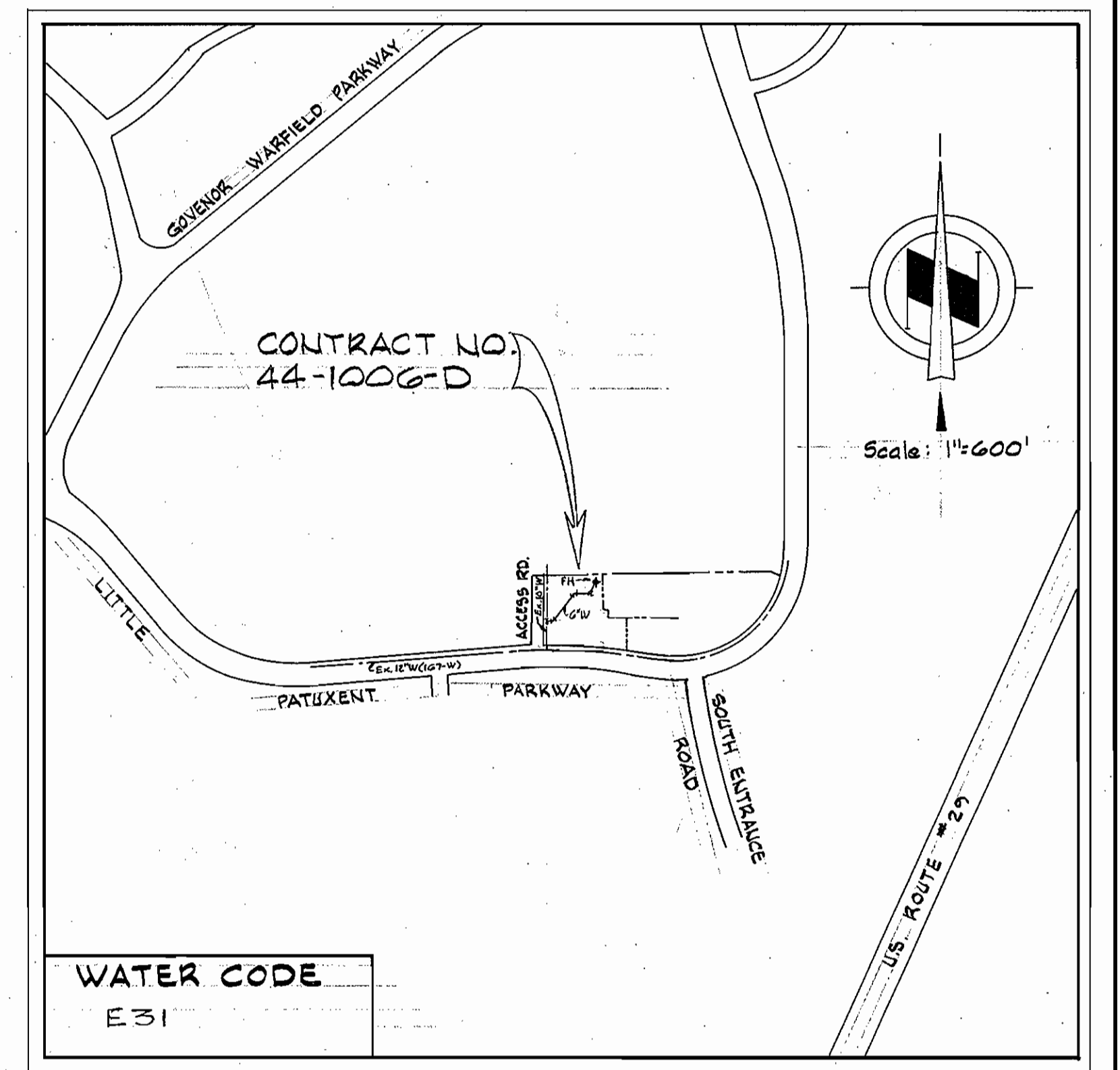
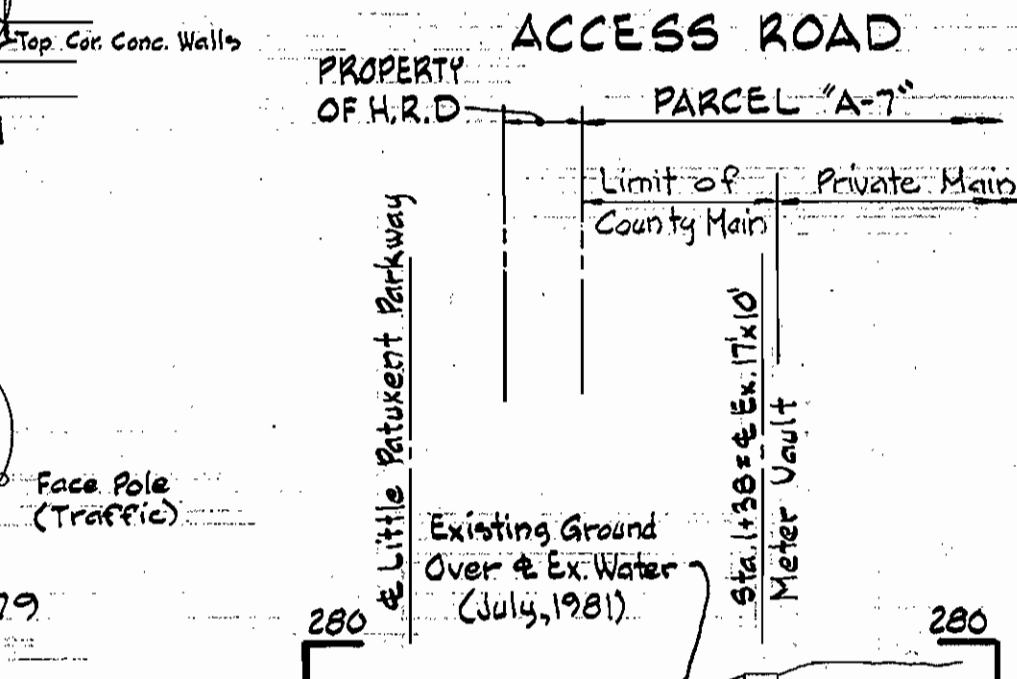
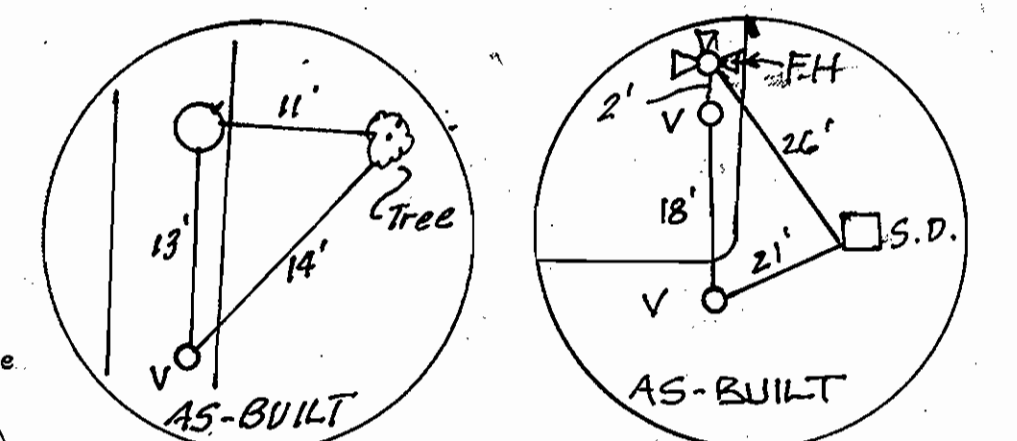


QUANTITIES			
ITEM	BID	AS-BUILT	MATERIAL/SUPPLIER
6" Water - LF	325	323	BELAIR RD. SUPPLY
6" V (Excluding FHV)	2	2	" " "
Fire Hydrants Ea.	1	1	" " "
10" G.T.S. & V.	1	1	" " "



**GENERAL NOTES**

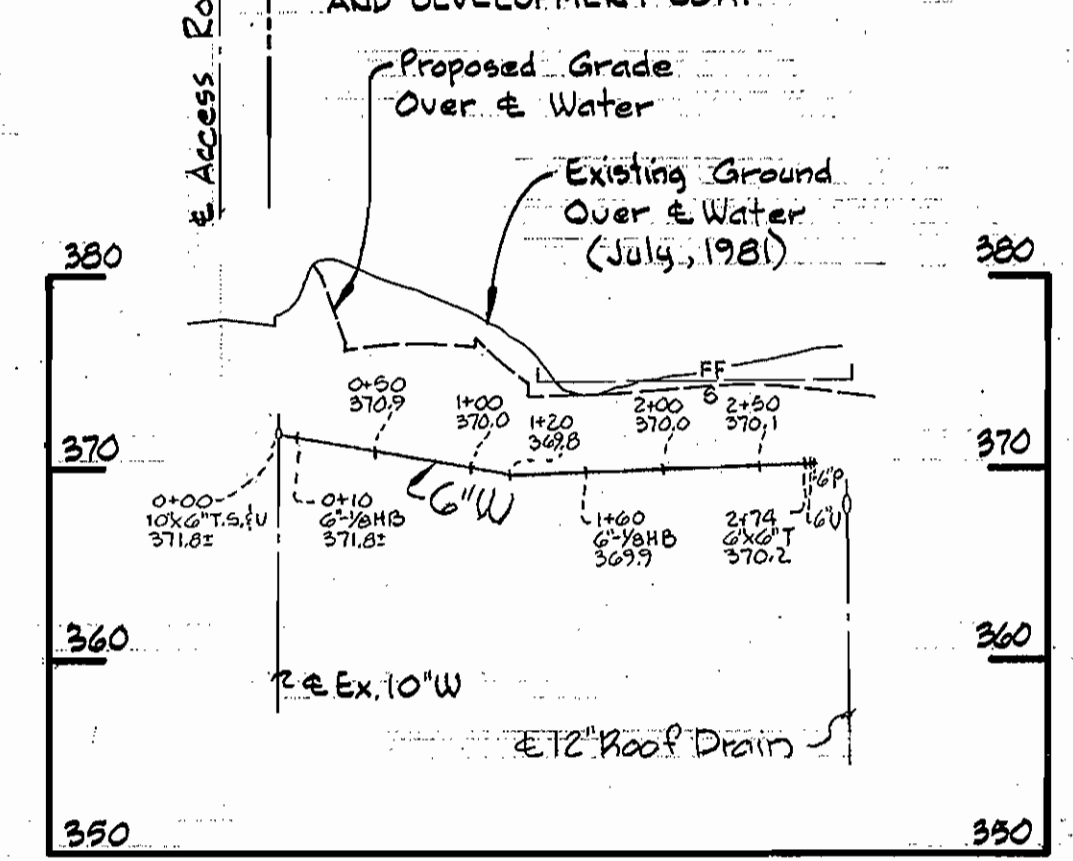
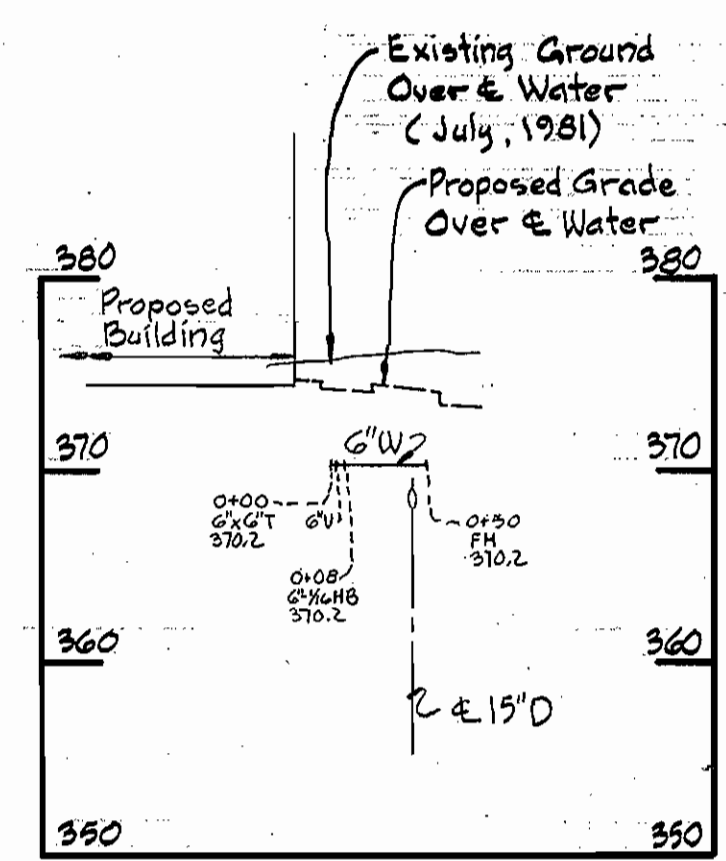
- APPROXIMATE LOCATION OF EXISTING MAINS ARE SHOWN. THE CONTRACTOR SHALL TAKE ALL NECESSARY PRECAUTIONS TO PROTECT EXISTING MAINS AND SERVICES AND MAINTAIN UNINTERRUPTED SUPPLY. ANY DAMAGE INCURRED SHALL BE REPAIRED IMMEDIATELY TO THE SATISFACTION OF THE ENGINEER, AT THE CONTRACTOR'S EXPENSE.
- ALL PIPE ELEVATIONS SHOWN ARE INVERT ELEVATIONS.
- CONTRACTOR SHALL LOCATE EXISTING UTILITIES A MINIMUM OF TWO WEEKS IN ADVANCE OF CONSTRUCTION OPERATIONS IN THE VICINITY OF UTILITIES AT HIS EXPENSE.
- FOR DETAILS NOT SHOWN ON THE DRAWINGS, USE HOWARD COUNTY STANDARD DETAILS.
- FOR MATERIALS AND CONSTRUCTION REQUIREMENTS, USE HOWARD COUNTY STANDARD SPECIFICATIONS.
- ALL HORIZONTAL CONTROLS ARE BASED ON MARYLAND STATE COORDINATES.
- ALL VERTICAL CONTROLS ARE BASED ON USGS DATUM.
- CLEAR ALL UTILITIES BY A MINIMUM OF 6". CLEAR ALL POLES BY 2'-0" MINIMUM OR TUNNEL AS REQUIRED. THE COST FOR TUNNELING OR BRACING POLES SHALL BE INCLUDED IN APPROPRIATE UNIT PRICES BID.
- CONTRACTOR SHALL NOTIFY THE FOLLOWING UTILITIES OR AGENCIES AT LEAST FIVE (5) WORKING DAYS BEFORE STARTING WORK SHOWN ON THESE PLANS.
  - STATE HIGHWAY ADMINISTRATION - 531-5533
  - BALTIMORE GAS AND ELECTRIC COMPANY UNDERGROUND ELECTRIC AND GAS DISTRIBUTION-CUSTOMER SERVICE - 685-0123
  - DAMAGE CONTROL - 234-5621
  - "MISS UTILITY" - 1 - 559-0100
  - CHESAPEAKE & POTOMAC TELEPHONE COMPANY - 725-9976
  - AMERICAN TELEPHONE AND TELEGRAPH - CABLE LOCATION DIVISION - 393-3553
  - BUREAU OF UTILITIES HOWARD COUNTY - 992-2366
- TREES ARE TO BE PROTECTED FROM DAMAGE TO MAXIMUM EXTENT. TREES LOCATED WITHIN THE CONSTRUCTION STRIP ARE NOT TO BE REMOVED OR DAMAGED BY THE CONTRACTOR.
- CONTRACTOR SHALL REMOVE TREES, STUMPS AND ROOTS ALONG LINE OF EXCAVATION AS DIRECTED BY THE ENGINEER. PAYMENT FOR SUCH REMOVAL SHALL BE INCLUDED IN APPROPRIATE UNIT PRICES BID.
- PLACE REGULATION "MEN WORKING" AND WARNING SIGNS AS REQUIRED TO COMPLY WITH MARYLAND STATE HIGHWAY ADMINISTRATION MANUAL OF TRAFFIC CONTROL FOR HIGHWAY CONSTRUCTION AND MAINTENANCE OPERATIONS.
- ALL WATER MAINS TO BE C.I.P. OR D.I.P. UNLESS OTHERWISE NOTED.
- TOP OF ALL WATER MAINS SHALL HAVE A MINIMUM OF 3 1/2 FEET OF COVER UNLESS OTHERWISE NOTED.
- VALVES SHALL BE STRAPPED WHERE APPLICABLE.
- BLOCK ALL FITTINGS WITH CONCRETE.
- BURY LINE ELEVATIONS ON FIRE HYDRANTS SHALL BE SET TO THE ELEVATIONS SHOWN ON THE DRAWINGS. ALL FIRE HYDRANTS SHALL BE STRAPPED AND BUTTRESSED WITH CONCRETE IN ACCORDANCE WITH STANDARD DETAILS. SOIL AROUND THE FIRE HYDRANT TO BE COMPACTED IN ACCORDANCE WITH THE STANDARD SPECIFICATIONS.
- WATER HOUSE CONNECTIONS SHALL BE FOR AN INSIDE METER SETTING.
- THE CONTRACTOR SHALL NOT OPERATE ANY WATER MAIN VALVES ON THE EXISTING SYSTEM.

**BENCH MARKS**

W.R.#A. B.M.#R-2 Elev. 374.771  
Iron Bolt base light pole - Upper Level  
Parking 45'x30' from Entrance.

W.R.#A. B.M.#R-4 Elev. 374.569  
Square Cut base light pole .75' west of  
Intersection road circling mall and  
access drive to Lower Level Parking.

**PLAN**  
Scale: 1"=50'



**PROFILES**  
Scale: H: 1"=100'  
V: 1"=10'

Sediment Control Measures for this Contract will be implemented in accordance with Article 15 of the Standard Specifications and SDP 81-101

REVIEWED FOR HOWARD SOIL CONSERVATION DISTRICT AND MEETS TECHNICAL REQUIREMENT

*James M. Velton* 8-17-81  
SIGNATURE DATE  
U.S. SOIL CONSERVATION SERVICE

This Development Plan is approved for Soil Erosion and Sediment Control by the Howard County Conservation District.

APPROVED:  
*William J. Ryan* 8-17-81  
HOWARD SCD DATE

DEPARTMENT OF PUBLIC WORKS  
HOWARD COUNTY, MARYLAND

*John F. Newman* 8-24-81  
DIRECTOR OF PUBLIC WORKS - DATE

*Robert M. Bennett* 8-19-81  
CHIEF - BUREAU OF UTILITIES - DATE

*William E. Ray* 8-24-81  
CHIEF - BUREAU OF ENGINEERING - DATE

*William E. Ray* 8-24-81  
CHIEF - LAND DEVELOPMENT DIVISION - DATE

WHITMAN, REQUARDT AND ASSOCIATES  
ENGINEERS  
2315 ST. PAUL ST.  
BALTIMORE, MARYLAND

CONTRACT NO. 44-1006-D

PLAN & PROFILE OF  
WATER MAINS

COLUMBIA  
TOWN CENTER  
ELECTION DISTRICT GUILFORD NO. 5

DRAWING NO. 1 OF 1 AS SHOWN

SCALE: AS SHOWN

AS-BUILT - 3-29-91

FB# 6558  
AUGUST 14, 1981

1006/1 W