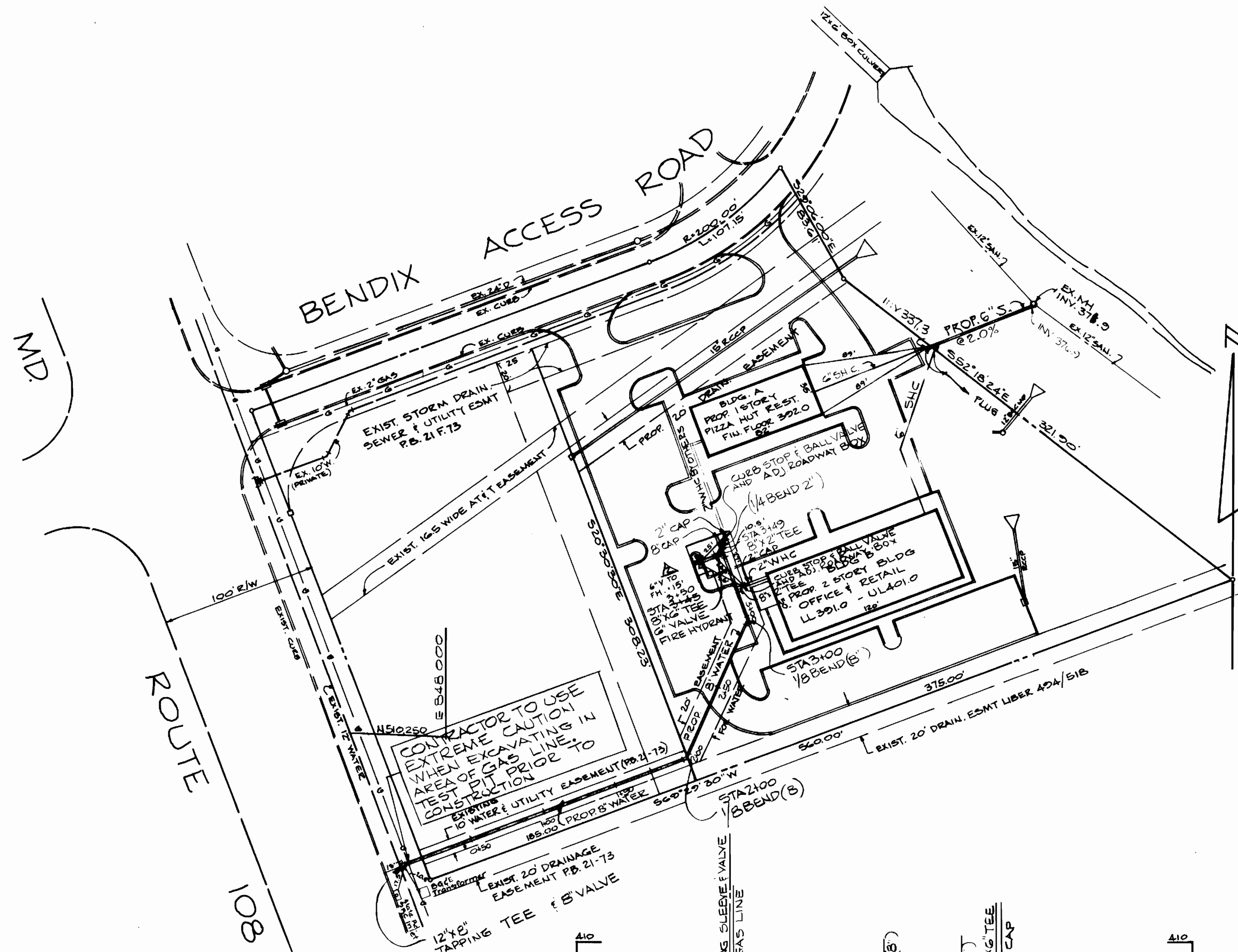


WR1A BM *10 ELEV. 379.43
 CUT N.E. CORNER CONCRETE HEADWALL
 NORTH SIDE ROUTE #108, PAINTED YELLOW
 WR1A BM *R-1 ELEV. 379.43
 POINT OF FLAGSTONE BRIDGE NORTH
 HEADWALL (NE WINGWALL) AT P.I. *G-3.

E 545.000
 N 510.750



CONTRACTOR TO USE
 EXTREME CAUTION
 WHEN EXCAVATING IN
 AREA OF GAS LINE.
 TEST PRIOR TO
 CONSTRUCTION
 TO WATER & UTILITY EASEMENT (P.B. 21-75)

NOTE
 SEDIMENT CONTROL MEASURES FOR
 THIS CONTRACT WILL BE IMPLEMENTED
 IN ACCORDANCE WITH ARTICLE 15 OF THE
 STANDARD SPECIFICATIONS AND SDP.#81-30

REVIEWED FOR HOWARD SOIL CONSERVATION
 DISTRICT AND MEETS TECHNICAL REQUIREMENTS

Signature 9-18-81
 SIGNATURE DATE
 U.S. SOIL CONSERVATION SERVICE

THIS DEVELOPMENT PLAN IS APPROVED FOR SOIL EROSION
 AND SEDIMENT CONTROL BY THE HOWARD COUNTY
 CONSERVATION DISTRICT.

APPROVED: *Signature* 9-18-81
 HOWARD S.C.D. DATE

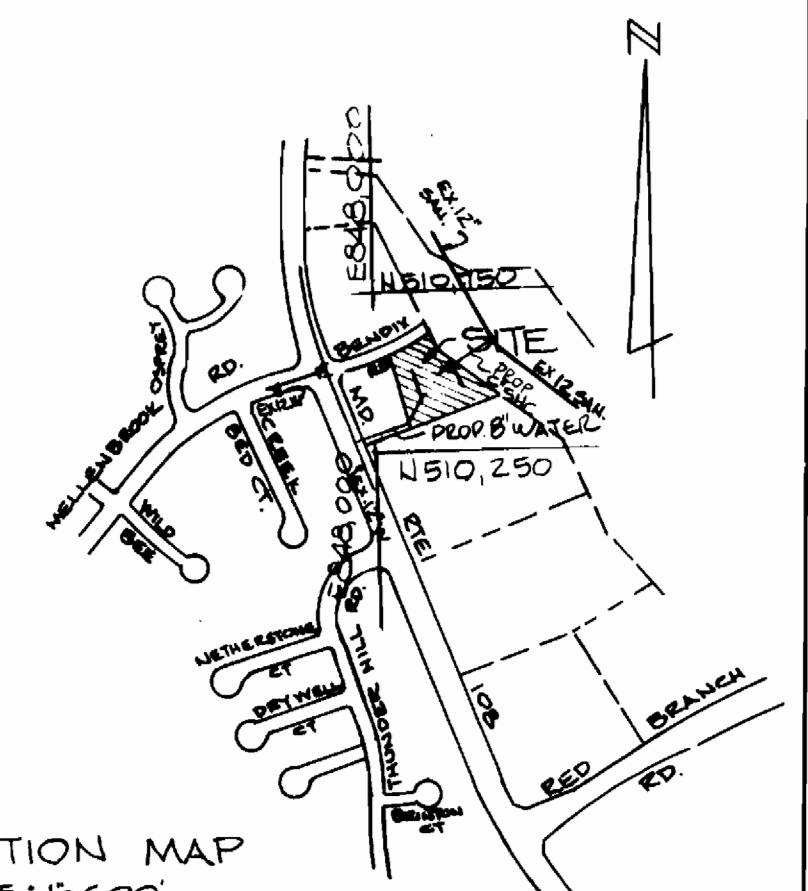
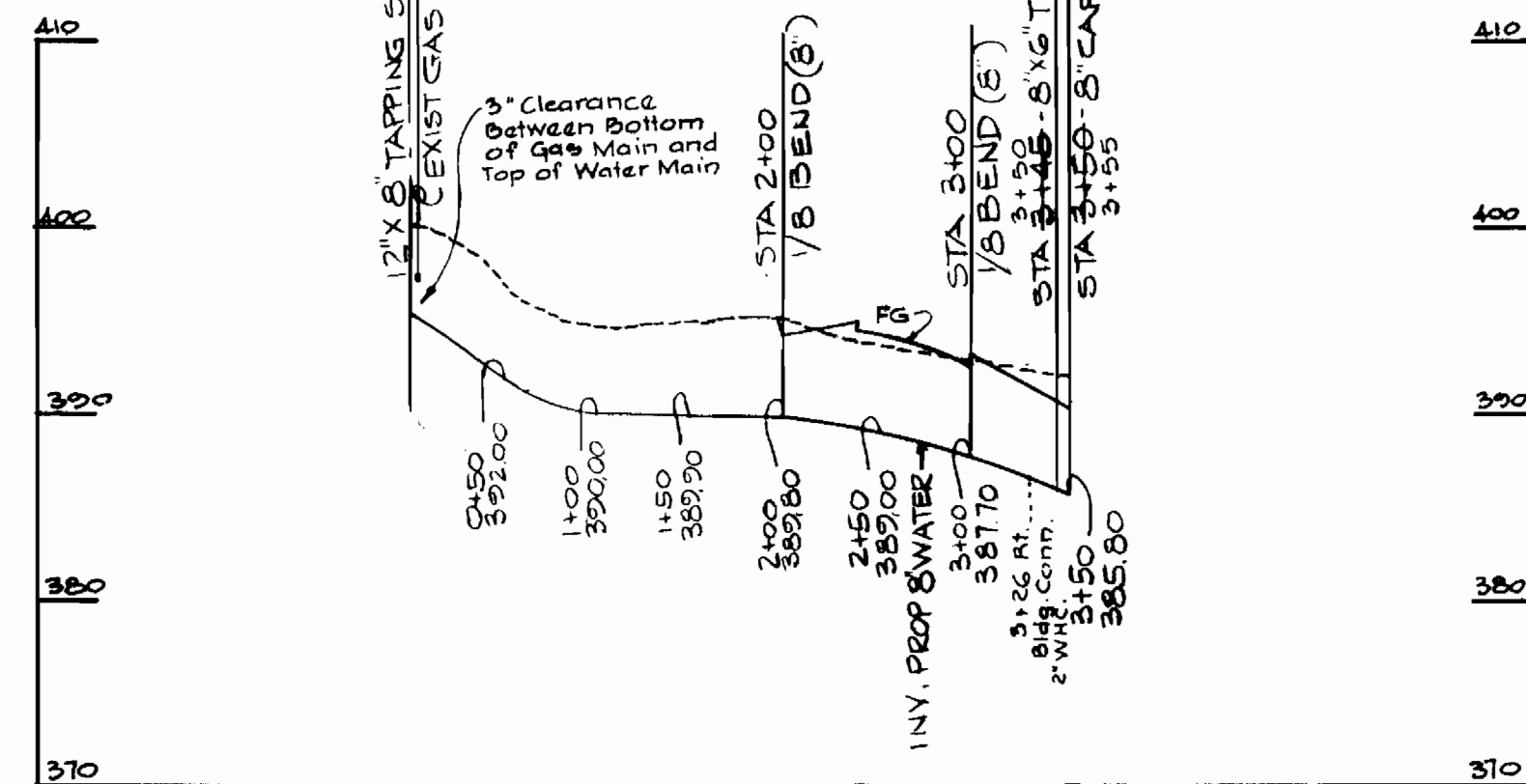
HUDKINS ASSOCIATES INC.
 ENGINEERS & LAND SURVEYORS
 101 SHELL BUILDING
 200 E. JOPPA RD. OWSON, MD. 21004

DEPARTMENT OF PUBLIC WORKS
 HOWARD COUNTY, MARYLAND
Signature 9-21-81 *Signature* 9/18/81
 DIRECTOR OF PUBLIC WORKS - DATE CHIEF - BUREAU OF ENGINEERING - DATE
Signature 9/18/81 *Signature* 9-18-81
 CHIEF - BUREAU OF UTILITIES - DATE CHIEF - LAND DEVELOPMENT DIVISION - DATE

CONTRACT NO.
 44-0998-D

PLAN & PROFILE OF
 WATER MAIN

QUANTITIES			
ITEM	ESTIMATED	AS-BUILT	SUPPLIER
8" WATER	350	355	Griffin/Class 52
6" WATER	16	16	Griffin/Class 52
FIRE HYDRANT	1	1	Dresser M&H
8" VALVE	1	1	Dresser
6" VALVE	1	1	Dresser
6" SEWER	73	73	Superior Clay VCPX
2" CAP	2	2	
8" CAP	1	1	Griffin/Class 250
8" TEE	2	2	Griffin/Class 250
2" CURB STOP	2	2	Ford B-44-777
8" TEE	1	1	Griffin/Class 250



LOCATION MAP
 SCALE: 1" = 600'
 WATER CODE FOR COUNTY USE
 WATER NO G04
 TYPE OF BUILDINGS - OFFICE, RETAIL & RESTAURANT
 NO OF LOTS - 1
 NO OF WATER HOUSE CONNECTIONS - 2

GENERAL NOTES

- APPROXIMATE LOCATION OF EXISTING MAINS ARE SHOWN. THE CONTRACTOR SHALL TAKE ALL NECESSARY PRECAUTIONS TO PROTECT EXISTING MAINS & SERVICES & MAINTAIN UNINTERRUPTED SUPPLY. ANY DAMAGE INCURRED SHALL BE REPAIRED IMMEDIATELY.
- ALL HORIZ. CONTROLS ARE BASED ON MARYLAND STATE COORDINATES.
- ALL VERT. CONTROLS ARE BASED ON U.S.G.S. DATUM.
- ALL PIPE ELEV'S SHOWN ARE INVERT ELEVATIONS.
- CLEAR ALL UTILITIES BY A MIN OF 6'. CLEAR ALL POLES 2'-0" MIN. OR TUNNEL AS REQUIRED.
- FOR ALL STD. DETAILS SEE STANDARDS BOUND IN SPECIFICATIONS.
- CONTRACTORS SHALL NOTIFY THE FOLLOWING UTILITIES AND AGENCIES AT LEAST FIVE (5) DAYS BEFORE STARTING WORK ON THESE PLANS.
 CUSTOMER SERVICE 685-0123
 C & P TELEPHONE CO. 725-9966
 AMERICAN TELEPHONE & TELEGRAPH - CABLE LOCATION DIVISION 301-393-3553.
 BUREAU OF UTILITIES HOWARD COUNTY 992-2366
- CONTRACTOR SHALL LOCATE EXISTING UTILITIES IN ADVANCE OF CONSTRUCTION OPERATIONS IN THE VICINITY OF PROPOSED UTILITIES.
- CONTRACTOR SHALL REMOVE TREES, STUMPS & ROOTS ALONG LINE OF EXCAVATION AS DIRECTED BY THE ENGINEER. PAYMENT FOR SUCH REMOVAL SHALL BE INCLUDED IN THE UNIT PRICE. BID FOR EXCAVATION & BACKFILL FOR WATER MAINS.
- TREES ARE TO BE PROTECTED FROM DAMAGE TO MAXIMUM EXTENT. TREES LOCATED WITHIN THE CONSTRUCTION STRIP ARE NOT TO BE REMOVED OR DAMAGED BY THE CONTRACTOR.
- PLACE REGULATION "MEN WORKING" & WARNING SIGNS AS REQUIRED TO COMPLY WITH MD. STATE HIGHWAY ADMINISTRATION MANUAL OF TRAFFIC CONTROL FOR HIGHWAY CONSTRUCTION & MAINTENANCE OPERATIONS.
- ALL WATER MAINS TO BE C.I.P. OR D.I.P. UNLESS OTHERWISE NOTED.
- TOP OF ALL WATER MAINS TO HAVE 3/2" COVER UNLESS OTHERWISE NOTED.
- ALL VALVES SHALL BE STRAPPED TO TEES IN ACCORDANCE WITH STANDARD DETAILS.
- BLOCK ALL FITTINGS WITH CONCRETE. SEE STANDARDS BOUND IN SPECIFICATIONS.
- BURY LINE ELEVATIONS ON FIRE HYDRANT SHALL BE TO THE ELEVATIONS SHOWN ON THE DRAWINGS. ALL FIRE HYDRANTS SHALL BE STRAPPED & BUTTRESSED IN CONCRETE IN ACCORDANCE WITH THE STANDARD DETAILS. SOIL AROUND THE FIRE HYDRANTS TO BE COMPACTED IN ACCORDANCE WITH SECTION 5-15 OF THE STD. SPECS.
- ALL WATER HOUSE CONNECTIONS SHALL BE METER SETTING FOR INSIDE.
- THE CONTRACTOR SHALL NOT OPERATE ANY WATER MAIN VALVES ON THE EXISTING SYSTEM.

REVISION 12-7-81
 REVISED LAYOUT OF WATER NEAR F.H.
 REVISED GRADES ON 6" SEWER HOUSE CONNECTION
 REVISION DATE

11/30/81
 OAKLAND RIDGE INDUSTRIAL PARK
 LOT 80 SECTION 3-C

LOT 80 SECTION 3
 OAKLAND RIDGE INDUSTRIAL PARK
 ELECTION DISTRICT 2
 HOWARD COUNTY MD.

DRAWING NO. 1 OF 1
 SCALE: PLAN: 1" = 60' PROFILE: 1" = 10' JOB: G123
 DATE: NOV. 18, 1980