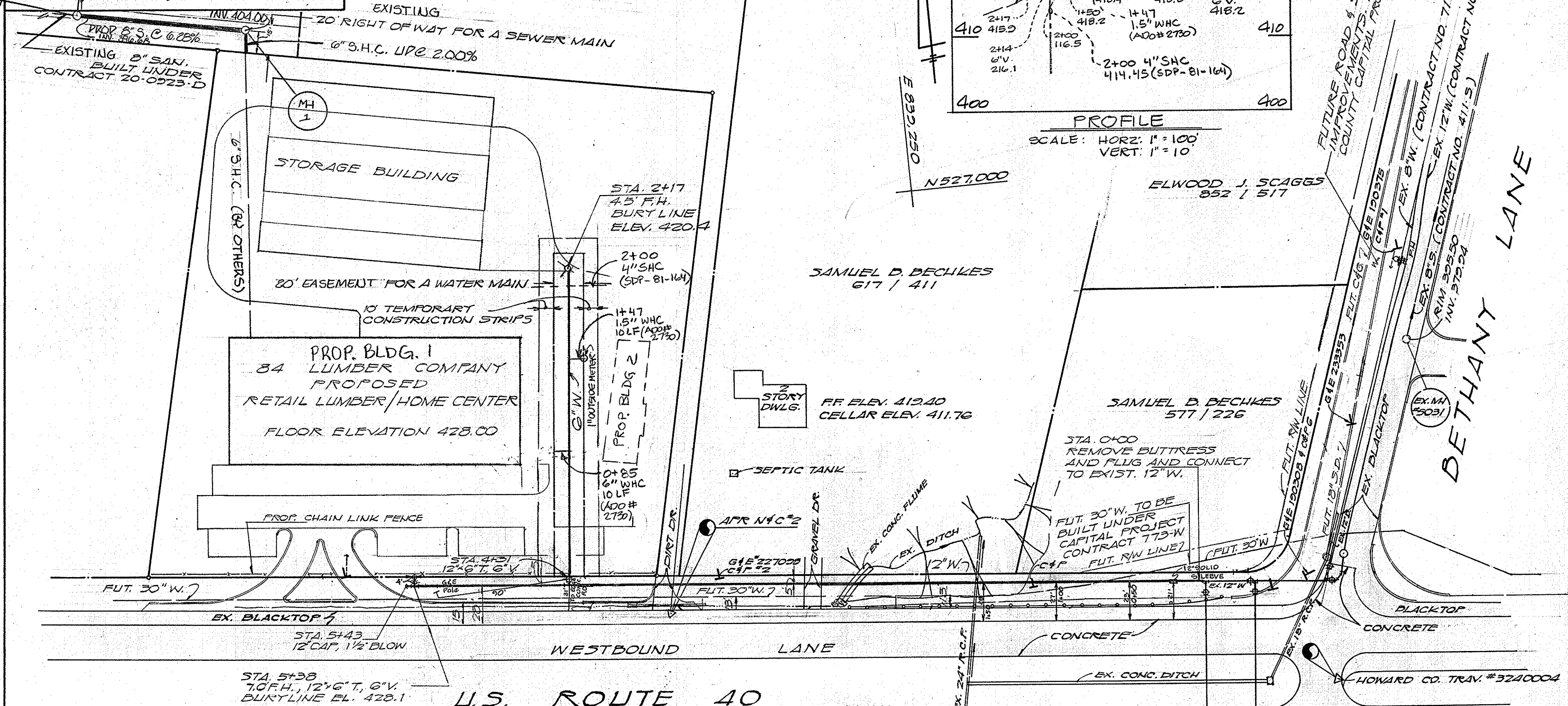
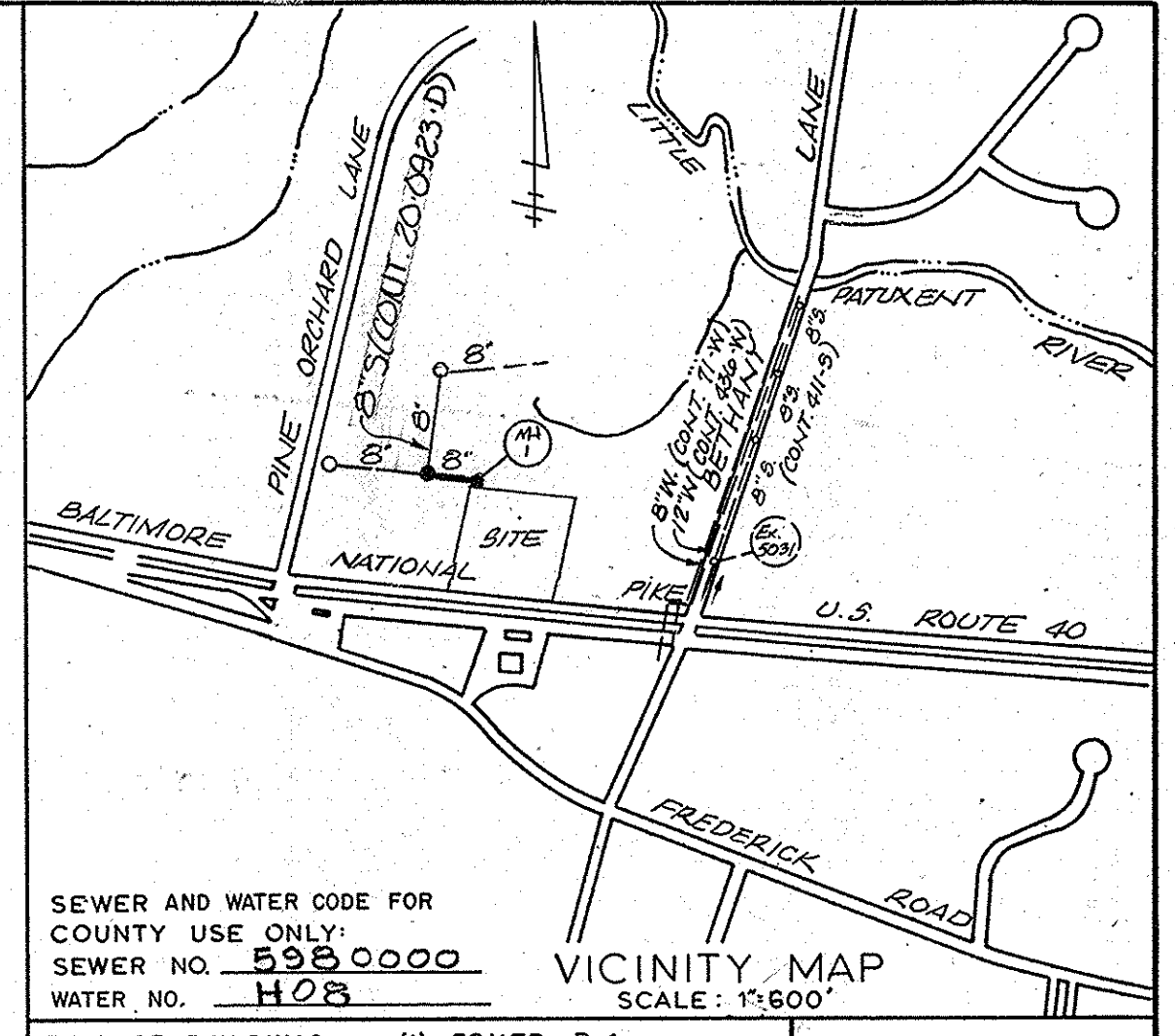
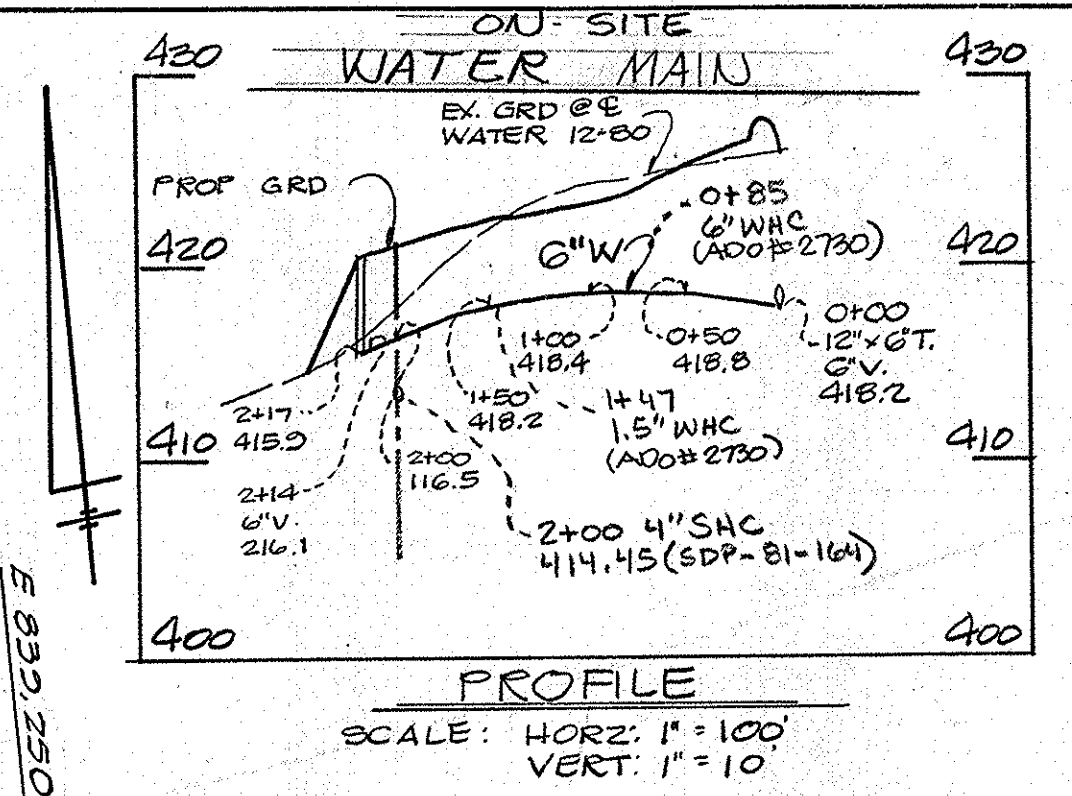


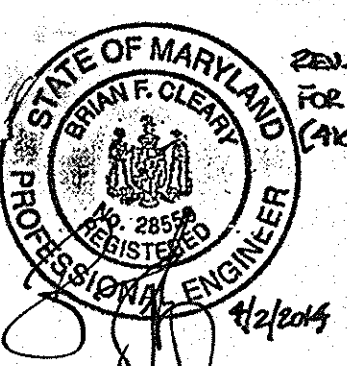
REVIEWED FOR HOWARD COUNTY SOIL CONSERVATION DISTRICT AND MEETS TECHNICAL REQUIREMENTS
 U.S. SOIL CONSERVATION SERVICE DATE 7-30-81
 THIS DEVELOPMENT PLAN IS APPROVED FOR EROSION AND SEDIMENT CONTROL BY THE HOWARD SOIL CONSERVATION DISTRICT.
 APPROVED DATE 7-30-81
 HOWARD SOIL CONSERVATION DISTRICT

SEDIMENT CONTROL MEASURES FOR THIS CONTRACT WILL BE IMPLEMENTED IN ACCORDANCE WITH ARTICLE 15 OF THE SPECIFICATIONS AND SITE DEVELOPMENT PLAN # SDP 81-164
 SAMUEL B. BECHLES
 617 / 400



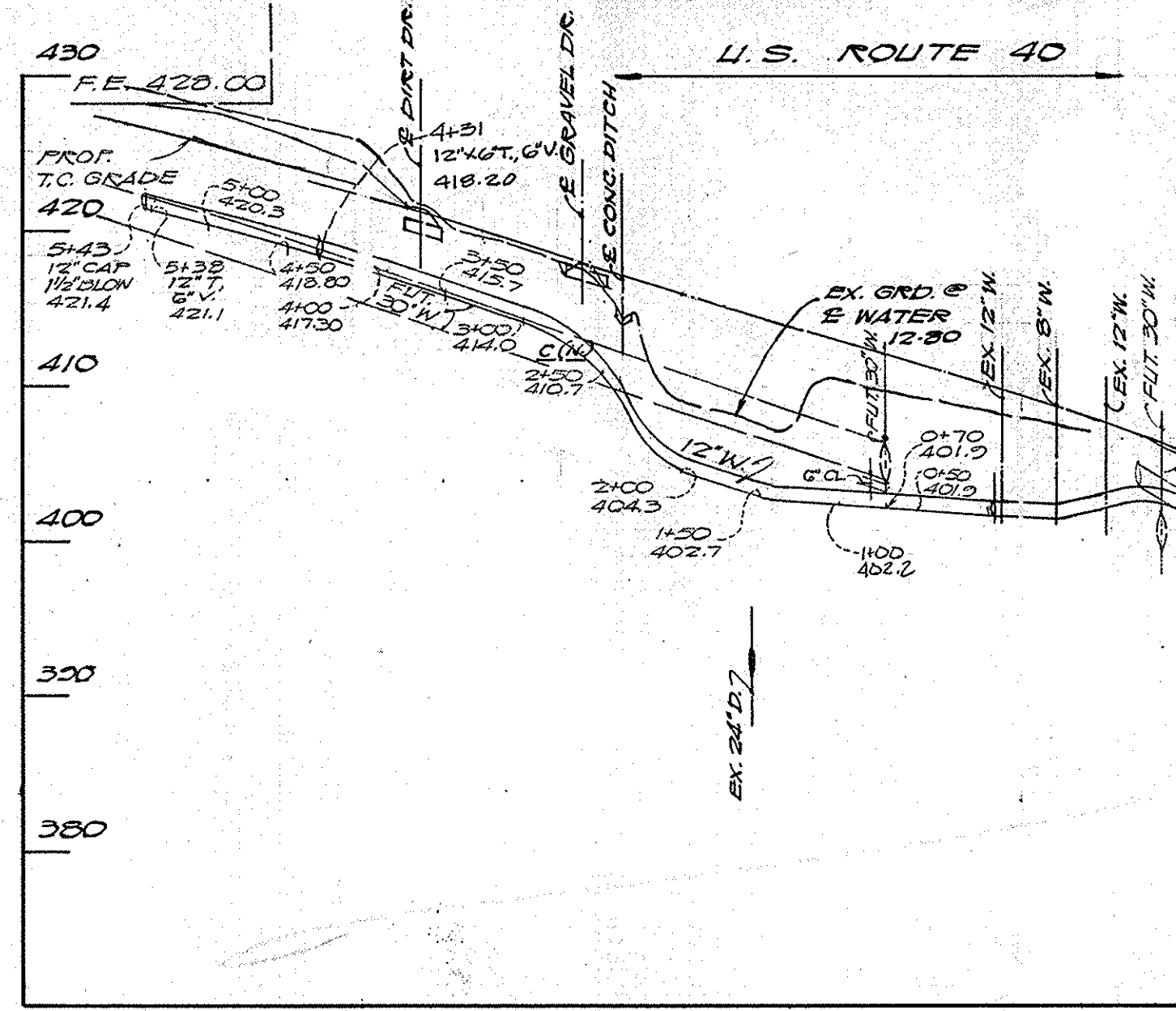
- ### GENERAL NOTES
- APPROXIMATE LOCATION OF EXISTING MAINS ARE SHOWN. THE CONTRACTOR SHALL TAKE ALL NECESSARY PRECAUTIONS TO PROTECT EXISTING MAINS AND SERVICES AND MAINTAIN UNINTERRUPTED SUPPLY. ANY DAMAGE INCURRED SHALL BE REPAIRED IMMEDIATELY TO THE SATISFACTION OF THE ENGINEER, AT THE CONTRACTOR'S EXPENSE.
 - ALL HORIZONTAL CONTROLS ARE BASED ON MARYLAND STATE COORDINATES.
 - ALL VERTICAL CONTROLS ARE BASED ON U.S.G.S. DATUM.
 - ALL PIPE ELEVATIONS SHOWN ARE INVERT ELEVATIONS.
 - CLEAR ALL UTILITIES BY A MINIMUM OF 6". CLEAR ALL POLES BY 2'-0" MINIMUM OR TUNNEL AS REQUIRED. ANY COST INCURRED TO THE CONTRACTOR FOR TUNNELING OR BRACING AT POLES SHALL BE INCLUDED IN UNIT PRICES BID FOR EXCAVATION AND BACKFILL.
 - FOR DETAILS NOT SHOWN ON THE DRAWINGS USE HOWARD COUNTY STANDARD DETAILS.
 - FOR MATERIALS AND CONSTRUCTION METHODS USE HOWARD COUNTY STANDARD SPECIFICATIONS.
 - CONTRACTOR SHALL LOCATE EXISTING UTILITIES A MINIMUM OF TWO (2) WEEKS IN ADVANCE OF CONSTRUCTION OPERATIONS IN THE VICINITY OF PROPOSED UTILITIES AT HIS OWN EXPENSE.
 - CONTRACTOR SHALL NOTIFY THE FOLLOWING UTILITIES OR AGENCIES AT LEAST FIVE (5) WORKING DAYS BEFORE STARTING WORK SHOWN ON THESE PLANS:
 - STATE HIGHWAY ADMINISTRATION - 531-5533
 - BALTIMORE GAS & ELECTRIC COMPANY - UNDERGROUND ELECTRIC DISTRIBUTION CUSTOMER SERVICE - 685-0123
 - BALTIMORE GAS & ELECTRIC COMPANY - UNDERGROUND GAS DISTRIBUTION CUSTOMER SERVICE - 685-0123
 - ENGINEERING - "DAMAGE CONTROL" - 234-5621
 - "MISS UTILITY" - 1-559-0100
 - CHESAPEAKE & POTOMAC (C&P) TELEPHONE COMPANY - 725-9976
 - AMERICAN TELEPHONE AND TELEGRAPH - CABLE LOCATION DIVISION - 393-3553
 - COLONIAL PIPELINE COMPANY - 781-4641
 - BUREAU OF UTILITIES HOWARD COUNTY - 992-2366
 - PLACE REGULATION "MEN WORKING" AND WARNING SIGNS AS REQUIRED TO COMPLY WITH MARYLAND STATE HIGHWAY ADMINISTRATION MANUAL OF TRAFFIC CONTROL FOR HIGHWAY CONSTRUCTION AND MAINTENANCE OPERATIONS.
 - ALL WATER MAINS TO BE C.I.P. OR D.I.P. UNLESS OTHERWISE NOTED.
 - TOP OF ALL WATER MAINS TO HAVE A MINIMUM OF 3-1/2' COVER UNLESS OTHERWISE NOTED.
 - VALVES ADJACENT TO TEES SHALL BE STRAPPED TO TEES.
 - BLOCK ALL FITTINGS WITH CONCRETE.
 - BURY LINE ELEVATIONS ON FIRE HYDRANTS SHALL BE SET TO THE ELEVATIONS SHOWN ON THE DRAWINGS. ALL FIRE HYDRANTS SHALL BE STRAPPED AND BUTTRESSED WITH CONCRETE IN ACCORDANCE WITH STANDARD DETAILS. SOIL AROUND THE FIRE HYDRANT TO BE COMPACTED IN ACCORDANCE WITH SECTION 5-15 OF THE STANDARD SPECIFICATIONS.
 - ALL WATER HOUSE CONNECTIONS SHALL BE FOR AN INSIDE METER SETTING.
 - THE CONTRACTOR SHALL NOT OPERATE ANY WATER MAIN VALVES ON THE EXISTING SYSTEM.
 - ALL SEWER MAINS SHALL BE C.S.P.X., V.C.P.X., OR A.C.P. CLASS 2400 UNLESS OTHERWISE NOTED.
 - THE CONTRACTOR SHALL PROVIDE A JOINT IN ALL SEWER MAINS WITHIN 2'-0" OF EXTERIOR MANHOLE WALL.
 - ALL MANHOLES SHALL BE 4'-0" INSIDE DIAMETER, UNLESS OTHERWISE NOTED.
 - WATER MAIN AND WATER HOUSE CONNECTION MUST BE PLACED SO AS TO HAVE AT LEAST ONE FOOT SEPARATION FROM THE SANITARY SEWER AS THEY PASS ABOVE IT.
 - THIS PLAN IS SUBJECT TO ADD # 2730 TO ADD A 6" W.H.C. TO BLDG. #1 AND A 1.5" W.H.C. TO BLDG. #2.

Professional Certification. I hereby certify that these documents were prepared or approved by me, and that I am a duly licensed professional engineer under the laws of the State of Maryland.
 License No. 28559 Expiration Date: 1/22/2015



| ITEM | EST'D | AS-BUILT | SUPPLIER |
|-------------|--------|----------|----------------------|
| 8" SEWER | 114 LF | 117 | Carlton/Delair |
| MANHOLES | 1 EA. | 1 EA. | Athletic Progress |
| 6" S.H.C. | 12 LF | 19 LF | Carlton |
| FIRE HYD. | 2 EA. | 2 EA. | Flow Ind. |
| 12" WATER | 543 LF | 543 LF | Griffin Pipe DIP |
| 6" WATER | 222 LF | 222 LF | Griffin Pipe DIP |
| 3/4" W.H.C. | 10 LF | 12 LF | K-type copper Delair |
| VALVES | 1 EA. | 1 EA. | Flow Ind. |

BENCH MARKS
 HOWARD CO. TRAV. # 3240004 ELEV. 406.25
 3/4" REBAR @ SURFACE IN MAC.
 SHOULDER @ EDGE OF CONCRETE
 APR N.C. #2 ELEV. 420.82
 NAIL AND CAP @ SURFACE IN MAC.
 SHOULDER 8' FROM EDGE OF CONCRETE



DEPARTMENT OF PUBLIC WORKS
 HOWARD COUNTY, MARYLAND
 DIRECTOR OF PUBLIC WORKS - DATE CHIEF-LAND DEVELOPMENT DIVISION-DATE
 CHIEF - BUREAU OF ENGINEERING DATE CHIEF - BUREAU OF UTILITIES-DATE

APR ASSOCIATES, INC.
 LAND SURVEYORS AND ENGINEERS
 7427 HARFORD ROAD
 BALTIMORE, MARYLAND 21234

CONTRACT NO. 24-0996-D
 PLAN & PROFILE
 SEWER & WATER MAINS

84 LUMBER COMPANY
 MAP 24 PARCEL 12
 ELECTION DISTRICT ELLICOTT CITY NO. 2
 DRAWING NO. 1 OF 1 SCALE AS SHOWN DES. W.K.W. DRAWN W.K.W. CHK. W.K.W.

SM 1/1966