

SEDIMENT CONTROL NOTES

1. FOR SEDIMENT CONTROL FOR THIS CONTRACT SEE THE APPROVED ROAD CONSTR. PLANS FOR FILE F-80-96.
2. MATERIAL FROM TRENCH EXCAVATION TO BE PLACED ON UPHILL SIDE OF TRENCH.
3. CONTRACTOR TO BACKFILL, COMPACT AND STABILIZE IMMEDIATELY AFTER INSTALLATION OF PIPE. NO TRENCHES WILL BE LEFT OPEN AT THE END OF EACH DAY, EXCEPT THAT PORTION WHERE WORK HAS STOPPED.
4. ANY SEDIMENT CONTROL FACILITIES ENCOUNTERED DURING PIPE CONSTRUCTION TO BE RETURNED TO ORIGINAL CONDITION IMMEDIATELY UPON COMPLETION OF THAT PORTION OF THE WORK.

VILLAGE OF KINGS CONTRIVANCE

SECTION 2, AREA 3, PHASE III, PART I

CONTRACT NO. 34-0987-D

DEPARTMENT OF PUBLIC WORKS HOWARD COUNTY, MARYLAND

GENERAL NOTES

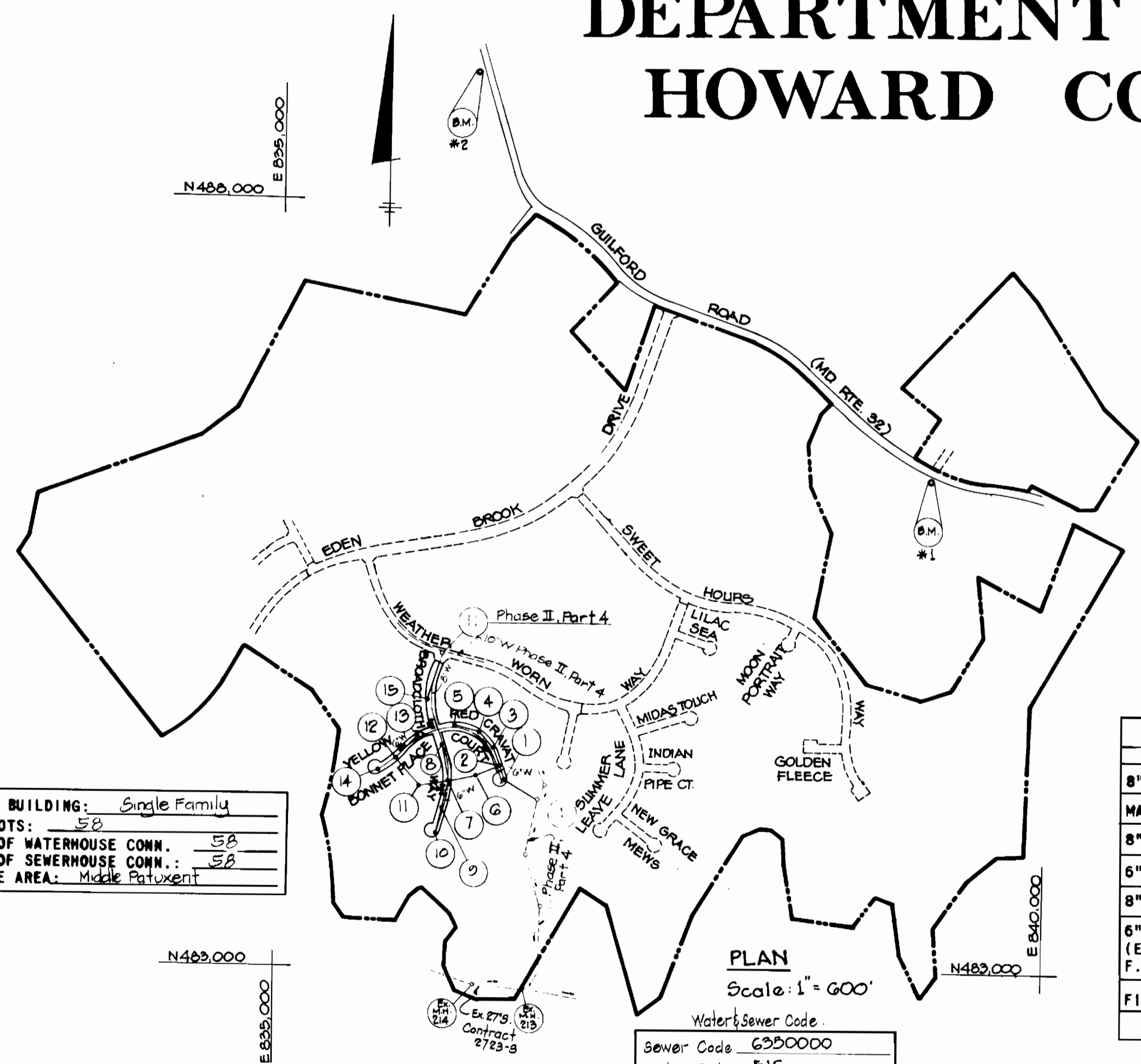
1. APPROXIMATE LOCATION OF EXISTING MAINS ARE SHOWN. THE CONTRACTOR SHALL TAKE ALL NECESSARY PRECAUTIONS TO PROTECT EXISTING SERVICES AND MAINTAIN UNINTERRUPTED SUPPLY. ANY DAMAGE INCURRED SHALL BE REPAIRED IMMEDIATELY.
2. ALL PIPE ELEVATIONS SHOWN ARE INVERT ELEVATIONS.
3. ALL WATER MAINS TO BE C.I.P. OR D.I.P. UNLESS OTHERWISE NOTED.
4. THE CONTRACTOR SHALL LOCATE EXISTING UTILITIES A MINIMUM OF TWO WEEKS IN ADVANCE OF CONSTRUCTION OPERATIONS IN VICINITY OF UTILITIES.
5. ALL WATER HOUSE CONNECTIONS SHALL BE FOR INSIDE METER SETTING.
6. FOR DETAILS NOT SHOWN ON THE DRAWINGS USE HOWARD COUNTY STANDARDS DETAILS.
7. THE CONTRACTOR SHALL PROVIDE A JOINT IN ALL GROUND MAINS WITHIN 2'-0" OF EXTERIOR MANDIBLE WALLS.
8. FOR MATERIALS AND CONSTRUCTION METHODS USE HOWARD COUNTY STANDARD SPECIFICATIONS.
9. ALL HORIZONTAL AND VERTICAL CONTROLS ARE BASED ON MARYLAND STATE DATUM.
10. PLACE REGULATION "MEN WORKING" AND WARNING SIGN AS REQUIRED TO COMPLY WITH MARYLAND STATE HIGHWAY ADMINISTRATION MANUAL OF TRAFFIC CONTROL FOR HIGHWAY CONSTRUCTION AND MAINTENANCE OPERATIONS.
11. ALL WATER MAINS TO HAVE A MINIMUM OF 3 1/2 COVER UNLESS OTHERWISE NOTED.
12. TREES ARE TO BE PROTECTED FROM DAMAGE TO MAXIMUM EXTENT. TREES LOCATED WITHIN THE CONSTRUCTION STRIP ARE NOT TO BE REMOVED OR DAMAGED BY THE CONTRACTOR.
13. CLEAR ALL UTILITIES BY A MINIMUM OF 12-INCHES.
14. ALL FIRE HYDRANTS SHALL BE STRAPPED TO TEES AND SHALL BE BUTTRESSED WITH CONCRETE IN ACCORDANCE WITH STANDARD DETAILS.
15. CONTRACTOR SHALL REMOVE TREES, STUMPS, AND ROOTS ALONG LINE OF EXCAVATION AS DIRECTED BY THE ENGINEER.
16. WHERE SEWER DEPTH EXCEEDS 12 FEET, USE CLASS 3000 A.C.P.
17. ALL SEWERS SHALL BE V.C.P.X., G.S.FX, P.V.C., OR A.C.P., CLASS 2400 UNLESS OTHERWISE NOTED.
18. ALL MANHOLES SHALL BE 4'-0" INSIDE DIAMETER UNLESS OTHERWISE NOTED.
19. PROFILE STATIONS SHALL BE ADJUSTED AS NECESSARY TO CONFORM TO PLAN DIMENSIONS.
20. BLOCK ALL FITTINGS WITH CONCRETE. SEE STANDARDS BOUND IN SPECIFICATIONS.
21. BURY LINE ELEVATIONS ON FIRE HYDRANTS SHALL BE SET TO THE ELEVATIONS SHOWN ON DRAWINGS.
22. ALL THE TWIN WATER HOUSE CONNECTIONS SHALL BE 1-INCH SIZE, SINGLE WATER HOUSE CONNECTIONS SHALL BE 3/4" COPPER PIPE.
23. CONTRACTOR SHOULD NOTIFY THE FOLLOWING UTILITIES OR AGENCIES AT LEAST FIVE (5) DAYS BEFORE STARTING WORK SHOWN ON THESE PLANS:
 CHESAPEAKE AND POTOMAC TELEPHONE CO. 726-9974
 BALTIMORE GAS AND ELECTRIC CO.
 -UNDERGROUND ELECTRIC DISTRIBUTION ENGR.,
 DAMAGE CONTROL 234-5681
 -UNDERGROUND GAS DISTRIBUTION ENGR. 550-0100
 BELL TELEPHONE SYSTEM 393-3040
 LONG DISTANCE CABLE DIVISION 393-3553
 BUREAU OF UTILITIES 992-2366
24. WATER MAIN AND WATER HOUSE CONNECTIONS MUST HAVE AT LEAST ONE FOOT SEPARATION FROM THE SEWER MAIN AND SEWER HOUSE CONNECTION AS THEY PASS ABOVE IT.

NOTES (Continued)

25. THE TOP ELEVATION OF ALL OUTFALL MANHOLES SHOULD BE SET A MINIMUM OF 18" ABOVE EXISTING GROUND AS SHOWN ON STANDARD DETAIL S-1.53.
26. ALL PVC PIPE IS TO BE INSTALLED IN ACCORDANCE WITH MANUFACTURER'S AND HOWARD COUNTY SPECIFICATIONS.

- * 1 BENCH MARK
 B.M. *2240001 Elev. +329.607
 Description
 Concrete Monument 16" dia of
 Edge Rd. N486100.300
 E 880811.300
- * 2 BENCH MARK
 B.M. *2340002-R Elev. +322.011
 Description
 R.D. 1.5' W. of W. Edge Rd.
 7' Below Surface N488800.177
 E 880802.852

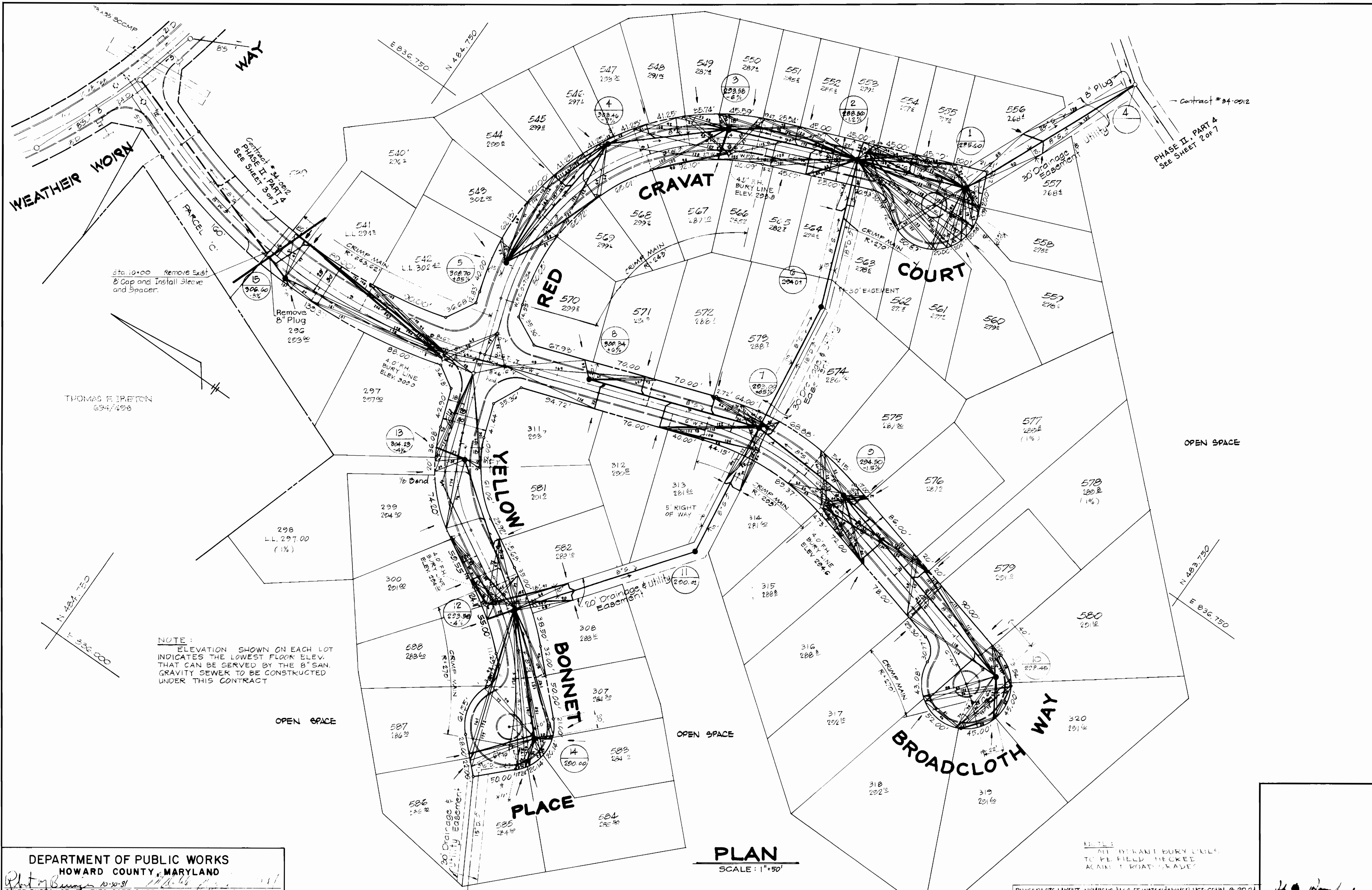
QUANTITIES				
ITEM	UNIT	ESTIMATED	AS-BUILT	MATERIAL/SUPPLIER
8" SEWER	L.F.	2438	2391.3	AMERICAN
MANHOLE	NO.	5	15	ATLANTIC
8" WATER	L.F.	426	288.0	D.I.P. GRIFFIN
6" WATER	L.F.	1230	1773.7	D.I.P. GRIFFIN
8" VALVE	NO.	-	-	-
6" VALVE (Excluding F.H. Valves)	NO.	3	3	M&H
FIRE HYDRANT	NO.	4	4	M&H



TYPE OF BUILDING: Single Family
 NO. OF LOTS: 58
 NUMBER OF WATERHOUSE CONN.: 58
 NUMBER OF SEWERHOUSE CONN.: 58
 DRAINAGE AREA: Middle Patuxent

PLAN
 Scale: 1" = 600'
 Water & Sewer Code:
 Sewer Code 6550000
 Water Code E1G

DEPARTMENT OF PUBLIC WORKS HOWARD COUNTY, MARYLAND Chief: Bureau of Utilities Date: 10-14-81	REVIEWED FOR HOWARD COUNTY CONSERVATION DISTRICT AND MEETS TECHNICAL REQUIREMENTS: Signature: [Signature] U.S. SOIL CONSERVATION SERVICE Date: 10-14-81	THIS DEVELOPMENT PLAN IS APPROVED FOR SOIL EROSION AND SEDIMENT CONTROL BY THE HOWARD COUNTY CONSERVATION DISTRICT. APPROVED: [Signature] HOWARD S.C.D. DATE: 10-14-81	SEDIMENT CONTROL MEASURES FOR THIS CONTRACT WILL BE IMPLEMENTED IN ACCORDANCE WITH SECTION 14 OF THE SPECIFICATIONS AND ROAD CONSTRUCTION PLAN F-81-89. REVISION: ADD SEWER & WATER CODE NEW FINAL PLAN NO. ON CONSTR. PLAN: 3-20-84
CENTURY ENGINEERING, INC. CONSULTING ENGINEERS - PLANNERS TOWSON, MARYLAND 21204	DEPARTMENT OF PUBLIC WORKS HOWARD COUNTY, MARYLAND Director of Public Works Date: 11-2-81	CONTRACT NO. 34-0987-D	PLAN OF WATER AND SEWER MAINS
VILLAGE OF KINGS CONTRIVANCE SECTION 2, AREA 3, PHASE III, PART I 6TH ELECTION DISTRICT, HOWARD COUNTY, MARYLAND		DRAWING NO. 1 OF 3	SCALE 1" = 50'



NOTE:
ELEVATION SHOWN ON EACH LOT INDICATES THE LOWEST FLOOR ELEV. THAT CAN BE SERVED BY THE 6" SAN. GRAVITY SEWER TO BE CONSTRUCTED UNDER THIS CONTRACT

PLAN
SCALE: 1"=50'

NOTE:
ALL EXISTANT BURY LINES TO BE FIELD CHECKED AGAINST ROAD MAPS

REVISED LOTS LAYOUT, NUMBERS & LOC. OF WATER & SEWER USE CONN. 2-20-84

DEPARTMENT OF PUBLIC WORKS
HOWARD COUNTY, MARYLAND
10-30-81
CHIEF BUREAU OF UTILITIES DATE CHIEF LAND DEVELOPMENT DIVISION DATE

CENTURY ENGINEERING, INC.
CONSULTING ENGINEERS - PLANNERS
TOWSON, MARYLAND 21204

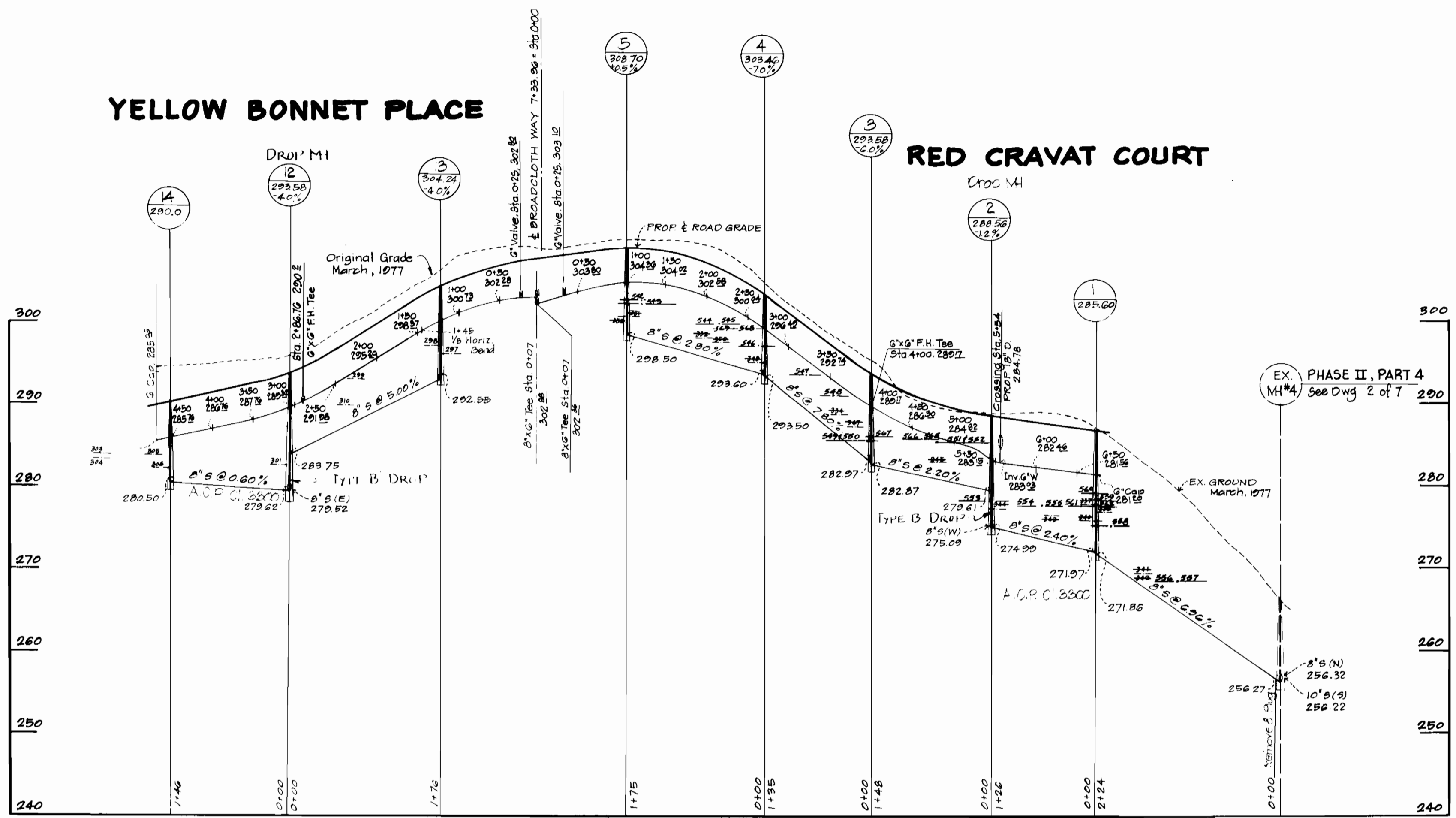
DEPARTMENT OF PUBLIC WORKS
HOWARD COUNTY, MARYLAND
11-2-81
DIRECTOR OF PUBLIC WORKS DATE CHIEF BUREAU OF ENGINEERING DATE

CONTRACT NO. **44-0987-10**

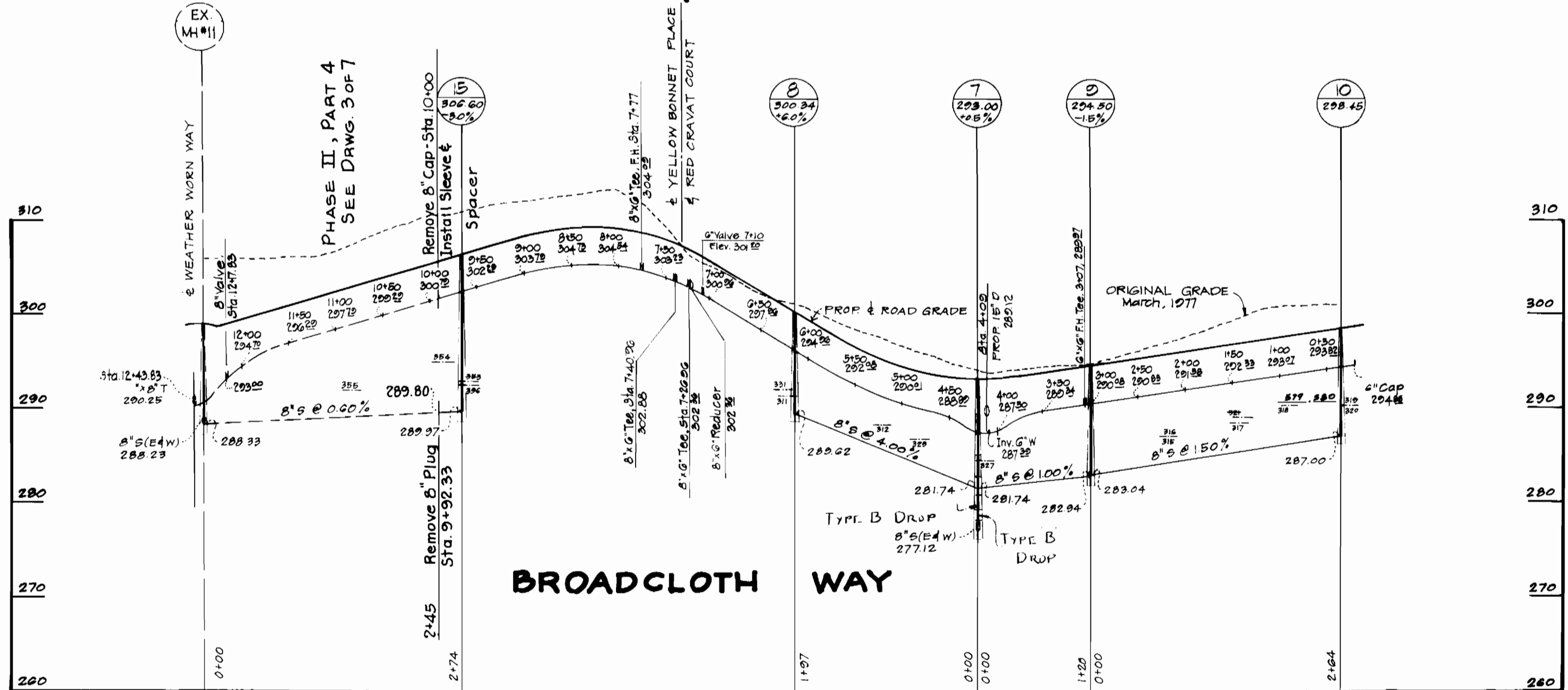
PLAN OF
WATER AND SEWER MAINS

VILLAGE OF KING'S CONTRIVANCE
SECTION 2 AREA 3, PHASE III, PART 1
6TH ELECTION DISTRICT, HOWARD COUNTY, MARYLAND

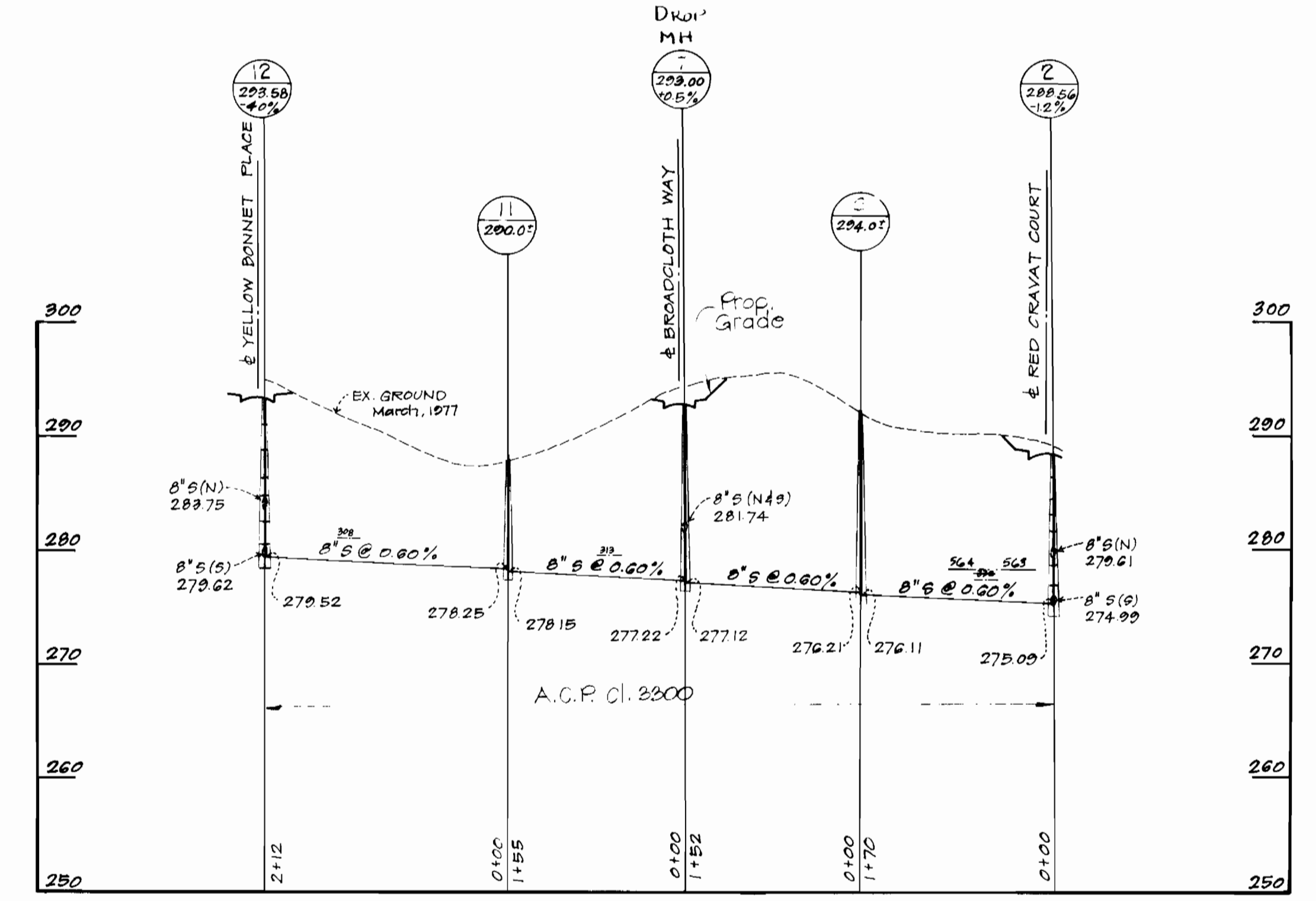
DRAWING NO. **2** OF **3**
SCALE 1"=50'



WATER & SEWER PROFILES



WATER & SEWER PROFILES



SEWER PROFILE

DEPARTMENT OF PUBLIC WORKS
 HOWARD COUNTY, MARYLAND
 Chief Bureau of Utilities DATE Chief - Land Development Division DATE

CENTURY ENGINEERING, INC.
 CONSULTING ENGINEERS - PLANNERS
 TOWSON, MARYLAND 21204

DEPARTMENT OF PUBLIC WORKS
 HOWARD COUNTY, MARYLAND
 Director of Public Works DATE Chief - Bureau of Engineering DATE

CONTRACT NO. 34-0987-D

WATER AND SEWER MAINS

VILLAGE OF KING'S CONTRIVANCE
 SECTION 2, AREA 3, PHASE III, PART 1
 6th ELECTION DISTRICT, HOWARD COUNTY, MARYLAND

DRAWING NO. 3 OF 3
 SCALE HOR. 1"=100' VERT. 1"=10'

REVISION: CHANGE IN LOC. OF WATER & SEWER USE CONN. 2-20-84