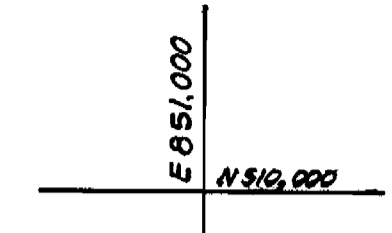
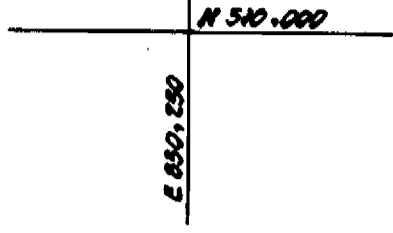
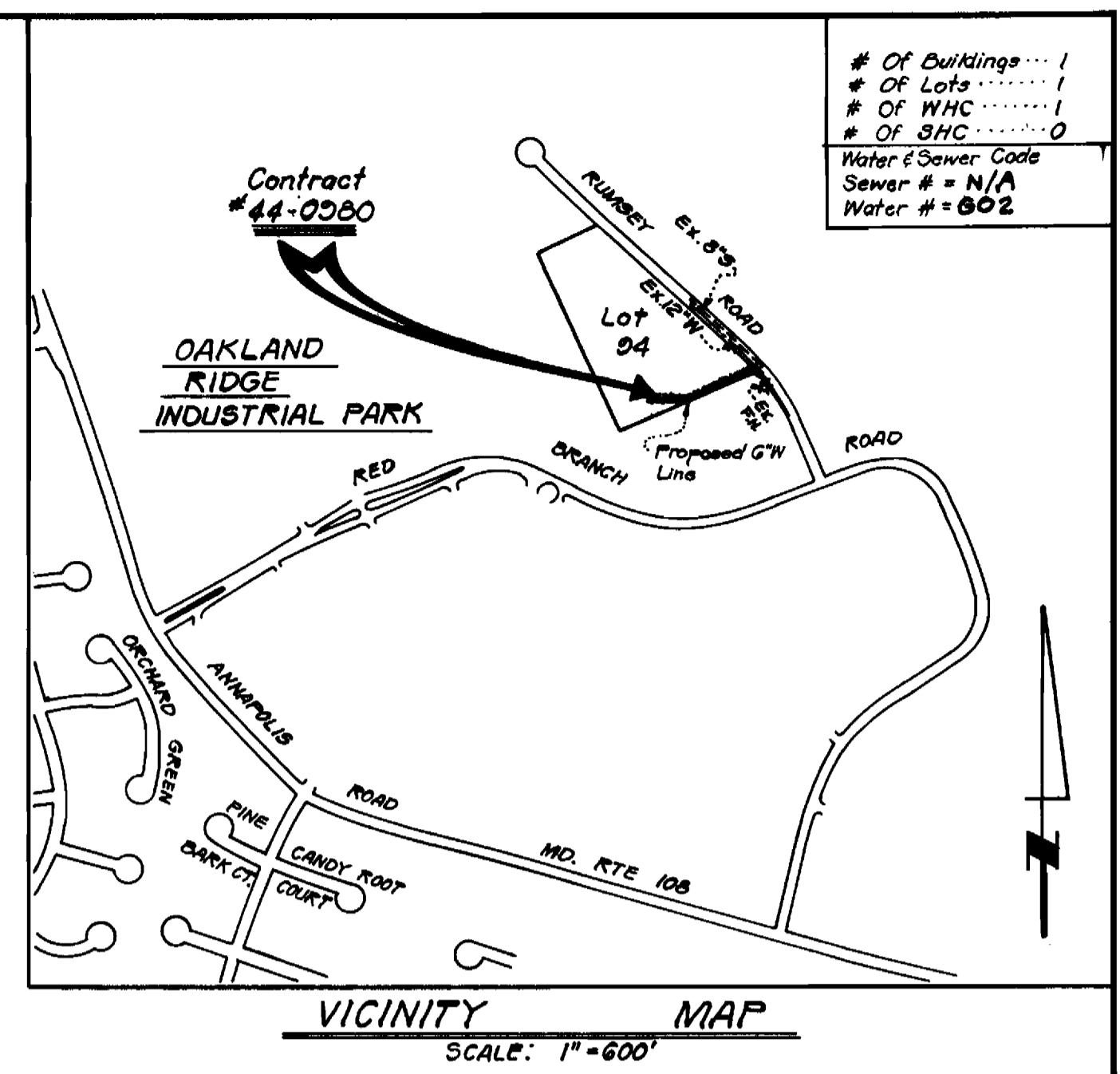


Plan View Scale: 1"=50'

OPEN SPACE
EQUESTRIAN CENTER
SECTION I P.B.15 F.G



QUANTITIES			
ITEM	BID	AS-BUILT	MATERIAL/SUPPLIER
6" Water	478 LF	477 LF.	US PIPE (FOUNDRY/A&P)
6" Valves	2	2	MUELLER/A&P
Fire Hydrants	1	1	AMERICAN DAWLING/A&P
4" WHC	52 LF	9 LF.	US PIPE (FOUNDRY/A&P)
6" x 4" R	1	1	MUELLER/A&P
4" 1/2 HB	1	-	-
6" 1/2 HB	1	1	MUELLER/A&P
6" 1/4 VB	4	4	MUELLER/A&P
Tapping Sleeve	1	1	ROCKWELL/A&P



SECTION TWO
OAKLAND RIDGE
INDUSTRIAL PARK

Sediment Control Measures For This Contract Will Be Implemented In Accordance With The Standard Specifications And SDP-81-39

REVIEWED FOR HOWARD SOIL CONSERVATION DISTRICT AND MEETS TECHNICAL REQUIREMENT.

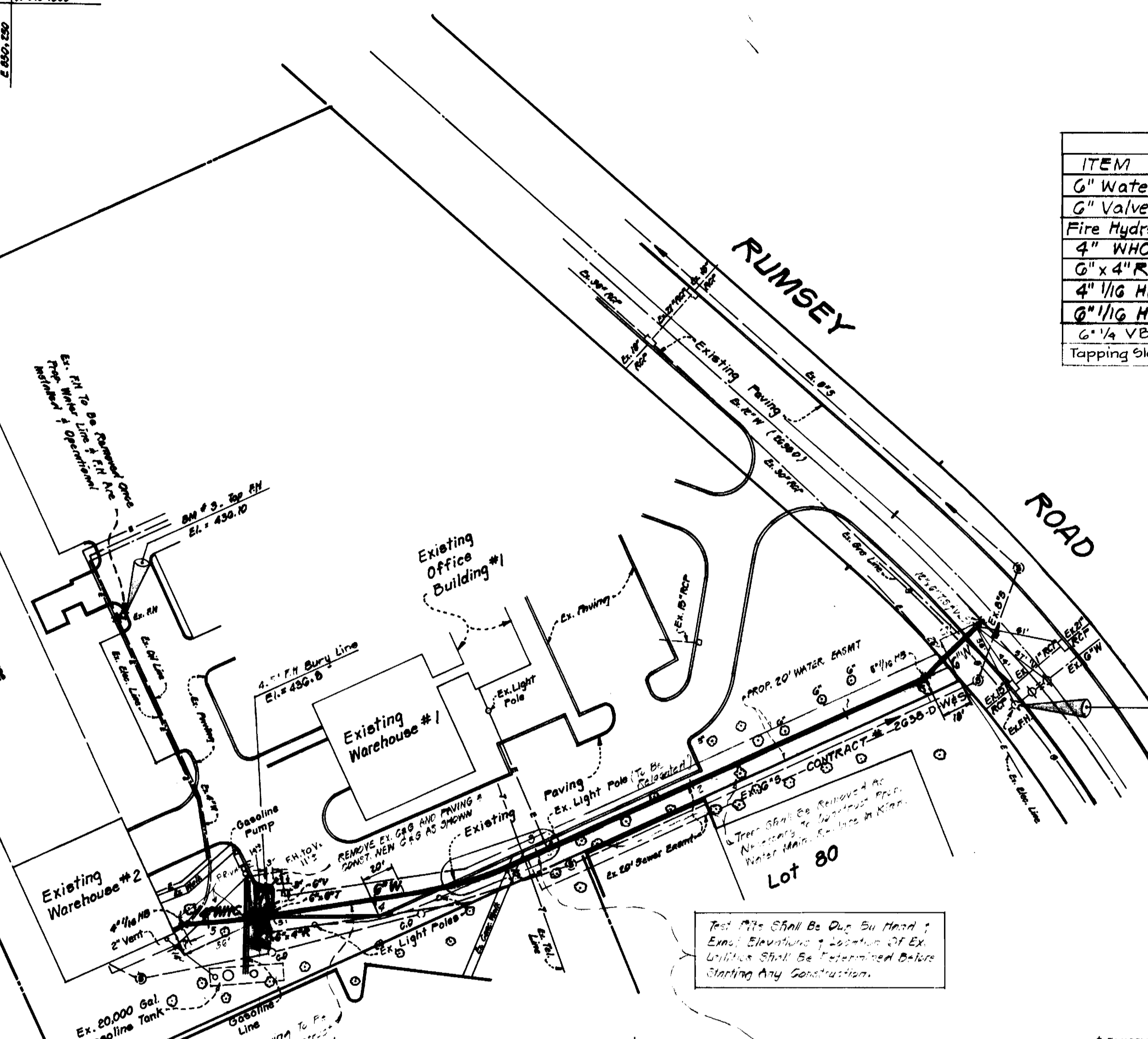
James M. Stahl
SIGNATURE DATE 7-2-81
U.S. SOIL CONSERVATION SERVICE

This Development Plan Is Approved For Soil Erosion And Sediment Control By The Howard Soil Conservation District.

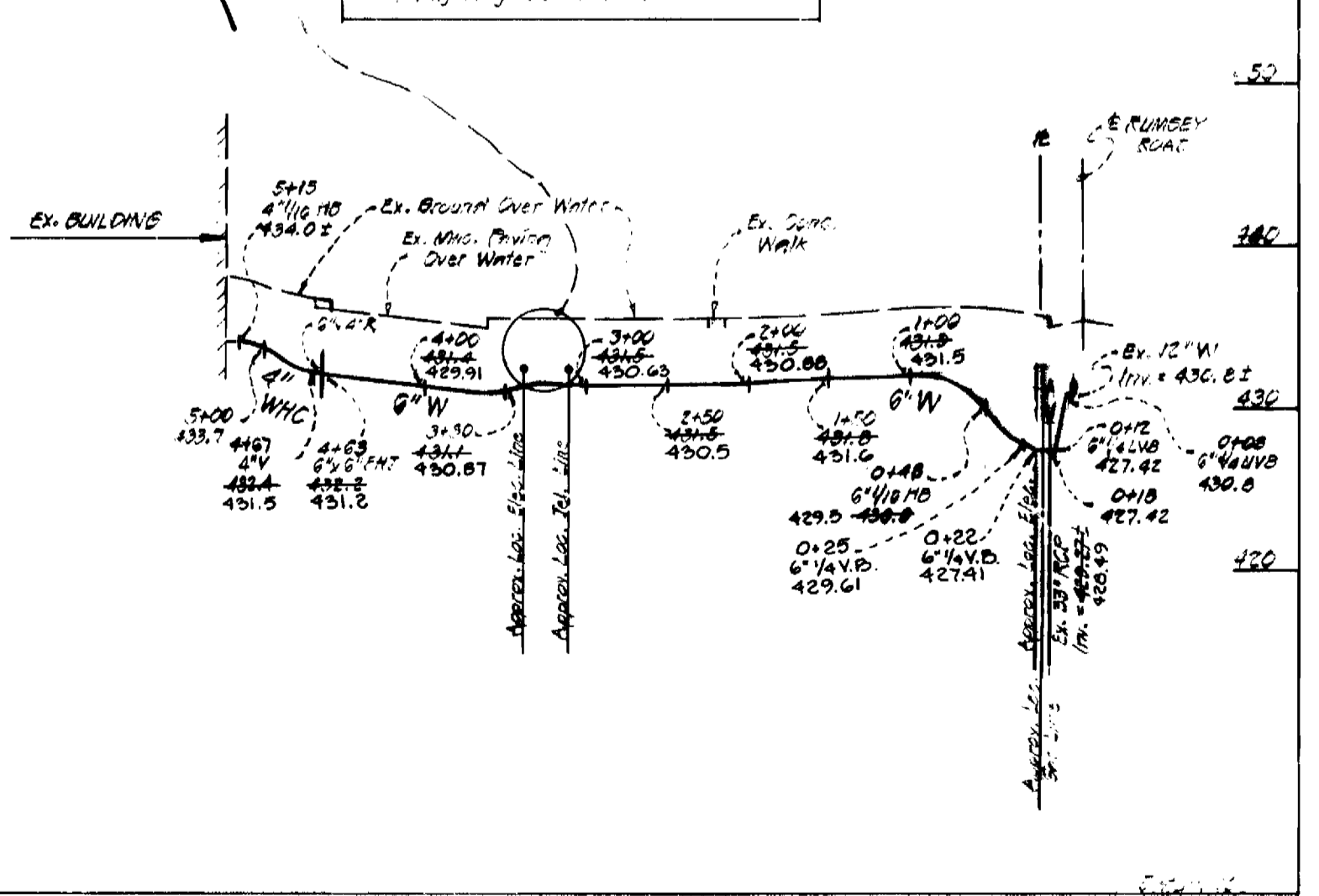
APPROVED:
William J. [Signature]
Howard S.C.D. Date 7-2-81

DEPARTMENT OF PUBLIC WORKS
HOWARD COUNTY, MARYLAND
Drayville M. Neuland
DIRECTOR OF PUBLIC WORKS DATE 7/7/81
R.L. [Signature]
CHIEF, BUREAU OF UTILITIES DATE 7-7-81

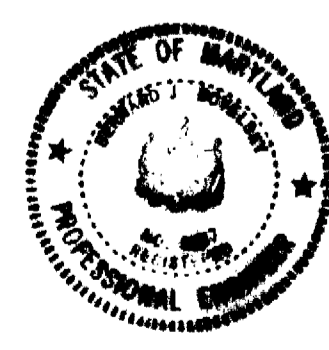
UNI-VERSAL ENGINEERING MANAGEMENT INC.
ENGINEERS PLANNERS SURVEYORS
11141 GEORGIA AVENUE, SUITE 418 WHEATON, MARYLAND
TEL. (301) 942-6966 20902



Test Pits Shall Be Done By Hand & Exact Elevations & Location Of Ex. Utilities Shall Be Determined Before Starting Any Construction.



- GENERAL NOTES**
- Approximate Location Of Existing Mains Are Shown. The Contractor Shall Take All Necessary Precautions To Protect Existing Mains And Services And Maintain Uninterrupted Supply. Any Damage Incurred Shall Be Repaired Immediately To The Satisfaction Of The Inspector, At The Contractor's Expense. Inverts For The Existing 12" Water & 6" Sewer Main Were Unattainable From Records Test Pits Shall Be Hand Dug And The Exact Elevations Of The Utilities Determined Before Any Construction may Proceed. If A Conflict Does Arise With The Proposed Construction Notify This Office. Any Damage To A Utility Shall Be Repaired Immediately To The Satisfaction Of The Utility's Owner, At The Contractor's Expense.
 - This Plan And The Coordinates Shown Thereon Are Based Upon Traversed Controls For Columbia Established By Maps, Inc. In 1965 And By Purdum & Jeschke In 1968, Which Controls Were Tied To Maryland Bureau Of Control Surveys Monuments And To U.S. Coast & Geodetic Survey Monuments In The Columbia Area. B.M. = Monument Red Branch # 108 # 2842001 Elev. = 445.60
 - All Pipe Elevations Shown Are Invert Elevations.
 - Clear All Utilities By A Minimum Of 6' Clear All Poles By 2'-0" Minimum Or Tunnel As Required. Any Cost Incurred To The Contractor For Tunneling Or Bracing At Poles Shall Be Included In Unit Prices Bid For Excavation And Backfill.
 - For Details Not Shown On The Drawings Use Howard County Standard Details.
 - For Materials And Construction Methods Use Howard County Standard Specifications.
 - Contractor Shall Locate Existing Utilities A Minimum Of Two (2) Weeks In Advance Of Construction Operations In The Vicinity Of Proposed Utilities At His Own Expense.
 - Contractor Shall Notify The Following Utilities Or Agencies At Least Five (5) Working Days Before Starting Work Shown On These Plans.
Baltimore Gas & Electric Company - Underground Electric Distribution Customer Service - 685-0123
Baltimore Gas & Electric Company - Underground Gas Distribution Customer Service - 685-0123
Chesapeake & Potomac (C&P) Telephone Company - 725-2976
Engineering - "Damage Control" - 294-5621 "Miss Utility" - 1-559-0100
American Telephone And Telegraph - Cable Location Division - 393-3553
Bureau Of Utilities Howard County - 992-2366
 - Trees Are To Be Protected From Damage To Maximum Extent. Trees Located Within The Construction Strip Are Not To Be Removed Or Damaged By The Contractor.
 - Contractor Shall Remove trees, Stumps And Roots Along line Of Excavation As Directed By The Inspector. Payment For Such Removal Shall Be Included In The Unit Price Bid For Excavation And Backfill.
 - Place Regulation "Men Working" And Warning Signs As Required To Comply With Maryland State Highway Administration Manual Of Traffic Control For Highway Construction And Maintenance Operations.
 - All Water Mains To Be C.I.P Or D.I.P Unless Otherwise Noted.
 - Top Of All Water Mains To Have A Minimum Of 3'-1/2' Cover Unless Otherwise Noted.
 - Valves adjacent to Trees Shall Be Strapped To Trees.
 - Block All Fittings With Concrete.
 - Bury Line Elevations On Fire Hydrants Shall Be Set To The Elevations Shown On The Drawings. All Fire Hydrants Shall Be Stopped And Buttressed With Concrete In Accordance With Standard Details. Soil Around The Fire Hydrant To Be Compacted In Accordance With Section 5-15 Of The Standard Specifications.



G. 44-0980-D
OAKLAND RIDGE INDUSTRIAL PARK
SECTION TWO
WRO ATOMIZER

CONTRACT NO. 44-0980-D

PLAN & PROFILES OF
F.H. & WATER MAINS

COLUMBIA
OAKLAND RIDGE INDUSTRIAL PARK
ELECTION DISTRICT - ELLICOTT CITY NO.2

DRAWING NO. OF	SCALE
1	As Shown