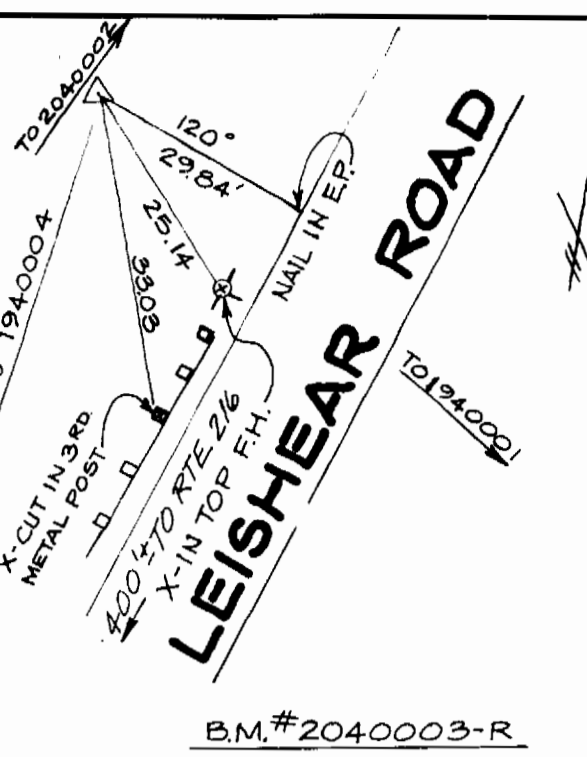


ITEM	NO.
SINGLE FAMILY DWELLING LOTS	73-66
SEWER HOUSE CONNECTIONS	73-66
WATER HOUSE CONNECTIONS	52-66
DRAINAGE AREA "LITTLE PATUXENT"	SAVAGE

### GENERAL NOTES

- APPROXIMATE LOCATIONS OF EXISTING MAINS ARE SHOWN. THE CONTRACTOR SHALL TAKE ALL NECESSARY PRECAUTIONS TO PROTECT THE EXISTING MAINS AND SERVICES, AND MAINTAIN UNINTERRUPTED SERVICE, ANY DAMAGE INCURRED SHALL BE REPAIRED IMMEDIATELY.
- ALL PIPE ELEVATIONS SHOWN ARE INVERT (I) ELEVATIONS.
- THE CONTRACTOR SHALL LOCATE EXISTING UTILITIES A MINIMUM OF 2 WEEKS IN ADVANCE OF CONSTRUCTION OPERATIONS IN VICINITY OF UTILITIES.
- FOR ALL STANDARD DETAILS, SEE "STANDARDS" BOUND IN SPECIFICATIONS.
- CLEAR ALL UTILITIES BY A MINIMUM OF 6', CLEAR ALL POLES BY A MINIMUM OF 2'-0" OR TUNNEL AS REQUIRED.
- ALL WATER MAINS SHALL BE C.I.P., D.I.P. OR ASBESTOS CEMENT UNLESS OTHERWISE NOTED AND HAVE A MINIMUM OF 3' COVER.
- BLOCK ALL FITTINGS WITH CONCRETE, SEE "STANDARDS" BOUND IN SPECIFICATIONS.
- BURY LINE ELEVATIONS ON FIRE HYDRANTS SHALL BE SET TO ELEVATIONS SHOWN ON DRAWINGS.
- ALL FIRE HYDRANTS SHALL BE STRAPPED AND BUTTRESSED IN ACCORDANCE WITH STANDARD DETAILS, SOIL AROUND FIRE HYDRANTS SHALL BE COMPACTED IN ACCORDANCE WITH SECTION 5-15 OF THE STD. SPECIFICATIONS.
- ALL VALVES SHALL BE STRAPPED TO TEES WHERE APPLICABLE IN ACCORDANCE WITH THE "STANDARDS" BOUND IN SPECIFICATIONS.
- COST OF STRAPPING FIRE HYDRANTS AND VALVES TO TEES TO BE INCLUDED IN THE UNIT PRICE BID FOR FURNISHING AND LAYING OF WATER MAIN.
- WATER SERVICES SHALL BE FOR INSIDE METER SETTING.
- ALL SEWER MAINS SHALL BE C.S.P., V.C.P. OR ASBESTOS CEMENT CLASS 2400 UNLESS OTHERWISE NOTED.
- ALL MANHOLES SHALL BE 4'-0" INSIDE DIAMETER.
- THE CONTRACTOR SHALL PROVIDE A JOINT IN ALL MAINS WITHIN 2'-0" OF EXTERIOR MANHOLE WALLS.
- MINIMUM CELLAR ELEVATIONS SHOWN ARE THE MINIMUM ELEVATIONS WHICH CAN BE SERVICED BY SEWER MAINS.
- ELEVATIONS ARE BASED UPON MARYLAND STATE DATUM. COORDINATE VALUES SHOWN ON DRAWINGS ARE IN THE MARYLAND STATE GRID SYSTEM.
- THE CONTRACTOR SHALL NOTIFY THE FOLLOWING UTILITIES OR AGENCIES AT LEAST (3) DAYS PRIOR TO STARTING WORK SHOWN ON THESE PLANS.
 

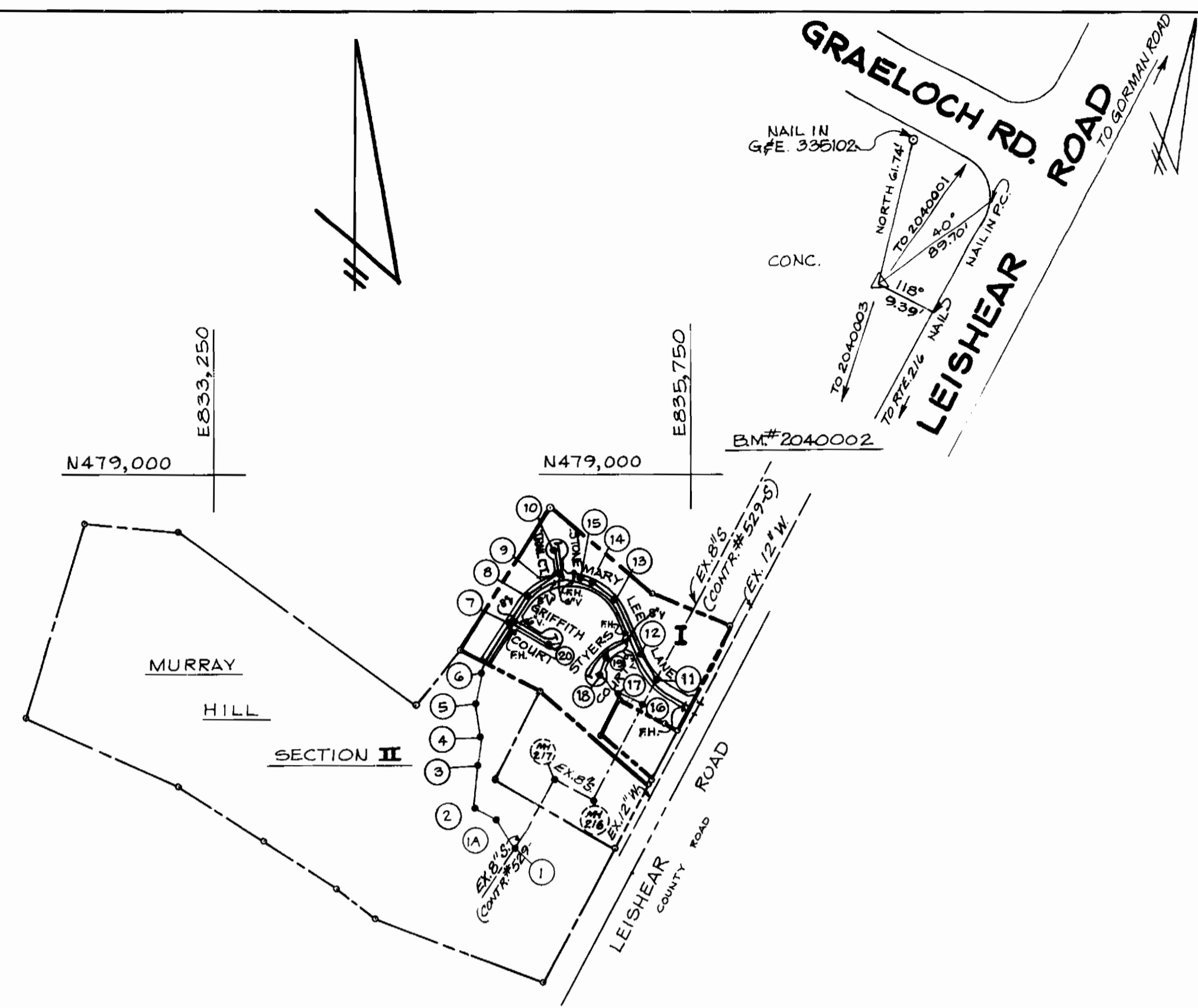
BALTIMORE GAS AND ELECTRIC COMPANY	
UNDERGROUND ELECTRIC	685-0123
BUREAU OF UTILITIES, HOWARD COUNTY	992-2366
C. AND P. TELEPHONE COMPANY	727-9976
MISS UTILITY	393-3648
- TWIN "WHC" SHALL BE COMPOSED OF 1" COPPER FROM THE CORPORATION TO THE "Y" BRANCH AND 5' OF 3/4" COPPER TO EACH CURB SERVICE BOX (SEE STANDARD W-50 BOUND IN SPECIFICATIONS). CURB STOPS TO BE SET 5' OFF THE PROPERTY CORNERS.
- THE CONTRACTOR SHALL NOT OPERATE ANY WATER MAIN VALVES ON THE EXISTING SYSTEM.
- THE WATER HOUSE CONNECTIONS SHALL PASS AT LEAST ONE FOOT (1') OVER SEWER MAINS. THE SEWER HOUSE CONNECTIONS SHALL PASS AT LEAST ONE FOOT (1') UNDER WATER MAINS, AND PROPER THREE AND ONE-HALF (3 1/2) FOOT COVER SHALL BE MAINTAINED AT ALL TIMES.



### BENCH MARKS

B.M. #2040003-R N479,000 E833,250  
 ELEV. 334.632 CONC. MON. 30' W OF W EDGE  
 OF LEISHEAR ROAD FLUSH WITH SURFACE.

B.M. #2040002 N478,398.113 E836,048.786  
 ELEV. 368.303 CONC. MON. FLUSH



WATER AND SEWER CODE	
SEWER	1
WATER	17

### LOCATION MAP

SCALE: 1" = 600'

# MURRAY HILL SECTION I HOWARD COUNTY, MARYLAND DEPARTMENT OF PUBLIC WORKS

QUANTITIES			
ITEM	ESTIMATED	AS BUILT	MATERIAL / SUPPLIER
8" SEWER	3,162 L.F.	3,075	V.C.P. / SUPERIOR
MANHOLES	21 MH <sup>s</sup>	21 MH <sup>s</sup>	C.P.A.
8" WATER	1,652 L.F.	1,653	GRIFFIN
6" WATER	754 L.F.	754	GRIFFIN
8" VALVES	3	3	M.H.
6" VALVES (EXCLUDES F.H. VALVES)	3	3	M.H.
FIRE HYD. W/6" V	3	3	M.H.
RELOCATED FIRE HYD.	1	1	EXIST.

SEDIMENT CONTROL MEASURES FOR THIS CONTRACT WILL BE IMPLEMENT IN ACCORDANCE WITH ARTICLE 15 OF THE STANDARD SPECIFICATIONS AND ROAD CONSTRUCTION PLAN F-81-92

REVIEWED FOR HOWARD CO. AND MEETS TECHNICAL REQUIREMENTS

*James M. Hehn* 7-14-81  
 U.S. SOIL CONSERVATION SERVICE DATE

THE DEVELOPMENT IS APPROVED SOIL EROSION AND SEDIMENT CONTROL BY THE HOWARD SOIL CONSERVATION DISTRICT.

*William J. Rowe* 11/81  
 SOIL CONSERVATION DISTRICT DATE

DEPARTMENT OF PUBLIC WORKS  
 HOWARD COUNTY, MARYLAND

*John E. Nunn* 7/31/81  
 DIRECTOR OF PUBLIC WORKS DATE

*Joseph J. Kelly* 7/31/81  
 CHIEF BUREAU OF ENGINEERS DATE

*Robert M. Burns* 7-30-81  
 CHIEF BUREAU OF UTILITIES DATE

*Joseph J. Kelly* 7/31/81  
 CHIEF LAND DEVELOPMENT DIVISION DATE

BOENDER ASSOCIATES, INC.  
 ENGINEERS, PLANNERS, SURVEYORS  
 BALTIMORE, MD. SALISBURY, MD.  
 465 7777 749 1288

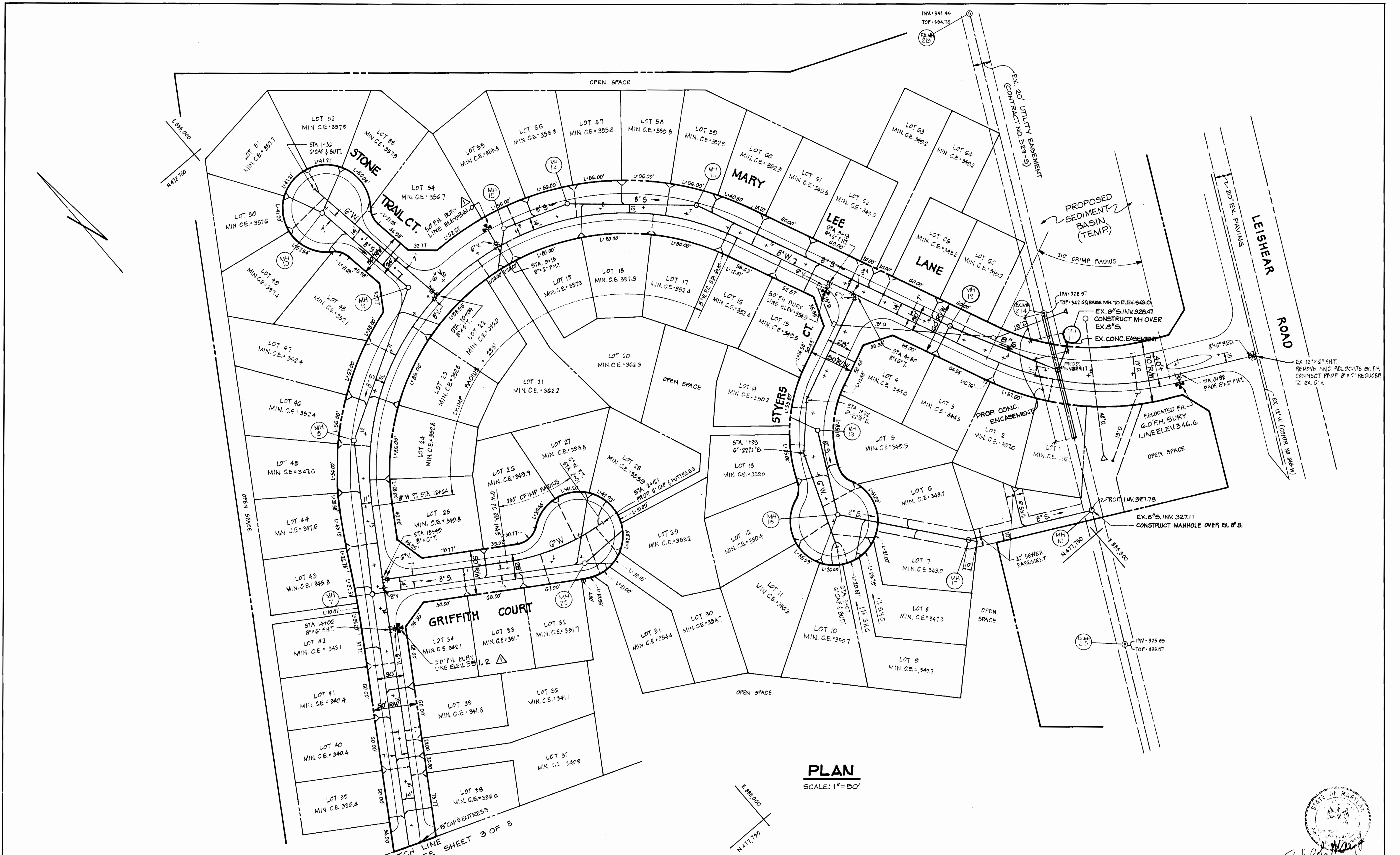
CONTRACT NO. 24-0978-D

TITLE SHEET

MURRAY HILL SECTION I  
 ELECTION DISTRICT NO. 6

DRAWING NO.  
 1 OF 5

SCALE AS SHOWN  
 Des: B.S.  
 Drw: B.S.  
 CHK: R.M.  
 JOB: 80034



**PLAN**  
SCALE: 1" = 50'



DEPARTMENT OF PUBLIC WORKS  
HOWARD COUNTY, MARYLAND

*Robert M. Reinger* 7-31-81  
DIRECTOR OF PUBLIC WORKS DATE

*Joseph Sealant* 7/31/81  
CHIEF BUREAU OF UTILITIES DATE

*James D. Ray* 7/31/81  
CHIEF BUREAU OF ENGINEERS DATE

*Joseph Sealant* 7/31/81  
CHIEF LAND DEVELOPMENT DIVISION DATE

BOENDER ASSOCIATES, INC.  
ENGINEERS, PLANNERS, SURVEYORS  
BALTIMORE, MD. 465-7777 SALISBURY, MD. 749-1288

CONTRACT NO. 24-0978-D

PLAN

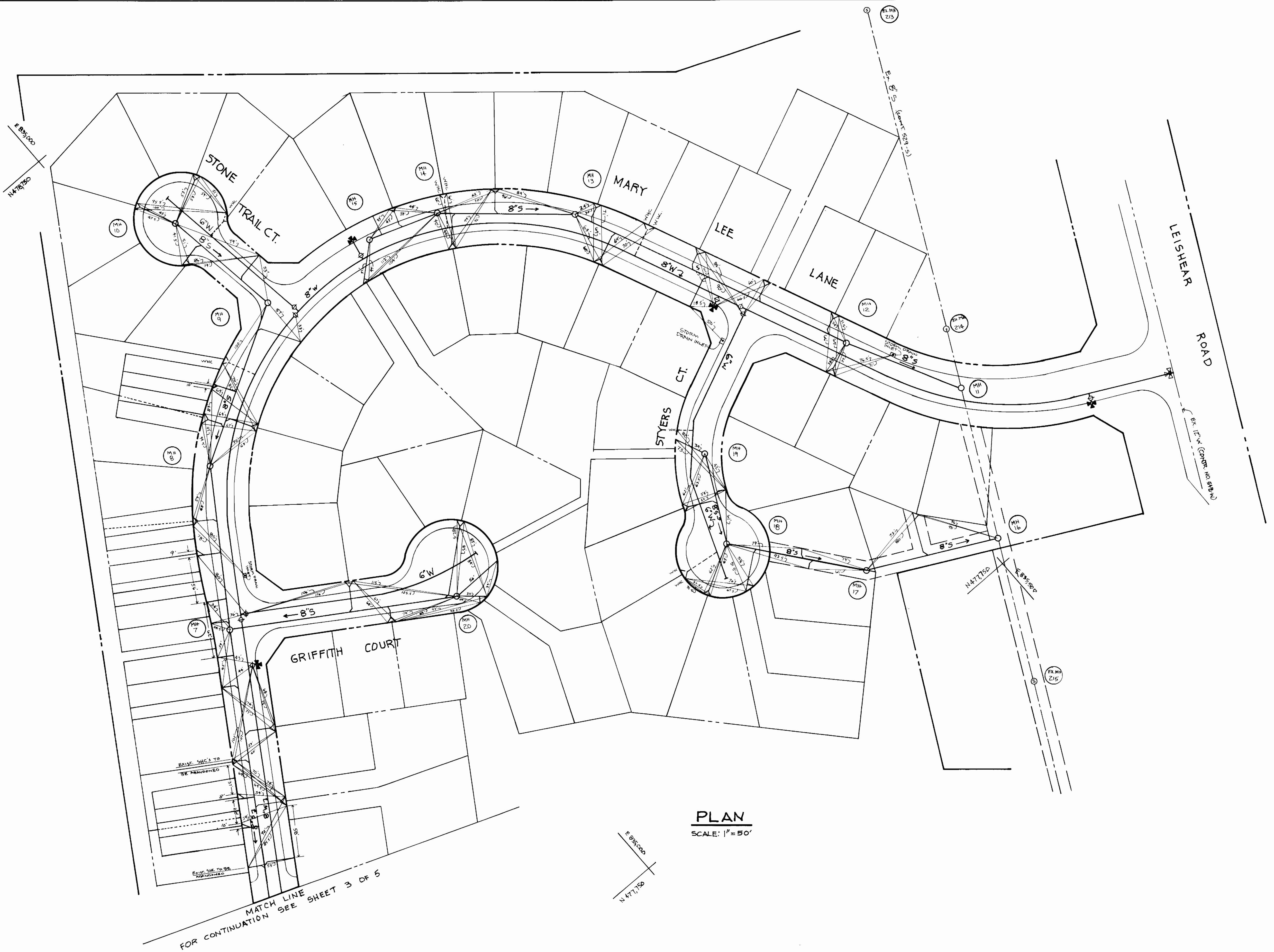
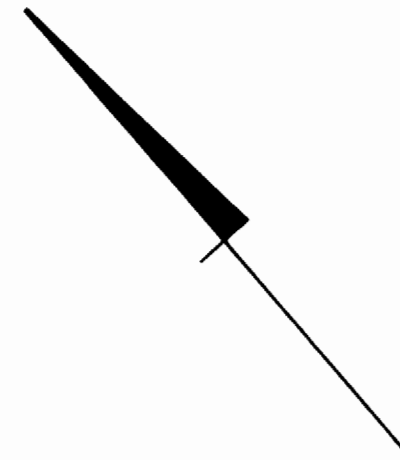
11-18-81 A.R.S., REV. BURY LINE ELEVATIONS AT F.H.

MURRAY HILL SECTION 1  
ELECTION DISTRICT NO. 6

DRAWING NO. 2 OF 5

SCALE AS SHOWN

Des. J. B.  
Dwn. J. B.  
Chk. R. M.  
Job: 80034



REVISED LOTS

**PLAN**  
SCALE: 1" = 50'

MATCH LINE  
FOR CONTINUATION SEE SHEET 3 OF 5

CONTRACT NO. 24-0978-D

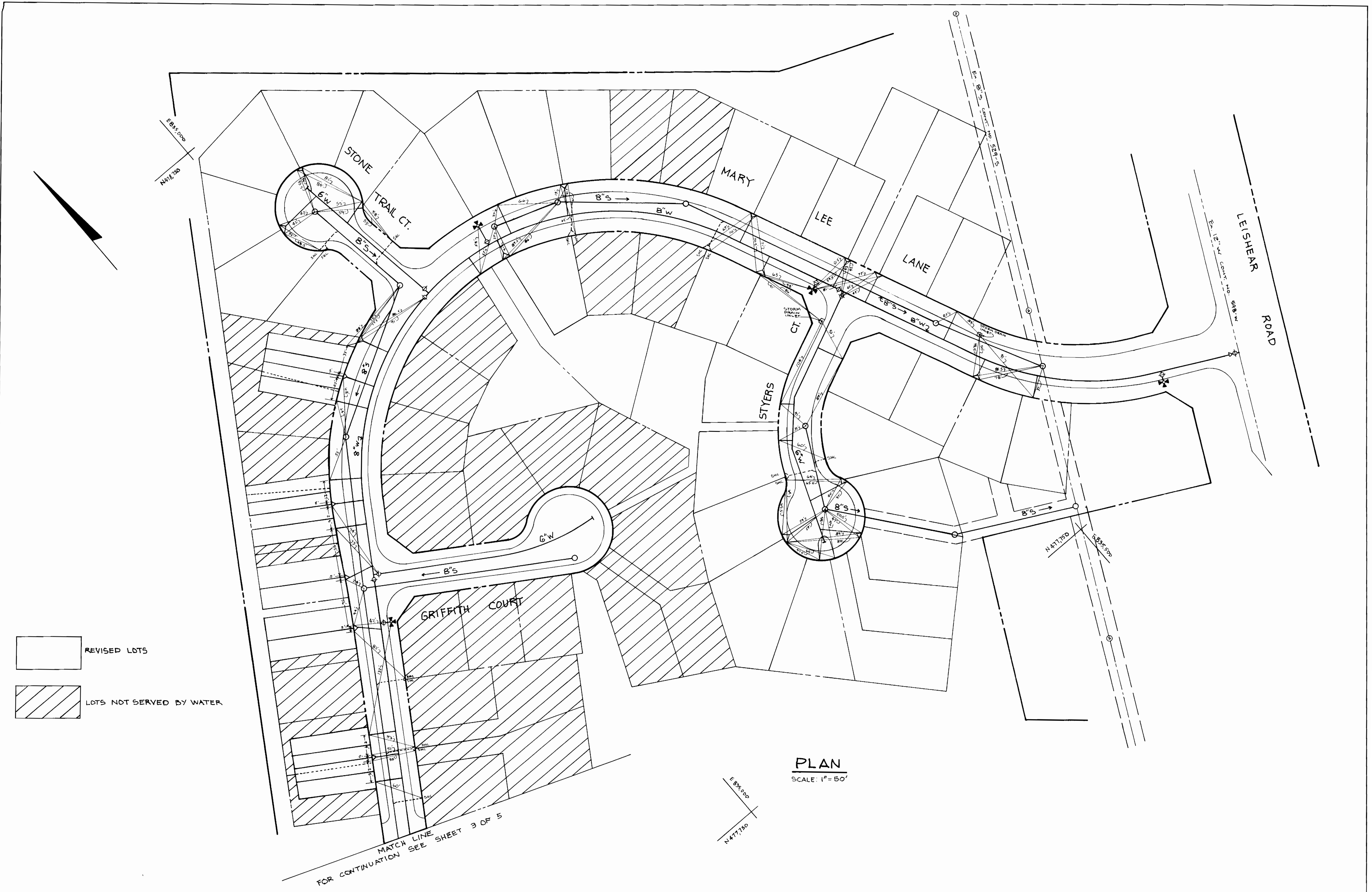
SEWER HOUSE CONNECTIONS  
AS-BUILT

MURRAY HILL SECTION 1  
ELECTION DISTRICT NO. 6

DRAWING NO.  
2A OF 5

SCALE  
AS  
SHOWN

AS-BUILT NOV 17, 1982

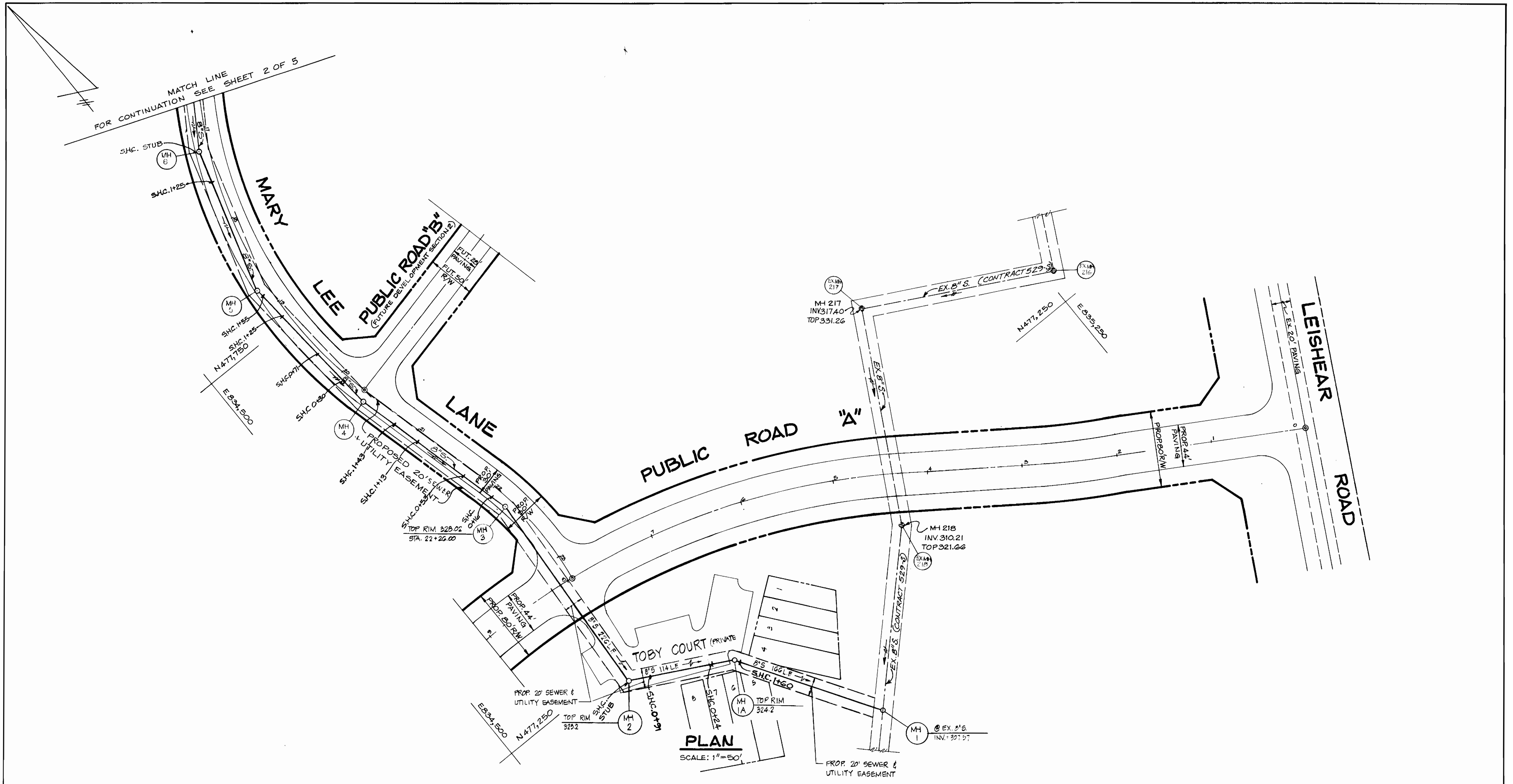


- REVISED LOTS
- LOTS NOT SERVED BY WATER

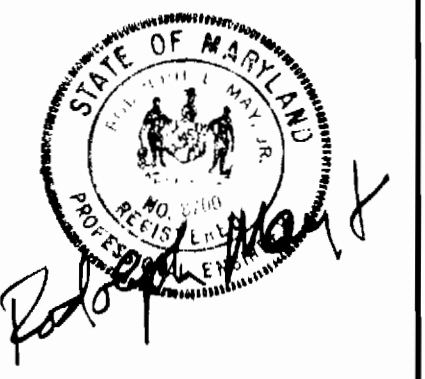
**PLAN**  
SCALE: 1" = 50'

MATCH LINE  
FOR CONTINUATION SEE SHEET 3 OF 5

CONTRACT NO. <u>24-0978-D</u>	WATER HOUSE CONNECTIONS- AS-BUILT	MURRAY HILL SECTION 1 ELECTION DISTRICT NO. 6	DRAWING NO. 2B OF 5	SCALE AS SHOWN
-------------------------------	--------------------------------------	--	------------------------	----------------------



**PLAN**  
SCALE: 1"=50'



DEPARTMENT OF PUBLIC WORKS  
HOWARD COUNTY, MARYLAND

*John E. Nimmick* 1-31-81 *William S. Reddy* 7/31/81  
DIRECTOR OF PUBLIC WORKS DATE CHIEF BUREAU OF ENGINEERS DATE

*Robert M. Benjamin* 7-30-81 *Joseph J. ...* 7/31/81  
CHIEF BUREAU OF UTILITIES DATE CHIEF LAND DEVELOPMENT DIVISION DATE

**BOENDER ASSOCIATES, INC.**  
ENGINEERS, PLANNERS, SURVEYORS  
BALTIMORE MD. 465-7777 SALISBURY MD. 749-1288

CONTRACT NO. 24-0978-D

**PLAN**

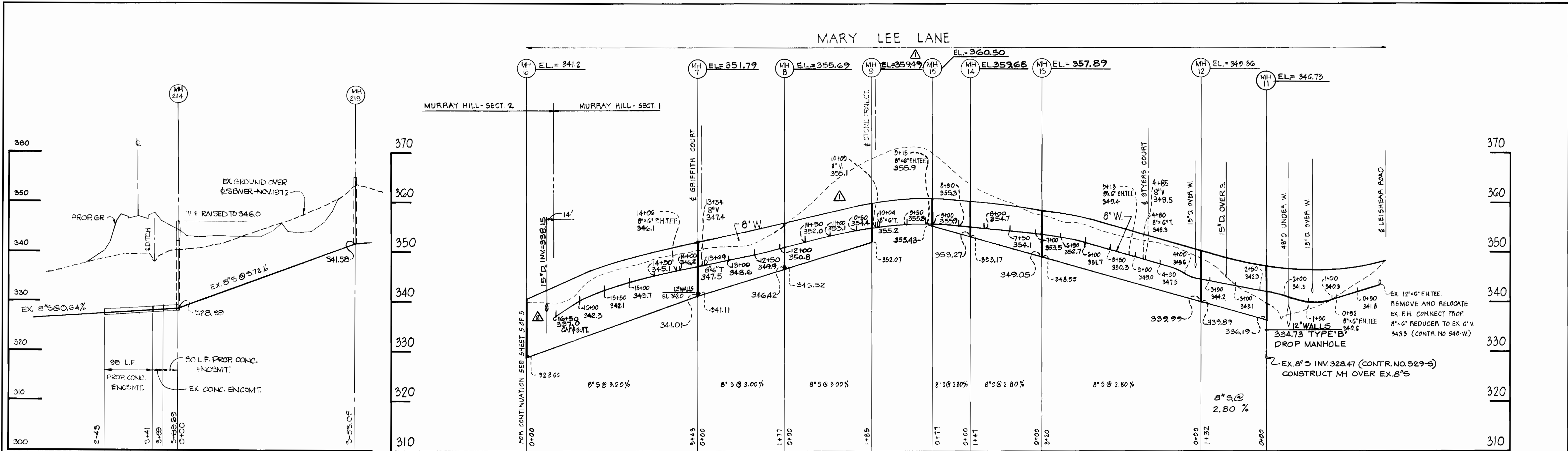
MURRAY HILL SECTION 1  
ELECTION DISTRICT NO. 6

12-18-81 RKS, ADDED 14 S.H.C. MARYLEE LANE  
REV 12-14-81 JB - SEWER ALIGNMENT BETWEEN MH 1 & MH 3

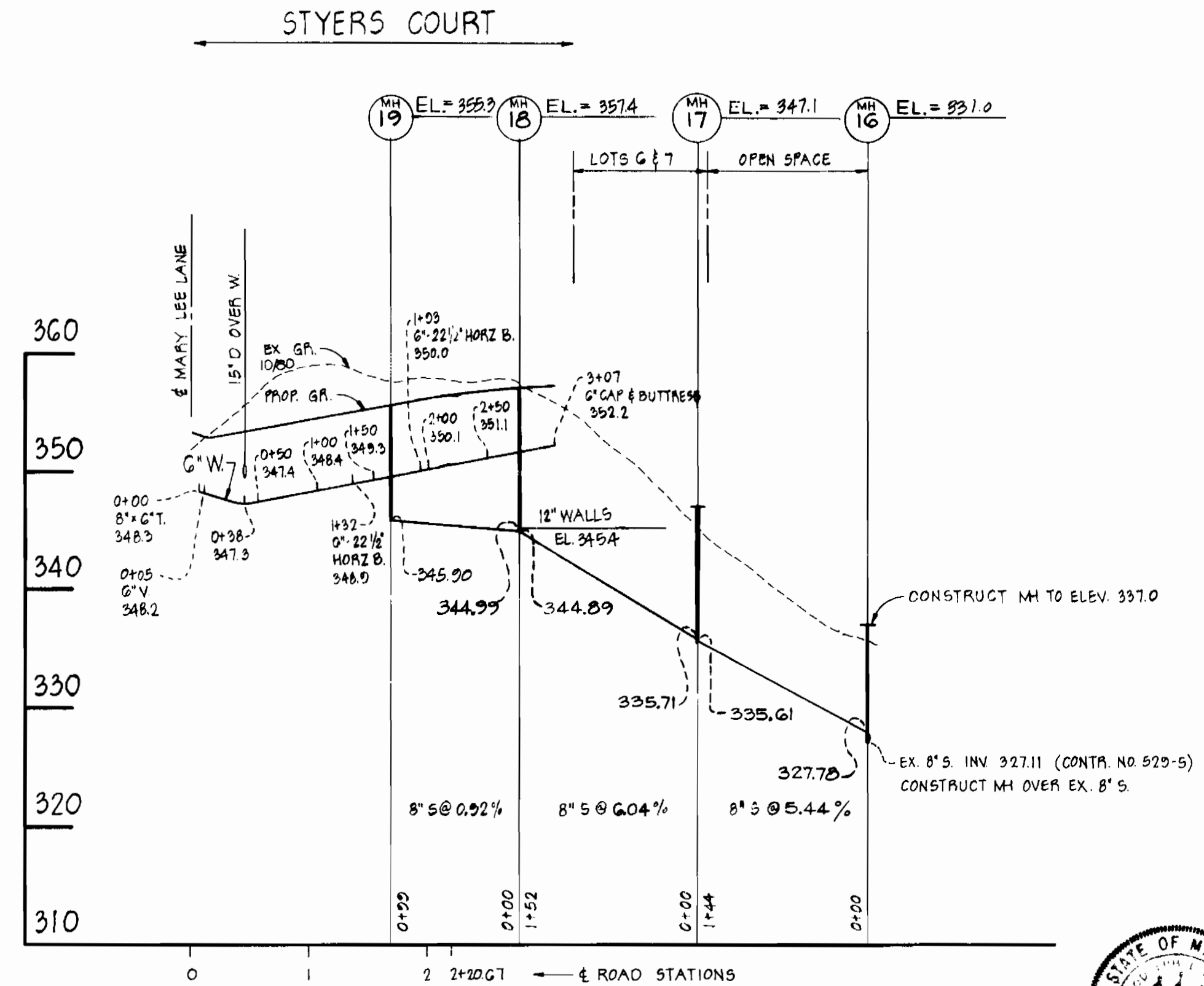
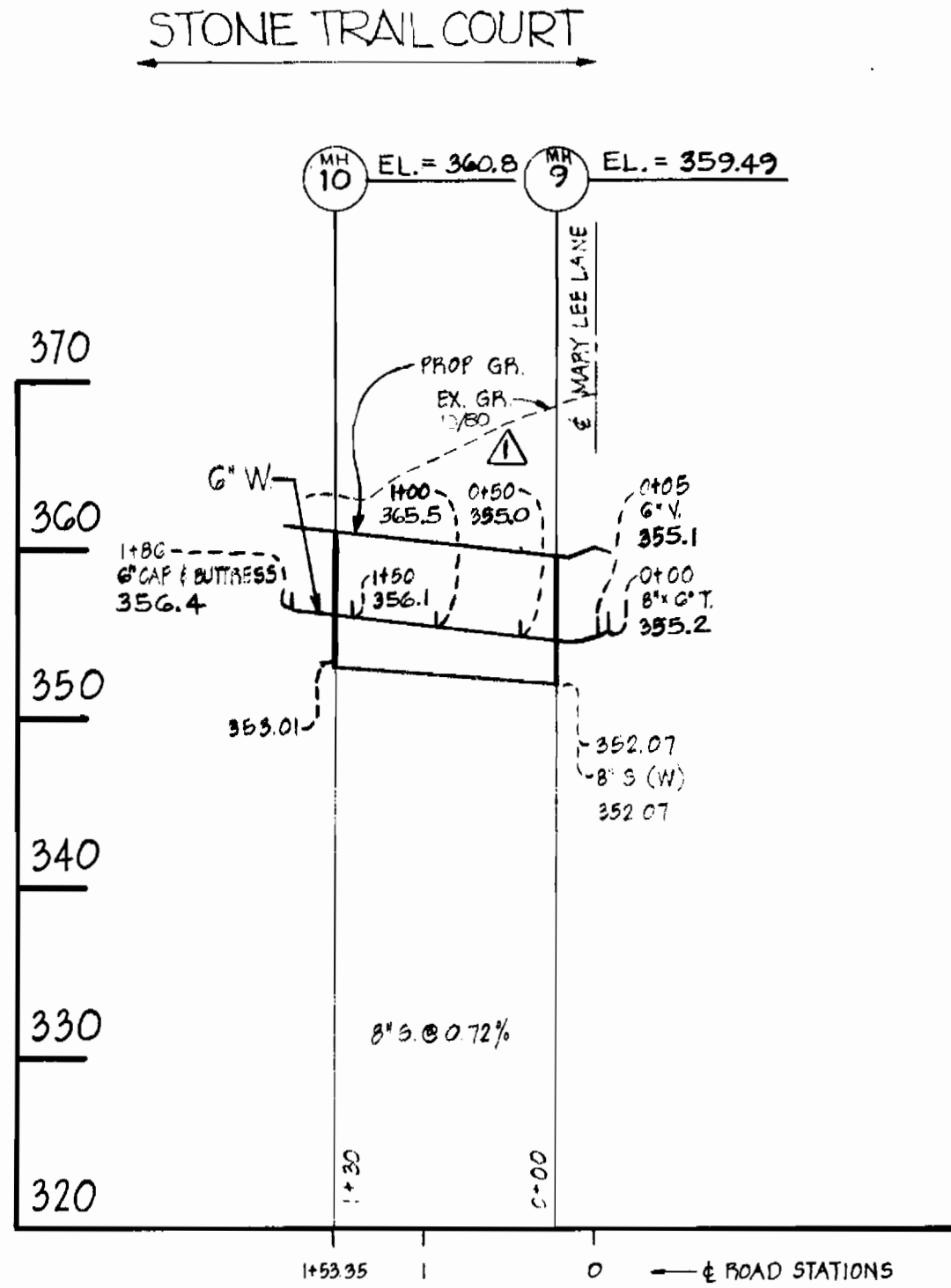
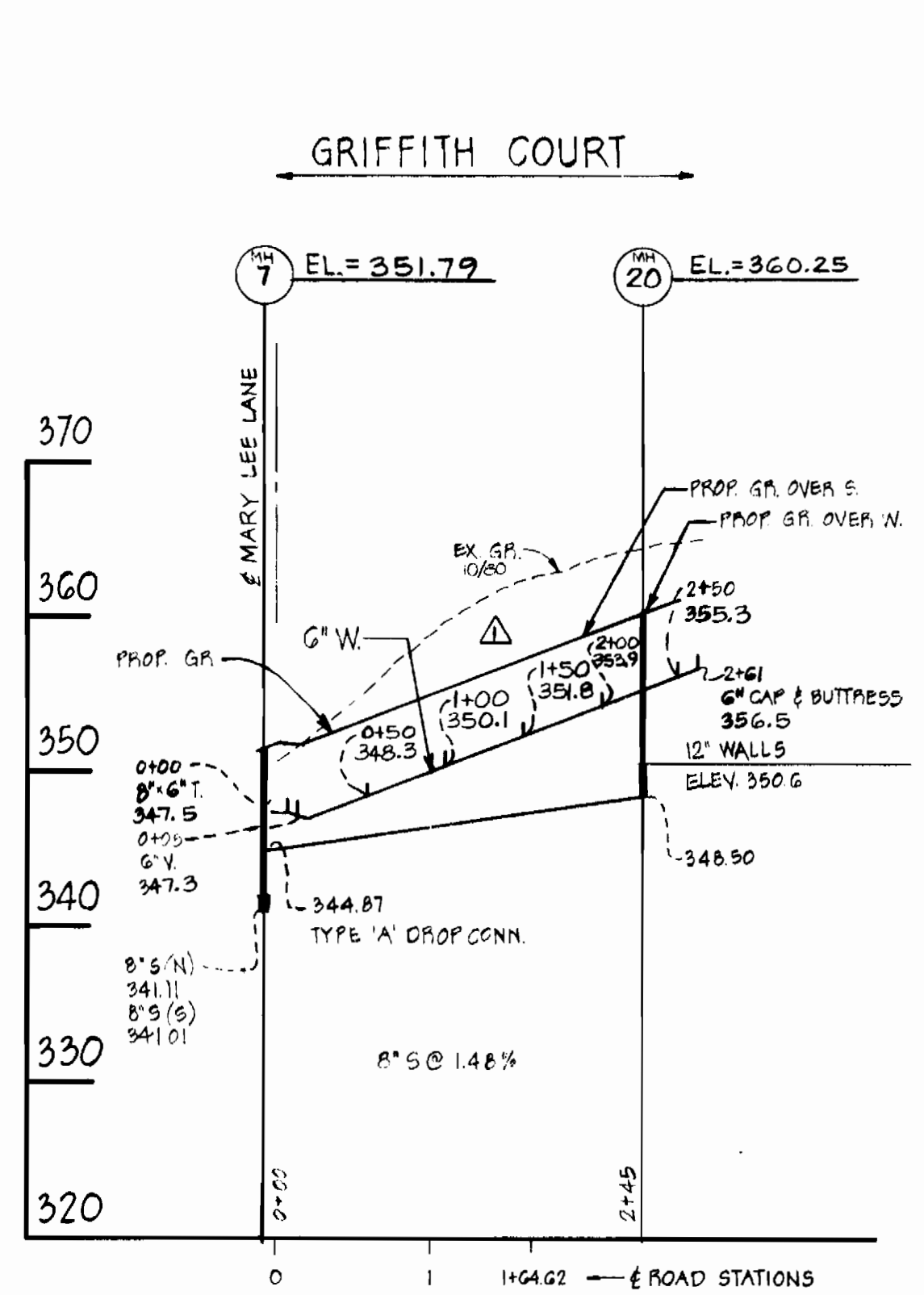
DRAWING NO. **3 OF 5**

SCALE AS SHOWN

Des.: B.S.  
Drw.: B.S.  
Chk.: R.M.  
Job: 80034



NOTE: WHILE CLEARING FOR SEDIMENT CONTROL, RAISE EX. SAN. MH #214 TO ELEV. 346.0 ENCASE EX. 8" S IN CONCRETE, BEGIN AT SAN. STA. 2+45 AND ENCASE TO EX. SAN. MH 214.



**PROFILES**

SCALE: HORIZ 1"=100'  
VERT 1"=10'

DEPARTMENT OF PUBLIC WORKS  
HOWARD COUNTY, MARYLAND

Director of Public Works: *John F. Nunn* DATE: 1/31/81  
Chief Bureau of Engineers: *William S. Brown* DATE: 7/31/81  
Chief Bureau of Utilities: *Robert M. Beuninger* DATE: 7/30/81  
Chief Land Development Division: *Joseph J. ...* DATE: 7/27/81

**BOENDER ASSOCIATES, INC.**  
ENGINEERS, PLANNERS, SURVEYORS  
BALTIMORE MD. 465-7777  
SALISBURY MD. 749-1288

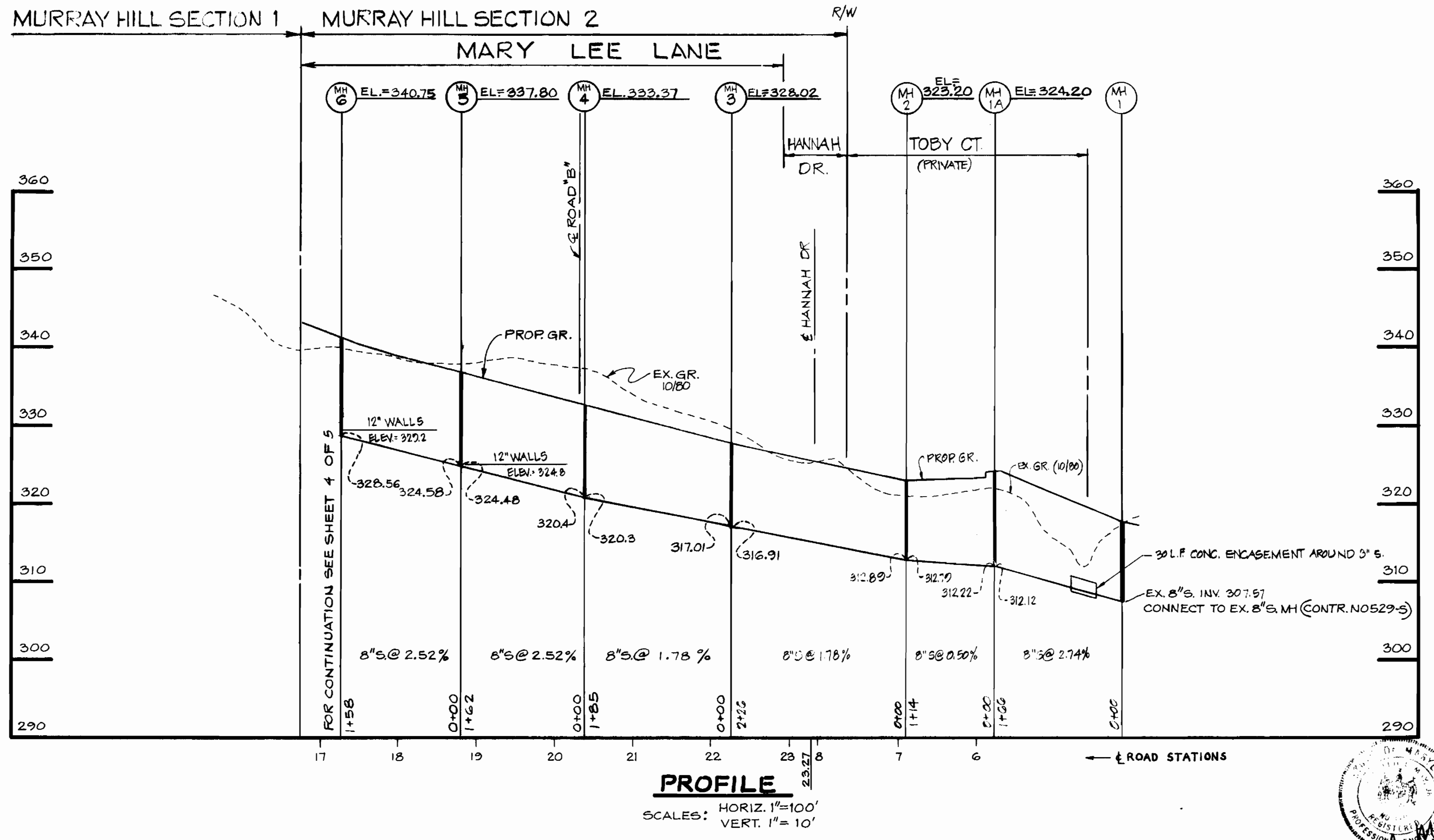
CONTRACT NO. 24-0978-D

**PROFILES**

12-18-81 R.R.S. REV. WATER MAIN INV. @ STA. 16+50 TO CLEAR 15" D.  
11-18-81 R.R.S. REV. MARY LEE LANE, GRIFFITH CT. AND STONETRAIL CT., ROAD AND WATER ELEV.

MURRAY HILL SECTION I  
ELECTION DISTRICT NO. 6

DRAWING NO. 4 OF 5  
SCALE AS SHOWN  
Des.: J. B.  
Dwn.: J. B.  
Chk.: R. M.  
Job: 80034



DEPARTMENT OF PUBLIC WORKS  
HOWARD COUNTY, MARYLAND

<i>John F. Nunn</i> DIRECTOR OF PUBLIC WORKS	7-31-81 DATE	<i>John E. R...</i> CHIEF BUREAU OF ENGINEERS	7/31/81 DATE
<i>Robert M. ...</i> CHIEF BUREAU OF UTILITIES	7-30-81 DATE	<i>Joseph ...</i> CHIEF LAND DEVELOPMENT DIVISION	7/31/81 DATE

**BOENDER ASSOCIATES, INC.**  
ENGINEERS, PLANNERS, SURVEYORS  
BALTIMORE, MD. 465-7777    SALISBURY, MD. 749-1286

CONTRACT NO. 24-0978-D

PROFILE

MURRAY HILL SECTION 1  
ELECTION DISTRICT NO. 6

DRAWING NO.  
5 OF 5

SCALE AS SHOWN  
Des. B. S.  
Drw. B. S.  
Chk. R. M.  
Job: 80034

REV. 12-14-81 J.D. - PROFILE BETWEEN MH 1 & MH 3

AS-BUILT NOV 17, 1982