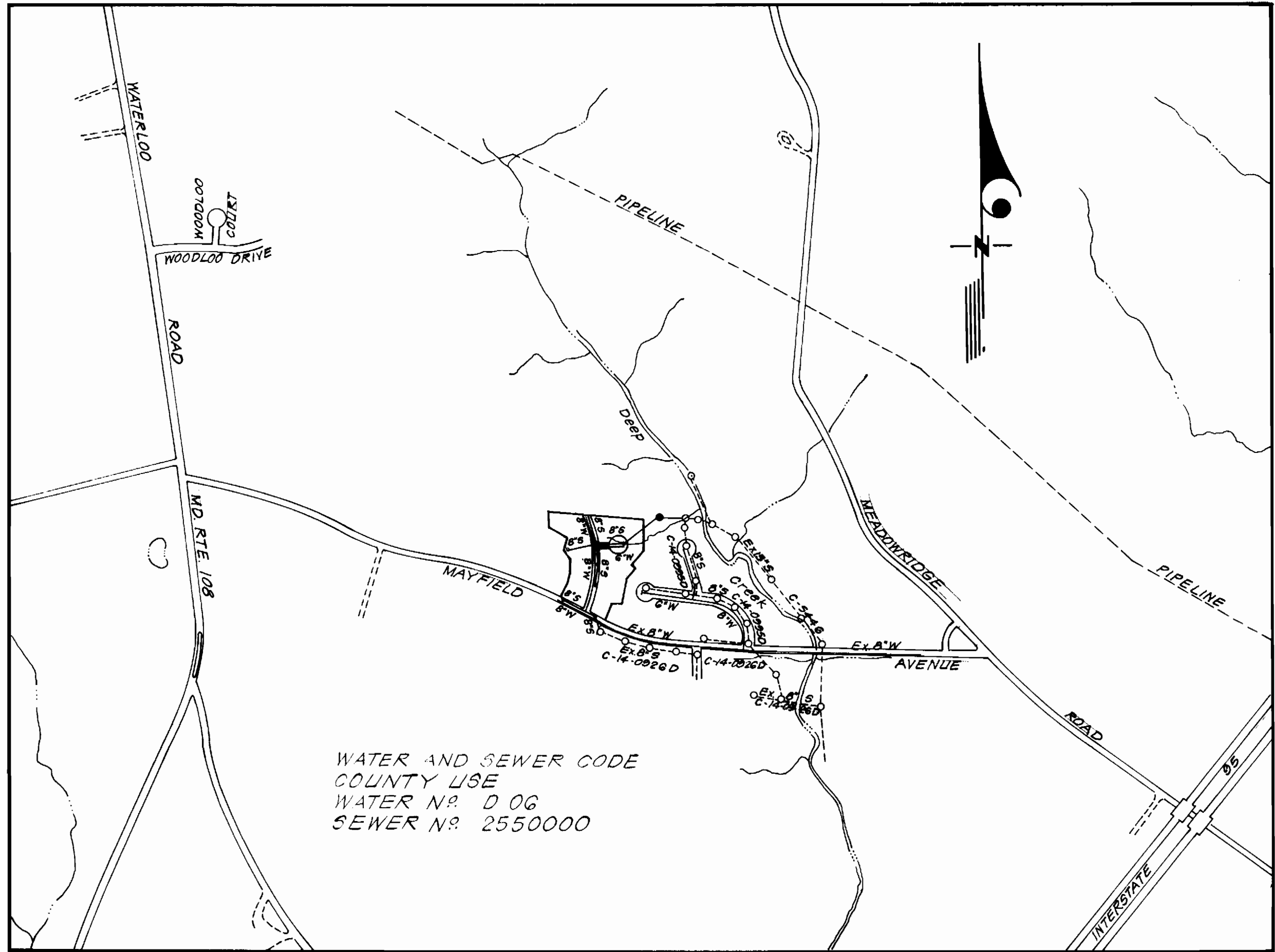


Type of Buildings	Single Family
Number of Lots	22
Number of Water House Connections	22
Number of Sewer House Connections	22
Drainage Area	Patapsco



WATER AND SEWER CODE  
 COUNTY USE  
 WATER N<sup>o</sup>. D 06  
 SEWER N<sup>o</sup>. 2550000

VICINITY MAP

Scale: 1" = 600'

Sediment Control Measures will be implemented in accordance with Article No. 15 of the Specifications & with Road Construction Plan F81-129; Drawing 4, Sediment & Erosion Control.

REVIEWED FOR HOWARD SOIL CONSERVATION DISTRICT AND MEETS TECHNICAL REQUIREMENT.

*James M. DeLo* 7-14-81  
 SIGNATURE DATE

U.S. SOIL CONSERVATION SERVICE

This Development Plan is approved for Soil Erosion and Sediment Control by the Howard Soil Conservation District.

APPROVED:

*W. T. Roman* 7-13-81  
 HOWARD S.C.D. DATE

DEPARTMENT OF PUBLIC WORKS  
 HOWARD COUNTY, MARYLAND

*William F. Nummy* 7-22-81 *Robert M. Brown* 7-22-81  
 DIRECTOR OF PUBLIC WORKS - DATE CHIEF, BUREAU OF ENGINEERING - DATE  
*Robert M. Brown* 7-21-81 *William F. Nummy* 7-22-81  
 CHIEF, BUREAU OF UTILITIES - DATE CHIEF, LAND DEVELOPMENT - DATE

**CLARK • FINEFROCK & SACKETT**  
 ENGINEERS • PLANNERS • SURVEYORS  
 11315 LOCKWOOD DRIVE • SILVER SPRING, MARYLAND • (301) 593-3400

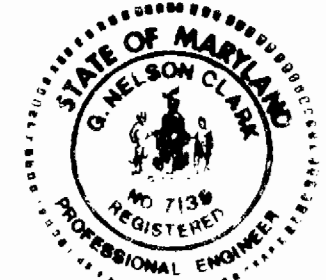
CONTRACT NO. 14-0976 D W&S  
 THOMPSONS PURCHASE  
 HOWARD COUNTY, MARYLAND  
 DEPARTMENT OF PUBLIC WORKS

QUANTITIES		
ITEM	AS-BUILT	MANUFACTURER
1" COPPER	0	FORD
3/4" COPPER	7	FORD
1" COPPER	204	CAMBRIDGE/LEE
3/4" COPPER	1024	CAMBRIDGE/LEE

- GENERAL NOTES**
- Approximate location of existing mains are shown. The contractor shall take all necessary precautions to protect existing mains and services and maintain uninterrupted supply. Any damage incurred shall be repaired immediately to the satisfaction of the Inspector, at the Contractor's expense.
  - All horizontal controls are based on Maryland State Coordinates.
  - All vertical controls are based on U.S.G.S. Datum.
  - All pipe elevations shown are invert elevations.
  - Clear all utilities by a minimum of 6" clear all poles by 2'-0" minimum or tunnel as required. Any cost incurred to the Contractor for tunneling or bracing at poles shall be included in unit prices bid for excavation and backfill.
  - For details not shown on the drawings use Howard County Standard Details.
  - For materials and construction methods use Howard County Standard Specifications.
  - Contractor shall locate existing utilities a minimum of two (2) weeks in advance of construction operations in the vicinity of proposed utilities at his own expense.
  - Contractor shall notify the following utilities or agencies at least five (5) working days before starting work shown on these plans:  
 State Highway Administration - 531-5533  
 Baltimore Gas & Electric Company - Underground Electric Distribution Customer Service - 685-0123  
 Baltimore Gas & Electric Company - Underground Gas Distribution Customer Service - 685-0123  
 Engineering - Damage Control - 234-5621  
 "Miss Utility" - 1-550-0100  
 Chesapeake & Potomac (C&P) Telephone Company - 725-9976  
 American Telephone and Telegraph - Cable Location Division - 393-3553  
 Colonial Pipeline Company - 781-4671  
 Bureau of Utilities Howard County - 932-2366
  - Trees are to be protected from damage to maximum extent. Trees located within the construction strip are not to be removed or damaged by the contractor.
  - Contractor shall remove trees, stumps, and roots along line of excavation as directed by the Inspector. Payment for such removal shall be included in the unit price bid for excavation and backfill.
  - Place regulation "Men Working" and warning signs as required to comply with Maryland State Highway Administration Manual of Traffic Control for Highway Construction and Maintenance Operations.
  - All water mains to be C.I.P. or D.I.P. unless otherwise noted.
  - Top of all water mains to have a minimum of 3'-1/2' cover unless otherwise noted.
  - Valves adjacent to trees shall be strapped to trees.
  - Block all fittings with concrete.
  - Bury line elevations on fire hydrants shall be set to the elevations shown on the drawings. All fire hydrants shall be strapped and buttressed with concrete in accordance with standard details. Soil around the fire hydrant to be compacted in accordance with Section 5-15 of the Standard Specifications.
  - All water house connections shall be for an inside meter setting.
  - The contractor shall not operate any water main valves on the existing system.
  - All sewer mains shall be C.S.P.X., V.C.P.X., or A.C.P. Class 2400 unless otherwise noted.
  - The contractor shall provide a joint in all sewer mains within 2'-0" of exterior manhole wall.
  - All manholes shall be 4'-0" inside diameter, unless otherwise noted.
  - Water main and water house connection lines must have a minimum of one foot separation from the sanitary sewer and sewer house connections as they cross. Except at crossings, Water and Sewer lines shall have a minimum horizontal separation of 10'.
  - All twin water house connections shall be one (1) inch.

QUANTITIES			
ITEM	ESTM'D	AS-BUILT	MATERIAL/SUPPLIER
8" Sewer	1593	1570 L.F.	Extrusion Technologies Inc.
6" Water	204	220 L.F.	Clow Corp.
8" Water	1150	1024	Clow Corp.
8" Valves	4	3	DRESSER
6" Valves Excluding (H. Valves)	1	1	DRESSER
F.H.	2	2	DRESSER
Prac. M.H's.	9	9	Atlantic Precast Concrete Corp.

No.	Revision	Date
1	Revised profile	9-8-81

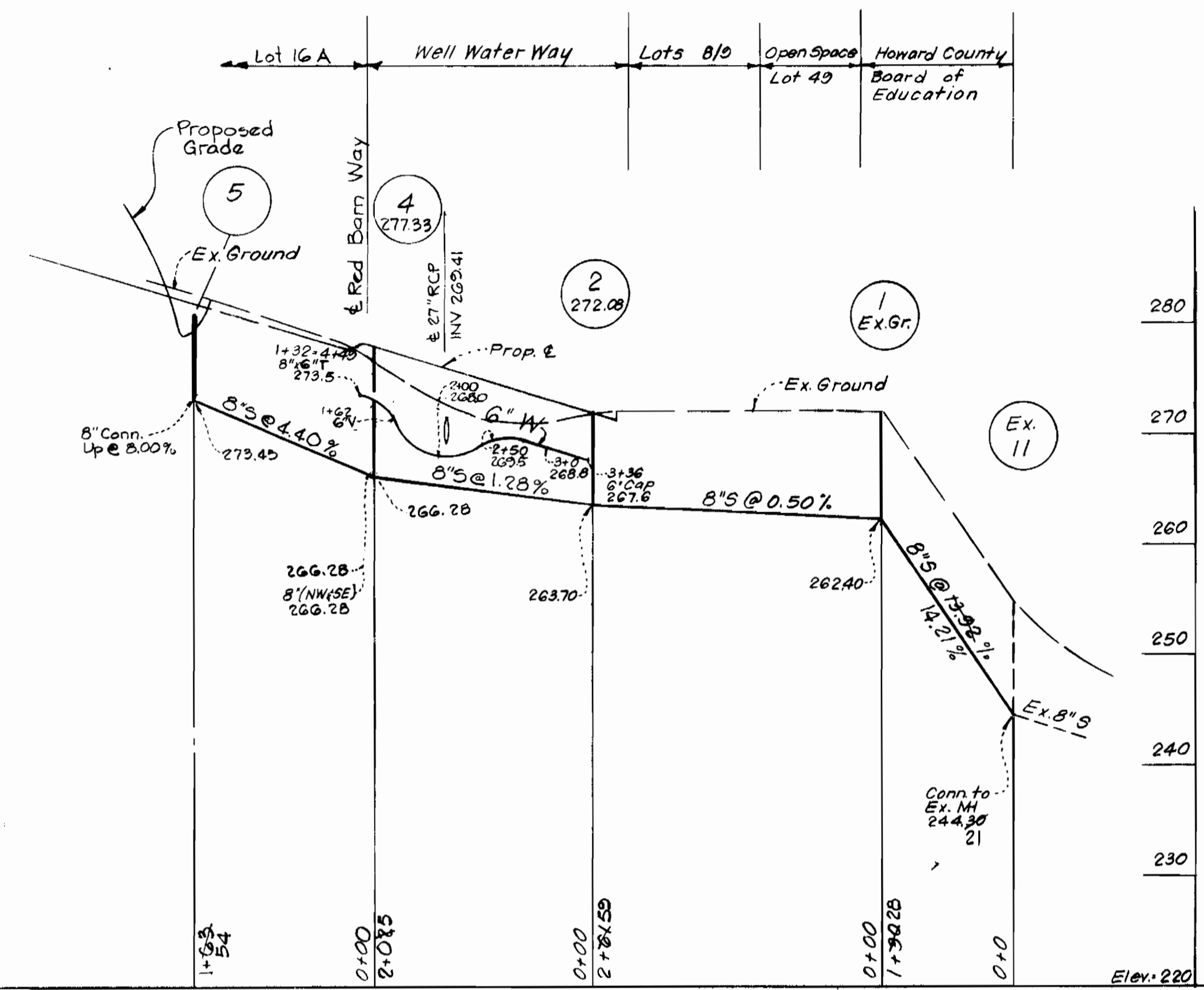
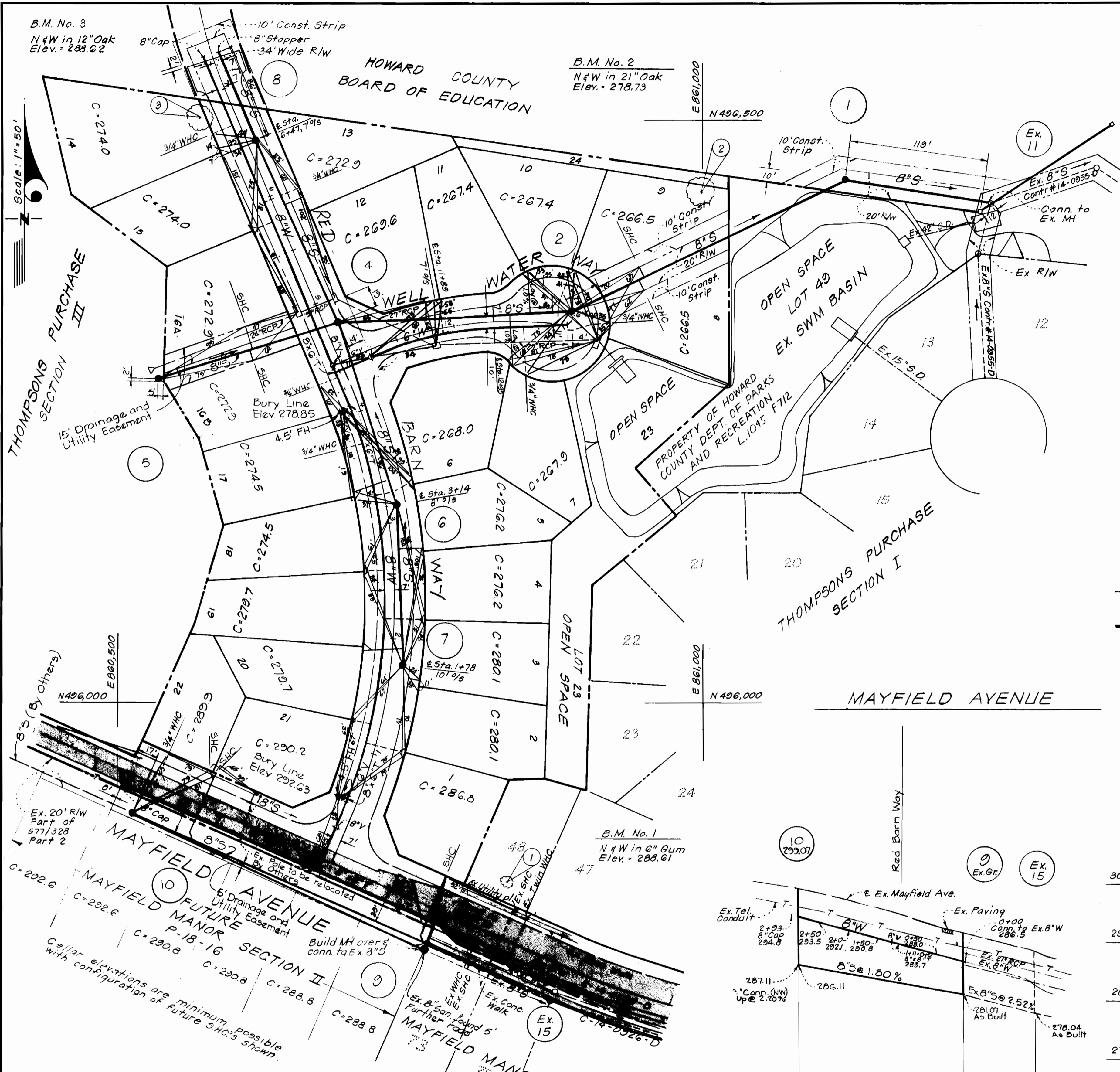


*W. F. Nummy*  
 6-17-81

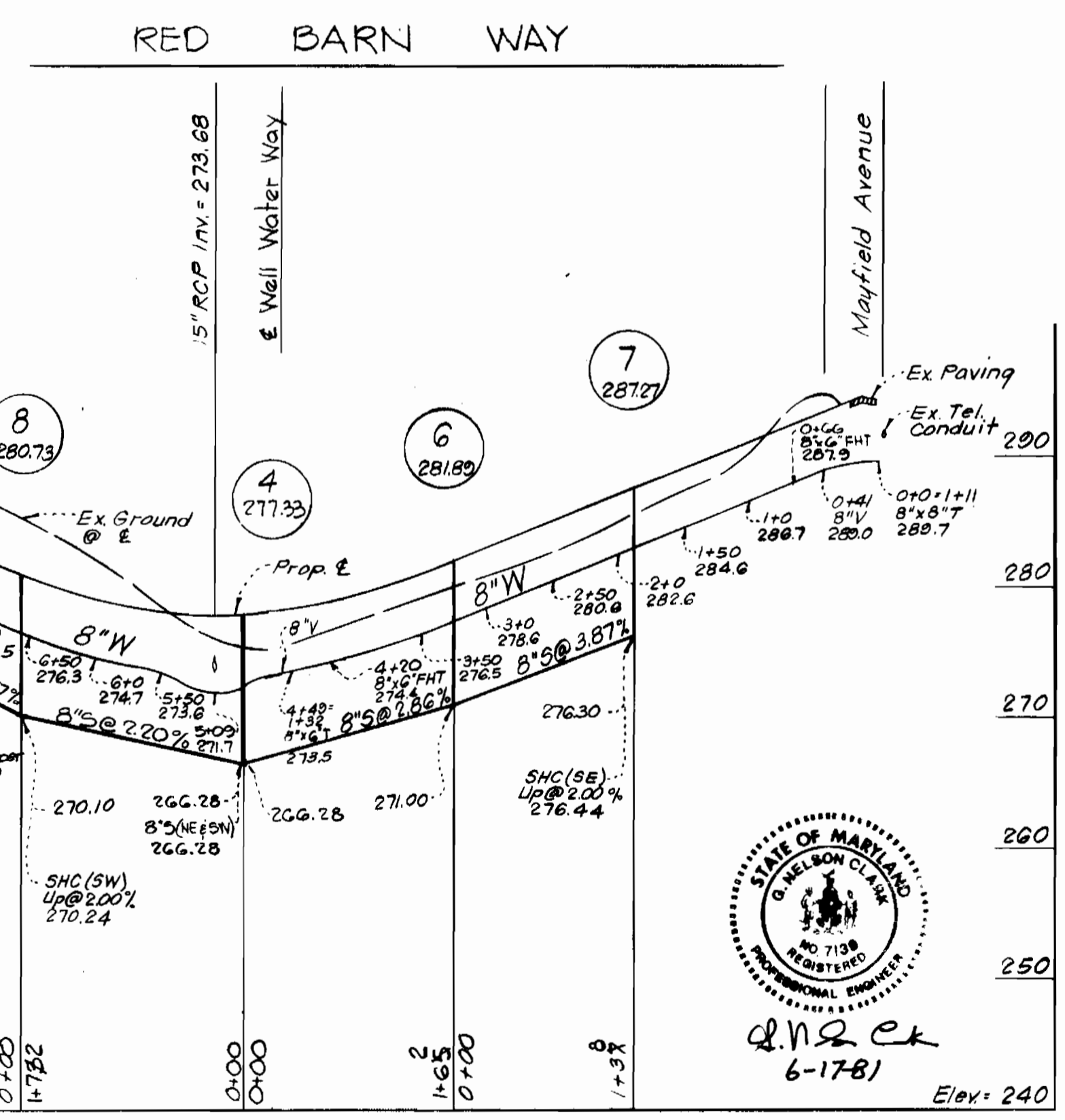
	CONTRACT NO. 14-0976-D	TITLE SHEET	SECTION TWO THOMPSON'S PURCHASE 1ST ELECTION DISTRICT	DRAWING NO. 1 OF 2	SCALE As Shown

As BUILT Feb, 1984





**PROFILE SCALE**  
 Hor: 1" = 100'  
 Vert: 1" = 10'



**DEPARTMENT OF PUBLIC WORKS**  
 HOWARD COUNTY, MARYLAND  
 Director of Public Works - Date: 7-21-91  
 Chief Bureau of Engineering - Date: 7-21-91  
 Chief Bureau of Utilities - Date: 7-21-91  
 Chief Land Development - Date: 7-21-91

**CLARK • FINEFROCK & SACKETT**  
 ENGINEERS • PLANNERS • SURVEYORS  
 11315 LOCKWOOD DRIVE • SILVER SPRING, MARYLAND • (301) 593-3400

CONTRACT NO. 14-0976-D

PLAN & PROFILES FOR  
 WATER & SEWER MAINS

1	5-27-85	Revised Water + Sewer	Revised by T.S. & A.
No.	Date	Revision	

**SECTION TWO**  
**THOMPSON'S PURCHASE**  
**1ST ELECTION DISTRICT**

**DRAWING NO. 2 OF 2**  
**SCALE As Shown**

BUILT Feb. 1984