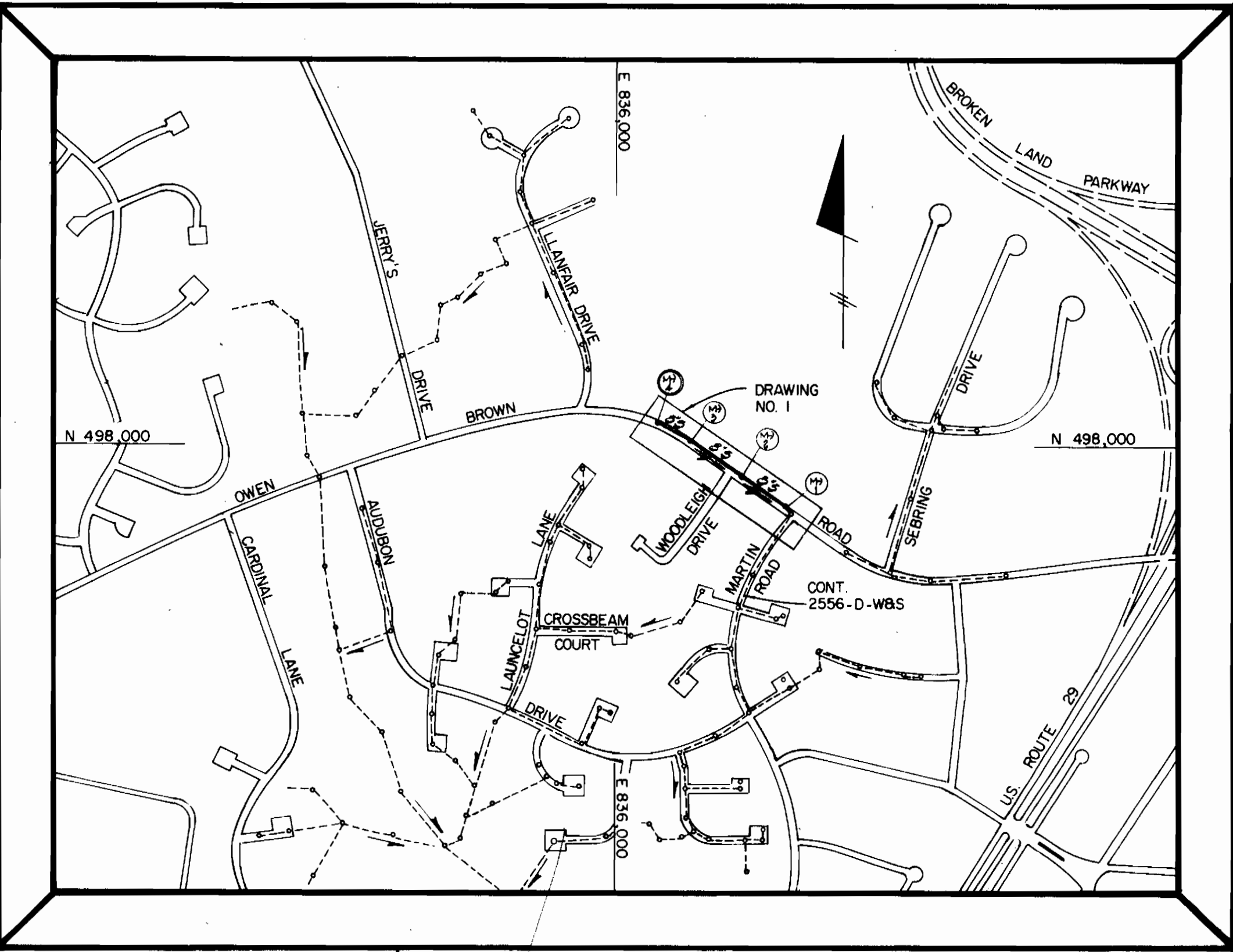


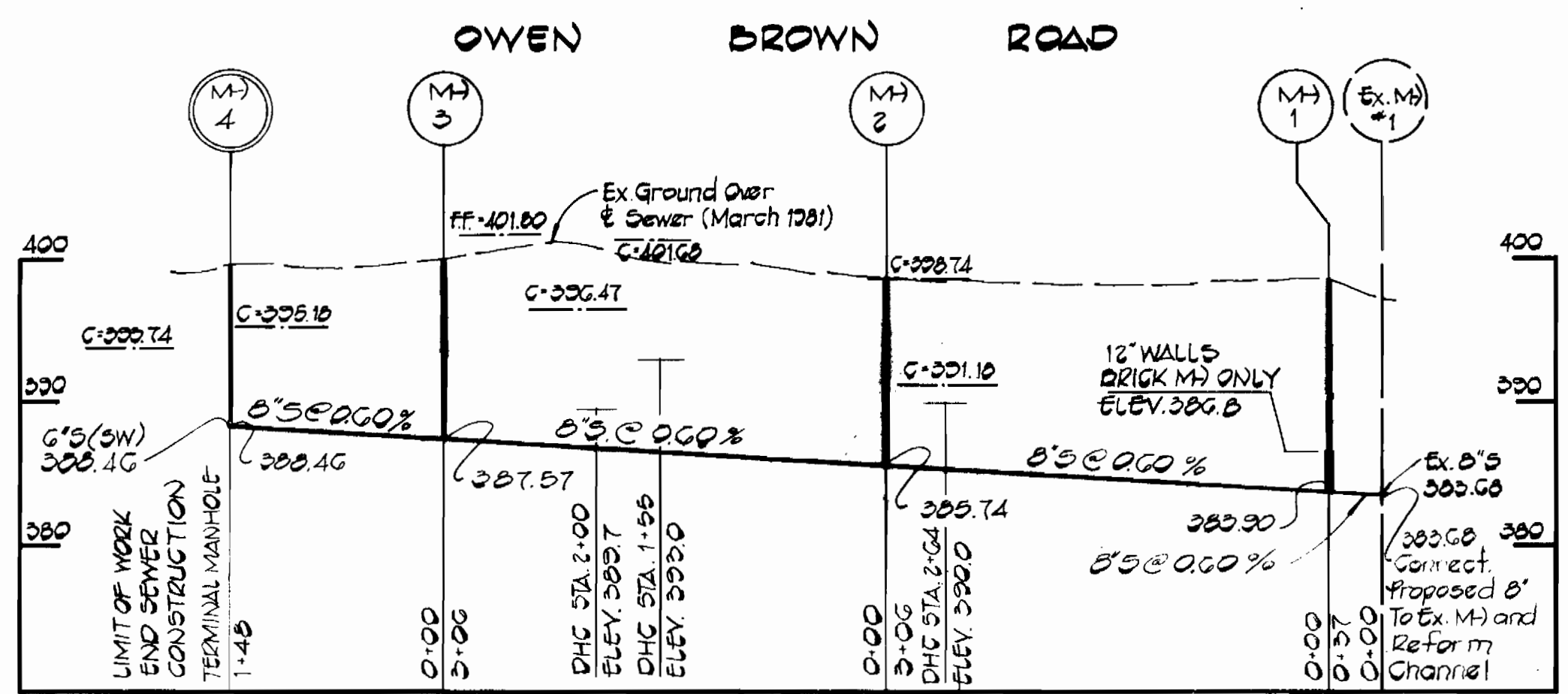
BENCH MARKS
 D.M. #1 399.37
 R.R. Spike in Pole - GPE 254700
 ± 54' East of P.I. "OD-2"
 D.M. #OD-0 399.00
 F.C.C. Traverse STA. 10' off Edge
 Road, 575' West of Intersection
 of WOODLEIGH DRIVE AND OWEN BROWN RD



NUMBER OF LOTS 3
 NUMBER OF SEWER HOUSE CONNECTION 3
 DRAINAGE AREA - LITTLE PATUXENT
 SEWER CODE - FOR COUNTY
 USE ONLY - SEWER NO. 5324400

VICINITY MAP
 SCALE 1" = 600'
GENERAL NOTES

- APPROXIMATE LOCATION OF EXISTING MAINS ARE SHOWN. THE CONTRACTOR SHALL TAKE ALL NECESSARY PRECAUTIONS TO PROTECT EXISTING MAINS AND SERVICES AND MAINTAIN UNINTERRUPTED SUPPLY. ANY DAMAGE INCURRED SHALL BE REPAIRED IMMEDIATELY TO THE SATISFACTION OF THE ENGINEER, AT THE CONTRACTOR'S EXPENSE.
- ALL HORIZONTAL CONTROLS ARE BASED ON MARYLAND STATE COORDINATES.
- ALL VERTICAL CONTROLS ARE BASED ON U.S.G.S. DATUM.
- ALL PIPE ELEVATIONS SHOWN ARE INVERT ELEVATIONS.
- CLEAR ALL UTILITIES BY A MINIMUM OF 6". CLEAR ALL POLES BY 2'-0" MINIMUM OR TUNNEL AS REQUIRED. ANY COST INCURRED TO THE CONTRACTOR FOR TUNNELING OR BRACING AT POLES SHALL BE INCLUDED IN UNIT PRICES BID FOR EXCAVATION AND BACKFILL.
- FOR DETAILS NOT SHOWN ON THE DRAWING USE HOWARD COUNTY STANDARD DETAILS.
- FOR MATERIAL AND CONSTRUCTION METHODS USE HOWARD COUNTY STANDARD SPECIFICATIONS.
- CONTRACTOR SHALL LOCATE EXISTING UTILITIES A MINIMUM OF TWO (2) WEEKS IN ADVANCE OF CONSTRUCTION OPERATIONS IN THE VICINITY OF PROPOSED UTILITIES AT HIS OWN EXPENSE.
- CONTRACTOR SHALL NOTIFY THE FOLLOWING UTILITIES OR AGENCIES AT LEAST FIVE (5) WORKING DAYS BEFORE STARTING WORK SHOWN ON THESE PLANS:
 BALTIMORE GAS & ELECTRIC COMPANY - UNDERGROUND ELECTRIC DISTRIBUTION
 CUSTOMER SERVICE - 685-0123
 BALTIMORE GAS & ELECTRIC COMPANY - UNDERGROUND GAS DISTRIBUTION
 CUSTOMER SERVICE - 685-0123
 ENGINEERING - "DAMAGE CONTROL" - 234-5621
 "MISS UTILITY" - 1-559-0100
 CHESAPEAKE & POTOMAC (C&P) TELEPHONE - 725-9976
 BUREAU OF UTILITIES HOWARD COUNTY - 992-2366
- TREES ARE TO BE PROTECTED FROM DAMAGE TO MAXIMUM EXTENT. TREES LOCATED WITHIN THE CONSTRUCTION STRIP ARE NOT TO BE REMOVED OR DAMAGED BY THE CONTRACTOR.
- CONTRACTOR SHALL REMOVE TREES, STUMPS AND ROOTS ALONG LINE OF EXCAVATION AS DIRECTED BY THE ENGINEER. PAYMENT FOR SUCH REMOVAL SHALL BE INCLUDED IN THE UNIT PRICE BID FOR EXCAVATION AND BACKFILL.
- PLACE REGULATION "MEN WORKING" AND WARNING SIGNS AS REQUIRED TO COMPLY WITH MARYLAND STATE HIGHWAY ADMINISTRATION MANUAL OF TRAFFIC CONTROL FOR HIGHWAY CONSTRUCTION AND MAINTENANCE OPERATIONS.
- ALL SEWER MAINS SHALL BE C.S.P.X., V.C.P.X., OR A.C.P. CLASS 2400 UNLESS OTHERWISE NOTED.
- THE CONTRACTOR SHALL PROVIDE A JOINT IN ALL SEWER MAINS WITHIN 2'-0" OF EXTERIOR WALLS.
- ALL MANHOLES SHALL BE 4'-0" INSIDE DIAMETER, UNLESS OTHERWISE NOTED.
- MANHOLES SHOWN WITH 12" AND 16" WALLS ARE BRICK MANHOLES ONLY.



QUANTITIES

ITEM	EST'D AS-BUILT	SUPPLIER
8" SEWER 797 LF	783.0	CARLON PVC
12" SEWER 206 LF	204	CARLON PVC
MANHOLES 4 EA	4	ATLANTIC



DEPARTMENT OF PUBLIC WORKS
 HOWARD COUNTY, MARYLAND
 Director of Public Works: *May F. Nemmy* 5-5-81
 Chief, Bureau of Engineering: *R. J. Ryan* 5/14/81
 Chief, Bureau of Utilities: *Allen J. Brown* 4/30/81

FISHER, COLLINS AND CARTER, INC.
 CIVIL ENGINEERS AND LAND SURVEYORS
 8388 COURT AVENUE
 ELLICOTT CITY, MARYLAND 21043

CONTRACT NO. 20-0974
 CAPITAL PROJECT S-1-6109

PLAN & PROFILE
 SEWER MAINS

**OWEN BROWN ROAD COLLECTOR
 SEWER MAIN EXTENSION
 ELECTION DISTRICT 5
 HOWARD COUNTY, MARYLAND**

CONTRACT NO. 20-0974
 CAPITAL PROJECT S-1-6109
 OWEN BROWN ROAD COLLECTOR
 SEWER MAIN EXTENSION
 HOWARD COUNTY, MARYLAND

DRAWING NO. 1 OF 1
 SCALE AS SHOWN
 DES: D.D.S.
 DRN: D.D.S.
 CHK: T.A.F.

WD #1011G

AS-BUILT OCT. 6, 1982