

Waste Water Disposal: Savage
 Type of buildings: Single Family
 No of S.H.C. 0
 No of W.H.C. 0

WATER & SEWER CODE
 County Use:
 Water: N/A
 Sewer: 6250000

CONTRACT NO. 30-0972-D

VILLAGE OF KINGS CONTRIVANCE

HOWARD COUNTY, MARYLAND

QUANTITIES			
ITEM	BID	AS-BUILT	MATERIAL/SUPPLIER
8" Sewer - L.F.	1740	1750.5	DAY CONTRACTOR, APT
Manholes - Ea.	10	10	ATLANTIC CORP
8" Water			
6" Water			
8" Valves			
6" V (Excluding F.H.V.)			
Fine Hydrants			

REVIEWED FOR HOWARD SOIL CONSERVATION DISTRICT AND MEETS TECHNICAL REQUIREMENT

[Signature] 5-6-81
 DATE
 U.S. SOIL CONSERVATION SERVICE

This Development Plan is approved for Soil Erosion and Sediment Control by the Howard County Conservation District.

APPROVED:
[Signature] 5-6-81
 HOWARD SCD. DATE

DEPARTMENT OF PUBLIC WORKS
 HOWARD COUNTY, MARYLAND

[Signature] 5-7-81 *[Signature]* 5/8/81
 CHIEF-BUREAU OF UTILITIES-DATE CHIEF-BUREAU OF ENGINEERING-DATE

Sediment Control Measures for this Contract will be implemented in accordance with Article 15 of the Standard Specifications.

WHITMAN, REQUARDT & ASSOCIATES
 ENGINEERS
 2315 ST. PAUL ST.
 BALTIMORE, MARYLAND

DEPARTMENT OF PUBLIC WORKS
 HOWARD COUNTY, MARYLAND

[Signature] 5-11-81 *[Signature]* 5-8-81
 DIRECTOR OF PUBLIC WORKS-DATE CHIEF-LAND DEVELOPMENT DIVISION-DATE

CONTRACT NO. 30-0972-D

LOCATION MAP OF SEWER MAINS

COLUMBIA
 VILLAGE OF KINGS CONTRIVANCE
 ELECTION DISTRICT GUILFORD NO. 6

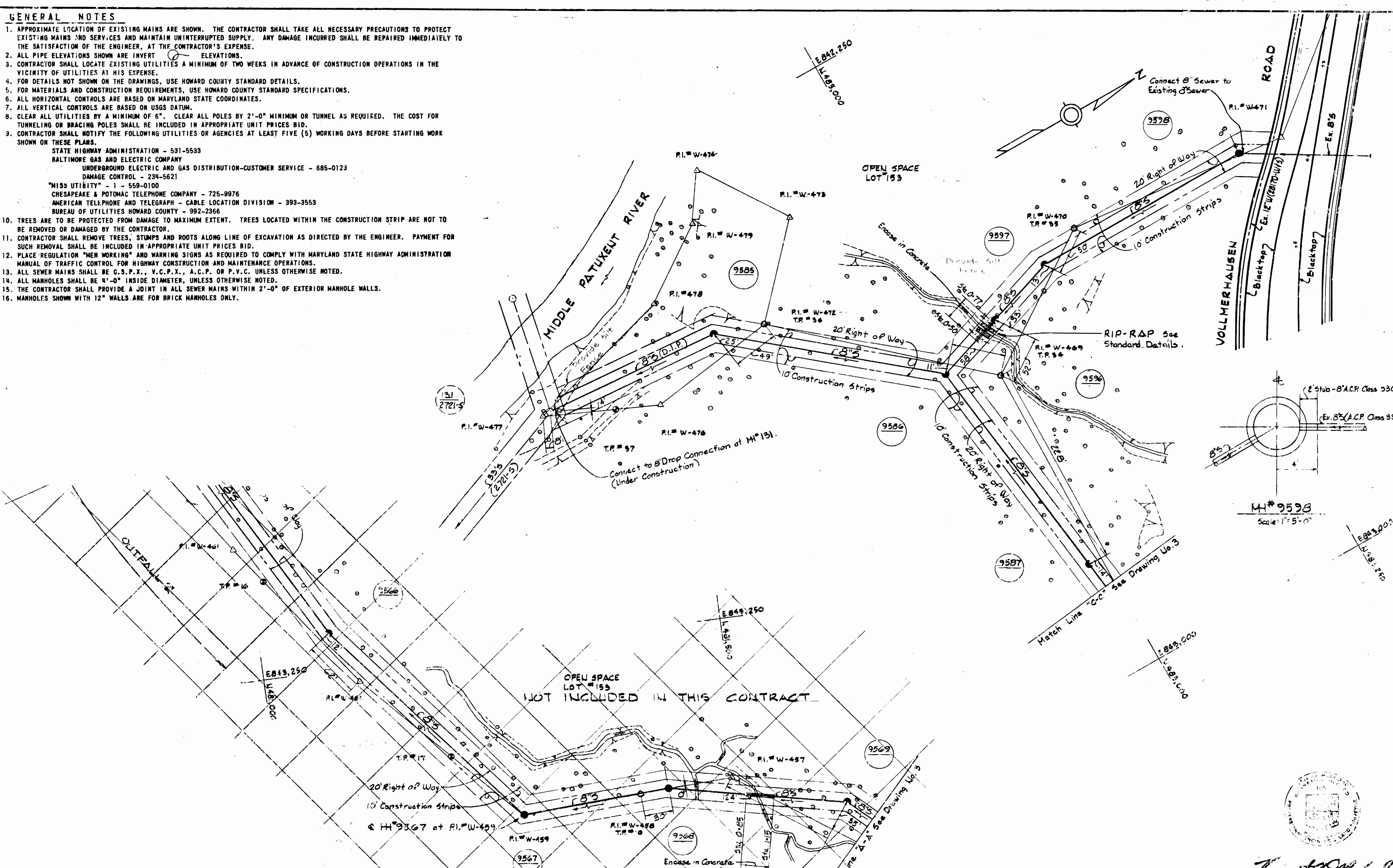
DRAWING NO. 1 OF 4 SCALE 1"=600'

See drawing No. 2 for General Notes

Village of Kings Contrivance
 Section 3, Area 2, Phase II, Part 4
 Contract No. 30-0972-D -Outfall-

GENERAL NOTES

- APPROXIMATE LOCATION OF EXISTING MAINS ARE SHOWN. THE CONTRACTOR SHALL TAKE ALL NECESSARY PRECAUTIONS TO PROTECT EXISTING MAINS AND SERVICES AND MAINTAIN UNINTERRUPTED SUPPLY. ANY DAMAGE INCURRED SHALL BE REPAIRED IMMEDIATELY TO THE SATISFACTION OF THE ENGINEER, AT THE CONTRACTOR'S EXPENSE.
- ALL PIPE ELEVATIONS SHOWN ARE INVERT ELEVATIONS.
- CONTRACTOR SHALL LOCATE EXISTING UTILITIES A MINIMUM OF TWO WEEKS IN ADVANCE OF CONSTRUCTION OPERATIONS IN THE VICINITY OF UTILITIES AT HIS EXPENSE.
- FOR DETAILS NOT SHOWN ON THE DRAWINGS, USE HOWARD COUNTY STANDARD DETAILS.
- FOR MATERIALS AND CONSTRUCTION REQUIREMENTS, USE HOWARD COUNTY STANDARD SPECIFICATIONS.
- ALL HORIZONTAL CONTROLS ARE BASED ON MARYLAND STATE COORDINATES.
- ALL VERTICAL CONTROLS ARE BASED ON USGS DATUM.
- CLEAR ALL UTILITIES BY A MINIMUM OF 6". CLEAR ALL POLES BY 2'-0" MINIMUM OR TUNNEL AS REQUIRED. THE COST FOR TUNNELING OR BRACING POLES SHALL BE INCLUDED IN APPROPRIATE UNIT PRICES-BID.
- CONTRACTOR SHALL NOTIFY THE FOLLOWING UTILITIES OR AGENCIES AT LEAST FIVE (5) WORKING DAYS BEFORE STARTING WORK SHOWN ON THESE PLANS.
 STATE HIGHWAY ADMINISTRATION - 531-5533
 BALTIMORE GAS AND ELECTRIC COMPANY
 UNDERGROUND ELECTRIC AND GAS DISTRIBUTION-CUSTOMER SERVICE - 685-0123
 DAMAGE CONTROL - 234-5621
 "MISS UTILITY" - 1 - 559-0100
 CHESAPEAKE & POTOMAC TELEPHONE COMPANY - 725-9976
 AMERICAN TELEPHONE AND TELEGRAPH - CABLE LOCATION DIVISION - 393-3553
 BUREAU OF UTILITIES HOWARD COUNTY - 992-2366
- TREES ARE TO BE PROTECTED FROM DAMAGE TO MAXIMUM EXTENT. TREES LOCATED WITHIN THE CONSTRUCTION STRIP ARE NOT TO BE REMOVED OR DAMAGED BY THE CONTRACTOR.
- CONTRACTOR SHALL REMOVE TREES, STUMPS AND ROOTS ALONG LINE OF EXCAVATION AS DIRECTED BY THE ENGINEER. PAYMENT FOR SUCH REMOVAL SHALL BE INCLUDED IN APPROPRIATE UNIT PRICES BID.
- PLACE REGULATION "MEN WORKING" AND WARNING SIGNS AS REQUIRED TO COMPLY WITH MARYLAND STATE HIGHWAY ADMINISTRATION MANUAL OF TRAFFIC CONTROL FOR HIGHWAY CONSTRUCTION AND MAINTENANCE OPERATIONS.
- ALL SEWER MAINS SHALL BE C.S.P.X., V.C.P.X., A.C.P. OR P.V.C. UNLESS OTHERWISE NOTED.
- ALL MANHOLES SHALL BE 4'-0" INSIDE DIAMETER, UNLESS OTHERWISE NOTED.
- THE CONTRACTOR SHALL PROVIDE A JOINT IN ALL SEWER MAINS WITHIN 2'-0" OF EXTERIOR MANHOLE WALLS.
- MANHOLES SHOWN WITH 12" WALLS ARE FOR BRICK MANHOLES ONLY.



DEPARTMENT OF PUBLIC WORKS
 HOWARD COUNTY, MARYLAND
 Robert M. Reardon 5-7-81
 CHIEF-BUREAU OF UTILITIES-DATE
 Whitman, Reardon & Associates
 ENGINEERS
 2315 ST. PAUL ST.
 BALTIMORE, MARYLAND

DEPARTMENT OF PUBLIC WORKS
 HOWARD COUNTY, MARYLAND
 W. O. 7500-2
 CHIEF-LAND DEVELOPMENT DIVISION-DATE
 DIRECTOR OF PUBLIC WORKS-DATE

CONTRACT NO 30-0972-D

PLAN OF SEWER MAINS

COLUMBIA VILLAGE OF KINGS CONTRIVANCE ELECTION DISTRICT GUILFORD NO.6

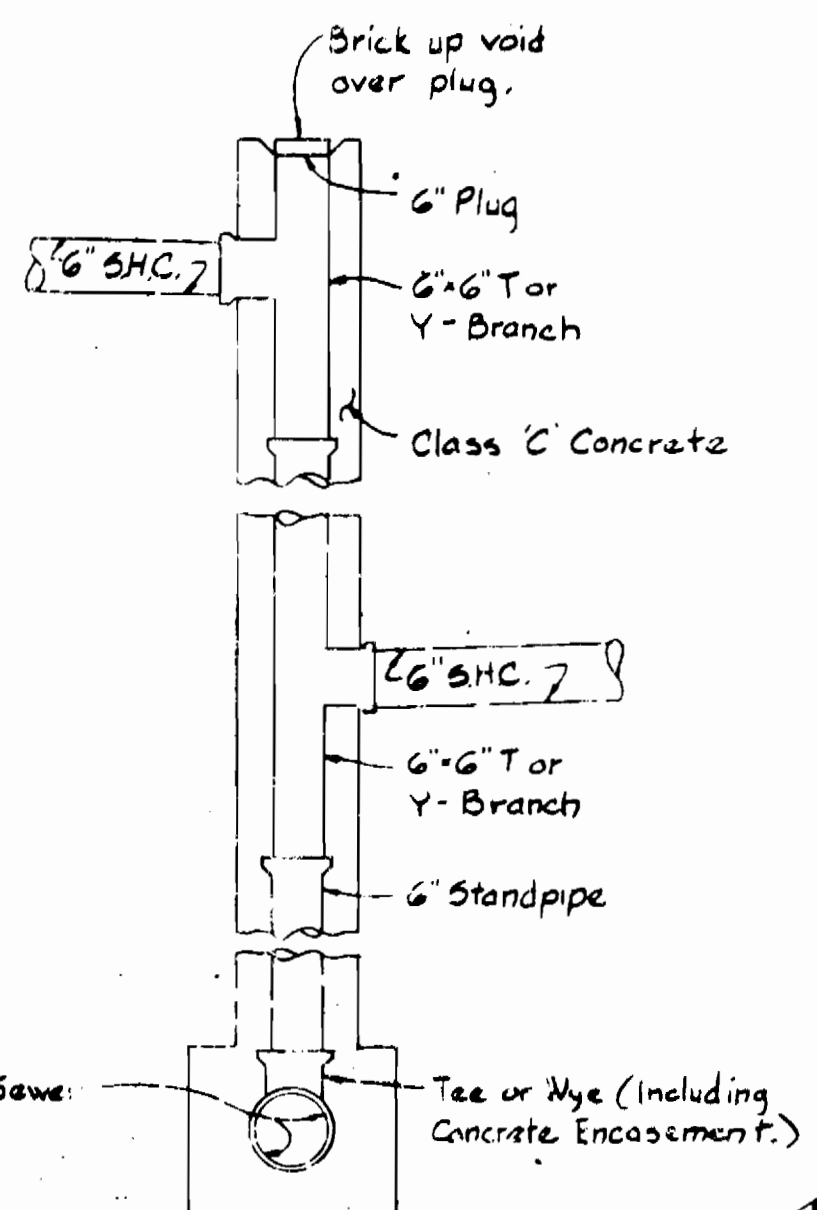
DRAWING NO. 2 OF 4 SCALE AS SHOWN
 AS-BUILT JULY, 1983
 April 20, 1981



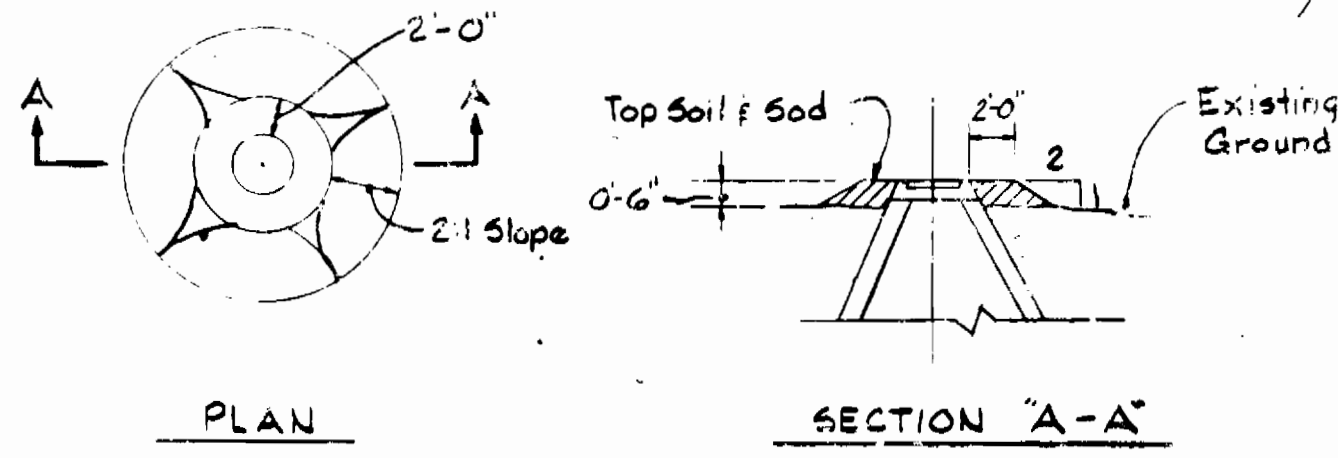
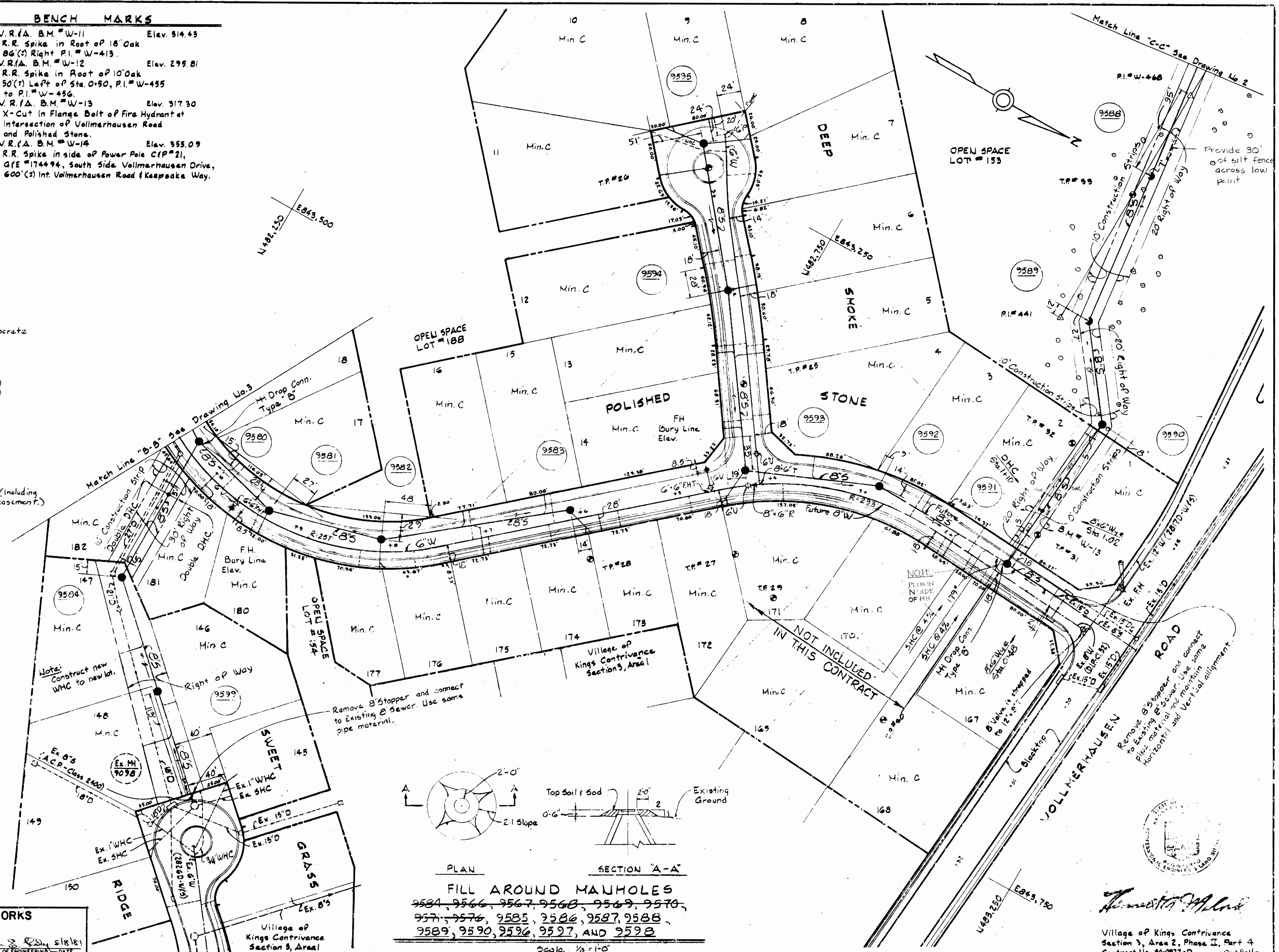
Robert M. Reardon
 Village of Kings Contrivance
 Section 3, Area 2, Phase II, Part 1
 Contract No. 30-0972-D - 2nd Fall

BENCH MARKS

W.R.A. B.M. #W-11 Elev. 314.43
 R.R. Spike in Root of 18" Oak
 86' (?) Right P.I. #W-413
 W.R.A. B.M. #W-12 Elev. 295.81
 R.R. Spike in Root of 10" Oak
 50' (?) Left of Sta. 0+50, P.I. #W-455
 to P.I. #W-456
 W.R.A. B.M. #W-13 Elev. 317.30
 X-Cut in Flange Bolt of Fire Hydrant at
 Intersection of Vollmerhausen Road
 and Polished Stone
 W.R.A. B.M. #W-14 Elev. 355.09
 R.R. Spike in side of Power Pole C/P #21,
 G/E #174494, South Side Vollmerhausen Drive,
 600' (?) Int. Vollmerhausen Road & Keapsake Way.



DETAIL OF DOUBLE DROP HOUSE CONNECTION
 Scale: 1/2" = 1'-0"



FILL AROUND MANHOLES
 9584, 9566, 9567, 9568, 9569, 9570,
 9571, 9576, 9585, 9586, 9587, 9588,
 9589, 9590, 9596, 9597, AND 9598
 Scale: 1/8" = 1'-0"

DEPARTMENT OF PUBLIC WORKS
 HOWARD COUNTY, MARYLAND
 Chief-Engineer
 Whitman, Rejardt & Associates
 ENGINEERS
 2315 ST. PAUL ST.
 BALTIMORE, MARYLAND

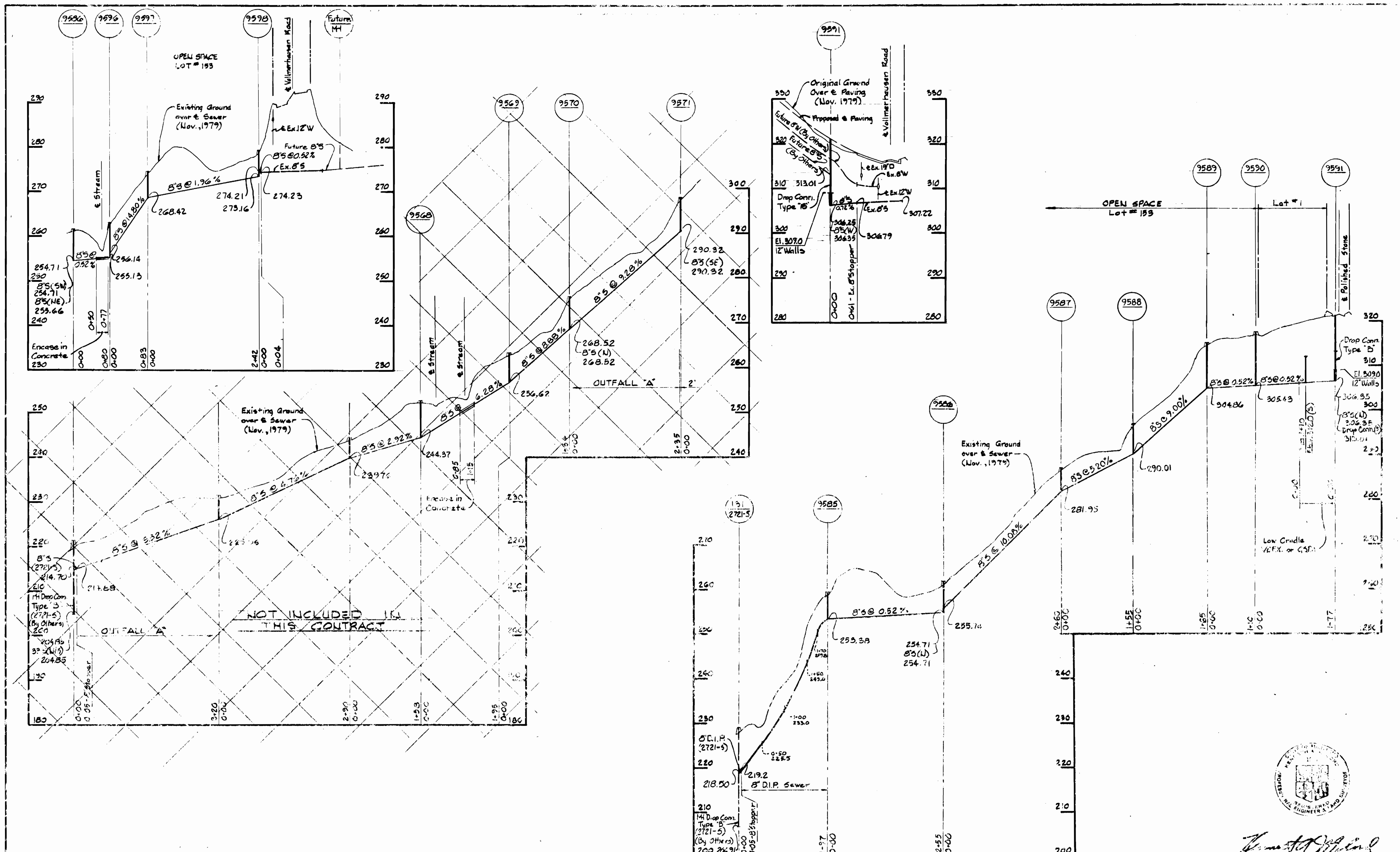
DEPARTMENT OF PUBLIC WORKS
 HOWARD COUNTY, MARYLAND
 Director of Public Works

CONTRACT NO. 30-0972-D

PLAN & DETAILS OF SEWER MAINS

COLUMBIA VILLAGE OF KINGS CONTRIVANCE ELECTION DISTRICT GUILFORD NO. 6

DRAWING NO. 3 OF 4 SCALE AS SHOWN



DEPARTMENT OF PUBLIC WORKS
 HOWARD COUNTY, MARYLAND
 Chief - Bureau of Utilities - DATE
 Chief - Bureau of Engineering - DATE
WHITMAN, REQUARDT & ASSOCIATES
 ENGINEERS
 2315 ST. PAUL ST.
 BALTIMORE, MARYLAND

DEPARTMENT OF PUBLIC WORKS
 HOWARD COUNTY, MARYLAND
 Chief - Land Development Division - DATE
 Director of Public Works - DATE

CONTRACT NO. 30-0972-D

PROFILES OF
 SEWER MAINS

COLUMBIA
 VILLAGE OF KINGS CONTRIVANCE
 ELECTION DISTRICT GUILFORD NO. 6

DRAWING NO. 4 OF 4
 SCALE H:V = 100'
 V:1" = 10'



Thomas J. Quinn

Village of Kings Contrivance
 Section 3, Area 2, Phase II, Part 4
 Contract No. 30-0972-D - Outfall