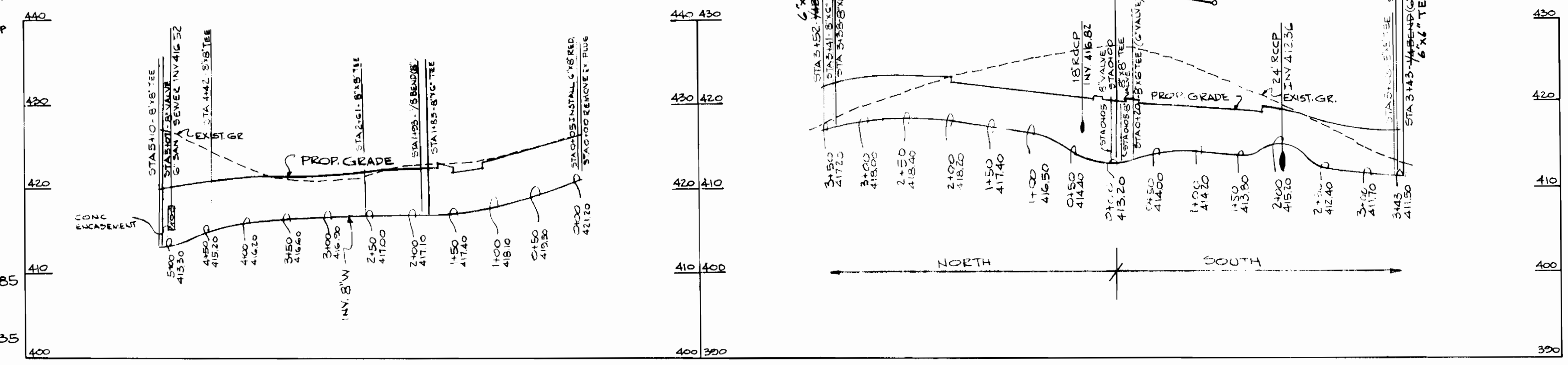


WATER CODE FOR COUNTY USE
 WATER No. G.O.Z
 TYPE OF BUILDINGS - WAREHOUSE & OFFICE
 NO. OF LOTS - 1
 NO. OF WATER HOUSE CONNECTIONS 4

GENERAL NOTES

- APPROXIMATE LOCATION OF EXISTING MAINS ARE SHOWN. THE CONTRACTOR SHALL TAKE ALL NECESSARY PRECAUTIONS TO PROTECT EXISTING MAINS & SERVICES & MAINTAIN UNINTERRUPTED SUPPLY. ANY DAMAGE INCURRED SHALL BE REPAIRED IMMEDIATELY.
- ALL HORIZ. CONTROLS ARE BASED ON MARYLAND STATE COORDINATES.
- ALL VERT. CONTROLS ARE BASED ON USGS DATUM.
- ALL PIPE ELEV'S SHOWN ARE INVERT ELEVATIONS.
- CLEAR ALL UTILITIES BY A MIN OF 6' CLEAR ALL POLES 2'-0" MIN. OR TUNNEL AS REQUIRED.
- FOR ALL STD. DETAILS SEE STANDARDS BOUND IN SPECIFICATIONS.
- CONTRACTORS SHALL NOTIFY THE FOLLOWING UTILITIES AND AGENCIES AT LEAST FIVE (5) DAYS BEFORE STARTING WORK ON THESE PLANS.
 CUSTOMER SERVICE 685-0123
 CIP TELEPHONE CO. 725-9966
 AMERICAN TELEPHONE & TELEGRAPH CABLE LOCATION DIVISION 301-393-3553.
 BUREAU OF UTILITIES HOWARD COUNTY 992-2366
- CONTRACTOR SHALL LOCATE EXISTING UTILITIES IN ADVANCE OF CONSTRUCTION OPERATIONS IN THE VICINITY OF PROPOSED UTILITIES.
- CONTRACTOR SHALL REMOVE TREES, STUMPS & ROOTS ALONG LINE OF EXCAVATION AS DIRECTED BY THE ENGINEER. PAYMENT FOR SUCH REMOVAL SHALL BE INCLUDED IN THE UNIT PRICE BID FOR EXCAVATION & BACKFILL FOR WATER MAINS.
- TREES ARE TO BE PROTECTED FROM DAMAGE TO MAXIMUM EXTENT. TREES LOCATED WITHIN THE CONSTRUCTION STRIP ARE NOT TO BE REMOVED OR DAMAGED BY THE CONTRACTOR.
- PLACE REGULATION "MEN WORKING" & WARNING SIGNS AS REQUIRED TO COMPLY WITH MD. STATE HIGHWAY ADMINISTRATION MANUAL OF TRAFFIC CONTROL FOR HIGHWAY CONSTRUCTION & MAINTENANCE OPERATIONS.
- ALL WATER MAINS TO BE C.I.P. OR D.I.P. UNLESS OTHERWISE NOTED.
- TOP OF ALL WATER MAINS TO HAVE 3/2' COVER UNLESS OTHERWISE NOTED.
- ALL VALVES SHALL BE STRAPPED TO TEES IN ACCORDANCE WITH STANDARD DETAILS.
- BLOCK ALL FITTINGS WITH CONCRETE. SEE STANDARDS BOUND IN SPECIFICATIONS.
- BURY LINE ELEVATIONS ON FIRE HYDRANT SHALL BE TO THE ELEVATIONS SHOWN ON THE DRAWINGS. ALL FIRE HYDRANTS SHALL BE STRAPPED & BUTTRESSED IN CONCRETE IN ACCORDANCE WITH THE STANDARD DETAILS. SOIL AROUND THE FIRE HYDRANTS TO BE COMPACTED IN ACCORDANCE WITH SECTION 5-15 OF THE STD. SPECS.
- ALL WATER HOUSE CONNECTIONS SHALL BE METER SETTING FOR INSIDE.
- THE CONTRACTOR SHALL NOT OPERATE ANY WATER MAINS VALVES ON THE EXISTING SYSTEM.

QUANTITIES			
ITEM	ESTIMATED	AS-BUILT	SUPPLIER
8" WATER	1200	1245	D.I.P. GRIFFIN
6" WATER	90	86	D.I.P. GRIFFIN
B VALVES	6	7	AIP
FIRE HYDRANT	4	4	AMER. DARL.
6" VALVES	4	4	AIP
6" SEWER	140		PVC SDR 35



BM * LW-2 ELEV 424.733
 R.R. SPIKE IN ROOT OF 30' OAK 340'
 SOUTHEAST OF RED BRANCH RD & STA 2885

BM * R-18
 R.R. SPIKE IN ROOT OF 30' MAPLE 270'
 NORTH OF RED BRANCH ROAD & STA 1435

DEPARTMENT OF PUBLIC WORKS
 HOWARD COUNTY, MARYLAND

John F. Newman 9/3/81
 DIRECTOR OF PUBLIC WORKS - DATE CHIEF, BUREAU OF ENGINEERING - DATE

Robert M. Brown 9/1/81
 CHIEF, BUREAU OF UTILITIES - DATE CHIEF, LAND DEVELOPMENT DIVISION - DATE

HUDKINS ASSOCIATES INC.
 ENGINEERS & LAND SURVEYORS
 101 SHELL BUILDING
 200 E. JOPPA RD. TOWSON, MD. 21204

REVIEWED FOR HOWARD SOIL CONSERVATION DISTRICT AND MEETS TECHNICAL REQUIREMENTS

John J. Sakane 8-28-81
 SIGNATURE DATE
 U.S. SOIL CONSERVATION SERVICE

THIS DEVELOPMENT PLAN IS APPROVED FOR SOIL EROSION AND SEDIMENT CONTROL BY THE HOWARD COUNTY CONSERVATION DISTRICT.

APPROVED:
Wes Karp 8-28-81
 HOWARD S.C.D. DATE

NOTE:
 SEDIMENT CONTROL MEASURES FOR THIS CONTRACT WILL BE IMPLEMENTED IN ACCORDANCE WITH ARTICLE 15 OF THE STANDARD SPECIFICATIONS AND SDP 81-86

Howard H. Hume
 1/22/81

CONTRACT NO. 44-0966-D

PLAN & PROFILE OF WATER MAIN

COLUMBIA PARCELS 'C' AND 'D' EQUESTRIAN CENTER

2ND ELECTION DISTRICT
 HOWARD COUNTY, MARYLAND

DRAWING No 1 OF 1

SCALE: PLAN 1"=50' PROFILE 1"=10' VERT. 1"=10'

DATE 1-2-81

AS-BUILT OCT. 7, 1982