

WATER CODE - F-08  
SEWER CODE - 5830000

Wastewater Treatment	Savage
No. of S.H.C.'s	92
No. of W.H.C.'s	92
Type of Lots	Single Family
No. of Lots	92

QUANTITIES			
ITEM	BID	AS-BUILT	MATERIAL/SUPPLIER
8" S	6,005 L.F.	6,005 L.F.	E.T.I.
Manholes	330 V.F.	330 V.F.	Atlantic Precast
8" Water	2660 L.F.	2,725 L.F.	cl 32 DIP Griffin
6" Water	2080 L.F.	2,080 L.F.	" " "
8" Valves	4	4	Mueller
6" V (Excluding F.H.V.)	4	4	Mueller
Fire Hydrants	7	7	Mueller

# CONTRACT NO. 24-0964 D

## DORSEY HALL

### HOWARD COUNTY, MARYLAND DEPARTMENT OF PUBLIC WORKS



*Thomas J. ...* Dorsey Hall - Phase II  
Section I Area 5  
Contract No. 24-0964 C.

REVIEWED FOR HOWARD SOIL CONSERVATION DISTRICT AND MEETS TECHNICAL REQUIREMENTS  
SIGNATURE \_\_\_\_\_ DATE \_\_\_\_\_  
U.S. SOIL CONSERVATION SERVICE

Sediment Control Measures for this Contract will be implemented in accordance with Article 15 of the Specifications and Road Construction Plan F-81-27

This Development Plan is approved for Soil Erosion and Sediment Control by the Howard County Conservation District  
APPROVED: *William J. ...* 3-6-81  
HOWARD S.C.D. DATE

DEPARTMENT OF PUBLIC WORKS  
HOWARD COUNTY, MARYLAND  
*Robert ...* 3-12-81 *William ...* 3-12-81  
CHIEF BUREAU OF UTILITIES - DATE CHIEF BUREAU OF ENGINEERING - DATE

WHITMAN, REQUARDT & ASSOCIATES  
ENGINEERS  
1304 ST. PAUL ST.  
BALTIMORE, MARYLAND

DEPARTMENT OF PUBLIC WORKS  
HOWARD COUNTY, MARYLAND  
*William E. ...* 3-13-81 *William ...* 3-12-81  
DIRECTOR OF PUBLIC WORKS - DATE CHIEF LAND DEVELOPMENT DIVISION - DATE

CONTRACT NO. 24-0964 D

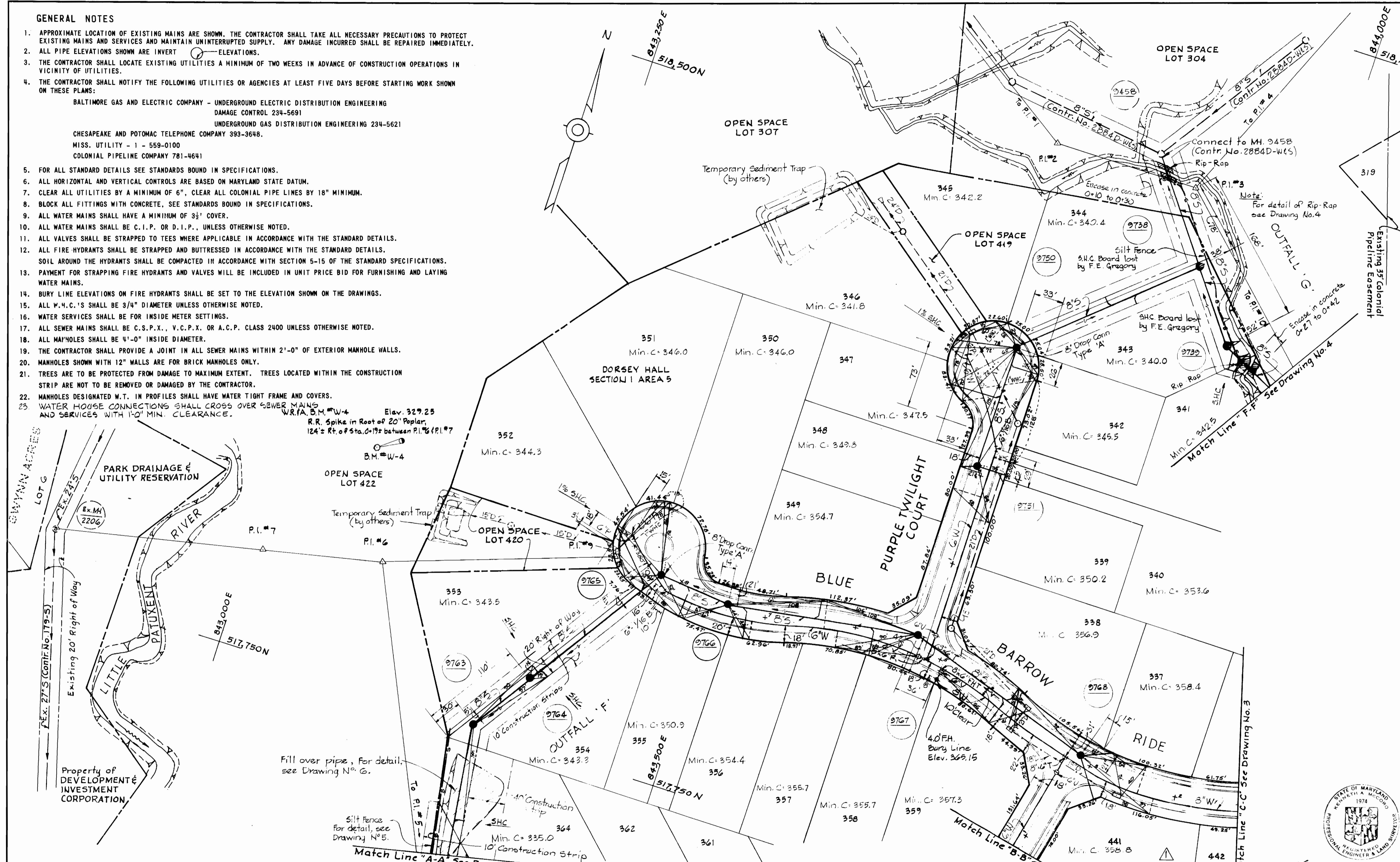
LOCATION MAP OF WATER & SEWER MAINS

ELECTION DISTRICT  
ELLCOTT CITY NO. 2

DRAWING NO. 1 OF 6	SCALE 1"=600'
--------------------	---------------

**GENERAL NOTES**

- APPROXIMATE LOCATION OF EXISTING MAINS ARE SHOWN. THE CONTRACTOR SHALL TAKE ALL NECESSARY PRECAUTIONS TO PROTECT EXISTING MAINS AND SERVICES AND MAINTAIN UNINTERRUPTED SUPPLY. ANY DAMAGE INCURRED SHALL BE REPAIRED IMMEDIATELY.
- ALL PIPE ELEVATIONS SHOWN ARE INVERT ELEVATIONS.
- THE CONTRACTOR SHALL LOCATE EXISTING UTILITIES A MINIMUM OF TWO WEEKS IN ADVANCE OF CONSTRUCTION OPERATIONS IN VICINITY OF UTILITIES.
- THE CONTRACTOR SHALL NOTIFY THE FOLLOWING UTILITIES OR AGENCIES AT LEAST FIVE DAYS BEFORE STARTING WORK SHOWN ON THESE PLANS:  
 BALTIMORE GAS AND ELECTRIC COMPANY - UNDERGROUND ELECTRIC DISTRIBUTION ENGINEERING  
 DAMAGE CONTROL 234-5691  
 UNDERGROUND GAS DISTRIBUTION ENGINEERING 234-5621  
 CHESAPEAKE AND POTOMAC TELEPHONE COMPANY 393-3648.  
 MISS. UTILITY - 1 - 559-0100  
 COLONIAL PIPELINE COMPANY 781-4641
- FOR ALL STANDARD DETAILS SEE STANDARDS BOUND IN SPECIFICATIONS.
- ALL HORIZONTAL AND VERTICAL CONTROLS ARE BASED ON MARYLAND STATE DATUM.
- CLEAR ALL UTILITIES BY A MINIMUM OF 6", CLEAR ALL COLONIAL PIPE LINES BY 18" MINIMUM.
- BLOCK ALL FITTINGS WITH CONCRETE, SEE STANDARDS BOUND IN SPECIFICATIONS.
- ALL WATER MAINS SHALL HAVE A MINIMUM OF 3 1/2' COVER.
- ALL WATER MAINS SHALL BE C.I.P. OR D.I.P., UNLESS OTHERWISE NOTED.
- ALL VALVES SHALL BE STRAPPED TO TEES WHERE APPLICABLE IN ACCORDANCE WITH THE STANDARD DETAILS.
- ALL FIRE HYDRANTS SHALL BE STRAPPED AND BUTTRESSED IN ACCORDANCE WITH THE STANDARD DETAILS. SOIL AROUND THE HYDRANTS SHALL BE COMPACTED IN ACCORDANCE WITH SECTION 5-15 OF THE STANDARD SPECIFICATIONS.
- PAYMENT FOR STRAPPING FIRE HYDRANTS AND VALVES WILL BE INCLUDED IN UNIT PRICE BID FOR FURNISHING AND LAYING WATER MAINS.
- BURY LINE ELEVATIONS ON FIRE HYDRANTS SHALL BE SET TO THE ELEVATION SHOWN ON THE DRAWINGS.
- ALL W.H.C.'S SHALL BE 3/4" DIAMETER UNLESS OTHERWISE NOTED.
- WATER SERVICES SHALL BE FOR INSIDE METER SETTINGS.
- ALL SEWER MAINS SHALL BE C.S.P.X., V.C.P.X. OR A.C.P. CLASS 2400 UNLESS OTHERWISE NOTED.
- ALL MANHOLES SHALL BE 4'-0" INSIDE DIAMETER.
- THE CONTRACTOR SHALL PROVIDE A JOINT IN ALL SEWER MAINS WITHIN 2'-0" OF EXTERIOR MANHOLE WALLS.
- MANHOLES SHOWN WITH 12" WALLS ARE FOR BRICK MANHOLES ONLY.
- TREES ARE TO BE PROTECTED FROM DAMAGE TO MAXIMUM EXTENT. TREES LOCATED WITHIN THE CONSTRUCTION STRIP ARE NOT TO BE REMOVED OR DAMAGED BY THE CONTRACTOR.
- MANHOLES DESIGNATED W.T. IN PROFILES SHALL HAVE WATER TIGHT FRAME AND COVERS.
- WATER HOUSE CONNECTIONS SHALL CROSS OVER SEWER MAINS AND SERVICES WITH 1'-0" MIN. CLEARANCE.



*Kenneth J. Mink*  
 Dorsey Hall - Phase II  
 Section I Area 5  
 Contract No. 24-09640

DEPARTMENT OF PUBLIC WORKS  
 HOWARD COUNTY, MARYLAND  
*Robert J. Beatty* 3-12-81  
 CHIEF-BUREAU OF UTILITIES - DATE  
*William E. Reilly* 3-13-81  
 CHIEF-BUREAU OF ENGINEERING - DATE  
**WHITMAN, REQUARDT & ASSOCIATES**  
 ENGINEERS  
 1304 ST. PAUL ST.  
 BALTIMORE, MARYLAND

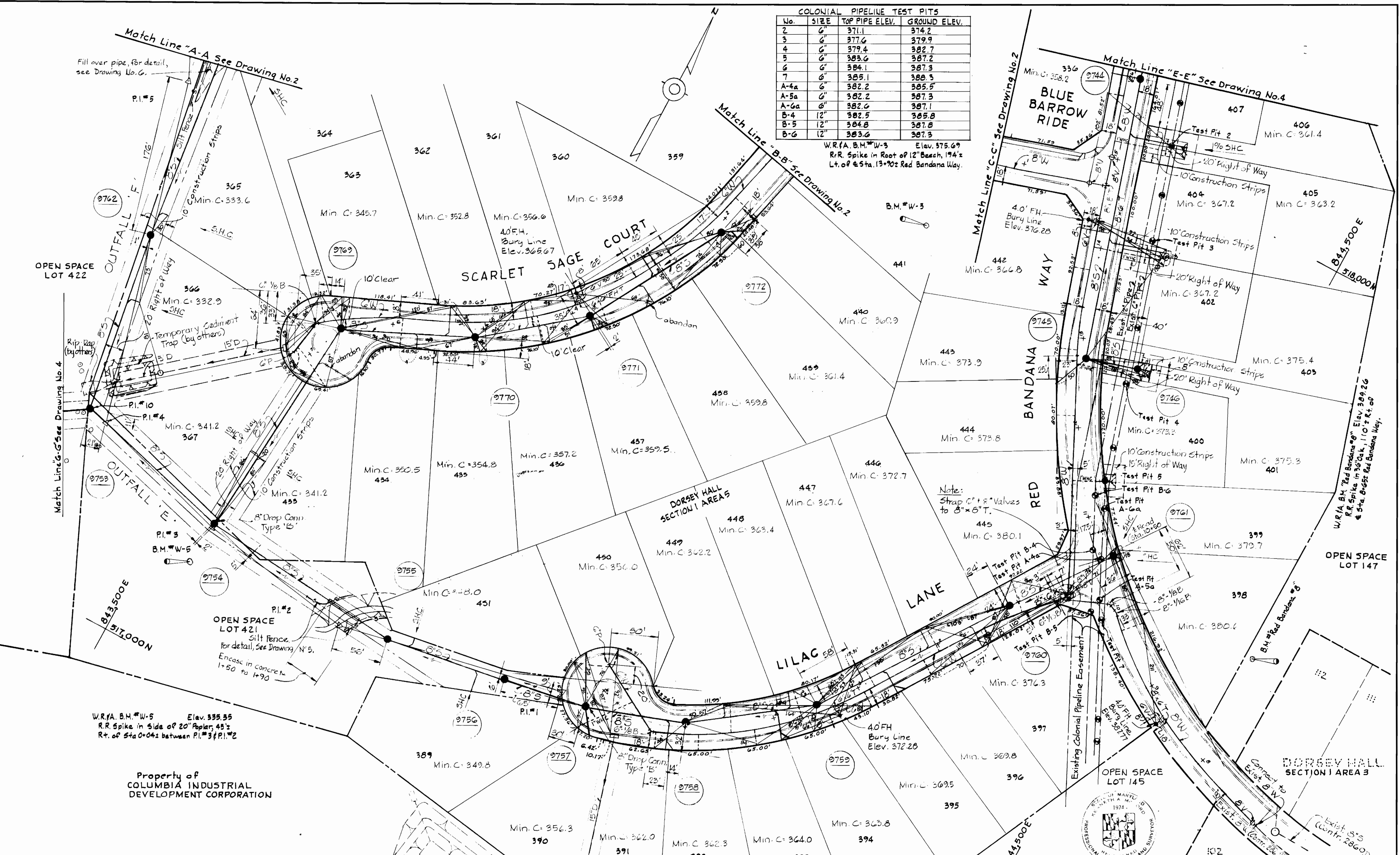
DEPARTMENT OF PUBLIC WORKS  
 HOWARD COUNTY, MARYLAND  
*William E. Reilly* 3-13-81  
 DIRECTOR OF PUBLIC WORKS - DATE  
*William E. Reilly* 3-13-81  
 CHIEF - LAND DEVELOPMENT DIVISION - DATE

No.	Date	By	Revision
1	6/25/81	JRK	Changed Lot Nos. (441 & 442)

**CONTRACT NO. 24-0964D**  
**PLAN OF WATER & SEWER MAINS**

ELECTION DISTRICT  
 ELLICOTT CITY NO. 2

<b>DRAWING NO.</b> 2	<b>SCALE</b> 1" = 50'
<b>OF</b> 6	



COLONIAL PIPELINE TEST PITS			
No.	SIZE	TOP PIPE ELEV.	GROUND ELEV.
2	6"	371.1	374.2
3	6"	377.4	379.9
4	6"	379.4	382.7
5	6"	383.6	387.2
6	6"	384.1	387.3
7	6"	385.1	388.3
A-4a	6"	382.2	385.5
A-5a	6"	382.2	387.3
A-6a	6"	382.6	387.1
B-4	12"	382.5	385.8
B-5	12"	384.8	387.8
B-6	12"	383.6	387.3

W.R.F.A. B.M. #W-3 Elev. 375.69  
R.R. Spike in Root of 12" Beach, 194's  
Lt. of Sta. 13+90± Red Bandana Way.

Fill over pipe, for detail, see Drawing No. G.

Match Line "A-A" See Drawing No. 2

Match Line "B-B" See Drawing No. 2

Match Line "C-C" See Drawing No. 2

Match Line "E-E" See Drawing No. 4

OPEN SPACE LOT 422

Match Line "G-G" See Drawing No. 4

OPEN SPACE LOT 421  
Silt Fence, for detail, See Drawing N° 5.  
Encase in concrete 1'-50 to 1'-90

W.R.F.A. B.M. #W-5 Elev. 335.35  
R.R. Spike in Side of 20' Right of Way, 48's  
Rt. of Sta. 0+04± between P.I. #3 & P.I. #2

Property of COLUMBIA INDUSTRIAL DEVELOPMENT CORPORATION

Note: Strap C' & R' Valves to 8" x 6" T.



Dorsey Hall-Phase II Section I Area 5 Contract No. 24-0964 D

No.	Date	By	Revision
1	6/25/80	JRC	Changed Lots 433 Thru 451

DEPARTMENT OF PUBLIC WORKS HOWARD COUNTY, MARYLAND Whitman, Requardt & Associates ENGINEERS 1304 ST. PAUL ST. BALTIMORE, MARYLAND	DEPARTMENT OF PUBLIC WORKS HOWARD COUNTY, MARYLAND Director of Public Works: [Signature] DATE: 3-13-81	CONTRACT NO. 24-0964 D	PLAN OF WATER & SEWER MAINS	ELECTION DISTRICT ELLICOTT CITY NO. 2	DRAWING NO. 3 OF 6	SCALE 1"=50'
					W. O. 7423	FEB. 28, 1981

**COLONIAL PIPELINE TEST PITS**

No.	SIZE	TOP PIPE ELEVATION	GROUND ELEVATION
A-7a	6"	351.9	355.2
A-8a	6"	353.2	356.2
A-9a	6"	348.5	352.7
B-7	12"	351.4	354.7
B-8	12"	352.4	355.9
B-9	12"	348.7	351.3

W.R.I.A. B.M. "Red Bandana 20" Elev. 346.65  
R.R. Spike in 20' Oak, 205'± Lt. of Sta. 19+70± Red Bandana Way.

B.M. "Red Bandana 20"

OPEN SPACE LOT 304  
Temporary Sediment Trap (by others)

Match Line "F-F" See Drawing No. 2  
Rip-Rap (by others)  
Temporary Sediment Trap (by others)

Temporary Sediment Trap (by others)

340  
Min. C = 353.6

Match Line "E-E" See Drawing No. 3  
10' Construction Strips  
20' Right of Way  
407  
Min. C = 357.6

W.R.I.A. B.M. "W-2" Elev. 353.83  
R.R. Spike in Root of 18" Maple, 100'± Rt. of Sta. 17+75± Red Bandana Way.

OPEN SPACE LOT 147

W.R.I.A. B.M. "W-1" Elev. 302.52  
R.R. Spike in Root of 8" Locust, 95'± Rt. of Sta. 28+16± Red Bandana Way.

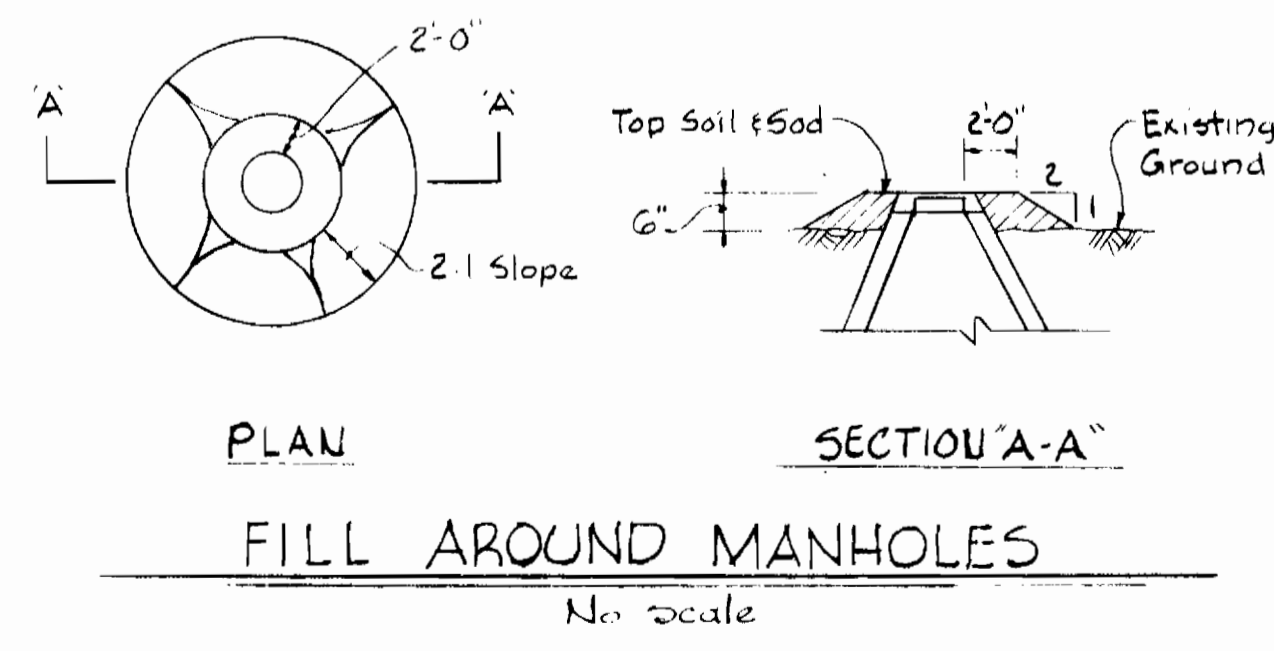
OPEN SPACE LOT 304

RED BANDANA WAY

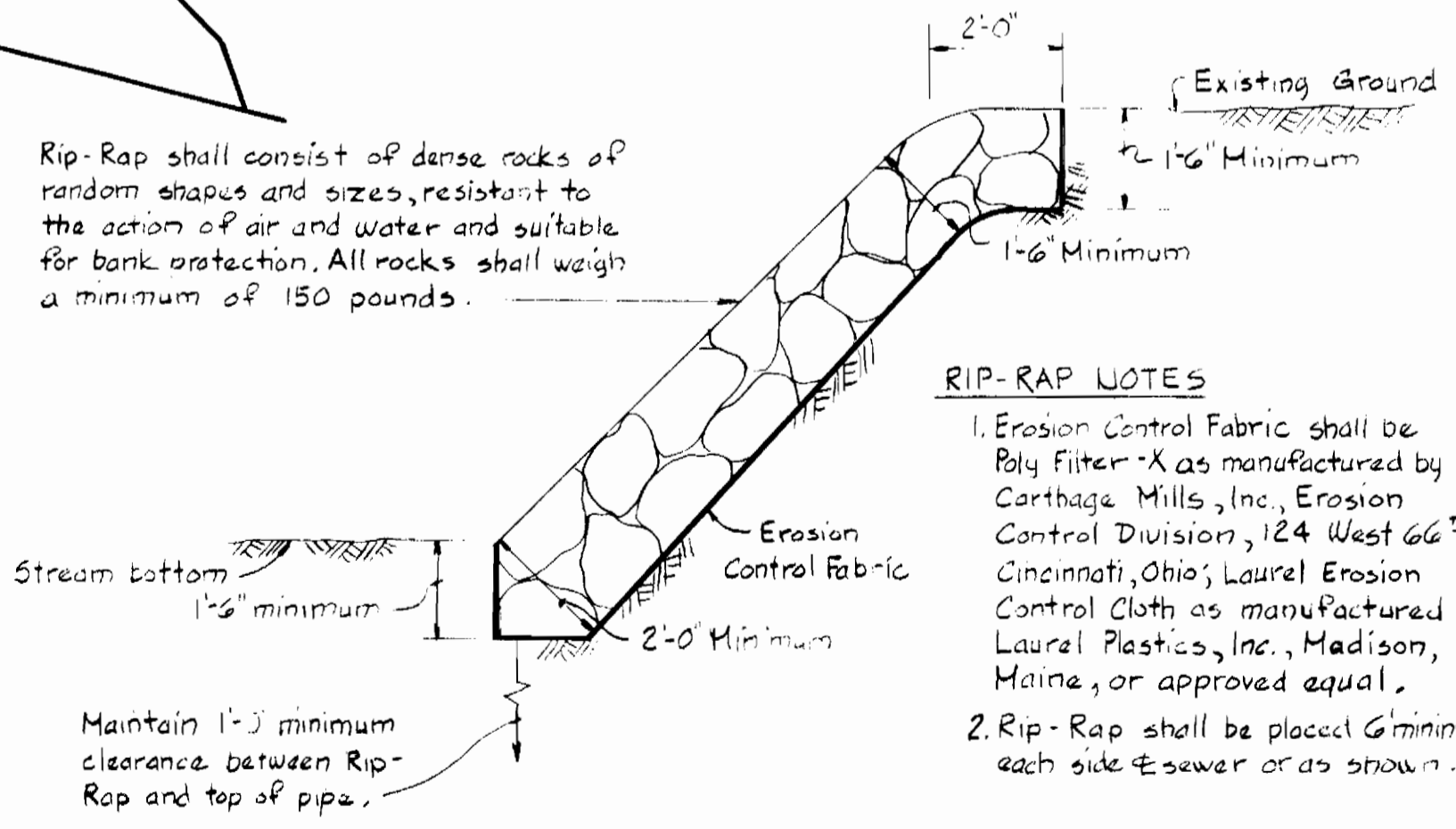
BANDANA WAY

DORSEY HALL SECTION 1 AREA 5

GRAY ROCK DRIVE

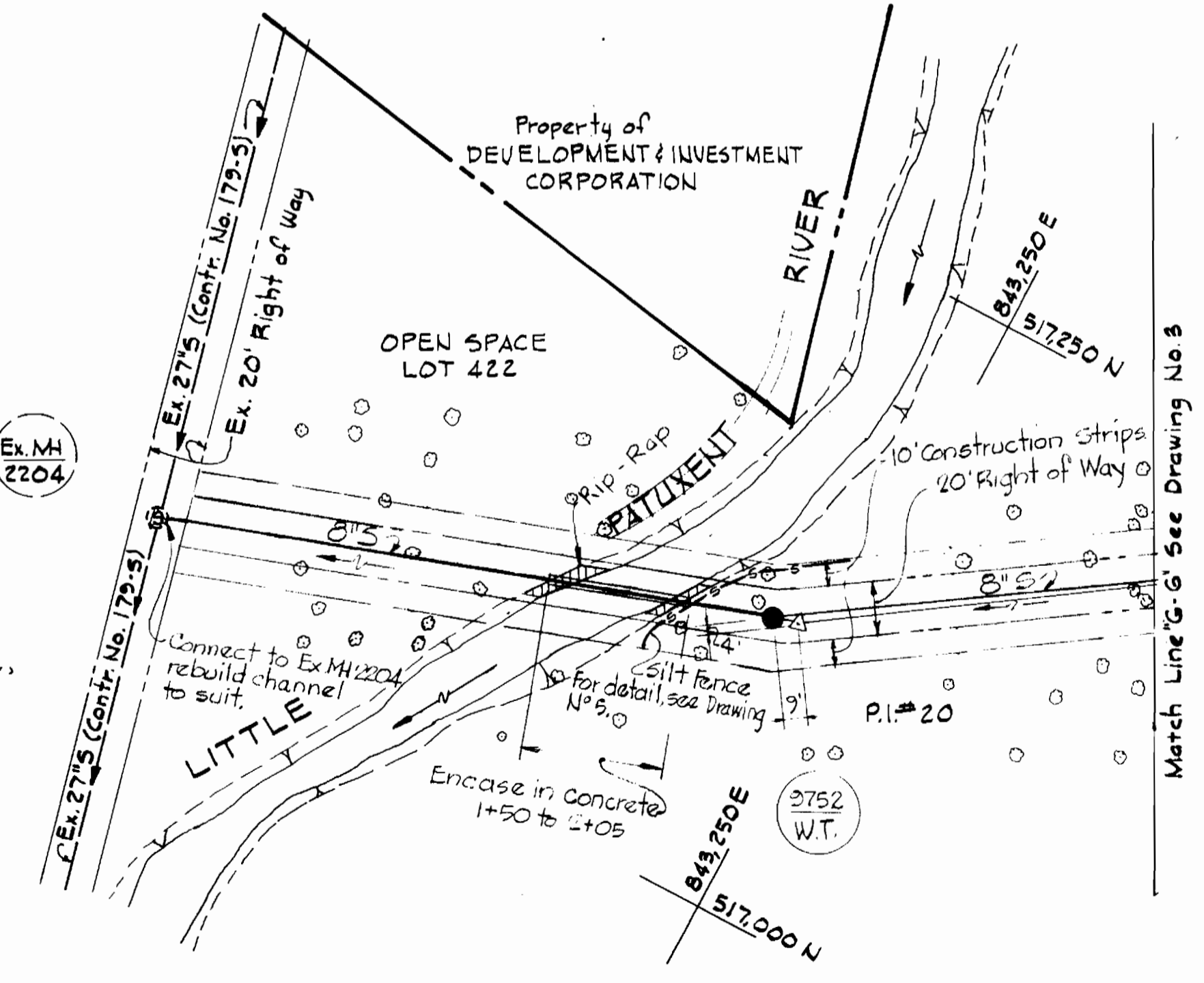


Rip-Rap shall consist of dense rocks of random shapes and sizes, resistant to the action of air and water and suitable for bank protection. All rocks shall weigh a minimum of 150 pounds.



**RIP-RAP NOTES**

- Erosion Control Fabric shall be Poly Filter-X as manufactured by Carthage Mills, Inc., Erosion Control Division, 124 West 66<sup>th</sup> St., Cincinnati, Ohio; Laurel Erosion Control Cloth as manufactured by Laurel Plastics, Inc., Madison, Maine, or approved equal.
- Rip-Rap shall be placed 6" minimum each side of sewer or as shown.



DEPARTMENT OF PUBLIC WORKS  
HOWARD COUNTY, MARYLAND  
R. M. ... 3-12-81  
CHIEF-BUREAU OF UTILITIES - DATE

WHITMAN, REQUARDT & ASSOCIATES  
ENGINEERS  
1304 ST. PAUL ST.  
BALTIMORE, MARYLAND

DEPARTMENT OF PUBLIC WORKS  
HOWARD COUNTY, MARYLAND  
... 3-13-81  
DIRECTOR OF PUBLIC WORKS - DATE

CONTRACT NO. 24-0964D

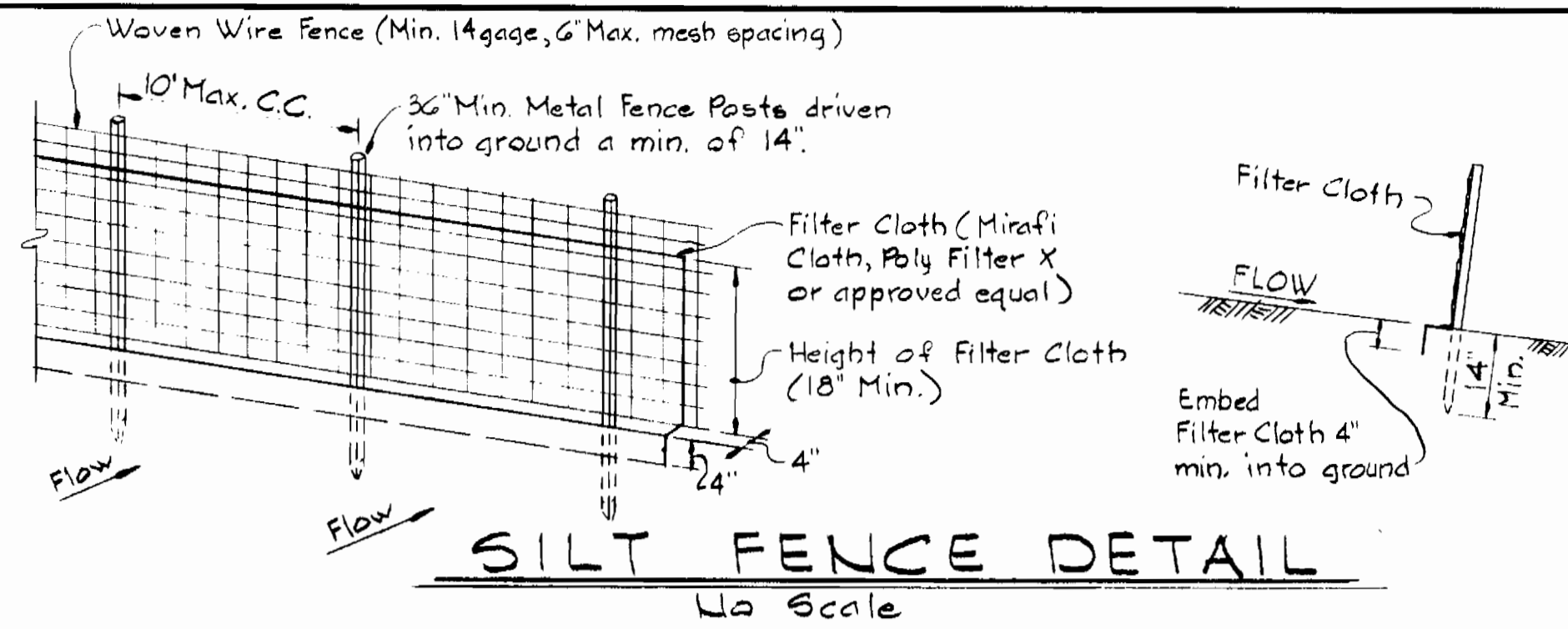
PLAN OF WATER & SEWER MAINS

ELECTION DISTRICT ELLICOTT CITY NO. 2

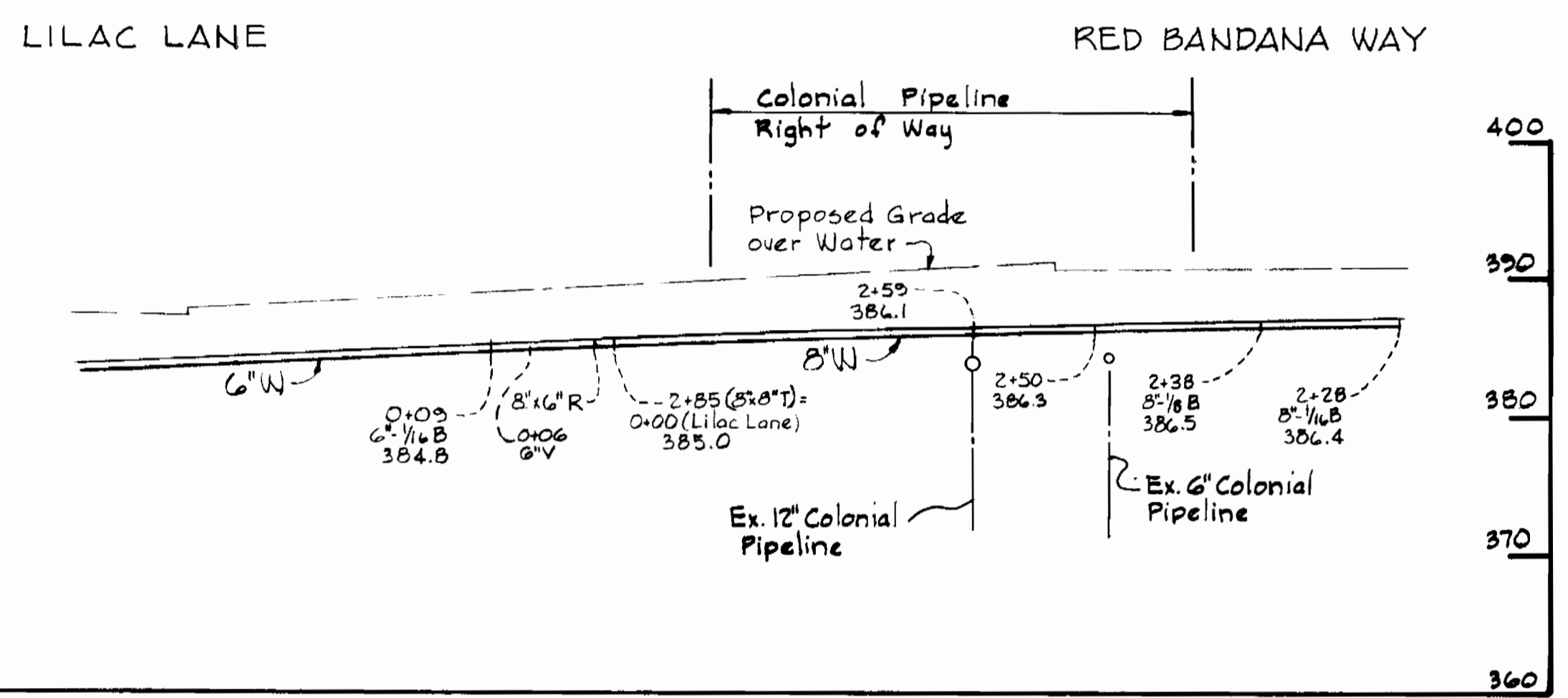
DRAWING NO. 4 OF 6 SCALE AS SHOWN



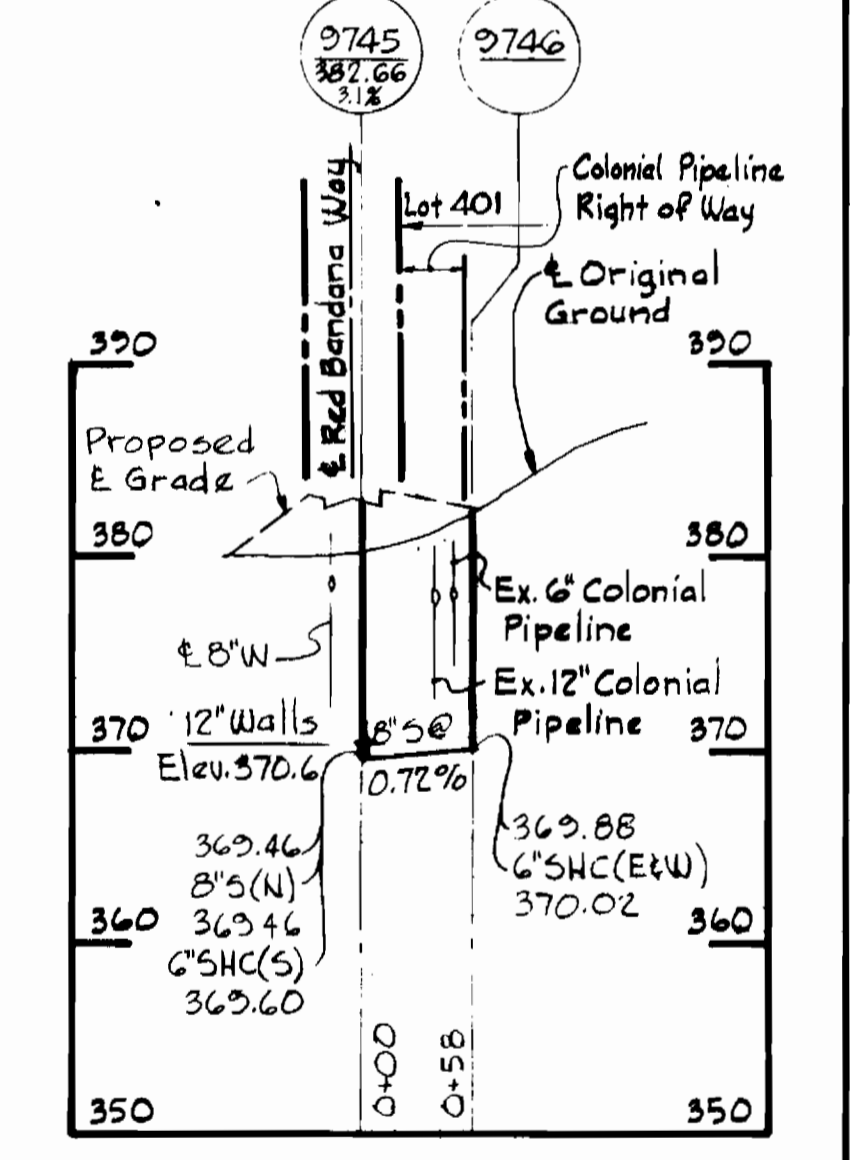
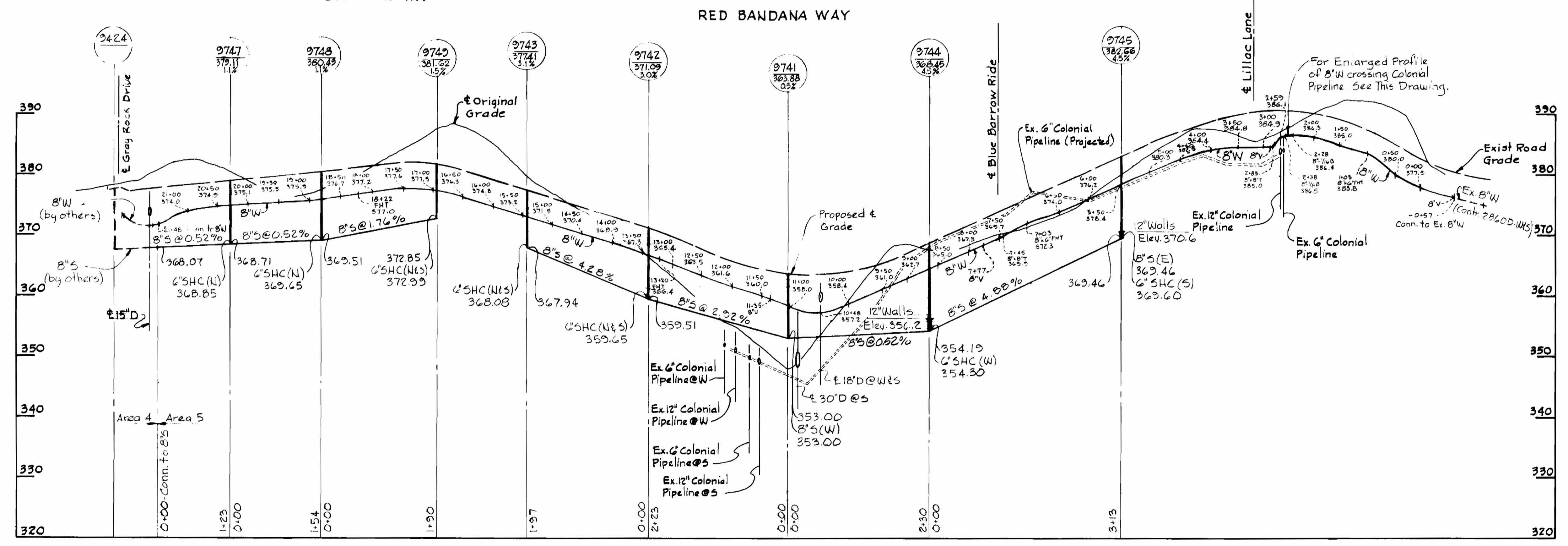
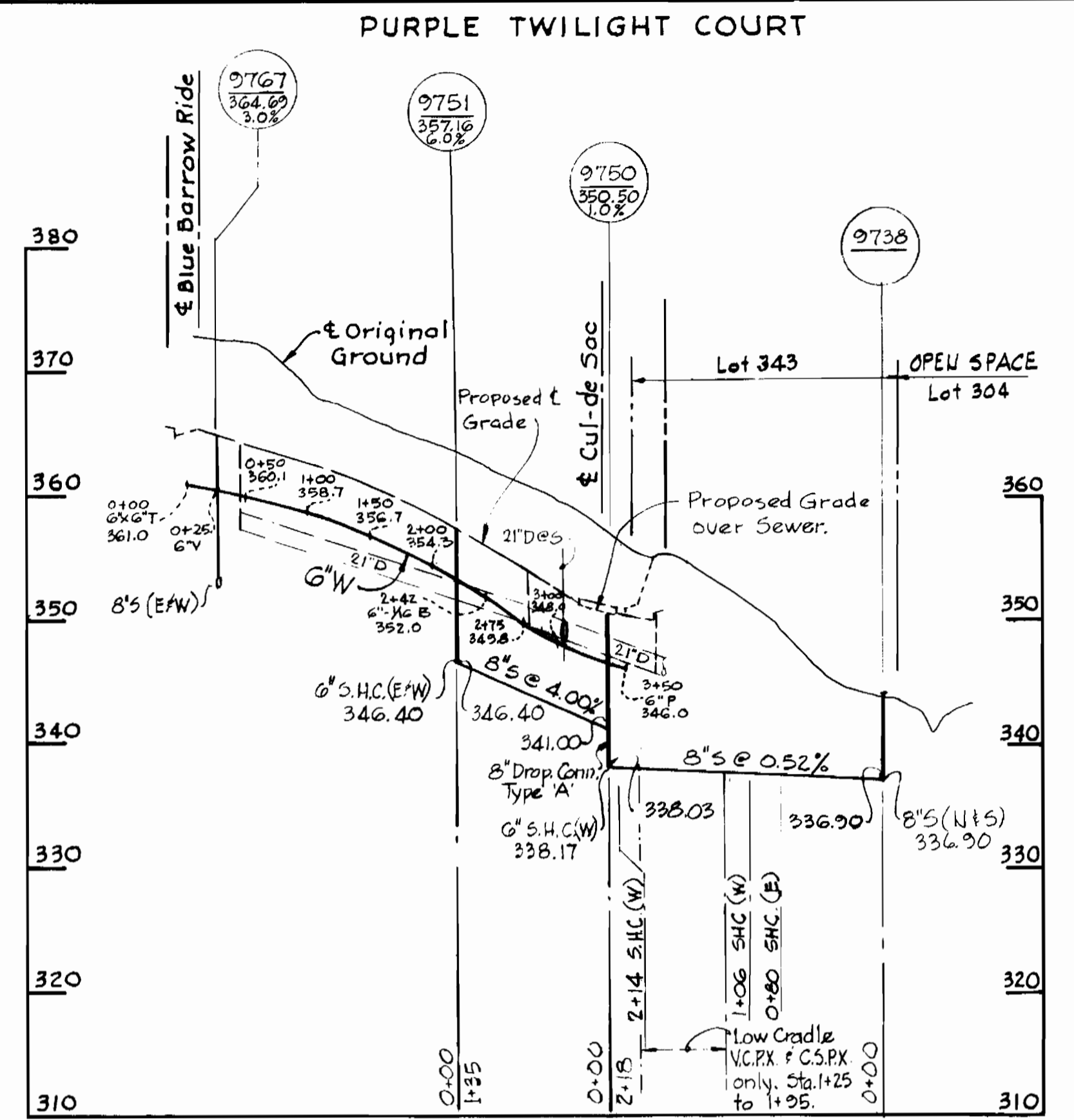
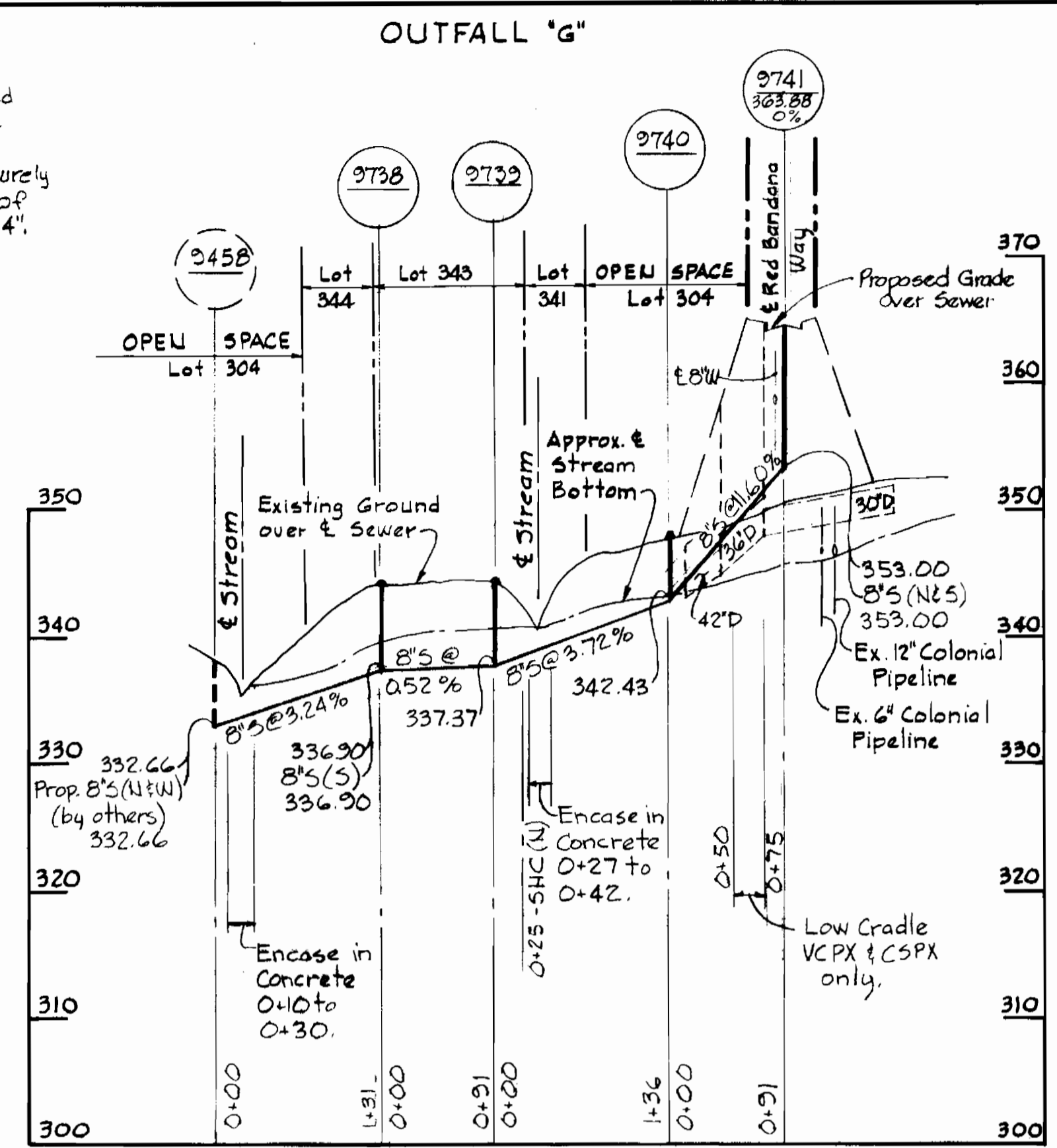
Dorsey Hall - Phase II  
Section 1 Area 5  
Contract No. 24-0964 D



- NOTES:**
1. Waven wire fence to be fastened securely to fence posts by use of wire ties.
  2. Filter Cloth to be fastened securely to waven wire fence by use of wire ties spaced every 24"x24".



**PROPOSED 8" WATER CROSSING COLONIAL PIPELINE**  
Scale: 1"=10' H&V



**8" SEWER CROSSING COLONIAL PIPELINE**

**PROFILES**  
Scale: H: 1"=100'  
V: 1"=10'

**DEPARTMENT OF PUBLIC WORKS**  
HOWARD COUNTY, MARYLAND  
3-12-81  
CHIEF-BUREAU OF UTILITIES-DATE

**WHITMAN, REQUARDT & ASSOCIATES**  
ENGINEERS  
1304 ST. PAUL ST.  
BALTIMORE, MARYLAND

**DEPARTMENT OF PUBLIC WORKS**  
HOWARD COUNTY, MARYLAND  
3-13-81  
CHIEF-LAND DEVELOPMENT DIVISION-DATE

**CONTRACT NO. 24-0964D**

**PROFILES OF WATER & SEWER MAINS**

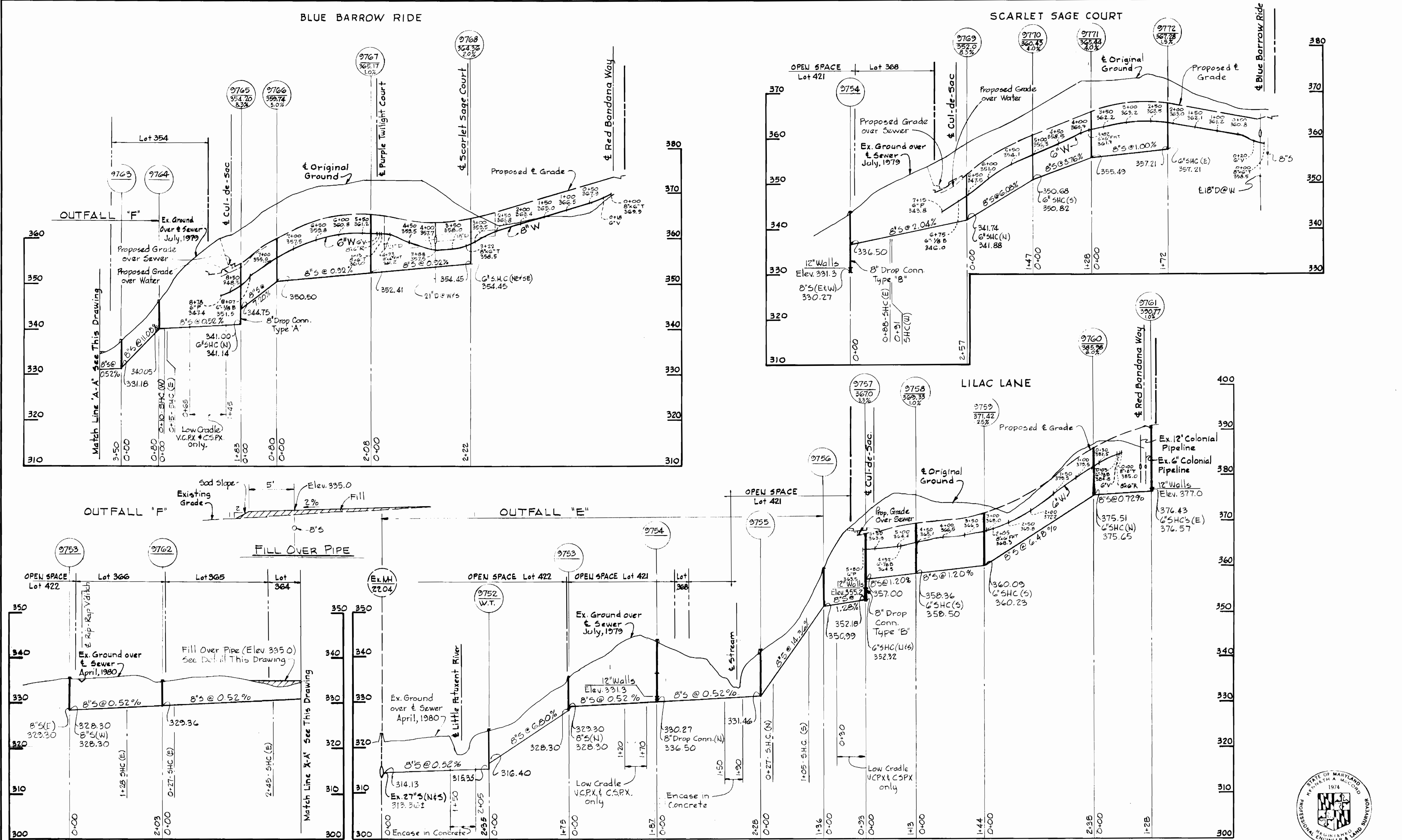
ELECTION DISTRICT  
ELLCOTT CITY NO. 2

**DRAWING NO. 5 OF 6**

**SCALE AS SHOWN**

*Kenneth A. Milrod*  
Dorsey Hall - Phase II  
Section I Area 5  
Contract No. 24-0964D





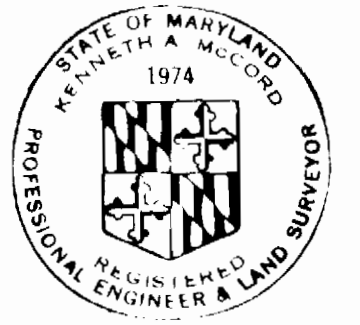
DEPARTMENT OF PUBLIC WORKS  
 HOWARD COUNTY, MARYLAND  
 Chief Bureau of Utilities - DATE  
 Chief Bureau of Engineering - DATE  
**WHITMAN, REQUARDT & ASSOCIATES**  
 ENGINEERS  
 1304 ST. PAUL ST.  
 BALTIMORE, MARYLAND

DEPARTMENT OF PUBLIC WORKS  
 HOWARD COUNTY, MARYLAND  
 Director of Public Works - DATE  
 Chief - Land Development Division - DATE  
**CONTRACT NO. 24-0964 D**

**PROFILES OF WATER & SEWER MAINS**

ELECTION DISTRICT  
 ELLICOTT CITY NO. 2

DRAWING NO. 6 OF 6  
 SCALE AS SHOWN



*Kenneth A. McLeod*  
 Dorsey Hall - Phase V  
 Section 1 Area 5  
 Contract No. 24-0964 D