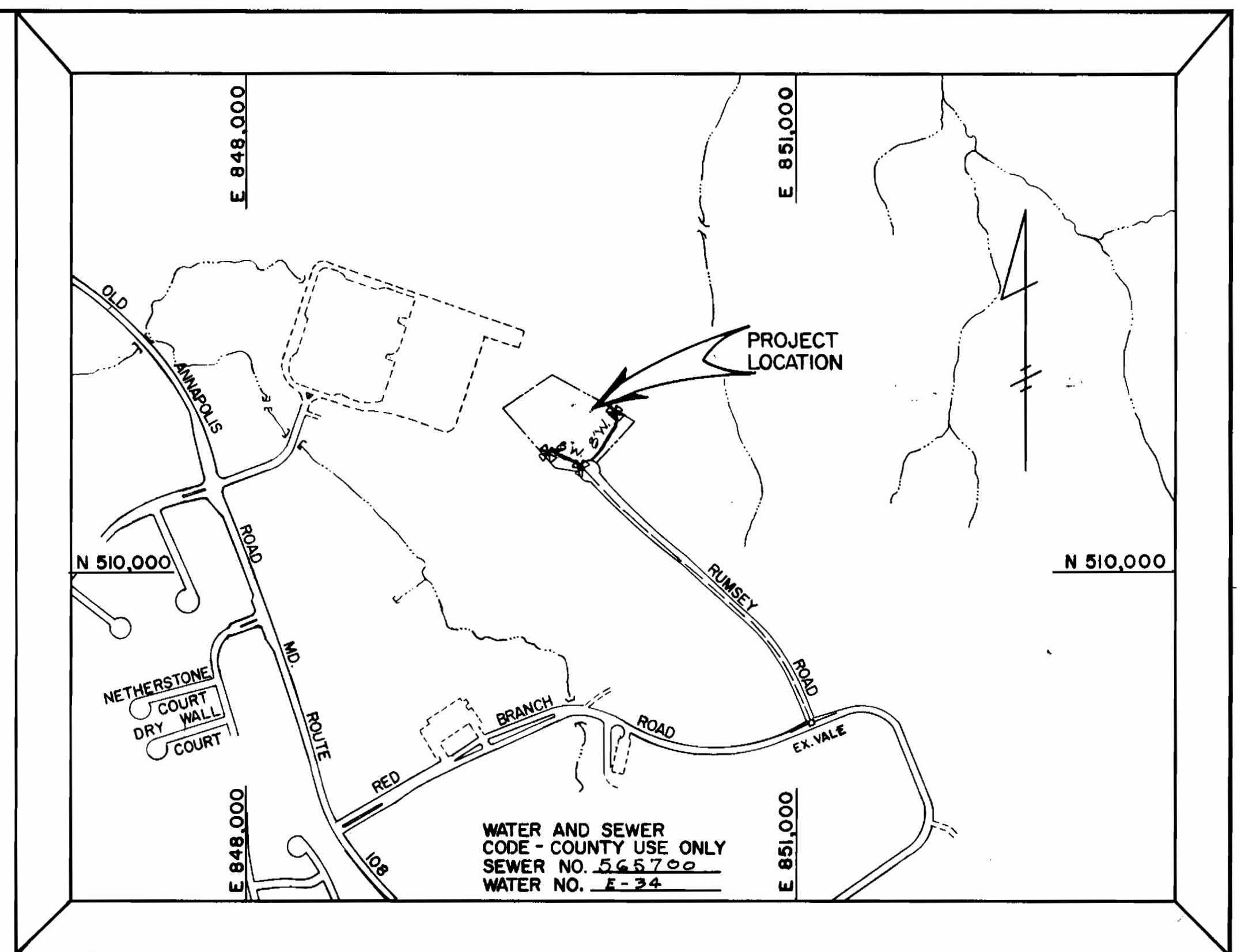


BENCH MARK
 B.M. #1 ELEV. 426.12
 P.K. NAIL IN RADIUS POINT
 OF GUL-DE-SAC

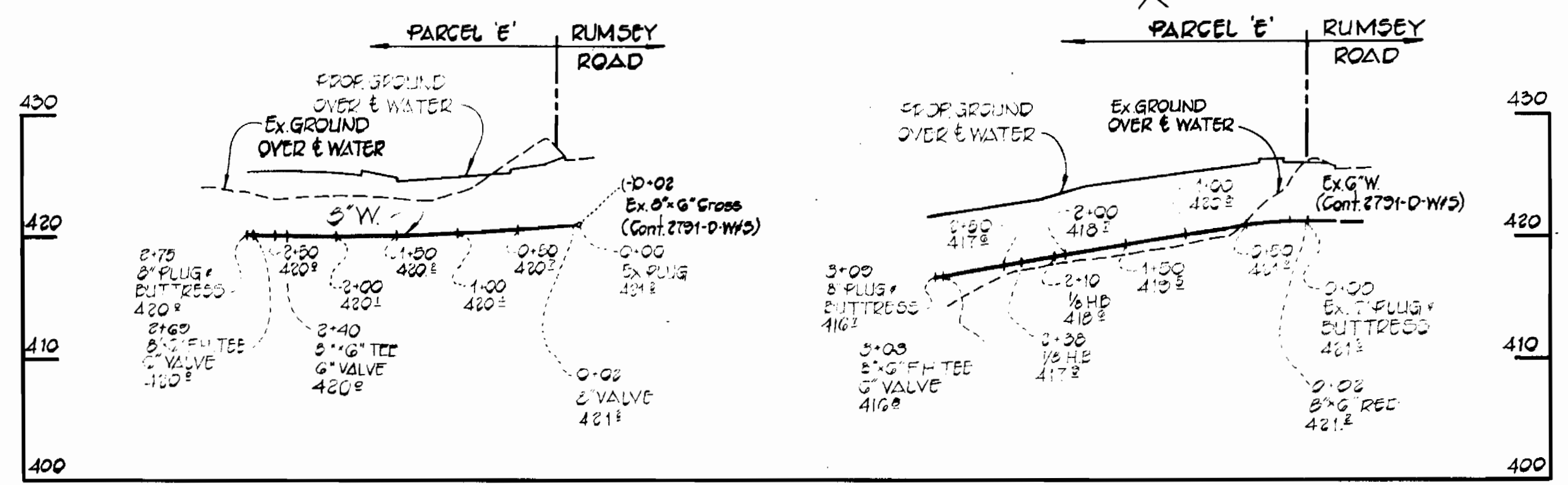


VICINITY MAP
 SCALE 1" = 600'

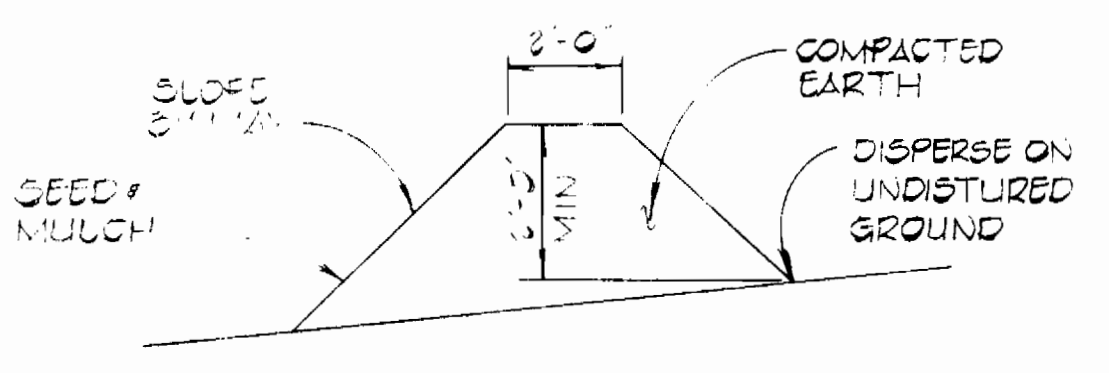
GENERAL NOTES

- APPROXIMATE LOCATIONS OF EXISTING UTILITIES ARE SHOWN. THE CONTRACTOR SHALL TAKE ALL NECESSARY PRECAUTIONS TO PROTECT EXISTING MAINS AND SERVICES AND MAINTAIN UNINTERRUPTED SUPPLY. ANY DAMAGE INCURRED SHALL BE REPAIRED IMMEDIATELY.
- ALL PIPE ELEVATIONS SHOWN ARE INVERT ELEVATIONS.
- THE CONTRACTOR SHALL LOCATE EXISTING UTILITIES A MINIMUM OF TWO WEEKS IN ADVANCE OF CONSTRUCTION OPERATIONS IN VICINITY OF UTILITIES.
- THE CONTRACTOR SHALL NOTIFY THE FOLLOWING UTILITIES OR AGENCIES AT LEAST FIVE (5) WORKING DAYS BEFORE STARTING WORK SHOWN ON THESE DRAWING.
 BALTIMORE GAS & ELECTRIC CO. - UNDERGROUND ELECTRIC - (685-0123)
 BALTIMORE GAS & ELECTRIC CO. - UNDERGROUND GAS - (685-0123)
 C & P TELEPHONE CO. (725-9976)
 MISS UTILITY (1-559-0100)
 HOWARD COUNTY BUREAU OF UTILITIES (992-2366)
- FOR ALL STANDARD DETAILS SEE STANDARDS BOUND IN SPECIFICATION.
- CLEAR ALL UTILITIES BY A MINIMUM OF 6" VERTICALLY, CLEAR ALL UTILITY POLES BY 2'-0" MINIMUM OR TUNNEL, AS REQUIRED. ANY COST INCURRED TO THE CONTRACTOR FOR TUNNELING OR BRACING POLES SHALL BE INCLUDED IN THE UNIT PRICE BID FOR EXCAVATION.
- BUTTRESS OR ANCHOR ALL WATER MAIN FITTINGS WITH CONCRETE. ALL VALVES SHALL BE STRAPPED TO TEES IN ACCORDANCE WITH STANDARD DETAILS.
- ALL WATER MAINS TO HAVE A MINIMUM OF 3'-6" COVER UNLESS OTHERWISE NOTED.
- ALL FIRE HYDRANTS SHALL BE STRAPPED TO THE TEE AND SHALL BE BUTTRESSED WITH CONCRETE IN ACCORDANCE WITH STANDARD DETAILS. COST OF STRAPPING FIRE HYDRANTS AND VALVES TO BE INCLUDED IN THE UNIT PRICE BID FOR FURNISHING AND INSTALLING FIRE HYDRANTS. SOIL AROUND THE FIRE HYDRANT TO BE COMPACTED IN ACCORDANCE WITH SECTION 5-15 OF THE HOWARD COUNTY STANDARD SPECIFICATIONS.
- BURY LINE ELEVATIONS ON FIRE HYDRANTS SHALL BE SET TO THE ELEVATIONS SHOWN ON THE DRAWINGS.
- ALL VERTICAL CONTROLS ARE BASED ON U.S.G.S. SYSTEM.
- ALL WATER MAINS TO BE C.I.P. OR D.I.P. UNLESS OTHERWISE NOTED.
- ALL WATER HOUSE CONNECTIONS SHALL BE FOR AN INSIDE METER SETTING.
- ALL HORIZONTAL CONTROL IS BASED ON MARYLAND STATE COORDINATE SYSTEM.

PLAN
 1" = 50'



PROFILES
 SCALE: HOR. 1" = 100'
 VER. 1" = 10'



TEMPORARY EARTH DIVERSION BERM
 DIVERSION BERMS ARE REQUIRED EVERY 250 FEET ON SLOPES IS CLOSER TO 4% OR GREATER. THE BERMS SHALL CONFORM TO THE TYPICAL SECTION SHOWN HEREON AND SHALL BE CONSTRUCTED ACROSS THE CONSTRUCTION AREAS IMMEDIATELY AFTER THE BACKFILLING OF THE PIPE TRENCH AND PRIOR TO PLACING STABILIZATION IN ORDER TO PREVENT EROSION OF THE BACKFILLED AREA.

SEDIMENT CONTROL MEASURES FOR THIS CONTRACT WILL BE IMPLEMENTED IN ACCORDANCE WITH ARTICLE 15.00 OF THE SPECIFICATIONS AND ALSO AS SHOWN ON THE GRADING & SEDIMENT CONTROL PLAN DRAWING 3 OF 3 - SDP-81-43C REVIEWED FOR HOWARD SOIL CONSERVATION DISTRICT AND MEETS TECHNICAL REQUIREMENTS
 APPROVED: *William J. ...* 3-30-81
 H/S SOIL CONSERVATION SERVICE DATE

THIS DEVELOPMENT PLAN IS APPROVED FOR SOIL EROSION AND SEDIMENT CONTROL BY THE HOWARD SOIL CONSERVATION DISTRICT
 APPROVED: *William J. ...* 3-30-81
 HOWARD SCD DATE

QUANTITIES			
ITEM	EST'D	AS-BUILT	SUPPLIER
8" WATER	582 LF		
FIRE HYD	2 EA		
6" VALVES	3 EA		
6" WATER	50 LF		
8" VALVE	1 EA		

CONTRACT NO. 44-0960-D
 PARCEL 'E'
 EQUESTRIAN CENTER SECTION - I
 WATER MAIN EXTENSION

STATE OF MARYLAND
 DEPARTMENT OF PUBLIC WORKS
 HOWARD COUNTY, MARYLAND

Mark F. Nemy 4-6-81
 DIRECTOR OF PUBLIC WORKS DATE

William J. ... 4-6-81
 CHIEF, BUREAU OF ENGINEERING DATE

... 4-6-81
 CHIEF, LAND DEVELOPMENT DIVISION DATE

FISHER, COLLINS AND CARTER, INC.
 CIVIL ENGINEERS AND LAND SURVEYORS
 8388 COURT AVENUE
 ELLICOTT CITY, MARYLAND 21043

CONTRACT NO. 44-0960-D

PLAN AND PROFILE
 OF WATER MAINS

PARCEL 'E'
 EQUESTRIAN CENTER - SECTION I
 OAKLAND RIDGE INDUSTRIAL PARK
 HOWARD COUNTY, MARYLAND

DRAWING NO. 1 OF 1
 SCALE AS SHOWN
 DES: D.D.S.
 DRN: D.B.S.
 CHK: T.A.F.