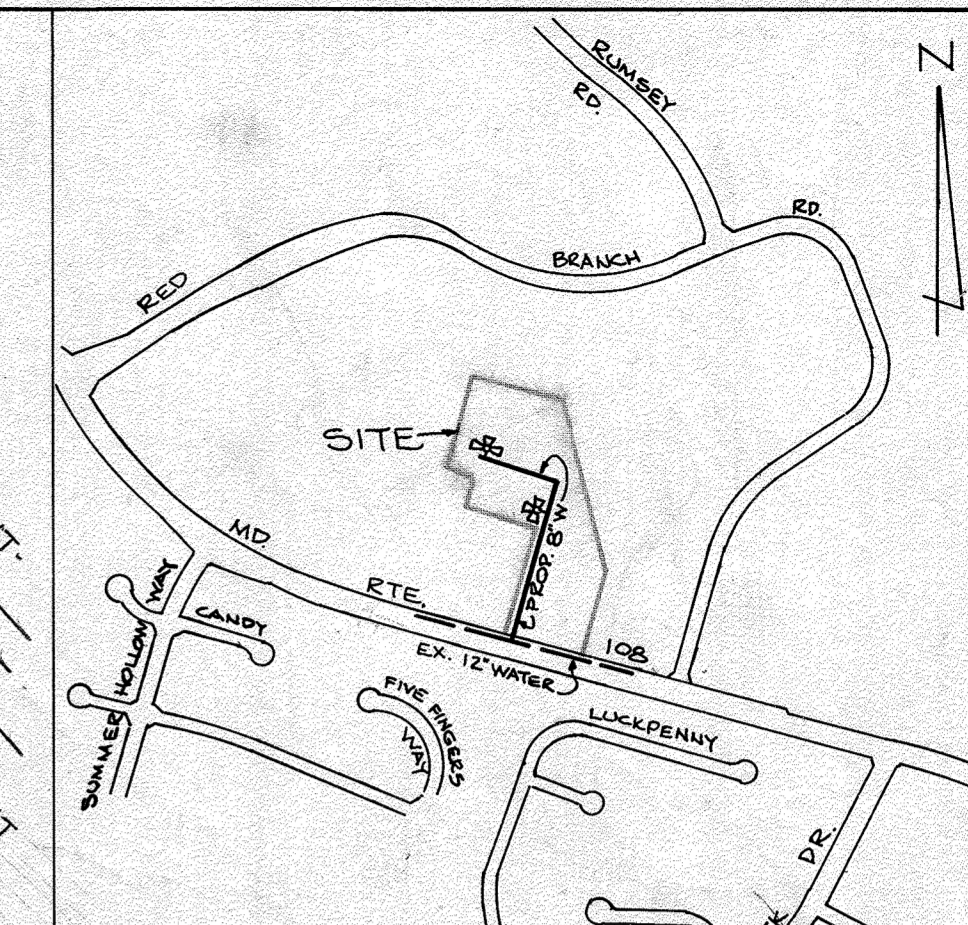


QUANTITIES			
ITEM	ESTIMATED	AS-BUILT	SUPPLIER
8" WATER	287 L.F.	1028	A & P
6" WATER	13 L.F.	24	A & P
8" VALVE	5	5	A & P
6" VALVE	2	2	A & P
FIRE HYDRANT	2	2	A & P
8" SEWER	300 LF	382	CERT-TEE
6" SEWER	32 LF	151	CERT-TEE
MANHOLES	2	2	ATLANTIC

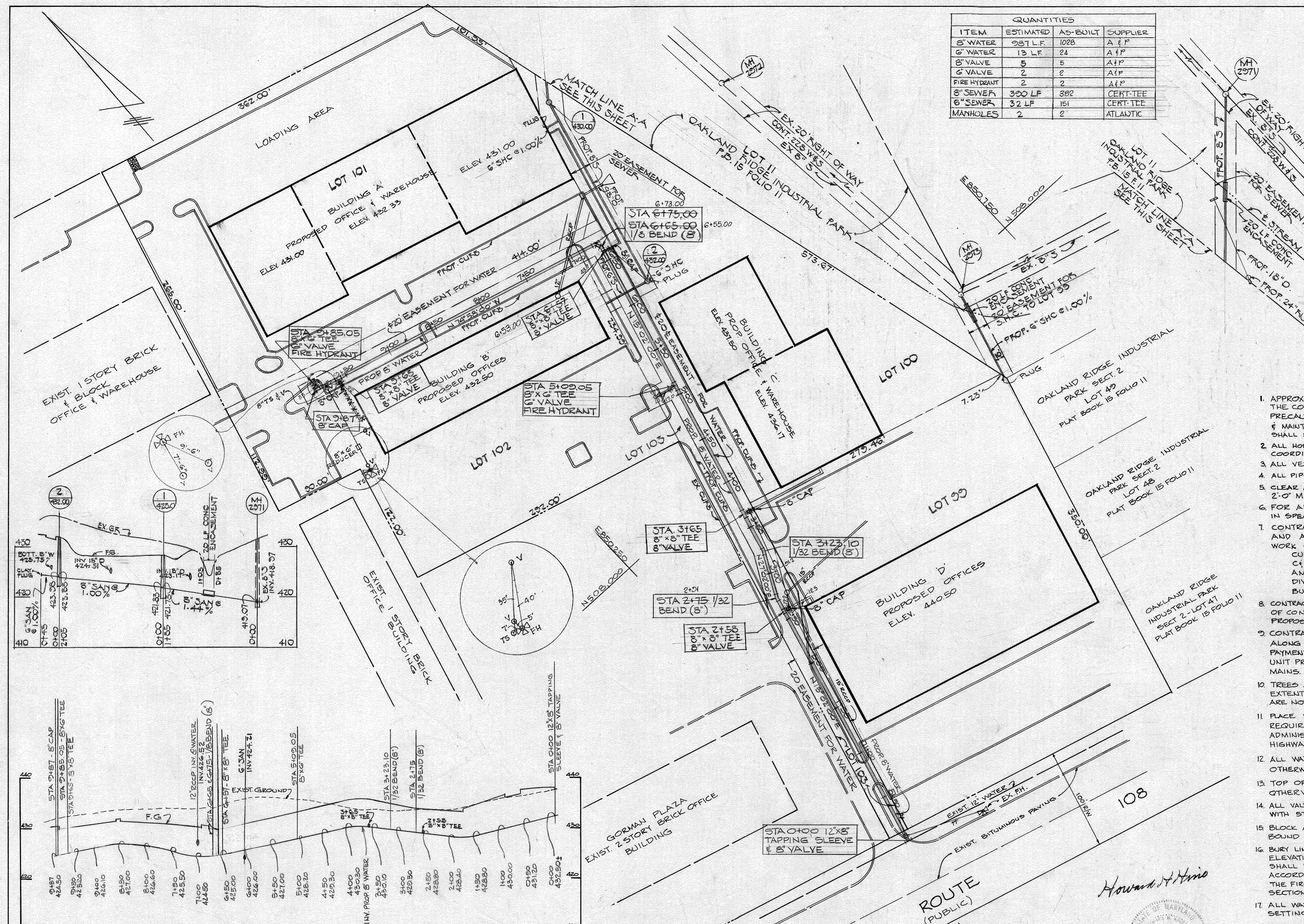


**VICINITY MAP**  
SCALE: 1" = 600'

WATER AND SEWER CODE - FOR COUNTY USE  
WATER NO G 04  
SEWER NO 56574.00

TYPE OF BUILDINGS - WAREHOUSES & OFFICES  
NO. OF LOTS - 1  
NO. OF WATER HOUSE CONNECTIONS 4

- GENERAL NOTES**
- APPROXIMATE LOCATION OF EXISTING MAINS ARE SHOWN. THE CONTRACTOR SHALL TAKE ALL NECESSARY PRECAUTIONS TO PROTECT EXISTING MAINS & SERVICES & MAINTAIN UNINTERRUPTED SUPPLY. ANY DAMAGE INCURRED SHALL BE REPAIRED IMMEDIATELY.
  - ALL HORIZ. CONTROLS ARE BASED ON MARYLAND STATE COORDINATES.
  - ALL VERT. CONTROLS ARE BASED ON U.S.G.S. DATUM.
  - ALL PIPE ELEVATIONS SHOWN ARE INVERT ELEVATIONS.
  - CLEAR ALL UTILITIES BY A MIN. OF 6' CLEAR ALL POLES 2'-0" MIN. OR TUNNEL AS REQUIRED.
  - FOR ALL STANDARD DETAILS SEE STANDARDS BOUND IN SPECIFICATIONS.
  - CONTRACTORS SHALL NOTIFY THE FOLLOWING UTILITIES AND AGENCIES AT LEAST FIVE (5) DAYS BEFORE STARTING WORK ON THESE PLANS.  
CUSTOMER SERVICE 685-0123  
C & P TELEPHONE CO 725-2966  
AMERICAN TELEPHONE & TELEGRAPH - CABLE LOCATION DIVISION 301-393-3553  
BUREAU OF UTILITIES HOWARD COUNTY 292-2366
  - CONTRACTOR SHALL LOCATE EXISTING UTILITIES IN ADVANCE OF CONSTRUCTION OPERATIONS IN THE VICINITY OF PROPOSED UTILITIES.
  - CONTRACTOR SHALL REMOVE TREES, STUMPS & ROOTS ALONG LINE OF EXCAVATION AS DIRECTED BY THE ENGINEER. PAYMENT FOR SUCH REMOVAL SHALL BE INCLUDED IN THE UNIT PRICE BID FOR EXCAVATION & BACKFILL FOR WATER MAINS.
  - TREES ARE TO BE PROTECTED FROM DAMAGE TO MAXIMUM EXTENT. TREES LOCATED WITHIN THE CONSTRUCTION STRIP ARE NOT TO BE REMOVED OR DAMAGED BY THE CONTRACTOR.
  - PACE REGULATION "MEN WORKING" & WARNING SIGN AS REQUIRED TO COMPLY WITH MD STATE HIGHWAY ADMINISTRATION MANUAL OF TRAFFIC CONTROL FOR HIGHWAY CONSTRUCTION & MAINTENANCE OPERATIONS
  - ALL WATER MAINS TO BE C.I.P. OR D.I.P. UNLESS OTHERWISE NOTED.
  - TOP OF ALL WATER MAINS TO HAVE 3/2" COVER UNLESS OTHERWISE NOTED.
  - ALL VALVES SHALL BE STRAPPED TO TEES IN ACCORDANCE WITH STANDARD DETAILS.
  - BLOCK ALL FITTINGS WITH CONCRETE. SEE STANDARDS BOUND IN SPECIFICATIONS.
  - BURY LINE ELEVATIONS ON FIRE HYDRANT SHALL BE TO THE ELEVATIONS SHOWN ON THE DRAWINGS. ALL FIRE HYDRANTS SHALL BE STRAPPED & BUTTRESSED IN CONCRETE IN ACCORDANCE WITH THE STANDARD DETAILS. SOIL AROUND THE FIRE HYDRANTS TO BE COMPACTED IN ACCORDANCE WITH SECTION 5-15 OF THE STANDARD SPECS.
  - ALL WATER HOUSE CONNECTIONS SHALL BE METER SETTING FOR INSIDE.
  - THE CONTRACTOR SHALL NOT OPERATE ANY WATER MAINS VALVES ON THE EXISTING SYSTEM.



HOWARD SOIL CONSERVATION DISTRICT  
REVIEWED FOR HOWARD SOIL CONSERVATION DISTRICT AND MEETS TECHNICAL REQUIREMENTS  
*Ray J. Deaton* 12-17-80

THIS DEVELOPMENT PLAN IS APPROVED FOR SOIL EROSION AND SEDIMENT CONTROL BY THE HOWARD SOIL CONSERVATION DISTRICT  
*William V. Rame* 12-17-80

DEPARTMENT OF PUBLIC WORKS  
HOWARD COUNTY, MARYLAND  
*James J. Ellis* 12/18/80  
CHIEF, BUREAU OF UTILITIES

*William S. Riley* 12/18/80  
CHIEF, BUREAU OF ENGINEERING

DEPARTMENT OF PUBLIC WORKS  
HOWARD COUNTY, MARYLAND  
*William S. Riley* 12-18-80  
CHIEF, LAND DEVELOPMENT DIVISION

*William F. Nunn* 12-18-80  
DIRECTOR OF PUBLIC WORKS

CONTRACT NO. 24-0953-D  
8930 OLD ANNAPOLIS ROAD  
A. D. O.

PLAN & PROFILE OF  
WATER & SEWER MAIN

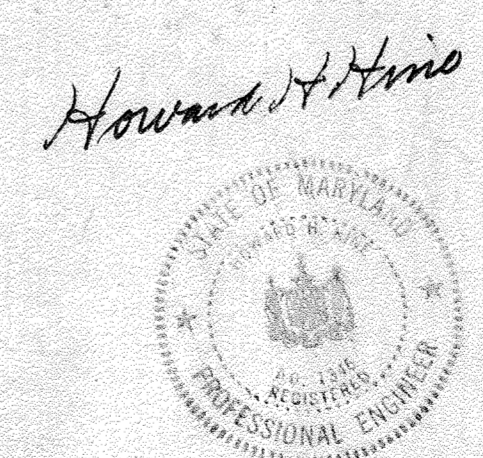
LOTS 99, 100, 101, 102 & 103  
OAKLAND RIDGE INDUSTRIAL PARK  
2<sup>ND</sup> ELECTION DISTRICT  
HOWARD COUNTY, MARYLAND

OAKLAND RIDGE INDUSTRIAL PARK  
SECT 2 - LOTS 99 THRU 102 - C. 24-0953-D

DRAWING No. 1 OF 1

SCALE: PLAN: 1" = 50' PROFILE: 1" = 10' VERT. 1" = 10'

DATE: NOV. 27, 1980



REV. 3-16-81 ADD 3 COORDINATE TICKS  
ELIMINATE "CLAY" PLOGS - ELIMINATE 10.00%  
SLOPE FOR 6" SHC IN TO BLDG'S  
REVISE 3 STATIONS ON WATER PROFILE AS SHOWN

WRA ADDED DIMENSIONS FOR ADD 8/12/21

WS 953-WS/1