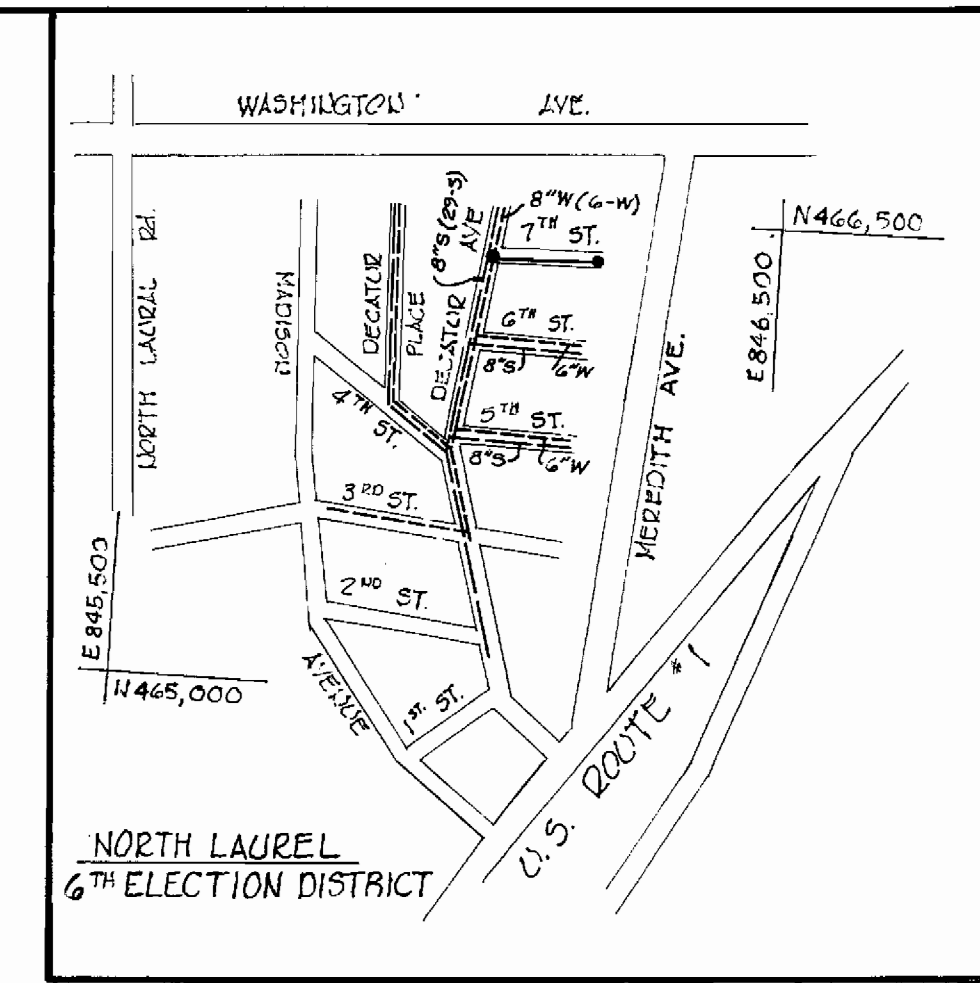
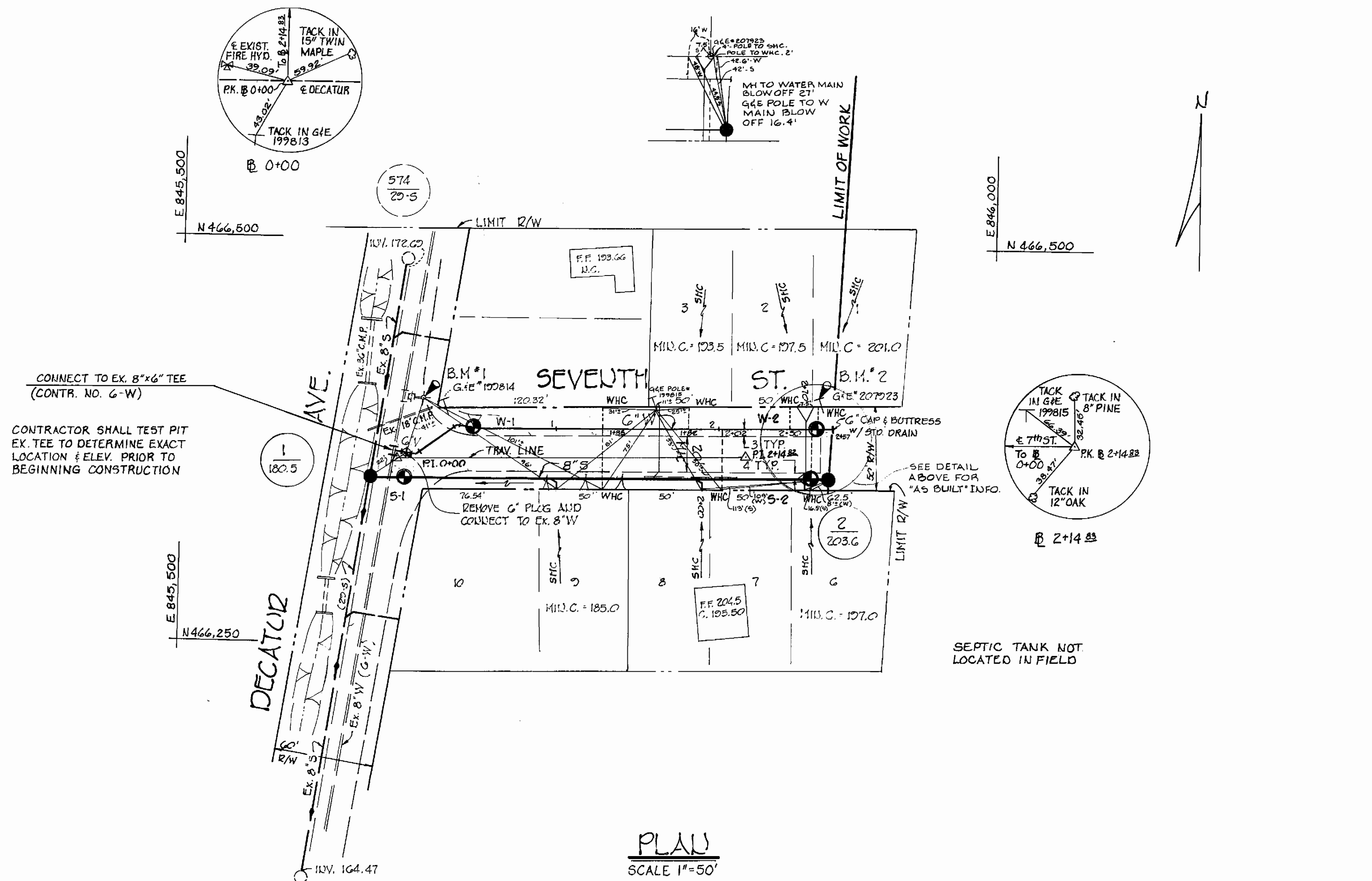


**BENCH MARKS**

T.O. 1 A B.M. 1 ELEV. 182.75  
 X-GOT ON FLANGE BOLT  
 FIRE HYDRANT N.E. CORNER  
 7<sup>TH</sup> ST. & DECATUR AVENUE

T.O. 1 A B.M. 2 ELEV. 205.70  
 2" D. SPIKE IN G.I.E. POLE # 207223  
 220' UP 7<sup>TH</sup> STREET



**PLAN**  
 SCALE 1"=50'

**GENERAL NOTES**

- APPROXIMATE LOCATION OF EXISTING MAINS ARE SHOWN. THE CONTRACTOR SHALL TAKE ALL NECESSARY PRECAUTIONS TO PROTECT EXISTING MAINS AND SERVICES AND MAINTAIN UNINTERRUPTED SUPPLY. ANY DAMAGE INCURRED SHALL BE REPAIRED IMMEDIATELY.
- ALL HORIZONTAL CONTROLS ARE BASED ON MARYLAND STATE COORDINATES.
- ALL VERTICAL CONTROLS ARE BASED ON U.S.G.S. DATUM.
- ALL PIPE ELEVATIONS SHOWN ARE INVERT ELEVATIONS.
- CLEAR ALL UTILITIES BY A MINIMUM OF 6". CLEAR ALL POLES 2'-0" MINIMUM OR TOWER AS REQUIRED.
- FOR ALL STANDARD DETAILS SEE HOWARD CO. DESIGN MANUAL, VOLUME II.
- CONTRACTOR SHALL LOCATE EXISTING UTILITIES IN ADVANCE OF CONSTRUCTION OPERATIONS IN THE VICINITY OF PROPOSED UTILITIES.
- CONTRACTOR SHALL NOTIFY THE FOLLOWING UTILITIES OR AGENCIES AT LEAST FIVE (5) DAYS BEFORE STARTING WORK ON THESE PLANS:  
 BALTIMORE GAS AND ELECTRIC CO. - UNDERGROUND ELEC. DISTRIBUTION ENG. - "DAMAGE CONTROL" - 234-5691, 864 E. UNDERGROUND GAS DISTRIBUTION ENG. - 559-0100, CAP TELE. CO. - 725-9976, AMER. TELE. & TELEG. - CABLE LOCATION DIV. - 301-993-3553, COLONIAL PIPELINE CO. - 781-4641.
- TREES ARE TO BE PROTECTED FROM DAMAGE TO MAXIMUM EXTENT.
- CONTRACTOR SHALL REMOVE TREES, STUMPS AND ROOTS ALONG LINE OF EXCAVATION AS DIRECTED BY THE ENGINEER. PAYMENT FOR SUCH REMOVAL SHALL BE INCLUDED IN THE UNIT PRICE BID FOR EXCAVATION AND BACKFILL FOR WATER AND SEWER MAINS.
- ALL WATER MAINS TO BE C.I.P., D.I.P.
- TOP OF ALL WATER MAINS TO HAVE A MINIMUM OF 3/2' COVER.
- ALL VALVES SHALL BE STRAPPED TO TREES IN ACCORDANCE WITH STD. DETAILS.
- BLOCK ALL FITTINGS WITH CONCRETE, SEE STD. BOUND IN SPECS.
- ALL SEWER MAINS SHALL BE C.S.P.K., V.C.P.K., OR A.C.P. CLASS 2400.
- THE CONTRACTOR SHALL PROVIDE A JOINT IN ALL SEWER MAINS WITHIN 2'-0" OF EXTERIOR MANHOLE WALL.
- ALL MANHOLES SHALL BE 4'-0" INSIDE DIAMETER.
- ALL WATER HOUSE CONNECTION SHALL BE METER SETTING FOR INSIDE.
- PLACE REGULATION "MEN WORKING" AND WARNING SIGNS AS REQ. TO COMPLY WITH MD. STATE HIGHWAY ADMIN. MANUAL OF TRAFFIC CONTROL FOR HIGHWAY CONSTRUCTION AND MAINTENANCE OPERATIONS.

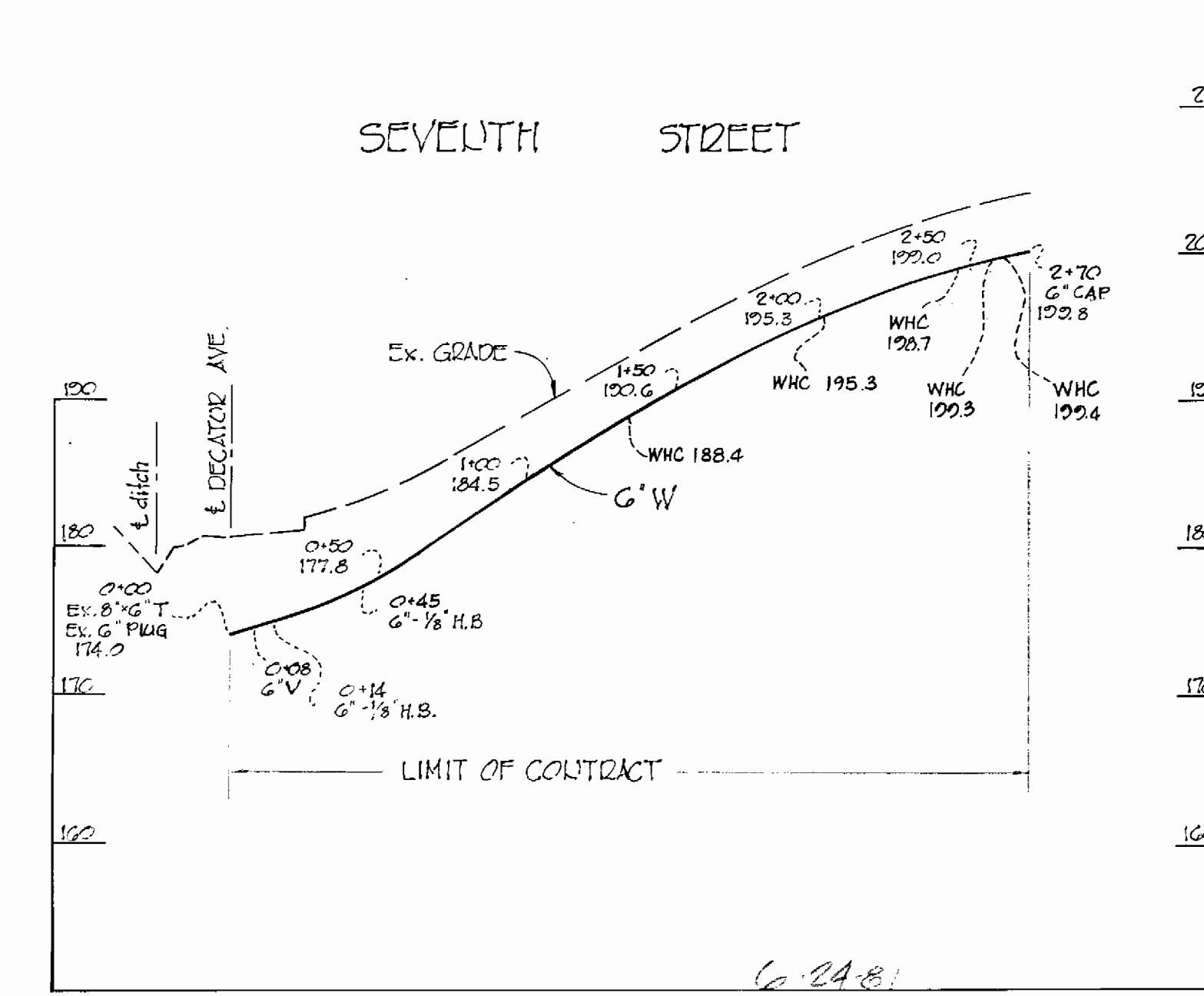
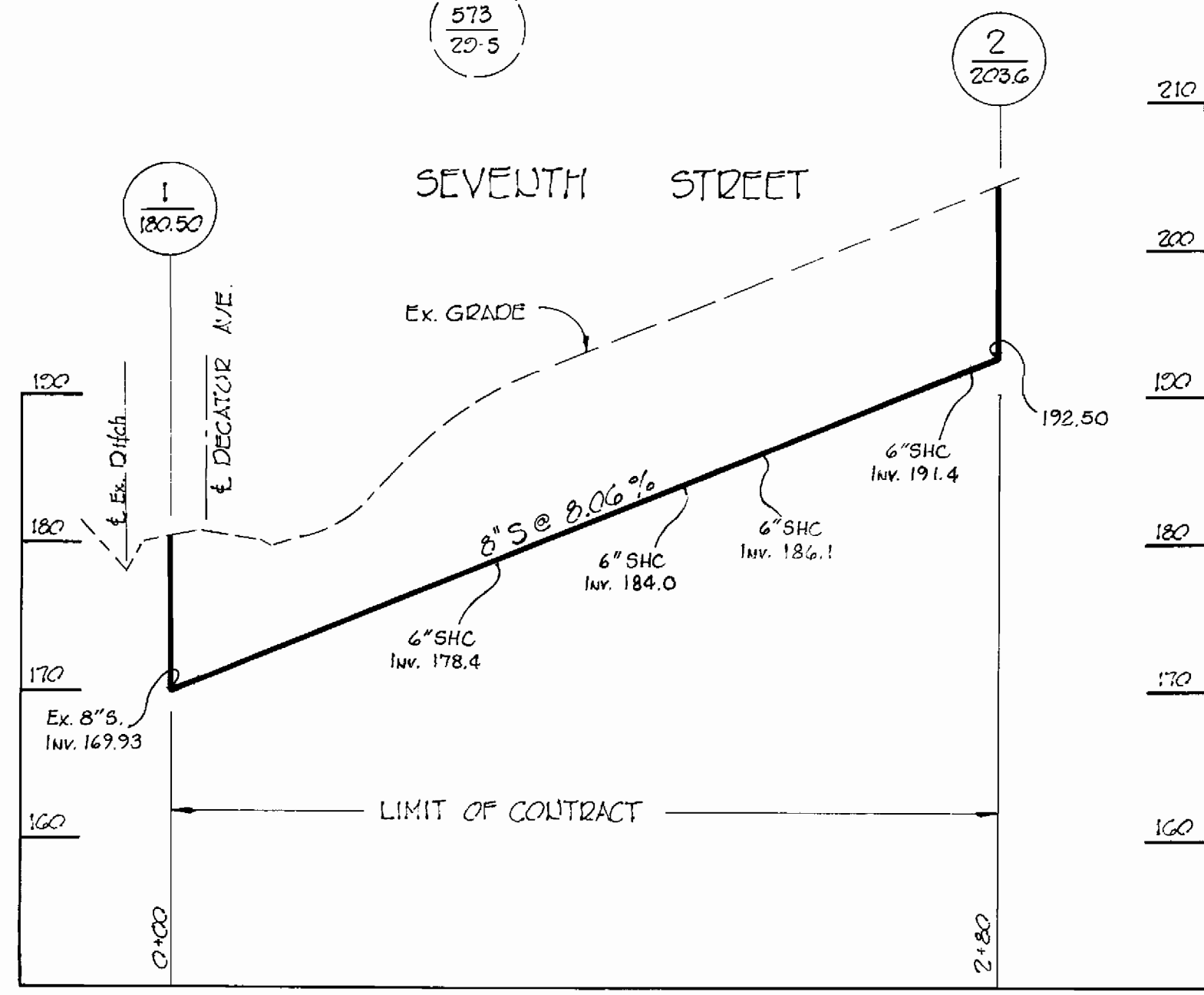
**QUANTITIES**

ITEM	BID	AS-BUILT	MATERIAL
8" SEWER	280 LF	280 LF.	A.C. - JOHN'S MANVILLE
MANHOLES	2		
6" WATER	270 LF.	270 LF.	D.I.P. - GAFFIN
6" VALVE	1		
6" SHC	119 LF.		
3/4" WHC	80 LF.		

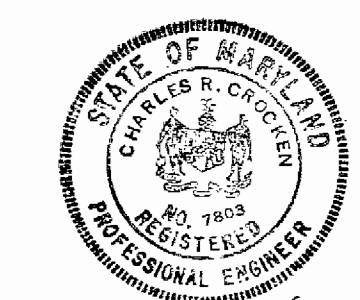
**WATER & SEWER CODE**

WATER CODE IS 005  
 SEWER CODE IS 7103500

● DENOTES BORING LOCATION  
 SEE SPECIFICATIONS FOR DATA



**PROFILES**  
 SCALE: Vert. 1"=10'  
 Horz. 1"=50'



**DEPARTMENT OF PUBLIC WORKS**  
 HOWARD COUNTY, MARYLAND

Director of Public Works: *William B. Oley* 6/17/91  
 Chief Bureau of Engineering: *William B. Oley* 6/17/91  
 Chief Bureau of Utilities: *Robert M. Brown* 6/15/91  
 Chief Utility Division: *Allen S. Brown* 6/16/91

**TYDINGS - OHEIM & ASSOCIATES**  
 SURVEYORS - ENGINEERS  
 8370 COURT AVENUE  
 ELLICOTT CITY, MARYLAND

CONTRACT NO. 24-0047  
 CAPITAL PROJECT NO. 5-1-G115 - W-1-810

**PLAN AND PROFILE OF  
 WATER & SEWER MAINS**

**SEVENTH STREET WATER & SEWER  
 NORTH LAUREL PARK**

DRAWING NO. 1 OF 1  
 SCALE AS SHOWN