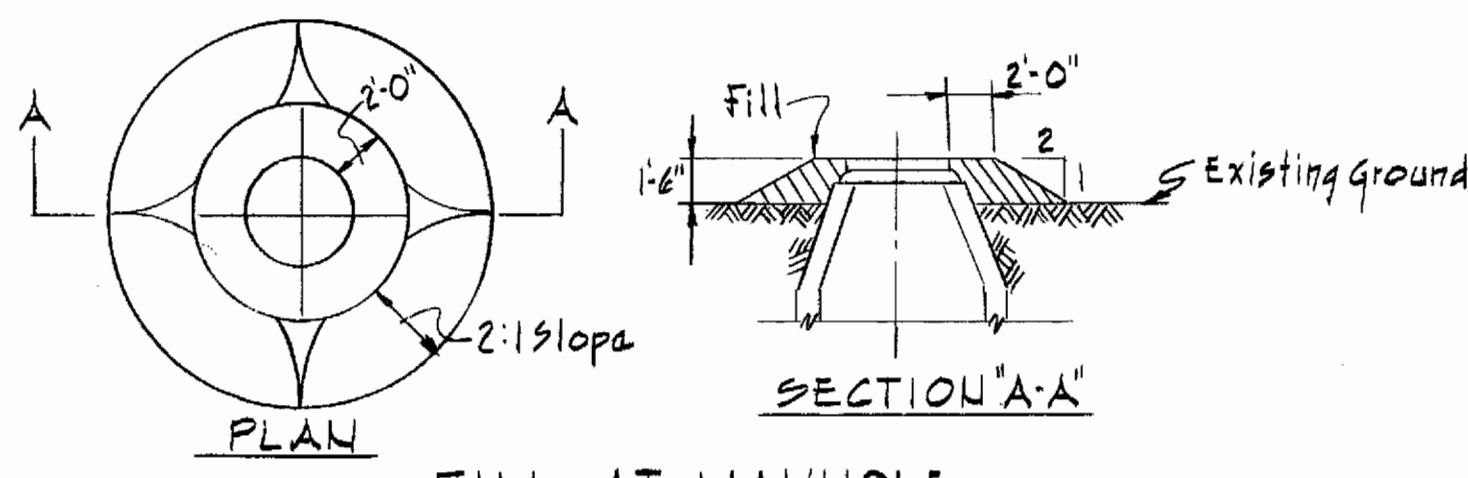


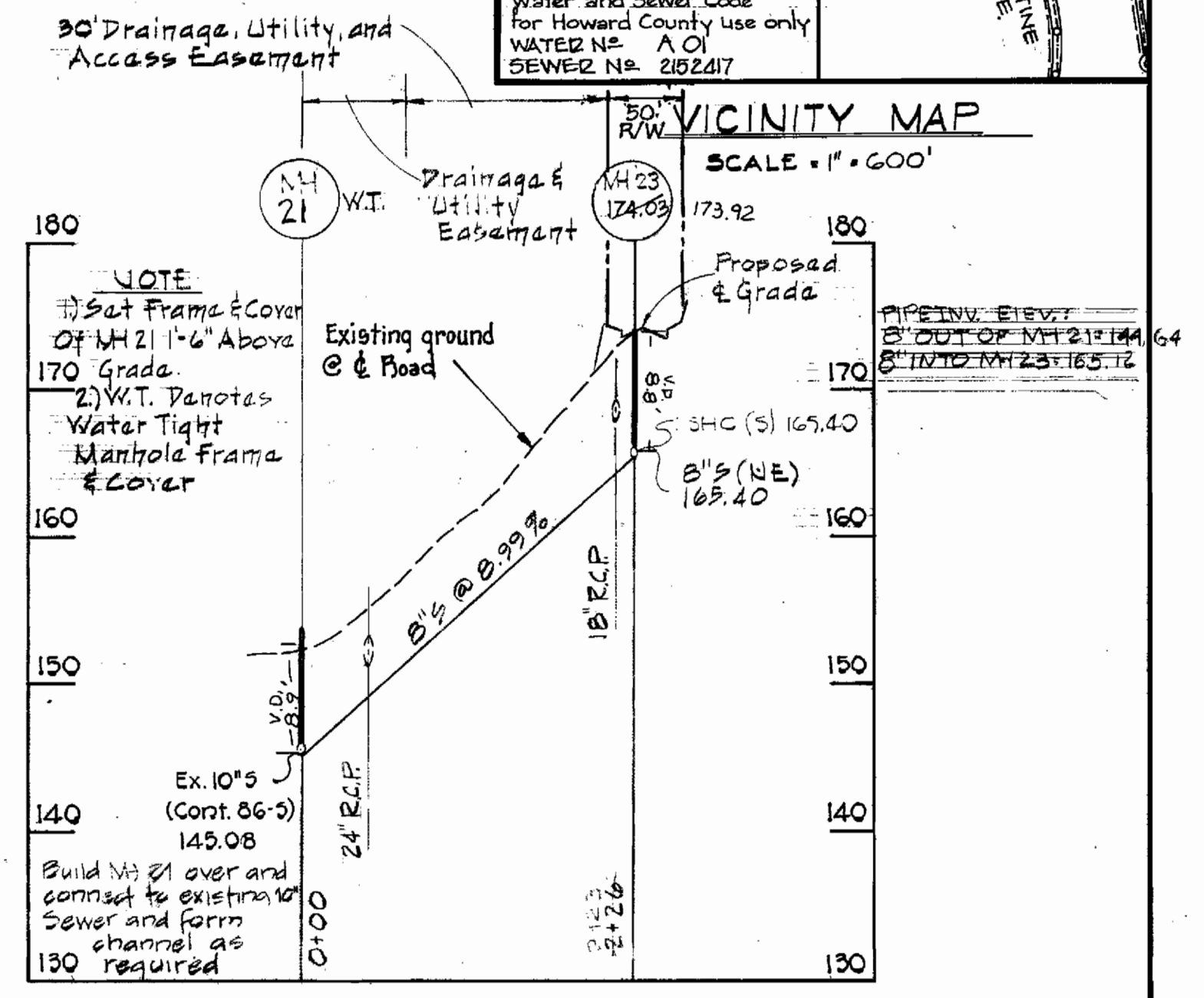
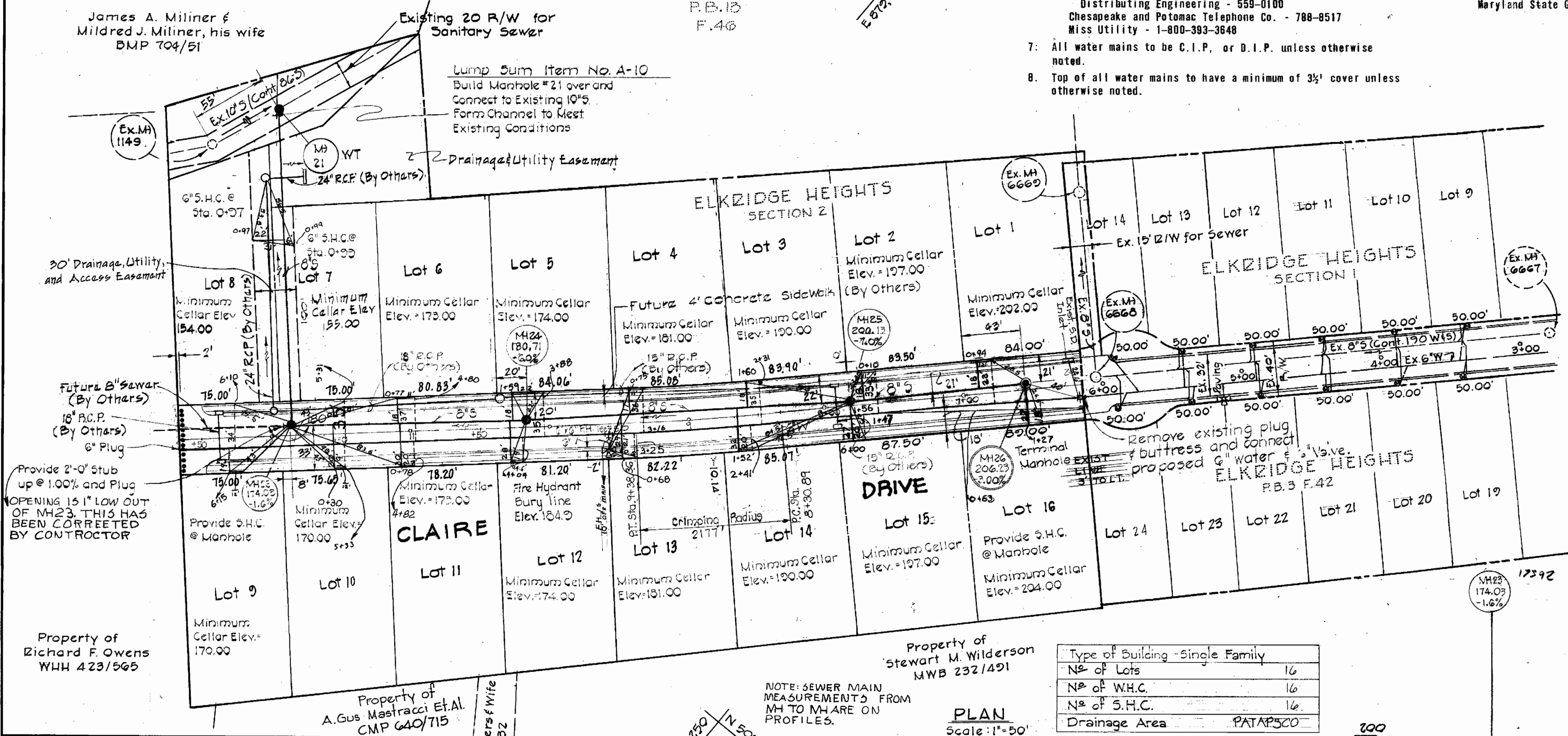
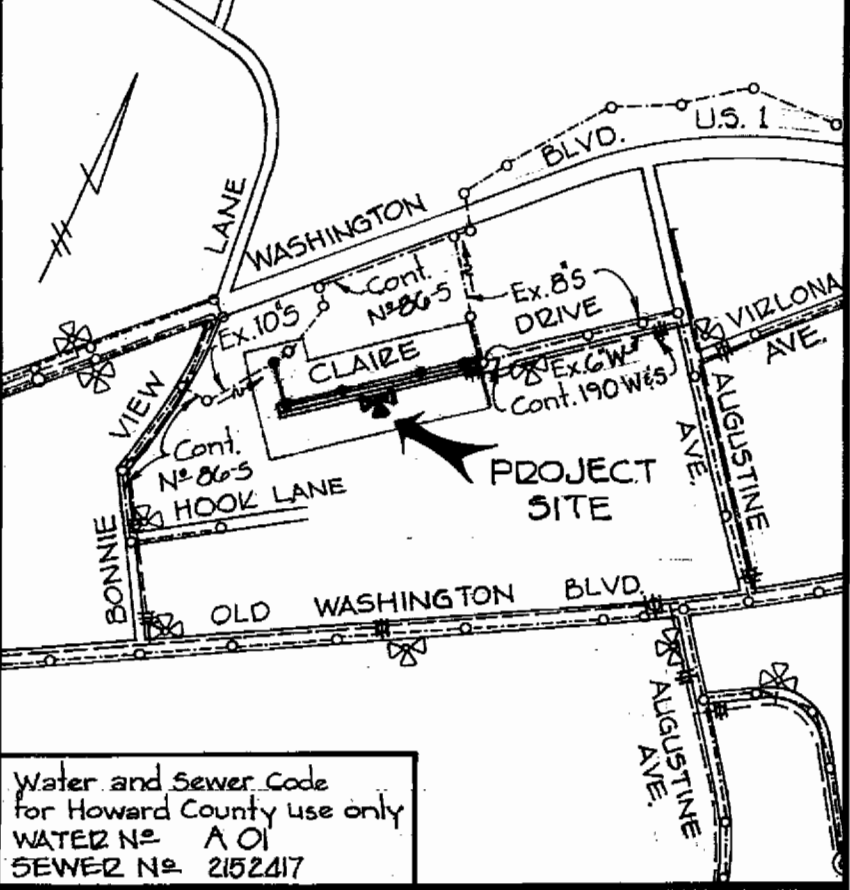
BENCH MARKS
 BENCH MARK BM-BJ-1 ELEV. 175.27
 Road side Bonnet Bolt fire hydrant SW corner intersection on Washington Blvd. and Bonnie View Lane.
 BENCH MARK BM-J5 ELEV. 154.58
 3 nails in G & E #110 195 South side Washington Blvd.



FILL AT MANHOLE
 Not To Scale
 THE ALLADIN CONSTRUCTION CORP. PROPERTY
 PARCEL #1
 P.B. 13
 F.46

- GENERAL NOTES**
1. Approximate location of existing mains are shown. The contractor shall take all necessary precautions to protect existing mains and services and maintain uninterrupted supply. Any damage incurred shall be repaired immediately.
 2. All pipe elevations shown are \ominus invert elevations.
 3. Clear all utilities by a minimum of 6". Clear all poles 2'-0" minimum or tunnel as required.
 4. For standard details see standards bound in specifications.
 5. Contractor shall locate existing utilities in advance of construction operations in the vicinity of proposed utilities.
 6. Contractor shall notify the following utilities or agencies at least five (5) days before starting work shown on these plans:
 Baltimore Gas and Electric Company - Underground Electric Distribution Engineering - "Damage Control" 234-5691
 Baltimore Gas and Electric Company - Underground Gas Distributing Engineering - 559-0100
 Chesapeake and Potomac Telephone Co. - 788-8517
 Miss Utility - 1-800-393-3648
 7. All water mains to be C.I.P. or D.I.P. unless otherwise noted.
 8. Top of all water mains to have a minimum of 3' cover unless otherwise noted.

9. All valves shall be strapped to tees in accordance with standard details.
10. Block all fittings with concrete, see standards bound in specifications.
11. Bury line elevations on fire hydrants shall be set to the elevations shown on the drawings. All fire hydrants shall be strapped and buttressed with concrete in accordance with standard details. Soil around the fire hydrant to be compacted in accordance with Section 5-15 of the Standard Specifications.
12. All sewer mains shall be C.S.P.X., V.C.P.X., or A.C.P. Class 2400 unless otherwise noted. PVC.
13. The contractor shall provide a joint in all sewer mains within 2'-0" of exterior manhole walls.
14. All manholes shall be 4'-0" inside diameter, unless otherwise noted.
15. All horizontal and vertical controls are based on the Maryland State Grid System.



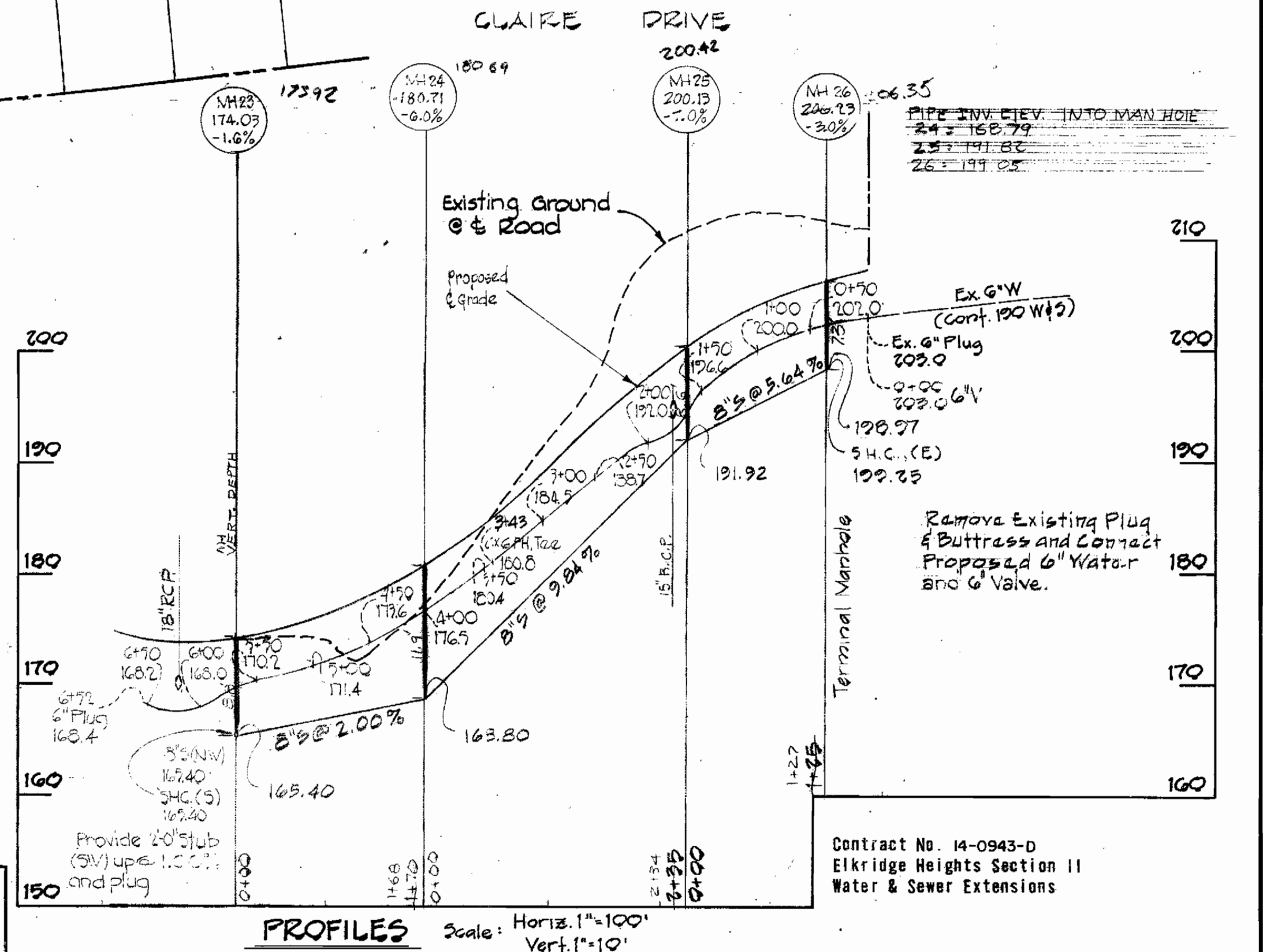
Type of Building	Single Family
N ^o of Lots	16
N ^o of W.H.C.	16
N ^o of S.H.C.	16
Drainage Area	PATAPSCO

QUANTITIES

ITEM	UNIT	PROPOSED	AS BUILT	SUPPLIER
8" S	L.F.	755	755	CARLON PVC
6" S	L.F.	410	381	CARLON PVC
6" W	L.F.	655	662	GRIFFIN DIP
3/4" W.H.C.	L.F.	400	434	FORD COPPER
Manholes	Each	5	5	ATLANTIC PRE-CAST
Fire Hydrant	Each	1	1	GRIFFIN DIP
6" V	Each	1	2	GRIFFIN DIP

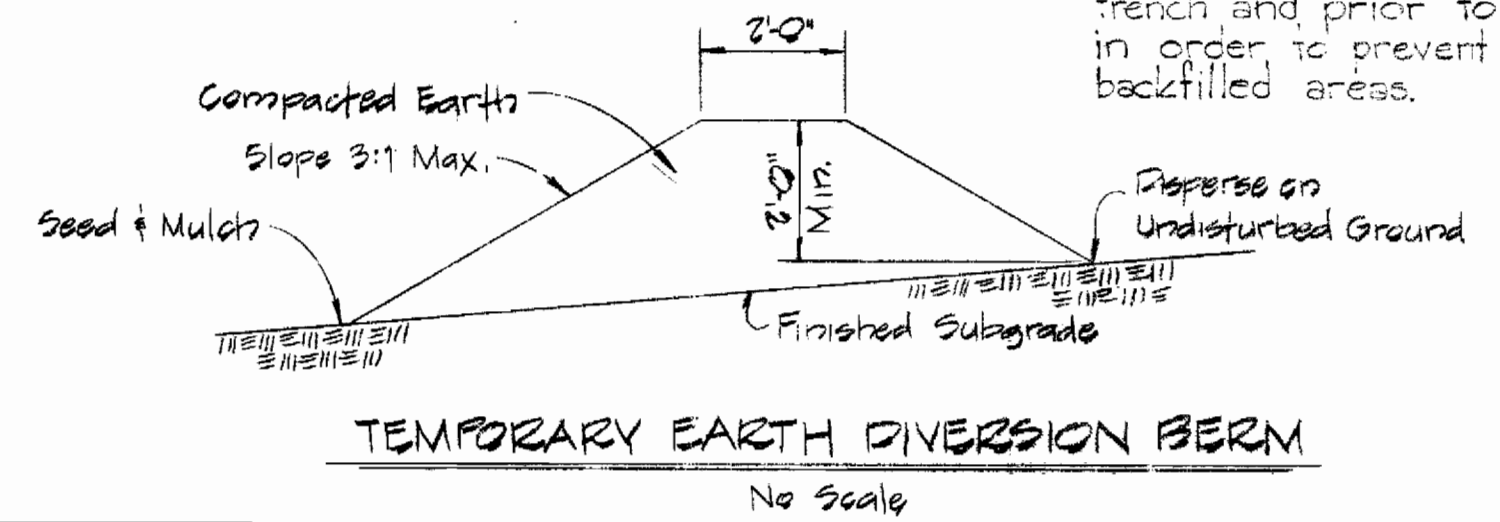
Sediment Control Measures for this Contract will be implemented in accordance with Section 14 of the Specification and Road Construction Plan F-80-131

NOTE: THE STORM WATER MANAGEMENT BASIN SHALL BE RESTORED TO THE DIMENSIONS AND SPECIFICATIONS STATED ON THE ROAD CONSTRUCTION PLAN F-80-131



HOWARD SOIL CONSERVATION DISTRICT
 REVIEWED FOR H.S.C.D AND MEETS
 TECHNICAL REQUIREMENTS
 U.S. SOIL CONSERVATION SERVICE DATE

APPROVED FOR SOIL EROSION AND
 SEDIMENT CONTROL BY THE HOWARD
 SOIL CONSERVATION DISTRICT
 APPROVED - HOWARD S.C.D. DATE



James J. Quinn
 CHIEF-BUREAU OF UTILITIES DATE

Melinda Hines
 CHIEF DIVISION OF LAND DEVELOPMENT DATE

PURDUM & JESCHKE
 ENGINEERS
 1023 N. CALVERT ST.
 BALTIMORE, MARYLAND

DEPARTMENT OF PUBLIC WORKS
 HOWARD COUNTY, MARYLAND
 Director of Public Works DATE
 Chief-Bureau of Engineering DATE

CONTRACT NO. 14-0943-D

PLAN AND PROFILE
 OF SEWER AND WATER MAINS

ELKRIDGE HEIGHTS II CLAIRE DRIVE
 WATER AND SEWER EXTENSIONS
 ELECTION DISTRICT NO. 1 - ELKRIDGE
 HOWARD COUNTY, MARYLAND

DRAWING
 NO. 1
 OF 1

SCALE
 As Shown

DESIGNED: ARZ/SEC
DRAFTED: ARZ/SEC
CHECKED: