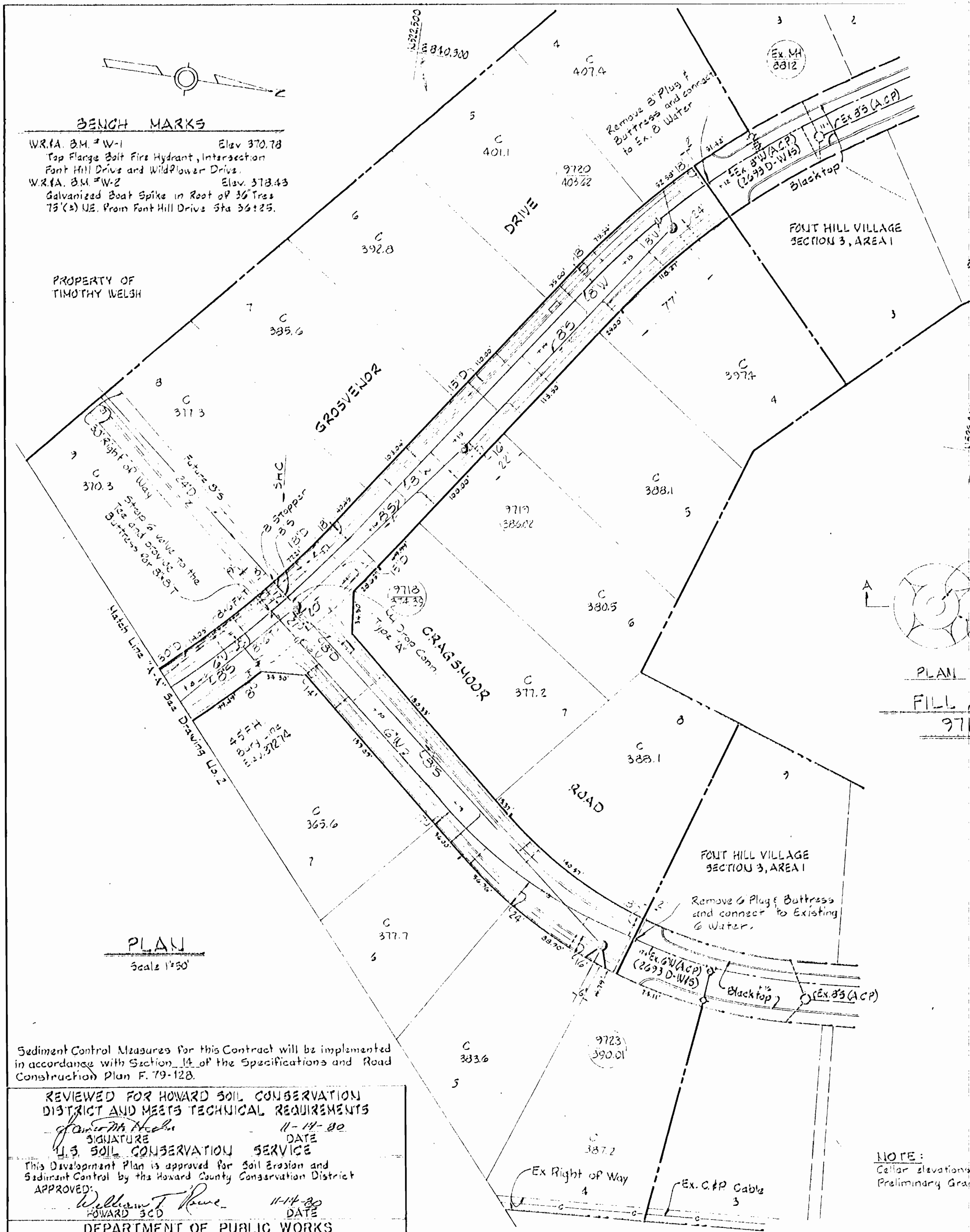


**BENCH MARKS**  
 W.R.1A. B.M. #W-1 Elev. 370.78  
 Top Flange Bolt Fire Hydrant, Intersection  
 Font Hill Drive and Wildflower Drive.  
 W.R.1A. B.M. #W-2 Elev. 378.43  
 Galvanized Boat Spike in Root of 30' Tree  
 75' (±) NE. From Font Hill Drive Sta 36+25.



**PLAN**  
 Scale 1"=50'

Sediment Control Measures for this Contract will be implemented in accordance with Section 14 of the Specifications and Road Construction Plan F. 79-128.

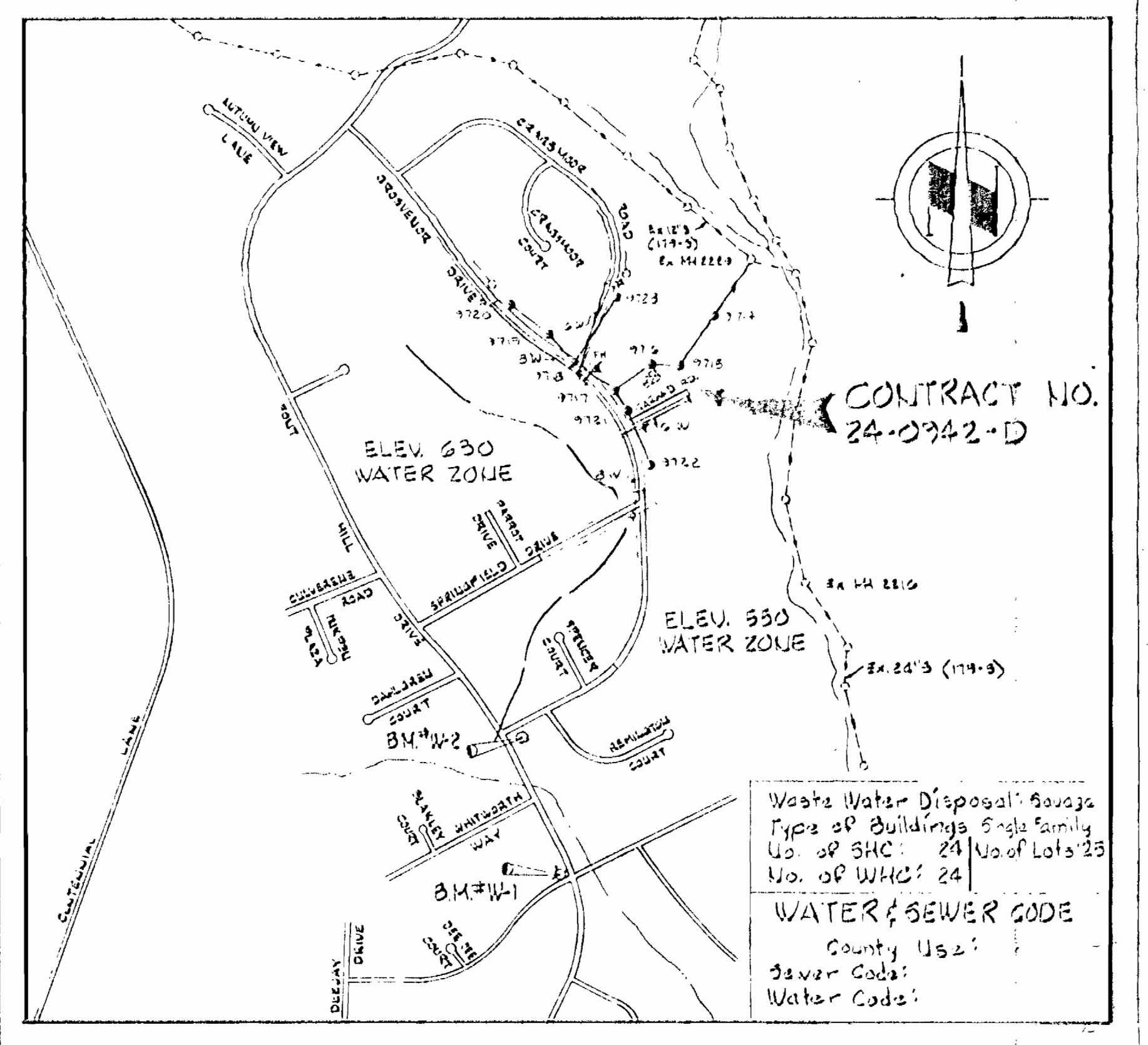
REVIEWED FOR HOWARD SOIL CONSERVATION DISTRICT AND MEETS TECHNICAL REQUIREMENTS  
*James M. Hecht* 11-14-80  
 SIGNATURE DATE  
 U.S. SOIL CONSERVATION SERVICE  
 This Development Plan is approved for Soil Erosion and Sediment Control by the Howard County Conservation District  
 APPROVED: *William T. Rowe* 11-14-80  
 HOWARD SCD DATE

DEPARTMENT OF PUBLIC WORKS  
 HOWARD COUNTY, MARYLAND  
 DIRECTOR OF PUBLIC WORKS - DATE  
 CHIEF - BUREAU OF ENGINEERING - DATE  
 CHIEF - LAND DEVELOPMENT DIVISION - DATE

WHITMAN, REQUARDT AND ASSOCIATES  
 ENGINEERS  
 1304 ST. PAUL ST.  
 BALTIMORE, MARYLAND

CONTRACT NO. 24-0942-D

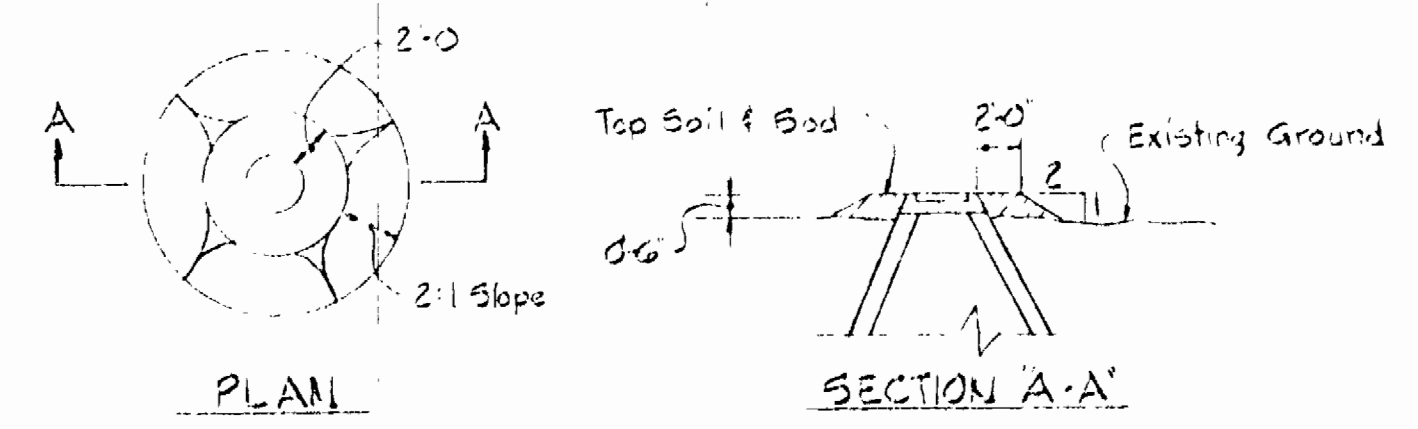
PLAN & DETAIL OF  
 WATER & SEWER MAINS



**VICINITY MAP**  
 Scale: 1"=600'

**GENERAL NOTES**

- APPROXIMATE LOCATION OF EXISTING MAINS ARE SHOWN. THE CONTRACTOR SHALL TAKE ALL NECESSARY PRECAUTIONS TO PROTECT EXISTING MAINS AND SERVICES AND MAINTAIN UNINTERRUPTED SUPPLY. ANY DAMAGE INCURRED SHALL BE REPAIRED IMMEDIATELY.
- ALL PIPE ELEVATIONS SHOWN ARE INVERT ELEVATIONS.
- THE CONTRACTOR SHALL LOCATE EXISTING UTILITIES A MINIMUM OF TWO WEEKS IN ADVANCE OF CONSTRUCTION OPERATIONS IN VICINITY OF UTILITIES.
- THE CONTRACTOR SHALL NOTIFY THE FOLLOWING UTILITIES OR AGENCIES AT LEAST FIVE DAYS BEFORE STARTING WORK SHOWN ON THESE PLANS:  
 BALTIMORE GAS AND ELECTRIC COMPANY - UNDERGROUND ELECTRIC DISTRIBUTION ENGINEERING DAMAGE CONTROL 234-5691  
 UNDERGROUND GAS DISTRIBUTION ENGINEERING 234-5621  
 CHESAPEAKE AND POTOMAC TELEPHONE COMPANY 393-3618,  
 MISS UTILITY - 1 - 553-0100
- FOR ALL STANDARD DETAILS SEE STANDARDS BOUND IN SPECIFICATIONS.
- ALL HORIZONTAL AND VERTICAL CONTROLS ARE BASED ON MARYLAND STATE DATUM.
- CLEAR ALL UTILITIES BY A MINIMUM OF 6".
- BLOCK ALL FITTINGS WITH CONCRETE. SEE STANDARDS BOUND IN SPECIFICATIONS.
- ALL WATER MAINS SHALL HAVE A MINIMUM OF 3' COVER.
- ALL WATER MAINS SHALL BE C.I.P. OR D.I.P. UNLESS OTHERWISE NOTED.
- ALL VALVES SHALL BE STRAPPED TO TEES WHERE APPLICABLE IN ACCORDANCE WITH THE STANDARD DETAILS.
- ALL FIRE HYDRANTS SHALL BE STRAPPED AND BUTTRESSED IN ACCORDANCE WITH THE STANDARD DETAILS. SOIL AROUND THE HYDRANTS SHALL BE COMPACTED IN ACCORDANCE WITH SECTION 5-15 OF THE STANDARD SPECIFICATIONS.
- PAYMENT FOR STRAPPING FIRE HYDRANTS AND VALVES WILL BE INCLUDED IN UNIT PRICE BID FOR FURNISHING AND LAYING WATER MAINS.
- BURY LINE ELEVATIONS ON FIRE HYDRANTS SHALL BE SET TO THE ELEVATIONS SHOWN ON THE DRAWINGS.
- ALL W.H.C.'S. SHALL BE 3/4" DIAMETER UNLESS OTHERWISE NOTED.
- WATER SERVICES SHALL BE FOR INSIDE METER SETTINGS.
- ALL SEWER MAINS SHALL BE C.S.P.X., V.C.P.X. OR A.C.P. CLASS 2400 UNLESS OTHERWISE NOTED.
- ALL MANHOLES SHALL BE 4'-0" INSIDE DIAMETER.
- THE CONTRACTOR SHALL PROVIDE A JOINT IN ALL SEWER MAINS WITHIN 2'-0" OF THE EXTERIOR MANHOLE WALLS.
- TREES ARE TO BE PROTECTED FROM DAMAGE TO MAXIMUM EXTENT. TREES LOCATED WITHIN THE CONSTRUCTION STRIP ARE NOT TO BE REMOVED OR DAMAGED BY THE CONTRACTOR.



**PLAN**  
**FILL AROUND MANHOLES**  
 9716, 9715 & 9714  
 Scale 1/8"=1'-0"

QUANTITIES			
ITEM	BID	AS-BUILT	MATERIAL / SUPPLIER
8" Sewer	2,380 LF		
Manholes	8 BVE		
8" Water	1110 LF		
6" Water	730 LF		
8" Valves	1		
5' V (Including FRV)	2		
Fire Hydrants	2		

NOTE:  
 Cellar elevations shown are from  
 Preliminary Grading Plan dated 1-10-80.

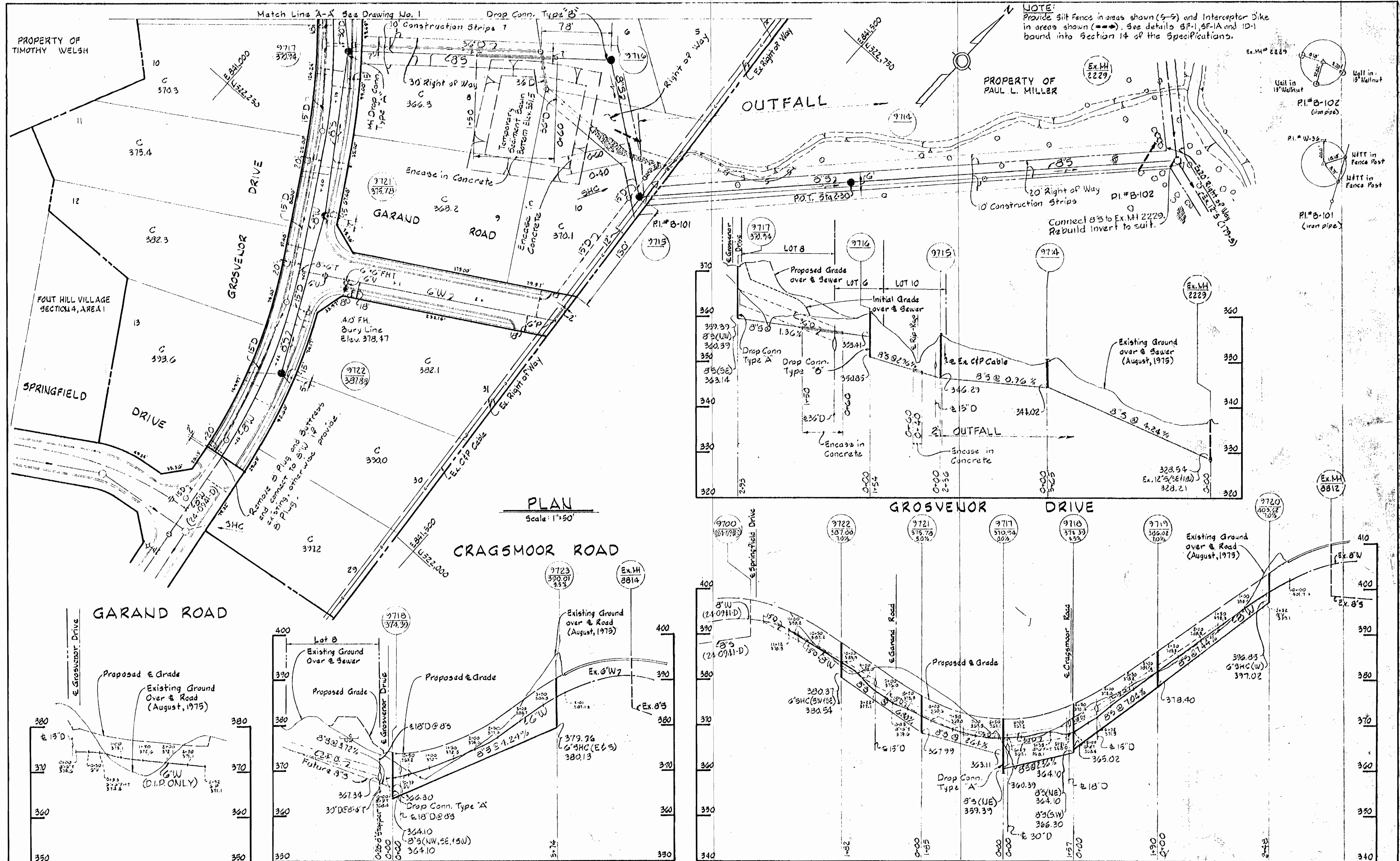
ELECTION DISTRICT  
 ELLICOTT CITY NO. 2

Font Hill Village  
 Section 4, Area 2  
 Contract No. 24-0942-D  
 DRAWING NO. 1 OF 2  
 SCALE AS SHOWN

11/24/80

GRID #24

NOVEMBER 11, 1980



DEPARTMENT OF PUBLIC WORKS  
HOWARD COUNTY, MARYLAND

DIRECTOR OF PUBLIC WORKS — DATE  
CHIEF — BUREAU OF ENGINEERING — DATE  
CHIEF — BUREAU OF UTILITIES — DATE

WHITMAN, REQUARDT AND ASSOCIATES  
ENGINEERS  
1304 ST. PAUL ST.  
BALTIMORE, MARYLAND

CONTRACT NO. 24-0942-D

PLAN & PROFILES OF  
WATER & SEWER MAINS

ELECTION DISTRICT  
ELLCOTT CITY NO. 2

Font Hill Village  
Section 4, Area 2  
Contract No. 24-0942-D

**DRAWING NO. 2 OF 2**

**SCALE AS SHOWN**