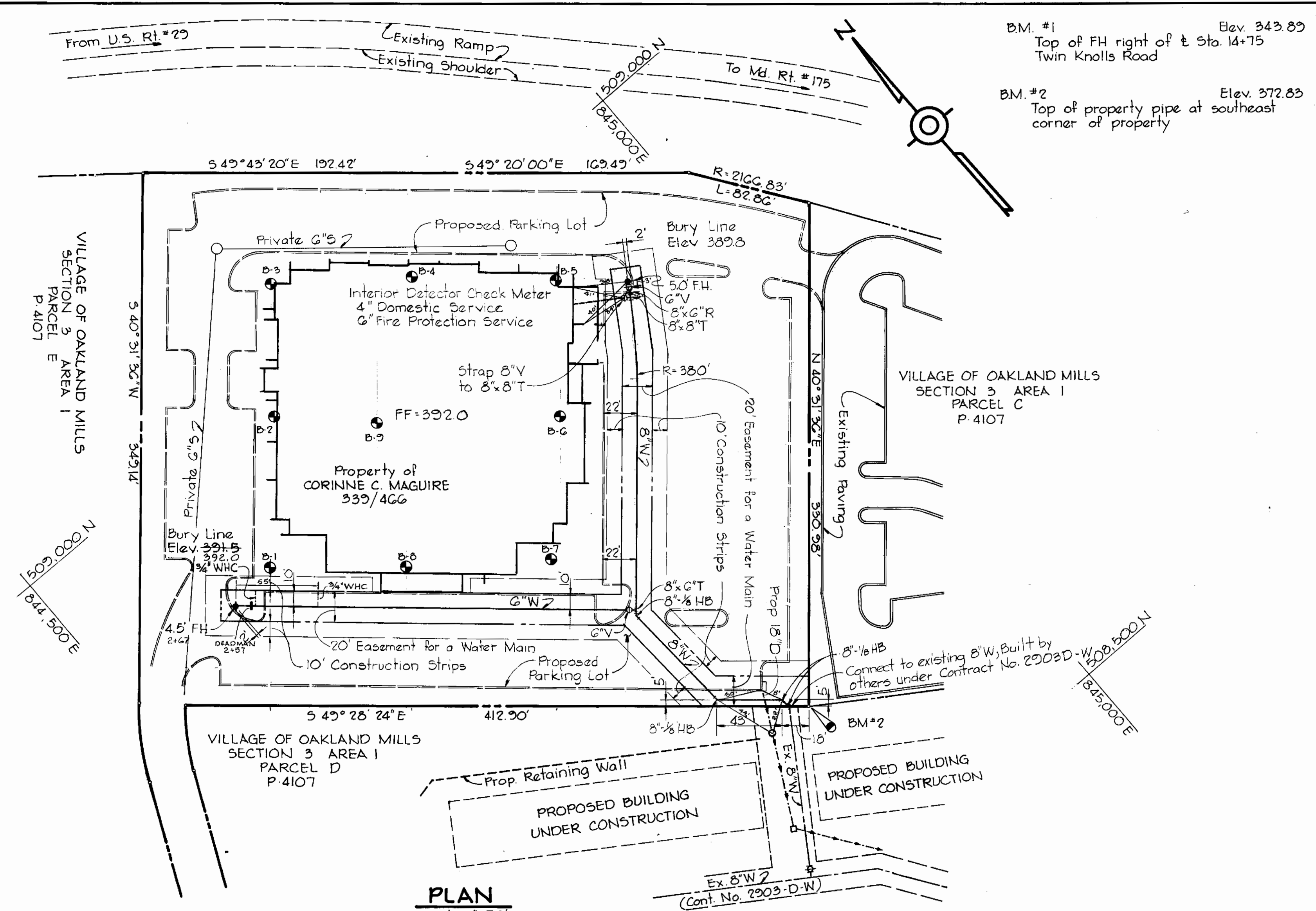


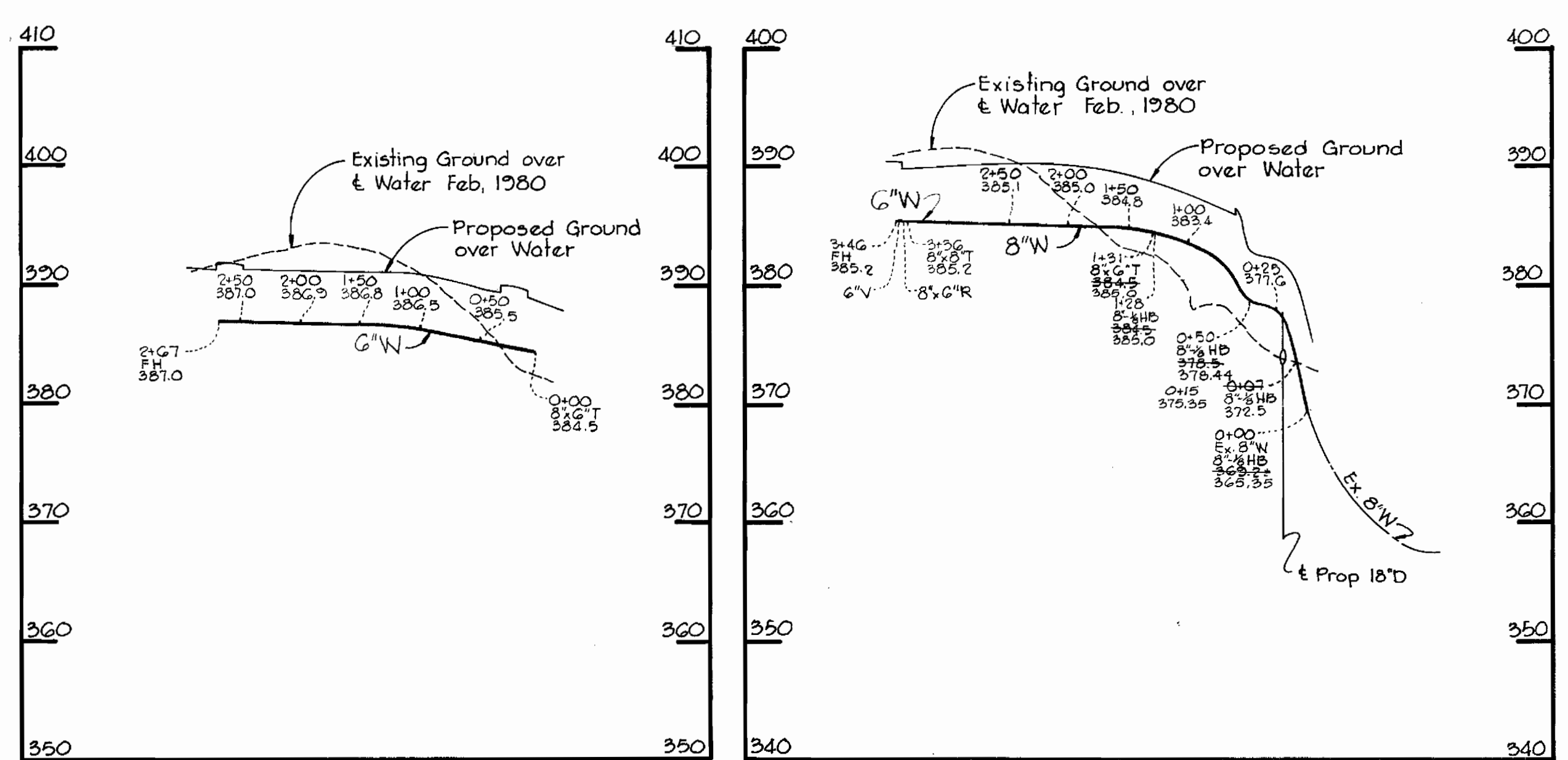
VICINITY MAP
Scale: 1"=600'

- ### GENERAL NOTES
- Approximate location of existing mains are shown. The Contractor shall take all necessary precautions to protect existing mains and services and maintain uninterrupted supply. Any damage incurred shall be repaired immediately to the satisfaction of the Engineer, at the Contractor's expense.
 - All horizontal controls are based on Maryland State Coordinates.
 - All vertical controls are based on U.S.G.S. Datum.
 - All pipe elevations shown are invert (I) elevations.
 - Clear all utilities by a minimum of 6'. Clear all poles by 2'-0" minimum or tunnel as required. Any cost incurred to the Contractor for tunneling or bracing at poles shall be included in unit prices bid for excavation and backfill.
 - For details not shown on the drawings use Howard County Standard Details.
 - For materials and construction methods use Howard County Standard Specifications.
 - The Contractor shall locate existing utilities a minimum of two (2) weeks in advance of construction operations in the vicinity of proposed utilities at his own expense.
 - The Contractor shall notify the following utilities or agencies at least five (5) working days before starting work shown on these plans:

a) State Highway Administration	531-5533
b) Baltimore Gas and Electric Company	
1) Underground Electric Distribution - Customer Service	685-0123
2) Underground Gas Distribution - Customer Service	685-0123
3) Engineering - Damage Control	234-5621
c) Miss Utility	1-553-0100
d) Chesapeake and Potomac Telephone Company	725-2976
e) American Telephone and Telegraph - Cable Location Division	393-3553
f) Colonial Pipeline Company	781-4641
g) Bureau of Utilities Howard County	992-2366
 - Trees are to be protected from damage to maximum extent. Trees located within the construction strip are not to be removed or damaged by the Contractor.
 - The Contractor shall remove trees, stumps and roots along line of excavation as directed by the Engineer. Payment for such removal shall be included in the unit price bid for excavation and backfill.
 - Place regulation "Men Working" and warning signs as required to comply with Maryland State Highway Administration Manual of Traffic Control for Highway Construction and Maintenance Operations.
 - All water mains to be C.I.P. or D.I.P. unless otherwise noted.
 - Top of all water mains to have a minimum of 3'-6" cover unless otherwise noted.
 - Valves adjacent to tees shall be strapped to tees.
 - Block all fittings with concrete.
 - Bury Line elevations on fire hydrants shall be set to the elevations shown on the drawings. All fire hydrants shall be strapped and buttressed with concrete in accordance with Standard Details. Soil around the fire hydrant to be compacted in accordance with Section 5-15 of the Standard Specifications.
 - All water house connections shall be for an inside meter setting.
 - The Contractor shall not operate any water main valves on the existing system.



PLAN
Scale: 1"=50'

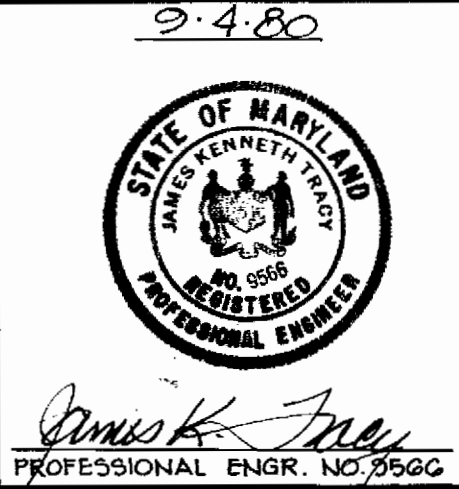


PROFILES
Horiz: 1"=100'
Vert: 1"=10'

SEDIMENT CONTROL MEASURES FOR THIS CONTRACT WILL BE IMPLEMENTED IN ACCORDANCE WITH SECTION 14 OF THE SPECIFICATIONS AND SITE DEVELOPMENT PLAN #SDP 60-140

HOWARD SOIL CONSERVATION DISTRICT:
REVIEWED FOR HOWARD SOIL CONSERVATION DISTRICT AND MEETS TECHNICAL REQUIREMENTS
DATE: 9-5-80
APPROVED BY: [Signature]
THIS PLAN IS APPROVED FOR SOIL EROSION AND SEDIMENT CONTROL BY THE HOWARD SOIL CONSERVATION DISTRICT
DATE: 9-5-80

Item	QUANTITIES		Material/Supplier
	Estimated	As Built	
Fire Hydrants	2	2	American Darling
8" Water	346 LF.	346	Atlantic States
6" Water	277 LF.	269	Atlantic States



RIEMER-TRACY & ASSOCIATES, INC. 8659 BALTIMORE NATIONAL PIKE ELLICOTT CITY, MARYLAND 21043 LAND PLANNING, DESIGN & CIVIL ENGINEERING	DEPARTMENT OF PUBLIC WORKS HOWARD COUNTY, MARYLAND Director: Henry F. Nunnery, 9-5-80 Chief, Bureau of Engineering: [Signature], 9/5/80 Chief, Bureau of Utilities: [Signature], 9/5/80	CONTRACT NO. 44-0936-D	PLAN AND PROFILES OF WATER MAINS	TWIN KNOLLS INN 6TH ELECTION DISTRICT HOWARD COUNTY, MARYLAND	DRAWING NO. 1 OF 1	SCALE AS SHOWN
--	--	----------------------------------	---	--	---------------------------------	--------------------------

As Built 7/16/81

SEPTEMBER 4, 1980