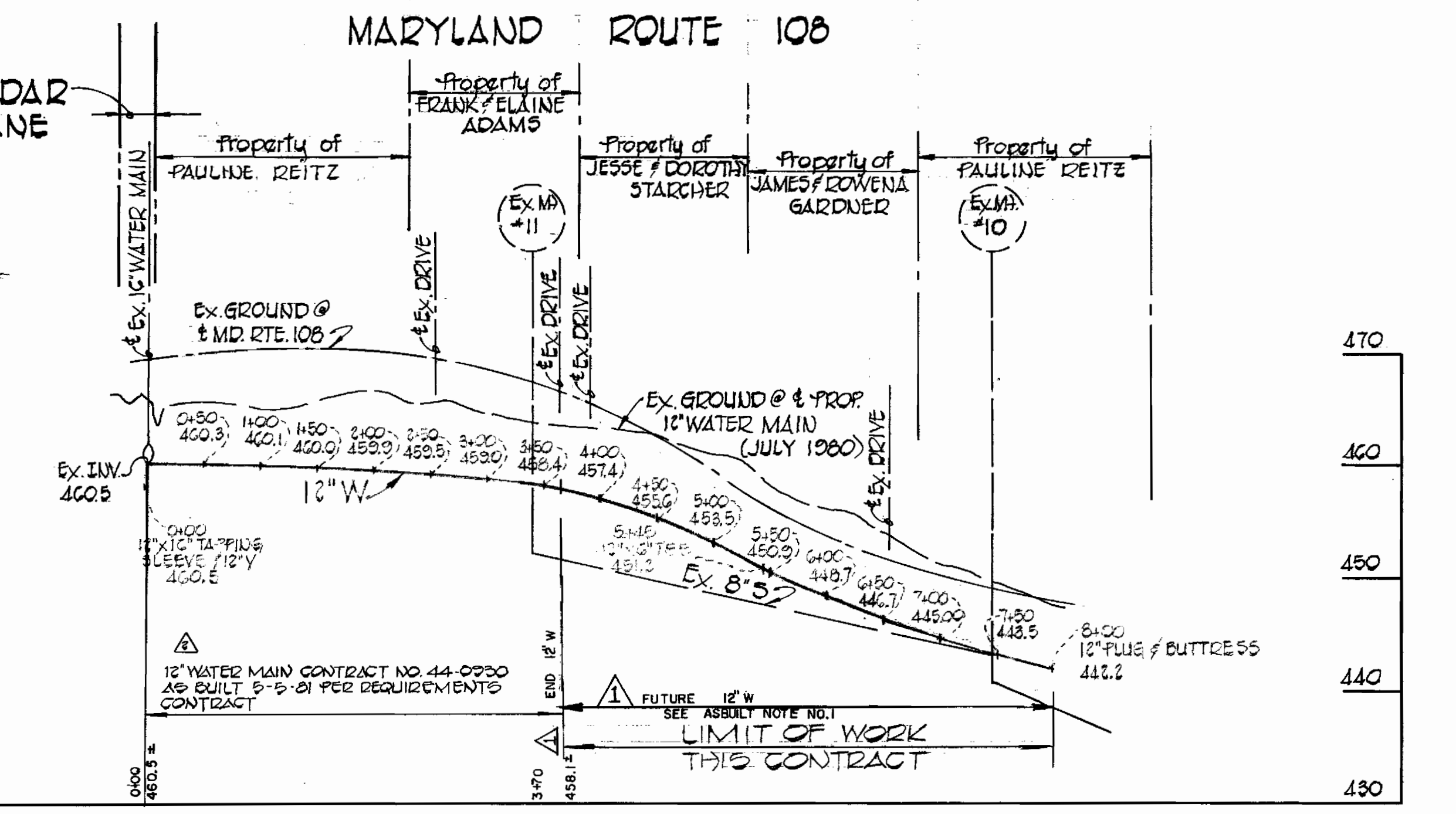
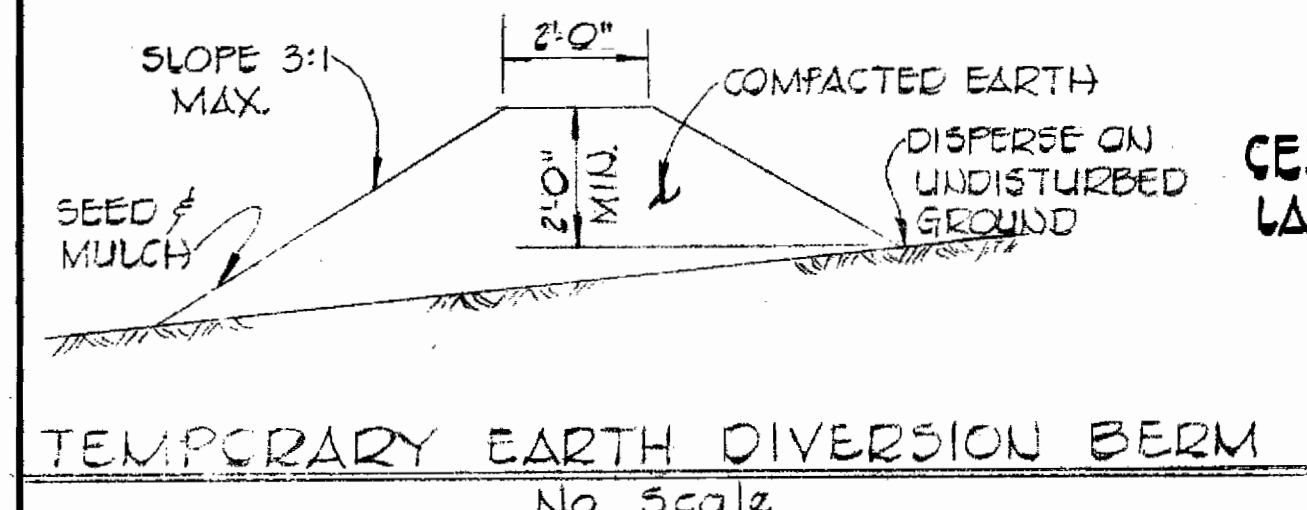


GENERAL NOTES

- APPROXIMATE LOCATIONS OF EXISTING UTILITIES ARE SHOWN. THE CONTRACTOR SHALL TAKE ALL NECESSARY PRECAUTIONS TO PROTECT EXISTING MAINS AND SERVICES AND MAINTAIN UNINTERRUPTED SUPPLY. ANY DAMAGE INCURRED SHALL BE REPAIRED IMMEDIATELY.
- ALL PIPE ELEVATIONS SHOWN ARE INVERT ELEVATIONS.
- THE CONTRACTOR SHALL LOCATE EXISTING UTILITIES A MINIMUM OF TWO WEEKS IN ADVANCE OF CONSTRUCTION OPERATIONS IN VICINITY OF UTILITIES.
- THE CONTRACTOR SHALL NOTIFY THE FOLLOWING UTILITIES OR AGENCIES AT LEAST FIVE (5) WORKING DAYS BEFORE STARTING WORK SHOWN ON THESE DRAWINGS:
BALTIMORE GAS & ELECTRIC CO. - UNDERGROUND ELECTRIC - (685-0123)
BALTIMORE GAS & ELECTRIC CO. - UNDERGROUND GAS - (685-0123)
C&P TELEPHONE CO. - (725-9976)
MISS UTILITY - (1-559-0100)
HOWARD COUNTY BUREAU OF UTILITIES - (992-2366)
- FOR ALL STANDARD DETAILS SEE STANDARDS BOUND IN SPECIFICATIONS.
- CLEAR ALL UTILITIES BY A MINIMUM OF 6" VERTICALLY, CLEAR ALL UTILITY POLES BY 2'-0" MINIMUM OR TUNNEL, AS REQUIRED. ANY COST INCURRED TO THE CONTRACTOR FOR TUNNELING OR BRACING POLES SHALL BE INCLUDED IN THE UNIT PRICE BID FOR EXCAVATION.
- BUTTRESS OR ANCHOR ALL WATER MAIN FITTINGS WITH CONCRETE. ALL VALVES SHALL BE STRAPPED TO TEES IN ACCORDANCE WITH STANDARD DETAILS.
- ALL WATER MAINS TO HAVE A MINIMUM OF 3'-6" COVER UNLESS OTHERWISE NOTED.
- ALL FIRE HYDRANTS SHALL BE STRAPPED TO THE TEE AND SHALL BE BUTTRESSED WITH CONCRETE IN ACCORDANCE WITH STANDARD DETAILS. COST OF STRAPPING FIRE HYDRANTS AND VALVES TO BE INCLUDED IN THE UNIT PRICE BID FOR FURNISHING AND INSTALLING FIRE HYDRANTS. SOIL AROUND THE FIRE HYDRANT TO BE COMPACTED IN ACCORDANCE WITH SECTION 5-15 OF THE HOWARD COUNTY STANDARD SPECIFICATIONS.
- BURY LINE ELEVATIONS ON FIRE HYDRANTS SHALL BE SET TO THE ELEVATIONS SHOWN ON THE DRAWINGS.
- ALL VERTICAL CONTROLS ARE BASED ON U.S.G.S. SYSTEM.
- ALL WATER MAINS TO BE C.I.P. OR D.I.P. UNLESS OTHERWISE NOTED.
- ALL WATER HOUSE CONNECTIONS SHALL BE FOR AN INSIDE METER SETTING.
- PLACE REGULATION "MEN WORKING" AND WARNING SIGNS AS REQUIRED TO COMPLY WITH MARYLAND STATE HIGHWAY ADMINISTRATION MANUAL OF TRAFFIC CONTROL FOR HIGHWAY CONSTRUCTION AND MAINTENANCE.
- SEDIMENT CONTROL MEASURES FOR THIS CONTRACT WILL BE IMPLEMENTED IN ACCORDANCE WITH SECTIONS 14- AND 14- OF THE SPECIFICATIONS.
- ALL HORIZONTAL CONTROL IS BASED ON MARYLAND STATE COORDINATE SYSTEM.



DIVERSION BERMS ARE REQUIRED EVERY 250 FEET ON CONTINUOUS SLOPES OF 4% OR GREATER. THE BERME SHALL CONFORM TO THE TYPICAL SECTION SHOWN HEREON AND SHALL BE CONSTRUCTED ACROSS THE CONSTRUCTION AREAS IMMEDIATELY AFTER THE BACKFILLING OF THE PIPE TRENCH AND PRIOR TO PLACING STABILIZATION IN ORDER TO PREVENT EROSION OF THE BACKFILLED AREAS.

TERRELL A. FISHER, PE #9757
 DEPARTMENT OF PUBLIC WORKS
 HOWARD COUNTY, MARYLAND

FISHER, COLLINS AND CARTER, INC.
 CIVIL ENGINEERS AND LAND SURVEYORS
 8388 COURT AVENUE
 ELLICOTT CITY, MARYLAND 21043

TYPE OF BUILDINGS: RESIDENTIAL
NUMBER OF PARCELS: 4
NUMBER OF WATER HOUSE CONNS.: 4
DRAINAGE AREA: LITTLE PATUXENT

VICINITY MAP
 SCALE: 1" = 600'

QUANTITIES			
ITEM	EST'D	AS BUILT	SUPPLIER
12" WATER	430 LF.	370 LF.	
FIRE HYD.	1 EA.		
F.H. VALVE	1 EA.		
6" WATER	32 LF.		
3/4" W.H.C.	30 LF.	10 LF.	

CONTRACT NO. 44-0930
 CAPITAL PROJECT W-0-8124
 MD. ROUTE 108 WATER MAIN EXTENSION
 HOWARD COUNTY, MARYLAND

W.O. 10112

CONTRACT NO. 44-0930
 CAPITAL PROJECT W-0-8124

PLAN, PROFILE & DETAIL
 WATER MAINS

MARYLAND ROUTE 108
 WATER MAIN EXTENSION
 ELECTION DISTRICT 5
 HOWARD COUNTY, MARYLAND

DRAWING NO. 1
 OF 1
 SCALE AS SHOWN
 DES. T.A.F.
 DRN. T.A.F.
 CHK. E.D.C.

AUGUST 23, 1982