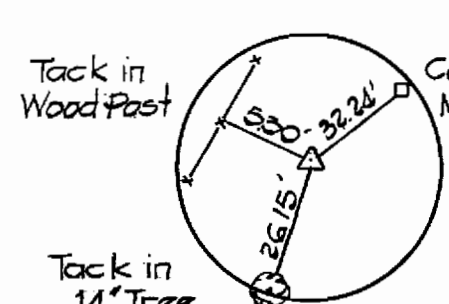
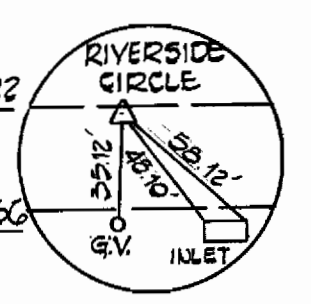


**BENCH MARKS**

B.M. 'GA-5' ELEV. 340.22  
R.R. SPIKE SET AS TRAVERSE STATION P.I. 'GA-5'

B.M. 'GA-6' ELEV. 350.80  
P.K. NAIL SET AS TRAVERSE STATION P.I. 'GA-6'



P.I. 'GA-5' R.R. SPIKE SET

P.I. 'GA-6' P.K. NAIL SET

P.I. 'GA-7' HUB SET

P.I. 'GA-8' P.K. NAIL SET

P.I. 'GA-9' HUB SET

P.I. 'GA-10' P.K. NAIL SET

P.I. 'GA-11' HUB SET

P.I. 'GA-12' P.K. NAIL SET

P.I. 'GA-13' HUB SET

P.I. 'GA-14' P.K. NAIL SET

P.I. 'GA-15' HUB SET

P.I. 'GA-16' P.K. NAIL SET

P.I. 'GA-17' HUB SET

P.I. 'GA-18' P.K. NAIL SET

P.I. 'GA-19' HUB SET

P.I. 'GA-20' P.K. NAIL SET

Property of THE GWYNN DEVELOPMENT COMPANY 771/218

GWYNN DEVELOPMENT REVISED SECTION THREE P.B. 6, F.85

GWYNN DEVELOPMENT REVISED SECTION THREE REVISION OF LOT 24 AND ADDITION TO LOTS 23 & 34 CONCRETE EXHAUSEMENT MON. FOUND.

NOTE: LOT 16 CONTRACTOR SHALL REMOVE EX. 8" PLUG & BUTTRESS & CONNECT TO 8" EX. 20" R/W FOR A WATER MAIN. WATER MAIN, P.D. 0550

GWYNN ACRES SECTION 15 P.B. 3650

NOTE: CONTRACTOR SHALL REMOVE EX. 8" PLUG & CONNECT TO 8" WATER MAIN. LOT 47

SECTION ONE GWYNN ACRES P.B. 2, E.2

100 YEAR FLOOD PLAIN / SEWER UTILITY RESERVATION

ROCK FORD W/ SILT FENCE SEDIMENT TRAP SEE DETAIL THIS SHEET LOT 10

EX. 20' RIGHT OF WAY FOR A SEWER MAIN

10' TREE TACK SET

EX. 8" PLUG

EX. 8" PLUG

EX. 8" PLUG

EX. 8" PLUG

EX. 8" PLUG

EX. 8" PLUG

EX. 8" PLUG

EX. 8" PLUG

EX. 8" PLUG

EX. 8" PLUG

EX. 8" PLUG

EX. 8" PLUG

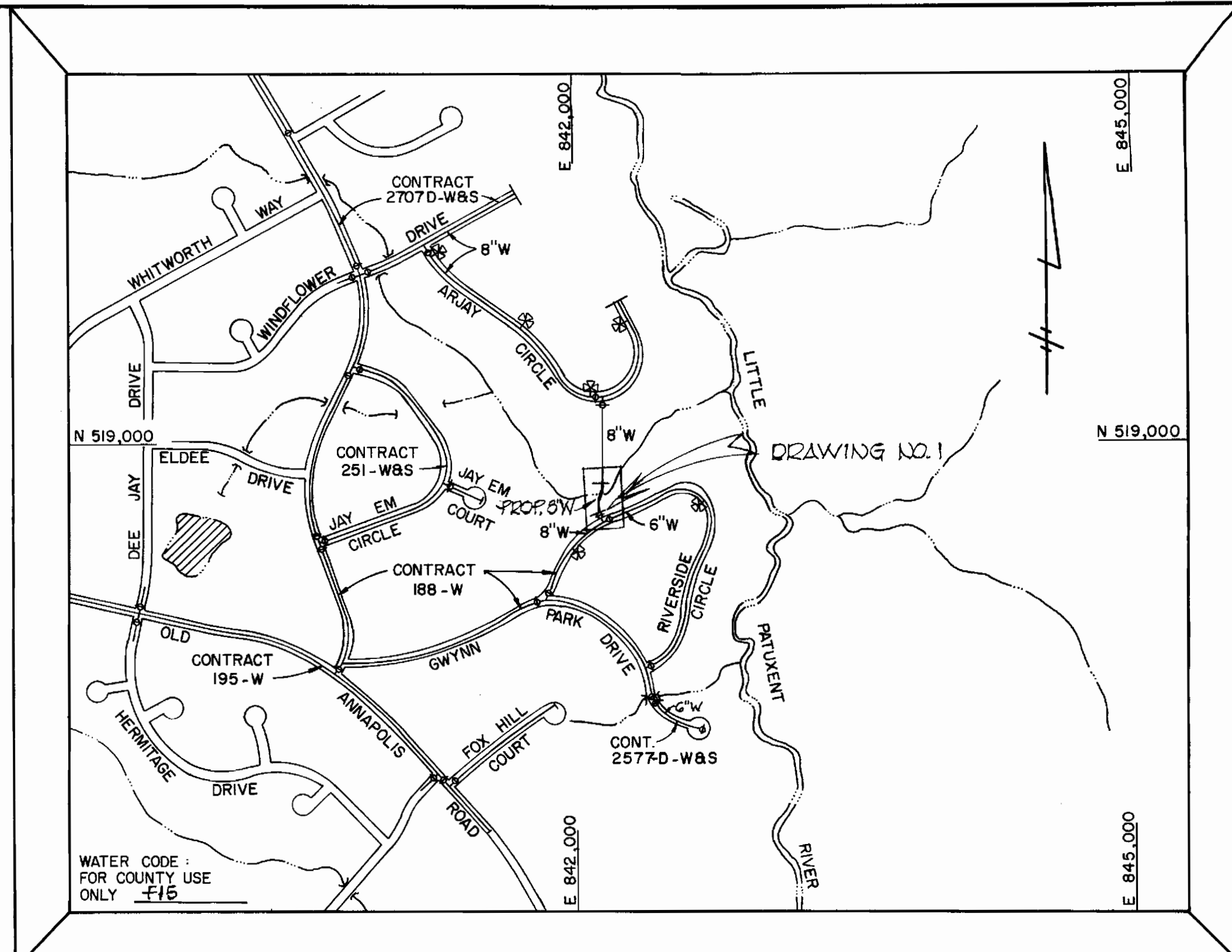
EX. 8" PLUG

EX. 8" PLUG

EX. 8" PLUG

EX. 8" PLUG

EX. 8" PLUG

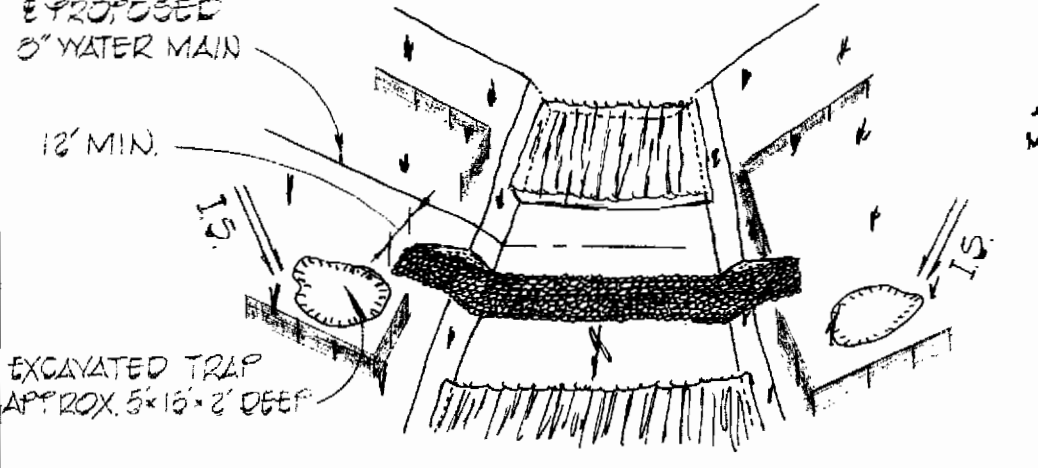


TYPE OF BUILDINGS:	NONE
NUMBER OF LOTS:	NONE
NUMBER OF WATER HOUSE CONNS.:	NONE
DRAINAGE AREA:	LITTLE PATUXENT

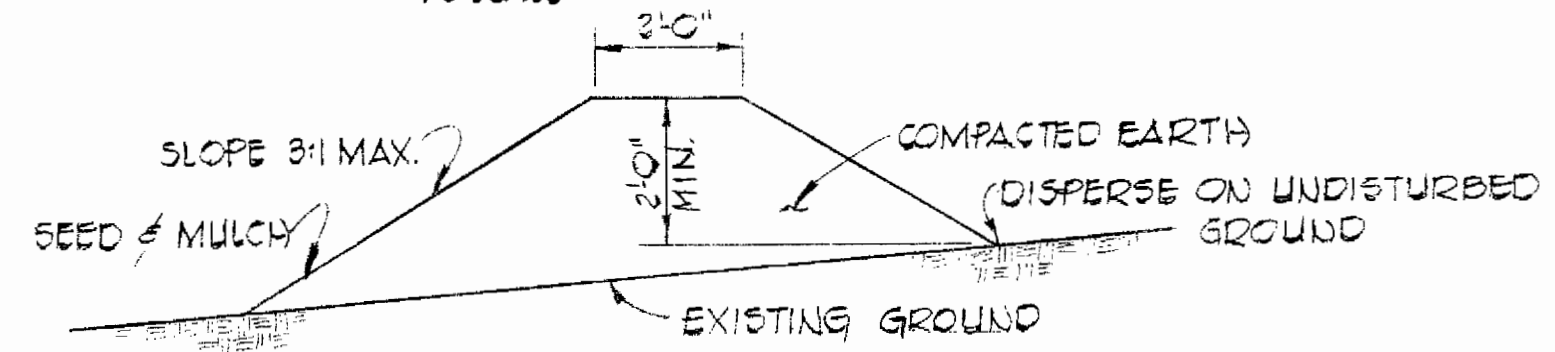
VICINITY MAP  
SCALE: 1" = 600'

**GENERAL NOTES**

- APPROXIMATE LOCATIONS OF EXISTING UTILITIES ARE SHOWN. THE CONTRACTOR SHALL TAKE ALL NECESSARY PRECAUTIONS TO PROTECT EXISTING MAINS AND SERVICES AND MAINTAIN UNINTERRUPTED SUPPLY. ANY DAMAGE INCURRED SHALL BE REPAIRED IMMEDIATELY.
- ALL PIPE ELEVATIONS SHOWN ARE INVERT ELEVATIONS.
- THE CONTRACTOR SHALL LOCATE EXISTING UTILITIES A MINIMUM OF TWO WEEKS IN ADVANCE OF CONSTRUCTION OPERATIONS IN VICINITY OF UTILITIES.
- THE CONTRACTOR SHALL NOTIFY THE FOLLOWING UTILITIES OR AGENCIES AT LEAST FIVE (5) WORKING DAYS BEFORE STARTING WORK SHOWN ON THESE DRAWINGS.  
BALTIMORE GAS & ELECTRIC CO. - UNDERGROUND ELECTRIC - (685-0123)  
BALTIMORE GAS & ELECTRIC CO. - UNDERGROUND GAS - (685-0123)  
C&P TELEPHONE CO. - (725-9976)  
MISS UTILITY - (1-559-0100)  
HOWARD COUNTY BUREAU OF UTILITIES - (992-2366)
- FOR ALL STANDARD DETAILS SEE STANDARDS BOUND IN SPECIFICATIONS.
- CLEAR ALL UTILITIES BY A MINIMUM OF 6" VERTICALLY, CLEAR ALL UTILITY POLES BY 2'-0" MINIMUM OR TUNNEL, AS REQUIRED. ANY COST INCURRED TO THE CONTRACTOR FOR TUNNELING OR BRACING POLES SHALL BE INCLUDED IN THE UNIT PRICE BID FOR EXCAVATION.
- BUTTRESS OR ANCHOR ALL WATER MAIN FITTINGS WITH CONCRETE. ALL VALVES SHALL BE STRAPPED TO TEES IN ACCORDANCE WITH STANDARD DETAILS.
- ALL WATER MAINS TO HAVE A MINIMUM OF 3'-6" COVER UNLESS OTHERWISE NOTED.
- ALL FIRE HYDRANTS SHALL BE STRAPPED TO THE TEE AND SHALL BE BUTTRESSED WITH CONCRETE IN ACCORDANCE WITH STANDARD DETAILS. COST OF STRAPPING FIRE HYDRANTS AND VALVES TO BE INCLUDED IN THE UNIT PRICE BID FOR FURNISHING AND INSTALLING FIRE HYDRANTS. SOIL AROUND THE FIRE HYDRANT TO BE COMPACTED IN ACCORDANCE WITH SECTION 5-15 OF THE HOWARD COUNTY STANDARD SPECIFICATIONS.
- BURY LINE ELEVATIONS ON FIRE HYDRANTS SHALL BE SET TO THE ELEVATIONS SHOWN ON THE DRAWINGS.
- ALL HORIZONTAL CONTROLS ARE BASED ON THE MARYLAND STATE COORDINATE SYSTEM.
- ALL WATER MAINS TO BE C.I.P. OR D.I.P. UNLESS OTHERWISE NOTED.
- ALL WATER HOUSE CONNECTIONS SHALL BE FOR AN INSIDE METER SETTING.
- PLACE REGULATION "MEN WORKING" AND WARNING SIGNS AS REQUIRED TO COMPLY WITH MARYLAND STATE HIGHWAY ADMINISTRATION MANUAL OF TRAFFIC CONTROL FOR HIGHWAY CONSTRUCTION AND MAINTENANCE.
- SEDIMENT CONTROL MEASURES FOR THIS CONTRACT WILL BE IMPLEMENTED IN ACCORDANCE WITH SECTIONS 14- AND 14- OF THE SPECIFICATIONS.
- ALL VERTICAL CONTROLS ARE BASED ON U.S.G.S. SYSTEM.
- CONTRACTOR SHALL REMOVE TREES, STUMPS AND ROOTS ALONG LINE OF EXCAVATION AS DIRECTED BY THE ENGINEER. PAYMENT FOR SUCH REMOVAL SHALL BE INCLUDED IN THE UNIT PRICE BID FOR EXCAVATION AND BACKFILL.



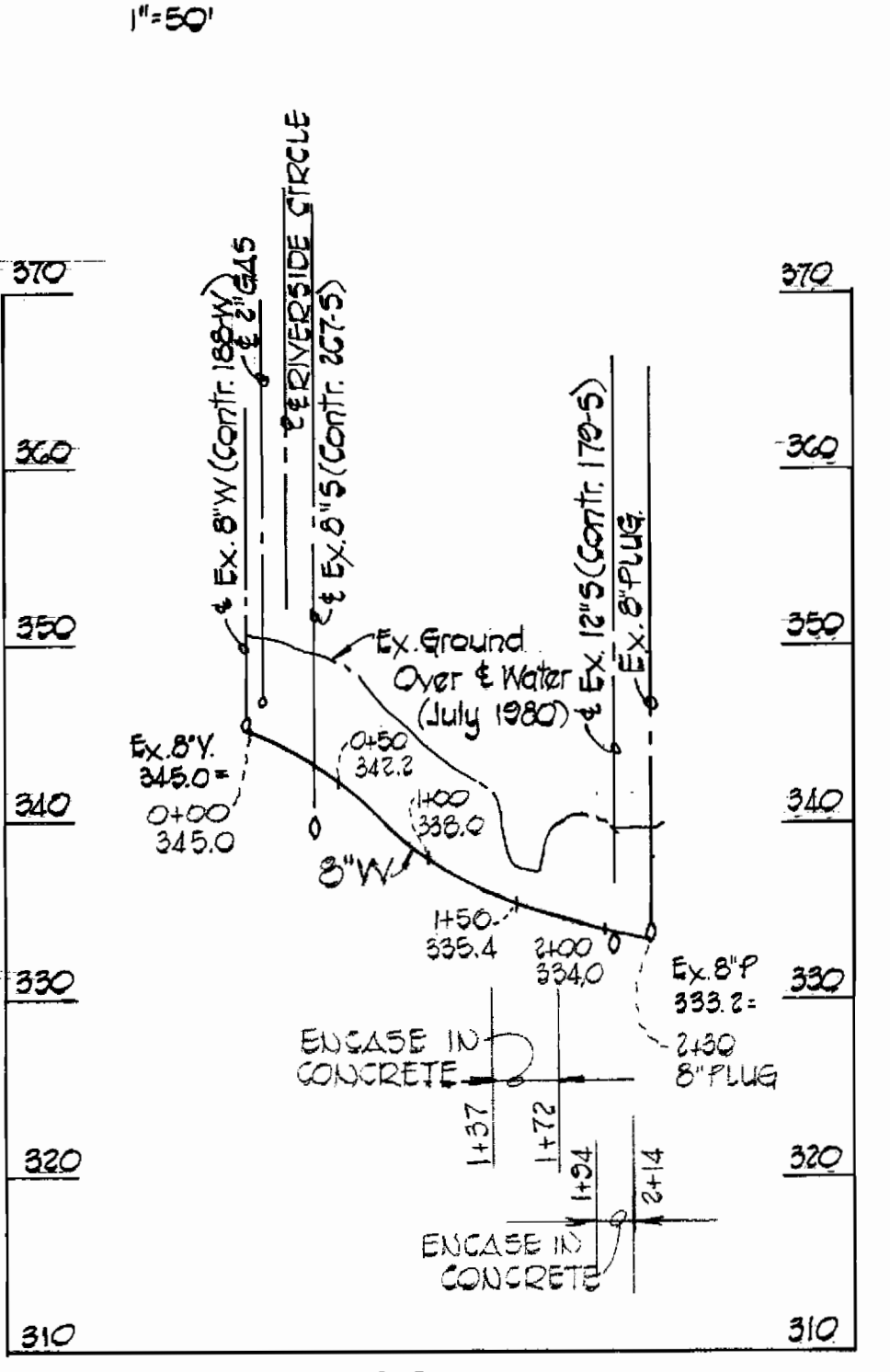
**ROCK FORD WITH SILT FENCE**  
NO SCALE



**TEMPORARY EARTH DIVERSION BERM**  
NO SCALE

NOTE: DIVERSION BERMS ARE REQUIRED EVERY 50' ON CONTINUOUS SLOPES OF 2% OR GREATER. THE BERMS SHALL CONFORM TO THE TYPICAL SECTION SHOWN HEREON. THEY SHALL BE CONSTRUCTED ACROSS THE CONSTRUCTION AREAS IMMEDIATELY AFTER THE BACKFILLING OF THE PIPE TRENCH AND PRIOR TO PLACING STABILIZATION IN ORDER TO PREVENT EROSION OF THE BACKFILLED AREAS.

**PLAN**  
1" = 50'

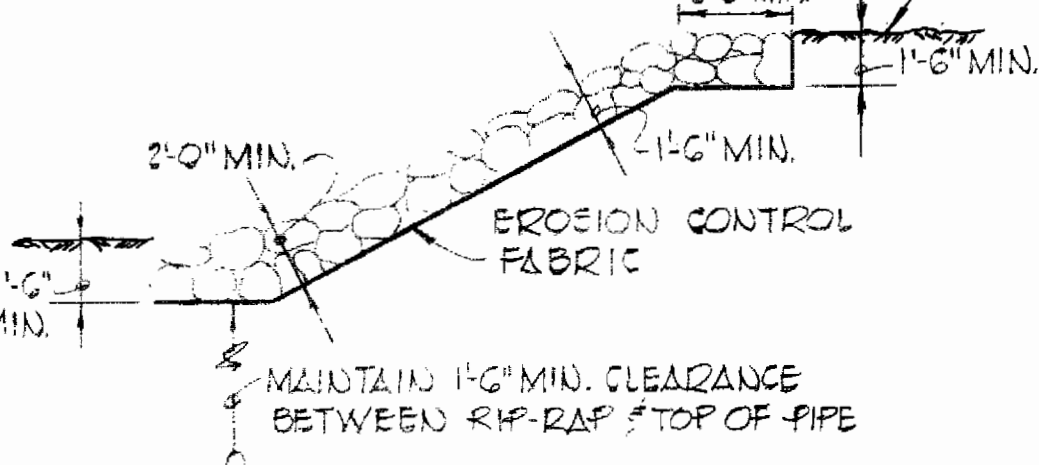


**PROFILES**  
SCALE: HOR: 1" = 100'  
VERT: 1" = 10'

**NOTES:**

RIP-RAP TO CONSIST OF DENSE ROCKS OF RANDOM SHAPE & SIZES, RESISTANT TO THE ACTION OF AIR AND WATER AND SUITABLE FOR BANK PROTECTION. ALL ROCKS SHALL WEIGH A MINIMUM OF 75 POUNDS.

EROSION CONTROL FABRIC SHALL BE POLY FILTER-X AS MANUFACTURED BY CARTHAGE MILLS, INC. OR PERMEALINER M-1195 AS MANUFACTURED BY STAFF INDUSTRIES, INC. OR EQUAL.



**LOOSE-LAID RIP RAP**  
NO SCALE

QUANTITIES			
ITEM	EST'D	AS BUILT	SUPPLIER
8" WATER	230 LF	230 LF	GRIFFIN
FLASH FIRE HYDRANT	1	1	DRESSER

CONTRACT NO. 44-0929  
CAPITAL PROJECT: W-0-8106  
GWYNN ACRES WATER MAIN  
HOWARD COUNTY, MARYLAND

STATE OF MARYLAND  
DEPARTMENT OF PUBLIC WORKS  
HOWARD COUNTY, MARYLAND

9/13/81  
9/13/81  
9/13/81

TERRELL A. FISHER, P.E. NO. 9757

FISHER, COLLINS AND CARTER, INC.  
CIVIL ENGINEERS AND LAND SURVEYORS  
8388 COURT AVENUE  
ELLCOTT CITY, MARYLAND 21043

CONTRACT NO. 44-0929  
CAPITAL PROJECT: W-0-8106

PLAN, PROFILE & DETAIL  
WATER MAIN

GWYNN ACRES  
WATER MAIN  
ELECTION DISTRICT 2  
HOWARD COUNTY, MARYLAND

DRAWING NO. 1  
SCALE AS SHOWN  
DES. T.A.F.  
DRN. D.O.S.  
CHK. T.A.F.

AUGUST 14, 1980  
AS-BUILT DEC. 15, 1981

WS 929-WS/1