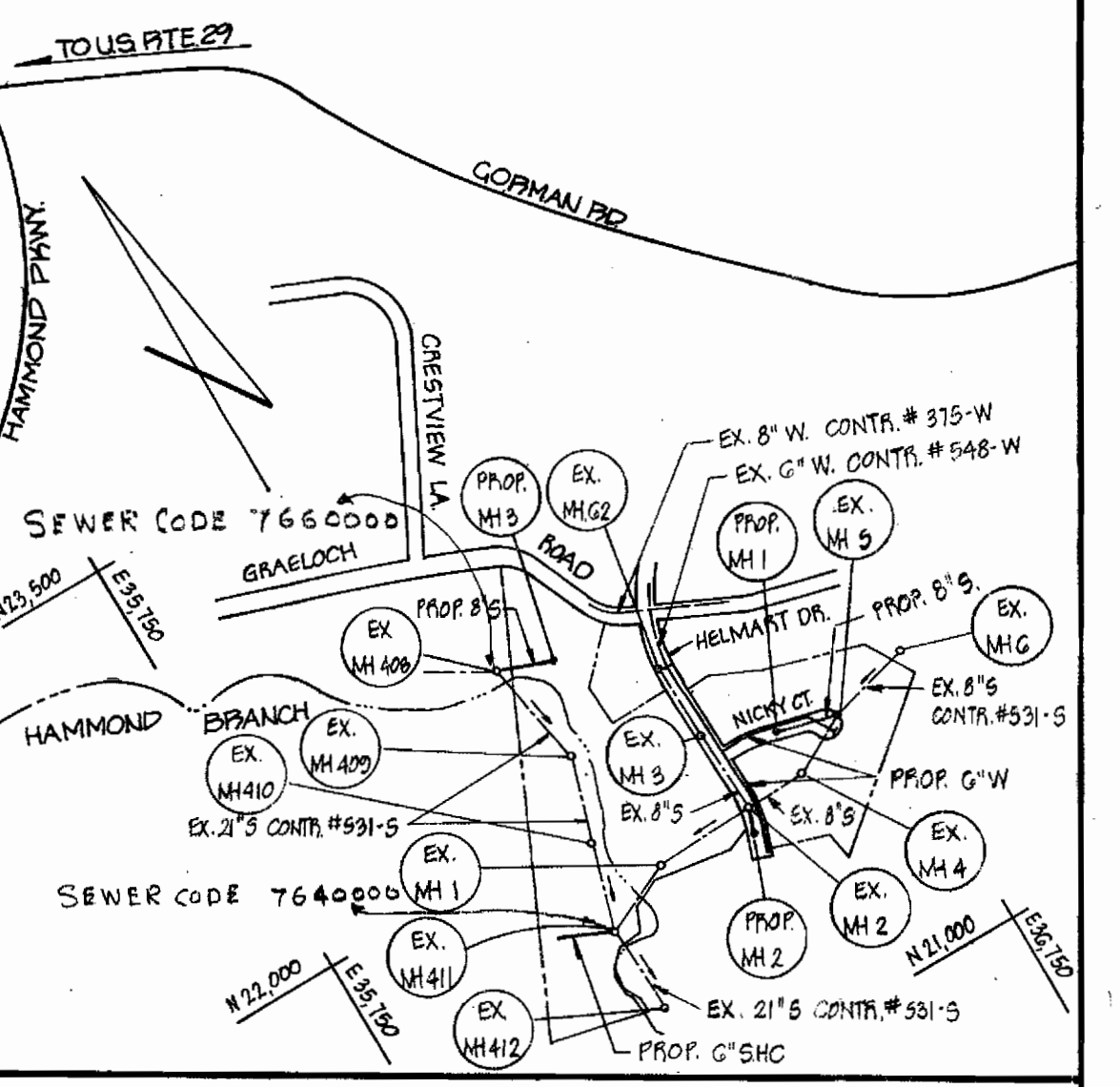


TYPE OF BUILDINGS - SINGLE FAMILY DWELLING
NUMBER OF LOTS - 27
NUMBER OF WATER HOUSE CONNECTIONS - 27
NUMBER OF SEWER HOUSE CONNECTIONS - 27
DRAINAGE AREA - SAVAGE



VICINITY MAP  
SCALE: 1"=600'

WATER AND SEWER CODE
SEWER 766000 HM-405
SEWER 764000 HM-411
WATER E 17

- GENERAL NOTES**
- APPROXIMATE LOCATIONS OF EXISTING MAINS ARE SHOWN. THE CONTRACTOR SHALL TAKE ALL NECESSARY PRECAUTIONS TO PROTECT THE EXISTING MAINS AND SERVICES AND MAINTAIN UNINTERRUPTED SERVICE. ANY DAMAGE INCURRED SHALL BE REPAIRED IMMEDIATELY.
  - ALL PIPE ELEVATIONS SHOWN ARE INVERT ELEVATIONS, UNLESS OTHERWISE NOTED.
  - THE CONTRACTOR SHALL LOCATE EXISTING UTILITIES A MINIMUM OF TWO WEEKS IN ADVANCE OF CONSTRUCTION OPERATIONS IN VICINITY OF UTILITIES.
  - FOR ALL STANDARD DETAILS SEE STANDARDS BOUND IN SPECIFICATIONS.
  - ALL SEWER PIPE SHALL BE V.C.P. OR ASBESTOS CEMENT CLASS 2400 UNLESS OTHERWISE NOTED.
  - ALL MANHOLES SHALL BE 4'-0" INSIDE DIAMETER.
  - HOUSE CONNECTIONS SHALL BE CONSTRUCTED ONLY WHERE AND IF DIRECTED BY THE ENGINEER IN THE FIELD.
  - ALL WATER MAINS ARE TO BE C.I.P. OR D.I.P. AND HAVE A MINIMUM OF 3.5' OF COVER.
  - BLOCK ALL FITTINGS WITH CONCRETE, SEE STANDARD DETAILS BOUND IN SPECIFICATIONS.
  - BURY LINE ELEVATION AT FIRE HYDRANTS SHALL BE SET TO ELEVATION SHOWN ON DRAWING.
  - ALL FIRE HYDRANTS SHALL BE STRAPPED AND BUTTRESSED IN ACCORDANCE WITH STANDARD DETAILS.
  - SOIL AROUND THE FIRE HYDRANTS SHALL BE COMPACTED IN ACCORDANCE WITH SECTION 5-15 OF THE STANDARD SPECIFICATIONS.
  - CLEAR ALL UTILITIES BY A MINIMUM OF 6'. CLEAR ALL POLES BY 2'-0" MINIMUM OR TUNNEL AS REQUIRED.
  - THE CONTRACTOR SHALL PROVIDE A JOINT IN ALL SEWER MAINS WITHIN 2'-0" OF EXTERIOR MANHOLE WALLS.
  - COST OF STRAPPING FIRE HYDRANTS AND VALVES TO BE INCLUDED IN THE UNIT PRICE BID FOR FURNISHING AND LAYING OF WATER MAINS.
  - ELEVATIONS ARE BASE UPON MARYLAND STATE DATUM. COORDINATE VALVES SHOWN ON DRAWING ARE THE MARYLAND GRID SYSTEM.
  - WATER SERVICE SHALL BE FOR INSIDE METER SETTING.
  - MINIMUM CELLAR ELEVATIONS SHOWN ARE THE MINIMUM ELEVATIONS WHICH CAN BE SERVED BY SEWER MAINS.
  - THE CONTRACTOR SHALL NOTIFY THE FOLLOWING UTILITIES OR AGENCIES FIVE (5) DAYS BEFORE STARTING WORK SHOWN ON THESE PLANS: BALTIMORE GAS AND ELECTRIC COMPANY, UNDERGROUND ELECTRIC 234-5691, UNDERGROUND GAS 559-0100, C & P TELEPHONE COMPANY 727-9976, MISS UTILITY 393-3648.
  - TWIN W.H.C. SHALL BE COMPOSED OF 1" COPPER FROM THE 'Y' BRANCH AND 5' OF 3/4" COPPER TO EACH CURB SERVICE BOX. SEE STANDARD W-50 BOUND IN SPECIFICATIONS. CURB STOP TO BE SET 5' OFF OF PROPERTY LINE.
  - TREES ARE TO BE PROTECTED FROM DAMAGE TO MAXIMUM EXTENT. TREES LOCATED WITHIN THE CONSTRUCTION STRIP ARE NOT TO BE REMOVED OR DAMAGED BY THE CONTRACTOR.
  - CONTRACTOR SHALL REMOVE TREES, STUMPS AND ROOTS ALONG LINE OF EXCAVATION AS DIRECTED BY THE ENGINEER. PAYMENT FOR SUCH REMOVAL SHALL BE INCLUDED IN THE UNIT PRICE BID FOR EXCAVATION AND BACKFILL FOR WATER AND SEWER MAINS.
  - PLACE REGULATION "MEN WORKING" AND WARNING SIGNS AS REQUIRED TO COMPLY WITH MARYLAND STATE HIGHWAY ADMINISTRATION MANUAL OF TRAFFIC CONTROL FOR HIGHWAY CONSTRUCTION AND MAINTENANCE OPERATIONS.

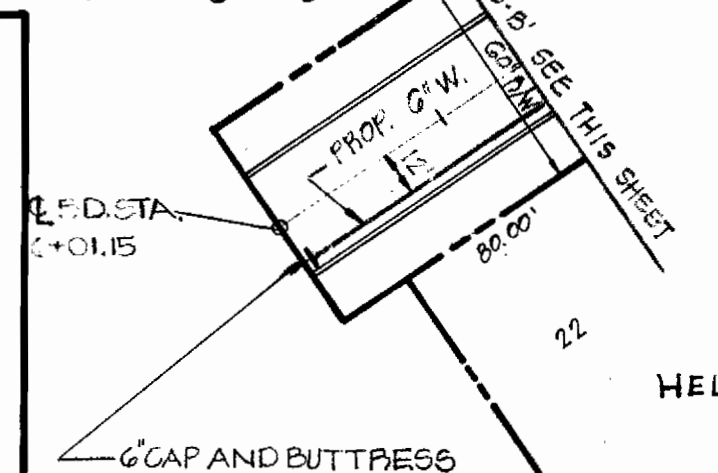
SEDIMENT CONTROL MEASURES FOR THIS CONTRACT WILL BE IMPLEMENTED IN ACCORDANCE WITH SECTION 14 OF THE SPECIFICATIONS AND ROAD CONSTRUCTION PLAN F-80-103

REVIEWED FOR HOWARD S.C.D. AND MEETS TECHNICAL REQUIREMENTS

*James McNeil* 9-8-80  
U.S. SOIL CONSERVATION SERVICE DATE

THIS DEVELOPMENT IS APPROVED SOIL EROSION AND SEDIMENT CONTROL BY THE HOWARD SOIL CONSERVATION DISTRICT.

*William J. Rowe* 9-8-80  
HOWARD SOIL CONSERVATION DISTRICT DATE



3-45-81	ADDED CONC. ENCASUREMENT + F.H.
2-27-81	REV. D.H.C. + SEWER EASEMENT
2-11-81	REVISED S.H.C. TO LOT 27
DATE	REVISION

DEPARTMENT OF PUBLIC WORKS  
HOWARD COUNTY, MARYLAND

*James M. Clum* 9/10/80  
DIRECTOR OF PUBLIC WORKS DATE

*William J. Rowe* 9/8/80  
CHIEF, BUREAU OF UTILITIES DATE

*William J. Rowe* 9-8-80  
CHIEF, BUREAU OF UTILITIES DATE

*William J. Rowe* 9-8-80  
BRIEF, LAND DEVELOPMENT DIVISION DATE

**BOENDER ASSOCIATES, INC.**  
ENGINEERS, PLANNERS, SURVEYORS  
BALTIMORE, MD. SALISBURY, MD.  
465-7777 749-1286

CONTRACT NO. 24-0924-D

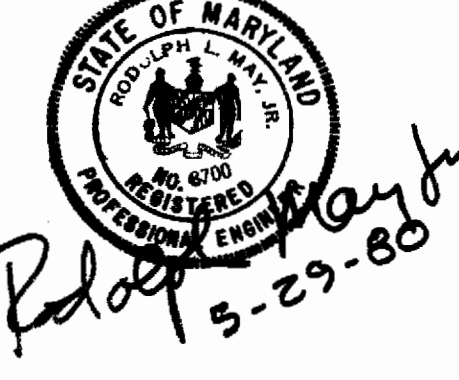
WATER AND SEWER PLANS  
HAMMOND VILLAGE - SECTION B

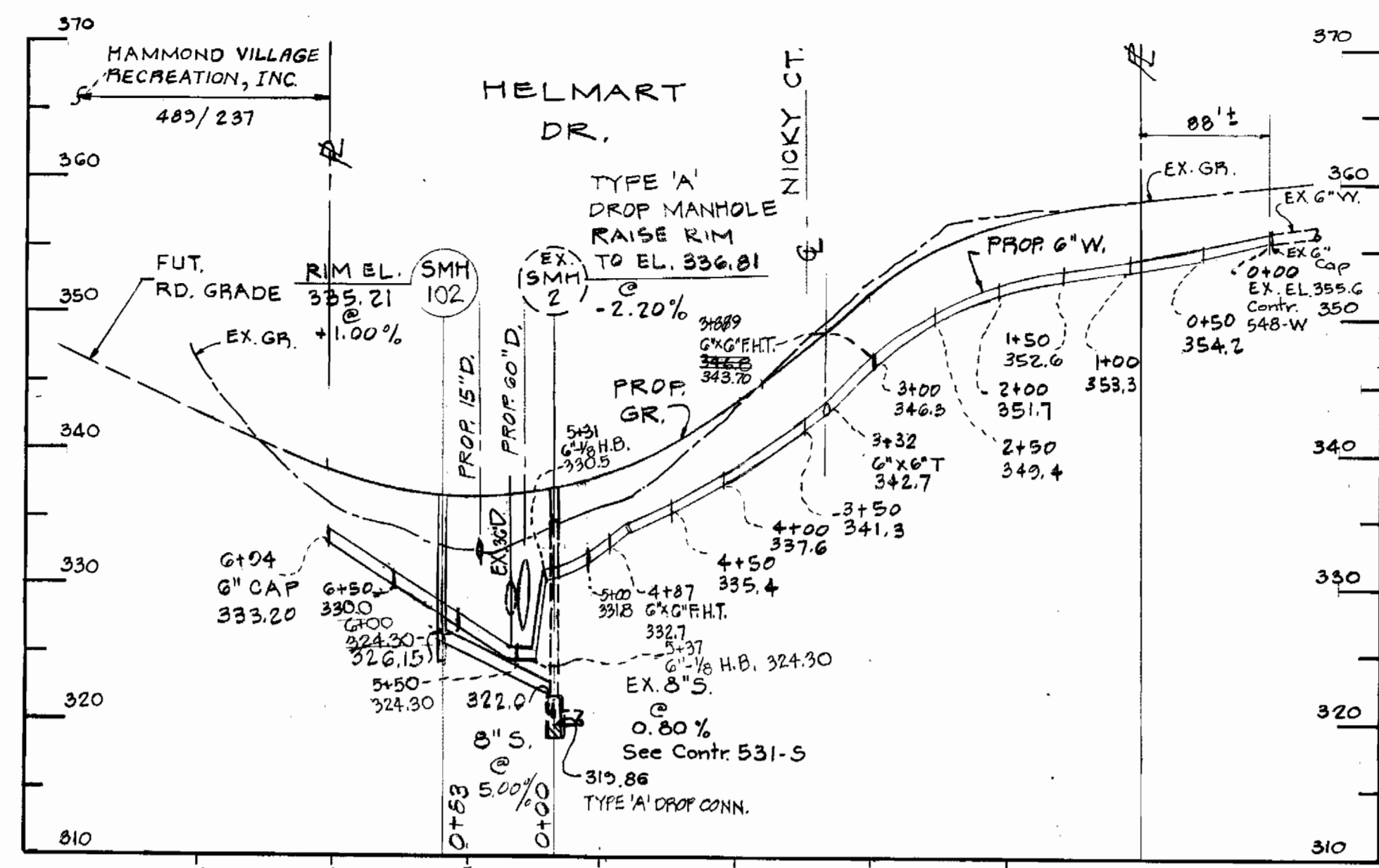
HAMMOND VILLAGE SEC B  
ELECTION DISTRICT NO. 6

DRAWING NO. 1 OF 2  
SCALE AS SHOWN

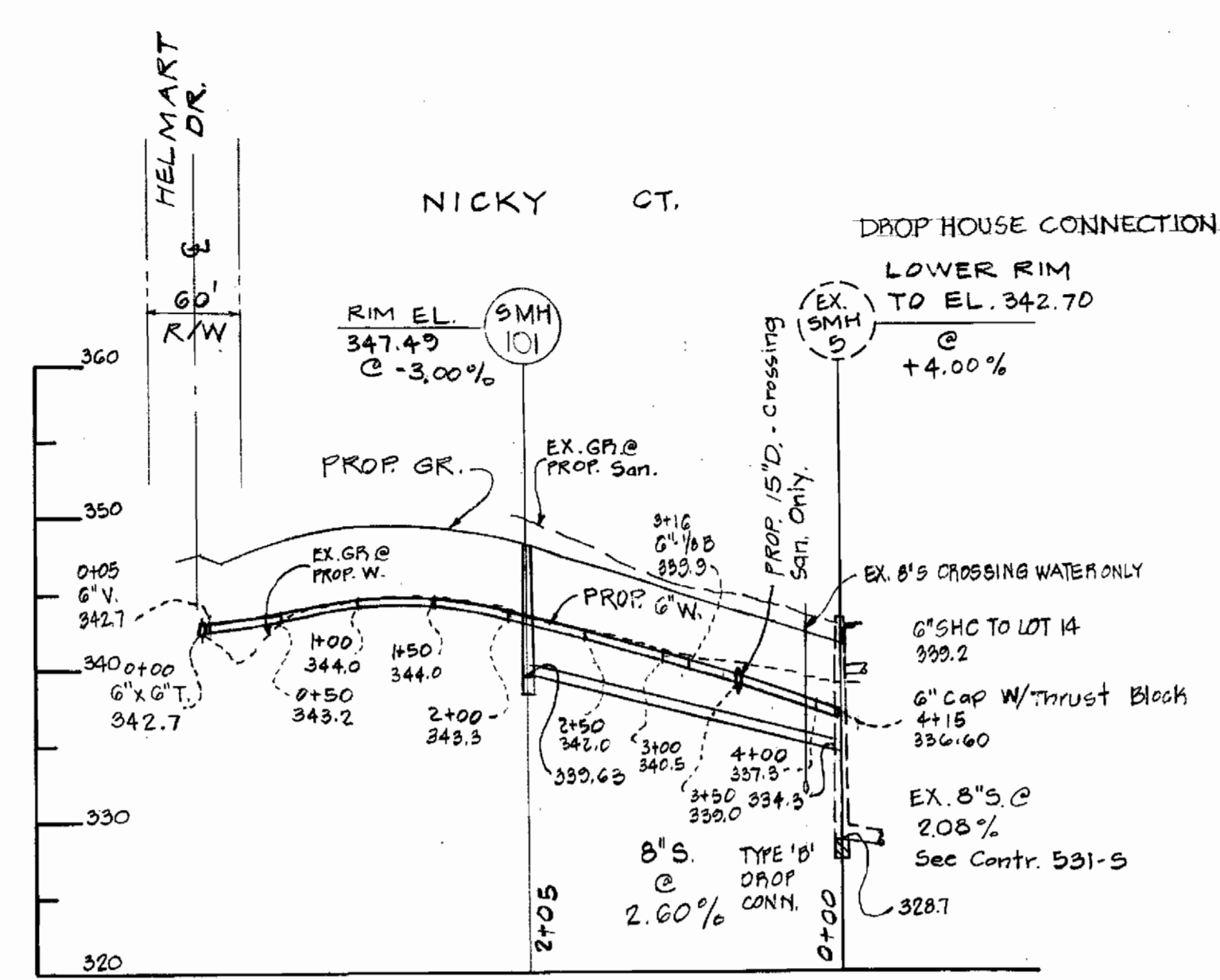
QUANTITIES			
ITEM	ESTIMATED	AS BUILT	MATERIAL/SUPPLIER
8" SEWER	478 LF.	472 LF.	TRANSITE CL 2400
MANHOLES	3	3	
6" WATER	1135 LF.	1,142 LF.	GRIFFIN D.I.P.
6" VALVES	3	3	M&H
FIRE HYDRANTS	2	2	M&H

23. NOTIFY THE BUREAU OF UTILITIES, HOWARD COUNTY, PHONE 992-2366, PRIOR TO MAKING ANY TIE ON THE EXISTING WATER AND SEWER SYSTEM.

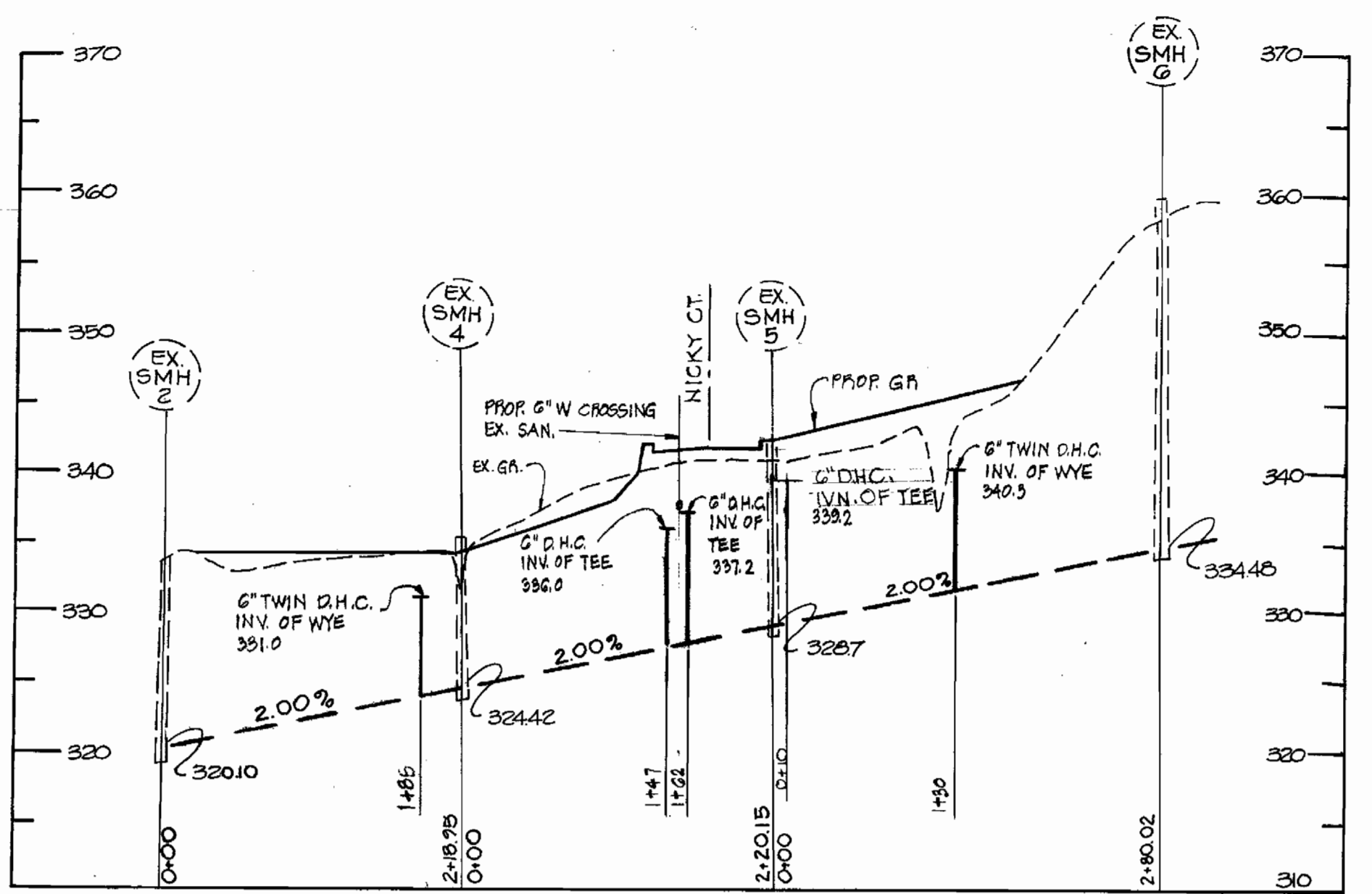




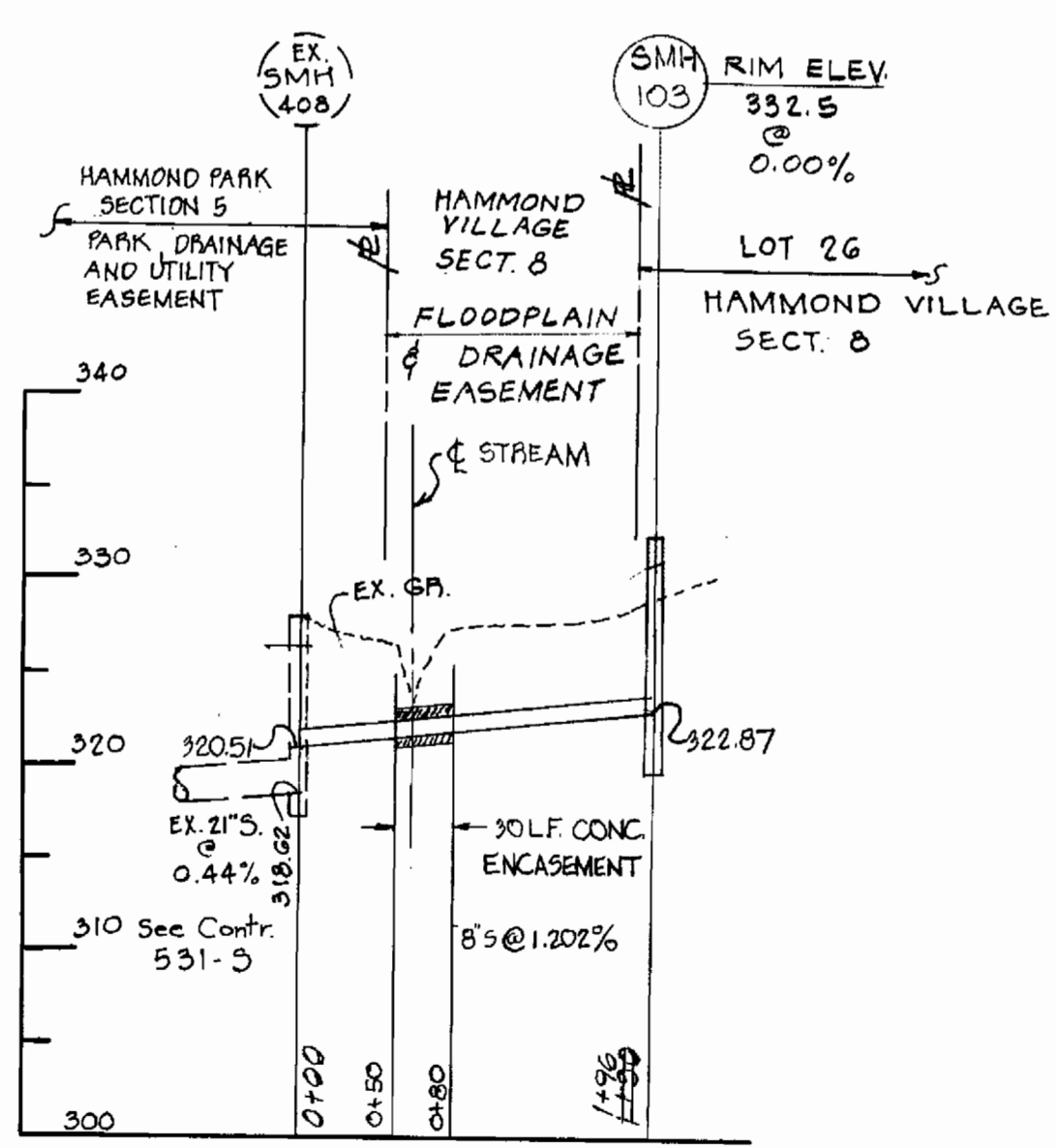
SCALE: HOR: 1" = 100'  
VER: 1" = 10'



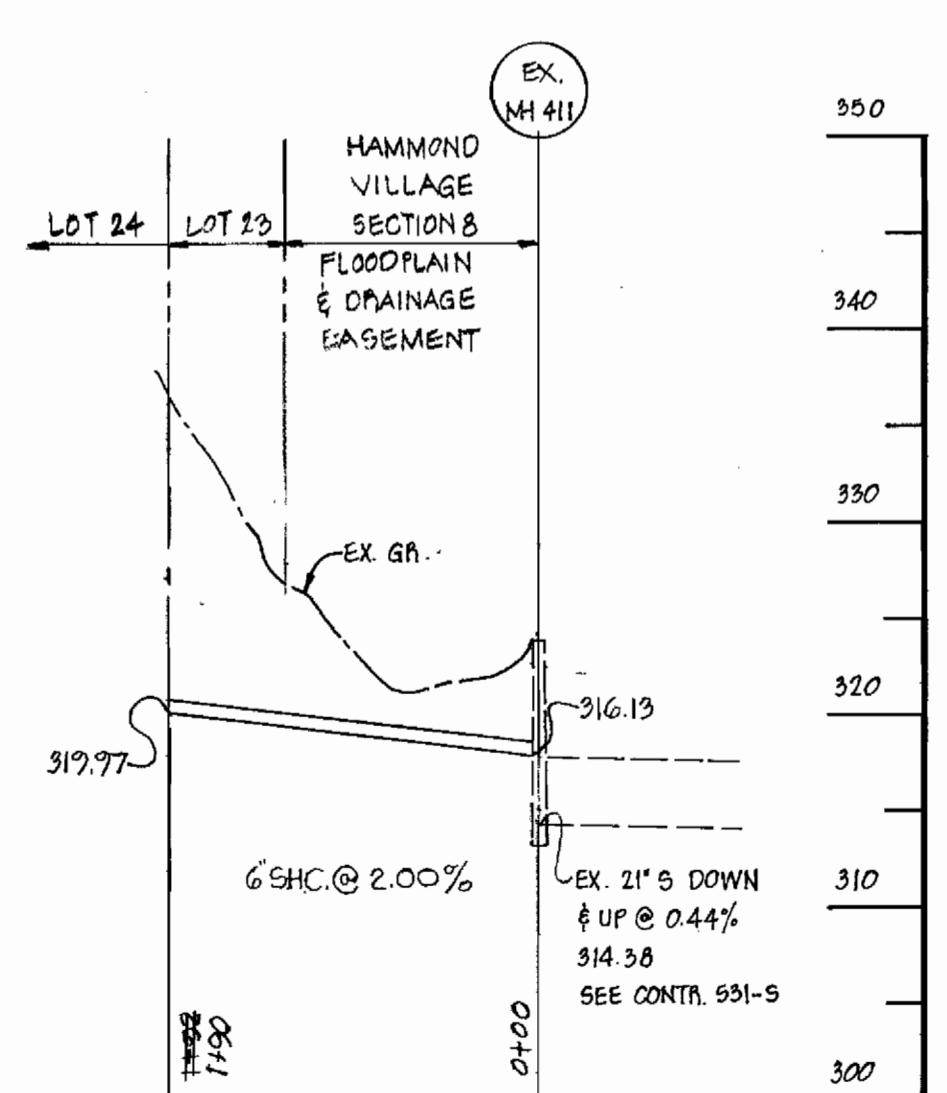
SCALE: HOR: 1" = 100'  
VER: 1" = 10'



SCALE: HOR: 1" = 100'  
VER: 1" = 10'



SCALE: HOR: 1" = 100'  
VER: 1" = 10'



SCALE: HOR: 1" = 100'  
VERT: 1" = 10'



Rodolph May Jr.  
5-29-80

3-25-81	REVISED S.H.C. FROM M1411 TO LOT 24 + CONC ENCASEMENT BETWEEN M1103 & M1408
2-27-81	REVISED WATER LINE UNDER 60" PIPE
2-11-81	REVISED S.H.C. TO LOT 27
DATE	REVISION

DEPARTMENT OF PUBLIC WORKS  
HOWARD COUNTY, MARYLAND

James M. [Signature] 4/10/80  
DIRECTOR OF PUBLIC WORKS DATE

William S. [Signature] 4/10/80  
CHIEF BUREAU OF ENGINEERING DATE

James J. [Signature] 4/10/80  
CHIEF BUREAU OF UTILITIES DATE

William H. [Signature] 4/10/80  
CHIEF LAND DEVELOPMENT DIVISION DATE

BOENDER ASSOCIATES, INC.  
ENGINEERS, PLANNERS, SURVEYORS,  
BALTIMORE, MD 465-7777  
SALISBURY, MD 749-1288

CONTRACT NO. 24-0924-D

WATER AND SEWER PROFILES  
HAMMOND VILLAGE - SECTION 8

HAMMOND VILLAGE SEC 8  
ELECTION DISTRICT NO. 6

DRAWING NO.  
2 OF 2

SCALE  
AS  
SHOWN

DES: WJH  
DRW: NJ  
CHK: R.L.M.