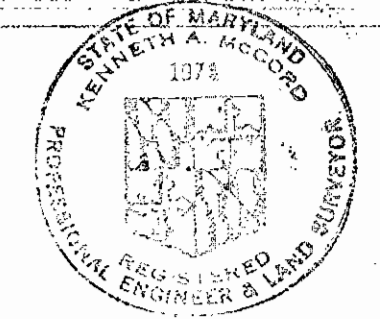


Waste: Water Disposal Potapco  
 Type of Buildings: Mobile Homes  
 No. of SHC: None  
 No. of WMC: None  
 WATER & SEWER CODE  
 County Use:  
 Sewer No. 2520000  
 Water No. DO6

**LOCATION MAP**  
 Scale: 1" = 600'

**GENERAL NOTES**

1. Approximate location of existing mains are shown. The Contractor shall take all necessary precautions to protect existing mains and services and maintain uninterrupted supply. Any damage incurred shall be repaired immediately.
2. All pipe elevations shown are invert elevations.
3. The Contractor shall locate existing utilities a minimum of two weeks in advance of construction operations in vicinity of utilities.
4. All horizontal and vertical controls are based on Maryland State Datum.
5. For all standard details see standards bound in Specifications.
6. Clear all utilities by a minimum of 6"; clear all poles by 2'-0" minimum or tunnel as required.
7. All sewer mains shall be C.S.P.X., V.C.P.X. or A.C.P. Class 2400 unless otherwise noted.
8. All manholes shall be 4'-0" inside diameter.
9. The Contractor shall provide a joint in all sewer mains within 2'-0" of exterior manhole walls.
10. Manholes designated W.T. in Plan and Profile shall have water-tight frame and cover.
11. The Contractor shall notify MISS UTILITY: 1-559-0100 at least 48 hours before starting work shown on these plans.



Revisions:  
 Change proposed MH to Existing MH.

ITEM	BID	AS-BUILT	MATERIAL/SUPPLIER
8" Sewer	1450 LF	1066 LF	8" DTP CERTAIN LIT400 8" DTP GREEN 920
Manholes	42 VF	36.4 VF	Atlantic

Deep Run Park  
 Outfall No. 1  
 Contract No. 10-0919-D

**BENCH MARKS**

W.R.#A. B.M.#C-G Elev. 209.54  
 R.R. Spike in 8" Cherry, 130' ± NE of  
 R.I.# W-185, 25' ± W of E. Deep Creek.

M.A.P.S. B.M.#A-113 Elev. 290.19  
 60 Penny Spike Base C&E Pole No.  
 245473 E. side of State Route 108,  
 300' ± S of S. Lark Brown Road.

Encase in concrete  
 Sta. 0+22 to 0+42.

Rip-Rap See  
 Detail - Dwg. No. 2

Sediment Control Measures for this  
 Contract will be implemented in  
 accordance with Section 14  
 of the Specifications.

REVIEWED FOR HOWARD SOIL CONSERVATION  
 DISTRICT AND MEETS TECHNICAL REQUIREMENT

*James M. Helms* 6/26/80  
 SIGNATURE DATE

US SOIL CONSERVATION SERVICE

This Development Plan is approved for Soil Erosion and  
 Sediment Control by the Howard County Conservation District

APPROVED:

*William T. Rowe* 6-25-80  
 HOWARD S.C.D. DATE

DEPARTMENT OF PUBLIC WORKS  
 HOWARD COUNTY, MARYLAND

*John F. Nunn* 7-10-80  
 DIRECTOR OF PUBLIC WORKS - DATE

*William E. Rowe* 7-10-80  
 CHIEF - BUREAU OF ENGINEERING - DATE

*James M. Helms* 7-1-80  
 CHIEF - BUREAU OF UTILITIES - DATE

**WHITMAN REQUARDT & ASSOCIATES**  
 ENGINEERS  
 1304 ST. PAUL ST  
 BALTIMORE, MARYLAND

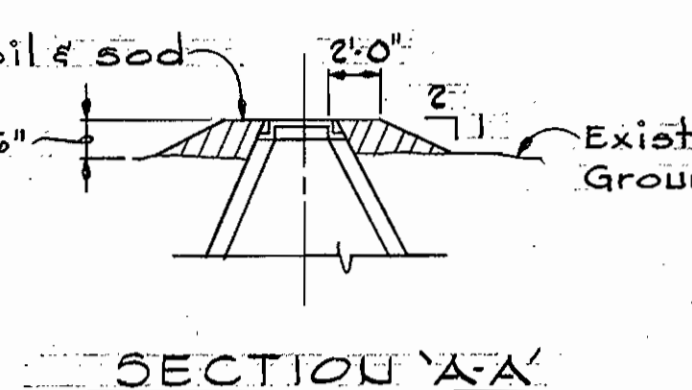
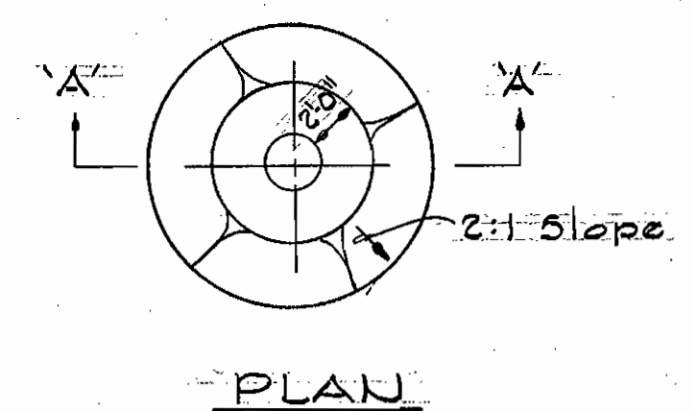
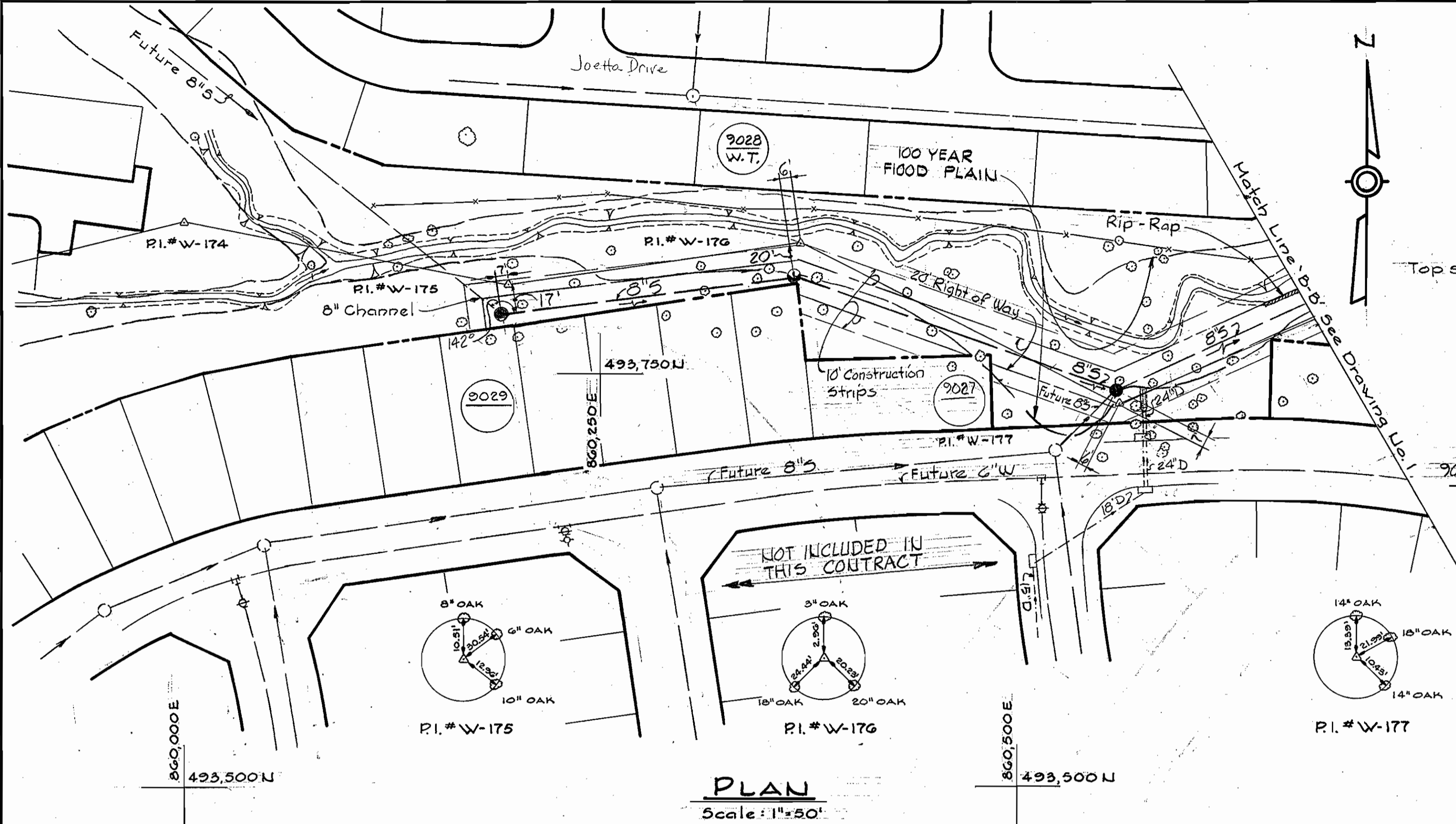
CONTRACT NO. 10-0919-D

PLAN OF  
 SEWER MAINS

ELECTION DISTRICT  
 ELKRIDGE NO. 1

DRAWING  
 NO. 1  
 OF 2  
 SCALE  
 AS  
 SHOWN

1/5 - 619 SW

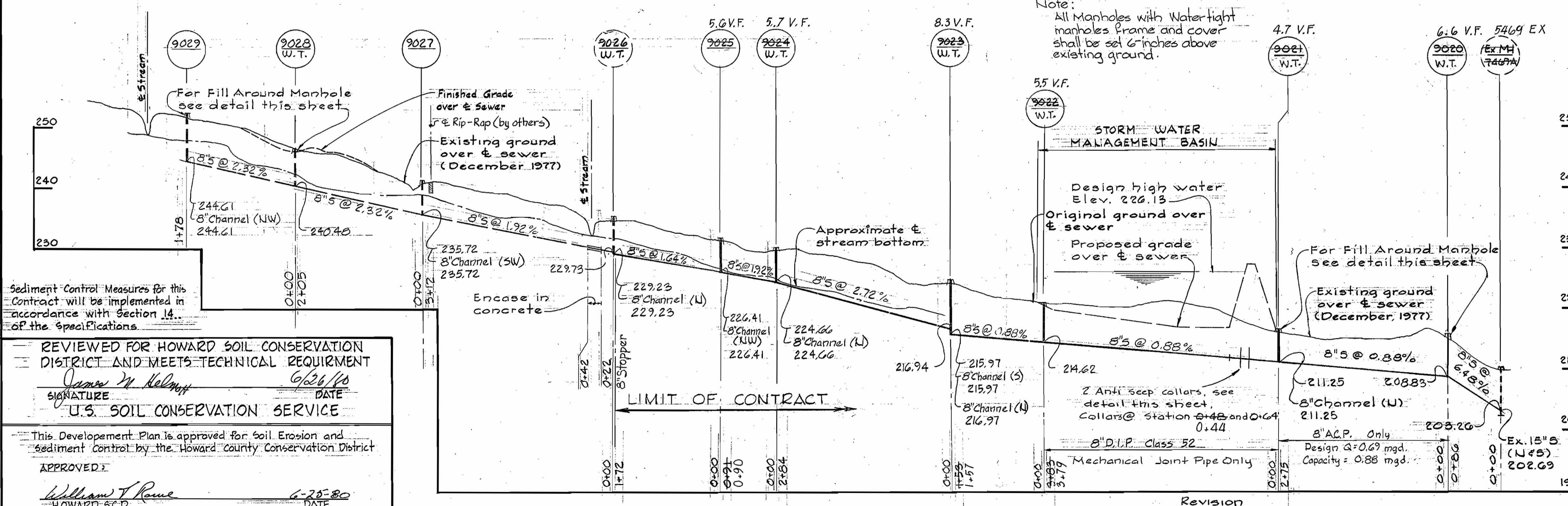
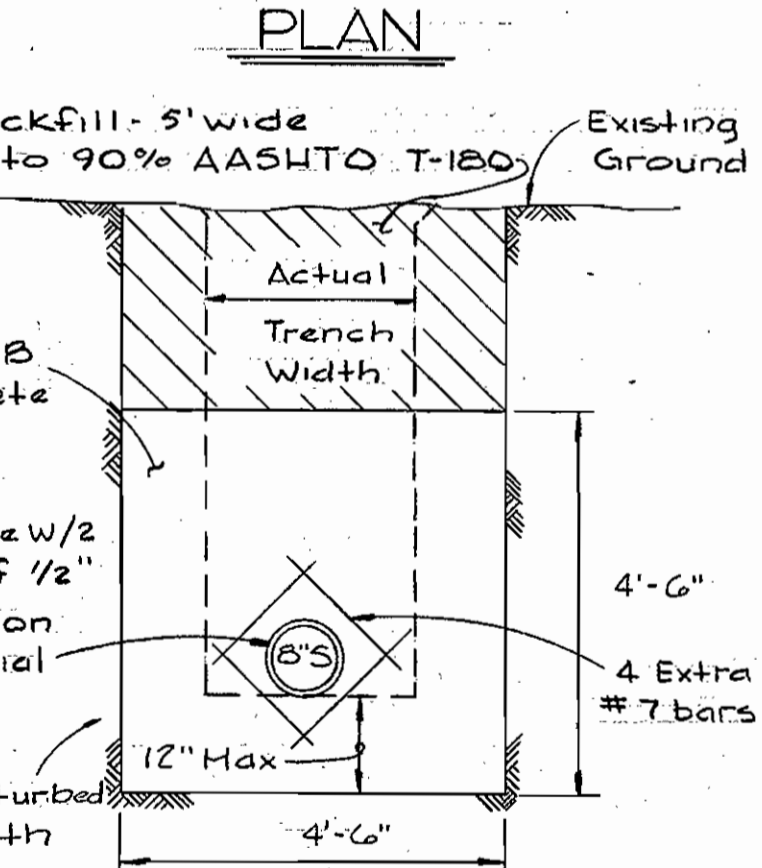
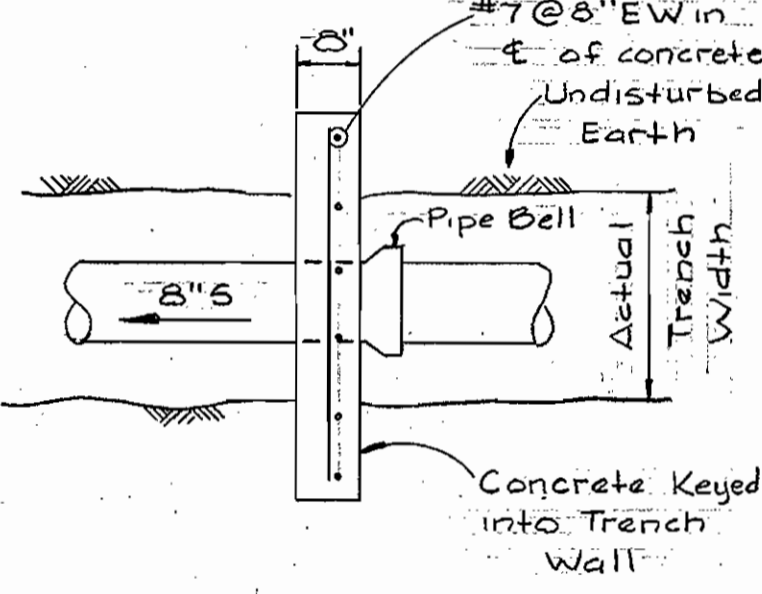


FILL AROUND MANHOLES  
9020, 9021, 9022, 9023, 9024, 9025, AND 9026  
Scale: 1/8"=1'-0"

Rip-Rap shall consist of dense rocks of random shapes and sizes resistant to the action of air and water and suitable for bank protection. All rocks shall weigh a minimum of 150 pounds.

Maintain 1'-0" Minimum clearance between Rip-Rap and top of pipe

- Notes:
- Erosion Control Fabric shall be Poly Filter-X as manufactured by Carthage Mills, Inc., Erosion Control Division, 124 West 60th Street, Cincinnati, Ohio; Laurel Erosion Control Cloth as manufactured by Laurel Plastic Inc., Madison, Maine or approved equal.
  - Rip-Rap shall be placed 6' minimum each side of sewer or as shown.



REVIEWED FOR HOWARD SOIL CONSERVATION DISTRICT AND MEETS TECHNICAL REQUIREMENT  
 Signature: James M. Helms  
 DATE: 6/26/80  
 U.S. SOIL CONSERVATION SERVICE

This Development Plan is approved for Soil Erosion and Sediment Control by the Howard County Conservation District  
 APPROVED: William J. Reine  
 HOWARD S.C.D. DATE: 6-28-80

DEPARTMENT OF PUBLIC WORKS  
 HOWARD COUNTY, MARYLAND  
 Director of Public Works: James F. Nemmy  
 Chief-Bureau of Engineering: William S. Kelly  
 Chief-Bureau of Utilities: James A. Glick  
 Chief-Land Development Division: Joseph Sealant

WHITMAN REQUARDT & ASSOCIATES  
 ENGINEERS  
 1304 ST. PAUL ST.  
 BALTIMORE, MARYLAND

CONTRACT NO. 10-0919-D

PLAN, PROFILES & DETAILS OF SEWER MAINS

ELECTION DISTRICT ELKRIDGE NO. 1

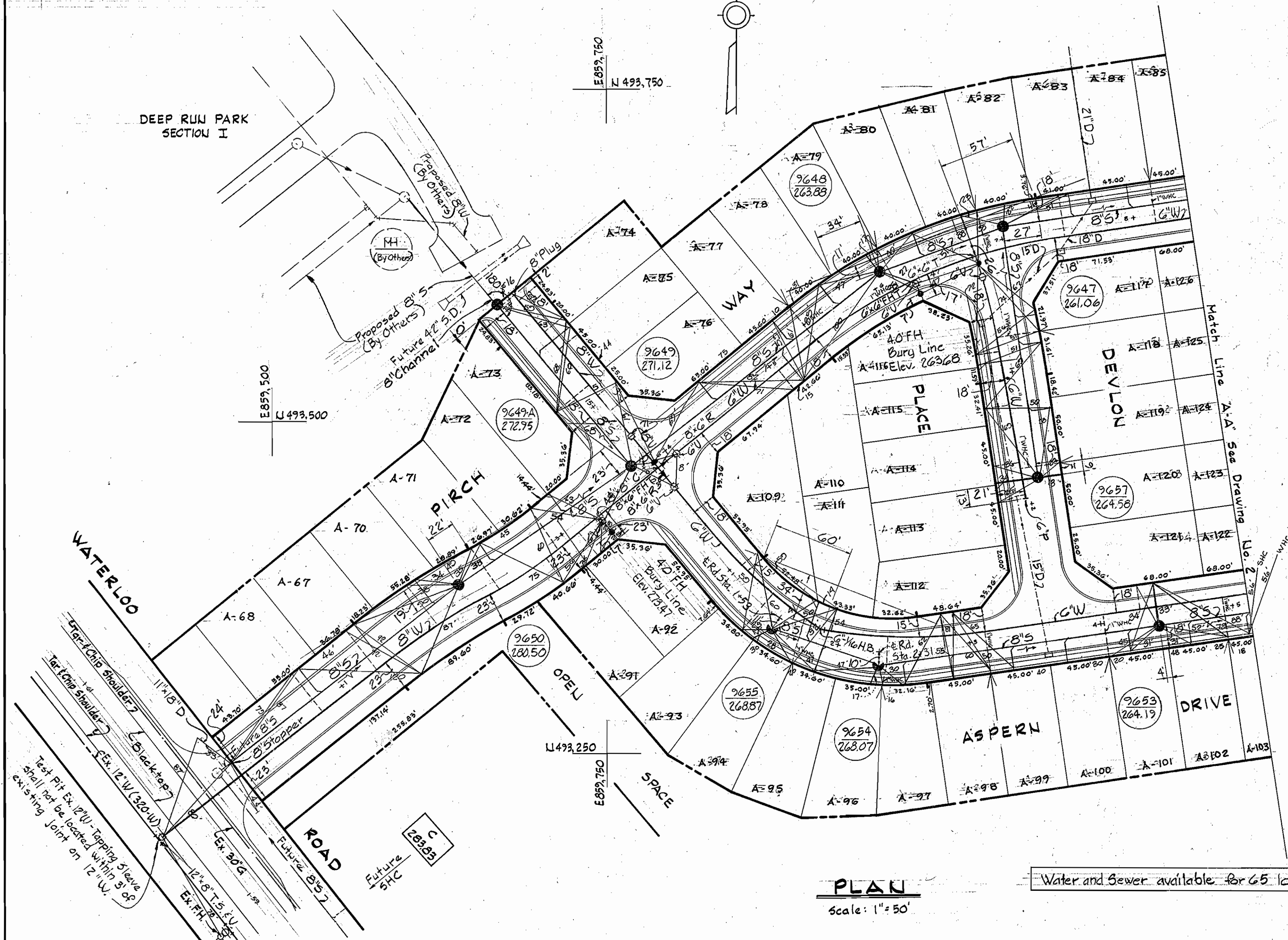
DRAWING NO. 2 OF 2  
 SCALE AS SHOWN

WS 919 - S/2

**BENCH MARKS**

W.R. (A. B.M. #C-6) Elev. 209.54  
 R.R. Spike in B' Cherry, 32' N. of  
 MH#7469 to MH#7470, 150' East  
 MAPS B.M. #A-113 Elev. 290.19  
 60 Penny Spike Base of Pole No.  
 245473 E. side of State Rt. 108,  
 300' S. of S. Lark Brown Road.

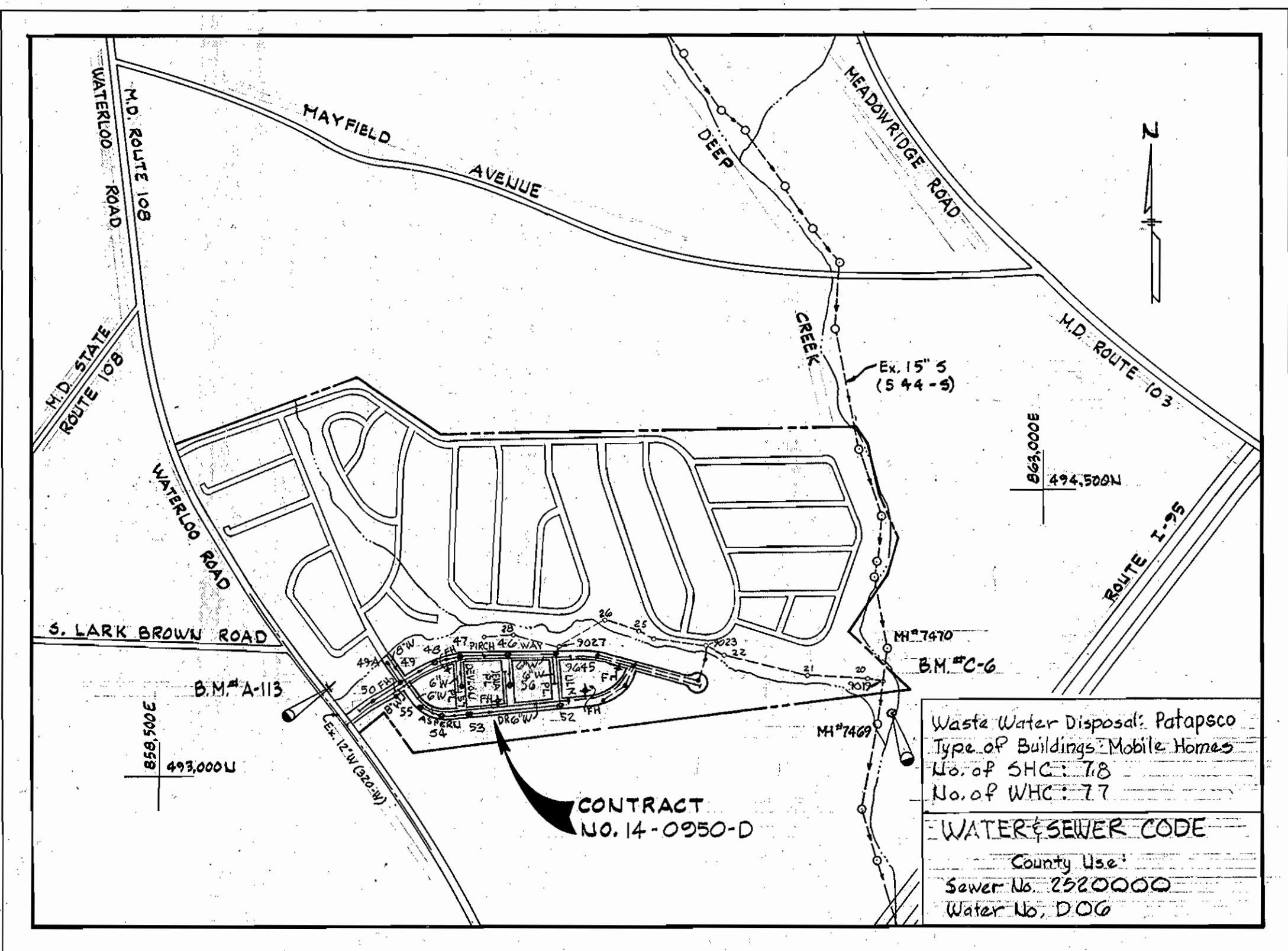
DEEP RUN PARK  
SECTION I



**PLAN**

Scale: 1" = 50'

Water and Sewer available for 65 lots



**VICINITY MAP**

Scale: 1" = 600'

Waste Water Disposal: Patapsco  
 Type of Buildings: Mobile Homes  
 No. of SHC: 78  
 No. of WHC: 77  
 WATER & SEWER CODE  
 County Use:  
 Sewer No. 2920000  
 Water No. D06

**GENERAL NOTES**

- APPROXIMATE LOCATION OF EXISTING MAINS ARE SHOWN. THE CONTRACTOR SHALL TAKE ALL NECESSARY PRECAUTIONS TO PROTECT EXISTING MAINS AND SERVICES AND MAINTAIN UNINTERRUPTED SUPPLY. ANY DAMAGE INCURRED SHALL BE REPAIRED IMMEDIATELY.
- ALL PIPE ELEVATIONS SHOWN ARE INVERT ELEVATIONS.
- THE CONTRACTOR SHALL LOCATE EXISTING UTILITIES A MINIMUM OF TWO WEEKS IN ADVANCE OF CONSTRUCTION OPERATIONS IN VICINITY OF UTILITIES.
- THE CONTRACTOR SHALL NOTIFY THE FOLLOWING UTILITIES OR AGENCIES AT LEAST FIVE DAYS BEFORE STARTING WORK SHOWN ON THESE PLANS:  
 BALTIMORE GAS AND ELECTRIC COMPANY - UNDERGROUND ELECTRIC DISTRIBUTION ENGINEERING DAMAGE CONTROL 234-5691  
 UNDERGROUND GAS DISTRIBUTION ENGINEERING 234-5621  
 CHESAPEAKE AND POTOMAC TELEPHONE COMPANY 393-3648.  
 MISS UTILITY - 1 - 559-0100
- FOR ALL STANDARD DETAILS SEE STANDARDS BOUND IN SPECIFICATIONS.
- ALL HORIZONTAL AND VERTICAL CONTROLS ARE BASED ON MARYLAND STATE DATUM.
- CLEAR ALL UTILITIES BY A MINIMUM OF 6".
- BLOCK ALL FITTINGS WITH CONCRETE, SEE STANDARDS BOUND IN SPECIFICATIONS.
- ALL WATER MAINS SHALL HAVE A MINIMUM OF 3 1/2' COVER.
- ALL WATER MAINS SHALL BE C.I.P. OR D.I.P. UNLESS OTHERWISE NOTED.
- ALL VALVES SHALL BE STRAPPED TO TEES WHERE APPLICABLE IN ACCORDANCE WITH THE STANDARD DETAILS.
- ALL FIRE HYDRANTS SHALL BE STRAPPED AND BUTTRESSED IN ACCORDANCE WITH THE STANDARD DETAILS SOIL AROUND THE HYDRANTS SHALL BE COMPACTED IN ACCORDANCE WITH SECTION 5-15 OF THE STANDARD SPECIFICATIONS.
- PAYMENTS FOR STRAPPING FIRE HYDRANTS AND VALVES WILL BE INCLUDED IN UNIT PRICE BID FOR FURNISHING AND LAYING WATER MAINS.
- BURY LINE ELEVATIONS ON FIRE HYDRANTS SHALL BE SET TO THE ELEVATIONS SHOWN ON THE DRAWINGS.
- ALL W.H.C.'S. SHALL BE 3/4" DIAMETER UNLESS OTHERWISE NOTED.
- WATER SERVICES SHALL BE FOR INSIDE METER SETTINGS.
- ALL SEWER MAINS SHALL BE C.S.P.X., V.C.P.X. OR A.C.P. CLASS 2400 UNLESS OTHERWISE NOTED.
- ALL MANHOLES SHALL BE 4'-0" INSIDE DIAMETER.
- THE CONTRACTOR SHALL PROVIDE A JOINT IN ALL SEWER MAINS WITHIN 2'-0" OF EXTERIOR MANHOLE WALLS.

REVIEWED FOR HOWARD SOIL CONSERVATION DISTRICT AND MEETS TECHNICAL REQUIREMENT  
 Signature: *James M. Kellogg* DATE: 12/11/80  
 U.S. SOIL CONSERVATION SERVICE

Sediment Control Measures for this Contract will be implemented in accordance with Road Construction Plans F-81-03

This Development Plan is approved for Soil Erosion and Sediment Control by the Howard County Conservation District  
 APPROVED: *William T. Rowe* DATE: 12-11-80  
 HOWARD S.C.D.

BY	NO.	REVISION	DATE
WRM	42	Revision of lot numbers	12-11

DEPARTMENT OF PUBLIC WORKS  
 HOWARD COUNTY, MARYLAND  
 Director: *James F. Nunnally* DATE: 12-17-80  
 Chief-Bureau of Engineering  
 Chief: *James L. Collins* DATE: 12/16/80  
 Chief-Bureau of Utilities  
 Chief-Land Development Division

WHITMAN REQUARDT AND ASSOCIATES  
 ENGINEERS  
 1304 ST. PAUL ST.  
 BALTIMORE, MARYLAND

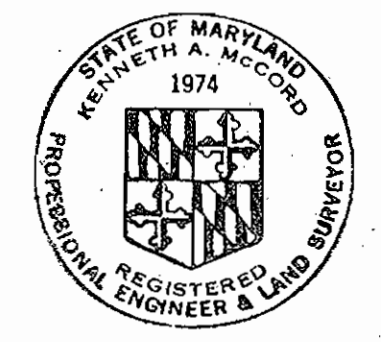
ITEM	BID	AS BUILT	MATERIAL/SUPPLIER
8" Sewer	2,720 LF	2,727	CERTAINTEED AC Pipe
Manholes	90 V.F.	94 S.	ATLANTIC PRE-CAST
8" Water	640 LF	638	GRIFFEN DIP
6" Water	2,370 LF	2375	GRIFFEN DIP
6" SEWER		1345	CERTAINTEED AC Pipe
8" Valves	2	2	AMERICAN VALVE & F.H.
6" V (Excluding F.H.)	8	8	AMERICAN VALVE & F.H.
Fire Hydrants	3	3	AMERICAN DAKLING

CONTRACT NO. 14-0950-D

PLAN OF WATER & SEWER DRAINS

ELECTION DISTRICT ELKRIDGE NO. 1

DRAWING NO. 1 OF 3 SCALE AS SHOWN



*Kenneth A. McLeod*  
 Village of Deep Run  
 Section I, Part I  
 Contract No. 14-0950-D

1/5M-056 SM