

Type of Buildings	DUPLEX * SINGLE FAM. DETACHED.
Number of Lots	58 70*
Number of Water House Connections	57 70*
Number of Sewer House Connections	58 70*
Drainage Area	LITTLE PATUXENT

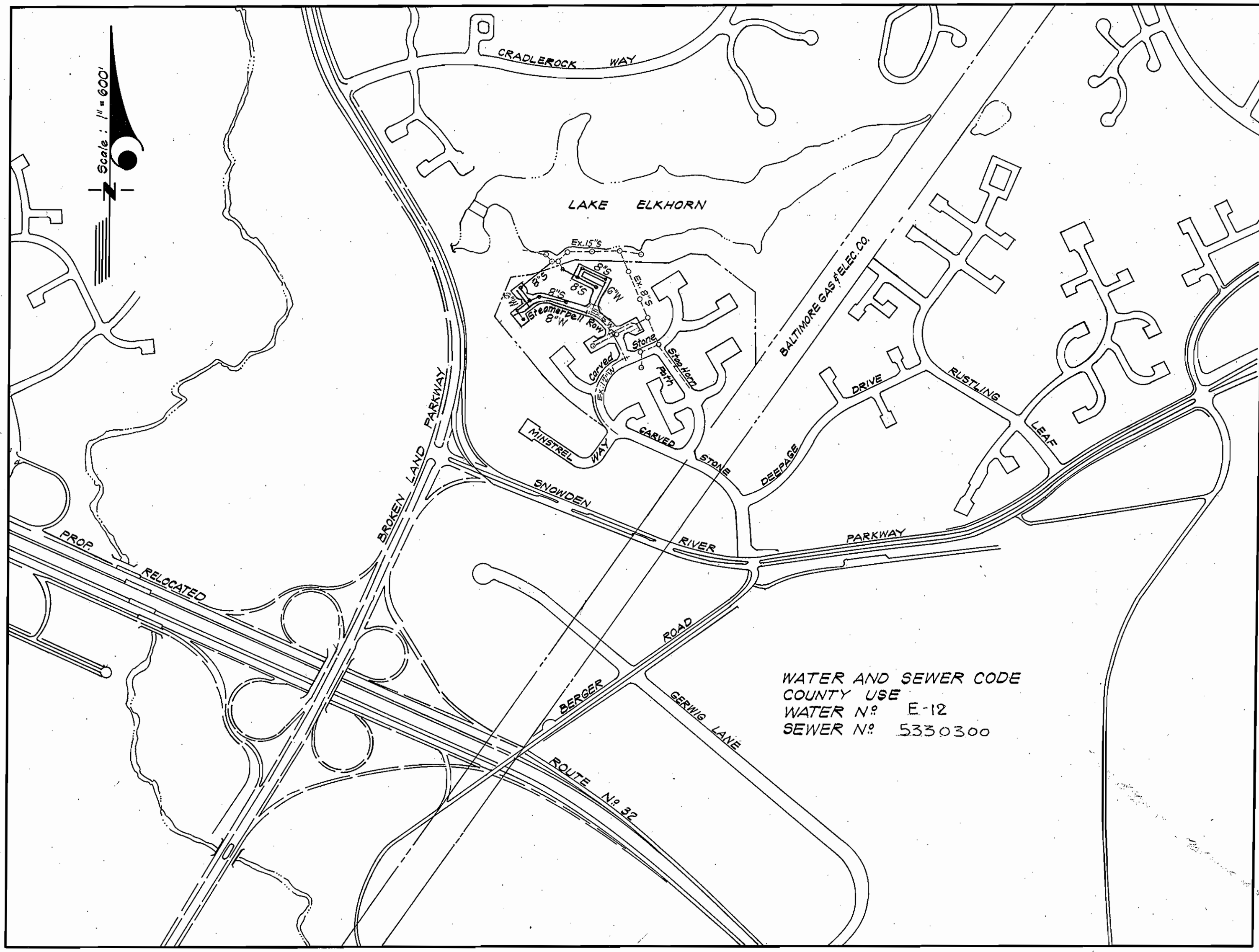
* SEE REV. NO. 4 - 9/22/82

NOTE: REBATES FOR LOTS A-361 to A-375 (15 LOTS) UNDER CONTRACT 2846-D-W&S.

GENERAL NOTES

- All water mains to be C.I.P., D.I.P. unless otherwise shown.
- Top of all water mains to have a minimum of 3.5 ft. cover unless otherwise noted.
- All valves shall be strapped to face in accordance with standard details.
- Block all fittings with concrete, see standards bound in specifications.
- Bury line elevations on fire hydrants shall be set to the elevations shown on the drawings. All fire hydrants shall be strapped and buttressed with concrete in accordance with standard details soil around the fire hydrants to be compacted in accordance with Section 5-15 of the Standard Specifications.
- All sewer mains shall be C.B.P.K., V.C.P.K., or A.C.P. Class 2400 unless otherwise noted.
- The contractor shall provide a joint in all sewer mains within 2'-0" of exterior manhole wall.
- All manholes shall be 4'-0" inside diameter, unless otherwise noted.
- Approximate locations of existing mains are shown. The contractor shall take all necessary precautions to protect existing mains and services and maintain uninterrupted supply. Any damage incurred shall be reported immediately.
- All horizontal controls are based on Maryland State Coordinates.
- All vertical controls are based on U.S.G.S. Datum.
- All pipe elevations shown are invert elevations.
- Clear all utilities by a minimum of 6', clear all poles by 2'-0" minimum or tunnel as required.
- For all standard details see standards bound in specifications.
- Contractor shall locate existing utilities in advance of construction operations in the vicinity of proposed utilities.
- Contractor shall notify the following utilities or agencies at least five (5) days before starting work shown on these plans.
 State Highway Administration - 531-5533
 Baltimore Gas and Electric Company - Customer Service 685-0123
 Bureau of Utilities, Howard County 292-2366

 Chesapeake and Potomac Telephone Co. - 725-9976
 American Telephone and Telegraph Cable Location Division - 301-303-3553
 Colonial Pipeline Company - 781-4641
- Trees are to be protected from damage to maximum extent. Trees located within the construction strip are not to be removed or damaged by the contractor.
- Contractor shall remove trees, stumps and rocks along line of excavation as directed by the Engineer.
- Place regulation "Men Working" and warning signs as required to comply with Maryland State Highway Administration Manual of Traffic Control for Highway Construction and Maintenance Operations.
- The Contractor shall not operate any Water Main Valves on the existing system.



WATER AND SEWER CODE
 COUNTY USE
 WATER N° E-12
 SEWER N° 5330300

Sediment Control Measures for this Contract will be implemented in accordance with Section 14 of the Specifications.

REVIEWED FOR HOWARD SOIL CONSERVATION DISTRICT AND MEETS TECHNICAL REQUIREMENT.

James Nelson 8-4-80
 SIGNATURE DATE

U.S. SOIL CONSERVATION SERVICE

This Development Plan is approved for Soil Erosion and Sediment Control by the Howard Soil Conservation District.

APPROVED:

William J. Rouse 8-4-80
 HOWARD S.C.D. DATE

DEPARTMENT OF PUBLIC WORKS
 HOWARD COUNTY, MARYLAND

William J. Rouse 8-14-80
 CHIEF BUREAU OF ENGINEERING DATE
James A. Ellis 8/16/80
 CHIEF BUREAU OF UTILITIES DATE
William J. Rouse 8-6-80
 CHIEF LAND DEVELOPMENT DATE

CONTRACT NO. 24-0914 D W&S
 VILLAGE OF OWEN BROWN
 HOWARD COUNTY, MARYLAND
 DEPARTMENT OF PUBLIC WORKS

ITEM	QUANTITIES		MATERIAL / SUPPLIER
	ESTMD	AS-BUILT	
8" Sewer	1472'	80.5	8" D.I.P. 52 ATLANTIC STATES FLOW
		14232	8" PVC TYPE 1500R 35 JMPTCC 13364R ASTM D 3034 / FLOW
8" Water	643'	643	ATLANTIC STATES 52 D.I.P. FLOW
6" Water	789'	820	ATLANTIC STATES 52 D.I.P. FLOW
8" Valve (Excluding F.H. Valves)	1 EA.	2	MH / FLOW
Fire Hydrants	2 EA.	2	MH / FLOW

St. Nelson Bank
 2-26-80

Revision No.	Date	Description
A	9-22-82	ADD SHT. #A - REVISED HOUSE CONNS.
1	2-26-81	Revised Water & Sewer House Conn. at Wedding Ring Way
2	3-17-81	Revised Const. of MH #2 to a Pre-Cast MH & Block C.I.P. 8" Stubs. Revised Profile Steamers Bell Row at Candle shine Cou-1, Station 1+15
3	4-28-81	

COLUMBIA
 RESUBDIVISION OF PARCEL A-232, V.O. B SECTION 2 AREA 1 LOTS A-237 THRU A-354

Contract No. 24-0914 - D W&S

CLARK • FINEFROCK & SACKETT
 ENGINEERS • PLANNERS • SURVEYORS
 11315 LOCKWOOD DRIVE • SILVER SPRING, MARYLAND • (301) 593-3400

DEPARTMENT OF PUBLIC WORKS
 HOWARD COUNTY, MARYLAND
John F. Nemej 8-15-80
 DIRECTOR OF PUBLIC WORKS DATE

CONTRACT NO. 24-0914 D

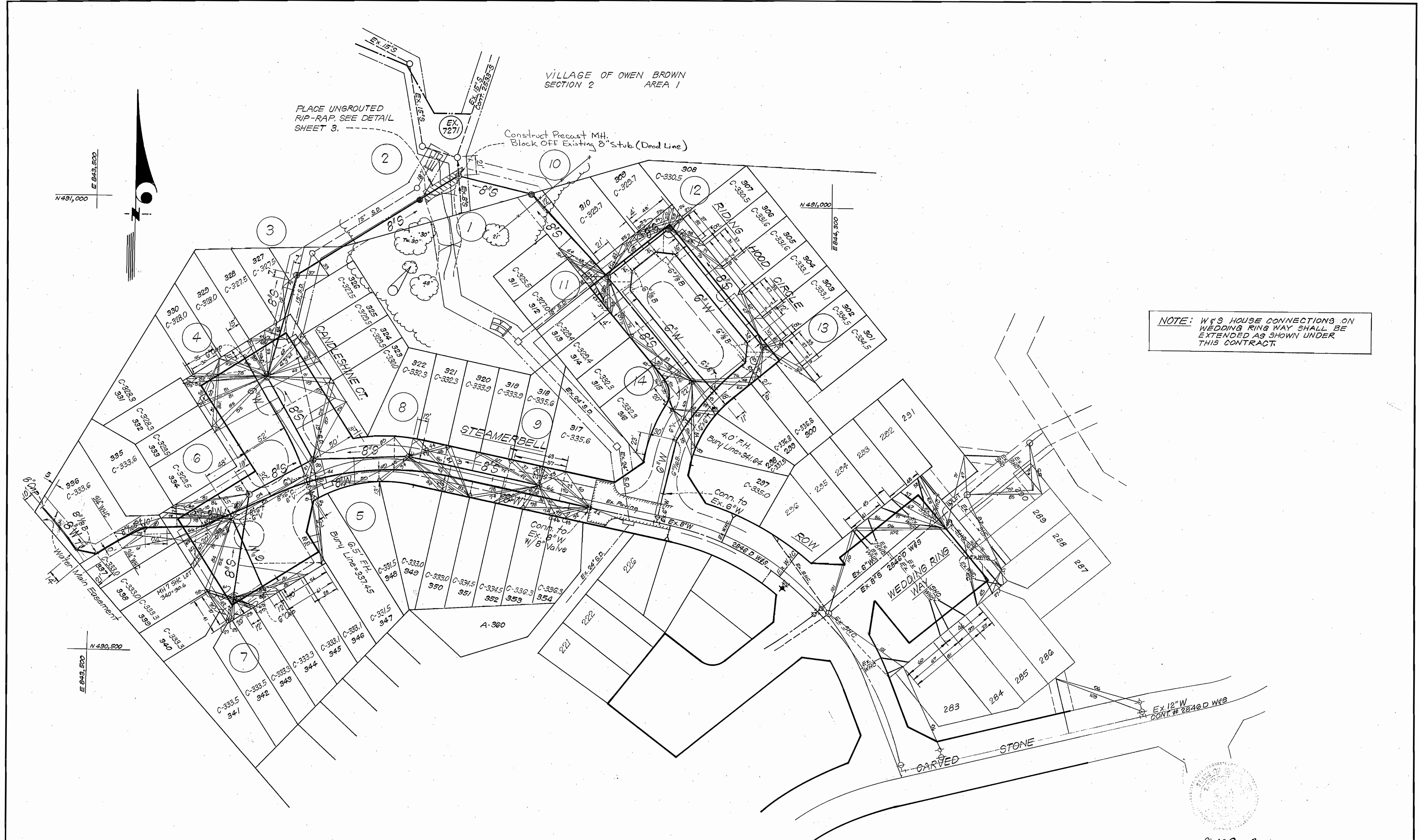
PLAN OF
 WATER & SEWER MAINS

COLUMBIA
 VILLAGE OF OWEN BROWN
 ELECTION DISTRICT - GUILFORD No. 6

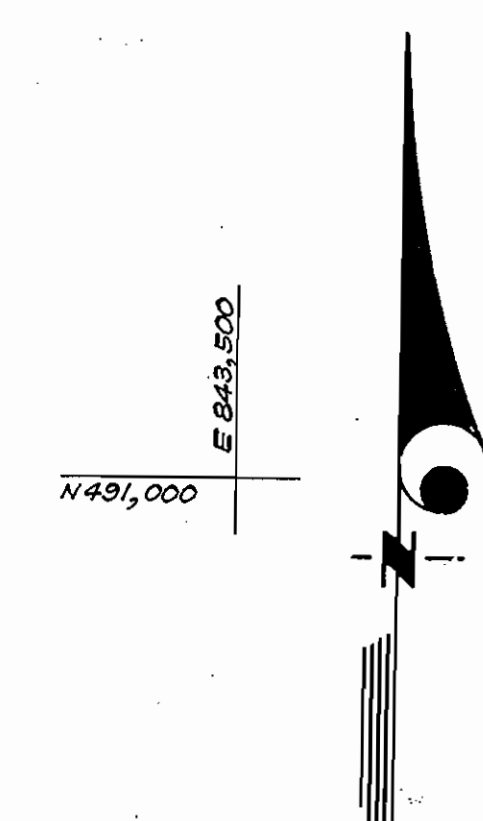
DRAWING NO. 1 OF 4 SCALE 1" = 50'

WS 914 - WS/1

WS 914 -WS/2



NOTE: W'S HOUSE CONNECTIONS ON WEDDING RING WAY SHALL BE EXTENDED AS SHOWN UNDER THIS CONTRACT.



SPECIAL NOTE:
FOR WATER & SEWER HOUSE CONNECTIONS AND REVISED LOT LINES SEE SHEET 4 OF 4.

Revision No.	Date	REV. W & S House Conn. See SHT A Description
4	3-22-82	REV. W & S House Conn. See SHT A Description
1	2-26-81	Revised W & S House Conn. at Wedding Ring Way
2	3-17-81	Revised Constr. of MH # 2 to Precast MH's Block Ex. 8" stub.

L. Nelson Cent
2-26-80

DEPARTMENT OF PUBLIC WORKS
HOWARD COUNTY, MARYLAND

Charles S. Ellis 8-14-80
CHIEF BUREAU OF ENGINEERING DATE

James A. Ellis 8-15-80
CHIEF BUREAU OF UTILITIES DATE

W. J. ... 8-15-80
CHIEF LAND DEVELOPMENT DIVISION DATE

CLARK • FINEFROCK & SACKETT
ENGINEERS • PLANNERS • SURVEYORS
11315 LOCKWOOD DRIVE • SILVER SPRING, MARYLAND • (301) 593-3400

DEPARTMENT OF PUBLIC WORKS
HOWARD COUNTY, MARYLAND

William F. ... 8-15-80
DIRECTOR OF PUBLIC WORKS DATE

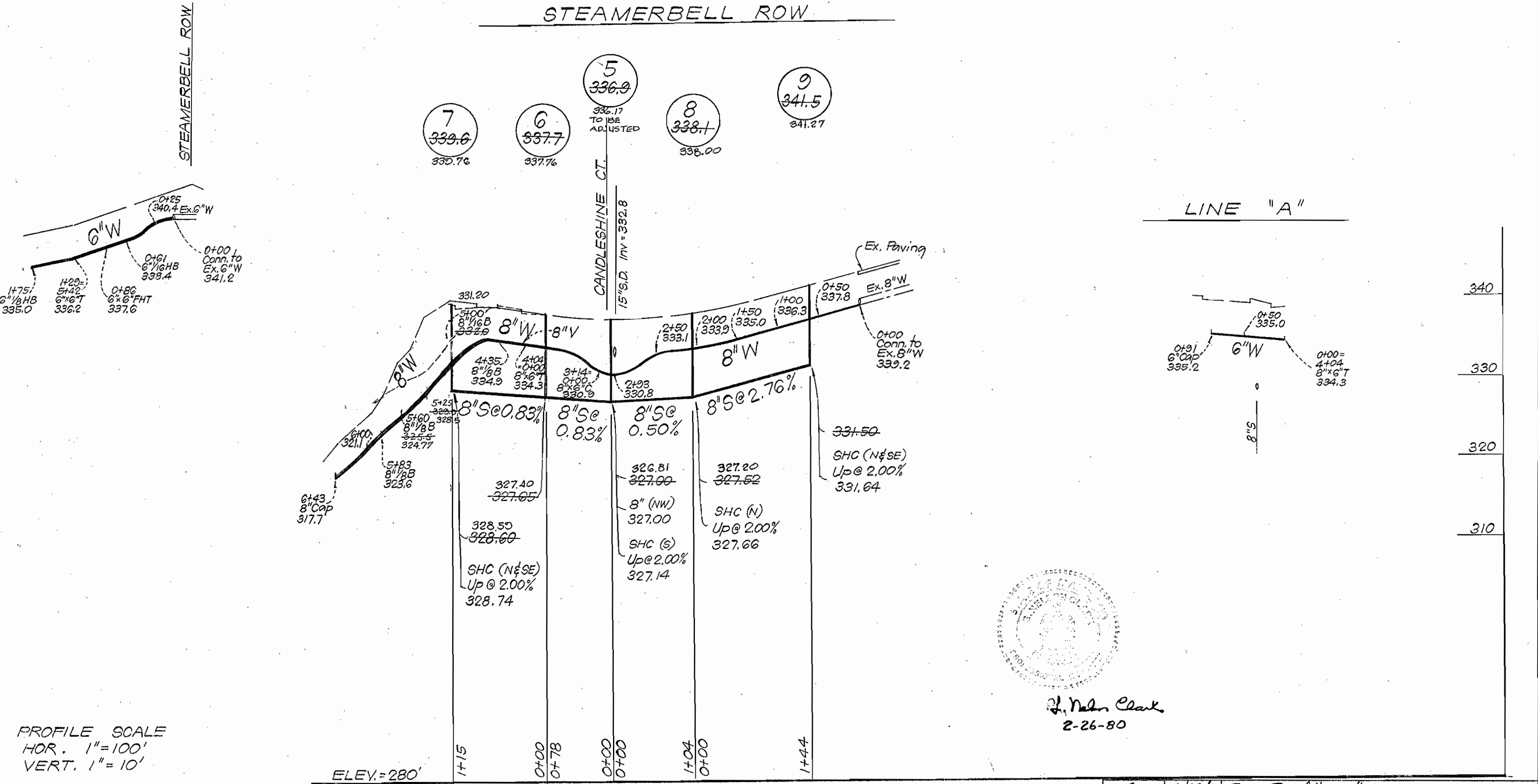
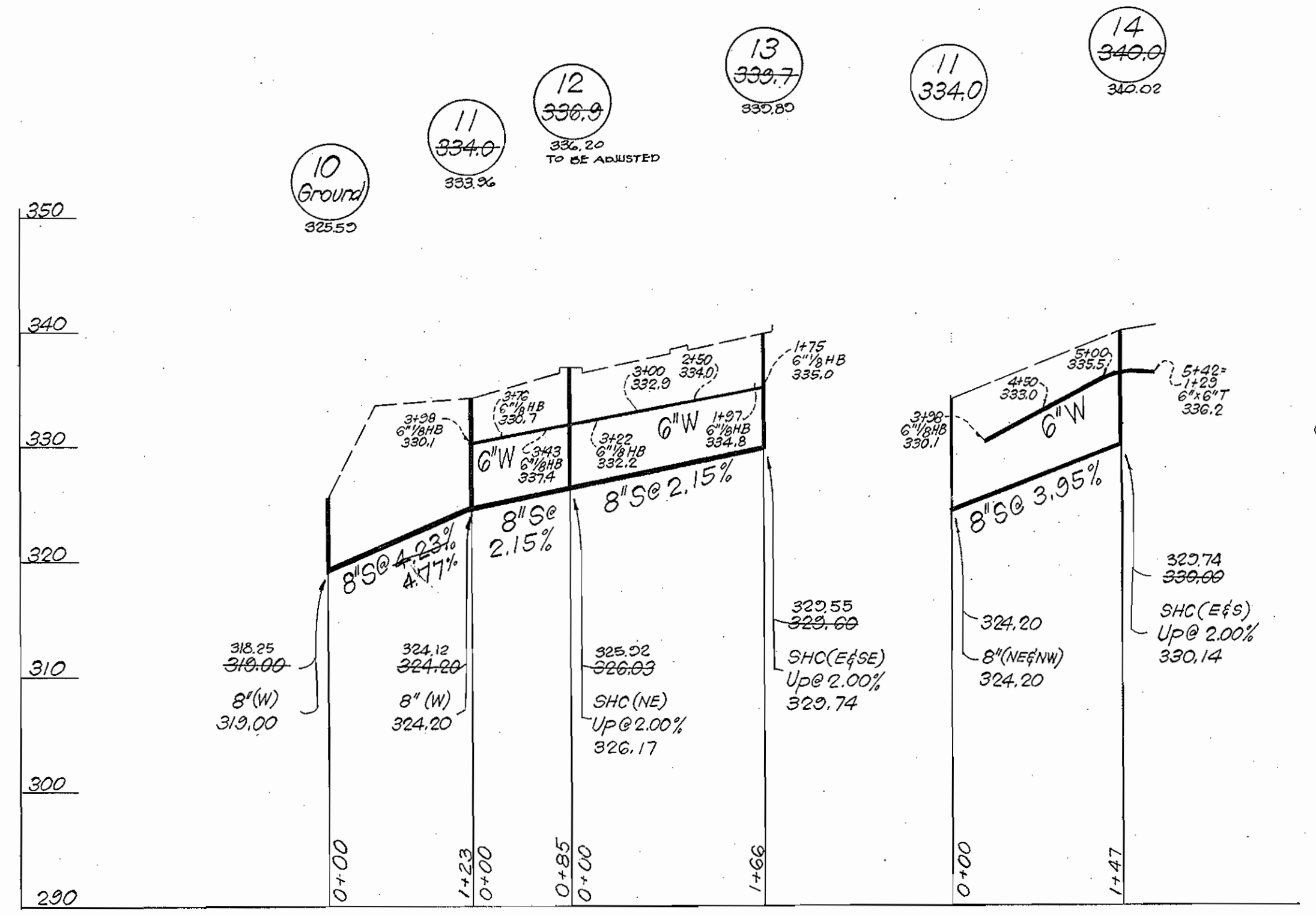
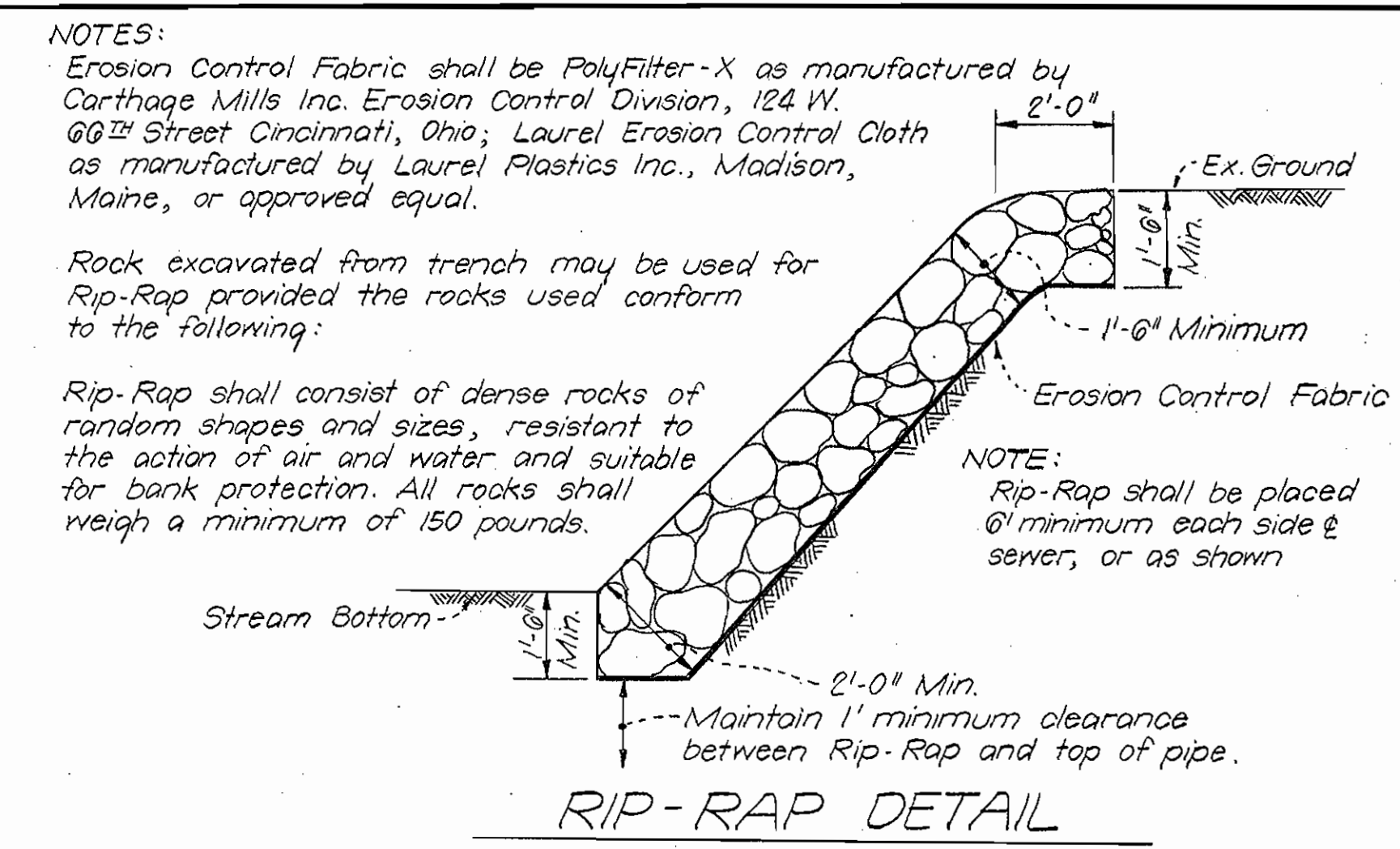
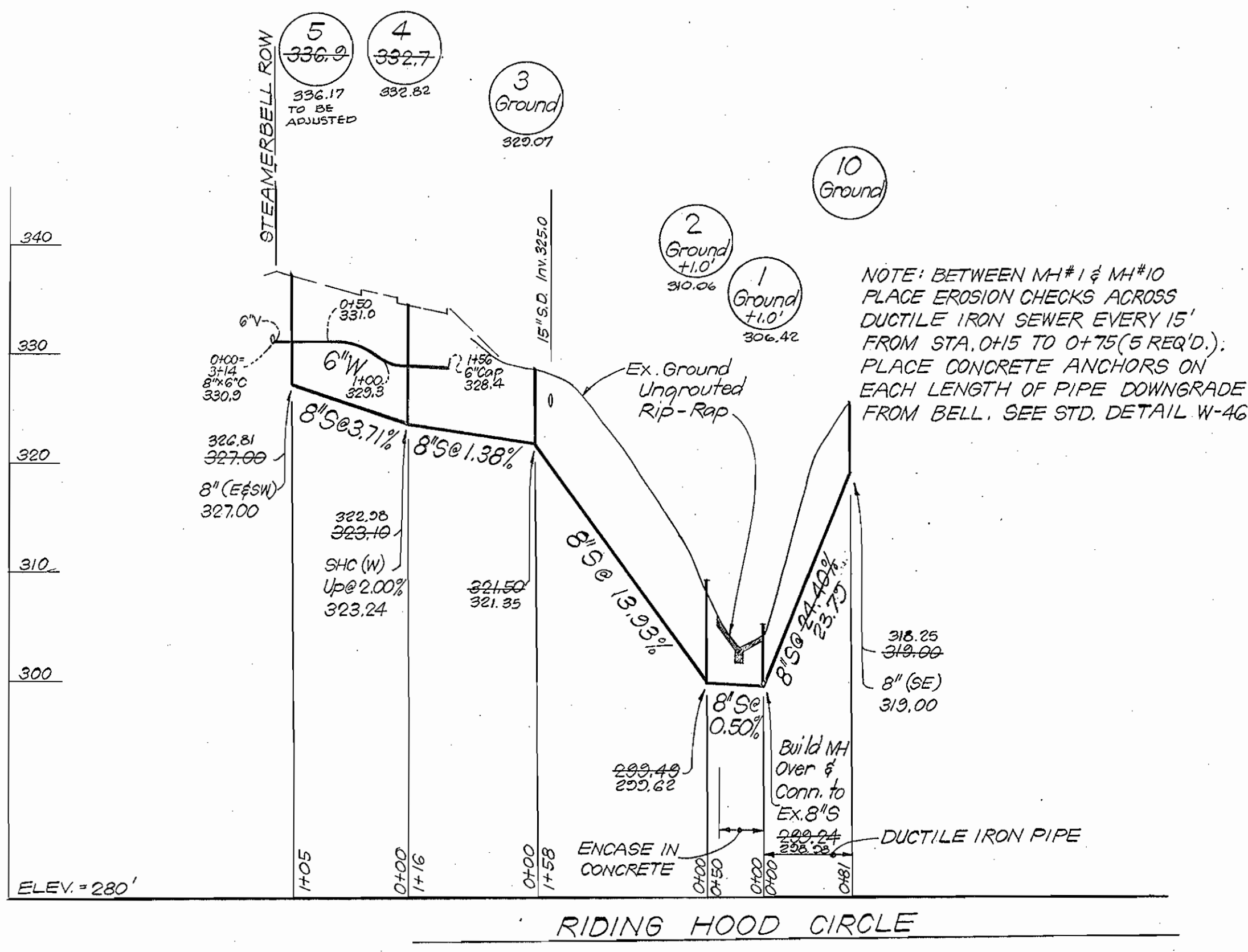
CONTRACT NO. 24-0314 D

PLAN OF
WATER & SEWER MAINS

COLUMBIA
VILLAGE OF OWEN BROWN
ELECTION DISTRICT - GUILFORD No. 6

DRAWING NO. 2 OF 4 SCALE 1" = 50'

WS 914 - WS/3



DEPARTMENT OF PUBLIC WORKS
HOWARD COUNTY, MARYLAND
James A. Gligo, Chief Bureau of Utilities
Date: 8/1/80

DEPARTMENT OF PUBLIC WORKS
HOWARD COUNTY, MARYLAND
J. F. Nimmy, Director of Public Works
Date: 8-15-80

CONTRACT NO. 24-0914 D

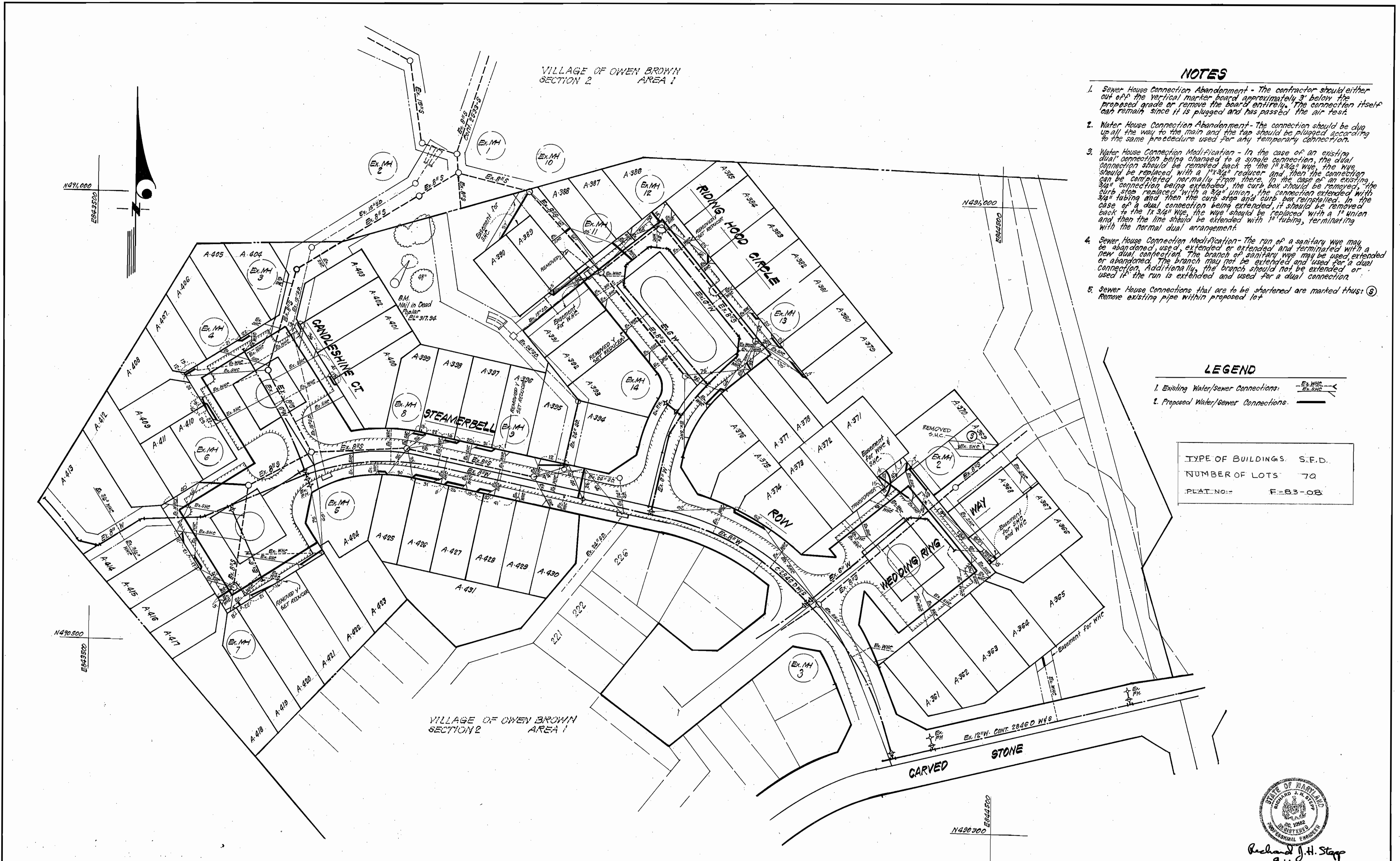
PROFILES OF
WATER & SEWER MAINS

COLUMBIA
VILLAGE OF OWEN BROWN
ELECTION DISTRICT - GUILFORD No. 6

DRAWING NO. 3 OF 4 SCALE AS SHOWN

3	4/28/81	Rev. Profile B'W near MH 7.
1	2/26/81	Add B'V, Revised WHC & SHC
Rev. No.	Rev. Date	

WS 914 - WS14



- NOTES**
1. Sewer House Connection Abandonment - The contractor should either cut off the vertical marker being approximately 3' below the proposed grade or remove the marker entirely. The connection itself can remain since it is plugged and has passed the air test.
 2. Water House Connection Abandonment - The connection should be dug up all the way to the main and the tap should be plugged according to the same procedure used for any temporary connection.
 3. Water House Connection Modification - In the case of an existing dual connection being changed to a single connection, the dual connection should be removed back to the 1" x 3/4" wye, the wye should be replaced with a 1 1/4" reducer and then the connection can be completed normally from there. In the case of an existing 3/4" connection being extended, the curb box should be removed, the curb stop replaced with a 3/4" union, the connection extended with 3/4" tubing and then the curb stop and curb box reinstalled. In the case of a dual connection being extended, it should be removed back to the 1 x 3/4" wye, the wye should be replaced with a 1" union and then the line should be extended with 1" tubing, terminating with the normal dual arrangement.
 4. Sewer House Connection Modification - The run of a sanitary wye may be abandoned, used, extended or terminated with a new dual connection. The branch of sanitary wye may be extended or abandoned. The branch may not be extended and used for a dual connection. Additionally, the branch should not be extended or used if the run is extended and used for a dual connection.
 5. Sewer House Connections that are to be shortened are marked thus: (S) Remove existing pipe within proposed lot.

LEGEND

1. Existing Water/Sewer Connections: Ex. W.C.
 Ex. S.C.

2. Proposed Water/Sewer Connections: W.C.
 S.C.

TYPE OF BUILDINGS: S.F.D.
 NUMBER OF LOTS: 70
 PLAT No.: F-83-08

Richard J. H. Stapp
 9-16-82

 CLARK • FINEFROCK & SACKETT ENGINEERS • PLANNERS • SURVEYORS 11315 LOCKWOOD DRIVE • SILVER SPRING, MARYLAND • (301) 593-3400	DEPARTMENT OF PUBLIC WORKS HOWARD COUNTY, MARYLAND Director of Public Works: <i>Walter F. Neuman</i> DATE: 9-16-82	Chief, Bureau of Engineering: <i>Allen S. Brown</i> DATE: 9-20-82	Chief, Bureau of Utilities: <i>Richard J. H. Stapp</i> DATE: 9-16-82	Chief, Land Development Division: <i>Richard J. H. Stapp</i> DATE: 9-16-82	CONTRACT NO. 24-0914-D	PLAN OF WATER & SEWER HOUSE CONNECTIONS	COLUMBIA VILLAGE OF OWEN BROWN ELECTION DISTRICT - GUILFORD NO. 6	DRAWING NO. 4 OF 4	SCALE 1" = 50'
	VILLAGE OF OWEN BROWN Sec. 2, Area 1 Contract No. 24-0914-D, F-83-08					AS BUILT JULY, 1984			