

SEDIMENT CONTROL NOTE

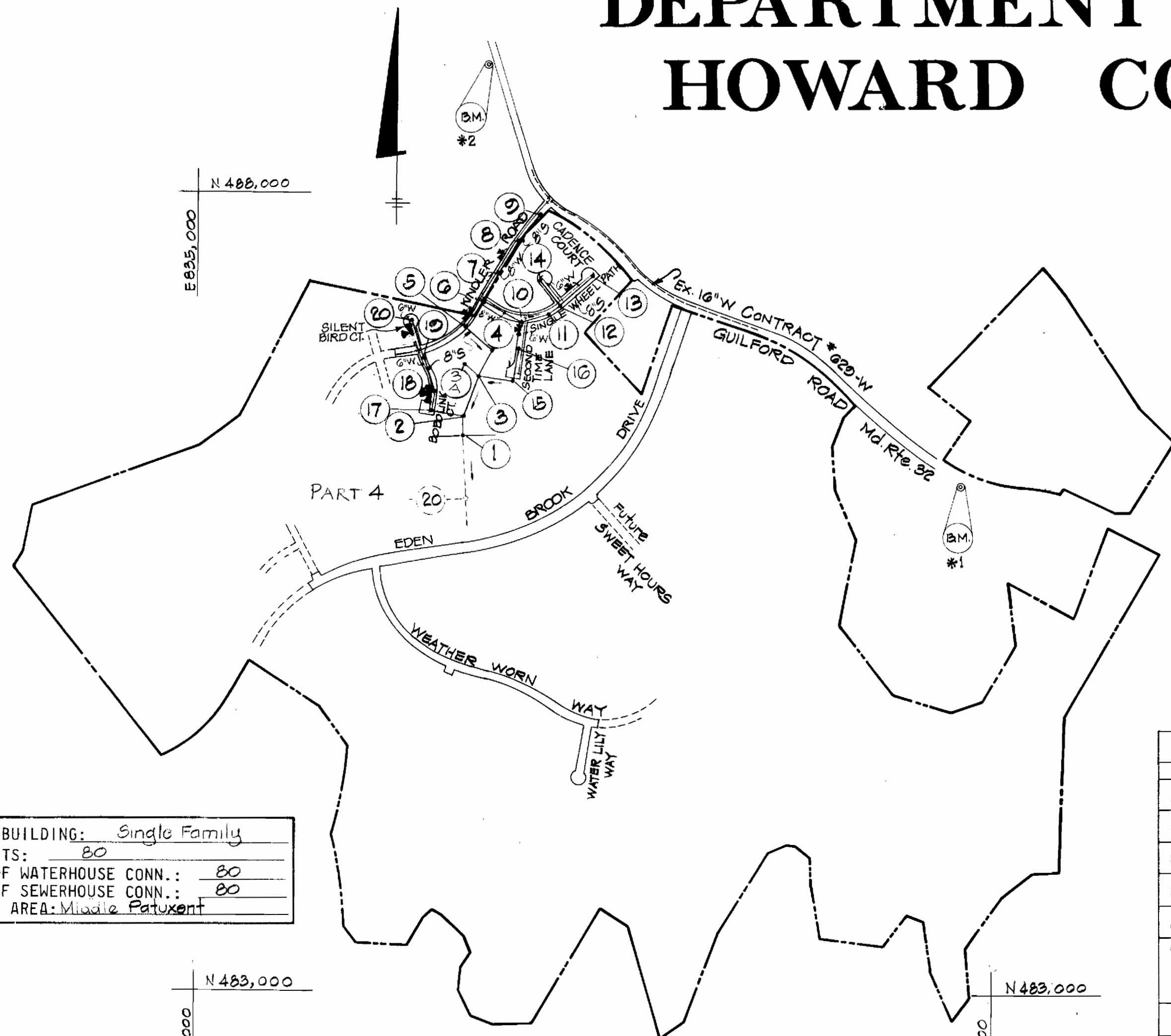
- FOR SEDIMENT CONTROL FOR THIS CONTRACT SEE THE APPROVED ROAD CONSTR. PLANS FOR FILE F-80-96.

VILLAGE OF KINGS CONTRIVANCE

SECTION 2, AREA 3, PHASE II, PART 3

CONTRACT NO. 34-0911-D

DEPARTMENT OF PUBLIC WORKS HOWARD COUNTY, MARYLAND



TYPE OF BUILDING: Single Family
 NO. OF LOTS: 80
 NUMBER OF WATERHOUSE CONN.: 80
 NUMBER OF SEWERHOUSE CONN.: 80
 DRAINAGE AREA: Middle Patuxent

Water & Sewer Code
 Sewer Code G350000
 Water Code E16

- * 1 BENCH MARK
 B.M. #2240001 Elev: 329.697
 Description
 Concrete Monument 1 1/2' S. of
 S. Edge Rd. N 486100.300
 E 800811.206
- * 2 BENCH MARK
 B.M. #2340002-R Elev: 362.611
 Description
 R.B. 1.5' W. of W. Edge Rd.
 7' Below Surface N 486800.177
 E 806802.852

NOTE: PROVIDE DROP HOUSE CONNECTIONS FOR THE FOLLOWING LOTS
 LOTS 70 & 71, 77 & 78, 79 & 80, 84, 101

QUANTITIES				
ITEM	UNIT	ESTIMATED	AS-BUILT	MATERIAL/SUPPLIER
8" SEWER	L.F.	4042	4043	Clay / Logan
MANHOLE	EACH	21	21	
8" WATER	L.F.	1080	1965	Ductile Iron
8" VALVE	EACH	2	2	
6" WATER	L.F.	1452	1504	Ductile Iron
6" VALVE (Excluding F.H. VALVES)	EACH	5	5	
FIRE HYDRANT	EACH	6	6	

NOTES

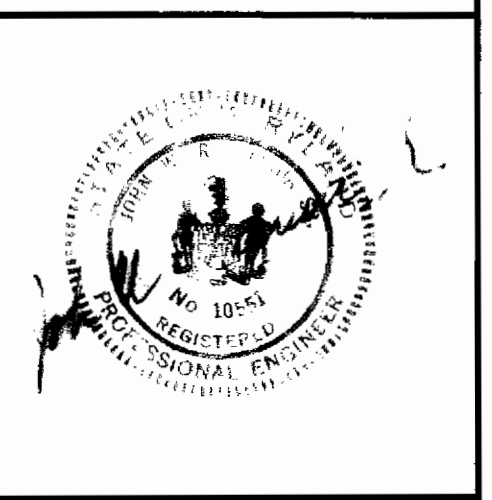
- APPROXIMATE LOCATION OF EXISTING MAINS ARE SHOWN. THE CONTRACTOR SHALL TAKE ALL NECESSARY PRECAUTIONS TO PROTECT EXISTING SERVICES AND MAINTAIN UNINTERRUPTED SUPPLY. ANY DAMAGE INCURRED SHALL BE REPAIRED IMMEDIATELY.
- ALL PIPE ELEVATIONS SHOWN ARE INVERT ELEVATIONS.
- ALL WATER MAINS TO BE C.I.P./D.I.P. UNLESS OTHERWISE NOTED.
- THE CONTRACTOR SHALL LOCATE EXISTING UTILITIES A MINIMUM OF TWO WEEKS IN ADVANCE OF CONSTRUCTION OPERATIONS IN VICINITY OF UTILITIES.
- ALL WATER HOUSE CONNECTIONS SHALL BE FOR INSIDE METER SETTING.
- FOR ALL STANDARD DETAILS, SEE STANDARDS BOUND IN SPECIFICATIONS.
- THE CONTRACTOR SHALL PROVIDE A JOINT IN ALL SEWER MAINS WITHIN 2'-0" OF EXTERIOR MANHOLE WALLS.
- SOIL AROUND FIRE HYDRANTS TO BE COMPACTED IN ACCORDANCE WITH SECTION 5-15 OF THE STANDARDS SPECIFICATIONS.
- ALL HORIZONTAL AND VERTICAL CONTROLS ARE BASED ON MARYLAND STATE DATUM.
- PLACE REGULATION "MEN WORKING" AND WARNING SIGN AS REQUIRED TO COMPLY WITH MARYLAND STATE HIGHWAY ADMINISTRATION MANUAL OF TRAFFIC CONTROL FOR HIGHWAY CONSTRUCTION AND MAINTENANCE OPERATIONS.
- ALL WATER MAINS TO HAVE A MINIMUM OF 3 1/2" COVER UNLESS OTHERWISE NOTED.
- TREES ARE TO BE PROTECTED FROM DAMAGE TO MAXIMUM EXTENT. TREES LOCATED WITHIN THE CONSTRUCTION STRIP ARE NOT TO BE REMOVED OR DAMAGED BY THE CONTRACTOR.
- CLEAR ALL UTILITIES BY A MINIMUM OF 12-INCHES.
- ALL FIRE HYDRANTS SHALL BE STRAPPED TO TEES AND SHALL BE BUTTRESSED WITH CONCRETE IN ACCORDANCE WITH STANDARD DETAILS.
- CONTRACTOR SHALL REMOVE TREES, STUMPS, AND ROOTS ALONG LINE OF EXCAVATION AS DIRECTED BY THE ENGINEER.
- ALL SEWERS SHALL BE V.C.P.X., C.S.P.X., OR A.C.P., CLASS 2400 UNLESS OTHERWISE NOTED.
- ALL MANHOLES SHALL BE 4'-0" INSIDE DIAMETER UNLESS OTHERWISE NOTED.
- PROFILE STATIONS SHALL BE ADJUSTED AS NECESSARY TO CONFORM TO PLAN DIMENSIONS.
- BLOCK ALL FITTINGS WITH CONCRETE. SEE STANDARDS BOUND IN SPECIFICATIONS.
- BURY LINE ELEVATIONS ON FIRE HYDRANTS SHALL BE SET TO THE ELEVATIONS SHOWN ON DRAWINGS.
- ALL THE TWIN WATER HOUSE CONNECTIONS SHALL BE 1-INCH SIZE, SINGLE WATER HOUSE CONNECTIONS SHALL BE 3/4" COPPER PIPE.
- CONTRACTOR SHOULD NOTIFY THE FOLLOWING UTILITIES OR AGENCIES AT LEAST FIVE (5) DAYS BEFORE STARTING WORK SHOWN ON THESE PLANS:
 CHESAPEAKE AND POTOMAC TELEPHONE CO. 725-9976
 BALTIMORE GAS AND ELECTRIC CO.
 -UNDERGROUND ELECTRIC DISTRIBUTION ENGR. 234-5691
 DAMAGE CONTROL 559-0100
 -UNDERGROUND GAS DISTRIBUTION ENGR. 393-3649
 BELL TELEPHONE SYSTEM 393-3553
 LONG DISTANCE CABLE DIVISION 393-3553
 BUREAU OF UTILITIES 392-2360
- WHERE SEWER DEPTH EXCEEDS 12 FEET, USE CLASS 3300 A.C.P.

SEDIMENT CONTROL MEASURES FOR THIS CONTRACT WILL BE IMPLEMENTED IN ACCORDANCE WITH ROAD CONSTRUCTION PLAN F-80-96

THIS DEVELOPMENT PLAN IS APPROVED FOR SOIL EROSION AND SEDIMENT CONTROL BY THE HOWARD COUNTY CONSERVATION DISTRICT.
 APPROVED: *William T. Lane* 1-30-81
 HOWARD S.C.D. DATE

REVIEWED FOR HOWARD SOIL CONSERVATION DISTRICT AND MEETS TECHNICAL REQUIREMENT
 SIGNATURE: *James M. Helms* 1/30/81
 U.S. SOIL CONSERVATION SERVICE DATE

VILLAGE OF KINGS CONTRIVANCE
 Section 2, Area 3, Phase II, Part 3
 C. 34-0911-D



DEPARTMENT OF PUBLIC WORKS
 HOWARD COUNTY, MARYLAND
 Robert A. Berger 2-9-81
 CHIEF - BUREAU OF UTILITIES, DATE

DEPARTMENT OF PUBLIC WORKS
 HOWARD COUNTY, MARYLAND
 William F. Nalley 2-5-81
 DIRECTOR OF PUBLIC WORKS, DATE

REVISIONS
 4-12-81 QUANTITIES CHANGED

DEPARTMENT OF PUBLIC WORKS
 HOWARD COUNTY, MARYLAND
 William F. Nalley 2-5-81
 DIRECTOR OF PUBLIC WORKS, DATE

CONTRACT NO. 34-0911-D

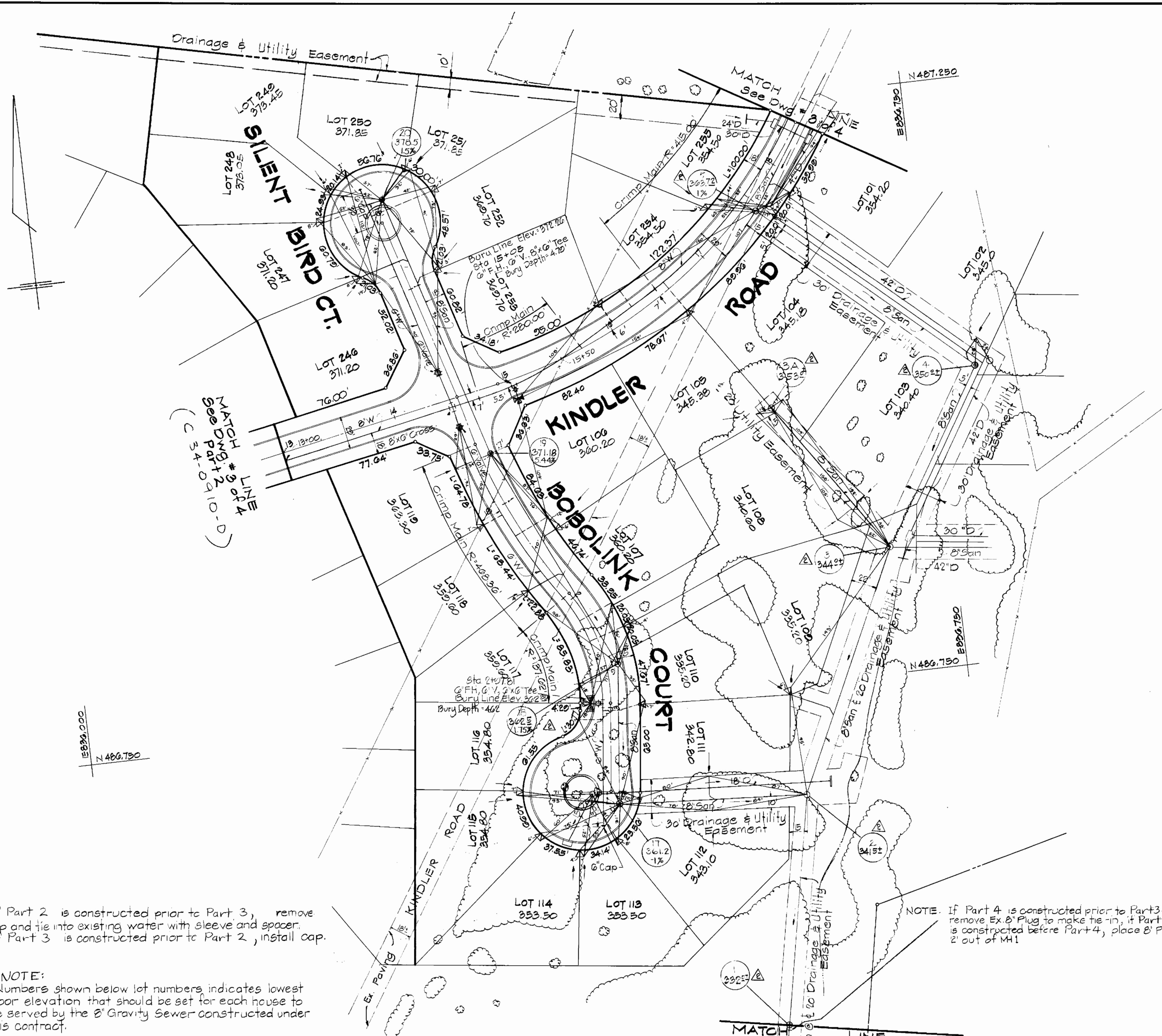
TITLE SHEET

VILLAGE OF KINGS CONTRIVANCE
 SECTION 2 AREA 3 PHASE II PART 3
 6TH ELECTION DISTRICT, HOWARD COUNTY, MARYLAND

DRAWING NO. 1 OF 4

SCALE

As Built 7/17/81



NOTE: If Part 2 is constructed prior to Part 3, remove cap and tie into existing water with sleeve and spacer. If Part 3 is constructed prior to Part 2, install cap.

NOTE: Numbers shown below lot numbers indicates lowest floor elevation that should be set for each house to be served by the 8" Gravity Sewer constructed under this contract.

NOTE: If Part 4 is constructed prior to Part 3, remove Ex. 8" Plug to make tie-in; if Part 3 is constructed before Part 4, place 8" Plug 2' out of MH1.

DEPARTMENT OF PUBLIC WORKS
HOWARD COUNTY, MARYLAND
2-4-81 2-5-81
CHIEF-BUREAU OF UTILITIES DATE CHIEF-LAND DEVELOPMENT DIVISION DATE

CENTURY ENGINEERING, INC.
CONSULTING ENGINEERS-PLANNERS
TOWSON, MARYLAND 21204

DEPARTMENT OF PUBLIC WORKS
HOWARD COUNTY, MARYLAND
2-5-81 2-5-81
DIRECTOR OF PUBLIC WORKS DATE CHIEF-BUREAU OF ENGINEERING DATE

CONTRACT NO. 34-0911-D

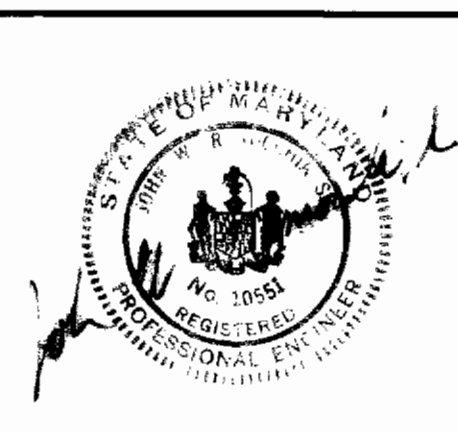
PLAN OF
WATER & SEWER MAINS

VILLAGE OF KING'S CONTRIVANCE
SECTION 2, AREA 3, PHASE II, PART 3
6th Election District, Howard County, Maryland

DRAWING NO. 2 OF 4
SCALE 1"=50'

Rev No	Date	Description
2	7/2/81	MH TOP ELEVATIONS
1	4/16/81	SEWER MH TOP ELEVATION.

VILLAGE OF KING'S CONTRIVANCE
Section 2, Area 3, Phase II, Part 3
C. 34-0911-D

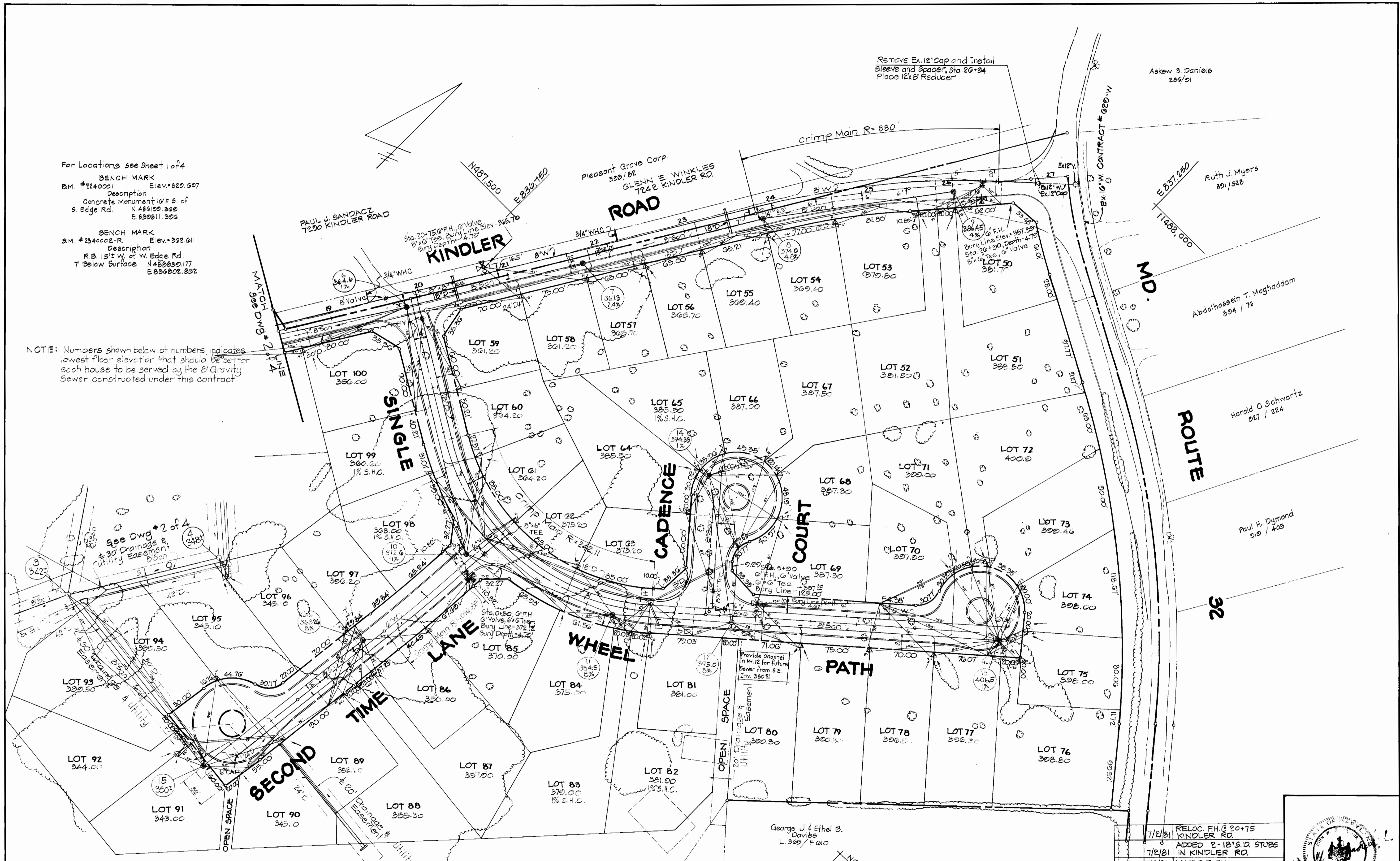


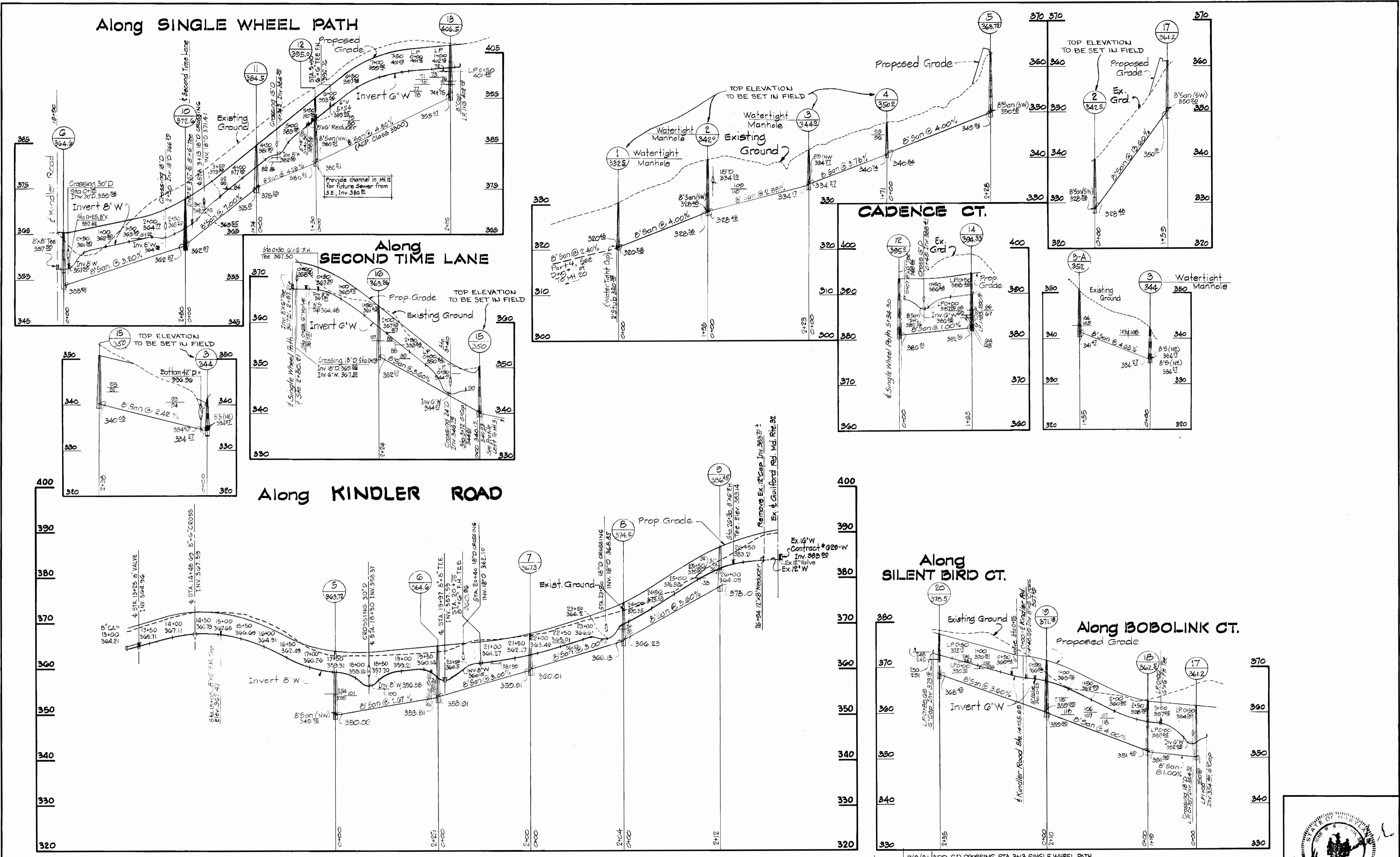
As Built 7/17/81

For Locations see Sheet 1 of 4
 BENCH MARK
 B.M. #2340001 Elev. 322.697
 Description
 Concrete Monument 10" x 8" of
 S. Edge Rd. N 48° 00' 00" E 833011.306

BENCH MARK
 B.M. #2340002-R Elev. 322.611
 Description
 R.B. 1.5" x 1" of W. Edge Rd.
 7' Below Surface N 48° 00' 00" E 833007.852

NOTE: Numbers shown below lot numbers indicates lowest floor elevation that should be set for each house to be served by the 8" Gravity Sewer constructed under this contract





DEPARTMENT OF PUBLIC WORKS
 HOWARD COUNTY, MARYLAND
 R. H. ... 2-5-81
 CHIEF-BUREAU OF UTILITIES DATE CHIEF-LAND DEVELOPMENT DIVISION DATE

DEPARTMENT OF PUBLIC WORKS
 HOWARD COUNTY, MARYLAND
 ... 2-5-81
 DIRECTOR OF PUBLIC WORKS DATE CHIEF-BUREAU OF ENGINEERING DATE

CONTRACT NO. 34-0911-D

PROFILES OF
 WATER & SEWER MAINS

VILLAGE OF KING'S CONTRIVANCE
 SECTION 2, AREA 3, PHASE II, PART 3
 6th Election District, Howard County, Maryland

DRAWING NO. 4
 OF 4
 SCALE
 Horiz: 1"=100'
 Vert: 1"=10'

Rev. No.	Date	Description
7/2/81		ADD S.D. CROSSING STA. 2+13 SINGLE WHEEL PATH
7/2/81		ADD S.D. CROSSINGS STA. 2+40 & 23+50 KINDLER
7/2/81		M4 TOP ELEVATIONS
4/11/81		M4'S 1, 2 & 3. Watertight Manholes
4/11/81		REV. TOP ELEV. ON M4'S

VILLAGE OF KING'S CONTRIVANCE
 Section 2, Area 3, Phase II, Part 3
 C. 34-0911-D

