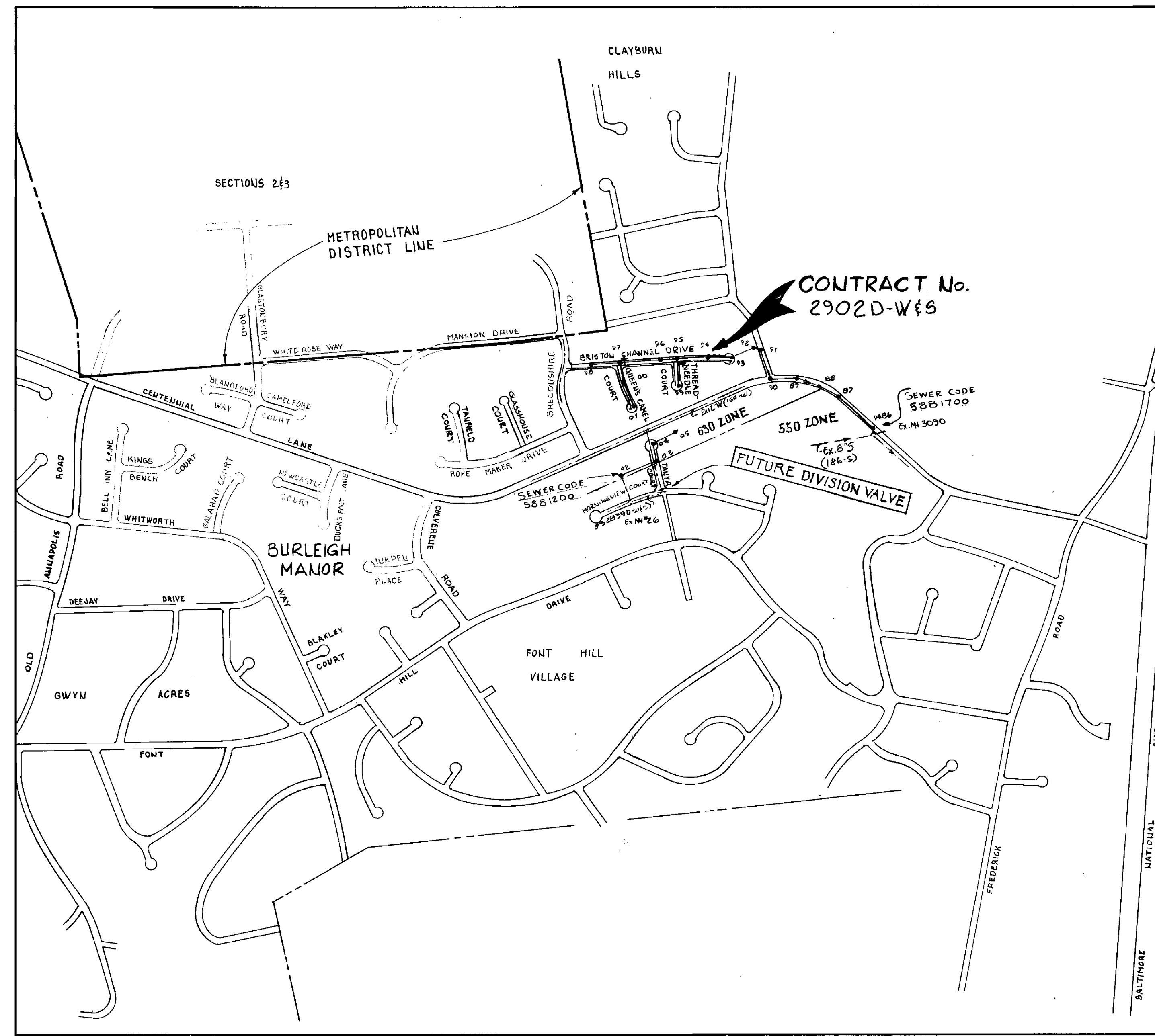


**GENERAL NOTES**

1. APPROXIMATE LOCATION OF EXISTING MAINS ARE SHOWN. THE CONTRACTOR SHALL TAKE ALL NECESSARY PRECAUTIONS TO PROTECT EXISTING MAINS AND SERVICES AND MAINTAIN UNINTERRUPTED SUPPLY. ANY DAMAGE INCURRED SHALL BE REPAIRED IMMEDIATELY.
2. ALL PIPE ELEVATIONS SHOWN ARE INVERT  $\ominus$  ELEVATIONS.
3. THE CONTRACTOR SHALL LOCATE EXISTING UTILITIES A MINIMUM OF TWO WEEKS IN ADVANCE OF CONSTRUCTION OPERATIONS IN VICINITY OF UTILITIES.
4. THE CONTRACTOR SHALL NOTIFY THE FOLLOWING UTILITIES OR AGENCIES AT LEAST FIVE DAYS BEFORE STARTING WORK SHOWN ON THESE PLANS.  
 BALTIMORE GAS AND ELECTRIC COMPANY - UNDERGROUND ELECTRIC DISTRIBUTION ENGINEERING  
 DAMAGE CONTROL 234-5691  
 UNDERGROUND GAS DISTRIBUTION ENGINEERING 234-5621  
  
 CHESAPEAKE AND POTOMAC TELEPHONE COMPANY 393-3648.  
 MISS UTILITY - 1 - 559-0100
5. FOR ALL STANDARD DETAILS, SEE STANDARDS BOUND IN SPECIFICATIONS.
6. ALL HORIZONTAL AND VERTICAL CONTROLS ARE BASED ON MARYLAND STATE DATUM.
7. CLEAR ALL UTILITIES BY A MINIMUM OF 6".
8. BLOCK ALL FITTINGS WITH CONCRETE, SEE STANDARDS BOUND IN SPECIFICATIONS.
9. ALL WATER MAINS SHALL HAVE A MINIMUM OF 3 1/2' COVER.
10. ALL WATER MAINS SHALL BE C.I.P. OR D.I.P. UNLESS OTHERWISE NOTED.
11. ALL VALVES SHALL BE STRAPPED TO TEES WHERE APPLICABLE IN ACCORDANCE WITH THE STANDARD DETAILS.
12. ALL FIRE HYDRANTS SHALL BE STRAPPED AND BUTTRESSED IN ACCORDANCE WITH THE STANDARD DETAILS. SOIL AROUND THE HYDRANTS SHALL BE COMPACTED IN ACCORDANCE WITH SECTION 5-15 OF THE STANDARD SPECIFICATIONS.
13. PAYMENT FOR STRAPPING FIRE HYDRANTS AND VALVES WILL BE INCLUDED IN UNIT PRICE BID FOR FURNISHING AND LAYING WATER MAINS.
14. BURY LINE ELEVATIONS ON FIRE HYDRANTS SHALL BE SET TO THE ELEVATION SHOWN ON THE DRAWINGS.
15. ALL W.H.C.'S SHALL BE 3/4" DIAMETER UNLESS OTHERWISE NOTED.
16. WATER SERVICES SHALL BE FOR INSIDE METER SETTINGS.
17. ALL SEWER MAINS SHALL BE C.S.P.X., V.C.P.X. OR A.C.P. CLASS 2400 UNLESS OTHERWISE NOTED.
18. ALL MANHOLES SHALL BE 4'-0" INSIDE DIAMETER.
19. THE CONTRACTOR SHALL PROVIDE A JOINT IN ALL SEWER MAINS WITHIN 2'-0" OF EXTERIOR MANHOLE WALLS.
20. MANHOLES SHOWN WITH 12" WALLS ARE FOR BRICK MANHOLES ONLY.



**CONTRACT No. 2902D-W&S**

ITEM	AS-BUILT	MATERIAL/SUPPLIER
6" D.I.P. WATER	1,635	ATLANTIC STATE
8" D.I.P. WATER	617	ATLANTIC STATE
6" VALVE	3 EA.	FLOW IND.
F.H. VALVE	2 EA.	FLOW IND.
1" COPPER	188	FLOW IND.
3/4" COPPER	1,427'	FLOW IND.
12" B.T.S. VALVE	1 EA.	FLOW IND.
6" P.V.C. (SAN.)	1,230'	BELAIR RD.
8" P.V.C. (SAN.)	3,057'	BELAIR RD.
8" D.I.P. (SAN.)	98.4'	ATLANTIC STATE
8" TRANSITE (SAN.)	8'	
PRECAST M.H.	17 EA.	ATLANTIC PRECAST

Waste Water Disposal: Savage  
 Type of Buildings: Single Family (52 nos)  
 No. of S.H.C.: 52  
 No. of W.H.C.: 54  
**WATER & SEWER CODE**  
 County Use:  
 Water: 301  
 Sewer: 5881200, 5881700

**CONTRACT NO. 2902D-W&S**  
**BURLEIGH MANOR**  
**HOWARD COUNTY, MARYLAND**  
**DEPARTMENT OF PUBLIC WORKS**

QUANTITIES			
ITEM	BID	AS-BUILT	MATERIAL/SUPPLIER
8" Sewer	3,850 L.F.		
Manholes	210 V.F.		
8" Water	640 L.F.		
8" Valves	1		
6" V (Excluding F.H.V.)	3		
Fire Hydrants	2		

DEPARTMENT OF PUBLIC WORKS  
 HOWARD COUNTY, MARYLAND  
*James L. Ellicott* 1-2-80  
 CHIEF-BUREAU OF UTILITIES - DATE  
*W. O. L. ...*  
 CHIEF-BUREAU OF ENGINEERING - DATE  
**WHITMAN, REQUARDT & ASSOCIATES**  
 ENGINEERS & ARCHITECTS  
 1304 ST. PAUL ST.  
 BALTIMORE, MARYLAND

DEPARTMENT OF PUBLIC WORKS  
 HOWARD COUNTY, MARYLAND  
*Henry F. ...*  
 DIRECTOR OF PUBLIC WORKS  
 DATE 1/2/80

CONTRACT NO. 2902D-W&S

LOCATION MAP OF  
 WATER & SEWER MAINS

BURLEIGH MANOR  
 ELECTION DISTRICT  
 ELLICOTT CITY NO. 2

Burleigh Manor  
 Section 5  
 Contract No. 2902D-W&S  
**DRAWING NO. 1 OF 4**  
**SCALE 1" = 600'**

**BENCH MARKS**

H.Co. B.M.#3140001 Elev. 436.43  
 Concrete Monument 01 above surface  
 41' W of Centennial Lane 115' S of  
 & Burnside Drive.

H. Co. B.M.#3140003 Elev. 423.98  
 Concrete Monument Flush 25' E  
 of Centennial Lane Sta. 31+35 ±.

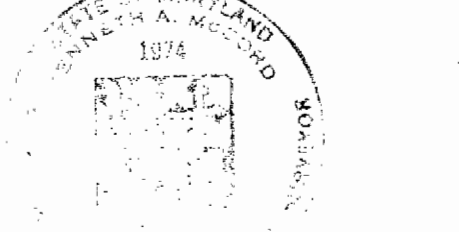
W. R. F.A. B.M.# W-2 Elev. 378.43  
 Galvanized Boat Spike Root 36' Tree.  
 105' S of Int. Font Hill Drive  
 (Rd. Sta. 35+61.2) and Grosvenor Dr.

2837.500  
 N 522.500



FUTURE  
 DIVISION VALVE  
 KEEP CLOSED

POINT HILL VILLAGE  
 Section 2 P.B. 3331



*James L. Glavin*

Burleigh Manor  
 Section 5  
 Contract No. 2902D-Wf5

DEPARTMENT OF PUBLIC WORKS  
 HOWARD COUNTY, MARYLAND

*James L. Glavin* 1-2-80  
 CHIEF-BUREAU OF UTILITIES—DATE

*W. O. Salvo* 1-2-80  
 CHIEF-BUREAU OF ENGINEERING—DATE

WHITMAN, REQUARDT & ASSOCIATES  
 ENGINEERS  
 1304 ST. PAUL ST.  
 BALTIMORE, MARYLAND

DEPARTMENT OF PUBLIC WORKS  
 HOWARD COUNTY, MARYLAND

*James F. Newman*  
 DIRECTOR OF PUBLIC WORKS

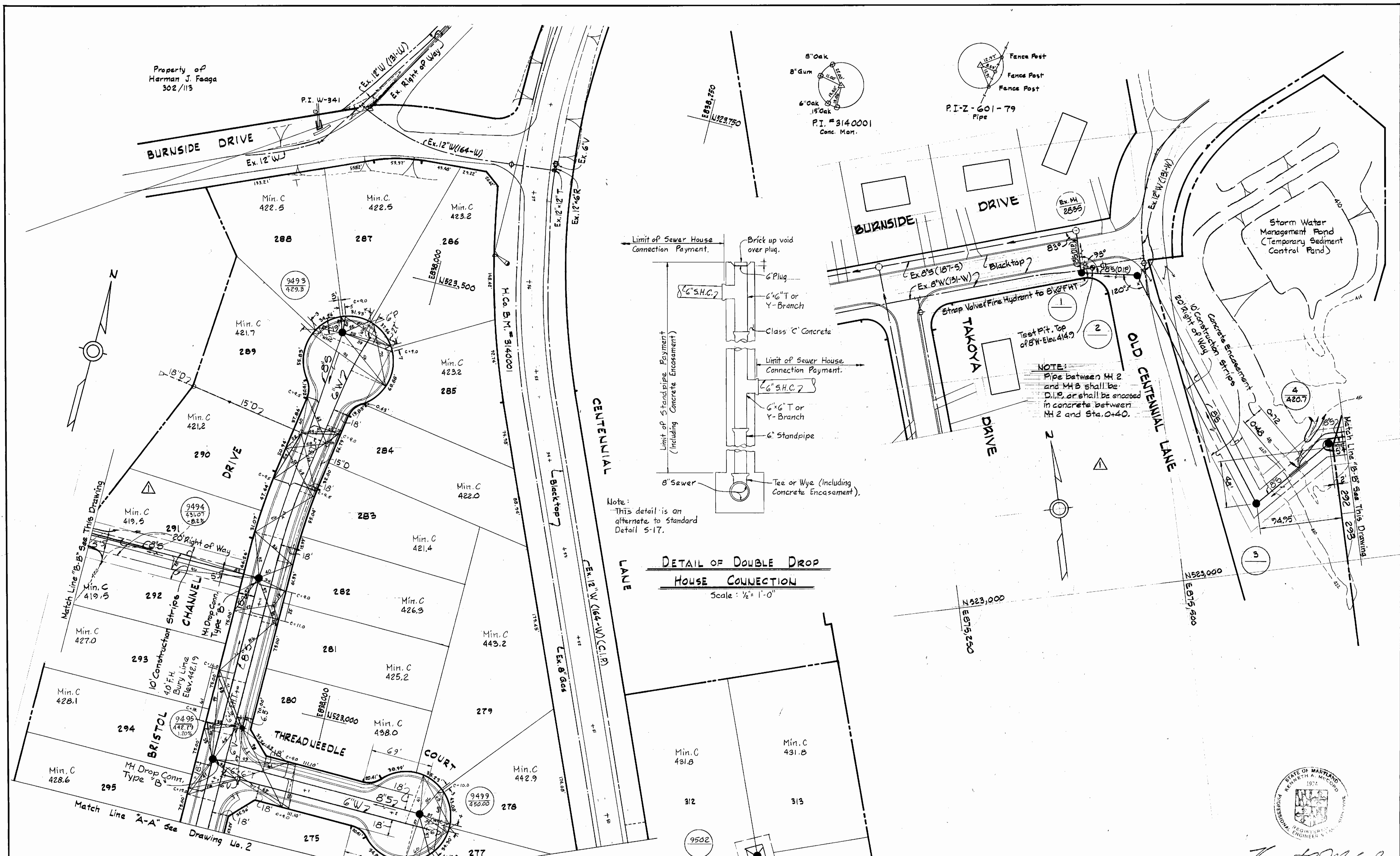
1-2-80  
 DATE

CONTRACT NO. 2902D-W85

PLAN OF  
 WATER & SEWER MAINS

BURLEIGH MANOR  
 ELECTION DISTRICT  
 ELLICOTT CITY NO. 2

DRAWING NO. 2 OF 4  
 SCALE 1" = 50'



DEPARTMENT OF PUBLIC WORKS  
 HOWARD COUNTY, MARYLAND  
 James L. Ellis, 12/17/83  
 CHIEF-BUREAU OF UTILITIES  
 Whitman, Requardt & Associates  
 ENGINEERS  
 1304 ST. PAUL ST.  
 BALTIMORE, MARYLAND

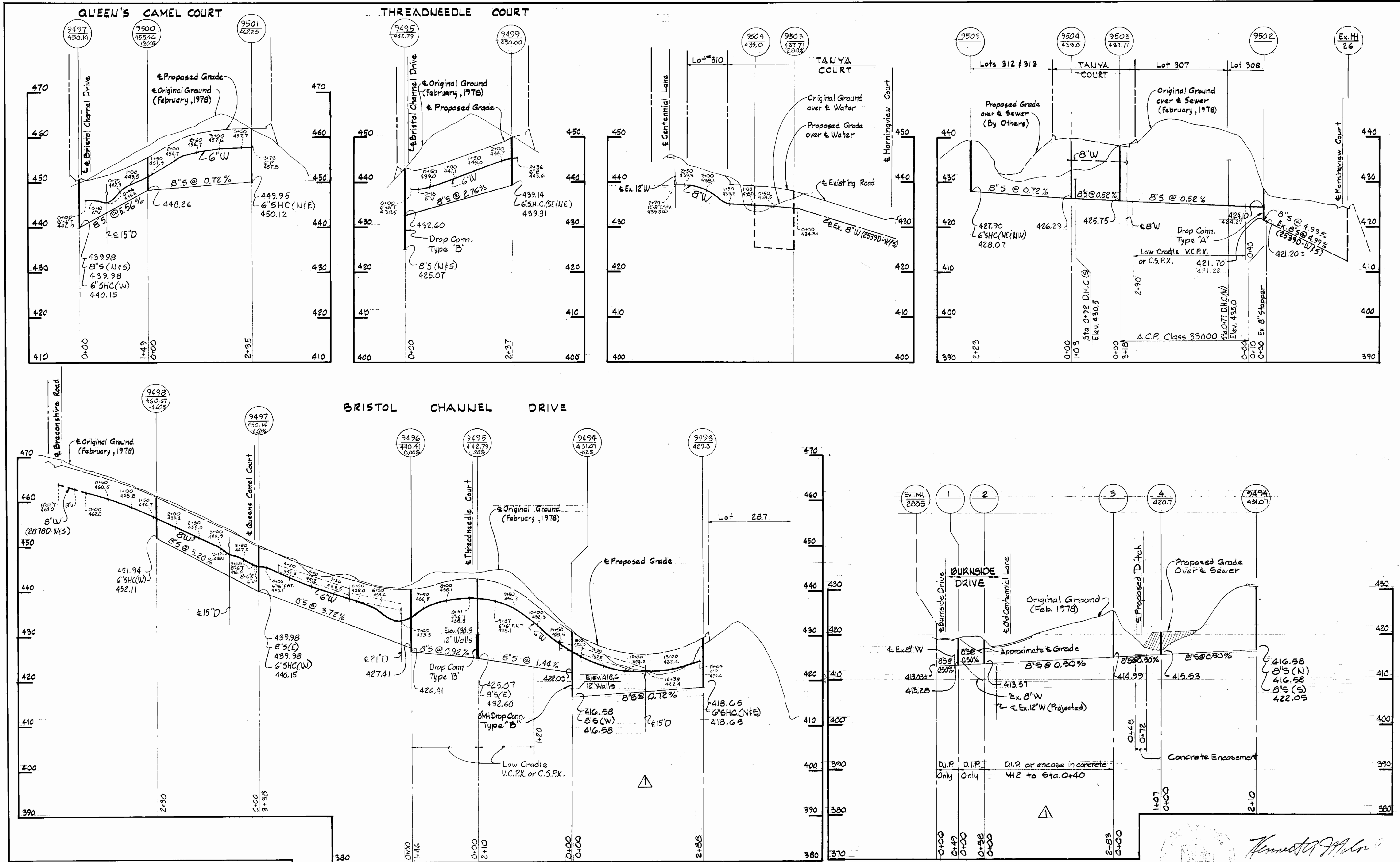
DEPARTMENT OF PUBLIC WORKS  
 HOWARD COUNTY, MARYLAND  
 1-2-80  
 DATE  
 Director of Public Works

PLAN  
 Scale: 1" = 50'  
 CONTRACT NO. 2902D-W8S  
 PLAN & DETAIL OF  
 WATER & SEWER MAINS

12/2/83	Changed Sewer Alignment
No.	DATE
REVISION	

BURLEIGH MANOR  
 ELECTION DISTRICT  
 ELLICOTT CITY NO. 2

Burleigh Manor  
 Section 5  
 Contract No. 2902D-Wf5  
 DRAWING NO. 3 OF 4  
 SCALE AS SHOWN  
 24-523-899  
 24-524-899



DEPARTMENT OF PUBLIC WORKS  
 HOWARD COUNTY, MARYLAND  
*James L. Gligo 12/15/79* *W. O. Lambert 1-2-80*  
 CHIEF-BUREAU OF UTILITIES-DATE CHIEF-BUREAU OF ENGINEERING-DATE  
**WHITMAN, REQUARDT & ASSOCIATES**  
 ENGINEERS  
 1304 ST. PAUL ST.  
 BALTIMORE, MARYLAND

DEPARTMENT OF PUBLIC WORKS  
 HOWARD COUNTY, MARYLAND  
 1-7-80  
 DATE  
*John F. Nimmy*  
 DIRECTOR OF PUBLIC WORKS

CONTRACT NO. 2902D-WBS

No.	DATE	REVISION
1	12/2/83	Changed Sewer Alignment

PROFILES OF WATER & SEWER MAINS  
 BURLEIGH MANOR ELECTION DISTRICT ELLICOTT CITY NO.2

Burleigh Manor Section 5 Contract No. 2902D-W/5  
**DRAWING NO. 4 OF 4**  
**SCALE H:V = 1:100**