

Water & Sewer Code
 Water No. E-30
 Sewer No. 5322500

LOCATION MAP
 SCALE: 1" = 600'

GENERAL NOTES

- All water mains to be C.I.P., A.I.P. unless otherwise shown.
- Top of all water mains to have a minimum of 3.5 ft. cover unless otherwise noted.
- All valves shall be strapped to tees in accordance with standard details.
- Block all fittings with concrete, see standards bound in specifications.
- Bury line elevations on fire hydrants shall be set to the elevations shown on the drawings. All fire hydrants shall be strapped and buttressed with concrete in accordance with standard details. Soil around the fire hydrants to be compacted in accordance with Section 5-15 of the Standard Specifications.
- All sewer mains shall be C.S.P.X., V.C.P.X. or A.C.P. Class 2400 unless otherwise noted.
- The contractor shall provide a joint in all sewer mains within 2'-0" of exterior manhole wall.
- All manholes shall be 4'-0" inside diameter, unless otherwise noted.
- Approximate locations of existing mains are shown. The contractor shall take all necessary precautions to protect existing mains and services, and maintain uninterrupted supply. Any damage incurred shall be repaired immediately.
- All horizontal controls are based on Maryland State Coordinates.
- All vertical controls are based on U.S.G.S. Datum.
- All pipe elevations shown are invert elevations.
- Clear all utilities by a minimum of 6'; clear all poles by 2'-0" minimum or tunnel as required.
- For all standard details see standards bound in specifications.
- Contractor shall locate existing utilities in advance of construction in the vicinity of proposed utilities.
- Contractor shall notify the following utilities or agencies at least five (5) days before starting work shown on these plans.
 State Highway Administration - 531-5533
 Baltimore Gas and Electric Company - Underground Electric Distribution Engineering - Damage Control - 234-3631
 Baltimore Gas and Electric Company - Underground Gas Distribution Engineering - 552-0100
 Chesapeake and Potomac Telephone Co. - 725-9276
 American Telephone and Telegraph - Cable Location Division - 301-393-3553
 Colonial Pipeline Company - 781-4641.
- Trees are to be protected from damage to maximum extent. Trees located within the construction strip are not to be removed or damaged by the contractor.
- Contractor shall remove trees, stumps and roots along line of excavation as directed by the Engineer. Payment for such removal shall be included in the unit price bid for excavation and backfill for Water and Sewer mains.
- Place regulation "Men Working" and warning signs as required to comply with Maryland State Highway Administration Manual Of Traffic Control for Highway Construction and Maintenance Operations.

Type of Buildings	Single Family Detached
Number of Lots	30
Number of Water House Connections	30
Number of Sewer House Connections	30
Drainage Area	Savage

QUANTITIES			
Item	Estimated	As Built	Material/Supplier
8" Sewer	819 L.F.	814.5	JOHNS MANVILLE ACE
8" Water	1029 L.F.	1029.0	DUCTILE IRON - AMSTEAD-GRIFFIN-20
8" Valve	1	1.0	M&H
Fire Hydrant	2	2.0	M&H
Manhole	5	5.0	



J. N. C. 4-19-79

DEPARTMENT OF PUBLIC WORKS
 HOWARD COUNTY, MARYLAND
 James L. Olin, Chief Bureau of Utilities, Date 1-8-80
 W. O. Lambert, Chief Bureau of Engineering, Date

CLARK • FINEFROCK & SACKETT
 ENGINEERS • PLANNERS • SURVEYORS
 11315 LOCKWOOD DRIVE • SILVER SPRING, MARYLAND • (301) 593-3400

DEPARTMENT OF PUBLIC WORKS
 HOWARD COUNTY, MARYLAND
 Gary F. Nunnery, Director of Public Works, Date 1-9-80

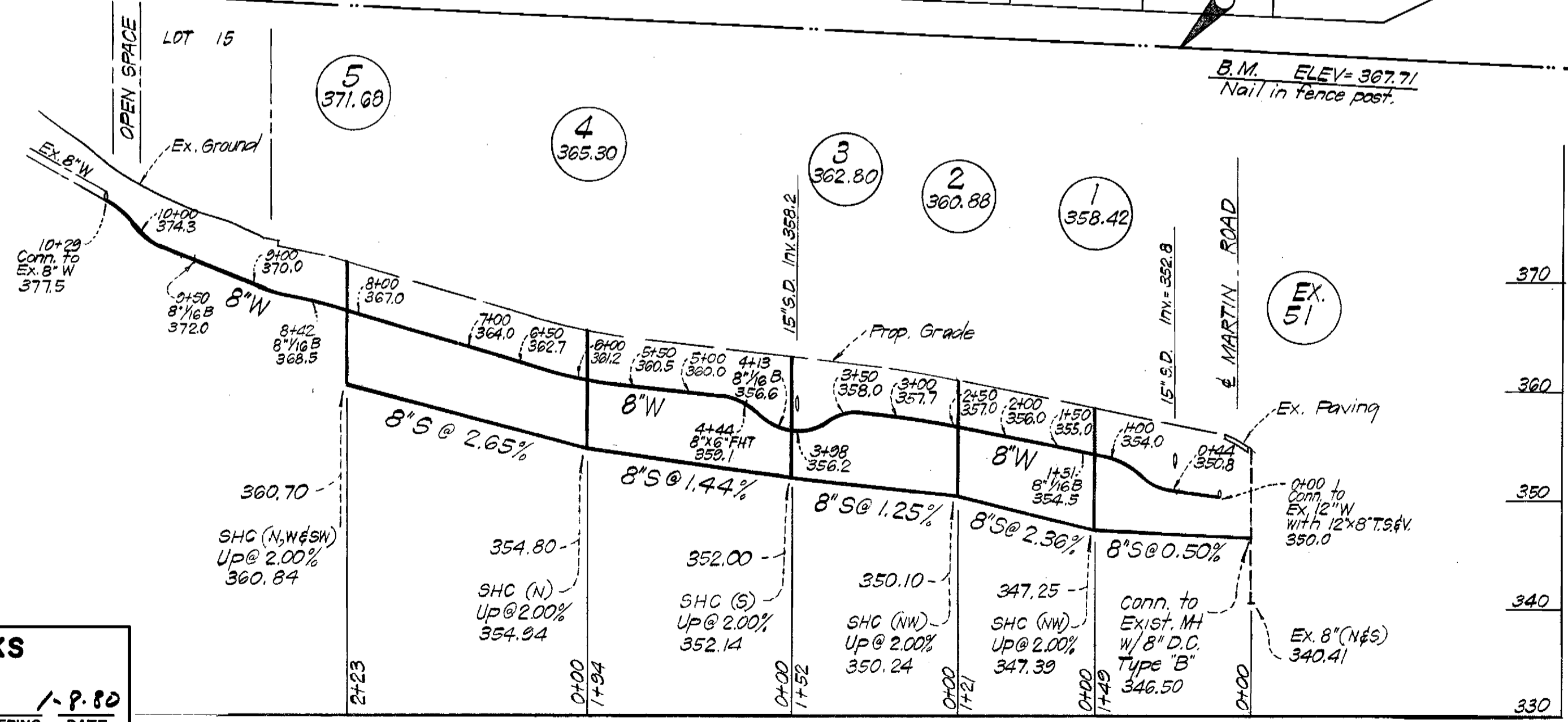
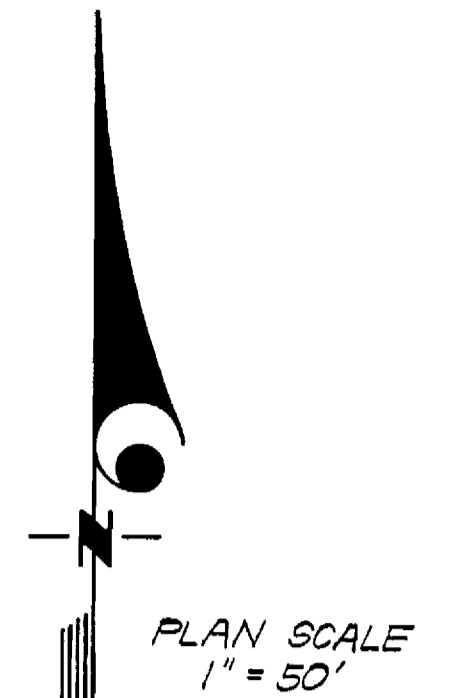
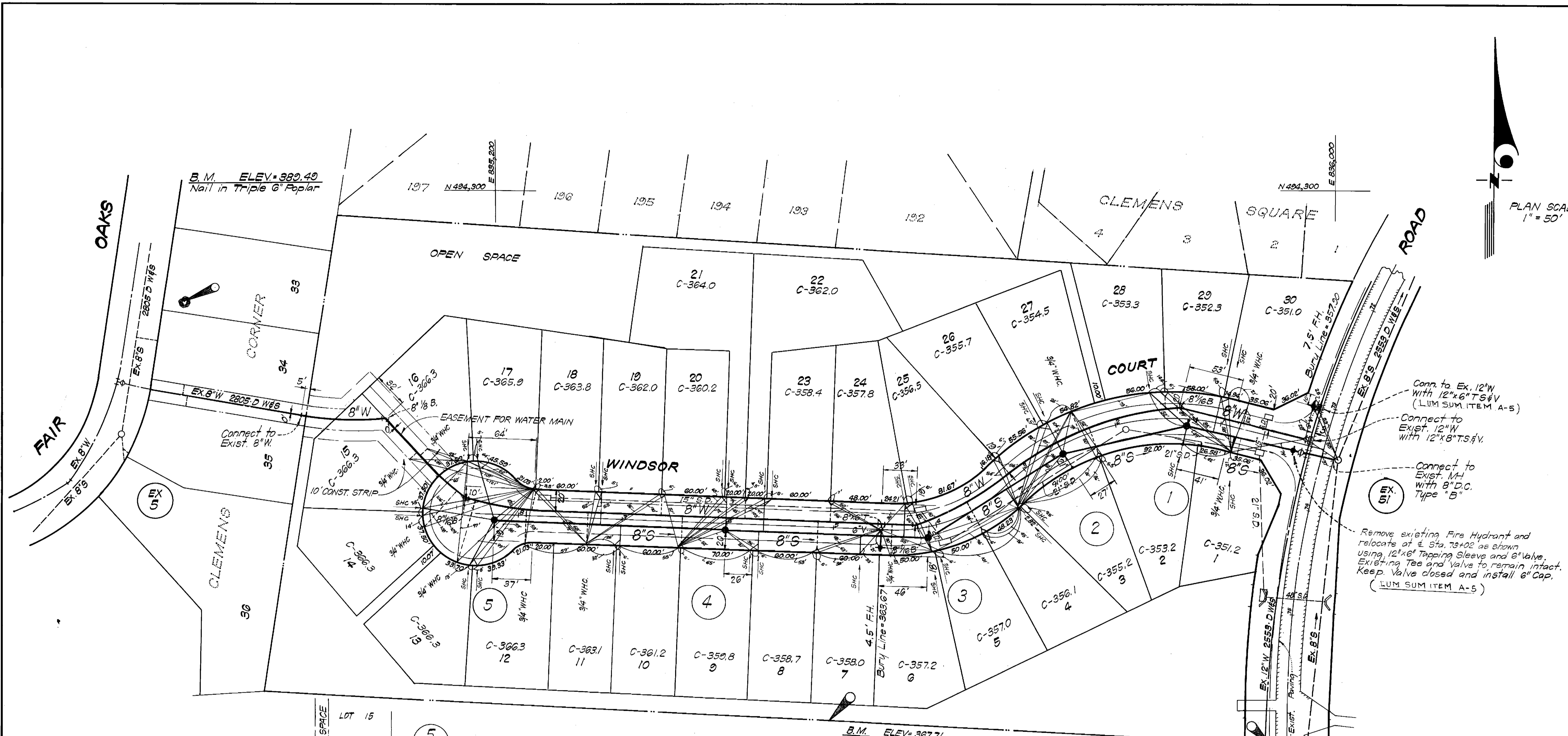
CONTRACT NO. 201-D-WES

LOCATION MAP
 WATER & SEWER MAINS

COLUMBIA
 CAROLINE ESTATES
 ELECTION DISTRICT GUILFORD No. 6

CAROLINE ESTATES
 Section-1 Area-1
 Lots 1 Thru 31
 C-2201-D-WES

DRAWING NO. OF	1 / 2
SCALE	As Shown



PROFILE SCALE
 HOR. : 1" = 100'
 VERT. : 1" = 10'

B.M. ELEV. = 356.60
 End top of curb.



CAROLINE ESTATES
 Section-1 Area-1
 Lots 1 Thru 31
 C-2301-D-W&S

DEPARTMENT OF PUBLIC WORKS
 HOWARD COUNTY, MARYLAND
 James L. Blair, Chief-Bureau of Utilities, DATE 1/9/80
 W. O. Falber, Chief-Bureau of Engineering, DATE 1-9-80

CLARK • FINEFROCK & SACKETT
 ENGINEERS • PLANNERS • SURVEYORS
 11315 LOCKWOOD DRIVE • SILVER SPRING, MARYLAND • (301) 593-3400

DEPARTMENT OF PUBLIC WORKS
 HOWARD COUNTY, MARYLAND
 David F. Nunnery, Director of Public Works, DATE 1-9-80

CONTRACT NO. 2301-D-W&S

PLAN & PROFILE OF
 WATER & SEWER MAINS

COLUMBIA
 CAROLINE ESTATES
 ELECTION DISTRICT GUILFORD No. 6

DRAWING NO. OF	2 2	SCALE	As Shown
----------------	--------	-------	----------

AS-BUILT MAY 7, 1980