

WATER AND SEWER CODE  
 WATER No. F04  
 SEWER No. 1400530

WATER & SEWER LOCATION MAP  
 SCALE: 1" = 600'

- NOTES:
- APPROXIMATE LOCATION OF EXISTING UTILITIES ARE SHOWN. THE CONTRACTOR SHALL TAKE ALL NECESSARY PRECAUTIONS TO PROTECT EXISTING UTILITIES & SERVICES & MAINTAIN UNINTERRUPTED SUPPLY. ANY DAMAGE INCURRED SHALL BE REPAIRED IMMEDIATELY.
  - ALL HORIZONTAL CONTROLS ARE BASED ON MARYLAND STATE COORDINATES.
  - ALL VERTICAL CONTROLS ARE BASED ON U.S.G.S. DATUM.
  - ALL PIPE ELEVATIONS ARE INVERT ELEVATIONS.
  - CLEAR ALL UTILITIES BY A MINIMUM 6" CLEAR. ALL POLES 2'-0" MIN. OR TOWER AS REQUIRED.
  - FOR ALL STANDARD DETAILS SEE STANDARDS BOUND IN SPECIFICATIONS.
  - CONTRACTOR SHALL NOTIFY THE FOLLOWING UTILITIES OR AGENCIES AT LEAST FIVE (5) DAYS BEFORE STARTING WORK SHOWN ON THESE PLANS: STATE HIGHWAY ADMINISTRATION 281-5553, BALTIMORE GAS & ELECTRIC CO. 357-0100 HOWARD COUNTY BUREAU OF UTILITIES 992-2366
  - CHEESAPEAKE & POTOMAC TELEPHONE CO. 725-1976, AMERICAN TELEPHONE & TELEGRAPH CABLE LOCATION DIVISION 301-893-3553, COLOMBIA PIPELINE CO. 781-4641.
  - CONTRACTOR SHALL LOCATE EXISTING UTILITIES IN ADVANCE OF CONSTRUCTION OPERATIONS IN THE VICINITY OF THE PROPOSED UTILITIES.
  - CONTRACTOR SHALL REMOVE TREES, STUMPS, AND POOLS ALONG LINE OF EXCAVATION AS DIRECTED BY THE ENGINEER.
  - TREES ARE TO BE PROTECTED FROM DAMAGE TO MAXIMUM EXTENT. TREES LOCATED WITHIN CONSTRUCTION STRIPS ARE NOT TO BE REMOVED OR DAMAGED.
  - PLACE REGULATION MEN WORKING AND WARNING SIGNS AS REQUIRED TO COMPLY WITH THE MARYLAND STATE HIGHWAY ADMINISTRATION MANUAL OF TRAFFIC CONTROL FOR HIGHWAY CONSTRUCTION AND MAINTENANCE OPERATIONS.
  - ALL WATER MAINS TO BE C.I.P. OR D.I.P. UNLESS OTHERWISE NOTED.
  - TOP OF ALL WATER MAINS TO HAVE 3/8 FEET OF COVER UNLESS OTHERWISE NOTED.
  - ALL VALVES SHALL BE STRAPPED TO TREES IN ACCORDANCE WITH STANDARD DETAILS.
  - BLOCK ALL FITTINGS WITH CONCRETE, SEE STANDARDS BOUND IN SPECIFICATIONS.
  - BURY LINE ELEVATIONS ON FIRE HYDRANTS SHALL BE SET TO THE ELEVATIONS SHOWN ON THE DRAWINGS. ALL FIRE HYDRANTS SHALL BE STRAPPED & BATTRESSED WITH CONCRETE IN ACCORDANCE WITH STANDARD DETAILS. ALL AROUND FIRE HYDRANTS TO BE CONTRACTED IN ACCORDANCE WITH SECTION 4-B-15 OF THE STANDARD SPECIFICATIONS.
  - ALL WATER HOUSE CONNECTIONS SHALL BE METER SETTING FOR INSIDE.
  - ALL SEWER MAINS SHALL BE C.S.P.X. OR V.C.P.X. OR A.C.P. CLASS 2400 UNLESS OTHERWISE SHOWN.
  - THE CONTRACTOR SHALL PROVIDE A JOINT IN ALL SEWER MAINS WITHIN 2'-0" OF EXTERIOR WALKHOLE WALL.
  - ALL MANHOLES SHALL BE 4'-0" INSIDE DIAMETER, UNLESS OTHERWISE NOTED.
  - BENCH MARK: HOWARD COUNTY STA. 3042002 ELEVATION 377.55  
 DESCRIPTION: CONCRETE MONUMENT 0.50' BELOW SURFACE, 14" OFF & COLUMBIA PIKE (NORTH SIDE) 175' N.E. COOKS LANE.  
 BENCH MARK: HOWARD COUNTY STA. 3045001 ELEVATION 416.87  
 DESCRIPTION: CONCRETE MONUMENT AT SURFACE 10' NORTH OF & COLUMBIA PIKE, 180' NORTHWEST OF & AUTUMN DRIVE, 180' NORTHEAST OF & TOLL HOUSE ROAD.

TYPE OF BUILDINGS: SINGLE FAMILY DWELLINGS  
 NUMBER OF LOTS: 35  
 NUMBER OF WATER HOUSE CONNECTIONS: 35  
 NUMBER OF SEWER HOUSE CONNECTIONS: 35  
 DRAINAGE AREA: PATAPSCO

QUANTITIES

ITEM	ESTIMATED	AS-BUILT	MATERIAL - SUPPLIER
3" SEWER	1509 L.F.	1480	PVC Certain-teed
MANHOLE	8 EA.	8 EA.	Campbell Foundry
8" WATER	950 L.F.	923	DIP Griffin
6" WATER	594 L.F.	582	DIP Griffin
8" VALVE	3 EA.	3 EA.	Mueller
6" VALVE (EXCLUDE F.H. VALVES)	2 EA.	2	Mueller
FIRE HYDRANTS	2 EA.	2	B&B Am. Darling

LOT 1  
 PART OF THE PROPERTY OF  
 JOSEPH H. CLARK  
 PLAT 25/15

RENE GELDER  
 701/002  
 ZONING: R-20 DISTRICT  
 (RESIDENTIAL SINGLE)

DATE: 1/30/80  
 REVISIONS: INSTALL DOUBLE SERVICE WITH Y-BRANCH FOR LOTS 20 & 21  
 REVISION: ADD DEEP CONNECTION AND HEADSMENTS  
 SEE PROFILE SECTION ON SHEET 2 OF 2

DEPARTMENT OF PUBLIC WORKS  
 HOWARD COUNTY, MARYLAND

DIRECTOR OF PUBLIC WORKS: [Signature]  
 CHIEF BUREAU OF ENGINEERING: [Signature]  
 CHIEF BUREAU OF UTILITIES: [Signature]

HOOKINS ASSOCIATES INC.  
 ENGINEERS & LAND SURVEYORS  
 100 NORTH MAIN STREET  
 BEL AIR, MARYLAND 21014

CONTRACT No.: 14-0898-0

PLAN  
 WATER & SEWER MAINS

CHOCTAW DRIVE  
 ZUNI COURT HOPI COURT  
 "KEYWAYDIN"  
 SECOND ELECTION DISTRICT  
 HOWARD COUNTY, MD.

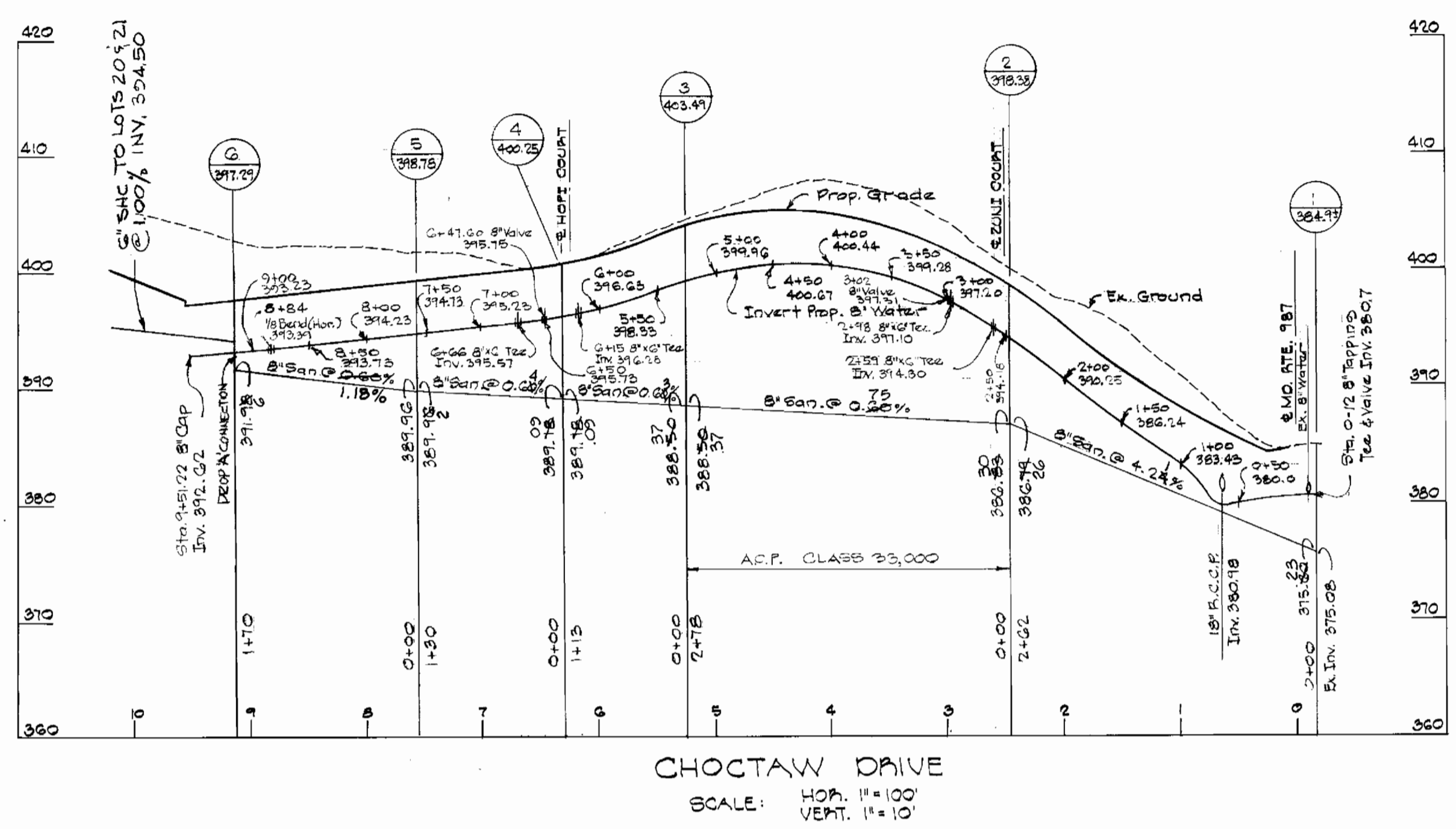
CONTRACT No. 14-0898-0  
 DRAWING No. 1 OF 2  
 PLAN SCALE: 1" = 50'  
 DATE: MARCH 17, 1980

APPROVED: [Signature]  
 HOWARD C.O.E.  
 DATE: 1/09/80

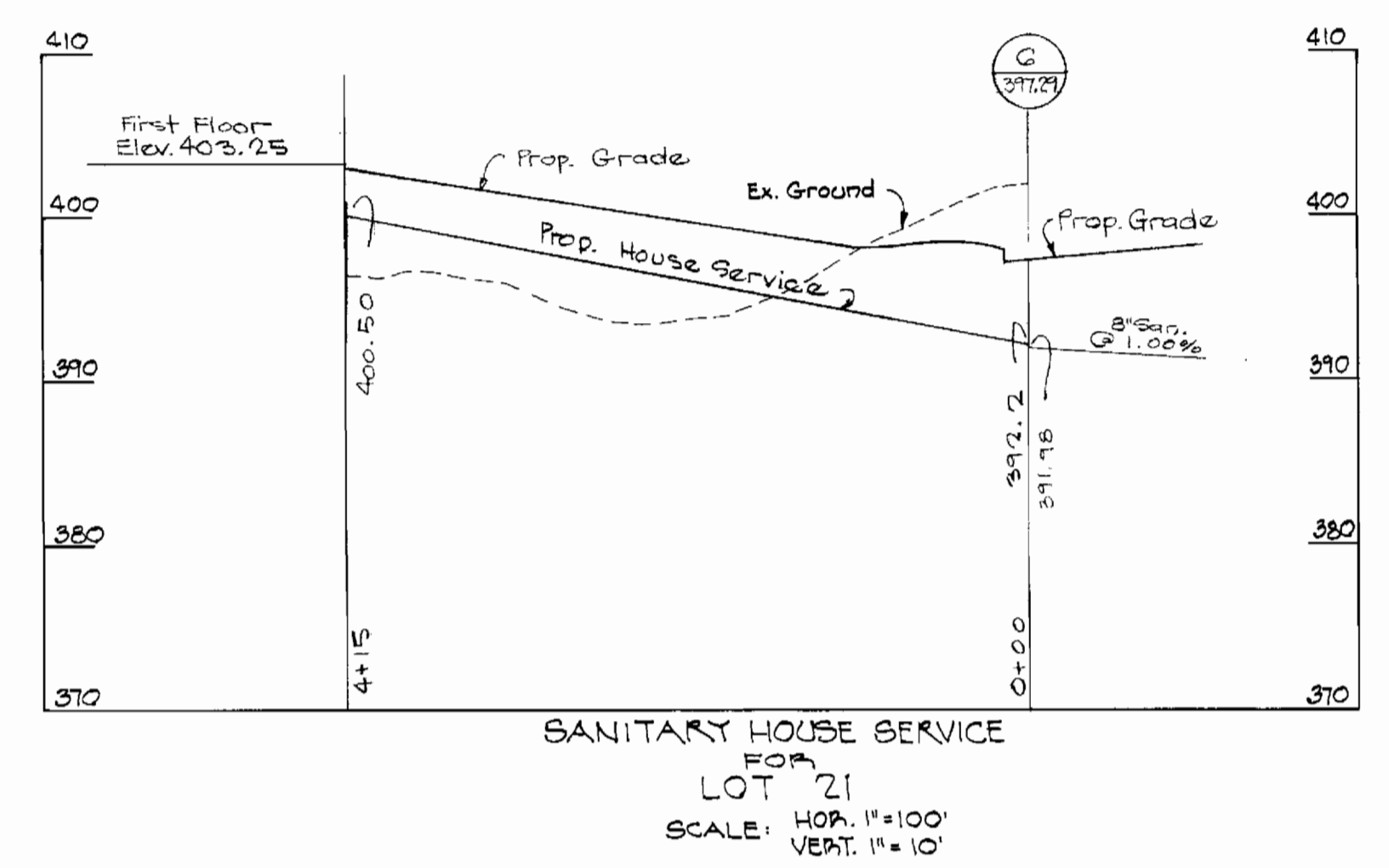
SEDIMENT CONTROL MEASURES FOR THIS CONTRACT WILL BE IMPLEMENTED IN ACCORDANCE WITH SECTION 14 OF THESE SPECIFICATIONS AND ALSO AS SHOWN ON THE GRADING & SEDIMENT CONTROL PLAN, F-80-32

REVIEWED FOR HOWARD SOIL CONSERVATION DISTRICT AND MEETS TECHNICAL REQUIREMENT

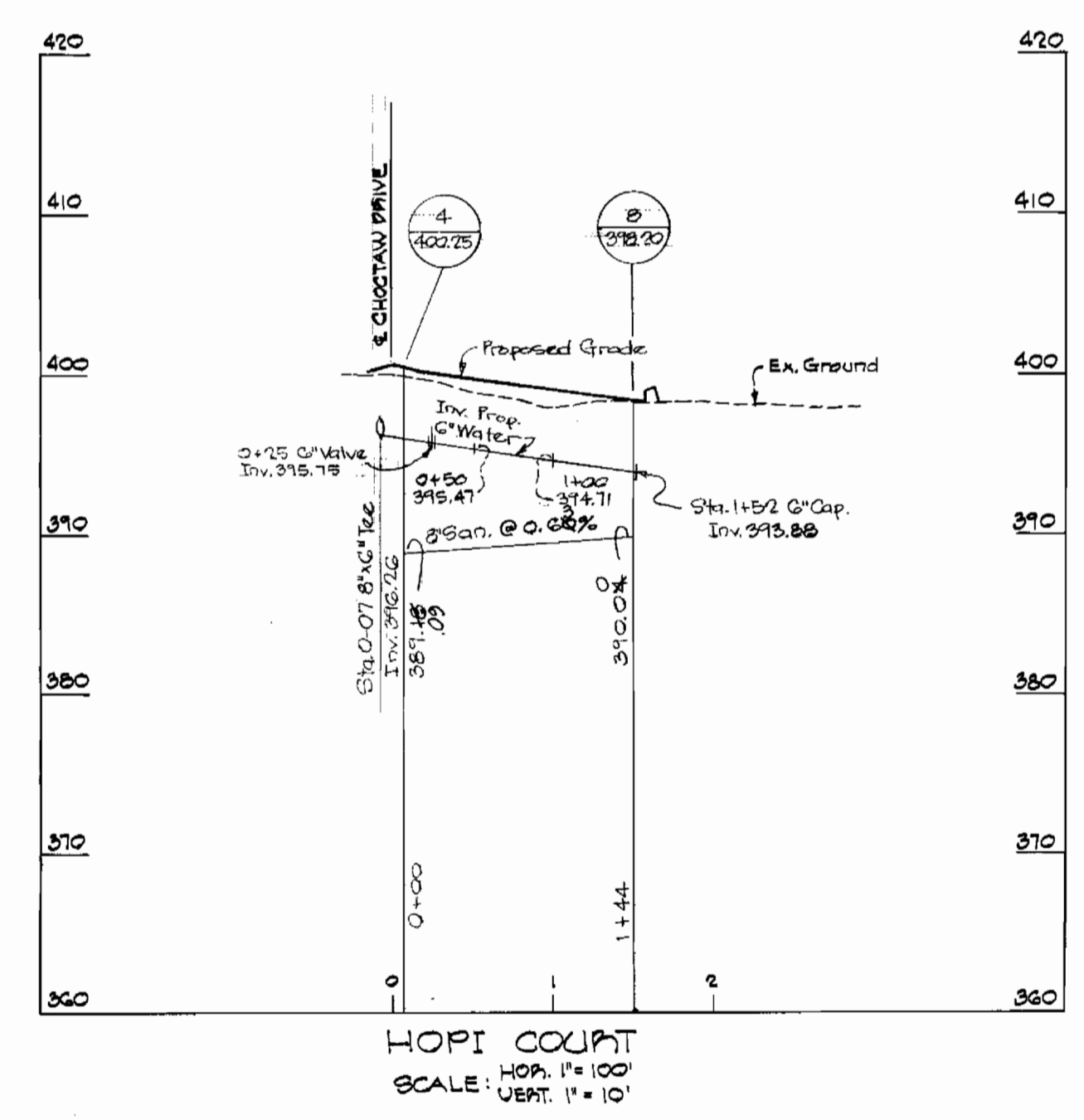
[Signature]  
 U.S. SOIL CONSERVATION SERVICE  
 DATE: 1/09/80



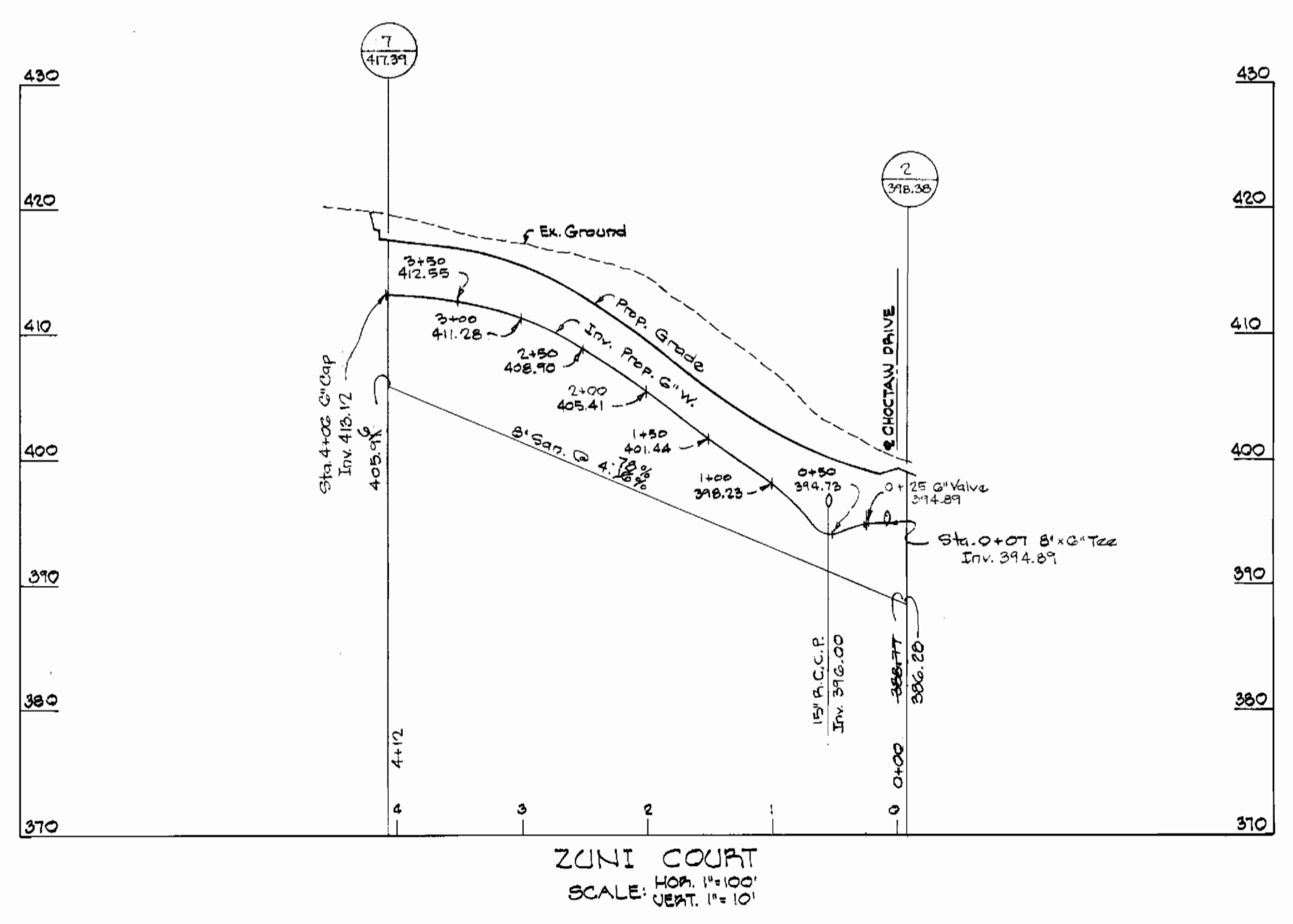
CHOCTAW DRIVE  
SCALE: HOP. 1"=100'  
VERT. 1"=10'



SANITARY HOUSE SERVICE  
FOR  
LOT 21  
SCALE: HOP. 1"=100'  
VERT. 1"=10'



HOPICOURT  
SCALE: HOP. 1"=100'  
VERT. 1"=10'



ZUNICOURT  
SCALE: HOP. 1"=100'  
VERT. 1"=10'



SEDIMENT CONTROL MEASURES FOR THIS CONTRACT WILL BE IMPLEMENTED IN ACCORDANCE WITH SECTION 14 OF THESE SPECIFICATIONS AND ALSO AS SHOWN ON THE GRADING & SEDIMENT CONTROL PLAN, E-90-52

THIS DEVELOPMENT PLAN IS APPROVED FOR SOIL EROSION AND SEDIMENT CONTROL BY THE HOWARD SOIL CONSERVATION DISTRICT.  
APPROVED William T. Rowe 11-4-80  
HOWARD S.C.D. DATE

REVIEWED FOR HOWARD SOIL CONSERVATION DISTRICT AND MEETS TECHNICAL REQUIREMENT.  
James M. Helman 11/4/80  
U.S. SOIL CONSERVATION SERVICE DATE

DEPARTMENT OF PUBLIC WORKS  
HOWARD COUNTY, MARYLAND  
11-6-80  
DIRECTOR OF PUBLIC WORKS DATE  
CHIEF BUREAU OF UTILITIES DATE  
CHIEF LAND DEVELOPMENT DIVISION DATE

HUDKINS ASSOCIATES INC.  
ENGINEERS & LAND SURVEYORS  
100 NORTH MAIN STREET  
BEL AIR, MARYLAND 21014

CONTRACT NO.: 14-0898-D

PROFILES  
WATER & SEWER MAINS

CHOCTAW DRIVE  
ZUNI COURT HOPICOURT  
"KEYWAY 1011"  
SECOND ELECTION DISTRICT HOWARD COUNTY, MARYLAND

DRAWING NO. 2 OF 2  
CONTRACT NO. 14-0898-D  
AS SHOWN U.O. 78-135  
DATE: MARCH 17, 1980  
AS BUILT, FEB. 1984