

REVIEWED FOR HOWARD SOIL CONSERVATION DISTRICT AND MEETS TECHNICAL REQUIREMENT
Signature 4-16-80
 SIGNATURE DATE
 US SOIL CONSERVATION SERVICE

This Development Plan is approved for Soil Erosion and Sediment Control by the Howard County Conservation District
 APPROVED:
William J. Rowe 4-18-80
 HOWARD C.O.D. DATE

Sediment Control Measures for this Contract will be implemented in accordance with Section 14 of the Specifications.

Waste Water Disposal: Savage
 Type of buildings: Single Family
 No. of S.H.C. 94
 No. of W.H.C. 93

WATER & SEWER CODE
 County Use:
 Water: E 15
 Sewer: 6200000

CONTRACT NO. 34-0897-D

VILLAGE OF KINGS CONTRIVANCE

HOWARD COUNTY, MARYLAND

DEPARTMENT OF PUBLIC WORKS

QUANTITIES			
ITEM	BID	AS-BUILT	MATERIAL / SUPPLIER
8" Sewer	4,630 LF	4551.55	A.C.P./CERTAINTED
Manholes	250 V.F.		CONC. PRE-CAST/C.P.P.
8" Water	1,430 LF	1560.5	DUCTILE/ATLANTIC STATES
6" Water	2,480 LF	2271.0	DUCTILE/ATLANTIC STATES
8" Valves	1	1.0	
6" V (Excluding F.H.V.)	6	6.0	
Fire Hydrants	6	6.0	AMERICAN
6" SHC PIPE		2100.5	A.C.P./CERTAINTED

NOTE:
 LOT LINES SHOWN HEREON OTHER THAN LOTS 1 TO 31 AND 125 TO 131 DO NOT EXIST AND ARE SHOWN FOR PURPOSE OF LOCATING WATER AND SEWER HOUSE CONNECTIONS.

(10) RECORDED LOTS - WATER AND SEWER AVAILABLE

Village of Kings Contrivance
 Section 3, Area 2, Phase II, Part 1
 Contract No. 34-0897-D

DEPARTMENT OF PUBLIC WORKS
 HOWARD COUNTY, MARYLAND

Signature 4-23-80
 CHIEF-BUREAU OF UTILITIES - DATE CHIEF-BUREAU OF ENGINEERING - DATE

WHITMAN, REQUARDT & ASSOCIATES
 ENGINEERS
 1304 ST. PAUL ST.
 BALTIMORE, MARYLAND

DEPARTMENT OF PUBLIC WORKS
 HOWARD COUNTY, MARYLAND

Signature 4-23-80
 DIRECTOR OF PUBLIC WORKS DATE

CONTRACT NO. 34-0897-D

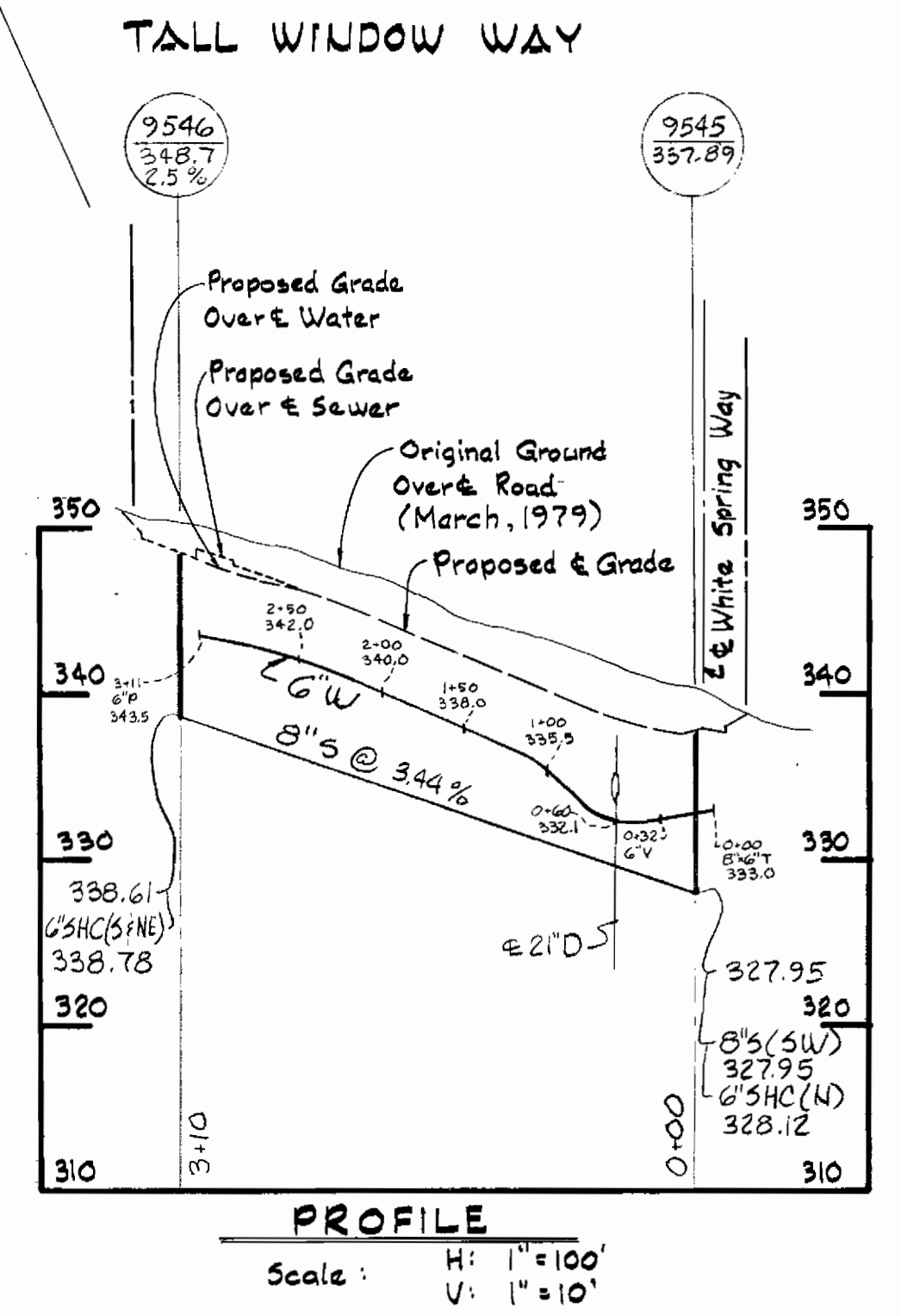
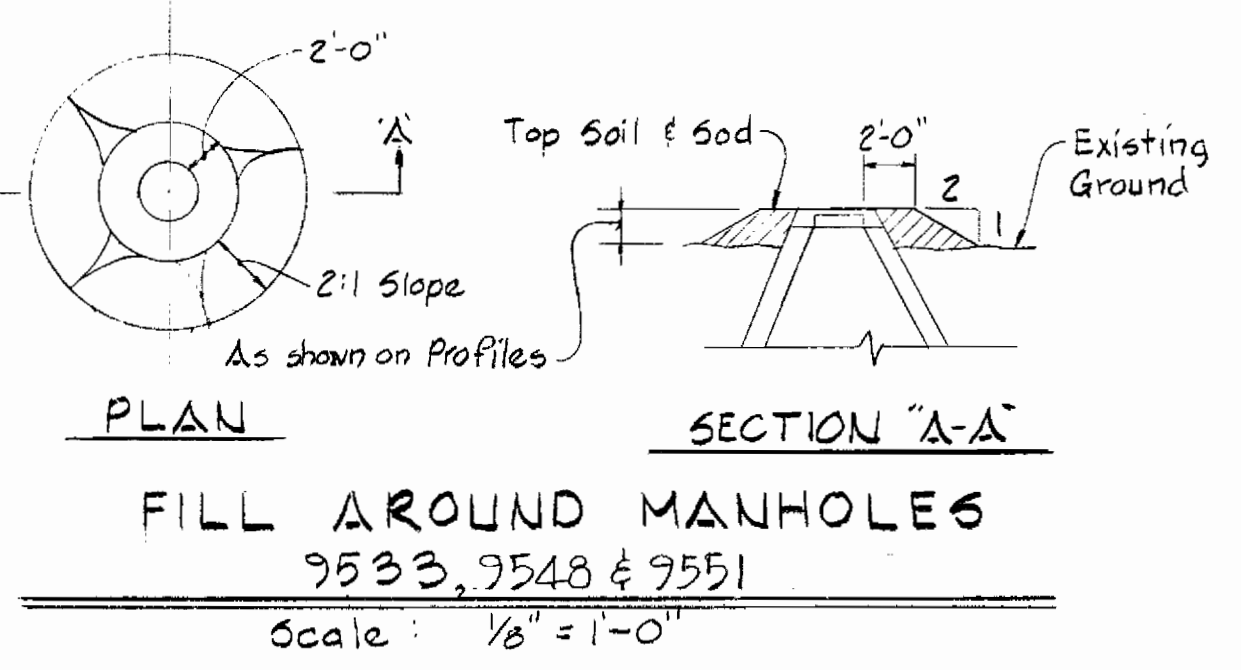
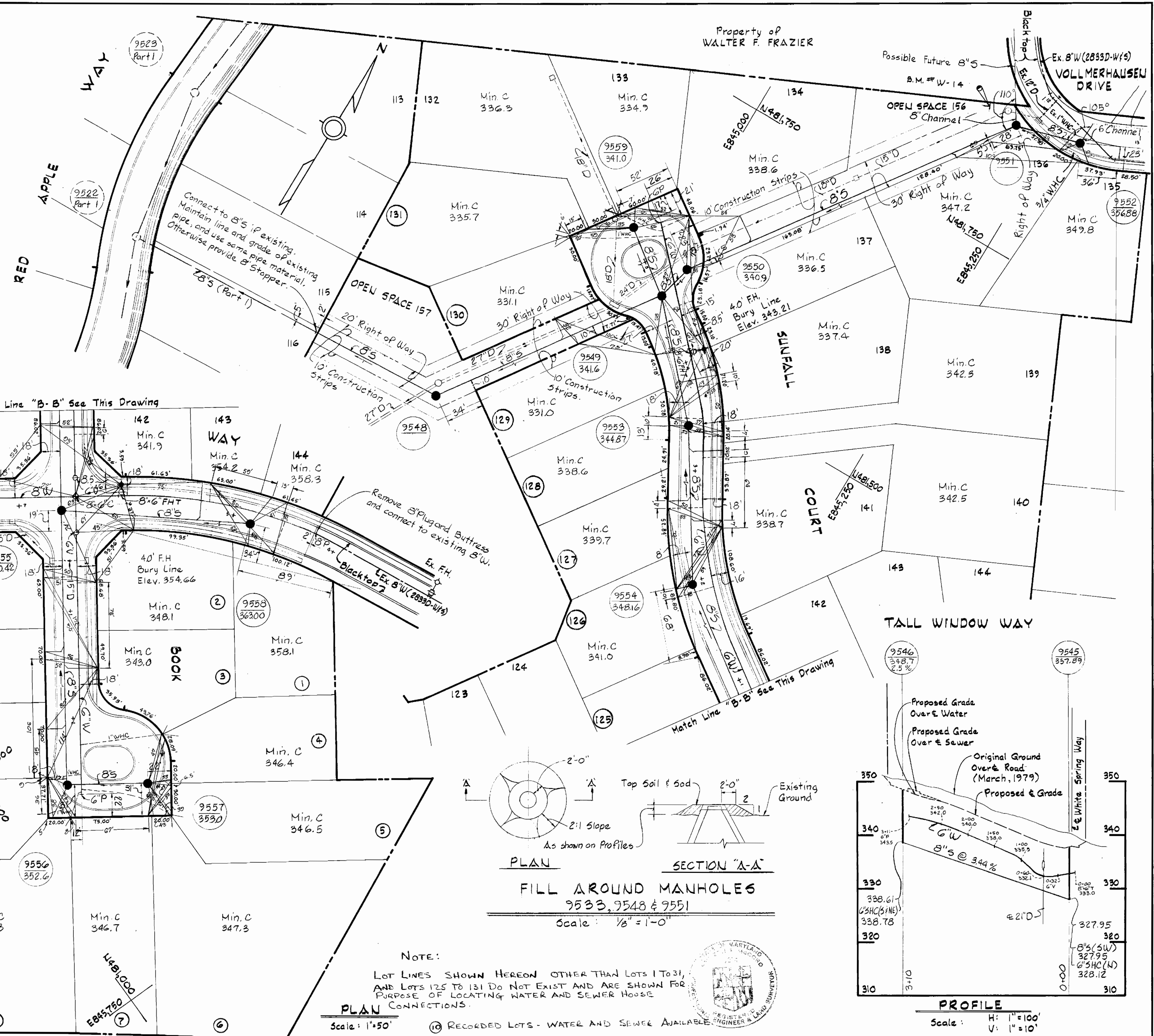
LOCATION MAP OF
 WATER & SEWER MAINS

COLUMBIA
 VILLAGE OF KINGS CONTRIVANCE
 ELECTION DISTRICT GUILFORD NO. 6

DRAWING NO. 1 OF 4 SCALE 1"=600'

GENERAL NOTES

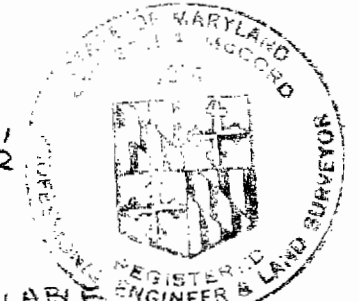
- APPROXIMATE LOCATION OF EXISTING MAINS ARE SHOWN. THE CONTRACTOR SHALL TAKE ALL NECESSARY PRECAUTIONS TO PROTECT EXISTING MAINS AND SERVICES AND MAINTAIN UNINTERRUPTED SUPPLY. ANY DAMAGE INCURRED SHALL BE REPAIRED IMMEDIATELY.
- ALL PIPE ELEVATIONS SHOWN ARE INVERT ELEVATIONS.
- THE CONTRACTOR SHALL LOCATE EXISTING UTILITIES A MINIMUM OF TWO WEEKS IN ADVANCE OF CONSTRUCTION OPERATIONS IN VICINITY OF UTILITIES.
- THE CONTRACTOR SHALL NOTIFY THE FOLLOWING UTILITIES OR AGENCIES AT LEAST FIVE DAYS BEFORE STARTING WORK SHOWN ON THESE PLANS.
BALTIMORE GAS AND ELECTRIC COMPANY - UNDERGROUND ELECTRIC DISTRIBUTION ENGINEERING DAMAGE CONTROL 234-5691
UNDERGROUND GAS DISTRIBUTION ENGINEERING 234-5621
CHESAPEAKE AND POTOMAC TELEPHONE COMPANY 393-3648.
MISS UTILITY - 1 - 559-0100
- FOR ALL STANDARD DETAILS, SEE STANDARDS BOUND IN SPECIFICATIONS.
- ALL HORIZONTAL AND VERTICAL CONTROLS ARE BASED ON MARYLAND STATE DATUM.
- CLEAR ALL UTILITIES BY A MINIMUM OF 6".
- BLOCK ALL FITTINGS WITH CONCRETE, SEE STANDARDS BOUND IN SPECIFICATIONS.
- ALL WATER MAINS SHALL HAVE A MINIMUM OF 3' COVER.
- ALL WATER MAINS SHALL BE C.I.P. OR D.I.P. UNLESS OTHERWISE NOTED.
- ALL VALVES SHALL BE STRAPPED TO TEES WHERE APPLICABLE IN ACCORDANCE WITH THE STANDARD DETAILS.
- ALL FIRE HYDRANTS SHALL BE STRAPPED AND BUTTRESSED IN ACCORDANCE WITH THE STANDARD DETAILS. SOIL AROUND THE HYDRANTS SHALL BE COMPACTED IN ACCORDANCE WITH SECTION 5-15 OF THE STANDARD SPECIFICATIONS.
- PAYMENT FOR STRAPPING FIRE HYDRANTS AND VALVES WILL BE INCLUDED IN UNIT PRICE BID FOR FURNISHING AND LAYING WATER MAINS.
- BURY LINE ELEVATIONS ON FIRE HYDRANTS SHALL BE SET TO THE ELEVATION SHOWN ON THE DRAWINGS.
- ALL W.H.C.'S SHALL BE 3/4" DIAMETER UNLESS OTHERWISE NOTED.
- WATER SERVICES SHALL BE FOR INSIDE METER SETTINGS.
- ALL SEWER MAINS SHALL BE C.S.P.X., V.C.P.X. OR A.C.P. CLASS 2400 UNLESS OTHERWISE NOTED.
- THE CONTRACTOR SHALL PROVIDE A JOINT IN ALL SEWER MAINS WITHIN 2'-0" OF EXTERIOR MANHOLE WALLS.
- ALL MANHOLES SHALL BE 4'-0" INSIDE DIAMETER.



NOTE:
LOT LINES SHOWN HEREON OTHER THAN LOTS 1 TO 31, AND LOTS 125 TO 131 DO NOT EXIST AND ARE SHOWN FOR PURPOSE OF LOCATING WATER AND SEWER HOUSE CONNECTIONS.

PLAN Scale: 1" = 50'

RECORDED LOTS - WATER AND SEWER AVAILABLE



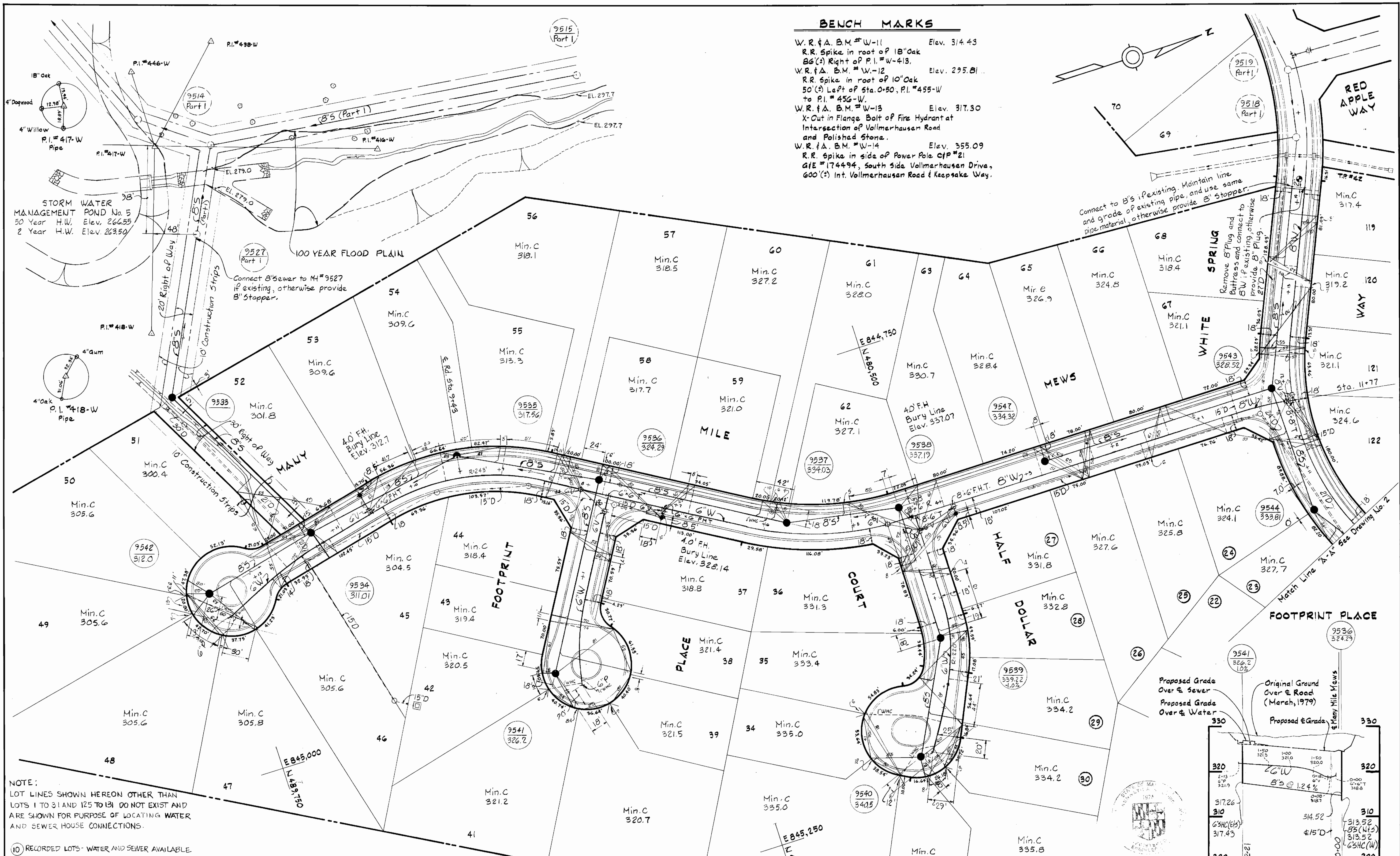
DEPARTMENT OF PUBLIC WORKS
HOWARD COUNTY, MARYLAND
James E. O'Leary 4/27/80
CHIEF-BUREAU OF UTILITIES - DATE
Whitman, Requardt & Associates
ENGINEERS
1304 ST. PAUL ST.
BALTIMORE, MARYLAND

DEPARTMENT OF PUBLIC WORKS
HOWARD COUNTY, MARYLAND
4-23-80
DATE
Larry F. Nemey
DIRECTOR OF PUBLIC WORKS

CONTRACT NO. 34-0897-D
PLAN, DETAIL & PROFILE OF
WATER & SEWER MAINS

COLUMBIA
VILLAGE OF KINGS CONTRIVANCE
ELECTION DISTRICT GUILFORD NO. 6

DRAWING NO. 2 OF 4
SCALE AS SHOWN
42,481,845
42,481,845



NOTE:
LOT LINES SHOWN HEREON OTHER THAN LOTS 1 TO 31 AND 125 TO 131 DO NOT EXIST AND ARE SHOWN FOR PURPOSE OF LOCATING WATER AND SEWER HOUSE CONNECTIONS.

DEPARTMENT OF PUBLIC WORKS
HOWARD COUNTY, MARYLAND
CHIEF-BUREAU OF UTILITIES—DATE
CHIEF-BUREAU OF ENGINEERING—DATE

WHITMAN, REQUARDT & ASSOCIATES
ENGINEERS
1304 ST. PAUL ST.
BALTIMORE, MARYLAND

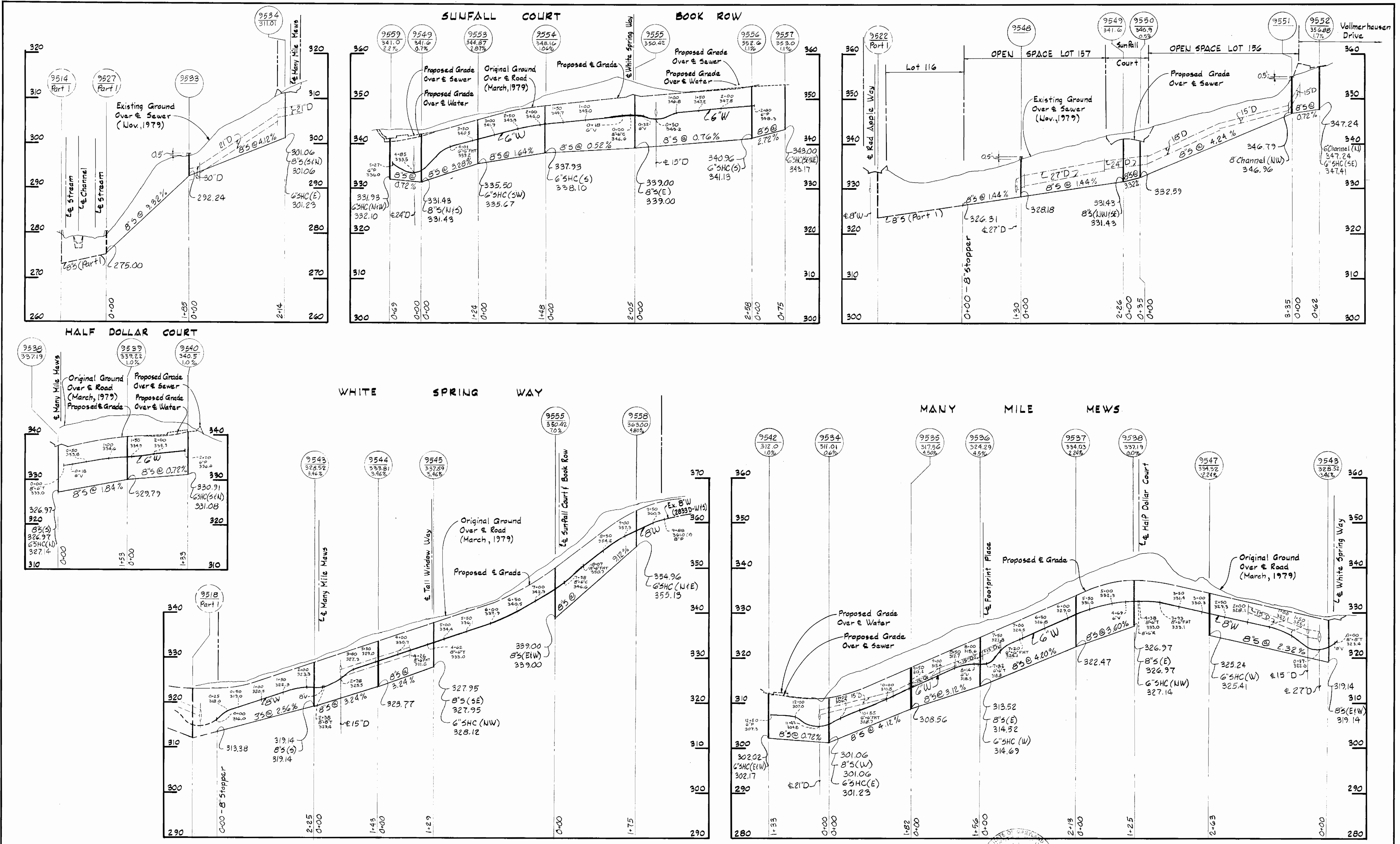
DEPARTMENT OF PUBLIC WORKS
HOWARD COUNTY, MARYLAND
DATE 4-23-80
DIRECTOR OF PUBLIC WORKS

CONTRACT NO. 34-0897-D

PLAN & PROFILE OF
WATER & SEWER MAINS

COLUMBIA
VILLAGE OF KINGS CONTRIVANCE
ELECTION DISTRICT GUILFORD NO. 6

DRAWING NO. 3 OF 4
SCALE AS SHOWN



<p>DEPARTMENT OF PUBLIC WORKS HOWARD COUNTY, MARYLAND CHIEF-BUREAU OF UTILITIES - DATE CHIEF-BUREAU OF ENGINEERING - DATE</p>	<p>DEPARTMENT OF PUBLIC WORKS HOWARD COUNTY, MARYLAND DATE 4-23-80 DIRECTOR OF PUBLIC WORKS</p>	<p>CONTRACT NO. 34-0897-D</p>	<p>PROFILES OF WATER & SEWER MAINS</p>	<p>COLUMBIA VILLAGE OF KINGS CONTRIVANCE ELECTION DISTRICT GUILFORD NO. 6</p>	<p>DRAWING NO. 4 OF 4</p>	<p>SCALE H: 1"=100' V: 1"=10'</p>
--	--	-------------------------------	---	---	---	---