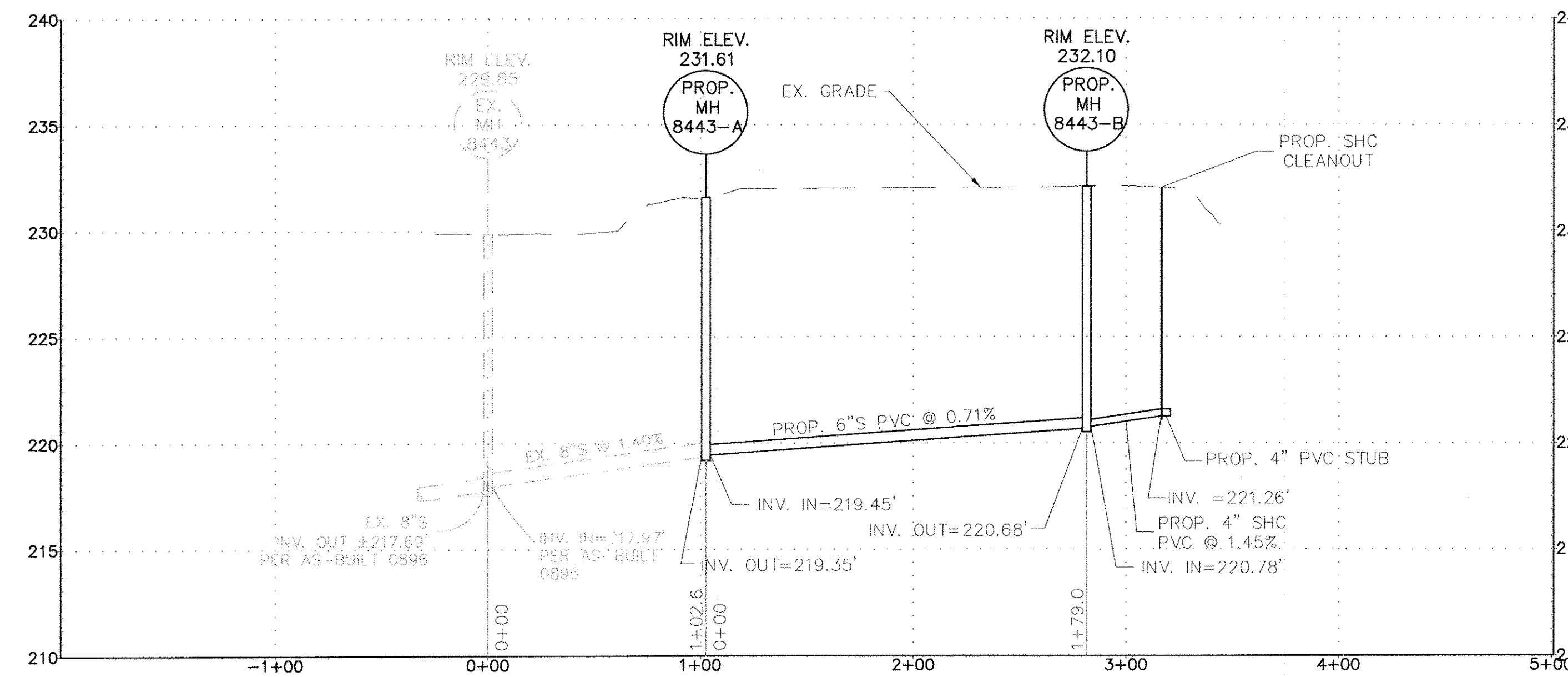


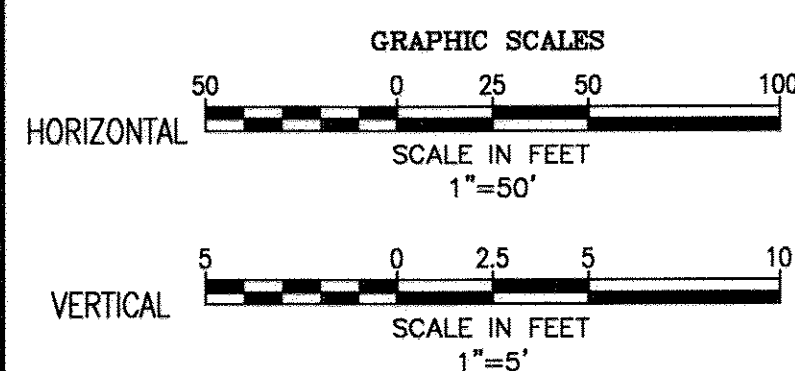
PLAN - 6" SEWER 7055 MONTGOMERY ROAD

SCALE: HORIZ. 1"=50'



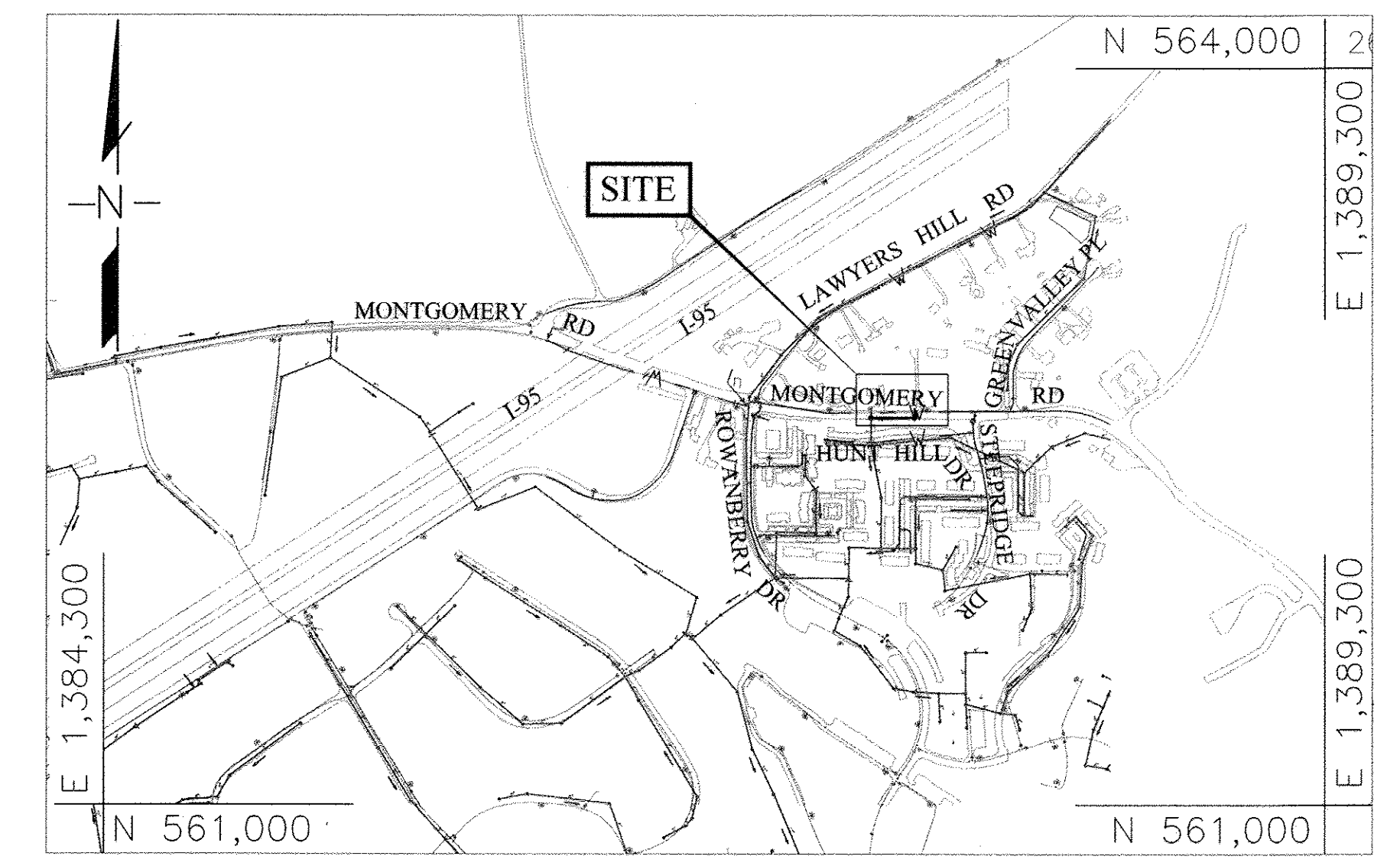
PROFILE - 6" SEWER 7055 MONTGOMERY ROAD

SCALE: HORIZ. 1"=50'
VERT. 1"=5'



SEWER MANHOLE SCHEDULE					
NO.	TYPE	LOCATION	RIM EL.	INV. IN	INV. OUT
SMH	EX. MANHOLE 8443	5847-35 HUNT HILL DRIVE	229.85	217.97	217.69
SMH	PROP. MANHOLE 8443-A	7049 MONTGOMERY ROAD	231.61	219.45	219.35
SMH	PROP. MANHOLE 8443-B	7055 MONTGOMERY ROAD	232.08	220.78	220.68

RECORD DRAWINGS
TO THE BEST OF OUR KNOWLEDGE AND BELIEF, BASED ON INFORMATION BY OTHERS, THESE RECORD DRAWINGS SUBSTANTIALLY REPRESENT THE PROJECTS AS CONSTRUCTED.
MICHAEL BAKER INTERNATIONAL
BY: *[Signature]* 5/22/18



LOCATION MAP
SCALE: 1"=600'

- GENERAL NOTES:**
- PART I
- APPROXIMATE LOCATIONS OF EXISTING MAINS ARE SHOWN. THE CONTRACTOR SHALL TAKE ALL NECESSARY PRECAUTIONS TO PROTECT EXISTING MAINS AND SERVICES AND MAINTAIN UNINTERRUPTED SERVICE. ANY DAMAGE INCURRED SHALL BE REPAIRED IMMEDIATELY TO THE SATISFACTION OF THE ENGINEER AT THE CONTRACTOR'S EXPENSE.
 - TOPOGRAPHIC INFORMATION TAKEN FROM HOWARD COUNTY GIS.
 - HORIZONTAL AND VERTICAL SURVEY CONTROLS:
THE COORDINATES SHOWN ON THE DRAWINGS ARE BASED ON MARYLAND STATE REFERENCE SYSTEM NAD '83/'91 AS PROJECTED BY HOWARD COUNTY GEODETIC CONTROL STATIONS:
0021, N 562745.797, E 1386542.119, ELEV. 226.200'
3844, N 562977.624, E 1386288.139, ELEV. 223.379'
ALL VERTICAL CONTROLS ARE BASED ON NAVD '88.
 - ALL PIPE ELEVATIONS SHOWN ARE INVERT ELEVATIONS UNLESS OTHERWISE NOTED ON THE PLANS.
 - CLEAR ALL UTILITIES BY A MINIMUM OF 12 INCHES. CLEAR ALL POLES BY 5'-0" MINIMUM OR TUNNEL AS REQUIRED UNLESS OTHERWISE NOTED. THE OWNER HAS CONTACTED THE UTILITY COMPANIES AND HAS MADE ARRANGEMENTS FOR BRACING OF POLES SHOWN ON THE DRAWINGS. IN THE EVENT THE CONTRACTOR'S WORK REQUIRES THE BRACING OF ADDITIONAL POLES, ANY COST INCURRED BY THE OWNER FOR THE BRACING OF ADDITIONAL POLES OR DAMAGES SHALL BE DEDUCTED FROM MONIES OWED TO THE CONTRACTOR. THE CONTRACTOR SHALL COORDINATE WITH THE UTILITY COMPANIES TO SCHEDULE THE BRACING OF THE POLES.
 - FOR DETAILS NOT SHOWN ON THE DRAWING, AND FOR MATERIALS AND CONSTRUCTION METHODS, USE HOWARD COUNTY DESIGN MANUAL, VOLUME IV, STANDARD SPECIFICATIONS AND DETAILS FOR CONSTRUCTION (LATEST EDITION). THE CONTRACTOR SHALL HAVE A COPY OF VOLUME IV ON THE JOB.
 - NO TEST PITS HAVE BEEN PERFORMED FOR THIS PROJECT. EXISTING UTILITIES IN THE VICINITY OF THE PROPOSED WORK FOR WHICH TEST PITS HAVE NOT BEEN DUG SHALL BE LOCATED BY THE CONTRACTOR TWO WEEKS IN ADVANCE OF CONSTRUCTION OPERATIONS AT HIS OWN EXPENSE.
 - THE CONTRACTOR SHALL NOTIFY THE FOLLOWING UTILITY COMPANIES OR AGENCIES AT LEAST FIVE WORKING DAYS BEFORE STARTING WORK SHOWN ON THESE PLANS:
- | | |
|------------------------------|----------------|
| AT&T | 1.800.252.1133 |
| BGE (CONSTRUCTION SERVICES) | 410.637.8713 |
| BGE (EMERGENCY) | 410.685.0123 |
| BUREAU OF UTILITIES | 410.313.4900 |
| COLONIAL PIPELINE COMPANY | 410.795.1390 |
| MSS UTILITY | 1.800.257.7777 |
| STATE HIGHWAY ADMINISTRATION | 410.531.5533 |
| VERIZON | 1.800.743.0033 |
| MCI WORLDCOM | 1.800.624.9675 |
- TREES AND SHRUBS ARE TO BE PROTECTED FROM DAMAGE TO THE MAXIMUM EXTENT. TREES AND SHRUBS LOCATED WITHIN THE CONSTRUCTION STRIP ARE NOT TO BE REMOVED OR DAMAGED BY THE CONTRACTOR.
 - THE CONTRACTOR SHALL REMOVE TREES, STUMPS, AND ROOTS ALONG THE LINE OF EXCAVATION. PAYMENT FOR SUCH REMOVAL SHALL BE INCLUDED IN THE UNIT PRICE BID FOR CONSTRUCTION OF THE SEWER.
 - THE CONTRACTOR SHALL NOTIFY THE BUREAU OF HIGHWAYS, HOWARD COUNTY, AT (410)-313-7450 AT LEAST FIVE WORKING DAYS BEFORE OPEN CUTTING OR BORING/JACKING OF ANY COUNTY ROAD FOR LAYING WATER/SEWER MAINS OR HOUSE CONNECTIONS. THE APPROVAL OF THESE DRAWINGS WILL CONSTITUTE COMPLIANCE WITH DPW REQUIREMENTS PER SECTION 18.114(A) OF THE HOWARD COUNTY CODE.

- PART III - SEWER
- ALL PROPOSED 8" SEWER MAINS SHALL BE DUCTILE IRON PIPE, THICKNESS CLASS 54, WITH RESTRAINED JOINTS USING MEGALUG, OR EQUAL, WEDGE ANCHORS, OR PIPE MANUFACTURER'S RESTRAINED JOINT PIPE. 4" SEWER SHC SHALL BE PVC, C900, UNLESS OTHERWISE NOTED.
 - ALL MANHOLES SHALL BE 4'-0" INSIDE DIAMETER UNLESS OTHERWISE NOTED.
 - FORCE MAINS SHALL BE D.I.P. ONLY.
 - MANHOLES SHOWN WITH 12" AND 16" WALLS ARE FOR BRICK MANHOLES ONLY.
 - MANHOLES DESIGNATED W.T. IN PLAN AND PROFILE SHALL HAVE WATER-TIGHT FRAME AND COVER, STANDARD DETAIL C-5.52, WHERE WATER-TIGHT MANHOLE FRAMES AND COVERS ARE USED, SET TOP OF FRAME 1'-6" ABOVE FINISHED GRADE UNLESS OTHERWISE NOTED ON THE DRAWINGS.
 - HOUSE(S) WITH THE SYMBOL "C.N.S." INDICATES THAT THE CELLAR CANNOT BE SERVED.
- SEQUENCE OF CONSTRUCTION
- A PRE-CONSTRUCTION MEETING MUST OCCUR WITH THE HOWARD COUNTY DEPARTMENT OF PUBLIC WORKS, CONSTRUCTION INSPECTION DIVISION (CID), 410-313-1855 AFTER THE FUTURE LOD AND PROTECTED AREAS ARE MARKED CLEARLY IN THE FIELD.
 - ALL VEGETATIVE AND STRUCTURAL PRACTICES ARE TO BE INSTALLED ACCORDING TO THE PROVISIONS OF THE EROSION AND SEDIMENT CONTROL PLAN AND ARE TO BE IN CONFORMANCE WITH THE 2011 MARYLAND STANDARDS AND SPECIFICATIONS FOR SOIL EROSION AND SEDIMENT CONTROL, AND REVISIONS THERETO.
 - WITHOUT DISRUPTING FLOW FROM THE EXISTING SEWER, CONSTRUCT DOGHOUSE MH 8443-A AND NEW SEWER. CONSTRUCT NEW SEWER FROM MH 8443-A TO MH 8443-B.
 - TEST NEW SEWER.
 - INSTALL 4" SHC FOR 7055 MONTGOMERY ROAD.
 - RESTORE AND STABILIZE AREAS DISTURBED BY THE WORK.
 - REMOVE EROSION AND SEDIMENT CONTROLS.

AS-BUILT

DEPARTMENT OF PUBLIC WORKS
HOWARD COUNTY, MARYLAND

[Signature] 6/14/18
DATE: 6/14/18
CHIEF, BUREAU OF UTILITIES

[Signature] 6/14/18
DATE: 6/14/18
CHIEF, UTILITY DESIGN DIVISION

MICHAEL BAKER INTERNATIONAL, INC.
1304 Concourse Drive, Suite 200
Linthicum, MD 21086-1014
Phone: (410) 889-3400

EVAN R. ANDREWS, P.E.
DESIGN: MJ
DRAWN: MJ
CHECKED: ERA
DATE: 2/28/2018

DESIGN	NO.	AS-BUILT DRAWING	DATE	BY
DESIGN: MJ	1	AS-BUILT DRAWING	5/18/2018	
DRAWN: MJ				
CHECKED: ERA				
DATE: 2/28/2018	NO.	REVISION	DATE	BY

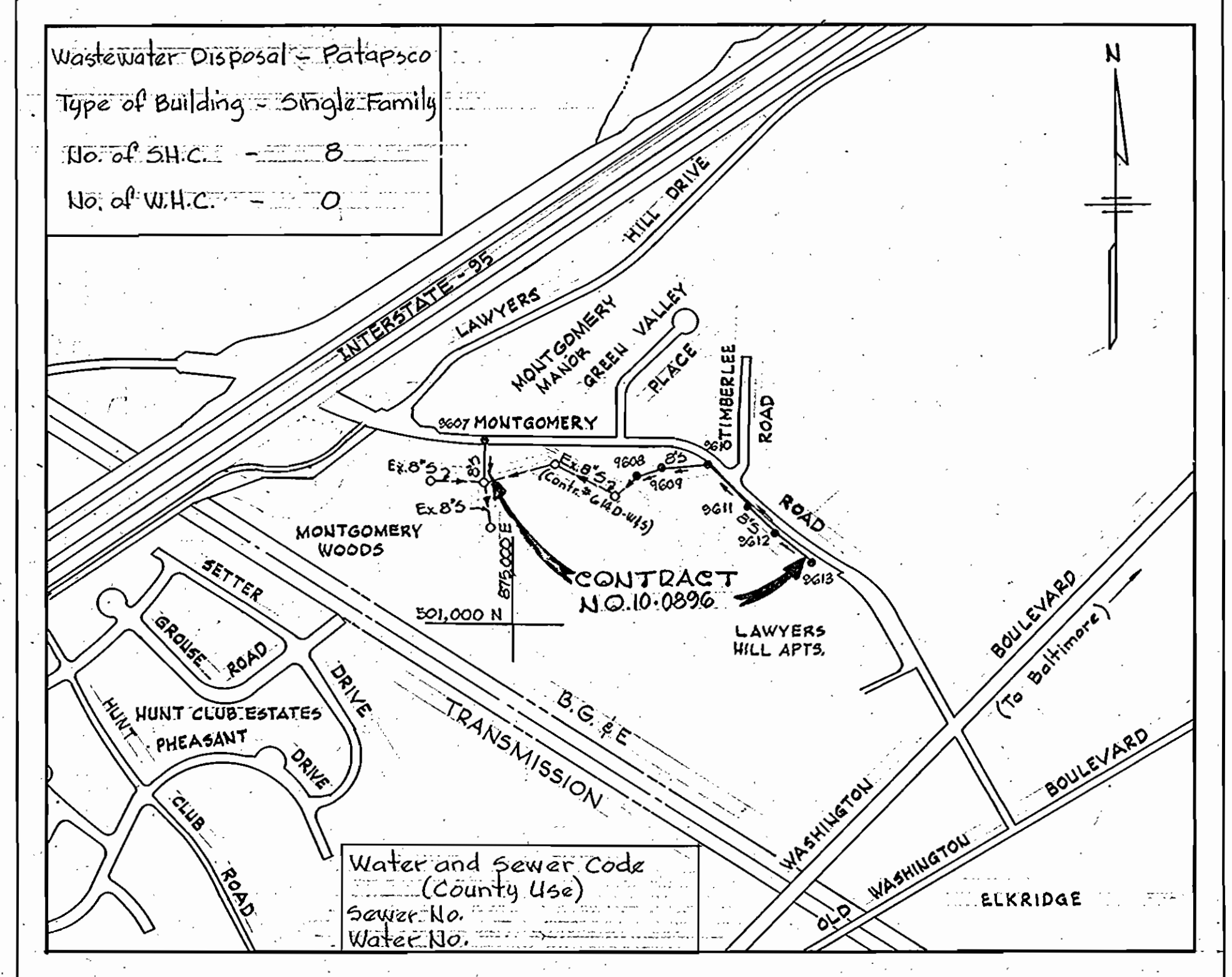
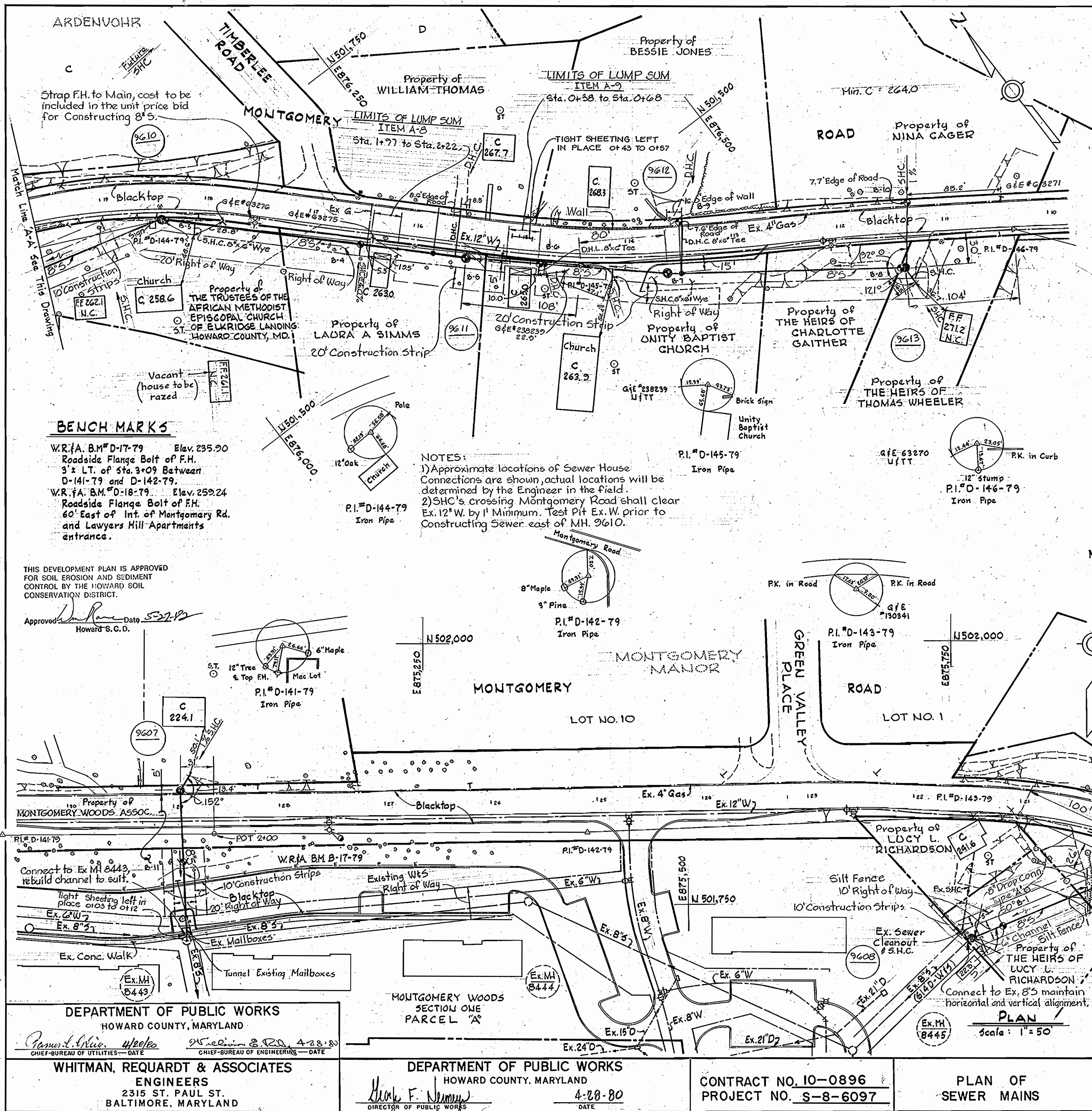
600 SCALE MAP NO. _____
BLOCK NO. _____

PROP. 6" SEWER
PLAN & PROFILE

MONTGOMERY ROAD SEWER
CAPITAL PROJECT NO.: S-8-6097
CONTRACT NO.: 10-0896
1ST ELECTION DISTRICT, HOWARD COUNTY, MD

SCALE
AS SHOWN

SHEET
1A OF 4



BENCH MARKS

W.R. f.A. B.M. #D-17-79 Elev. 235.90
Roadside Flange Bolt of F.H.
3' ± LT. of Sta. 3+09 Between
D-141-79 and D-142-79.

W.R. f.A. B.M. #D-18-79 Elev. 259.24
Roadside Flange Bolt of F.H.
60' East of Int. of Montgomery Rd.
and Lawyers Hill Apartments
entrance.

NOTES:

1) Approximate locations of Sewer House Connections are shown, actual locations will be determined by the Engineer in the field.

2) SHC's crossing Montgomery Road shall clear Ex. 12" W. by 1' Minimum. Test Pit Ex. W. prior to Constructing Sewer east of MH 9610.

VICINITY MAP
Scale: 1" = 600'

GENERAL NOTES

- APPROXIMATE LOCATION OF EXISTING MAINS ARE SHOWN. THE CONTRACTOR SHALL TAKE ALL NECESSARY PRECAUTIONS TO PROTECT EXISTING MAINS AND SERVICES AND MAINTAIN UNINTERRUPTED SUPPLY. ANY DAMAGE INCURRED SHALL BE REPAIRED IMMEDIATELY.
- ALL PIPE ELEVATIONS SHOWN ARE INVERT ELEVATIONS.
- THE CONTRACTOR SHALL LOCATE EXISTING UTILITIES A MINIMUM OF TWO WEEKS IN ADVANCE OF CONSTRUCTION OPERATIONS IN VICINITY OF UTILITIES.
- THE CONTRACTOR SHALL NOTIFY THE FOLLOWING UTILITIES OR AGENCIES AT LEAST FIVE DAYS BEFORE STARTING WORK SHOWN ON THESE PLANS:
BALTIMORE GAS AND ELECTRIC COMPANY - UNDERGROUND ELECTRIC DISTRIBUTION ENGINEERING DAMAGE CONTROL 234-5691
UNDERGROUND GAS DISTRIBUTION ENGINEERING 234-5621
CHESAPEAKE AND POTOMAC TELEPHONE COMPANY 393-3648.
MISS UTILITY - 1 - 559-0100. BUREAU OF UTILITIES HOWARD COUNTY 299-2566.
- ALL HORIZONTAL CONTROLS ARE BASED ON MARYLAND STATE COORDINATES.
- ALL VERTICAL CONTROLS ARE BASED ON USGS DATUM.
- CLEAR ALL UTILITIES BY A MINIMUM OF 6". CLEAR ALL POLES BY 2' OR TUNNEL AS REQUIRED.
- ALL SEWER MAINS SHALL BE C.S.P.X., V.C.P.X., A.C.P. CLASS 2400 OR P.V.C. UNLESS OTHERWISE NOTED.
- ALL MANHOLES SHALL BE 4'-0" INSIDE DIAMETER.
- THE CONTRACTOR SHALL PROVIDE A JOINT IN ALL SEWER MAINS WITH 2'-0" OF EXTERIOR MANHOLE WALLS.
- MANHOLES SHOWN WITH 12" WALLS ARE FOR BRICK MANHOLES ONLY.
- TREES ARE TO BE PROTECTED FROM DAMAGE TO MAXIMUM EXTENT. TREES LOCATED WITHIN THE CONSTRUCTION STRIP ARE NOT TO BE REMOVED OR DAMAGED BY THE CONTRACTOR.
- FOR DETAILS NOT SHOWN ON THE DRAWINGS, USE HOWARD COUNTY STANDARD DETAILS.
- FOR MATERIAL AND CONSTRUCTION REQUIREMENTS, USE HOWARD COUNTY STANDARD SPECIFICATIONS.

QUANTITIES

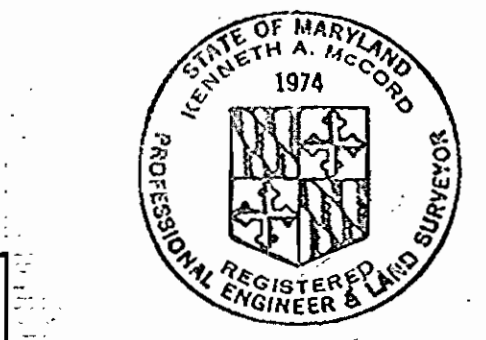
ITEM	BID	AS-BUILT MATERIAL/SUPPLIER
8" Sewer	1150 L.F.	1160 L.F. P.V.C.
Manholes	7 each	7 each Precast/Terre Hill

Sediment Control Measures for this Contract will be implemented in accordance with Article 15 of the Standard Specifications

REVIEWED FOR HOWARD SOIL CONSERVATION DISTRICT AND MEETS TECHNICAL REQUIREMENT

Signature: *[Signature]* DATE: 5-27-82

U.S. SOIL CONSERVATION DISTRICT Service



Montgomery Road Sewer
Project No. S-8-6097
Contract No. 10-0896

DEPARTMENT OF PUBLIC WORKS
HOWARD COUNTY, MARYLAND

James H. Wiles
CHIEF BUREAU OF UTILITIES - DATE

W. F. Neuman
CHIEF BUREAU OF ENGINEERING - DATE

WHITMAN, REQUARDT & ASSOCIATES
ENGINEERS
2315 ST. PAUL ST.
BALTIMORE, MARYLAND

DEPARTMENT OF PUBLIC WORKS
HOWARD COUNTY, MARYLAND

W. F. Neuman
DIRECTOR OF PUBLIC WORKS

4-28-80
DATE

CONTRACT NO. 10-0896
PROJECT NO. S-8-6097

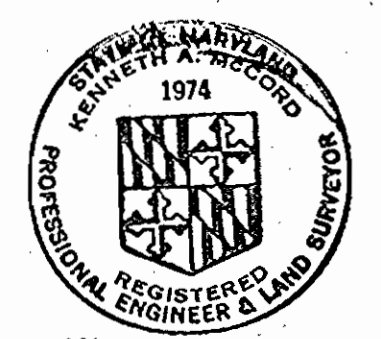
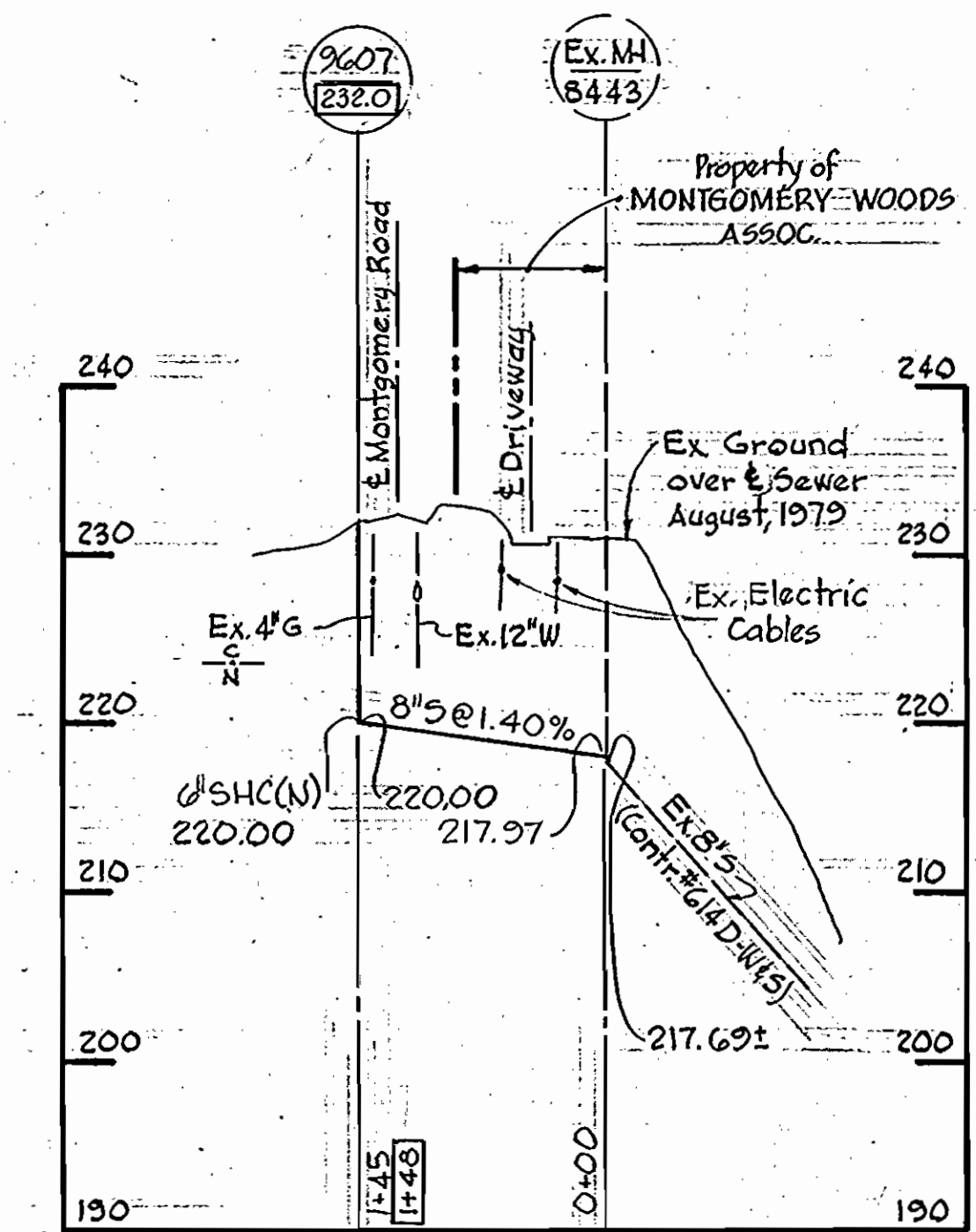
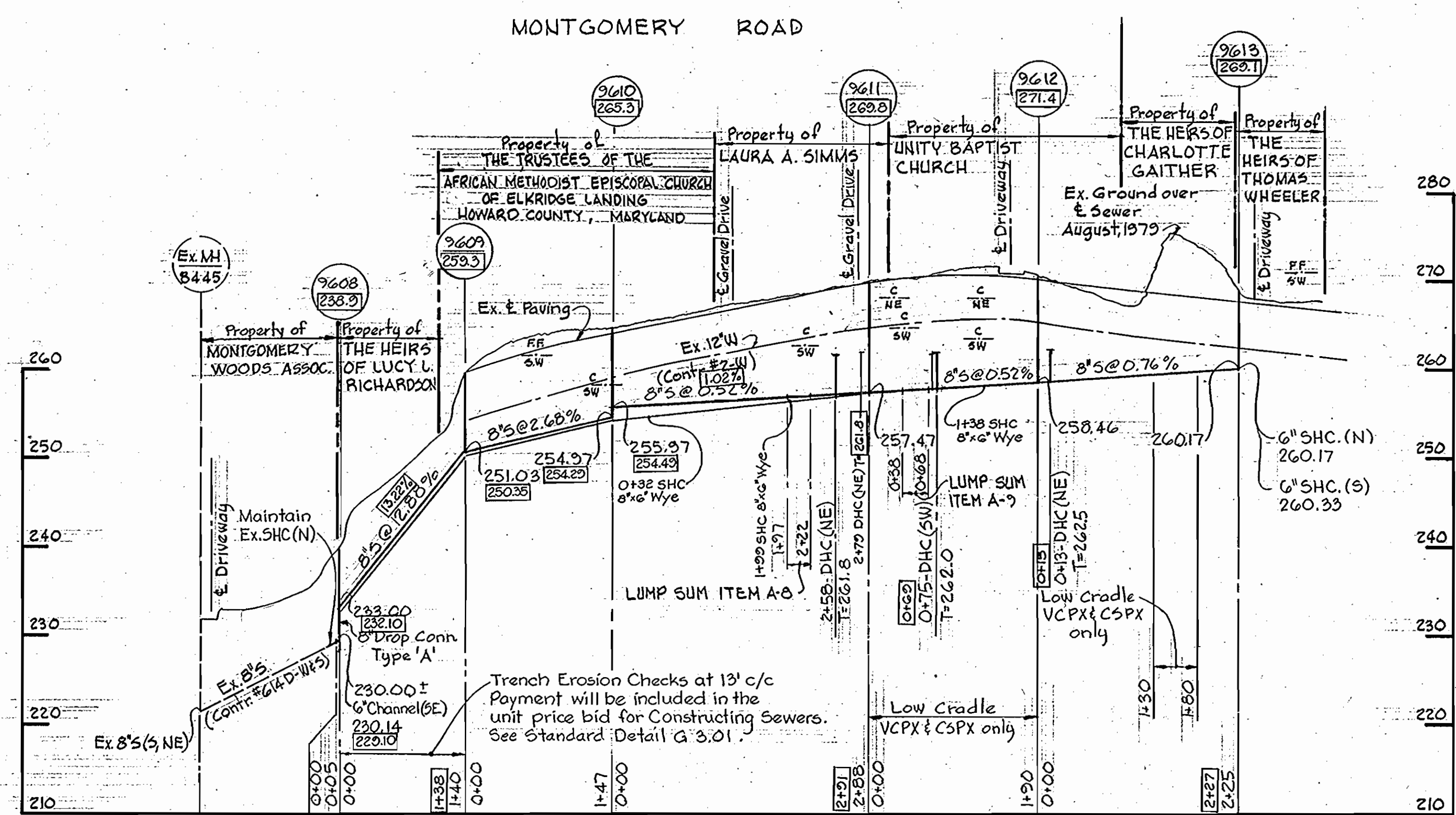
PLAN OF
SEWER MAINS

Scale: 1" = 50'

ELECTION DISTRICT
ELKRIDGE NO. 1

DRAWING NO.	SCALE
NO. 1 OF 2	AS SHOWN

WS 896-511



Kenneth M. Melrod

Montgomery Road Sewer
 Project No. 5-8-6097
 Contract No. 10-0896

DEPARTMENT OF PUBLIC WORKS
 HOWARD COUNTY, MARYLAND

James L. Glis 4/28/80
 CHIEF-BUREAU OF UTILITIES - DATE

Nicolas S. Roman 4-28-80
 CHIEF-BUREAU OF ENGINEERING - DATE

WHITMAN, REQUARDT & ASSOCIATES
 ENGINEERS
 2315 ST. PAUL ST.
 BALTIMORE, MARYLAND

DEPARTMENT OF PUBLIC WORKS
 HOWARD COUNTY, MARYLAND

Neely F. Nummy
 DIRECTOR OF PUBLIC WORKS

4-28-80
 DATE

CONTRACT NO. 10-0896
 PROJECT NO. 5-8-6097

PROFILE OF
 SEWER MAIN

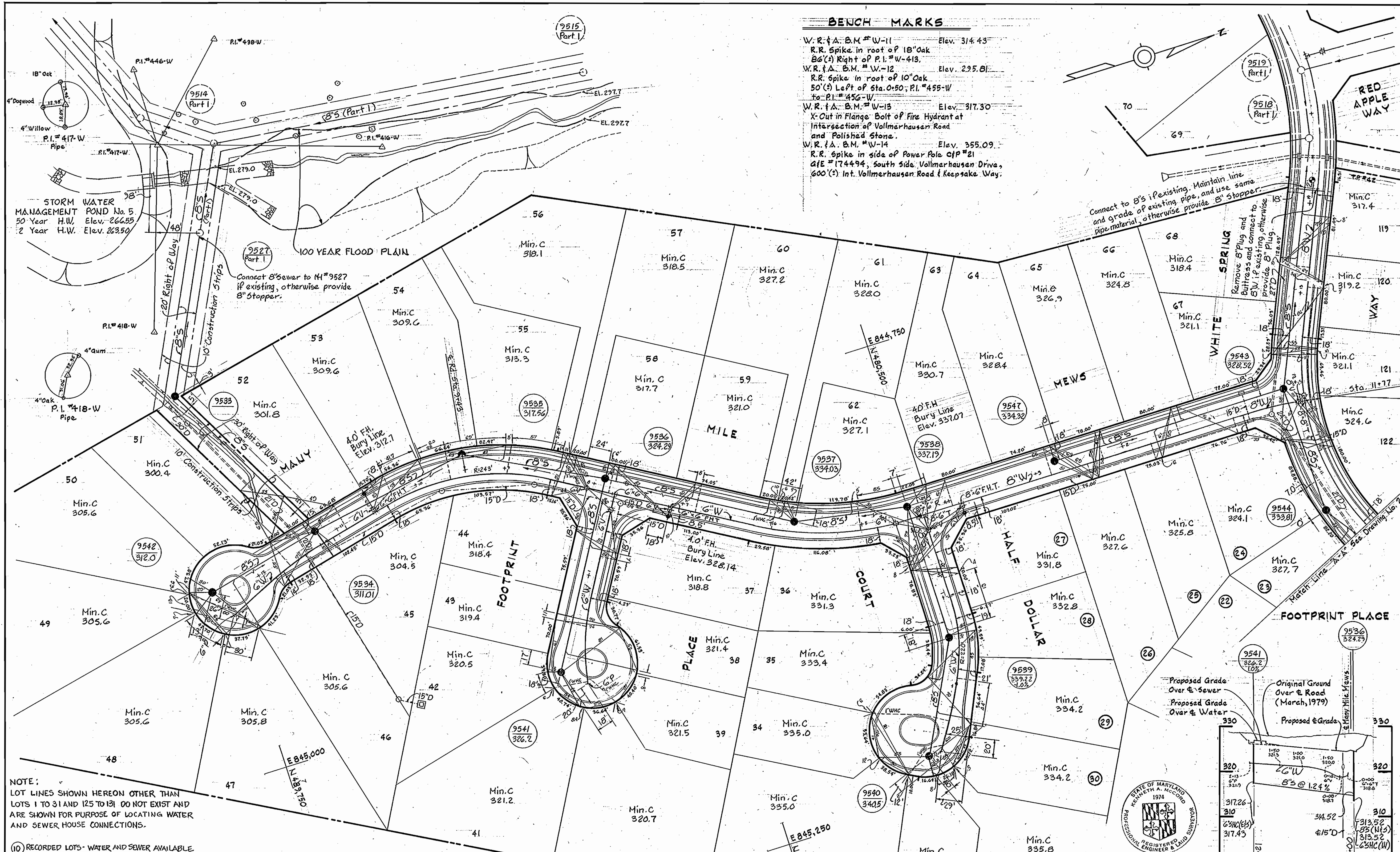
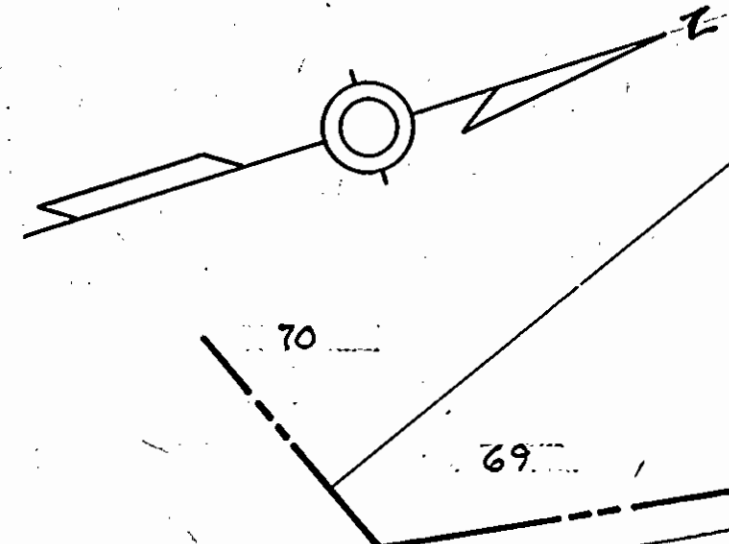
ELECTION DISTRICT
 ELKRIDGE NO. 1

DRAWING NO. 2	SCALE H: 1"=100'
OF 2	V: 1"=10'

WS 896-S/2

BENCH MARKS

W.R. & A. B.M. # W-11 Elev. 314.43
 R.R. Spike in root of 18" Oak
 86' (3) Right of P.I. # W-413.
 W.R. & A. B.M. # W-12 Elev. 295.81
 R.R. Spike in root of 10" Oak
 50' (2) Left of Sta. 0+50; P.I. # 455-W
 to P.I. # 456-W
 W.R. & A. B.M. # W-13 Elev. 317.30
 X-Cut in Flange Bolt of Fire Hydrant at
 Intersection of Vollmerhausen Road
 and Polishad Stone.
 W.R. & A. B.M. # W-14 Elev. 355.09
 R.R. Spike in side of Power Pole C/P # 21
 G/E # 174494, South Side Vollmerhausen Drive,
 600' (2) Int. Vollmerhausen Road & Keepsake Way.



NOTE:
 LOT LINES SHOWN HEREON OTHER THAN
 LOTS 1 TO 31 AND 125 TO 131 DO NOT EXIST AND
 ARE SHOWN FOR PURPOSE OF LOCATING WATER
 AND SEWER HOUSE CONNECTIONS.

(10) RECORDED LOTS - WATER AND SEWER AVAILABLE

DEPARTMENT OF PUBLIC WORKS
 HOWARD COUNTY, MARYLAND
 James L. Oles, 4/22/80
 CHIEF-BUREAU OF UTILITIES - DATE
 George F. Neumy, 4-23-80
 CHIEF-BUREAU OF ENGINEERING - DATE

WHITMAN, REQUARDT & ASSOCIATES
 ENGINEERS
 1304 ST. PAUL ST.
 BALTIMORE, MARYLAND

DEPARTMENT OF PUBLIC WORKS
 HOWARD COUNTY, MARYLAND
 4-23-80
 DATE
 George F. Neumy
 DIRECTOR OF PUBLIC WORKS

CONTRACT NO. 34-0897-D

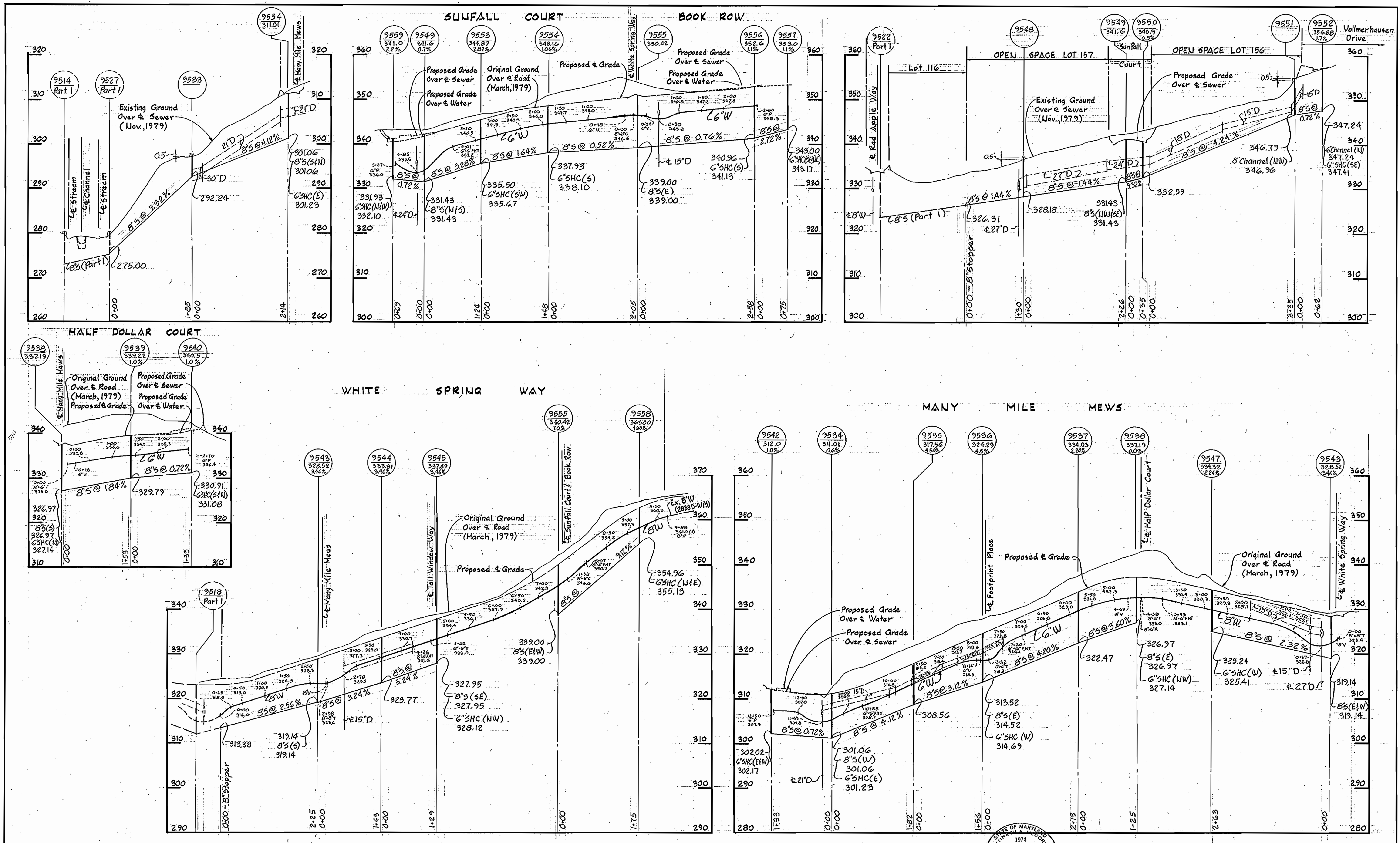
PLAN & PROFILE OF
 WATER & SEWER MAINS

COLUMBIA
 VILLAGE OF KINGS CONTRIVANCE
 ELECTION DISTRICT GUILFORD NO. 6

DRAWING NO. 3
 OF 4
 SCALE AS SHOWN

42,479,845
 42,480,845

WS 897-WS/3



WS 897-WS/4

DEPARTMENT OF PUBLIC WORKS
 HOWARD COUNTY, MARYLAND
 James L. Glick, 4/22/80
 CHIEF-BUREAU OF UTILITIES—DATE
 Whitman, Requardt & Associates
 ENGINEERS
 1304 ST. PAUL ST.
 BALTIMORE, MARYLAND

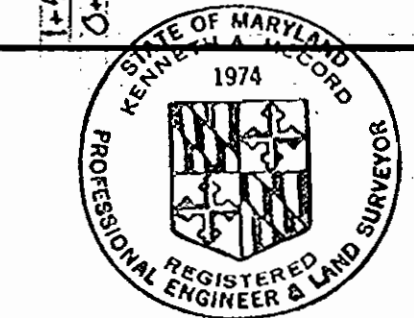
DEPARTMENT OF PUBLIC WORKS
 HOWARD COUNTY, MARYLAND
 4-23-80
 DATE
 George F. Newman
 DIRECTOR OF PUBLIC WORKS

CONTRACT NO. 34-0897-D

PROFILES OF
 WATER & SEWER MAINS

COLUMBIA
 VILLAGE OF KINGS CONTRIVANCE
 ELECTION DISTRICT GUILFORD NO. 6

DRAWING NO. 4 OF 4
 SCALE H: 1"=100'
 V: 1"=10'
 APRIL 7, 1980



Handwritten signature of the engineer.

Village of Kings Contrivance
 Section 3, Area 2, Phase II, Part 2
 Contract No. 34-0897-D