

SEDIMENT CONTROL MEASURES FOR THIS CONTRACT WILL BE IMPLEMENTED IN ACCORDANCE WITH SECTION 14 OF THE SPECIFICATIONS.

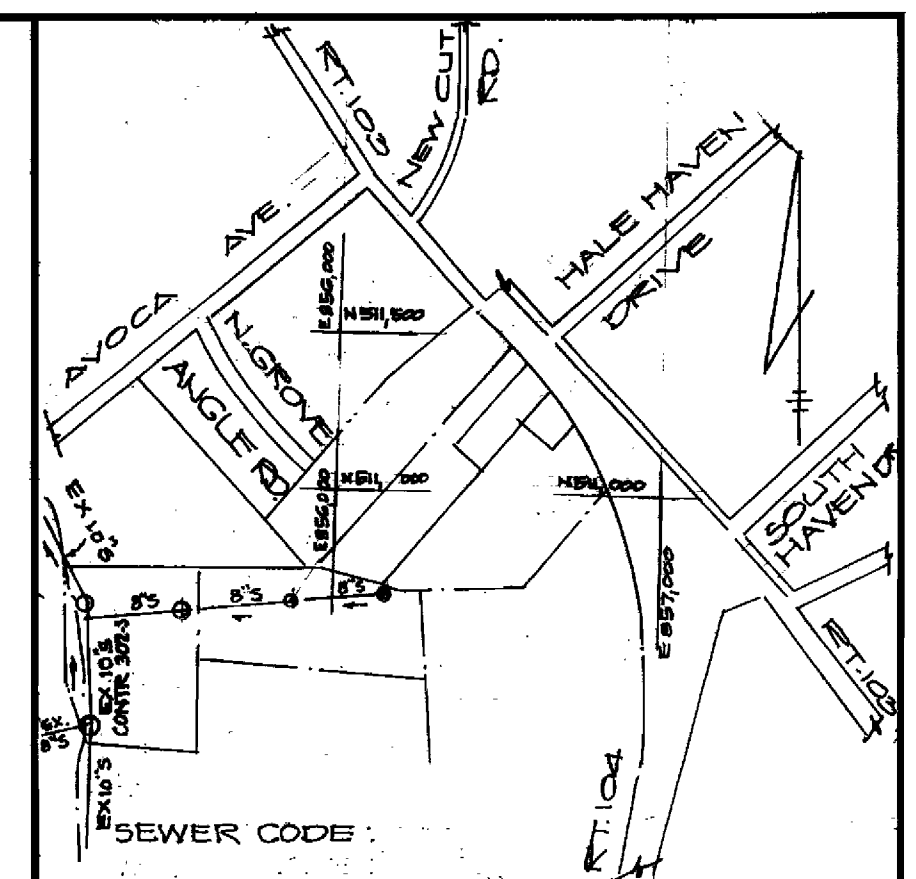
REVIEWED FOR HOWARD SOIL CONSERVATION DISTRICT AND MEETS TECHNICAL REQUIREMENTS.

James M. Helms 4/21/80
SIGNATURE DATE

U.S. SOIL CONSERVATION SERVICE
THIS DEVELOPMENT PLAN IS APPROVED FOR SOIL EROSION AND SEDIMENT CONTROL BY THE HOWARD SOIL CONSERVATION DISTRICT.

APPROVED:
William J. Rowe 4/21/80
HOWARD S.C.D. DATE

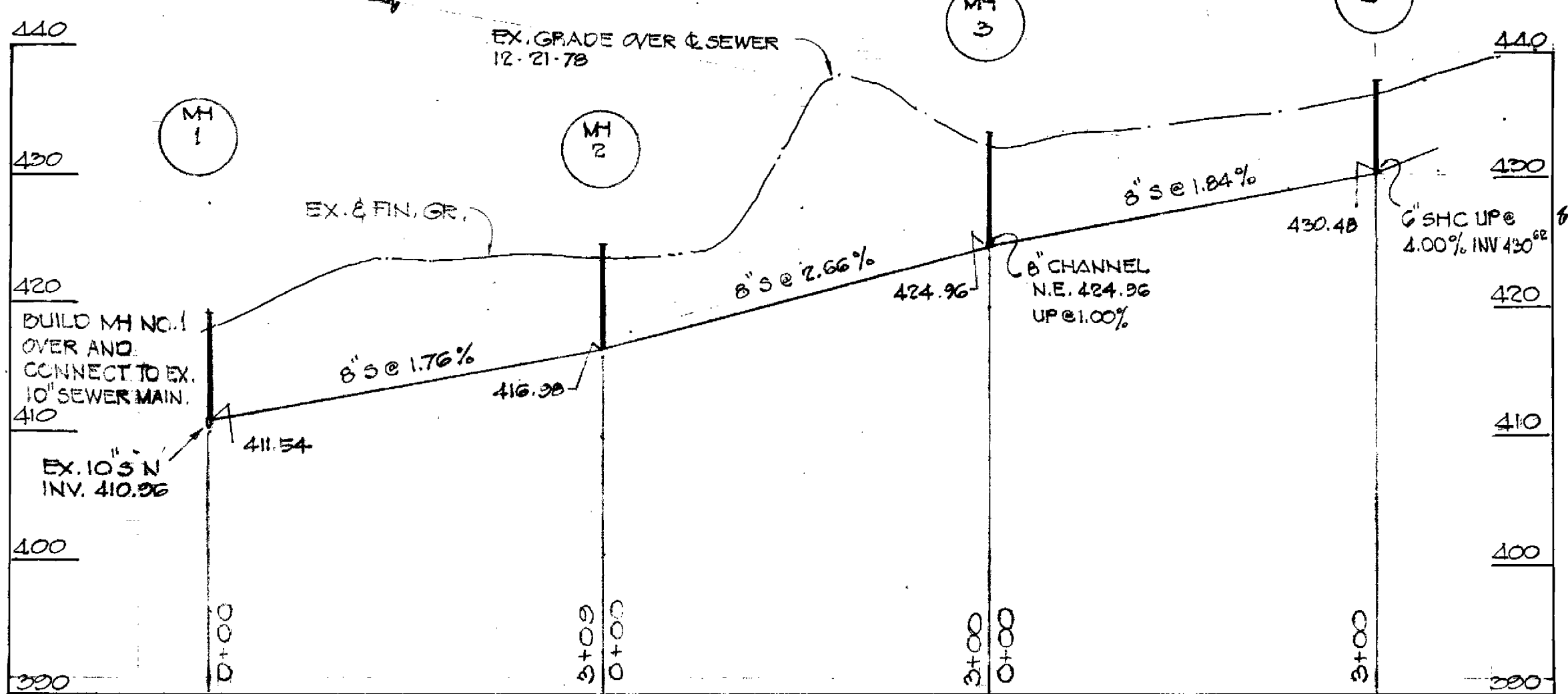
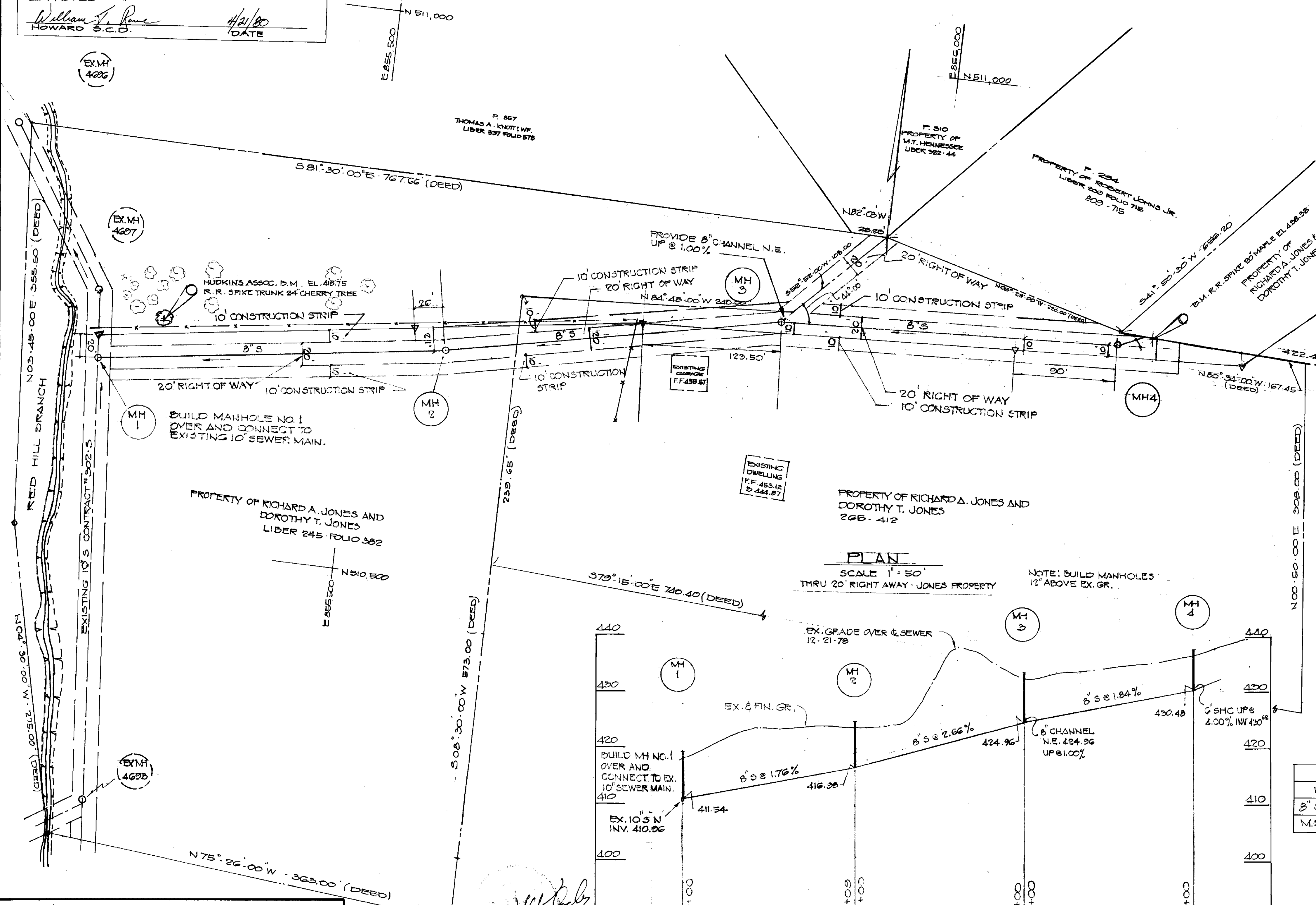
TYPE OF BUILDING COMMERCIAL
NUMBER LOTS 1
NUMBER OF SEWER HOUSE CONNECTIONS 1
DRAINAGE AREA _____



VICINITY MAP
SCALE 1" = 600'

GENERAL NOTES

- Approximate locations of existing utilities are shown. The contractor shall take all necessary precautions to protect the existing utilities and to maintain uninterrupted service. Any damage incurred due to the contractor's operations shall be repaired immediately at the contractor's expense.
- All pipe elevations shown are invert elevations.
- The contractor shall notify "Miss Utility" (559-0100) at least three (3) days prior to beginning any construction shown hereon.
- See standard details bound in specifications.
- Clear all utilities by a minimum of 6' clear all utility poles by 2'-0" minimum or tunnel as required. Any cost incurred to the contractor for tunneling or bracing poles shall be included in the unit price bid for excavation.
- The contractor shall provide a pipe joint in all sewer mains within 2'-0" of exterior manhole walls.
- All manholes shall be 4'-0" inside diameter unless otherwise noted.
- All horizontal and vertical controls are based on the Maryland State Grid System.
- All sewer mains shall be CSDPX VCPX or ACP Class 2400 unless otherwise noted.
- Trees are to be protected from damage to maximum extent. Trees located within the construction strip are not to be removed or damaged by the contractor.
- Contractor shall remove trees stumps and rocks along line of excavation as directed by the Engineer. Payment for such removal shall be included in the unit price bid for excavation and backfill for sewer mains.
- Place regulation "Men Working" and warning signs as required to comply with Maryland State Highway Administration Manual or Traffic Control for Highway Construction and Maintenance Operations.
- BENCH MARKS:
HUDKINS ASSOC. D.M.
DESCRIPTION: R.R. SPIKE SET 20' TWIN MAPLE, EL. 420.38 80' WEST, 20' NORTH TRAVERSE.
PT. A.G.
HUDKINS ASSOC. D.M.
DESCRIPTION: R.R. SPIKE SET 24' CHERRY TREE EL. 418.75 60' EAST, 15' NORTH TRAVERSE
PT. A.B.



QUANTITIES			
ITEM	ESTM'D.	AS-BUILT	MATERIAL/SUPPLIER
8" SEWER	309 L.F.		
MANHOLE	33 V.F.		

RETAIL AND OFFICE BUILDING ROUTE 103 AND 104
RICHARD JONES PROPERTY.
CONTRACT NO. 2891-D-S

DEPARTMENT OF PUBLIC WORKS
HOWARD COUNTY, MARYLAND
James M. Helms 4/21/80
CHIEF BUREAU OF UTILITIES DATE CHIEF BUREAU OF ENGINEERING DATE

HUDKINS ASSOCIATES, INC.
ENGINEERS
JOSEPH SQUARE
COLUMBIA, MARYLAND

DEPARTMENT OF PUBLIC WORKS
HOWARD COUNTY, MARYLAND
Henry F. Neuman 4-28-80
DIRECTOR OF PUBLIC WORKS DATE

CONTRACT NO. 2891-D-S

PLAN AND PROFILE OF SEWER MAINS

ELECTION DISTRICT
ELLCOTT CITY NO. 2

DRAWING NO. <u>1</u> OF <u>1</u>	SCALE AS SHOWN
----------------------------------	----------------