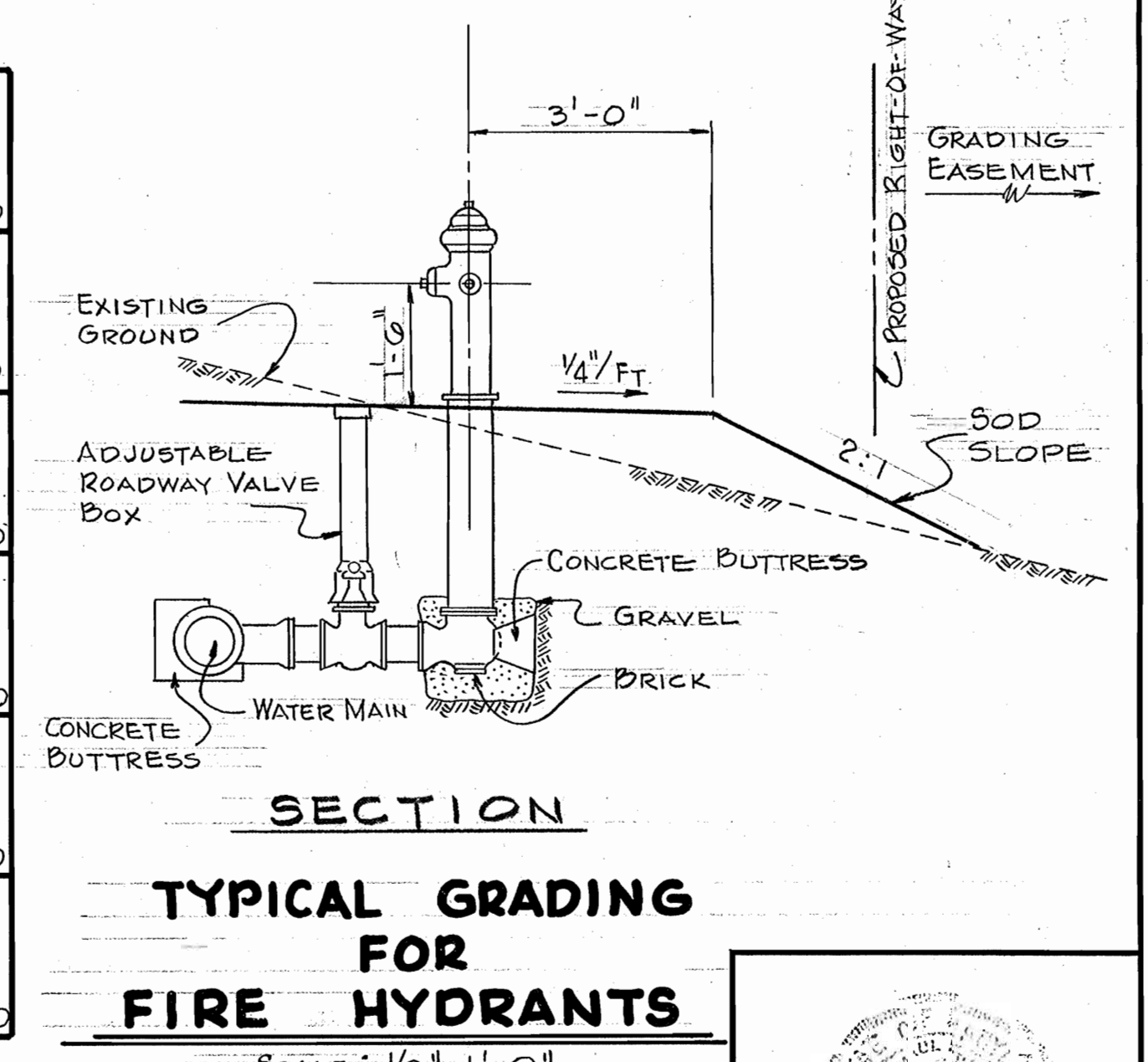
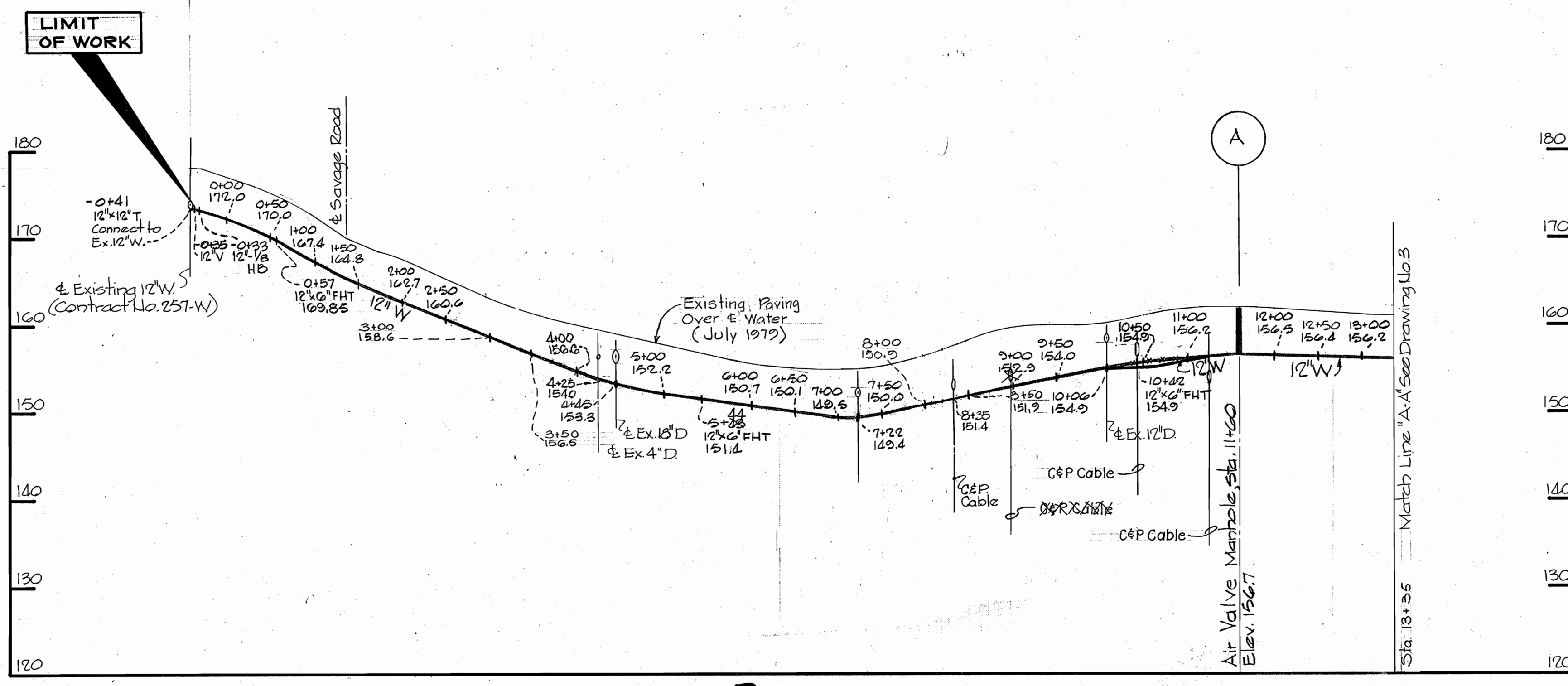
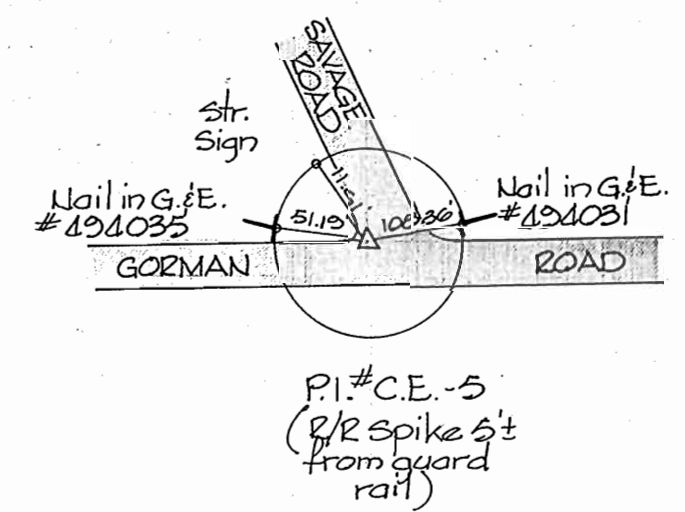
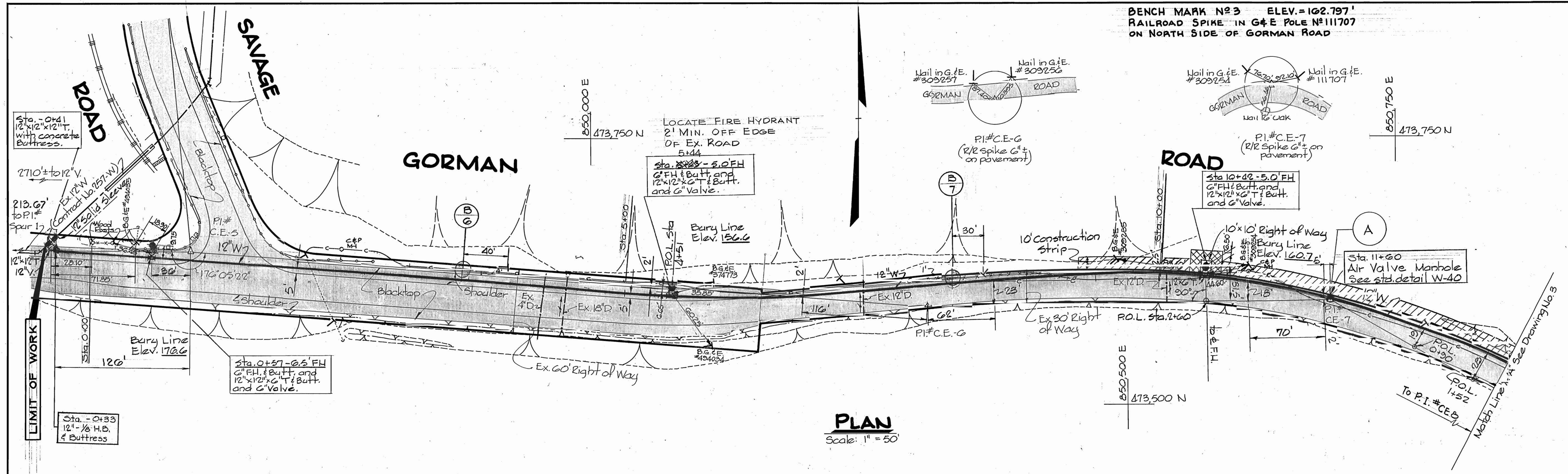


BENCH MARK NO. 3 ELEV. = 102.797'
RAILROAD SPIKE IN G+E POLE NO. 1111707
ON NORTH SIDE OF GORMAN ROAD



TYPE OF BUILDINGS	N/A
NUMBER OF LOTS	N/A
NUMBER OF WHC	0
NUMBER OF SHC	N/A
DRAINAGE AREA	SAVAGE W/TP

DEPARTMENT OF PUBLIC WORKS
HOWARD COUNTY, MARYLAND
James F. ... 2-19-80
CHIEF - BUREAU OF UTILITIES DATE

CENTURY ENGINEERING, INC.
CONSULTING ENGINEERS - PLANNERS
TOWSON, MARYLAND 21204

DEPARTMENT OF PUBLIC WORKS
HOWARD COUNTY, MARYLAND
... 2-8-80
DIRECTOR OF PUBLIC WORKS DATE CHIEF - BUREAU OF ENGINEERING DATE

CONTRACT No. 888-W
CAPITAL PROJECT W-7-8093

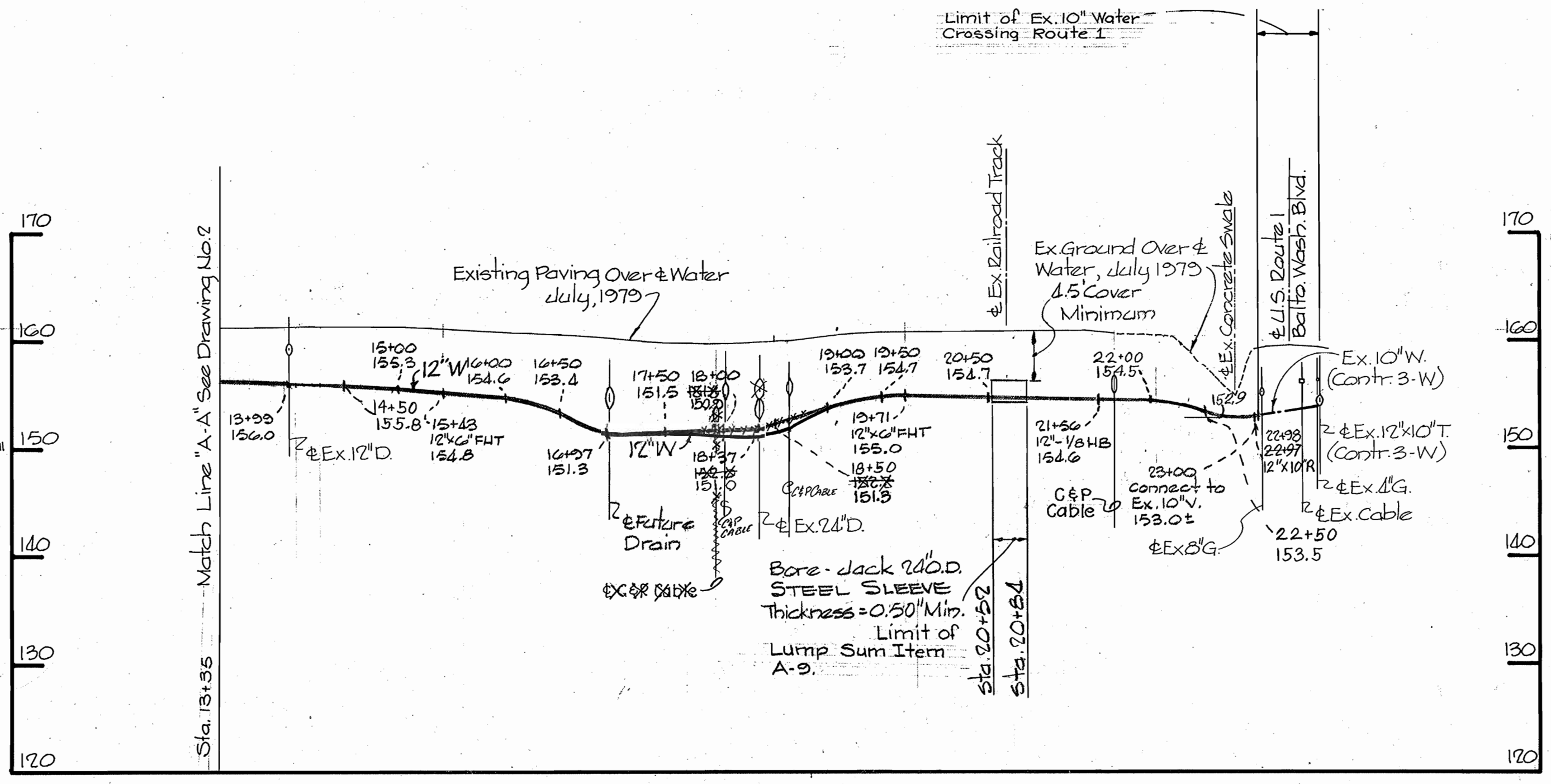
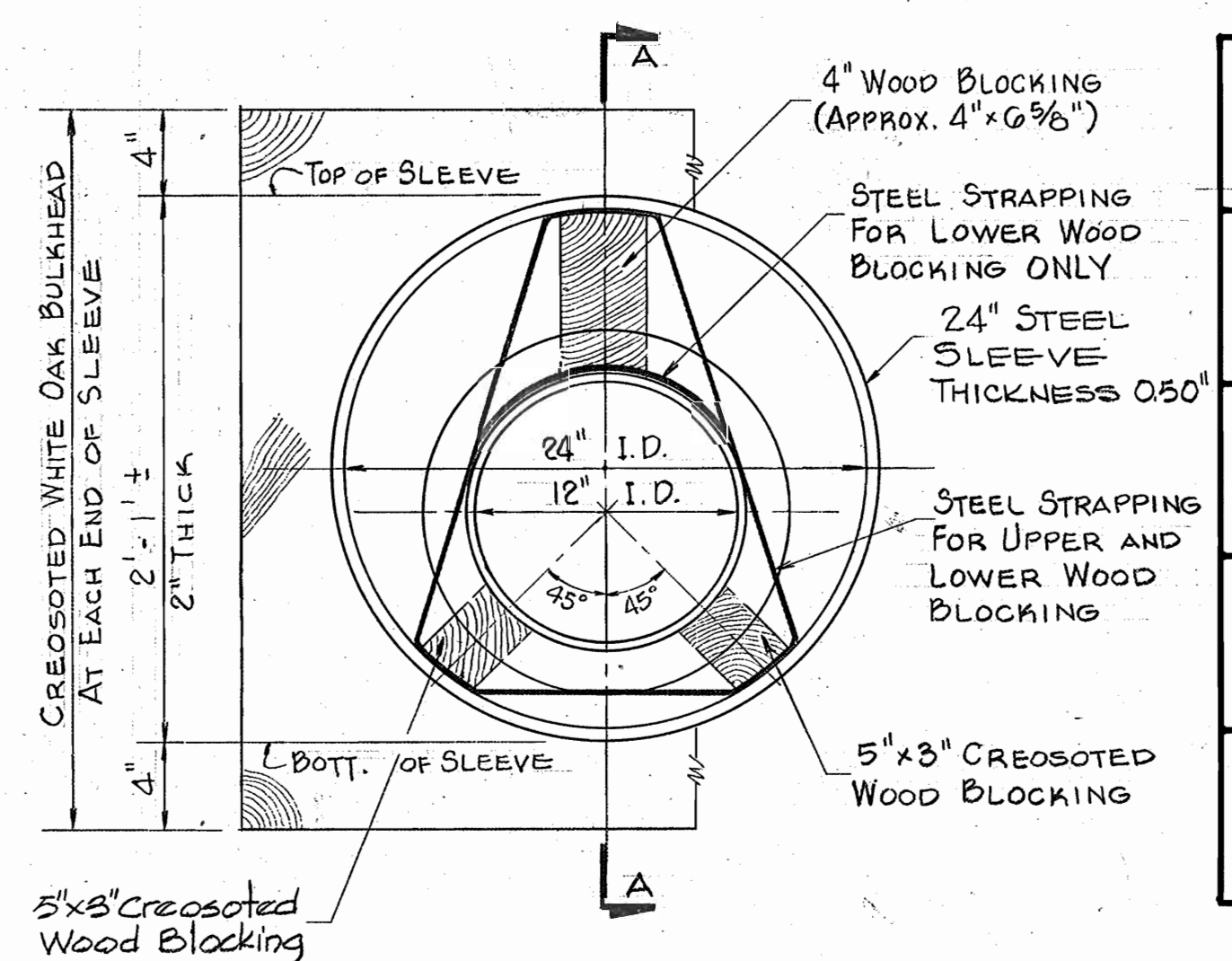
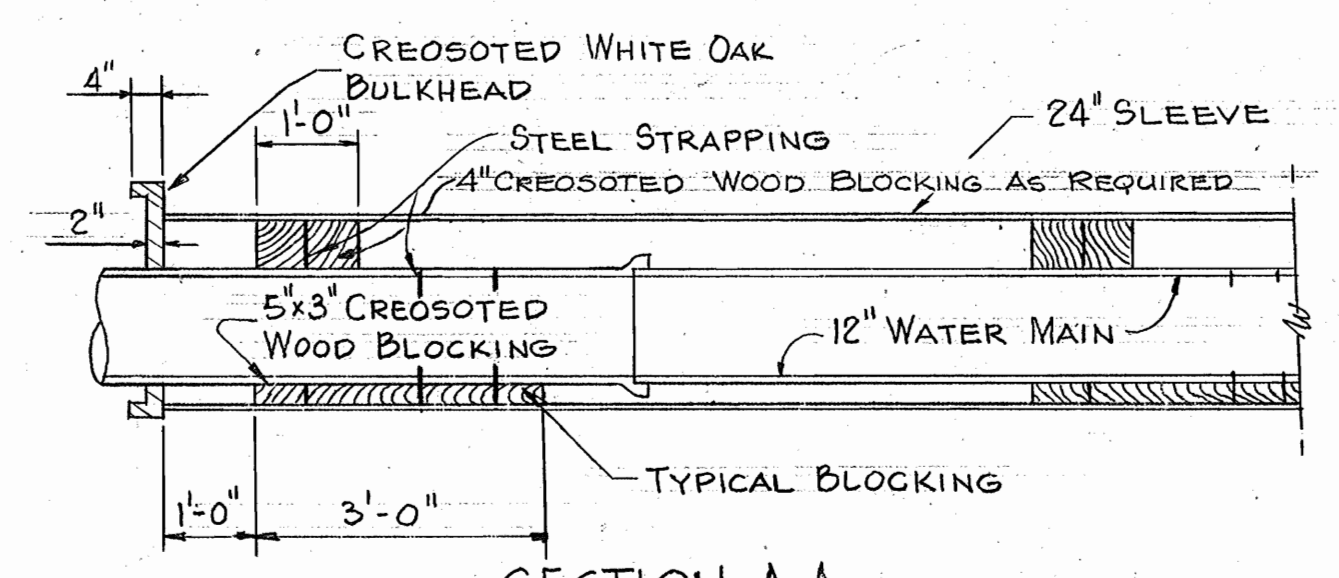
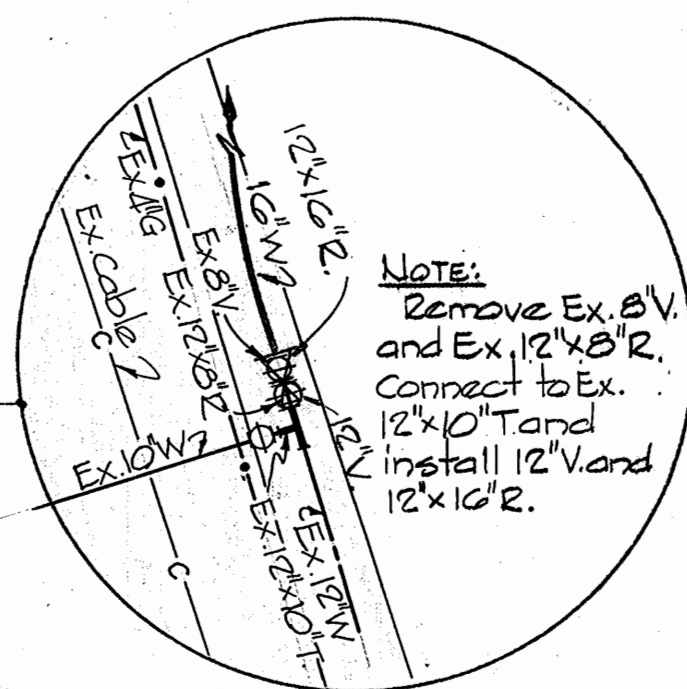
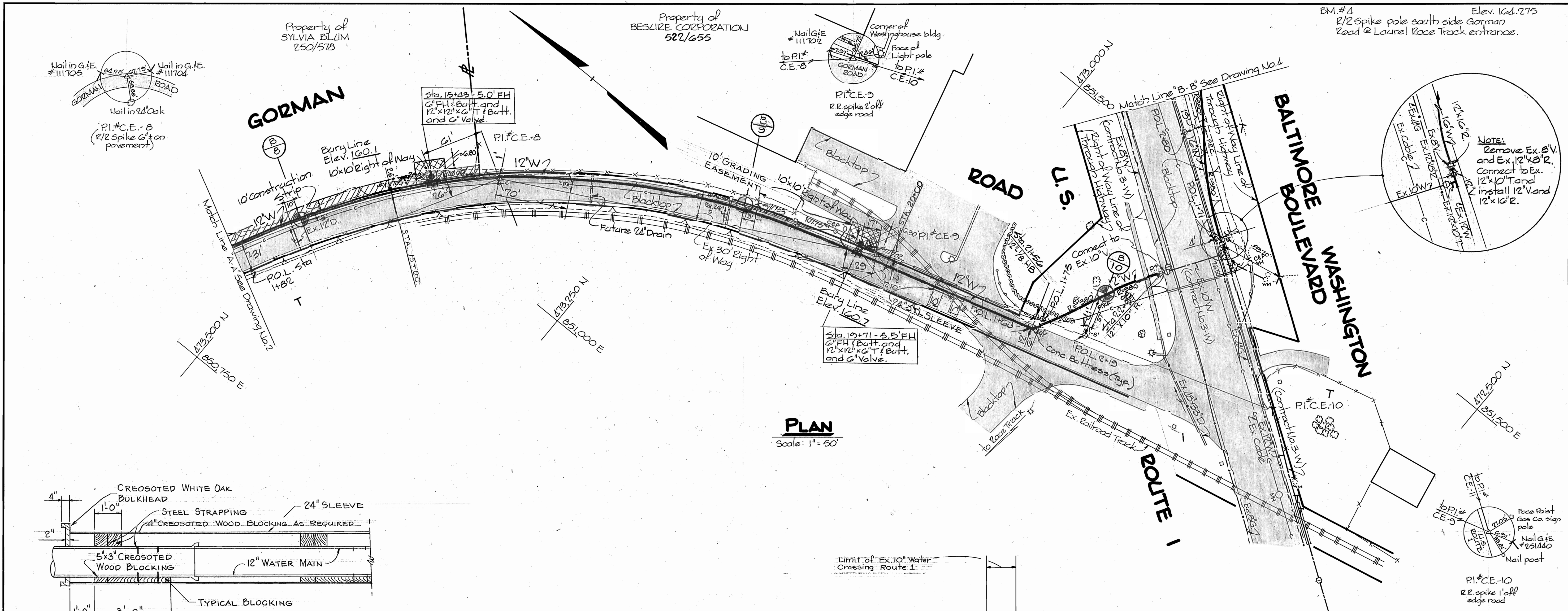
PLAN AND PROFILE
OF WATER MAIN

WATER MAINS IN
U.S. ROUTE 1 AND GORMAN ROAD
ELECTION DISTRICT - GUILFORD NO. 6

DRAWING NO. 2 OF 4
SCALE AS SHOWN
41-473/051

AS BUILT PL# 10791, 10792

WS 888-W/2



TYPE OF BUILDINGS	N/A
NUMBER OF LOTS	N/A
NUMBER OF WHC	0
NUMBER OF SHC	N/A
DRAINAGE AREA	SAVAGE WWTP

SHOWING SECTION OF 12" WATER MAIN IN 24" SLEEVE @ RAILROAD CROSSING ON GORMAN RD. SLEEVE TO BE JACKED AND BORED UNDER RAILROAD

DETAIL - 24" DIA. SLEEVE
FOR RAILROAD CROSSING ON GORMAN ROAD

DEPARTMENT OF PUBLIC WORKS
HOWARD COUNTY, MARYLAND
JAMES A. ... 2-19-80
CHIEF - BUREAU OF UTILITIES DATE

CENTURY ENGINEERING, INC.
CONSULTING ENGINEERS - PLANNERS
TOWSON, MARYLAND 21204

DEPARTMENT OF PUBLIC WORKS
HOWARD COUNTY, MARYLAND
JAMES A. ... 2-19-80
DIRECTOR OF PUBLIC WORKS DATE

WOLF ... 2-8-80
CHIEF - BUREAU OF ENGINEERING DATE

CONTRACT No. 888-W
CAPITAL PROJECT W-7-8093

PLAN AND PROFILE
OF WATER MAIN

WATER MAINS IN
U.S. ROUTE 1 AND GORMAN ROAD
ELECTION DISTRICT - GUILFORD NO. 6

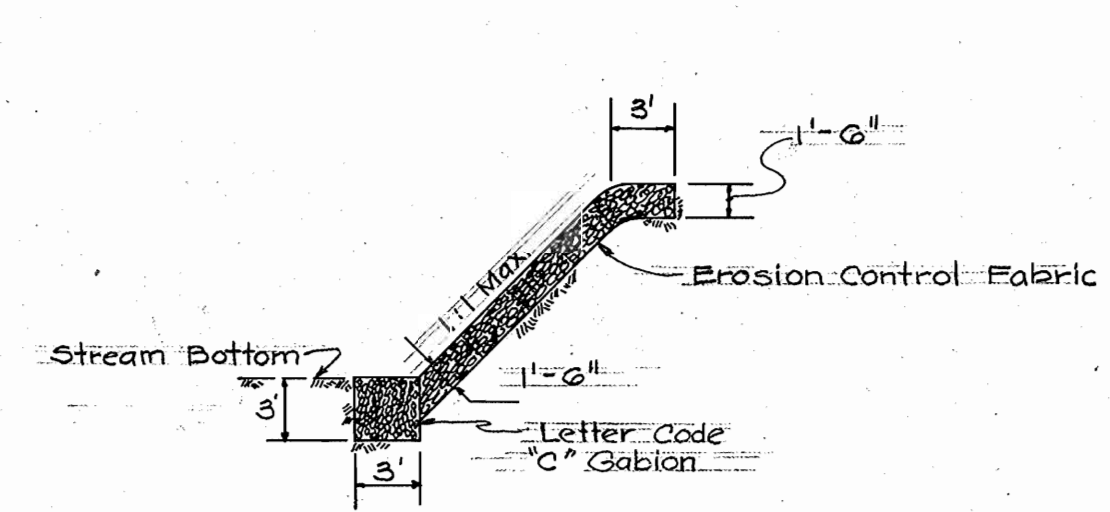
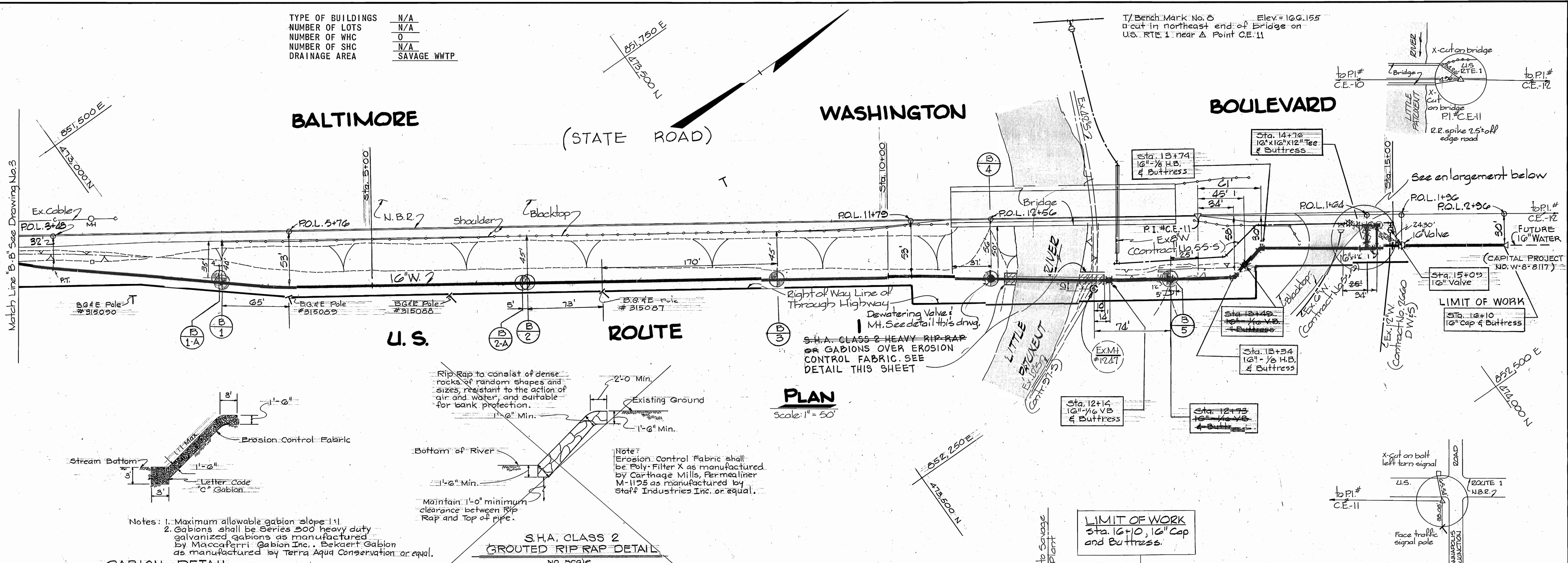
DRAWING NO. 3 OF 4
SCALE AS SHOWN

47-473/051
47-473/052.5
47-473/052.5

WS 888 - W/3

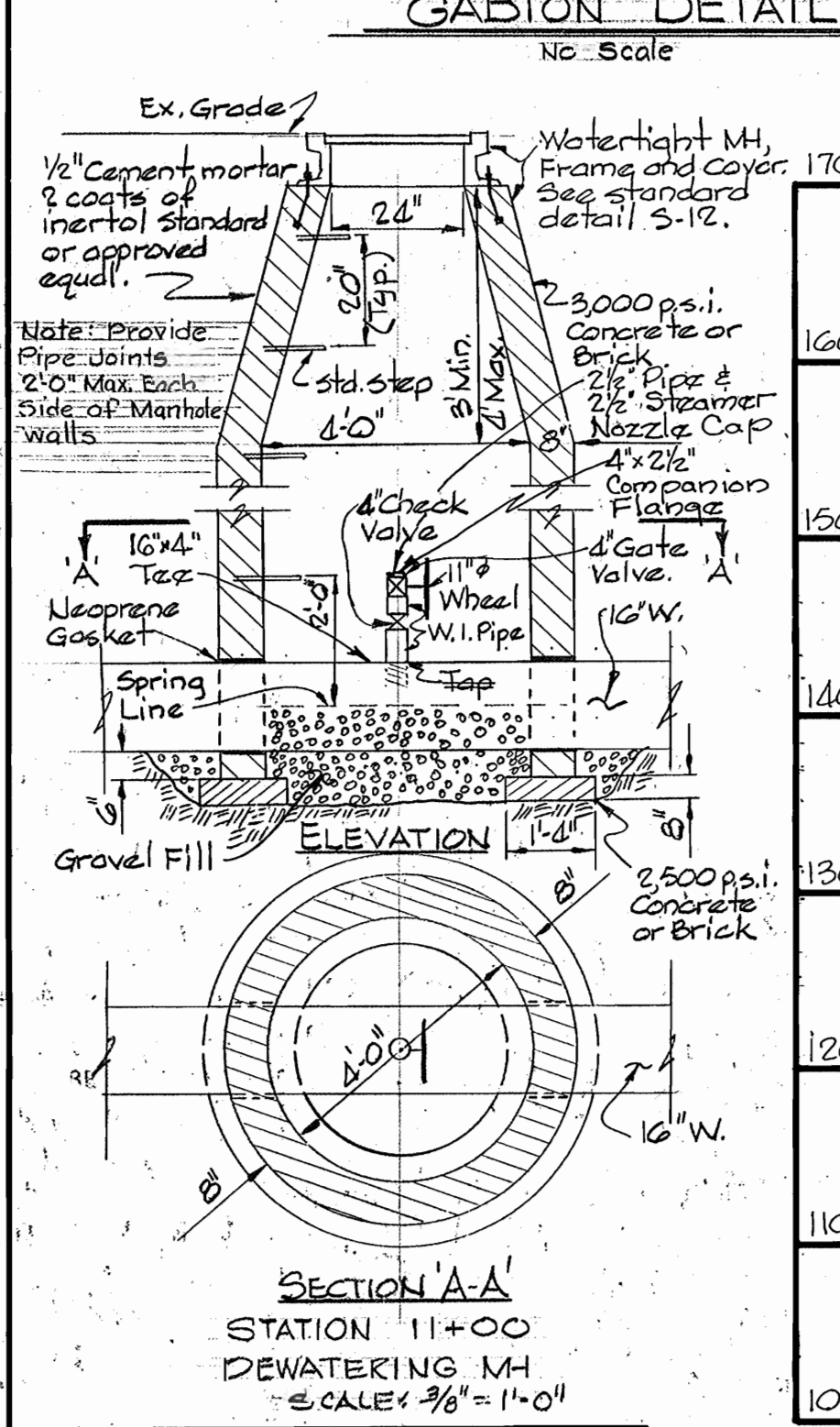
TYPE OF BUILDINGS	N/A
NUMBER OF LOTS	N/A
NUMBER OF WHC	0
NUMBER OF SHC	N/A
DRAINAGE AREA	SAVAGE WWTP

T/Bench Mark No. 8 Elev. = 166.155
 0' cut in northeast end of Bridge on
 U.S. RTE. 1 near Δ Point C.E. 11

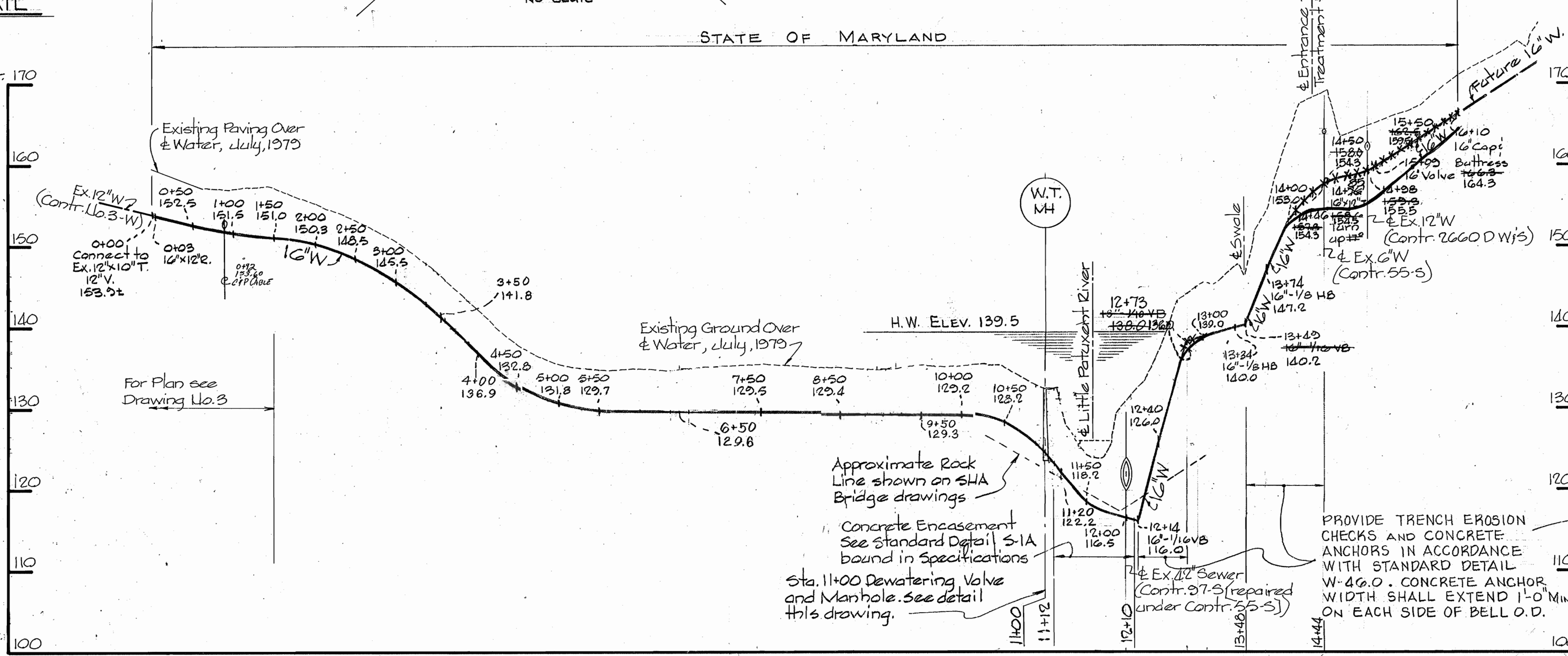


Notes: 1. Maximum allowable gabion slope 1:1
 2. Gabions shall be Series 300 heavy duty galvanized gabions as manufactured by Maccaferri Gabion Inc., Bekart Gabion as manufactured by Terra Aqua Conservation or equal.

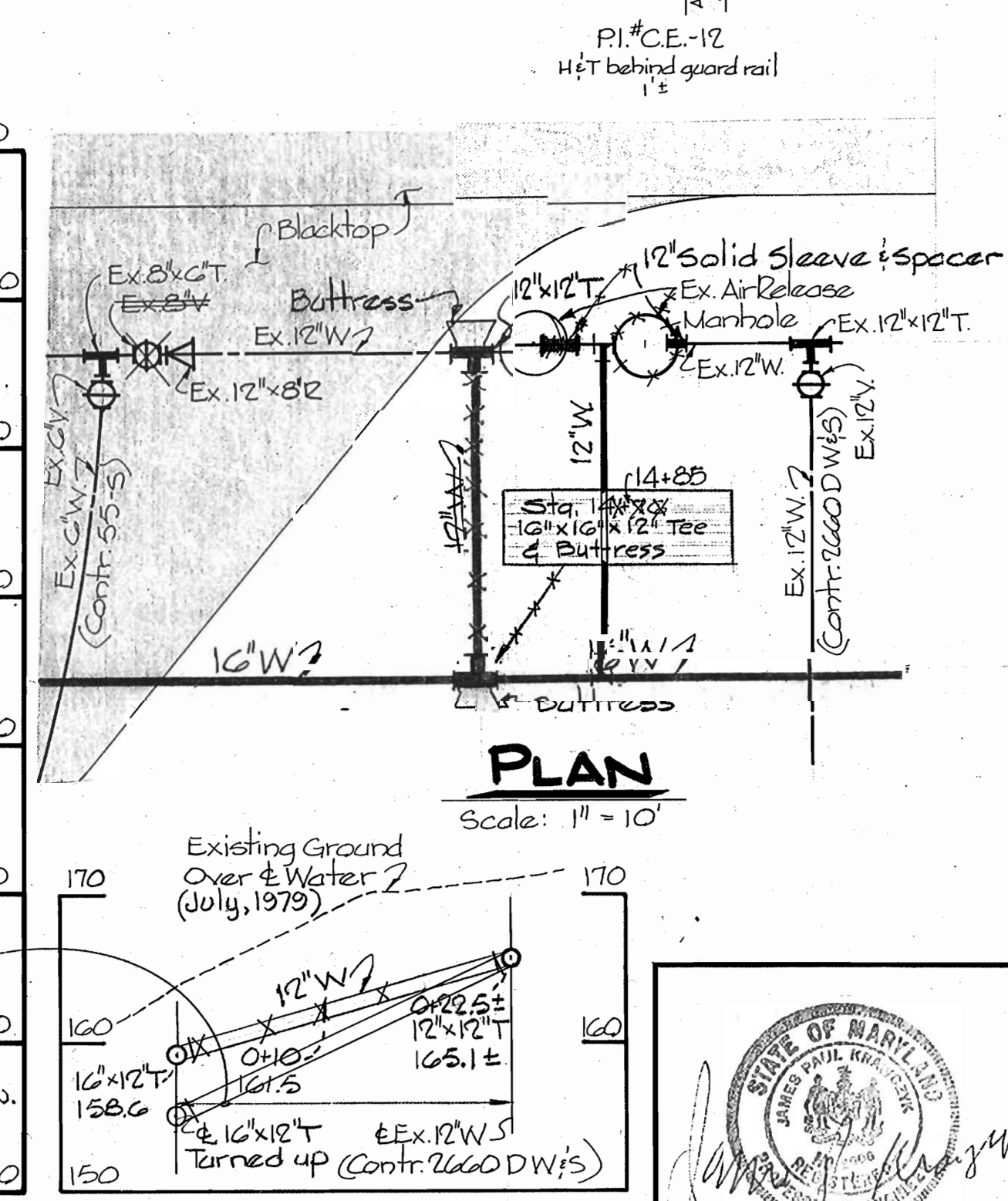
S.H.A. CLASS 2 GROUTED RIP RAP DETAIL
 No Scale



SECTION A-A
 STATION 11+00
 DEWATERING M.H.
 SCALE: 3/8" = 1'-0"



PROFILE
 Scale: Hor. 1" = 100'
 Vert. 1" = 10'



PROFILE
 Scale: Hor. 1" = 10'
 Vert. 1" = 10'

DEPARTMENT OF PUBLIC WORKS
 HOWARD COUNTY, MARYLAND
 Chief - Bureau of Utilities DATE

CENTURY ENGINEERING, INC.
 CONSULTING ENGINEERS - PLANNERS
 TOWSON, MARYLAND 21204

DEPARTMENT OF PUBLIC WORKS
 HOWARD COUNTY, MARYLAND
 Director of Public Works DATE

CONTRACT No. 888-W
 CAPITAL PROJECT W-7-8093

PLAN AND PROFILE
 OF WATER MAIN

WATER MAINS IN
 U.S. ROUTE 1 AND GORMAN ROAD
 ELECTION DISTRICT - GUILFORD NO. 6

DRAWING NO. 4 OF 4
 SCALE AS SHOWN