

Water & Sewer Codes  
 Water No. F-11  
 Sewer No. 5,850,000/5,860,000

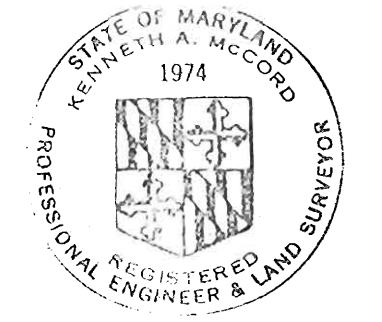
Wastewater Treatment	Savage
No. of S.H.C.'s	46
No. of W.H.C.'s	51
Type of Lots	Single Family
No. of Lots	51

# CONTRACT NO. 2885D-W&S

## DORSEY HALL

### HOWARD COUNTY, MARYLAND DEPARTMENT OF PUBLIC WORKS

QUANTITIES			
ITEM	BID	AS-BUILT	MATERIAL/SUPPLIER
8" S	2500 L.F.	2430 L.F.	JOHNS MANVILLE
Manholes	145 V.F.		CONC. PROD. OF AMERICA
8" Water	760 L.F.	786 L.F.	GRIFFIN
6" Water	1740 L.F.	1658 L.F.	GRIFFIN
6" V. (Excluding F.H.V.)	4	4	DRESSER
Fire Hydrants	4	4	DRESSER



*Kenneth A. McLeod*  
 Dorsey Hall - Phase III  
 Section I Area 4  
 Contract No. 2885D-W&S

DEPARTMENT OF PUBLIC WORKS  
 HOWARD COUNTY, MARYLAND  
 James J. Kelly, Jr. per Joe 3/25/80  
 CHIEF BUREAU OF UTILITIES - DATE  
 Kenneth S. Kelly 3-25-80  
 CHIEF BUREAU OF ENGINEERING - DATE  
**WHITMAN, REQUARDT & ASSOCIATES**  
 ENGINEERS  
 1304 ST. PAUL ST.  
 BALTIMORE, MARYLAND

DEPARTMENT OF PUBLIC WORKS  
 HOWARD COUNTY, MARYLAND  
*Geoff F. Newman*  
 DIRECTOR OF PUBLIC WORKS  
 3-26-80  
 DATE

CONTRACT NO. 2885D-W&S

LOCATION MAP OF  
 WATER & SEWER MAINS

ELECTION DISTRICT  
 ELLICOTT CITY NO. 2

DRAWING NO. 1 OF 5  
 SCALE 1"=600'

W.O. 7423

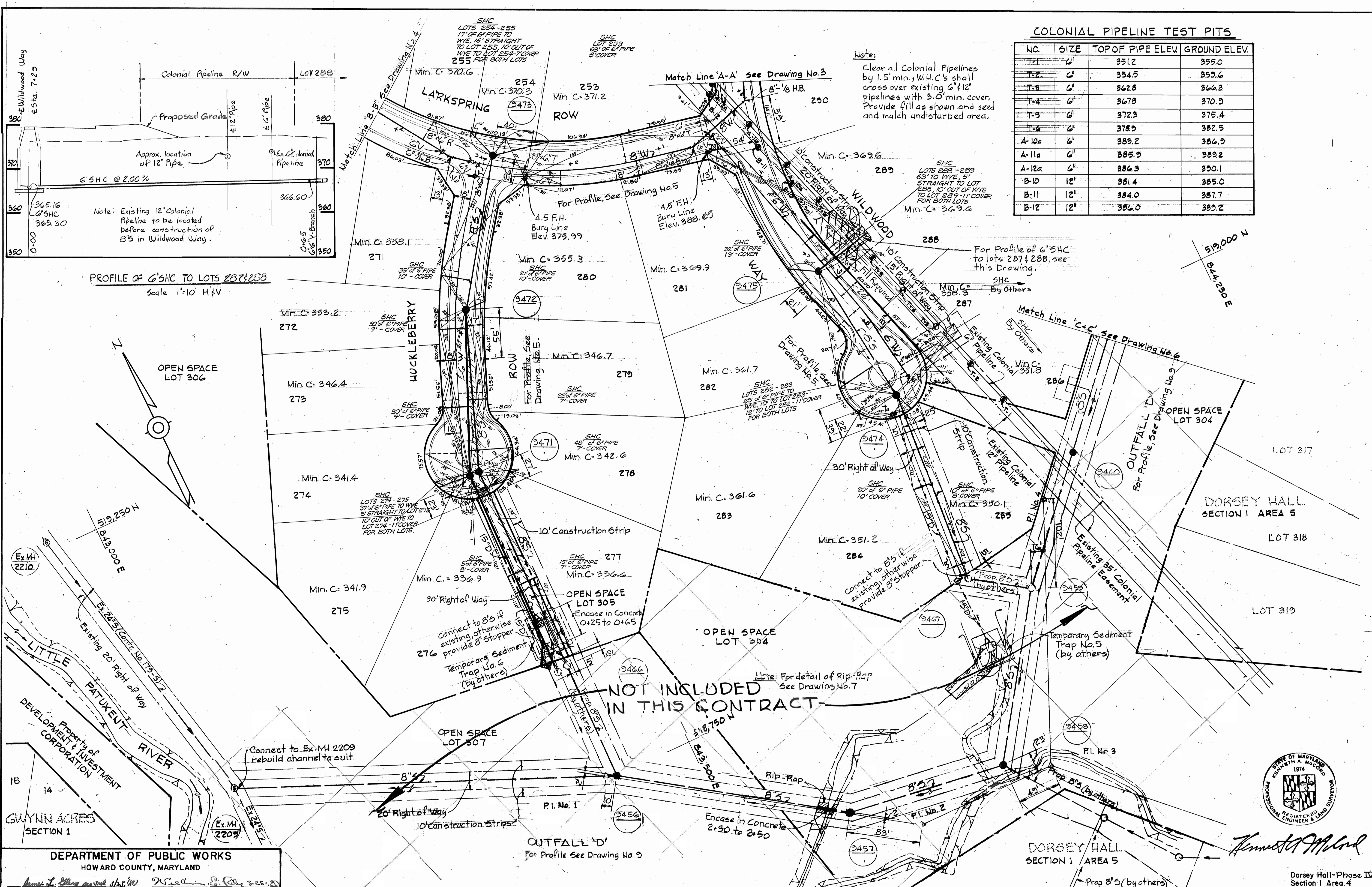
MARCH 17, 1980

AS-BUILT OCT. 2, 1980

COLONIAL PIPELINE TEST PITS

NO.	SIZE	TOP OF PIPE ELEV.	GROUND ELEV.
T-1	6"	351.2	355.0
T-2	6"	354.5	359.6
T-3	6"	362.8	366.3
T-4	6"	367.8	370.5
T-5	6"	372.3	375.4
T-6	6"	378.2	382.5
A-10a	6"	383.2	386.9
A-11a	6"	385.9	389.2
A-12a	6"	386.3	390.1
B-10	12"	381.4	385.0
B-11	12"	384.0	387.7
B-12	12"	386.0	389.2

Note:  
Clear all Colonial Pipelines by 1.5' min. W.H.C.'s shall cross over existing 6" & 12" pipelines with 3.0' min. cover. Provide fill as shown and seed and mulch undisturbed area.



PROFILE OF 6" SHC TO LOTS 287 & 288  
Scale 1"=10' H&V

NOT INCLUDED IN THIS CONTRACT

DEPARTMENT OF PUBLIC WORKS  
HOWARD COUNTY, MARYLAND

WHITMAN, REQUARDT & ASSOCIATES  
ENGINEERS  
1304 ST. PAUL ST.  
BALTIMORE, MARYLAND

DEPARTMENT OF PUBLIC WORKS  
HOWARD COUNTY, MARYLAND

CONTRACT NO. 2885D-W8S

PLAN OF WATER & SEWER MAINS

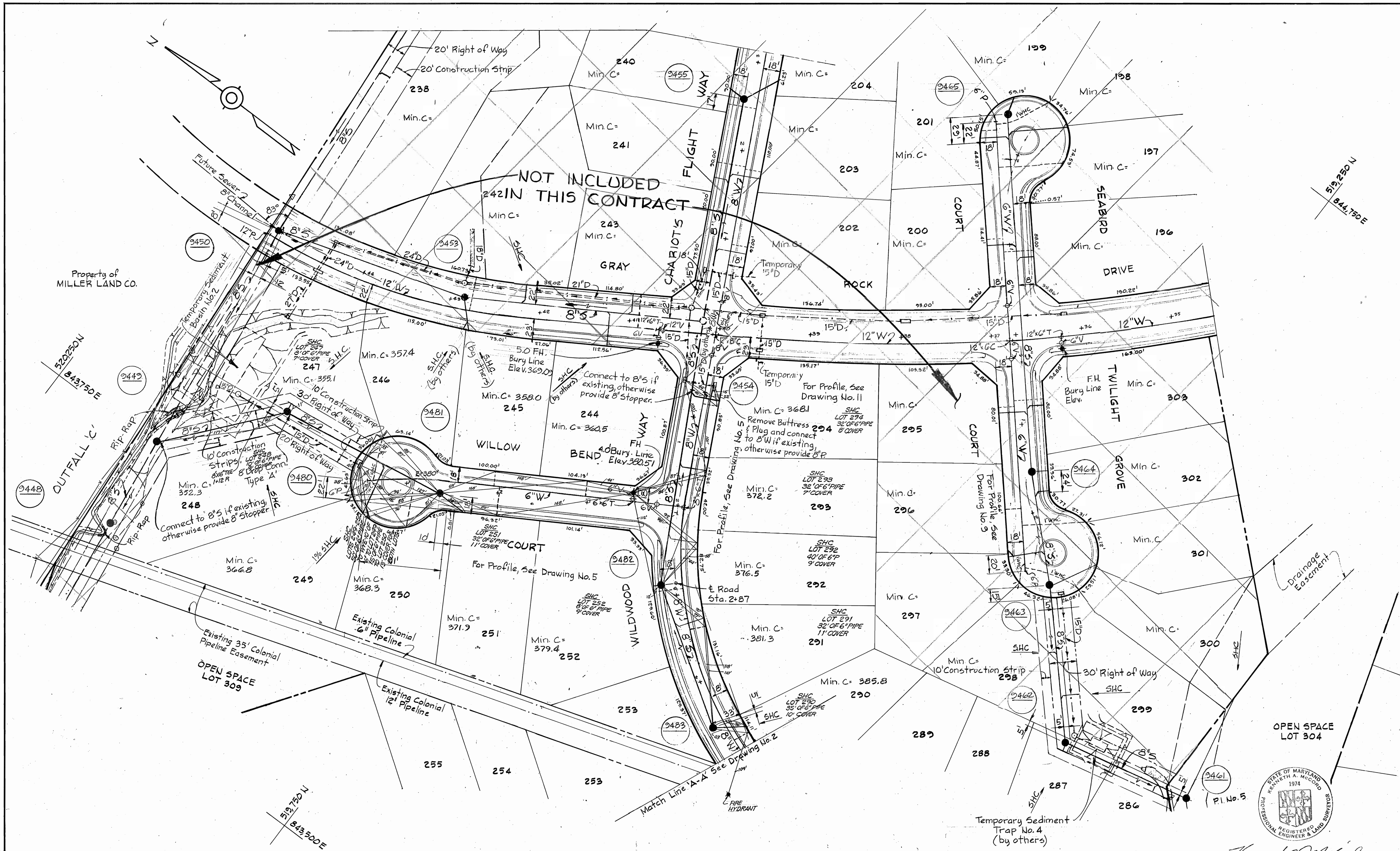
ELECTION DISTRICT  
ELLCOTT CITY NO. 2

DRAWING NO. 2 OF 5

SCALE 1"=50'

DORSEY HALL-Phase IV  
Section 1 Area 4  
Contract No. 2885D-W12

MARCH 17, 1980



DEPARTMENT OF PUBLIC WORKS  
HOWARD COUNTY, MARYLAND

*James L. May* CHIEF-BUREAU OF UTILITIES  
*Richard E. Rice* CHIEF-BUREAU OF ENGINEERING

WHITMAN, REQUARDT & ASSOCIATES  
ENGINEERS  
1304 ST. PAUL ST.  
BALTIMORE, MARYLAND

DEPARTMENT OF PUBLIC WORKS  
HOWARD COUNTY, MARYLAND

*John F. Nunn* DIRECTOR OF PUBLIC WORKS  
3-26-80 DATE

CONTRACT NO. 2885D-W&S

PLAN OF  
WATER & SEWER MAINS

ELECTION DISTRICT  
ELLICOTT CITY NO. 2

DORSEY HALL - PHASE IV  
SECTION 1 AREA 4  
CONTRACT NO. 2885D-W&S

*Kenneth A. McCord*  
REGISTERED PROFESSIONAL ENGINEER & LAND SURVEYOR  
STATE OF MARYLAND  
KENNETH A. MCCORD  
1974

DRAWING NO. 3 OF 5  
SCALE 1" = 50'

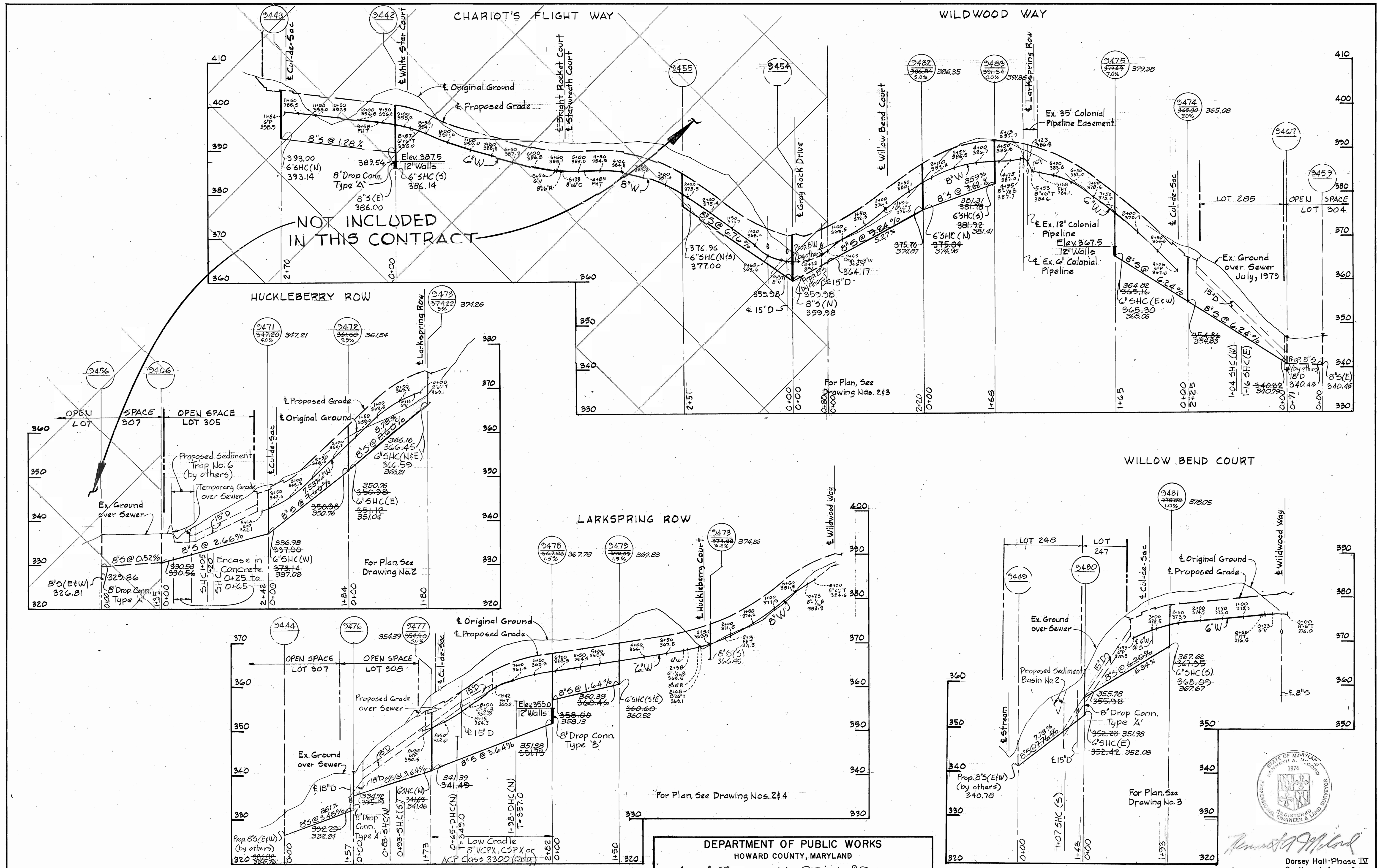
W.O. 7423

MARCH 17, 1980

AS-BUILT OCT. 2, 1980

C/18 M - 0888 5M





NOT INCLUDED IN THIS CONTRACT

DEPARTMENT OF PUBLIC WORKS  
 HOWARD COUNTY, MARYLAND  
 CONTRACT NO. 2885D-W&S



Dorsey Hall-Phase IV  
 Section 1 Area 4  
 Contract No. 2885D-W&S

WHITMAN, REQUARDT & ASSOCIATES  
 ENGINEERS  
 1304 ST. PAUL ST.  
 BALTIMORE, MARYLAND

DEPARTMENT OF PUBLIC WORKS  
 HOWARD COUNTY, MARYLAND  
 3-26-80  
 DATE

CONTRACT NO. 2885D-W&S  
 PROFILE OF  
 WATER & SEWER MAINS

ELECTION DISTRICT  
 ELLICOTT CITY NO. 2

DRAWING NO. 5 OF 5  
 SCALE H=1"=100' V=1"=10'

W.O. 7423

MARCH 17, 1980

AS-BUILT OCT. 2, 1980