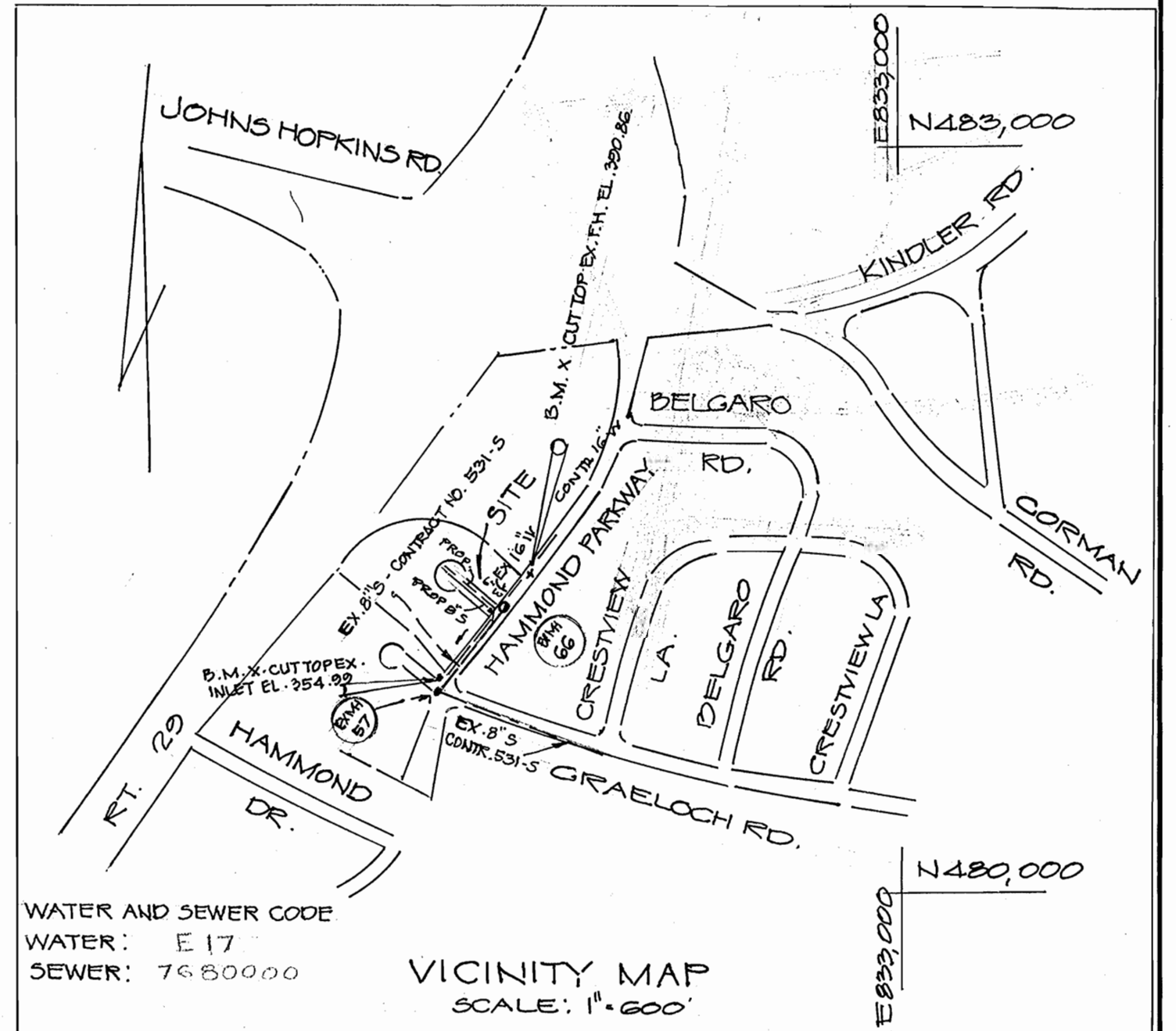
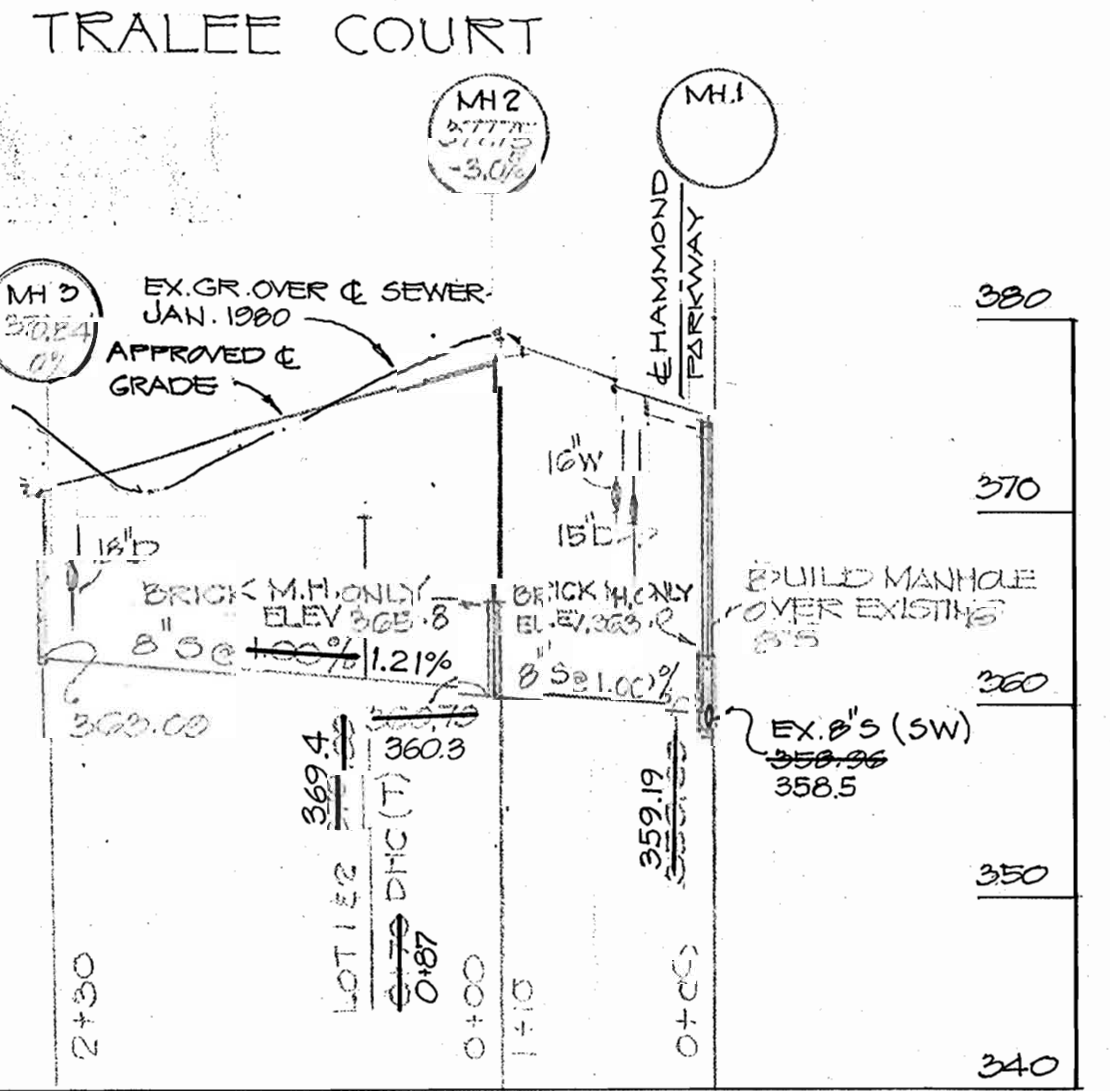
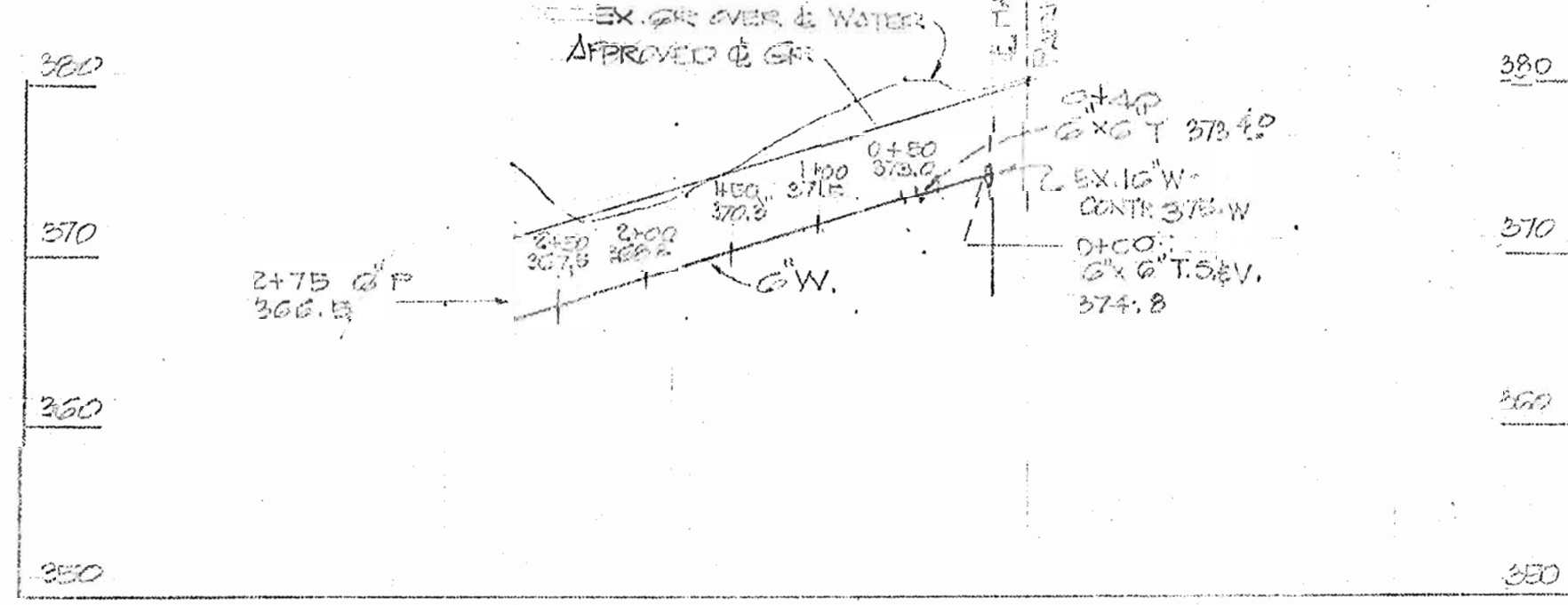
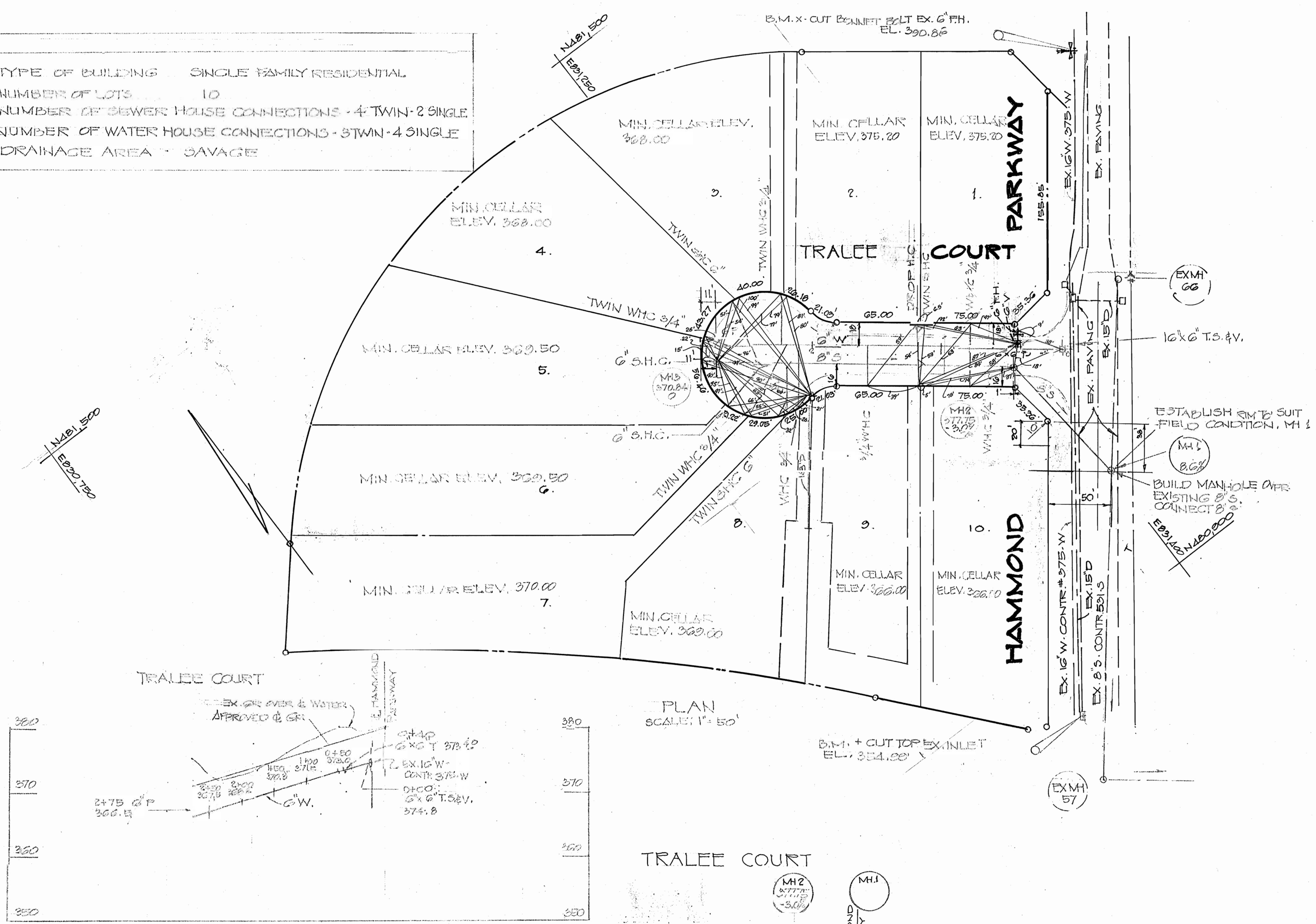


TYPE OF BUILDING SINGLE FAMILY RESIDENTIAL
 NUMBER OF LOTS 10
 NUMBER OF SEWER HOUSE CONNECTIONS 4 TWIN-2 SINGLE
 NUMBER OF WATER HOUSE CONNECTIONS 4 TWIN-4 SINGLE
 DRAINAGE AREA SAVAGE



- APPROXIMATE LOCATIONS OF EXISTING UTILITIES ARE SHOWN. THE CONTRACTOR SHALL TAKE ALL NECESSARY PRECAUTIONS TO PROTECT THE EXISTING UTILITIES AND TO MAINTAIN UNINTERRUPTED SERVICE. ANY DAMAGE INCURRED DUE TO THE CONTRACTOR'S OPERATIONS SHALL BE REPAIRED IMMEDIATELY AT THE CONTRACTOR'S EXPENSE.
- ALL PIPE ELEVATIONS SHOWN ARE INVERT ELEVATIONS.
- THE CONTRACTOR SHALL NOTIFY M&S UTILITY (559-0100) AT LEAST THREE DAYS (3) PRIOR TO BEGINNING ANY CONSTRUCTION SHOWN HEREON.
- SEE STANDARD DETAILS BOUND IN SPECIFICATIONS.
- CLEAR ALL UTILITIES BY A MIN. OF 6" CLEAR ALL UTILITY POLES BY 2'-0" MINIMUM OR TUNNEL AS REQUIRED. ANY COSTS INCURRED TO CONTRACTOR FOR TUNNELING AS BRACING POLES SHALL BE INCLUDED IN THE UNIT PRICE BID FOR EXCAVATION.
- THE CONTRACTOR SHALL PROVIDE A PIPE JOINT IN ALL SEWER MAINS WITHIN 2'-0" OF EXTERIOR MANHOLE WALLS.
- ALL MANHOLES SHALL BE 4'-0" INSIDE DIAMETER UNLESS OTHERWISE NOTED.
- OUTLETS OR ANCHOR ALL WATER MAIN FITTINGS WITH CONCRETE. ALL VALVES SHALL BE STRAPPED TO TEES IN ACCORDANCE WITH STANDARD DETAILS.
- ALL WATER MAINS TO HAVE A MINIMUM OF 3'-5" COVER UNLESS OTHERWISE NOTED.
- ALL HORIZONTAL AND VERTICAL CONTROLS ARE BASED ON THE MARYLAND STATE GRID SYSTEM.
- ALL WATER MAINS TO BE C.I.P. PIPE UNLESS OTHERWISE SHOWN.
- ALL VALVES TO BE STRAPPED TO FACE IN ACCORDANCE WITH STANDARD DETAILS.
- BLOCK ALL FITTINGS WITH CONCRETE. SEE DETAILS BOUND IN SPECIFICATIONS.
- ALL SEWER MAINS SHALL BE C.S.P. V.C.P. OR ACP CLASS 2400 UNLESS OTHERWISE NOTED.
- CONTRACTOR SHALL LOCATE EXISTING UTILITIES IN ADVANCE OF CONSTRUCTION OPERATIONS IN THE VICINITY OF PROPOSED UTILITIES.
- TREES ARE TO BE PROTECTED FROM DAMAGE TO MAXIMUM EXTENT. TREES LOCATED WITHIN THE CONSTRUCTION STRIP ARE NOT TO BE REMOVED OR DAMAGED BY THE CONTRACTOR.
- CONTRACTOR SHALL REMOVE TREES, STUMPS, AND ROCKS ALONG LINE OF EXCAVATION AS DIRECTED BY THE ENGINEER. PAYMENT FOR SUCH REMOVAL SHALL BE INCLUDED IN THE UNIT PRICE BID FOR EXCAVATION AND BACKFILL FOR WATER & SEWER MAINS.
- DEBENCH MARKS:
 HUDKINS ASSOC. D.M. EL. 354.99
 CUT IN TOP OF INLET AT HAMMOND PARKWAY & GRAELOCH ROAD
 HUDKINS ASSOC. D.M.
 DESCRIPTION:
 TOP EX. FIRE HYDRANT (X CUT) WEST SIDE HAMMOND PARKWAY - 280' N.E. OF E. PROP. COURT EL. 320.00
- PLACE REGULATION 'MEN WORKING' & WARNING SIGNS AS REQUIRED TO COMPLY WITH MARYLAND STATE HIGHWAY ADMINISTRATION MANUAL OF TRAFFIC CONTROL FOR HIGHWAY CONSTRUCTION AND MAINTENANCE OPERATIONS.

| QUANTITIES | | | |
|------------|---------|----------|---|
| ITEM | ESTMD. | AS BUILT | MATERIAL/SUPPLIER |
| 8" SEWER | 240 LF | 396.9 | CERTAINTEED ACP / A&P WATER AND CLASS 2400-TYPE II SEWER SUPPLY |
| 6" WATER | 75 LF | 285.1 | ATLANTIC STATES-DRIP / FLOW INDUSTRIES |
| MANHOLES | 4 | 3705 | |
| 6" SHC | 10 1/4" | 224 | CERTAINTEED ACP / A&P WATER AND CLASS 2400-TYPE II SEWER SUPPLY |
| 3/4" WHC | 75 1/4" | 186 | 3/4" COPPER TUBING - TYPE K |
| 6" VALVES | 2 | 2 | |
| 2" FH | 1 | 1 | M&H / FLOW INDUSTRIES |

CONTRACT NO. 2883-D-W&S
 TRALEE COURT
 HAMMOND WOODS
 WATER & SEWER EXTENSION

DEPARTMENT OF PUBLIC WORKS
 HOWARD COUNTY, MARYLAND
 CHIEF-BUREAU OF UTILITIES
 DATE 3-1-80
 CHIEF-BUREAU OF ENGINEERING
 DATE 3-1-80

DEPARTMENT OF PUBLIC WORKS
 HOWARD COUNTY, MARYLAND
 DIRECTOR OF PUBLIC WORKS
 DATE 3-1-80

CONTRACT NO. 2883-D-W&S

PLAN AND PROFILE
 OF WATER & SEWER EXTENSIONS

HAMMOND PARK
 ELECTION DISTRICT No. 6 HOWARD COUNTY, MARYLAND

DRAWING NO. 1 OF 1
 SCALE AS SHOWN

115-M-000
 CW