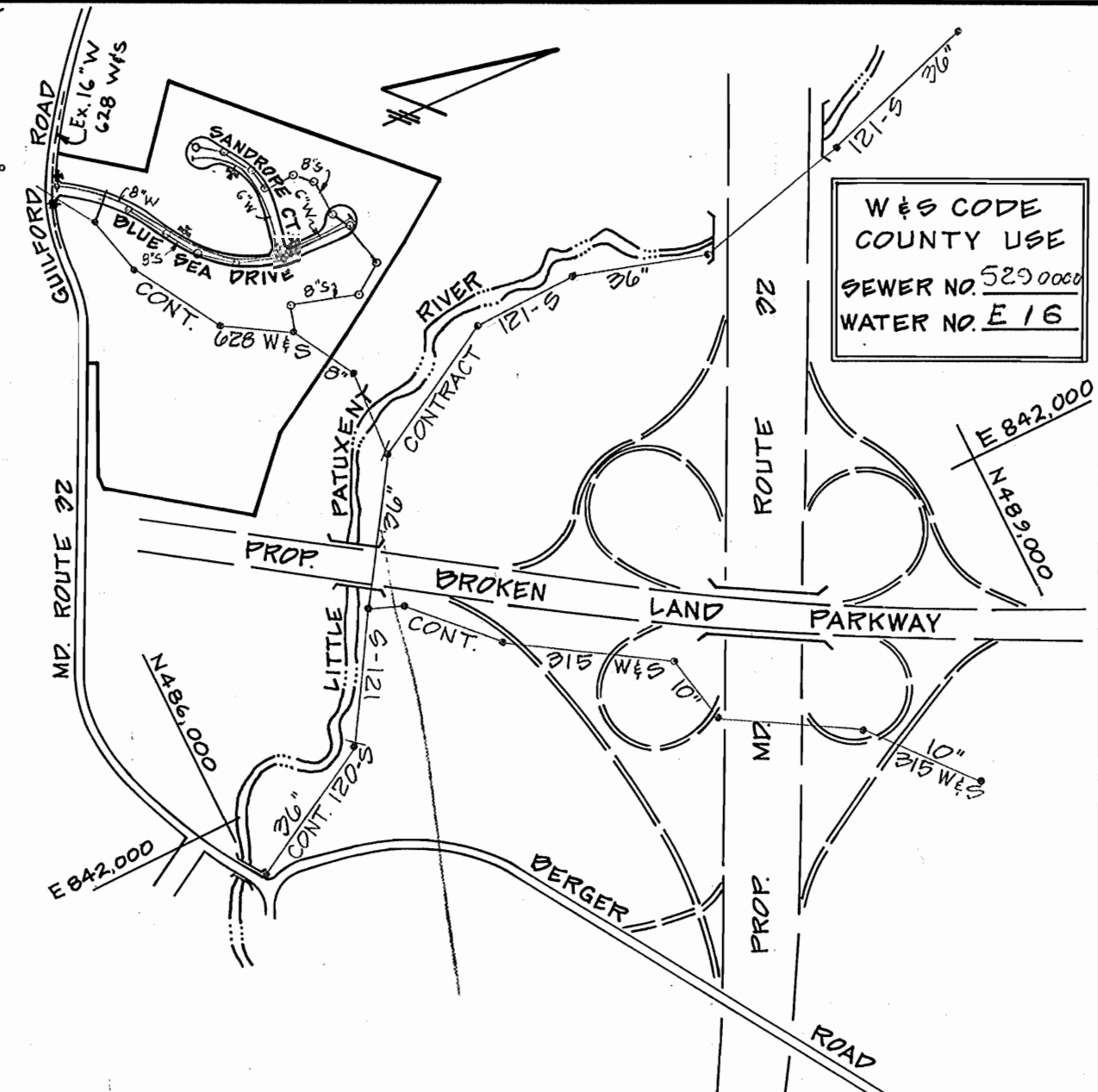


**BENCH MARKS**

NO.	DESCRIPTION	ELEV. UGGS
BM 1	TOP SAN. MANHOLE	320.73
BM 2	TOP SAN. MANHOLE	284.56



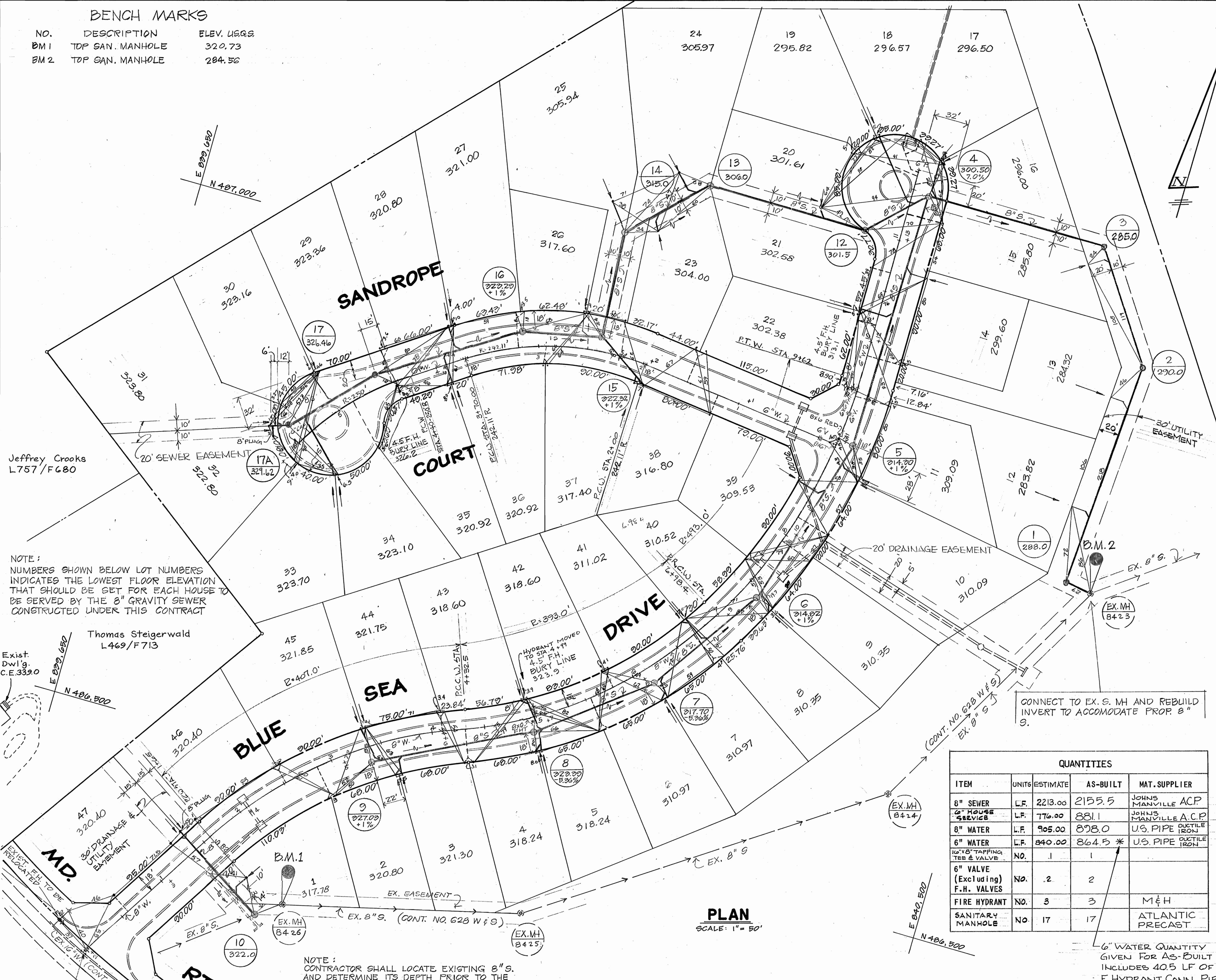
**VICINITY MAP**  
SCALE: 1" = 600'

TYPE OF BUILDINGS	SINGLE FAMILY
NUMBER OF LOTS	47
NUMBER OF WATER HOUSE CONNECTIONS	47
NUMBER OF SEWER HOUSE CONNECTIONS	47
DRAINAGE AREA	Little Patuxent

**GENERAL NOTES**

- APPROXIMATE LOCATION OF EXISTING MAINS ARE SHOWN. THE CONTRACTOR SHALL TAKE ALL NECESSARY PRECAUTIONS TO PROTECT EXISTING SERVICES AND MAINTAIN UNINTERRUPTED SUPPLY. ANY DAMAGE INCURRED SHALL BE REPAIRED IMMEDIATELY.
- ALL PIPE ELEVATIONS SHOWN ARE INVERT ELEVATIONS.
- ALL WATER MAINS TO BE C.T.P. AND/OR D.I.P. UNLESS OTHERWISE NOTED.
- THE CONTRACTOR SHALL LOCATE EXISTING UTILITIES A MINIMUM OF TWO WEEKS IN ADVANCE OF CONSTRUCTION OPERATIONS IN VICINITY OF UTILITIES.
- ALL WATER HOUSE CONNECTIONS SHALL BE FOR INSIDE METER SETTING.
- FOR ALL STANDARD DETAILS, SEE STANDARDS BOUND IN SPECIFICATIONS.
- THE CONTRACTOR SHALL PROVIDE A JOINT IN ALL SEWER MAINS WITHIN 2'-0" OF EXTERIOR MANHOLE WALLS.
- SOIL AROUND FIRE HYDRANTS TO BE COMPACTED IN ACCORDANCE WITH SECTION 5-15 OF THE STANDARD SPECIFICATIONS.
- ALL HORIZONTAL AND VERTICAL CONTROLS ARE BASED ON MARYLAND STATE DATUM.
- PLACE REGULATION "MEN WORKING" AND WARNING SIGN AS REQUIRED TO COMPLY WITH MARYLAND STATE HIGHWAY ADMINISTRATION MANUAL OF TRAFFIC CONTROL FOR HIGHWAY CONSTRUCTION AND MAINTENANCE OPERATIONS.
- ALL WATER MAINS TO HAVE A MINIMUM OF 3 1/2' COVER UNLESS OTHERWISE NOTED.
- TREES ARE TO BE PROTECTED FROM DAMAGE TO MAXIMUM EXTENT. TREES LOCATED WITHIN THE CONSTRUCTION STRIP ARE NOT TO BE REMOVED OR DAMAGED BY THE CONTRACTOR.
- CLEAR ALL UTILITIES BY A MINIMUM OF 12 INCHES.
- ALL FIRE HYDRANTS SHALL BE STRAPPED TO TEES AND SHALL BE BUTTRESSED WITH CONCRETE IN ACCORDANCE WITH STANDARD DETAILS.
- CONTRACTOR SHALL REMOVE TREES, STUMPS, AND ROOTS ALONG LINE OF EXCAVATION AS DIRECTED BY THE ENGINEER. PAYMENT FOR SUCH REMOVAL SHALL BE INCLUDED IN THE UNIT PRICE BID FOR EXCAVATION AND BACKFILL FOR WATER AND SEWER MAINS.
- ALL SEWERS SHALL BE V.C.P.X., C.S.P.X., OR A.C.P., CLASS 2400 UNLESS OTHERWISE NOTED.
- ALL MANHOLES SHALL BE 4'-0" INSIDE DIAMETER UNLESS OTHERWISE NOTED.
- PROFILE STATIONS SHALL BE ADJUSTED AS NECESSARY TO CONFORM TO PLAN DIMENSIONS.
- BLOCK ALL FITTINGS WITH CONCRETE. SEE STANDARDS BOUND IN SPECIFICATIONS.
- BURY LINE ELEVATIONS ON FIRE HYDRANTS SHALL BE SET TO THE ELEVATIONS SHOWN ON DRAWINGS.
- COST OF STRAPPING HYDRANTS AND VALVES TO TEES SHALL BE INCLUDED IN THE UNIT PRICES BID FOR FURNISHING AND LAYING WATER MAINS.
- CONTRACTOR SHOULD NOTIFY THE FOLLOWING UTILITIES OR AGENCIES AT LEAST FIVE (5) DAYS BEFORE STARTING WORK SHOWN ON THESE PLANS:

- CHESAPEAKE AND POTOMAC TELEPHONE CO. 725-9976
- BALTO. GAS AND ELECTRIC CO. - Underground
- ELECT. DIST. ENGR., Damage Control 234-5691
- GAS DISTRIBUTION ENGR. 559-0100
- BELL TELEPHONE SYSTEM 393-3649
- LONG DISTANCE CABLE DIVISION 393-3553



**PLAN**  
SCALE: 1" = 50'

ITEM	UNITS	QUANTITIES		MAT. SUPPLIER
		ESTIMATE	AS-BUILT	
8" SEWER	L.F.	223.00	2155.5	JOHNS MANVILLE ACP
6" HOUSE SERVICE	L.F.	776.00	881	JOHNS MANVILLE ACP
8" WATER	L.F.	905.00	878.0	U.S. PIPE CASTLE IRON
6" WATER	L.F.	840.00	864.5 *	U.S. PIPE CASTLE IRON
16"x8" TAPPING TEE & VALVE	NO.	1	1	
6" VALVE (Excluding) F.H. VALVES	NO.	2	2	
FIRE HYDRANT	NO.	3	3	M&H
SANITARY MANHOLE	NO.	17	17	ATLANTIC PRECAST

\* 6" WATER QUANTITY GIVEN FOR AS-BUILT INCLUDES 405 LF OF F. HYDRANT CONN. PIPES.

NOTE: NUMBERS SHOWN BELOW LOT NUMBERS INDICATES THE LOWEST FLOOR ELEVATION THAT SHOULD BE SET FOR EACH HOUSE TO BE SERVED BY THE 8" GRAVITY SEWER CONSTRUCTED UNDER THIS CONTRACT

NOTE: CONTRACTOR SHALL LOCATE EXISTING 8" S. AND DETERMINE ITS DEPTH PRIOR TO THE CONSTRUCTION OF MH 10.

CONNECT TO EX. S. MH AND REBUILD INVERT TO ACCOMMODATE PROP. 8" S.

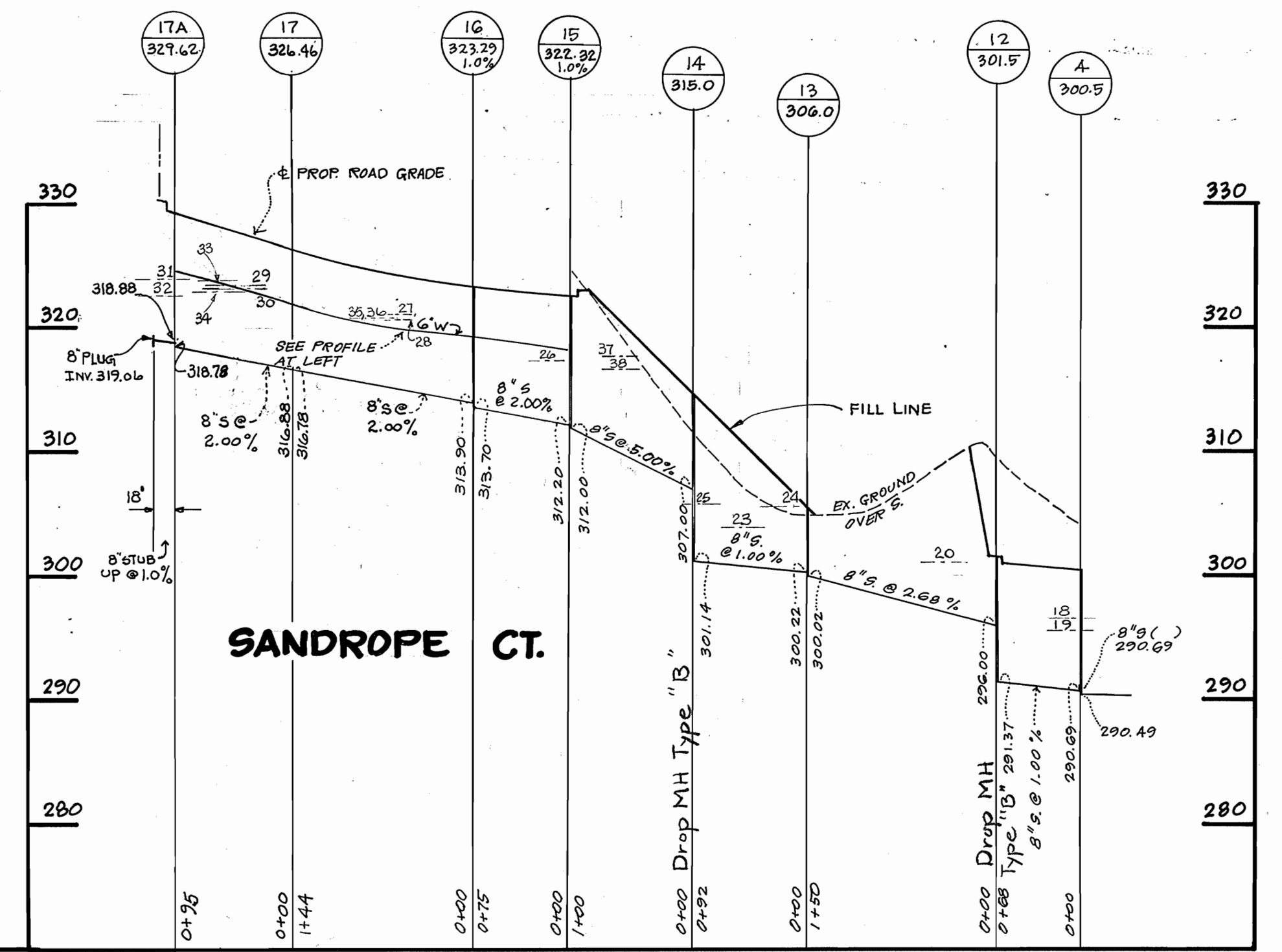
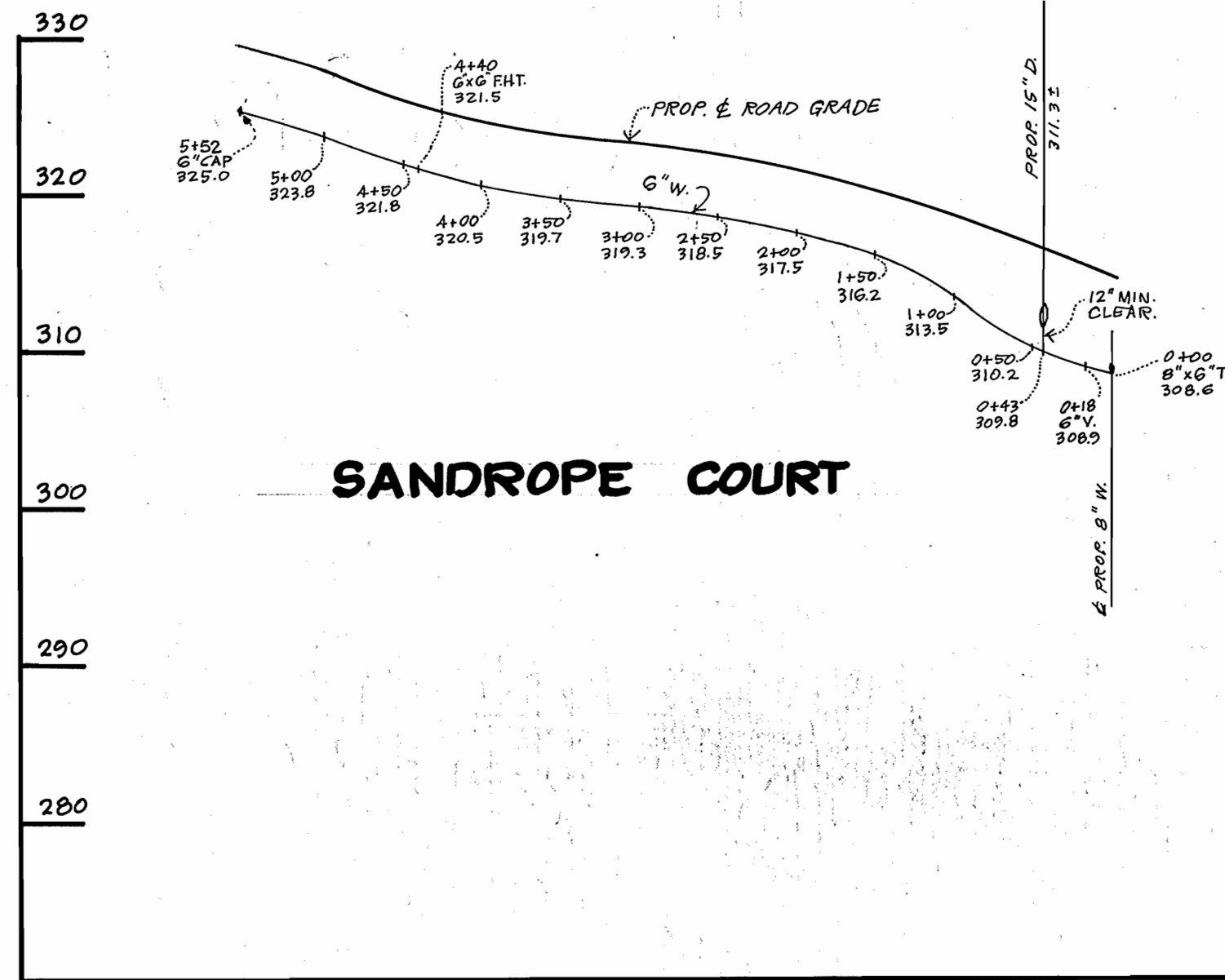
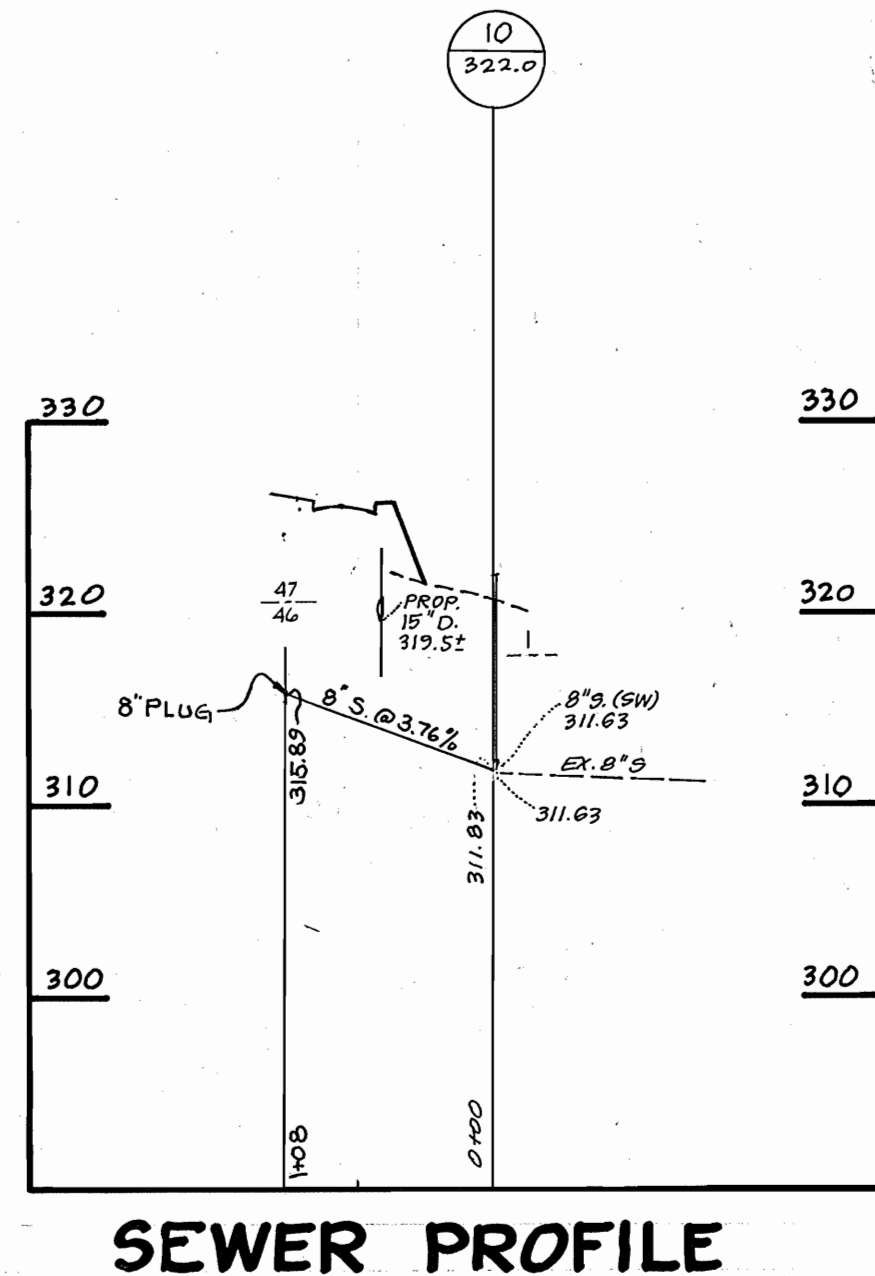
CENTURY ENGINEERING, INC.  
CONSULTING ENGINEERS - PLANNERS  
TOWSON, MARYLAND 21204

DEPARTMENT OF PUBLIC WORKS  
HOWARD COUNTY, MARYLAND  
James S. Glick, Chief-Bureau of Utilities  
Director of Public Works

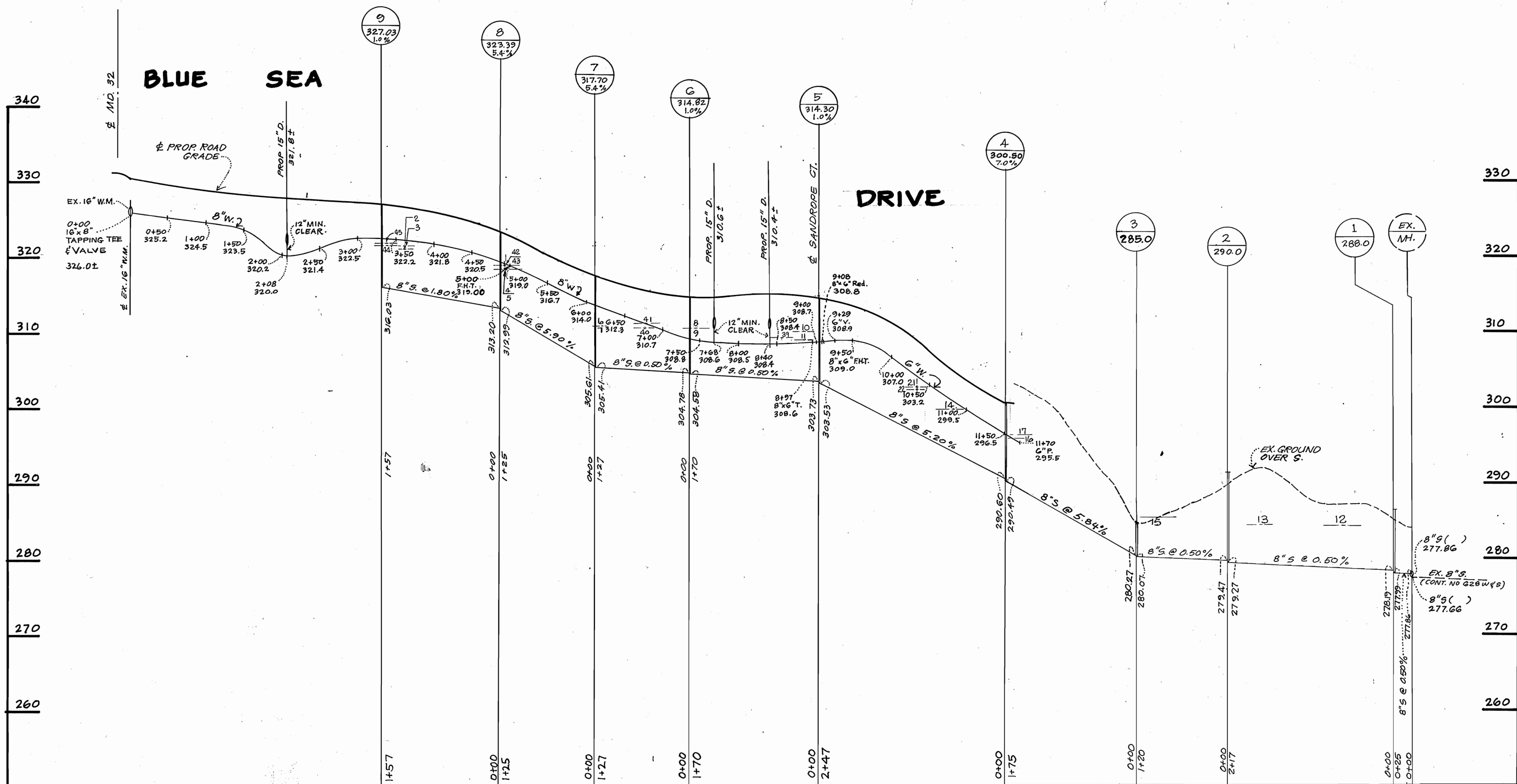
DEPARTMENT OF PUBLIC WORKS  
HOWARD COUNTY, MARYLAND  
Contract No. C2882-D-W&S  
12-5-79

VILLAGE OF KING'S CONTRIVANCE  
SECTION 2 AREA 3 PHASE I  
C 2882-D-W & S  
DRAWING NO. 1 OF 2  
SCALE 1" = 50'





WATER & SEWER PROFILES



WATER & SEWER PROFILES

DEPARTMENT OF PUBLIC WORKS  
 HOWARD COUNTY, MARYLAND  
 James A. Glavin 12/5/79  
 CHIEF-BUREAU OF UTILITIES DATE CHIEF-BUREAU OF ENGINEERING DATE

DEPARTMENT OF PUBLIC WORKS  
 HOWARD COUNTY, MARYLAND  
 M. F. Newman 12-5-79  
 DIRECTOR OF PUBLIC WORKS DATE

CONTRACT NO. 882-D-W&S

PLAN OF  
 WATER AND SEWER MAINS

VILLAGE OF KING'S CONTRIVANCE  
 SECTION 2 AREA 3 PHASE I  
 C 2882-D-W & S



VILLAGE OF KING'S CONTRIVANCE  
 6TH ELECTION DISTRICT  
 DRAWING NO. 2 OF 2  
 SCALE HOR. 1"=100' VER. 1"=10'

WS 882-W&S/2