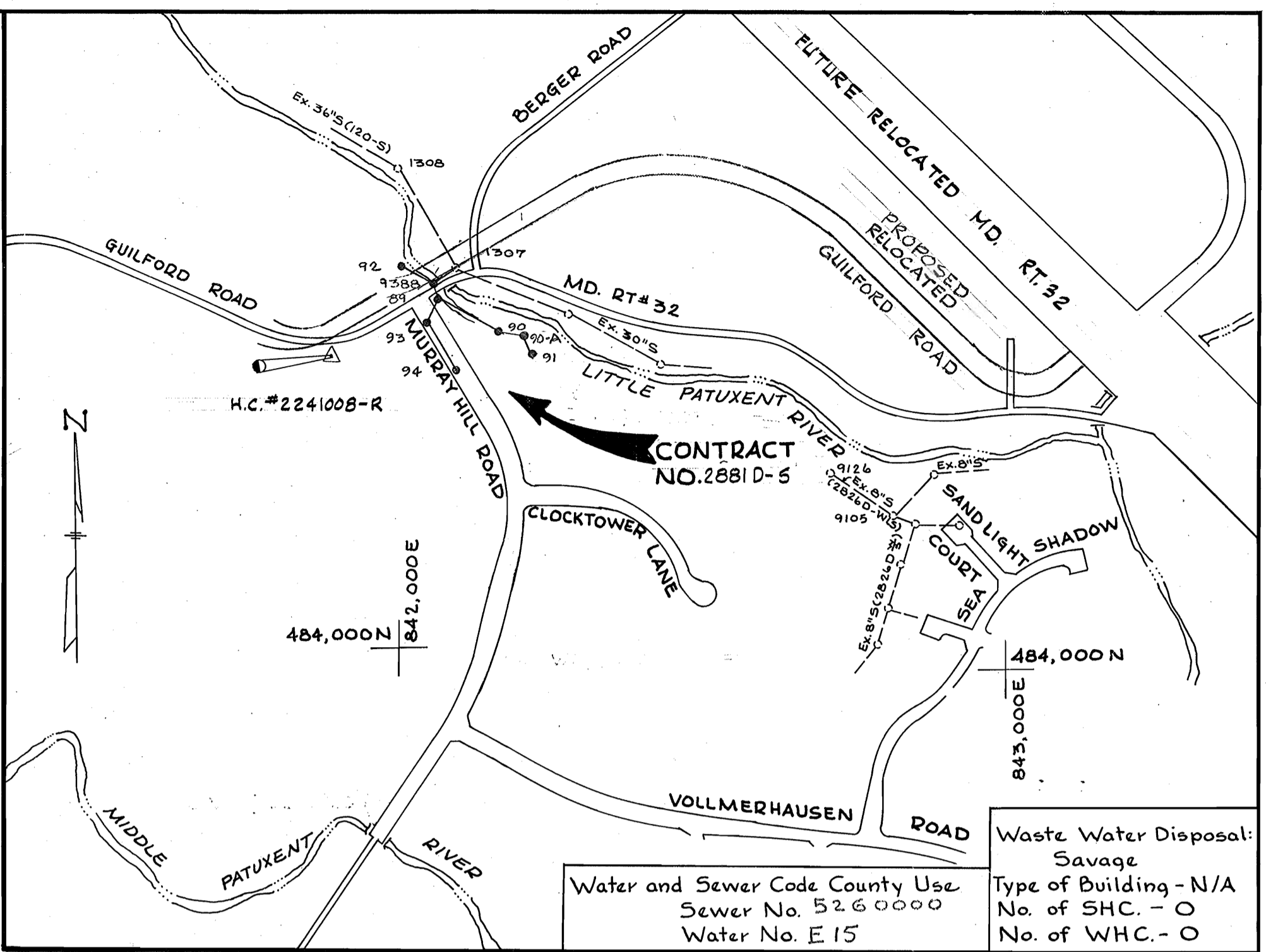


QUANTITIES			
ITEM	QTY	AS-BUILT	MATERIAL SUPPLIER
8" SEWER	1420 L.F.	1394 L.F.	Atlantic States DIP
MANHOLE	74 V.F.	73.95 V.F.	Atlantic Precast

BENCH MARKS
 H.C. B.M.#2241007 Elev. 268.979
 Concrete Monument 0.2' below Surface; see reference for location.
 H.C. B.M.#2241008-R Elev. 308.083
 Reinforcing Bar 0.3' below Surface, see reference for location.

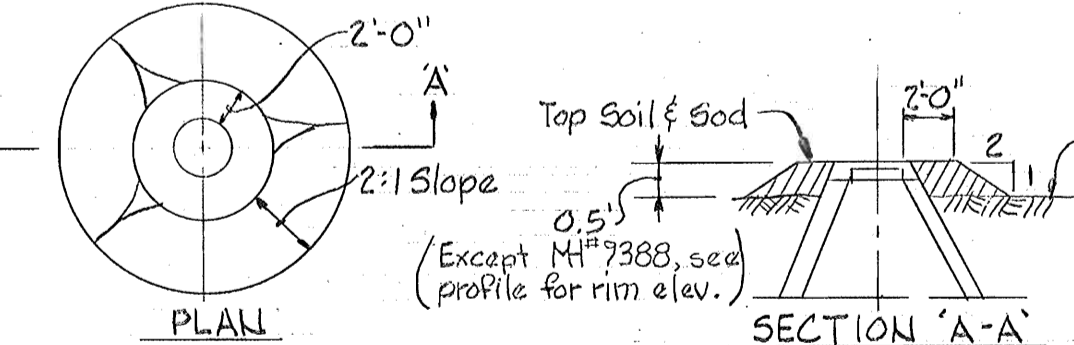
Sediment Control Notes
 1. No Spoil Mat's shall be stockpiled on stream side of Construction.
 2. Compaction of Backfill along with Stabilization will occur immediately after installation of pipeline.
 3. No debris or obstructions shall be left unstabilized in Floodplains or stream areas beyond the period of construction.
 4. Existing topsoil, grass and rootmat shall not be removed beyond the limits of French excavation.
 5. Contractor not to disturb existing embankment for Pond No. 1.



LOCATION MAP
 Scale: 1"=600'

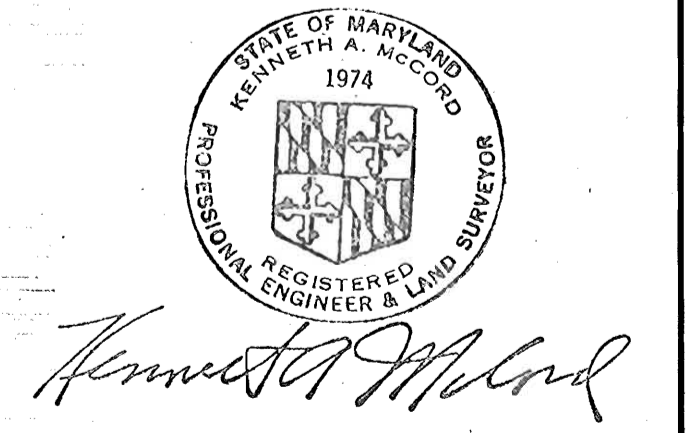
GENERAL NOTES

- APPROXIMATE LOCATION OF EXISTING MAINS ARE SHOWN. THE CONTRACTOR SHALL TAKE ALL NECESSARY PRECAUTIONS TO PROTECT EXISTING MAINS AND SERVICES AND MAINTAIN UNINTERRUPTED SUPPLY. ANY DAMAGE INCURRED SHALL BE REPAIRED IMMEDIATELY.
- ALL PIPE ELEVATIONS SHOWN ARE INVERT ELEVATIONS.
- THE CONTRACTOR SHALL LOCATE EXISTING UTILITIES A MINIMUM OF TWO WEEKS IN ADVANCE OF CONSTRUCTION OPERATIONS IN VICINITY OF UTILITIES.
- THE CONTRACTOR SHALL NOTIFY THE FOLLOWING UTILITIES OR AGENCIES AT LEAST FIVE DAYS BEFORE STARTING WORK SHOWN ON THESE PLANS.
 BALTIMORE GAS AND ELECTRIC COMPANY - UNDERGROUND ELECTRIC DISTRIBUTION ENGINEERING DAMAGE CONTROL 234-5691
 UNDERGROUND GAS DISTRIBUTION ENGINEERING 234-5621
 CHESAPEAKE AND POTOMAC TELEPHONE COMPANY 393-3648.
 MISS UTILITY - 1 - 559-0100
 STATE HIGHWAY ADMINISTRATION - 531-5533.
- ALL HORIZONTAL AND VERTICAL CONTROLS ARE BASED ON MARYLAND STATE DATUM.
- CLEAR ALL UTILITIES BY A MINIMUM OF 6".
- FOR ALL STANDARD DETAILS SEE STANDARDS BOUND IN SPECIFICATIONS.
- ALL SEWER MAINS SHALL BE C.S.P.X., V.C.P.X. OR A.C.P. CLASS 2400 UNLESS OTHERWISE NOTED.
- ALL MANHOLES SHALL BE 4'-0" INSIDE DIAMETER.
- THE CONTRACTOR SHALL PROVIDE A JOINT IN ALL SEWER MAINS WITHIN 2'-0" OF EXTERIOR MANHOLE WALLS.
- MANHOLES WITH 12" WALLS ARE FOR BRICK MANHOLES ONLY.
- TREES ARE TO BE PROTECTED FROM DAMAGE TO MAXIMUM EXTENT. TREES LOCATED WITHIN THE CONSTRUCTION STRIP ARE NOT TO BE REMOVED OR DAMAGED BY THE CONTRACTOR.
- MANHOLES DESIGNATED W.T. IN PROFILES SHALL HAVE WATER TIGHT FRAME AND COVERS.



FILL AROUND MANHOLES
 9338, 9390, 9391, 9392 & 9390-A
 Scale: 1/8"=1'-0"

Sediment Control Measures for this Contract will be implemented in accordance with Section 14 of the Specifications.
REVIEWED FOR HOWARD SOIL CONSERVATION DISTRICT AND MEETS TECHNICAL REQUIREMENTS
James M. Miller 8-22-80
 SIGNATURE DATE
U.S. SOIL CONSERVATION SERVICE
 This Development Plan is approved for Soil Erosion and Sediment Control by the Howard County Conservation District.
 APPROVED: *Robert J. Ziehn* 8-22-80 (HS-81-02)
 HOWARD C.D. DATE



Village of Kings Contrivance
 Section 3 Area 1
 Contract No. 2881D-5

DEPARTMENT OF PUBLIC WORKS
 HOWARD COUNTY, MARYLAND
James L. Ellis 8/23/80
 CHIEF-BUREAU OF UTILITIES - DATE
John K. ... 8/29/80
 CHIEF-BUREAU OF ENGINEERING - DATE

WHITMAN, REQUARDT & ASSOCIATES
 ENGINEERS
 1304 ST. PAUL ST.
 BALTIMORE, MARYLAND

DEPARTMENT OF PUBLIC WORKS
 HOWARD COUNTY, MARYLAND
James W. ... 8-22-80
 DIRECTOR OF PUBLIC WORKS - DATE
... 8/29/80
 CHIEF - LAND DEVELOPMENT DIVISION - DATE

CONTRACT NO. 2881D-S

PLAN AND PROFILES OF WATER AND SEWER MAINS

COLUMBIA VILLAGE OF KINGS CONTRIVANCE ELECTION DISTRICT GUILFORD NO.6

DRAWING NO. 1 OF 1 SCALE AS SHOWN

1/5 - 188 SM