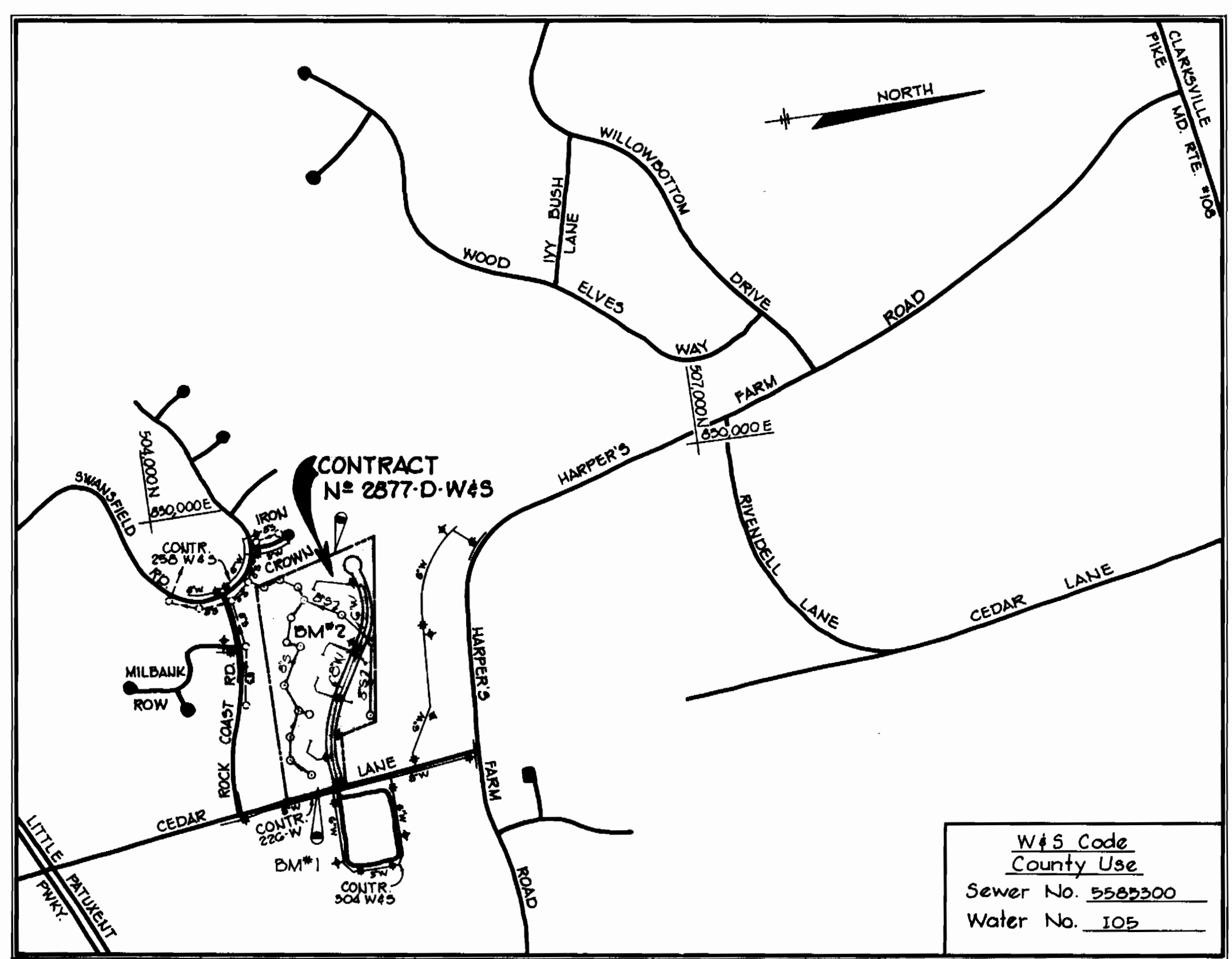
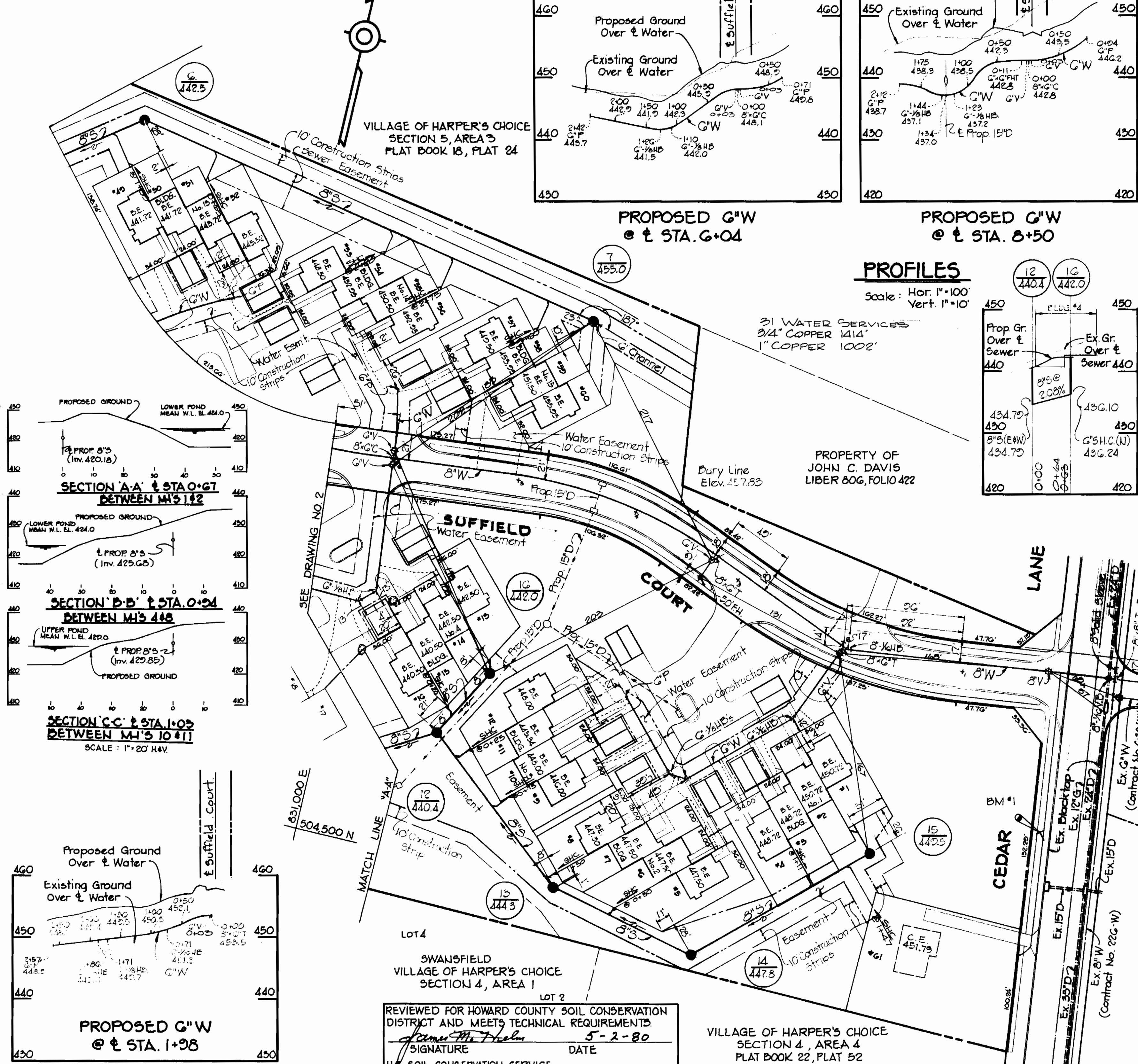


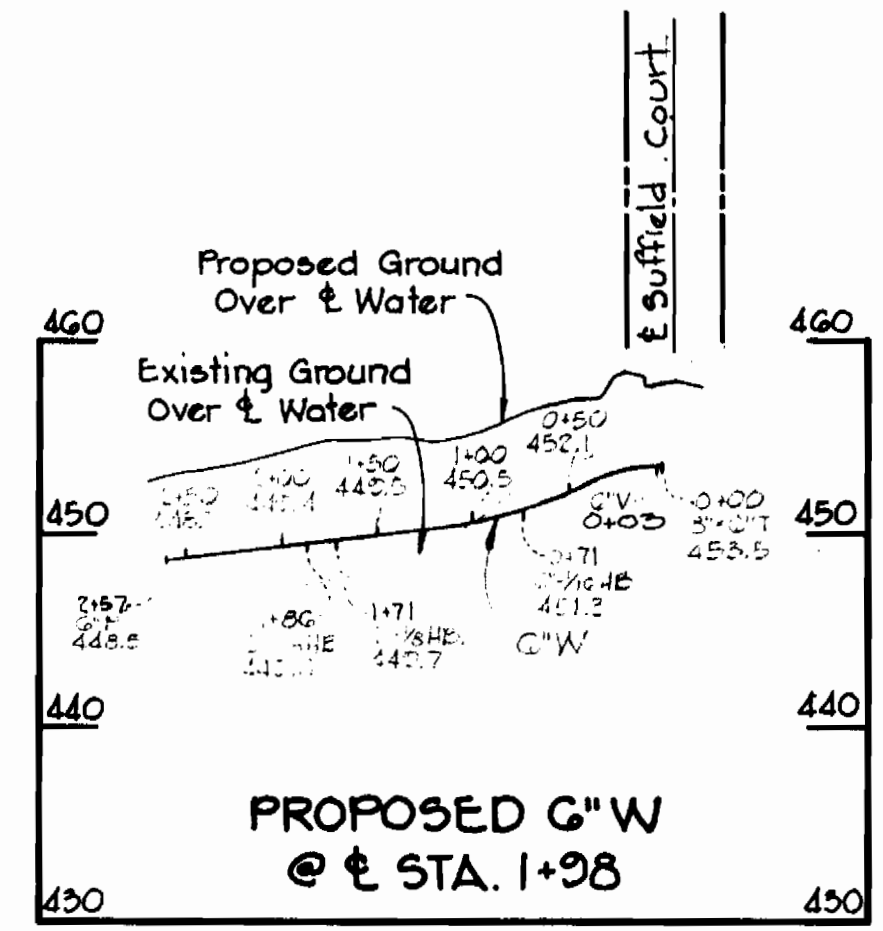
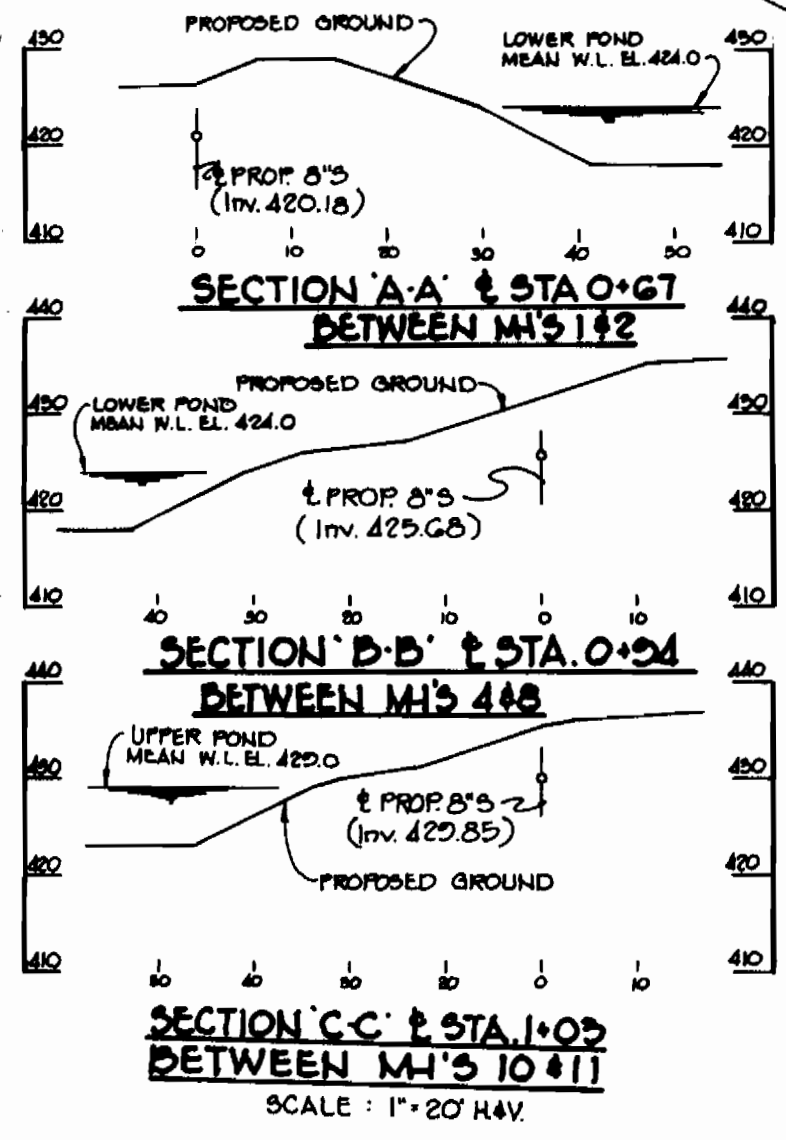
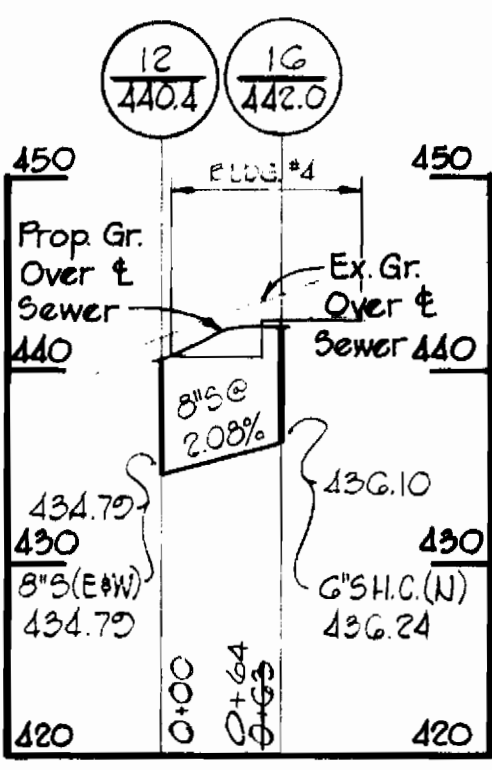
DM #1 Elev. 460.30
R.R. Spike in C+P Pble #2, West Side Cedar Lane 124' South of E Suffield Court.

DM #2 Elev. 461.20
High Point on rear of Stone Property Corner Coordinate Point #30 on Record Plat.



PROFILES

Scale: Hor. 1"=100'
Vert. 1"=10'



VICINITY MAP
SCALE: 1"=600'

W&S Code
County Use
Sewer No. 5582300
Water No. 105

GENERAL NOTES

- Approximate location of existing mains are shown. The Contractor shall take all necessary precautions to protect existing mains and services and maintain uninterrupted supply. Any damage incurred shall be repaired immediately.
- All horizontal controls are based on Maryland State Coordinates.
- All vertical controls are based on U.S.G.S. Datum.
- All pipe elevations shall be invert (I) elevations.
- Clear all utilities by a minimum of 6". Clear all poles by 2'-0" minimum or tunnel as required.
- For all standard details, see Standards bound in Specifications.
- The Contractor shall locate existing utilities in advance of construction operations in vicinity of proposed utilities.
- Trees are to be protected from damage to maximum extent. Trees located within the construction strip are not to be damaged.
- The Contractor shall remove trees, stumps and roots along line of excavation as directed by the Engineer.
- Place regulation "Men Working" and warning signs as required to comply with Maryland State Highway Administration Manual of Traffic Control for Highway Construction and Maintenance Operations.
- All water mains to be C.I.P. or D.I.P. unless otherwise noted.
- Top of water mains to have a minimum of 3/4" of cover unless otherwise noted.
- All valves shall be strapped to trees in accordance with standard details.
- Block all fittings with concrete, see standards bound in specifications.
- Bury line elevations on fire hydrants shall be set the elevations shown on the drawings. All fire hydrants shall be strapped and buttressed with concrete in accordance with standard details. Soil around the fire hydrant to be compacted in accordance with section 5-15 of the Standard Specifications.
- All water house connections shall have inside meter setting. (Installed by Others).
- All sewer mains shall be C.S.P.X., V.C.P.X. or A.C.P. Class 2400 unless otherwise noted.
- The contractor shall provide a joint in all sewer mains within 2'-0" of exterior manhole walls.
- All manholes shall be 4'-0" inside diameter, unless otherwise noted.
- Where sewer service connections enter manholes, inverts shall be channelized to accommodate flow.
- Profile stations shall be adjusted as necessary to conform to plan dimensions.

22. The contractor shall notify the following utilities or agencies at least five days before starting work shown on the plans.
- a) State Highway Administration 531-5535
 - b) Baltimore Gas and Electric Company 685-0123
 - 1) Customer Service 922-2366
 - c) Bureau of Utilities Howard County 725-2976
 - d) Chesapeake and Potomac Telephone Company 501-358-5553
 - e) American Telephone and Telegraph-Cable Location Division 701-4641
 - f) Colonial Pipeline Company

QUANTITIES

Item	Estimated	As Built	Material/Supplier
Fire Hydrants	3	3	M+H
6" Sewer	430	2380	JOHN MANNVILLE
Manholes	16	16	ALANTIC PRECAST
8" Water	880	870	GRIFFEN PIPE CO.
6" Water	1530	1540	GRIFFEN PIPE CO.
8" Valves	1	1	M+H
6" Valves (Excl. F.H. V's)	6	6	M+H

REVIEWED FOR HOWARD COUNTY SOIL CONSERVATION DISTRICT AND MEETS TECHNICAL REQUIREMENTS
 Signature: *James S. Fisher* DATE: 5-2-80
 U.S. SOIL CONSERVATION SERVICE
 THIS DEVELOPMENT PLAN IS APPROVED FOR SOIL EROSION AND SEDIMENT CONTROL BY HOWARD COUNTY CONSERVATION DISTRICT.
 APPROVED: *William J. Rowe* DATE: 5/2/80
 HOWARD S.C.D.

VILLAGE OF HARPER'S CHOICE SECTION 4, AREA 4 PLAT BOOK 22, PLAT 52

PLAN

SCALE: 1"=60'

Sediment Control for the construction hereon will be in accordance with the "Sediment Control Plan" of Scarborough (SDP-80-90)

DEPARTMENT OF PUBLIC WORKS
 HOWARD COUNTY, MARYLAND
 Director: *Wm. F. Neuman* DATE: 5-7-80
 Chief-Bureau of Engineering: *James S. Fisher* DATE: 5-5-80
 Chief-Bureau of Utilities: *James S. Fisher* DATE: 5/6/80

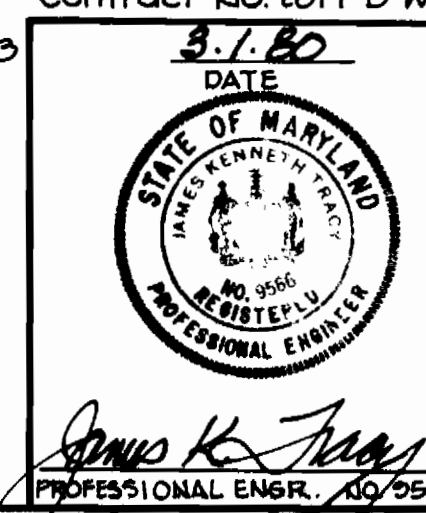
RIEMER-TRACY & ASSOCIATES, INC.
 8659 BALTIMORE NATIONAL PIKE
 ELLICOTT CITY, MARYLAND 21043
 LAND PLANNING, DESIGN & CIVIL ENGINEERING

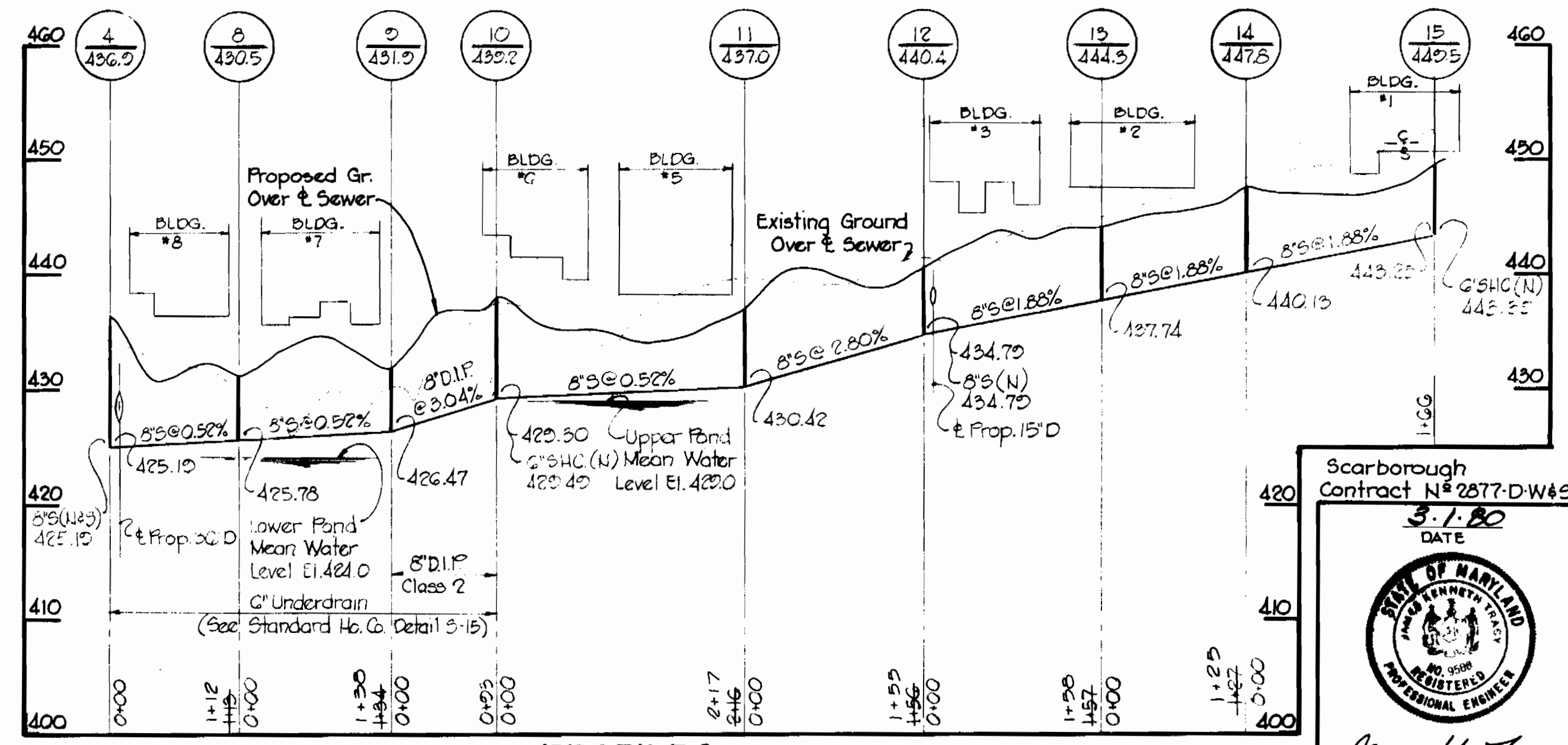
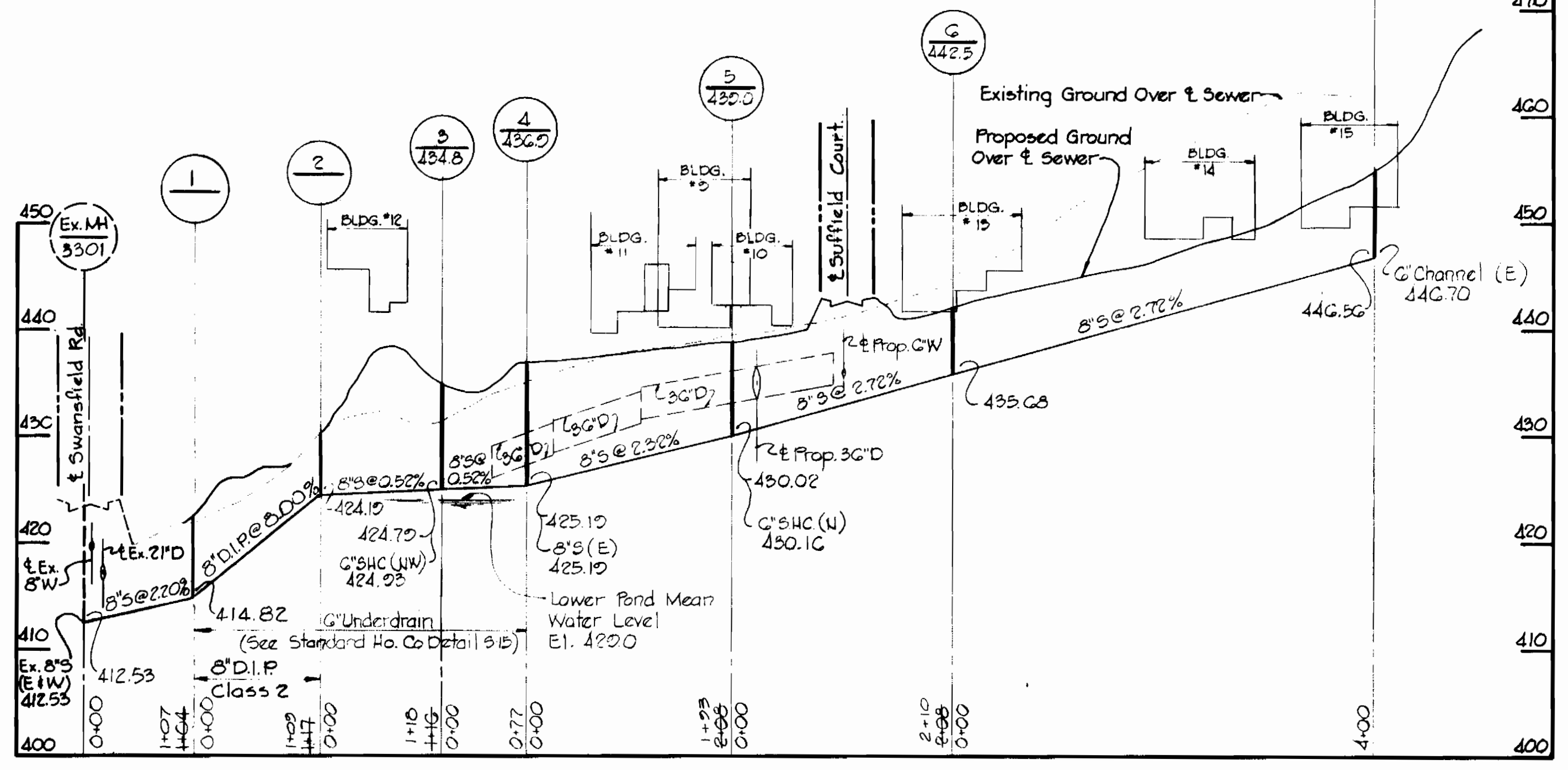
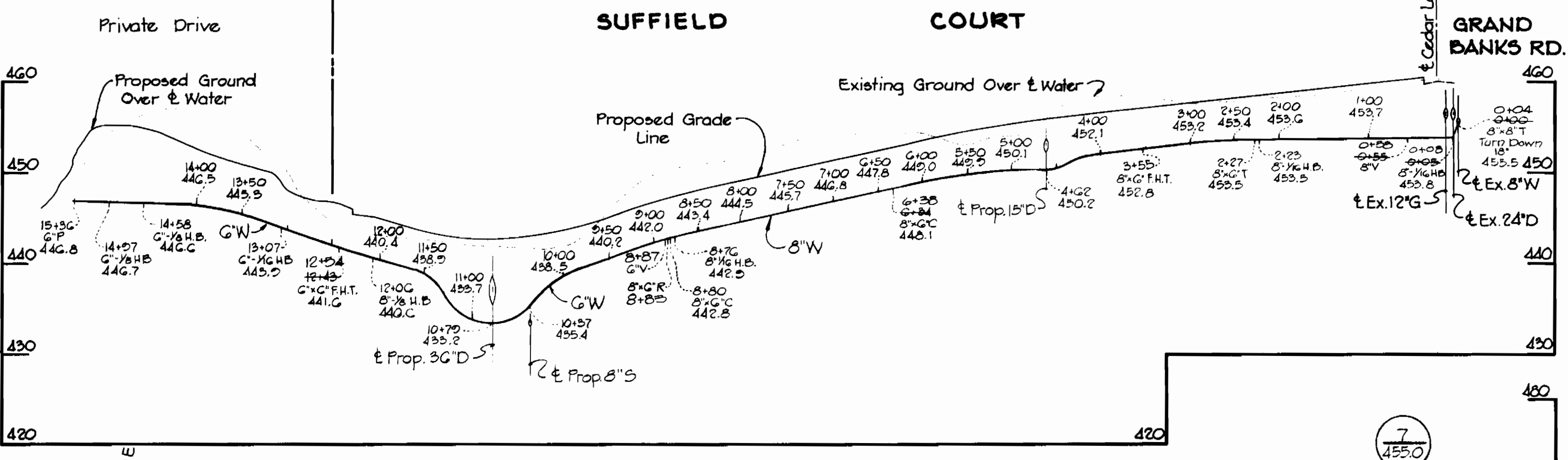
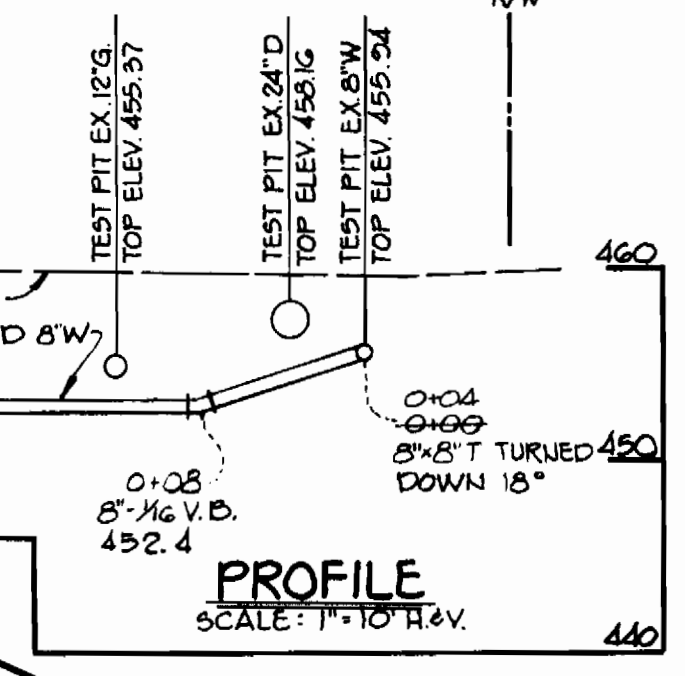
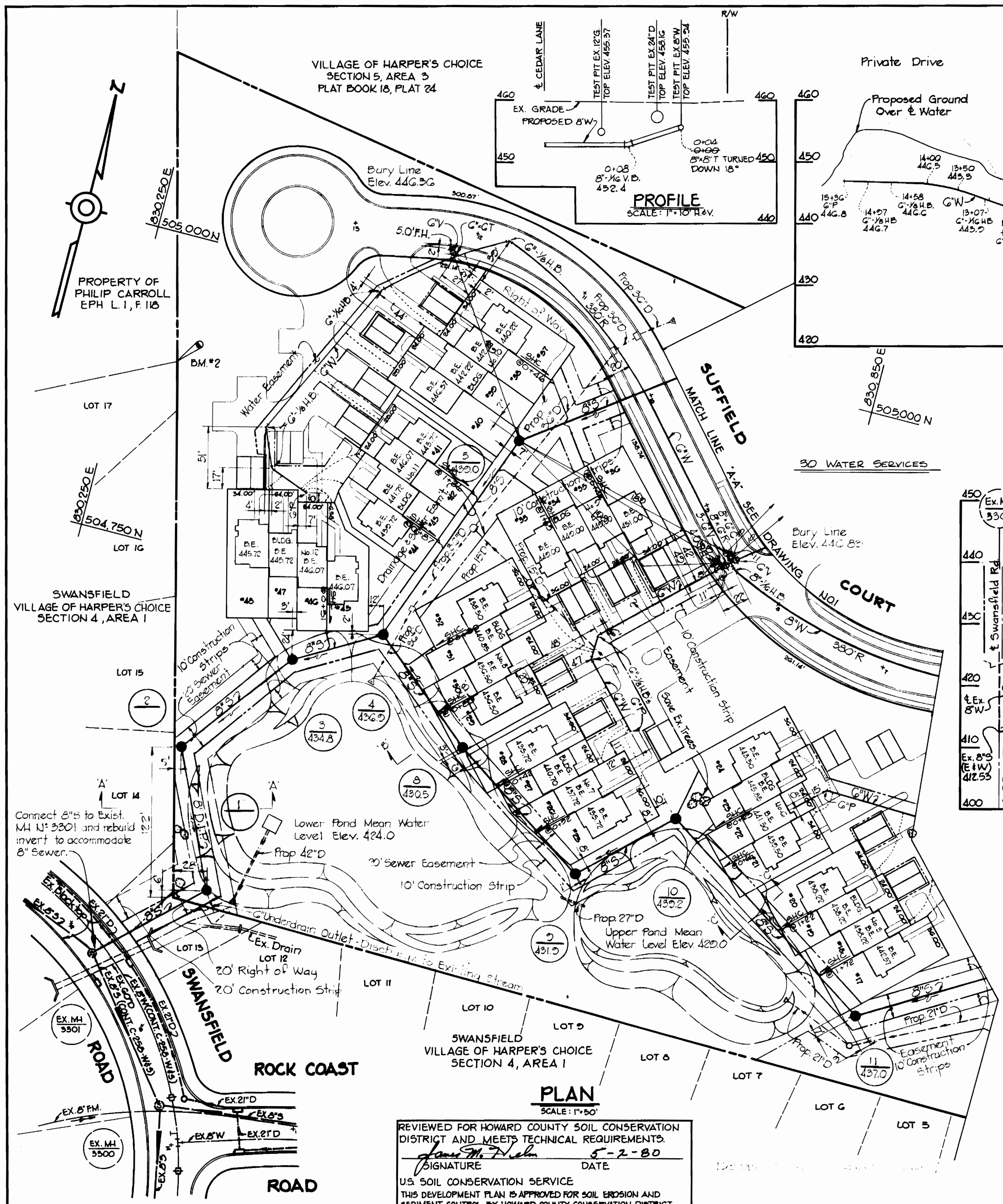
34
 CONTRACT NO. 2877-D-W&S

PLAN AND PROFILES
 WATER & SEWER MAINS

SCARBOROUGH
 ELECTION DISTRICT CLARKSVILLE NO. 5

DRAWING NO. 1 OF 2
 SCALE AS SHOWN





REVIEWED FOR HOWARD COUNTY SOIL CONSERVATION DISTRICT AND MEETS TECHNICAL REQUIREMENTS.
 SIGNATURE: *James M. Tracy* DATE: 5-2-80
 U.S. SOIL CONSERVATION SERVICE
 THIS DEVELOPMENT PLAN IS APPROVED FOR SOIL EROSION AND SEDIMENT CONTROL BY HOWARD COUNTY CONSERVATION DISTRICT.
 APPROVED: *William J. Hume* DATE: 5-6-80
 HOWARD S.C.D.

Sediment Control for the construction hereon will be in accordance with the "Sediment Control Plan" of Scarborough (SDP-80-90)

DEPARTMENT OF PUBLIC WORKS
 HOWARD COUNTY, MARYLAND
 DIRECTOR OF PUBLIC WORKS: *John F. Nunn* DATE: 5-7-80
 CHIEF-BUREAU OF ENGINEERING: *William J. Hume* DATE: 5-6-80
 CHIEF-BUREAU OF UTILITIES: *James L. Hume* DATE: 5/6/80

RIEMER-TRACY & ASSOCIATES, INC.
 8659 BALTIMORE NATIONAL PIKE
 ELLICOTT CITY, MARYLAND 21043
 LAND PLANNING, DESIGN & CIVIL ENGINEERING

CONTRACT NO. 2877-D-W&S

PLAN AND PROFILES
 WATER & SEWER MAINS

SCARBOROUGH
 ELECTION DISTRICT CLARKSVILLE NO.5

DRAWING NO. 2 OF 2
 SCALE AS SHOWN

Scarborough Contract No. 2877-D-W&S
 DATE: 3-1-80

 PROFESSIONAL ENGINEER NO. 10766