

**LOCATION MAP**  
SCALE: 1" = 600'

**WATER EXTENSION FOR GREENBRIAR WOODS**  
CONTRACT NO. 866-D-W

- GENERAL NOTES**
1. Approximate location of existing mains are shown. The contractor shall take all necessary precautions to protect existing mains and services and maintain uninterrupted supply. Any damage incurred should be repaired immediately.
  2. All horizontal controls are based on Maryland State Coordinates.
  3. All vertical controls are based on U.S.G.S. Datum.
  4. All pipe elevations shown are invert elevations.
  5. Clear all utilities by a minimum of 6". Clear all poles 2'-0" minimum or tunnel as required.
  6. For all standard details see standards bound in specifications.
  7. Contractor shall locate existing utilities in advance of construction operations in the vicinity of proposed utilities.
  8. Contractor shall notify the following utilities or agencies at least five (5) days before starting work shown on these plans:  
State Highway Administration - 631-5833  
Baltimore Gas and Electric Company - Underground Electric Distribution Engineering - "Bugs Control" - 234-5881  
Baltimore Gas and Electric Company - Underground Gas Distribution Engineering - 888-0380  
Chesapeake and Potomac Telephone Company - 726-9976  
American Telephone and Telegraph - Cable Location Division - 301-335-3863  
Catalina Pipeline Company - 281-4841
  9. Trees are to be protected from damage to maximum extent. Trees located within the construction strip are not to be removed or damaged by the contractor.
  10. Contractor shall remove trees, stumps and roots along line of excavation as directed by the Engineer. Payment for such removal shall be included in the unit price bid for excavation and backfill for water mains.
  11. Please regulate "Man Working" and warning signs as required to comply with Maryland State Highway Administration Manual of Traffic Control for Highway Construction and Maintenance Operations.
  12. All water mains to be D.I.P.
  13. Top of all water mains to have a minimum of 3-1/2' cover unless otherwise noted.
  14. All valves shall be strapped to trees in accordance with standard details.
  15. Block all fittings with concrete, see standards bound in specifications.

**WATER MAIN LOCATION**

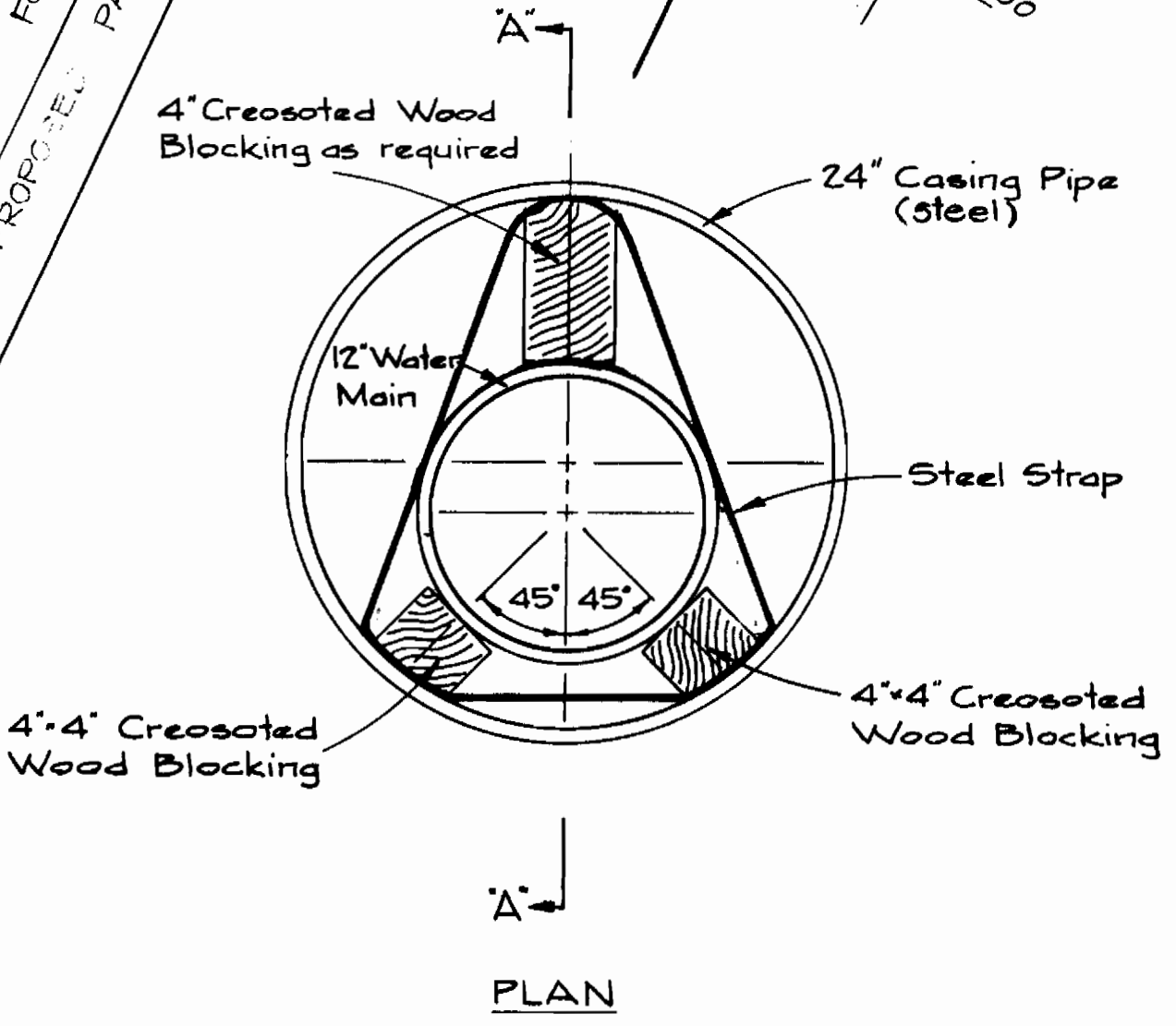
Water Main Point	± Water Main Sta.	Description	Traverse Station	Offset from Traverse Station
1	0+00	Limit of Contract	6+85.21	46.58' Rt.
2	0+55	12" 1/2 B	7+39.10	58.25' Rt.
3	7+54	12" 1/8 B	13+33.96	119.29' Rt.
4	7+64	12" 1/8 B	13+41.28	126.27' Rt.
5	12+97	4" Deflection	18+73.73	113.66' Rt.
6	14+18	12" 1/8 B	20+48.28	6896' Rt.
7	15+79	12" 1/8 B	22+17.48	72.97' Rt.
8	19+84	12" 1/8 B	26+89.87	215.25' Rt.
9	22+85	12" 1/2 B	28+81.02	140.95' Rt.
10	23+46	± Water Main	30+41.90	137.21' Rt.

BM.#2142002  
N 480974.972 E 851954.261 Elev. 260.334  
Station 2142002 is a rebar set 0.2' below the surface, 3.91' east of the edge of pavement of Rte. 32. Also being located 16.30' from a 12" Oak Tree and 64.05' from the corner of house #9959.

BM.#4 Elev. 294.12  
Bench Mark #4 is the top of iron pipe set @ T.P.#4. See traverse tie for location description.

BM.#14 Elev. 311.64  
Bench Mark #14 is the top of iron pin in concrete monument at Northwest property corner of the Howard Research and Development Corporation Property, 9.5' ± east of T.P. 14.

BM.#16 Elev. 269.91  
Bench Mark #16 is the top of railroad spike in 36" Poplar Tree located on the east side of Guilford Road - Md. Rte. 32, approximately 140' ± north of existing fire hydrant, 843' north of T.P. 16 and in the front yard of house #9933.



**QUANTITIES**

ITEM	BID	AS BUILT	MATERIAL/SUPPLIER
12" WATER	2346 L.F.	2345 L.F.	D.I.P. Flow Industries
24" SLEEVE	213 L.F.	213 L.F.	
12" VALVE	2 EA.	2	
AIR VALVE + MH	1 EA.	1	

**DEPARTMENT OF PUBLIC WORKS**  
HOWARD COUNTY, MARYLAND  
*James S. Gray*  
CHIEF-BUREAU OF UTILITIES DATE *8-9-79* CHIEF-BUREAU OF ENGINEERING

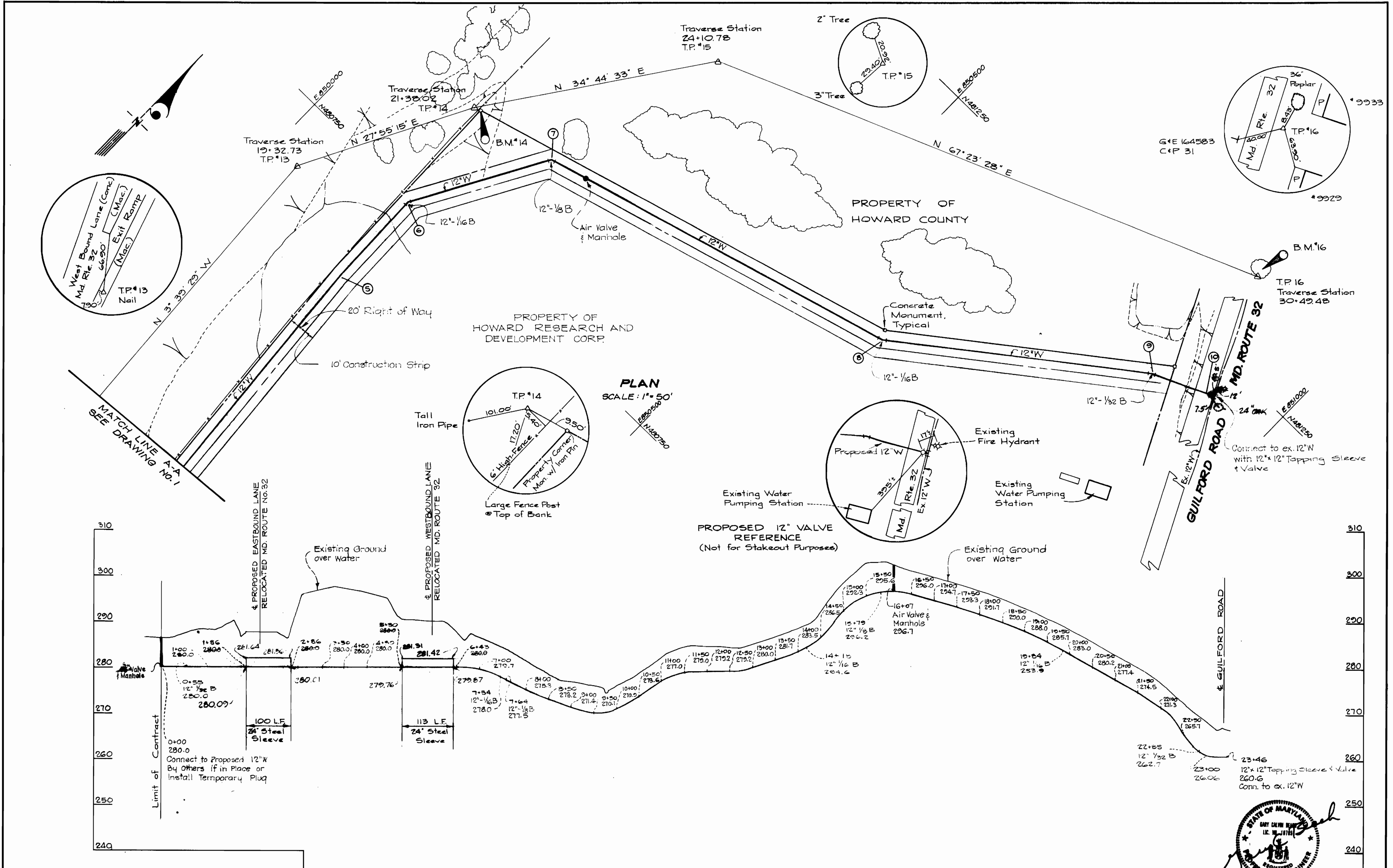
**DEPARTMENT OF PUBLIC WORKS**  
HOWARD COUNTY, MARYLAND  
*Donny F. Nummy*  
DIRECTOR OF PUBLIC WORKS - DATE *8-10-79*

CONTRACT NO. **866-D-W**

**PLAN OF WATER MAIN**

**WATER EXTENSION FOR GREENBRIAR WOODS**  
6TH ELECTION DISTRICT HOWARD COUNTY, MARYLAND

DRAWING NO. 1 OF 2 SCALE As Shown



DEPARTMENT OF PUBLIC WORKS  
 HOWARD COUNTY, MARYLAND  
 James L. [Signature] 8-9-79  
 CHIEF - BUREAU OF UTILITIES DATE CHIEF - BUREAU OF ENGINEERING DATE

DEPARTMENT OF PUBLIC WORKS  
 HOWARD COUNTY, MARYLAND  
 [Signature] 8-10-79  
 DIRECTOR OF PUBLIC WORKS - DATE

CONTRACT NO. 866-D-W

PLAN AND PROFILE  
 OF WATER MAIN

WATER EXTENSION FOR  
 GREENBRIAR WOODS  
 6TH. ELECTION DISTRICT HOWARD COUNTY, MARYLAND

DRAWING NO. 2 OF 2  
 SCALE As Shown  
 AS BUILT APRIL, 1979



CONTRACT NO. 866-D-W  
 WATER EXTENSION FOR  
 GREENBRIAR WOODS