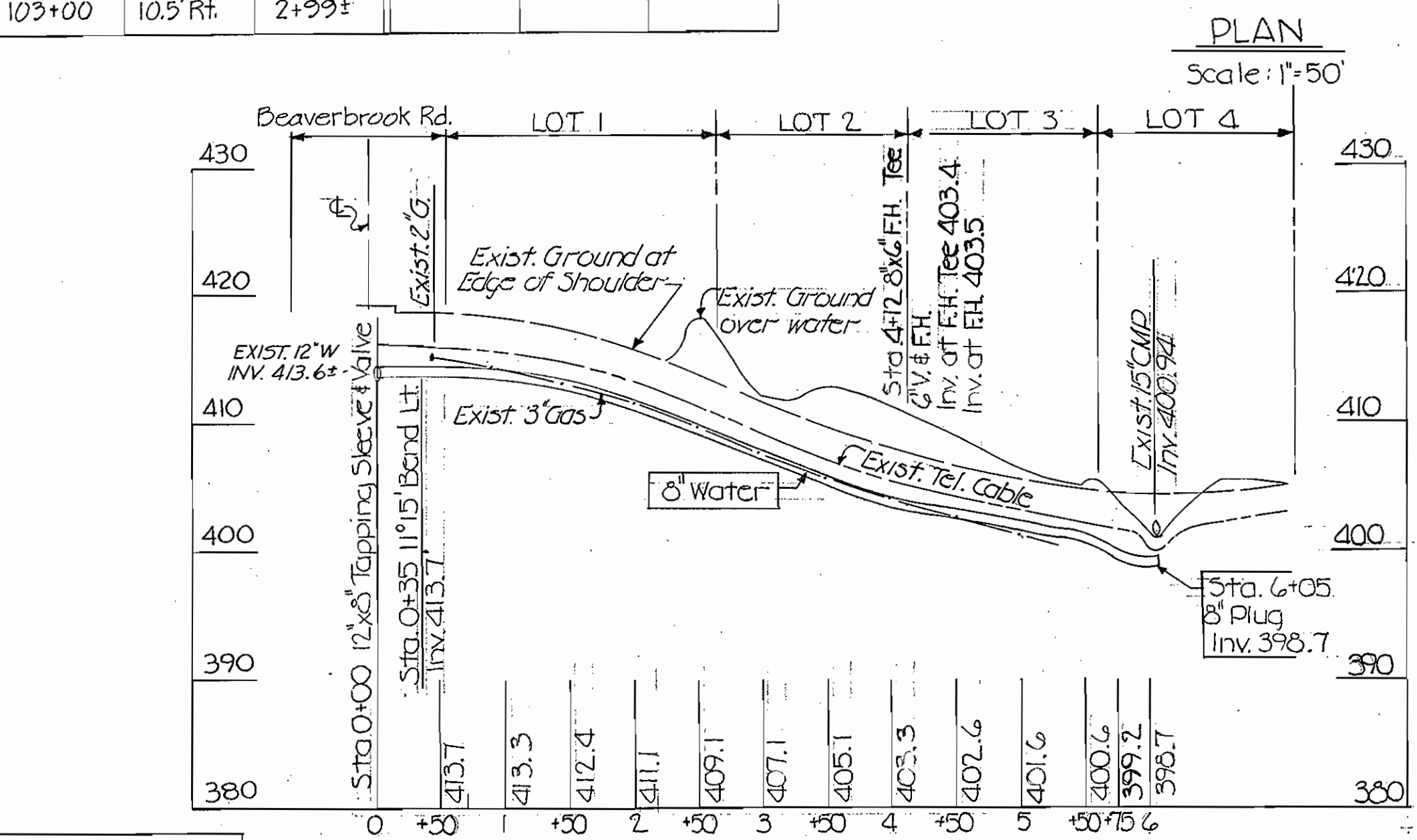


D.M. No. 1^a Cut on back edge of curb
 Rt. Sta. 100+10 ± Survey
 Elev. 418.652
 D.M. No. 2 Boat Spike in South Side
 Clarksville Pike Opposite C&P Pole #167 1/2
 Elev. 406.030

Sta. 0+00
 12"x8" Tapping
 Sleeve & Valve

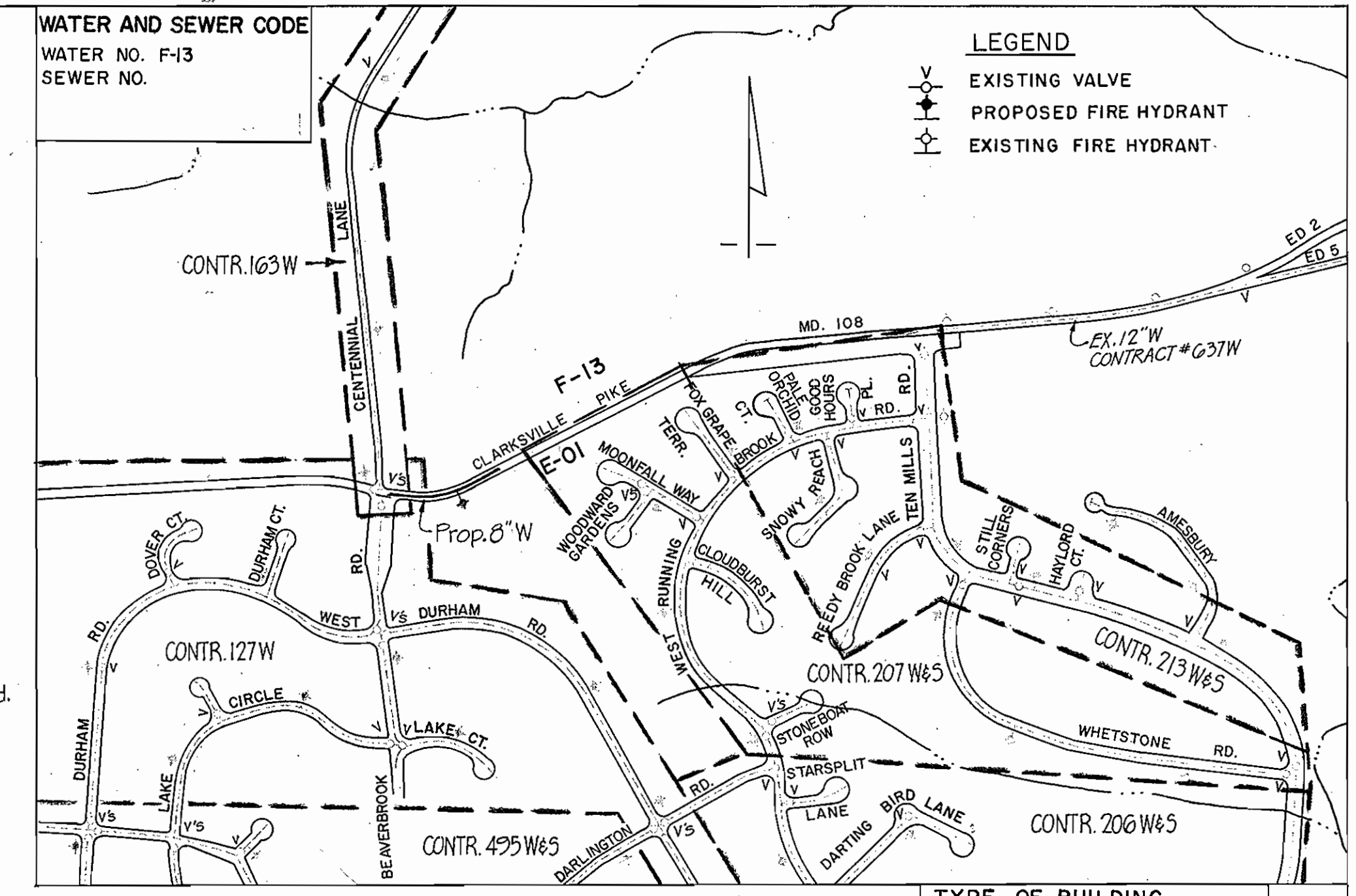
CONSTRUCTION STAKEOUT DATA					
SVY. STA.	OFFSET	WATER STA.	SVY. STA.	OFFSET	WATER STA.
100+39.5	24.5' Rt.	0+35 ±	103+50	16.5' Rt.	3+49
100+50	23.5' Rt.	0+46.5 ±	104+00	20.5' Rt.	4+00
101+00	19' Rt.	0+97 ±	104+50	21.5' Rt.	4+50
101+50	18' Rt.	1+47 ±	105+00	20.5' Rt.	5+00
102+00	8' Rt.	1+98.5 ±	105+50	19' Rt.	5+50
102+22.00	0' Rt.	1+21 ±	106+00	18' Rt.	6+00
102+50	4.5' Rt.	2+49 ±			
103+00	10.5' Rt.	2+99 ±			

Maintain 3' Min. horizontal clearance between exist. 3" Gas main & new 8" water between Sta. 0+45 and Sta. 3+00



QUANTITIES	AS BUILT	SUPPLIER
8" Water	605 L.F.	605 L.F. GRIFFIN PIPE CO.
6" Water	5 L.F.	5 L.F. GRIFFIN PIPE CO.
Fire Hydrants	1	1 FLOW INDUSTRIES
3/4 Cooper Water Service	30 L.F.	30 L.F. FLOW INDUSTRIES

PROFILE
 Scale: Horiz. 1"=100
 Vert. 1"=10'



VICINITY MAP
 Scale 1"=600'

TYPE OF BUILDING	
NO. OF WHC	3
NO. OF SHC	N/A
WASTE WATER DISPOSAL	N/A

GENERAL NOTES

- Approximate locations of existing mains are shown. The contractor shall take all the necessary precautions to protect the existing mains and services and maintain uninterrupted supply. Any damage incurred due to the contractor's operations shall be repaired immediately at the contractor's expense.
- All pipe elevations shown are invert elevations.
- The contractor shall locate existing utilities a minimum of two weeks in advance of construction operations in the vicinity of proposed utilities.
- For all standard details see standards bound in specifications.
- Clear all utilities by a minimum of 6". Clear all utility poles by 2'-0" or tunnel as required. Any costs incurred to the contractor for tunneling or bracing at poles shall be included in unit prices bid for excavation.
- Contractor shall notify the following utilities or agencies at least five (5) days before starting work shown on these plans:
 State Highway Administration - 531-5533
 Baltimore Gas & Electric Company - Underground Electric Distribution Engineering - "Damage Control" - 234-5691
 Baltimore Gas & Electric Company - Underground Gas Distribution Engineering - 559-0100
 Chesapeake & Potomac Telephone Company - 725-9976
 Miss Utility - 393-3648
- Trees are to be protected from damage to maximum extent. Trees located within the construction strip are not to be removed or damaged by the contractor.
- Place regulation "Men Working" and warning signs as required to comply with Maryland State Highway Administration manual of Traffic Control for Highway Construction and Maintenance operations.
- All water mains to be C.I.P., D.I.P. or A.C.P. unless otherwise noted.
- Top of all water mains to have a minimum of 3'-6" cover unless otherwise noted.
- All valves shall be strapped to tees, where applicable, in accordance with standard details.
- Buttress or anchor all water main fittings with concrete. See Standard details bound in the Specifications.
- Bury line elevations on fire hydrants shall be set to the elevations shown on the drawings. All fire hydrants shall be strapped and buttressed with concrete in accordance with standard details. Soil around the fire hydrant to be compacted in accordance with Section 5-15 of the Standard Specifications.
- Cost of strapping fire hydrants and valves to be included in the unit price bid for furnishing and installing fire hydrants.
- All horizontal controls are based on Maryland State Coordinates.
- All vertical controls are based on USC & GS Datum.
- Contractor shall remove trees, stumps and roots along line of excavation as directed by the Engineer. Payment for such removal shall be included in the unit price bid for excavation and backfill for water mains.



THE WILSON T. BALLARD COMPANY
 CONSULTING ENGINEERS
 OWINGS MILLS MARYLAND

DEPARTMENT OF PUBLIC WORKS
 HOWARD COUNTY, MARYLAND
 Director: F. Murray
 Chief - Bureau of Engineering: W. O. Salber

PROJECT NO. (858-W)
 W-7-8072
 PHASE II

PLAN AND PROFILE
 OF 8" WATER MAIN

CLARKSVILLE PIKE WATER MAIN
 FROM CENTENNIAL LANE 600 FEET EASTERLY
 ELECTION DISTRICT NO. 2

CLARKSVILLE PIKE
 PROJECT NO. W-4-8072
 PHASE II
 CONTRACT NO. 858-W
 DRAWING NO. 1
 SCALE AS SHOWN