

Hickory Ridge
Section 1, Area 5

Note:
Offset MH 9267
Frame and Cover
toward South.

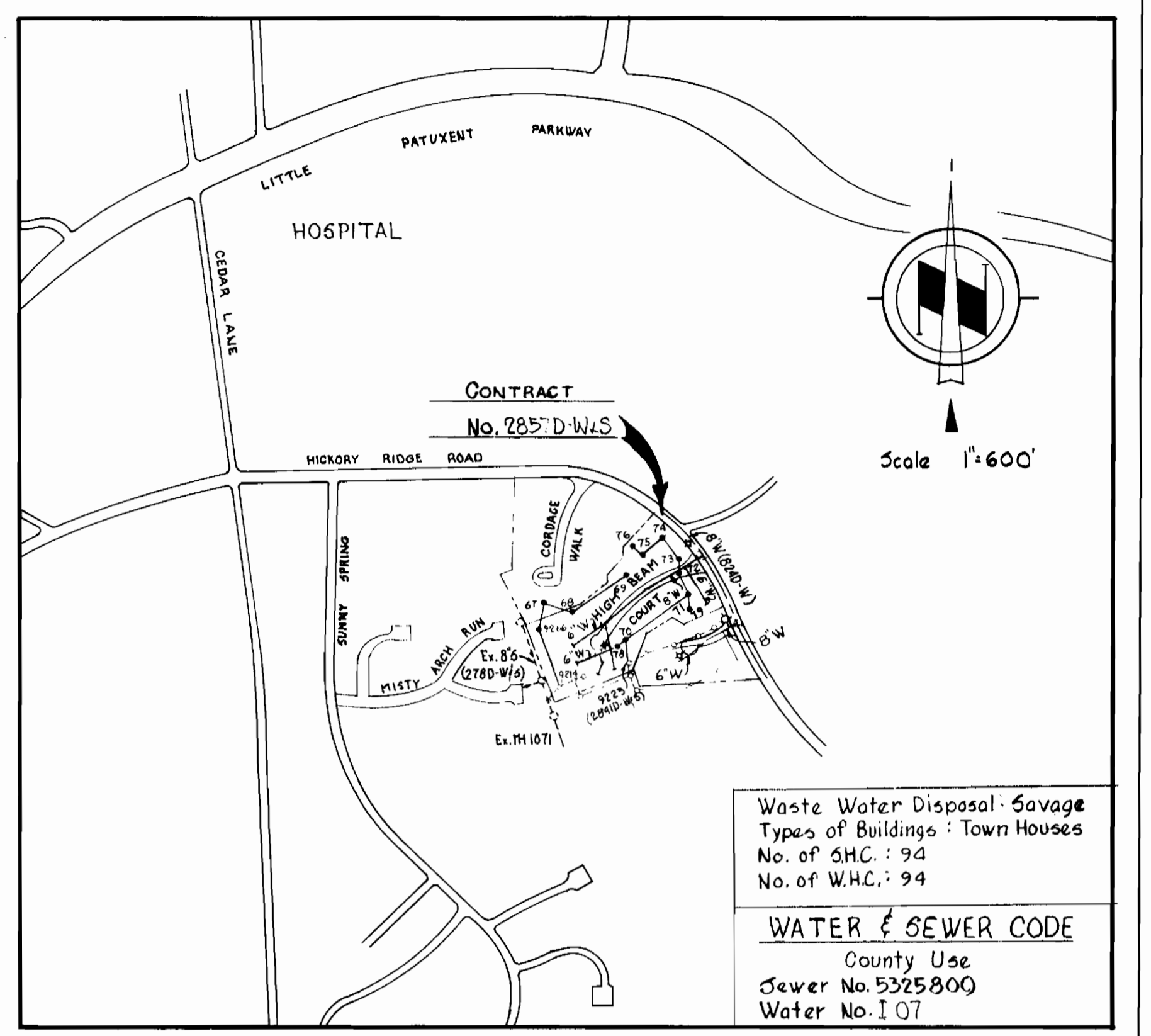
BENCH MARKS

- W.R.A. B.M. F-9 Elev. 419.21
a-cut on NE corner Headwall between
lots 22 & 23, at NE Property Line, Hickory
Ridge, Section 1, Area 5.
- W.R.A. B.M. F-10 Elev. 411.02
a-cut on NE corner Headwall between
lots 13 & 14, at NE Property Line, Hickory
Ridge, Section 1, Area 5.
- W.R.A. B.M. F-11 Elev. 433.26
a-cut top Pipe, 26' Right of Sta. 19+80
Hickory Ridge Road.

PLAN
Scale: 1" = 50'

QUANTITIES			
ITEM	BID	AS BUILT	MATERIAL / SUPPLIER
8" Sewer	1,800 LF.	1,799 LF.	JOHN MANSVILLE
Manholes	95 V.F.	85 50V.F.	ATLANTIC
8" Water	480 LF.	514 LF.	GRIFFIN
6" Water	1,450 LF.	1,443 LF.	"
Fire Hydrants	1	1	M&H DRESSER

NOTE:
This sheet shows Water As-Built only,
see sheet 2 of 2 for Sewer As-Built



LOCATION MAP
SCALE: 1" = 600'

GENERAL NOTES

- APPROXIMATE LOCATION OF EXISTING MAINS ARE SHOWN. THE CONTRACTOR SHALL TAKE ALL NECESSARY PRECAUTIONS TO PROTECT EXISTING MAINS AND SERVICES AND MAINTAIN UNINTERRUPTED SUPPLY. ANY DAMAGE INCURRED SHALL BE REPAIRED IMMEDIATELY.
- ALL PIPE ELEVATIONS SHOWN ARE INVERT ELEVATIONS.
- THE CONTRACTOR SHALL LOCATE EXISTING UTILITIES A MINIMUM OF TWO WEEKS IN ADVANCE OF CONSTRUCTION OPERATIONS IN VICINITY OF UTILITIES.
- THE CONTRACTOR SHALL NOTIFY THE FOLLOWING UTILITIES OR AGENCIES AT LEAST FIVE DAYS BEFORE STARTING WORK SHOWN ON THESE PLANS:
BALTIMORE GAS AND ELECTRIC COMPANY - UNDERGROUND ELECTRIC DISTRIBUTION ENGINEERING DAMAGE CONTROL 234-6691
UNDERGROUND GAS DISTRIBUTION ENGINEERING 234-5621
CHEESAPEAKE AND POTOMAC TELEPHONE COMPANY 383-3648.
MISS UTILITY - 1 - 559-0100
- FOR ALL STANDARD DETAILS SEE STANDARDS BOUND IN SPECIFICATIONS.
- ALL HORIZONTAL AND VERTICAL CONTROLS ARE BASED ON MARYLAND STATE DATUM.
- CLEAR ALL UTILITIES BY A MINIMUM OF 6".
- BLOCK ALL FITTINGS WITH CONCRETE, SEE STANDARDS BOUND IN SPECIFICATIONS.
- ALL WATER MAINS SHALL HAVE A MINIMUM OF 24" COVER.
- ALL WATER MAINS SHALL BE C.I.P., D.I.P. OR A.C.P. UNLESS OTHERWISE NOTED.
- ALL VALVES SHALL BE STRAPPED TO TEES WHERE APPLICABLE IN ACCORDANCE WITH THE STANDARD DETAILS.
- ALL FIRE HYDRANTS SHALL BE STRAPPED AND BUTTRESSED IN ACCORDANCE WITH THE STANDARD DETAILS. SOIL AROUND THE HYDRANTS SHALL BE COMPACTED IN ACCORDANCE WITH SECTION 5-15 OF THE STANDARD SPECIFICATIONS.
- PAYMENTS FOR STRAPPING FIRE HYDRANTS AND VALVES WILL BE INCLUDED IN UNIT PRICE BID FOR FURNISHING AND LAYING WATER MAINS.
- BURY LINE ELEVATIONS ON FIRE HYDRANTS SHALL BE SET TO THE ELEVATIONS SHOWN ON THE DRAWINGS.
- ALL W.N.C.'S SHALL BE 3/4" DIAMETER UNLESS OTHERWISE NOTED.
- WATER SERVICES SHALL BE FOR INSIDE METER SETTINGS.
- ALL SEWER MAINS SHALL BE C.S.P.X., V.C.P.X. OR A.C.P. CLASS 2400 UNLESS OTHERWISE NOTED.
- ALL MANHOLES SHALL BE 4'-0" INSIDE DIAMETER.
- THE CONTRACTOR SHALL PROVIDE A JOINT IN ALL SEWER MAINS WITHIN 2'-0" OF EXTERIOR MANHOLE WALLS.
- TREES ARE TO BE PROTECTED FROM DAMAGE TO MAXIMUM EXTENT. TREES LOCATED WITHIN THE CONSTRUCTION STRIP ARE NOT TO BE REMOVED OR DAMAGED BY THE CONTRACTOR.



Howard F. Newman

Hickory Ridge
Section 1, Area 6
Phase II
Lots C-40 thru C-134
Contract No. 2857D-Wfs

WHITMAN, REQUARDT & ASSOCIATES
ENGINEERS
1304 ST. PAUL ST.
BALTIMORE, MARYLAND

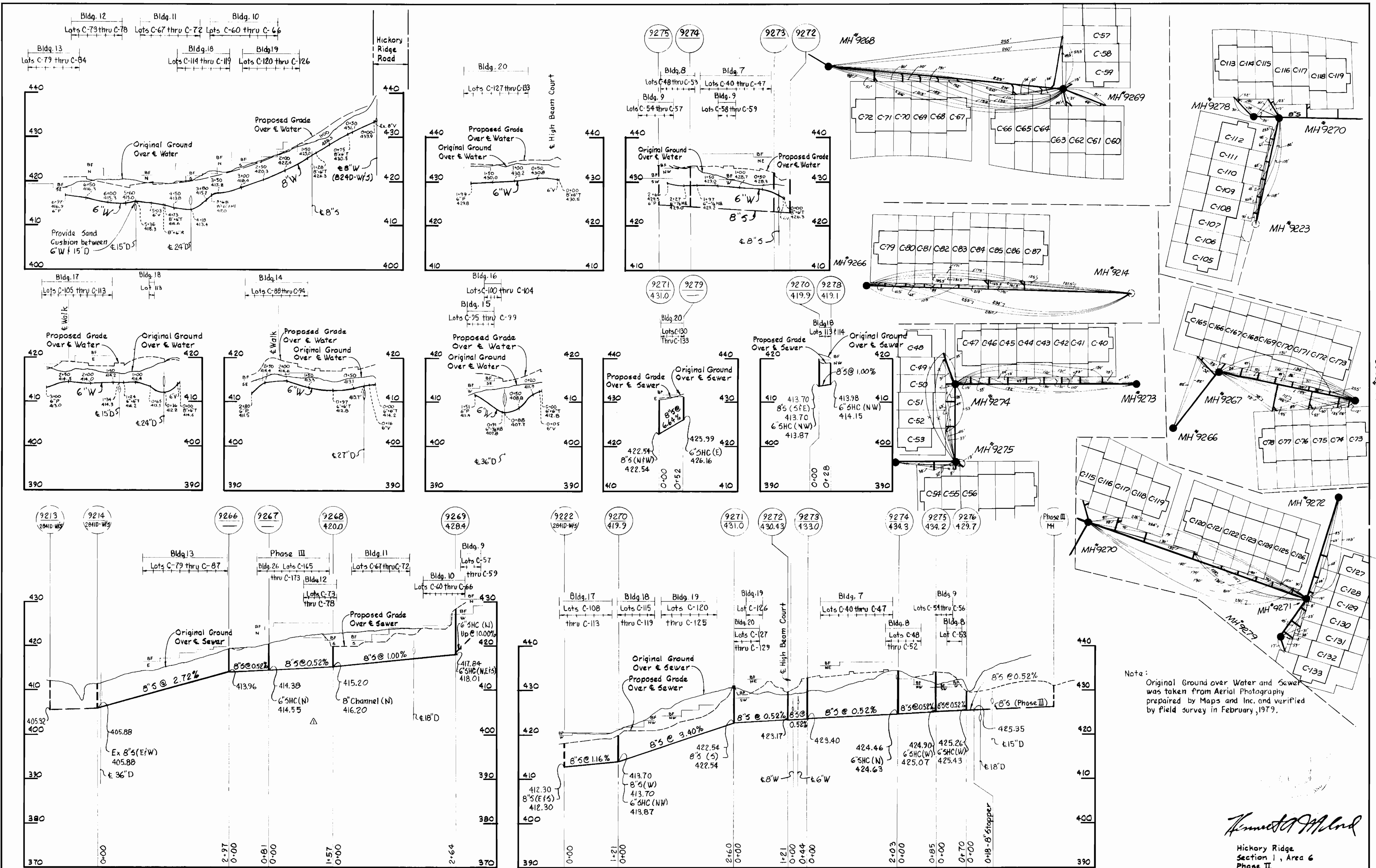
DEPARTMENT OF PUBLIC WORKS
HOWARD COUNTY, MARYLAND
5-14-79
DIRECTOR OF PUBLIC WORKS DATE

CONTRACT NO. 2857D-W8S

PLAN OF WATER & SEWER DRAINS

COLUMBIA VILLAGE OF HICKORY RIDGE ELECTION DISTRICT - CLARKSVILLE NO. 5

DRAWING NO. 1 OF 2 SCALE AS SHOWN



Note: Original Ground over Water and Sewer was taken from Aerial Photography prepared by Maps and Inc. and verified by field survey in February, 1979.

Kenneth A. McLeod

Hickory Ridge
Section I, Area 6
Phase II
Lots C-40 thru C-134
Contract No. 2857D-W/S

WHITMAN, REQUARDT & ASSOCIATES ENGINEERS 1304 ST. PAUL ST. BALTIMORE, MARYLAND	DEPARTMENT OF PUBLIC WORKS HOWARD COUNTY, MARYLAND 5-14-79 DIRECTOR OF PUBLIC WORKS - DATE	CONTRACT NO. 2857D-W/S 5-14-79 CHIEF BUREAU OF ENGINEERING - DATE	REVISION No. DATE		PROFILES OF WATER & SEWER MAINS	COLUMBIA VILLAGE OF HICKORY RIDGE ELECTION DISTRICT - CLARKSVILLE NO. 5	DRAWING NO. 2 OF 2	SCALE H: 1"=100' V: 1"=10'
			Δ 5-11-79 No. DATE	Revised MH's 9267 & 9268 No. DATE				