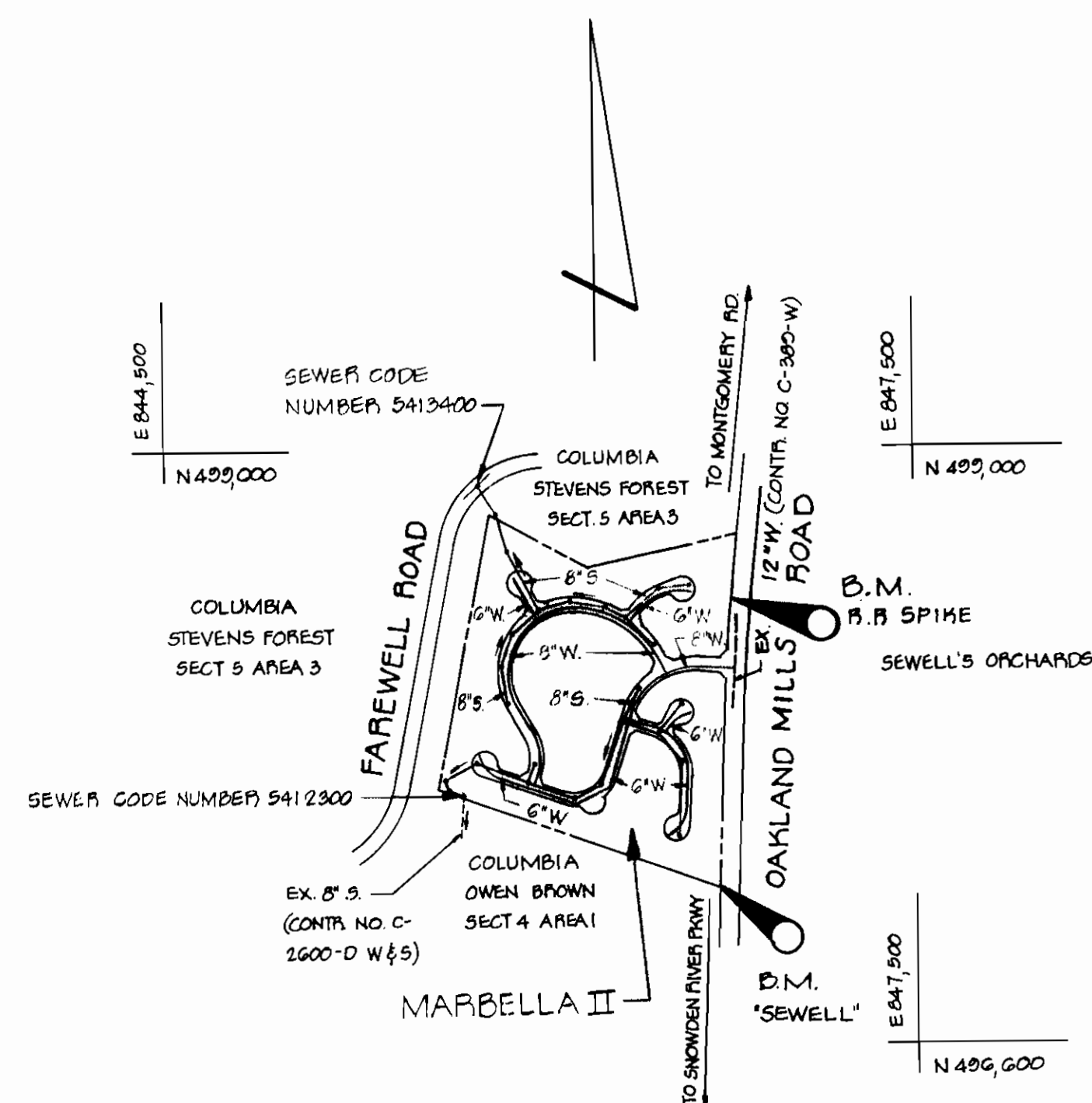


**GENERAL NOTES**

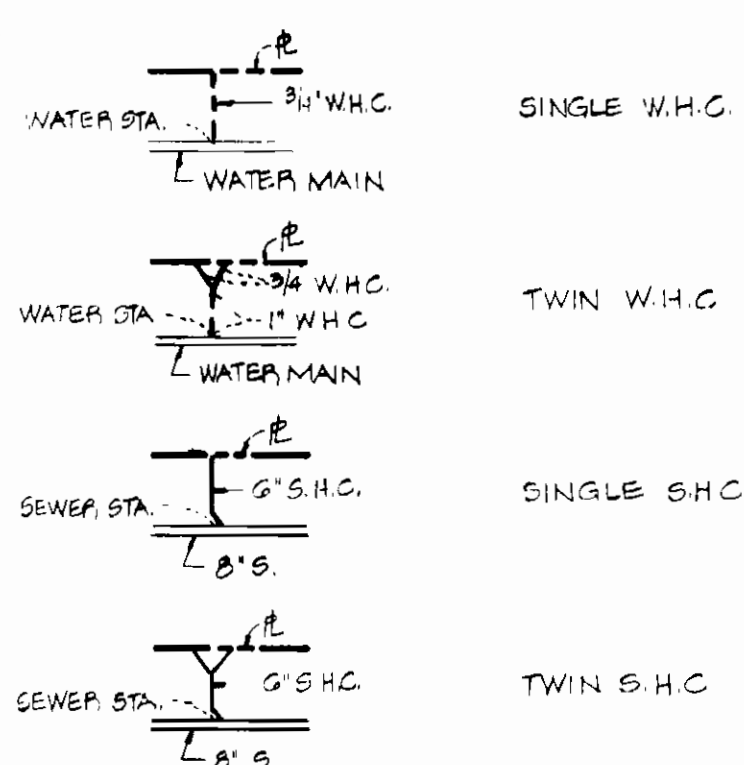
- APPROXIMATE LOCATIONS OF EXISTING MAINS ARE SHOWN. THE CONTRACTOR SHALL TAKE ALL NECESSARY PRECAUTIONS TO PROTECT THE EXISTING MAINS AND SERVICES AND MAINTAIN UNINTERRUPTED SERVICE. ANY DAMAGE INCURRED SHALL BE REPAIRED IMMEDIATELY.
- ALL PIPE ELEVATIONS SHOWN ARE INVERT ELEVATIONS.
- THE CONTRACTOR SHALL LOCATE EXISTING UTILITIES A MINIMUM OF TWO WEEKS IN ADVANCE OF CONSTRUCTION OPERATIONS IN VICINITY OF UTILITIES.
- FOR ALL STANDARD DETAILS, SEE STANDARDS BOUND IN SPECIFICATIONS.
- CLEAR ALL UTILITIES BY A MINIMUM OF 6', CLEAR ALL POLES BY A MINIMUM OF 2'-0" OR TUNNEL AS REQUIRED.
- ALL WATER MAINS SHALL BE C.I.P., D.I.P. OR ASBESTOS CEMENT UNLESS OTHERWISE NOTED AND HAVE A MINIMUM OF 3.5' COVER.
- BLOCK ALL FITTINGS WITH CONCRETE, SEE STANDARDS BOUND IN SPECIFICATIONS.
- BURY LINE ELEVATIONS ON FIRE HYDRANTS SHALL BE SET TO ELEVATION SHOWN ON DRAWINGS.
- ALL FIRE HYDRANTS SHALL BE STRAPPED AND BUTTRESSED IN ACCORDANCE WITH STANDARD DETAILS. SOIL AROUND THE FIRE HYDRANTS SHALL BE COMPACTED IN ACCORDANCE WITH SECTION 5-15 OF THE STANDARD SPECIFICATIONS.
- ALL VALVES SHALL BE STRAPPED TO TEES WHERE APPLICABLE IN ACCORDANCE WITH THE STANDARDS BOUND IN SPECIFICATIONS.
- COST OF STRAPPING FIRE HYDRANTS AND VALVES TO TEES IS TO BE INCLUDED IN THE UNIT PRICE BID FOR FURNISHING AND LAYING OF WATER MAIN.
- WATER SERVICES SHALL BE FOR INSIDE METER SETTING.
- ALL SEWER MAINS SHALL BE C.S.P.X., V.C.P.X. OR ASBESTOS CEMENT CLASS 2400 UNLESS OTHERWISE NOTED.
- ALL MANHOLES SHALL BE 4'-0" INSIDE DIAMETER.
- THE CONTRACTOR SHALL PROVIDE A JOINT IN ALL SEWER MAINS WITHIN 2'-0" OF EXTERIOR MANHOLE WALLS.
- MINIMUM CELLAR ELEVATIONS SHOWN ARE THE MINIMUM ELEVATIONS WHICH CAN BE SERVED BY SEWER MAINS.
- ELEVATIONS ARE BASED UPON MARYLAND STATE DATUM. COORDINATE VALUES SHOWN ON DRAWINGS ARE IN THE MARYLAND STATE GRID SYSTEM.
- THE CONTRACTOR SHALL NOTIFY THE FOLLOWING UTILITIES OR AGENCIES AT LEAST FIVE (5) DAYS BEFORE STARTING WORK SHOWN ON THESE PLANS.  
BALTIMORE GAS AND ELECTRIC COMPANY  
UNDERGROUND ELECTRIC 234-5001  
UNDERGROUND GAS 550-0100  
C AND P TELEPHONE COMPANY 727-0976  
MISS UTILITY 303-3048
- TWIN W.H.C. SHALL BE COMPOSED OF 1" COPPER FROM THE CORPORATION TO THE "Y" BRANCH AND 3/4" COPPER TO EACH CURB SERVICE BOX. SEE STANDARD W-50 BOUND IN SPECIFICATIONS. CURB STOPS TO BE SET 5' OFF OF PROPERTY CORNERS.



**VICINITY MAP**  
SCALE: 1" = 600'

WATER AND SEWER CODE
SEWER 5412300, 5412400
WATER 600

**LEGEND**



NOTE:  
TWIN W.H.C. SHALL BE COMPOSED OF 1" COPPER FROM THE CORPORATION TO THE "Y" BRANCH AND 3/4" COPPER TO EACH CURB SERVICE BOX. SEE STANDARD W-50 BOUND IN SPECIFICATIONS. CURB STOPS TO BE SET 5' OFF OF LOT PROPERTY CORNERS.

**CONTRACT NO. 2854 - D - W & S  
MARBELLA II  
DEPARTMENT OF PUBLIC WORKS - HOWARD COUNTY, MD.**

**BENCH MARKS**

B.M. MONUMENT "SEWELL" ELEV. 40321  
CONCRETE MONUMENT - BRONZE DISC  
ON TOP. 25' ± LEFT OF & OAKLAND  
MILLS ROAD (WEST SIDE) ALONG  
SOUTH PROPERTY LINE.

B.M. R.R. SPIKE, SIDE OF B.G. & E. ELEV. 41175  
POLE # 169272

**QUANTITIES**

ITEM	SIZE	QUANTITY	AS BUILT	MATERIAL / SUPPLIER
SEWER	8"	3964 LF	3814 LF	JOHNS MANVILLE
WATER	8"	2224 LF	2256 LF	GRIFFIN PIPE
WATER	6"	1916 LF	1923 LF	GRIFFIN PIPE
M.H.	24	EACH	26 EQ.	CONC. PIPE & PRODUCTS CO.
VALVE	8"	2 EACH	2 EQ.	MEH VALVE & FITTING CO.
VALVE	6"	6 EACH	6 EQ.	" " " " " "
PIPE HYD.	7"	EACH	7 EQ.	" " " " " "
M.H.	0		0	" " " " " "

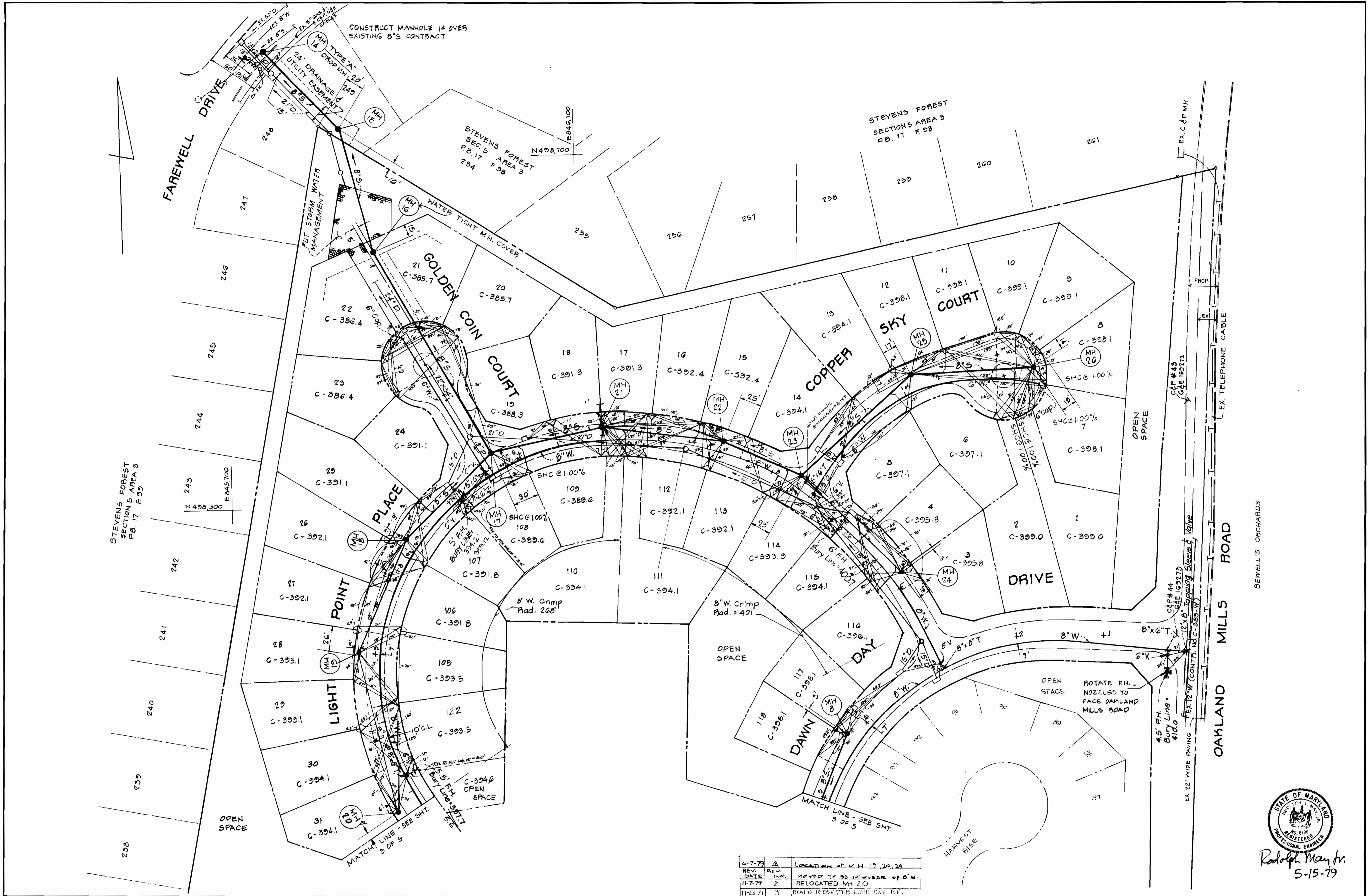
TYPE OF BUILDINGS	SINGLE FAMILY (WELLING)
NUMBER OF LOTS	112
NUMBER OF WATER HOUSE CONNECTIONS	712
NUMBER OF SEWER HOUSE CONNECTIONS	112
DRAINAGE AREA	LITTLE FATUENT



*Rodolph May Jr.*  
5-15-79

2854-D-W&S

<b>BOENDER ASSOCIATES, INC.</b> ENGINEERS, PLANNERS, SURVEYORS BALTIMORE, MD. SALISBURY, MD. 465-7777 749-1286	DEPARTMENT OF PUBLIC WORKS <i>Henry F. Nummy</i> 6-5-79 DIRECTOR OF PUBLIC WORKS - DATE <i>W. J. Nummy</i> 6-4-79 CHIEF, BUREAU OF ENGINEERING - DATE	CONTRACT NO. <b>2854-D-W&amp;S</b>	COVER SHEET	ELECTION DISTRICT NO. 6	DRAWING NO. 1 OF 5	SCALE AS SHOWN	DES: P.L.M. DRW: J.J.D. CHK: P.L.M.



6-7-79	1	LOCATION OF M.H. 19, 20, 24
11-7-79	2	MOVED TO BE 10' NEAR OF 8\"/>
11-24-79	3	REALIGN SEWER LINE ON L.F.F.



Rodolph May Jr.  
5-15-79

<b>BOENDER ASSOCIATES, INC.</b> ENGINEERS, PLANNERS, SURVEYORS BALTIMORE, MD. 445-7777 SALISBURY, MD. 749-1285	DEPARTMENT OF PUBLIC WORKS <i>John F. Nunn</i> 6-5-79 DIRECTOR OF PUBLIC WORKS - DATE <i>W. J. Albert</i> 6-4-79 CHIEF, BUREAU OF ENGINEERING - DATE	CONTRACT NO. 854-D-W8S	PLAN VIEW WATER AND SEWER MAINS	ELECTION DISTRICT NO. 6	DRAWING NO. 2 OF 5	SCALE AS SHOWN DES: P.L.M. DRW: WHN CHK: P.L.M.
---	--	------------------------	------------------------------------	-------------------------	-----------------------	---



**PLAN**  
SCALE: 1" = 50'

VILLAGE OF OWEN BROWN  
SECTION 4 AREA 1  
P.B. 27 F. 74 & F. 75

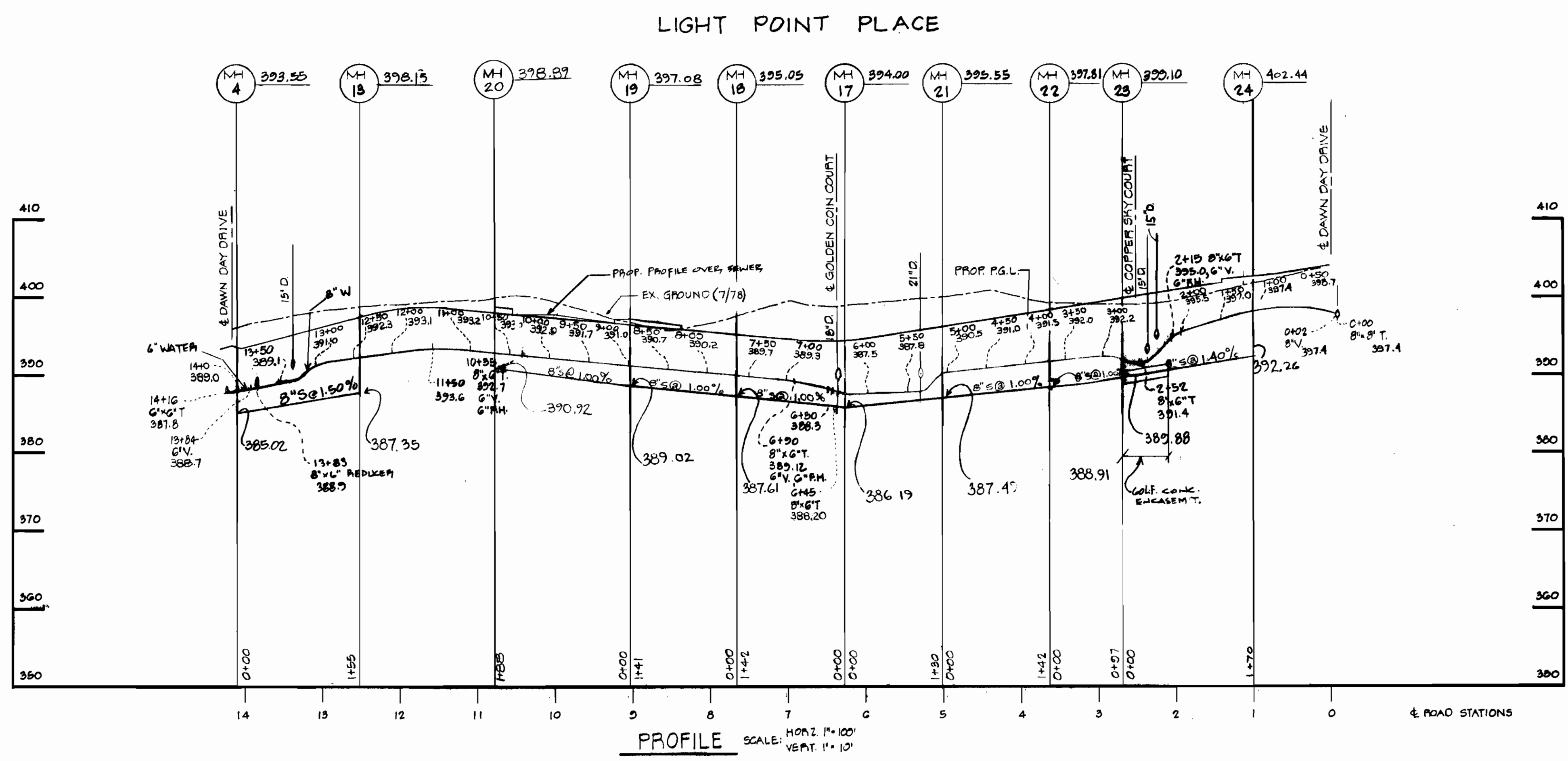
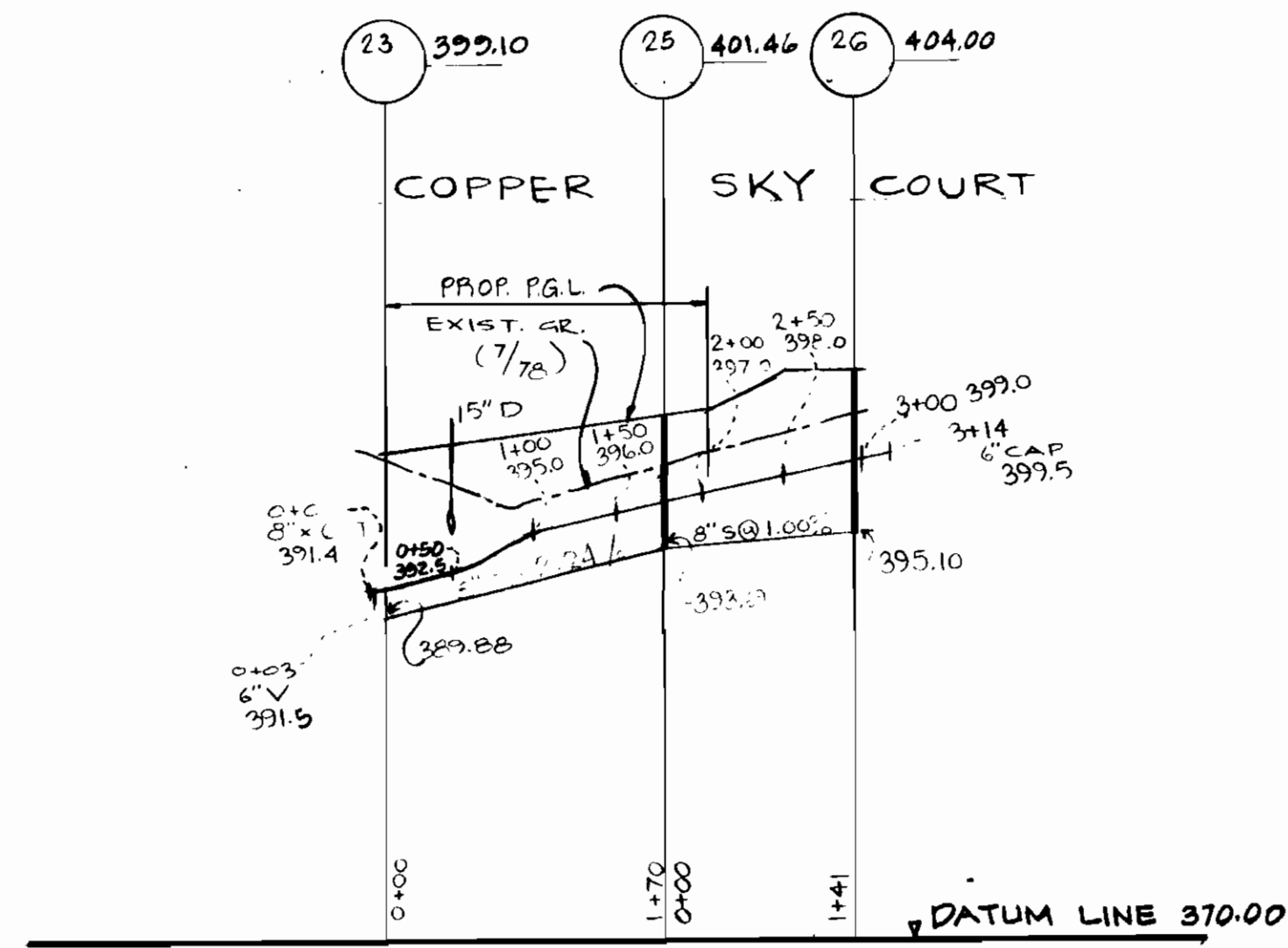
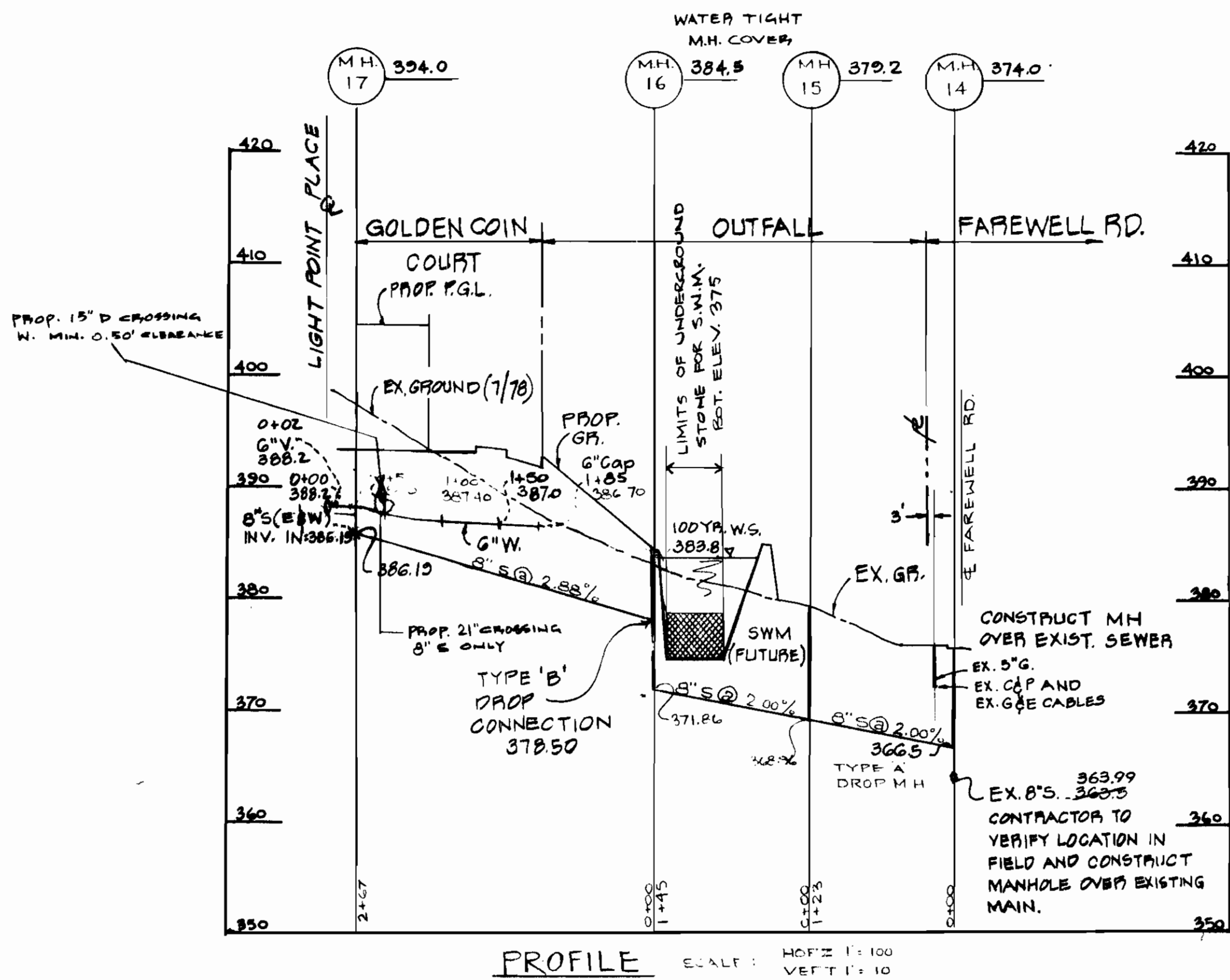
VILLAGE OF OWEN BROWN  
SECTION 4 AREA 1  
P.B. 27 F. 74

REMOVE EX. 8" PLUG  
AND CONNECT TO EX. 8" SEWER  
EX. 8" PLUG - 2' OFF R INV. 376.91  
EX. 8" SEWER (CONTR. NO. C-2600-D W&S.)  
EX. 20' SEWER EASEMENT



7-10-79	REV. DATE	ENLARGED 60' OF 8" SEWER LINE IN CONCRETE	6-7-79	REV. DATE	REVISED LOC. OF M.H. 13	11-7-79	4	ADDED LOT 121
						10-17-79	3	REVISED LOC. OF M.H. 2 & 3

<b>BOENDER ASSOCIATES, INC.</b> ENGINEERS, PLANNERS, SURVEYORS BALTIMORE, MD. 485-7777 SALISBURY, MD. 749-1286	DEPARTMENT OF PUBLIC WORKS <i>W. F. N...</i> 6-5-79 DIRECTOR OF PUBLIC WORKS - DATE	<i>W. O. ...</i> 6-4-79 CHIEF, BUREAU OF ENGINEERING - DATE	CONTRACT NO. <b>1854-D-W&amp;S</b>	<b>PLAN VIEW</b> WATER AND SEWER MAINS	ELECTION DISTRICT NO. 6	DRAWING NO. <b>3 OF 5</b>	SCALE AS SHOWN	DES: P.L.M. DRW: W.H.N. CHK: P.L.M.



REV. DATE	REV. NO.	DESCRIPTION
11-7-79	3	CHANGE LOCATION OF MH 20
6-7-79	Δ	CHANGED RIM ELEV. MH. 12
		INSERTED 15" STEEL DRAIN AT M.H. 17

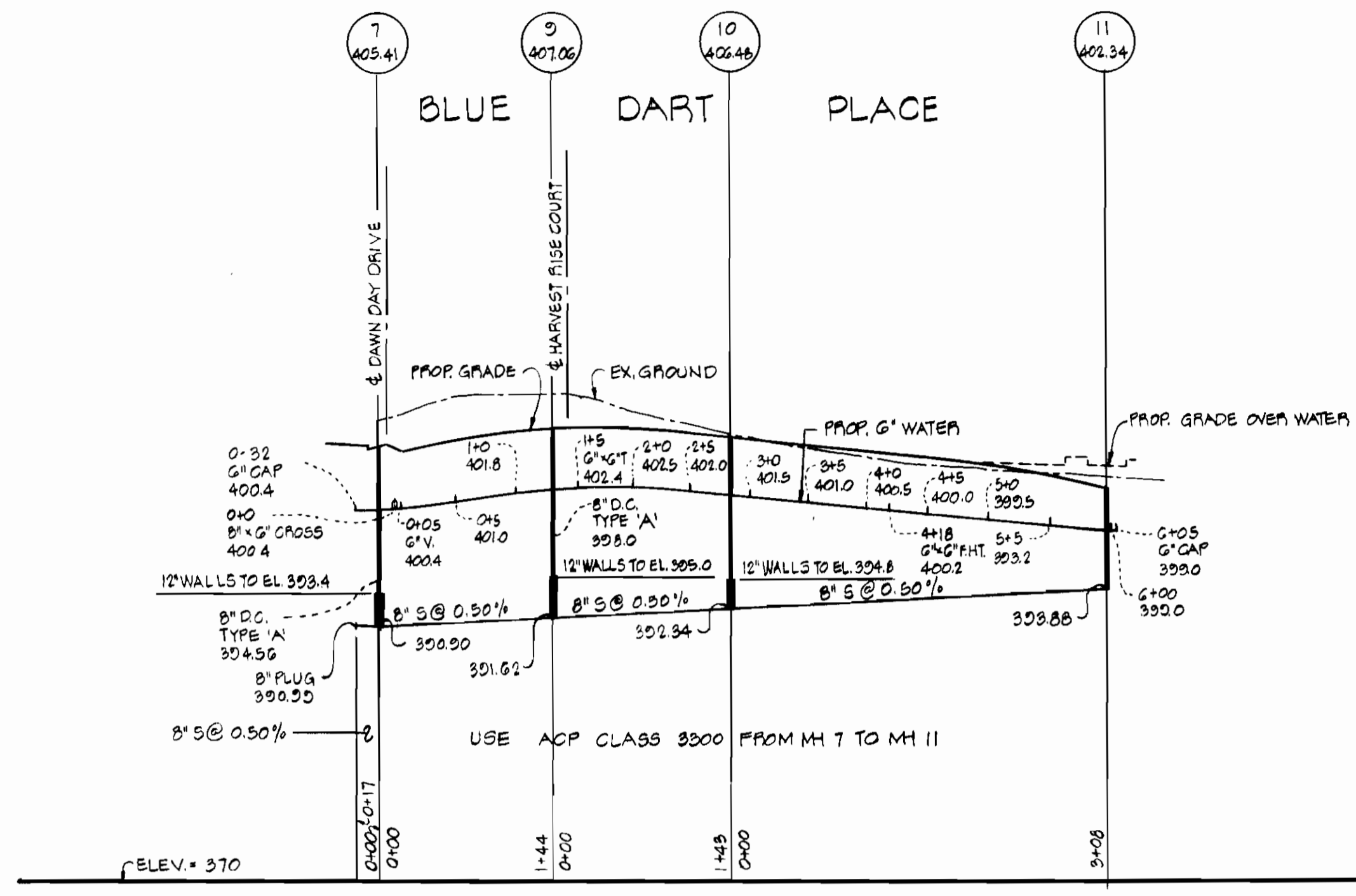
REV. DATE	REV. NO.	DESCRIPTION
7-25-79		CHANGED LOC. OF CON. ENCASE.
7-10-79	Δ	CHANGED RIM ELEV. AT STA 0+00 & SHAVED 10' OF CONC. ENCASEMENT.



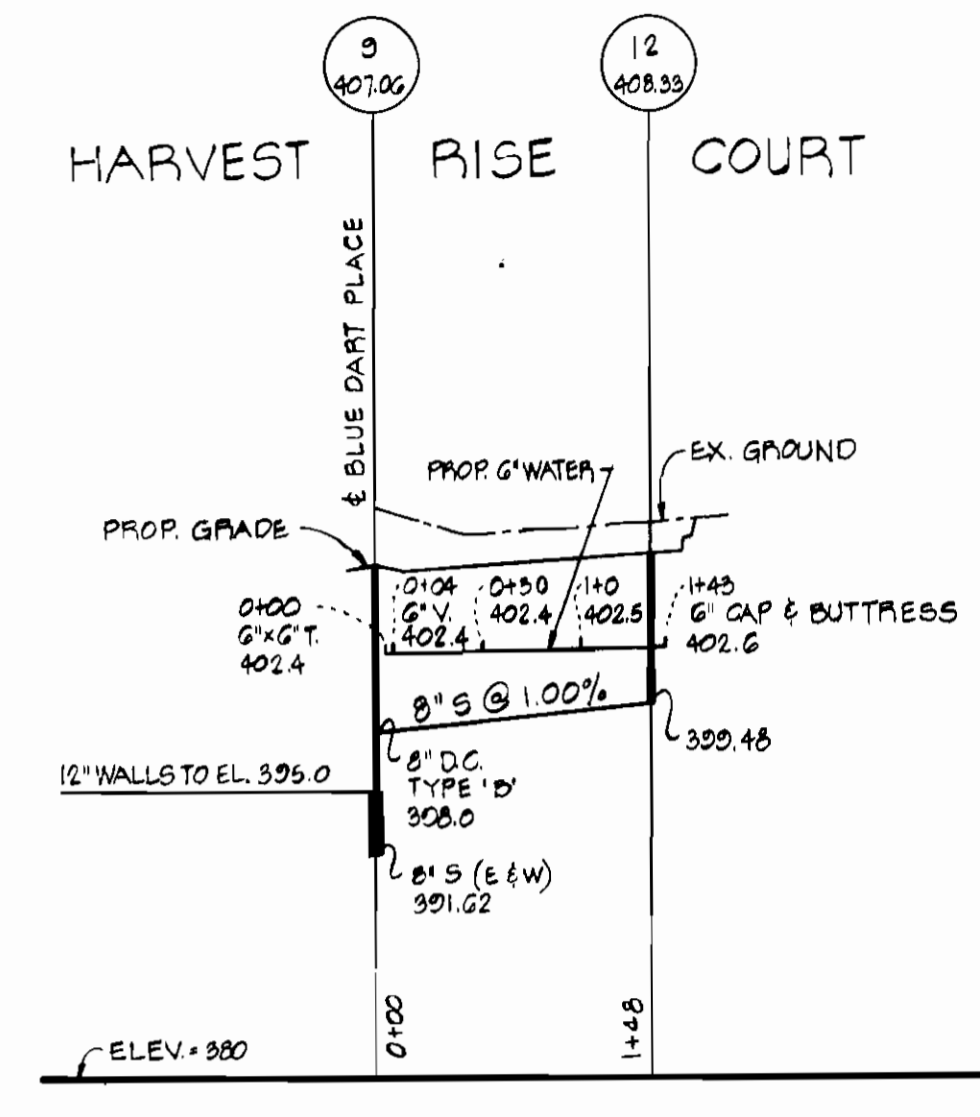
*Rodolph May Jr.*  
5-15-79

2854-D-W&S

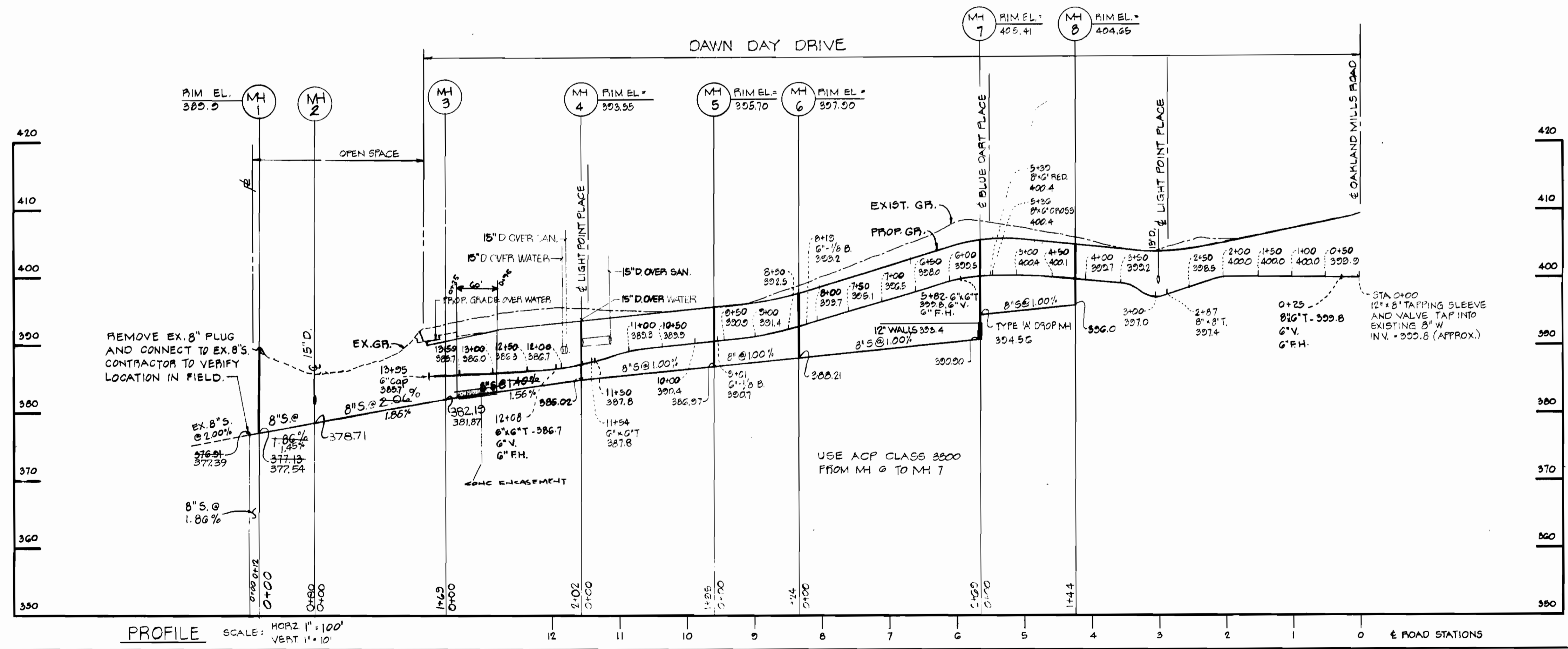
<b>BOENDER ASSOCIATES, INC.</b> ENGINEERS, PLANNERS, SURVEYORS BALTIMORE, MD. SALISBURY, MD. 465-7777 749-1286	<b>DEPARTMENT OF PUBLIC WORKS</b> <i>John F. Neuman</i> 6-5-79 DIRECTOR OF PUBLIC WORKS-DATE	<i>W.D. Kellard</i> 6-4-79 CHIEF, BUREAU OF ENGINEERING-DATE	CONTRACT NO. <b>2854-D-W&amp;S</b>	<b>PLAN AND PROFILE</b> <b>WATER AND SEWER MAINS</b>	ELECTION DISTRICT NO. 6	DRAWING NO. <b>4 OF 5</b>	SCALE <b>AS SHOWN</b>	DES:
								CHK:



PROFILE SCALE: HORIZ: 1"=100'  
VERT: 1"=10'



PROFILE SCALE: HORIZ: 1"=100'  
VERT: 1"=10'



PROFILE SCALE: HORIZ: 1"=100'  
VERT: 1"=10'

10-17-79	2	Prev. Loc. of MH 2 & 3
7-10-79	1	SHOWED 60" OF CONCRETE
REV.	REV.	ENGAGEMENT

**BOENDER ASSOCIATES, INC.**  
ENGINEERS, PLANNERS, SURVEYORS  
BALTIMORE, MD. SALISBURY, MD.  
465-7777 749-1286

**DEPARTMENT OF PUBLIC WORKS**  
6-5-79  
DIRECTOR OF PUBLIC WORKS - DATE

**6-4-79**  
CHIEF, BUREAU OF ENGINEERING - DATE

CONTRACT NO. **854-D-W&S**

PROFILES  
WATER AND SEWER MAINS

ELECTION DISTRICT NO. 6

DRAWING NO.  
5 OF 5

SCALE  
AS  
SHOWN

DES:  
DRAW:  
CHK:



Kodogol. May Jr.  
5-15-79

2654-D-W&S