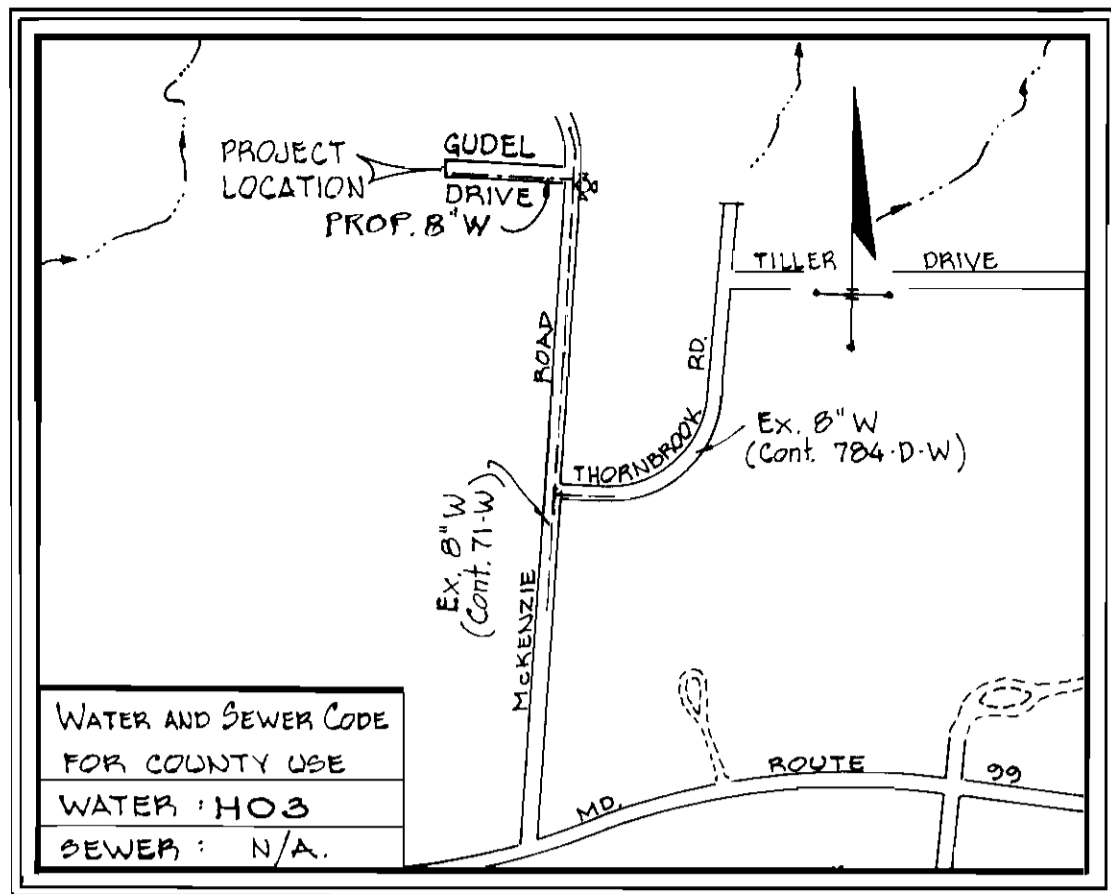
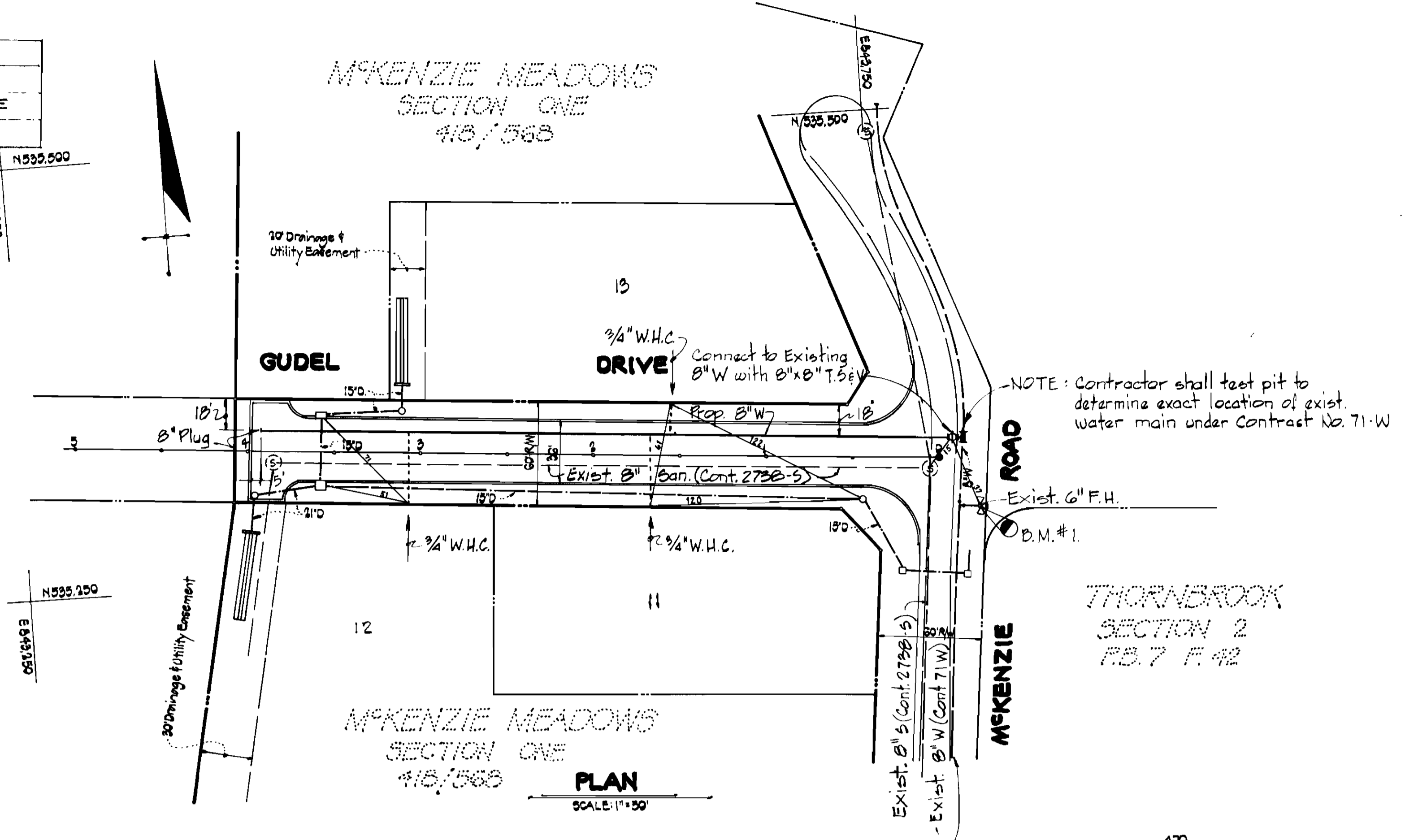


TYPE OF BUILDING - SINGLE FAMILY RESIDENTIAL
NUMBER OF LOTS - 3
NUMBER OF WATER HOUSE CONNECTIONS - 3 SINGLE
DRAINAGE AREA - PATAPSCO

GARFIELD LAND CO.
418/568

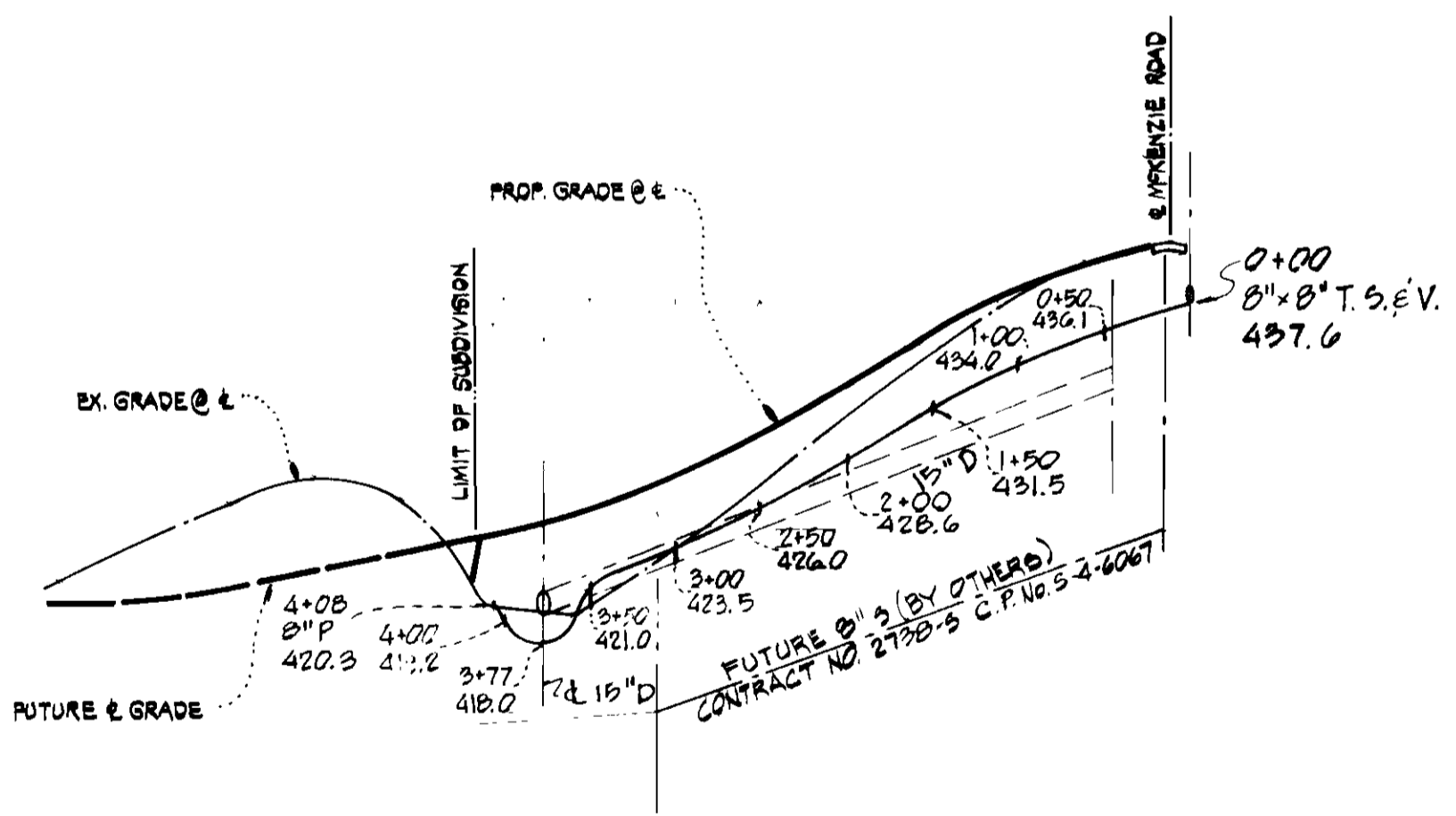


- NOTES**
1. Approximate locations of existing utilities are shown. The contractor shall take all necessary precautions to protect the existing utilities and to maintain uninterrupted service. Any damage incurred due to the contractor's operation shall be repaired immediately at the contractor's expense.
 2. All pipe elevations shown are invert elevations.
 3. The contractor shall notify 'Miss Utility' (530-0100) at least 3 days prior to beginning any construction shown hereon.
 4. See standard details and specifications.
 5. Clear all utilities by a minimum of 6'. Clear all utility poles by 2'-0" minimum tunnel as required. Any costs incurred to the contractor for tunneling or bracing poles shall be included in the unit price bid for excavation.
 6. Buttress or anchor all water main fittings with concrete. All valves shall be strapped to trees in accordance with standard details.
 7. All water mains to have a minimum of 8'-0" cover, unless noted.
 8. All horizontal and vertical centerlines are based on the Maryland State Grid System.
 9. All water mains shall be C.I.P. or D.I.P. unless otherwise noted.
 10. Water services shall be for inside meter settings.
 11. The contractor shall not operate any water main valves on the existing system.

GUDEL DRIVE

430
420
410
400
390

470
460
450
440
430
420
410
400
390



NOTE: SEDIMENT CONTROL MEASURES FOR THIS CONTRACT SHALL BE IMPLEMENTED IN ACCORDANCE WITH THE GRADING AND SEDIMENT CONTROL PLAN FOR F-78-130 AND ARTICLE 15 OF THE STANDARD SPECIFICATIONS.

BENCH MARKS

Bench Mark #1	Elev. 443.45
Road side bonnet bolt of fire hydrant in front of house #2501 McKenzie Road	
Bench Mark #2	Elev. 444.87
S.W.C. of conc. cover over inlet in front of house #2517 McKenzie Road	

QUANTITIES

ITEM	PROPOSED	AS-BUILT
8" WATER	208 L.F.	CLASS 52 ATLANTIC STATES
3/4" W.H.C.	102 L.F.	TYPE 'K' HALSTEAD METAL
8" WATER PLUG	1	RESILIENT MUELLER

REVIEWED FOR HOWARD S.C.D. AND MEETS TECHNICAL REQUIREMENTS
William F. Palmer 5-12-81
U.S. SOIL CONSERVATION SERVICE DATE

THIS DEVELOPMENT IS APPROVED SOIL EROSION AND SEDIMENT CONTROL BY THE HOWARD SOIL CONSERVATION DISTRICT.
William F. Palmer 5-12-81
SOIL CONSERVATION DISTRICT DATE



PROFILE
SCALE: HORIZONTAL 1" = 100'
VERTICAL 1" = 10'

DEPARTMENT OF PUBLIC WORKS
HOWARD COUNTY, MARYLAND
William F. Palmer 5-14-81
DIRECTOR OF PUBLIC WORKS - DATE
William F. Palmer 5/13/81
CHIEF - BUREAU OF UTILITIES - DATE

HUDKINS ASSOCIATES
ENGINEERS
230 JOSEPH SQUARE
COLUMBIA, MARYLAND

CONTRACT NO. 853-D-W

PLAN & PROFILE
8" WATER MAIN

1	3-5-81	Relocated 8" W Due to Conflict with Ex. San.
Rev. No.	Date	Description

MCKENZIE MEADOWS
SECTION ONE
ELECTION DISTRICT NO. 2 HOWARD COUNTY, MD.

DRAWING NO. 1 OF 1
SCALE H. 1" = 50' V. 1" = 5'
DRAWN: DES. T.K.S., JR. CHKD. J.L.S.