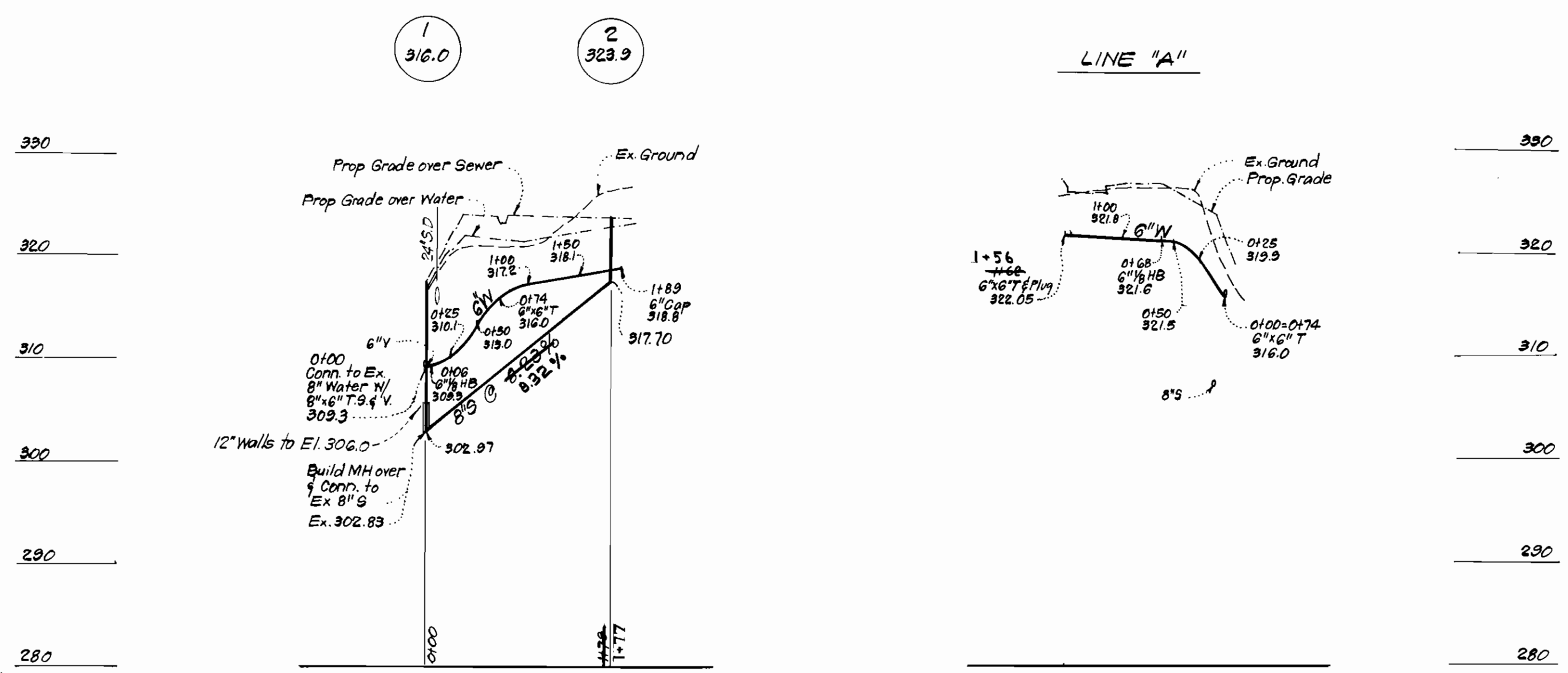
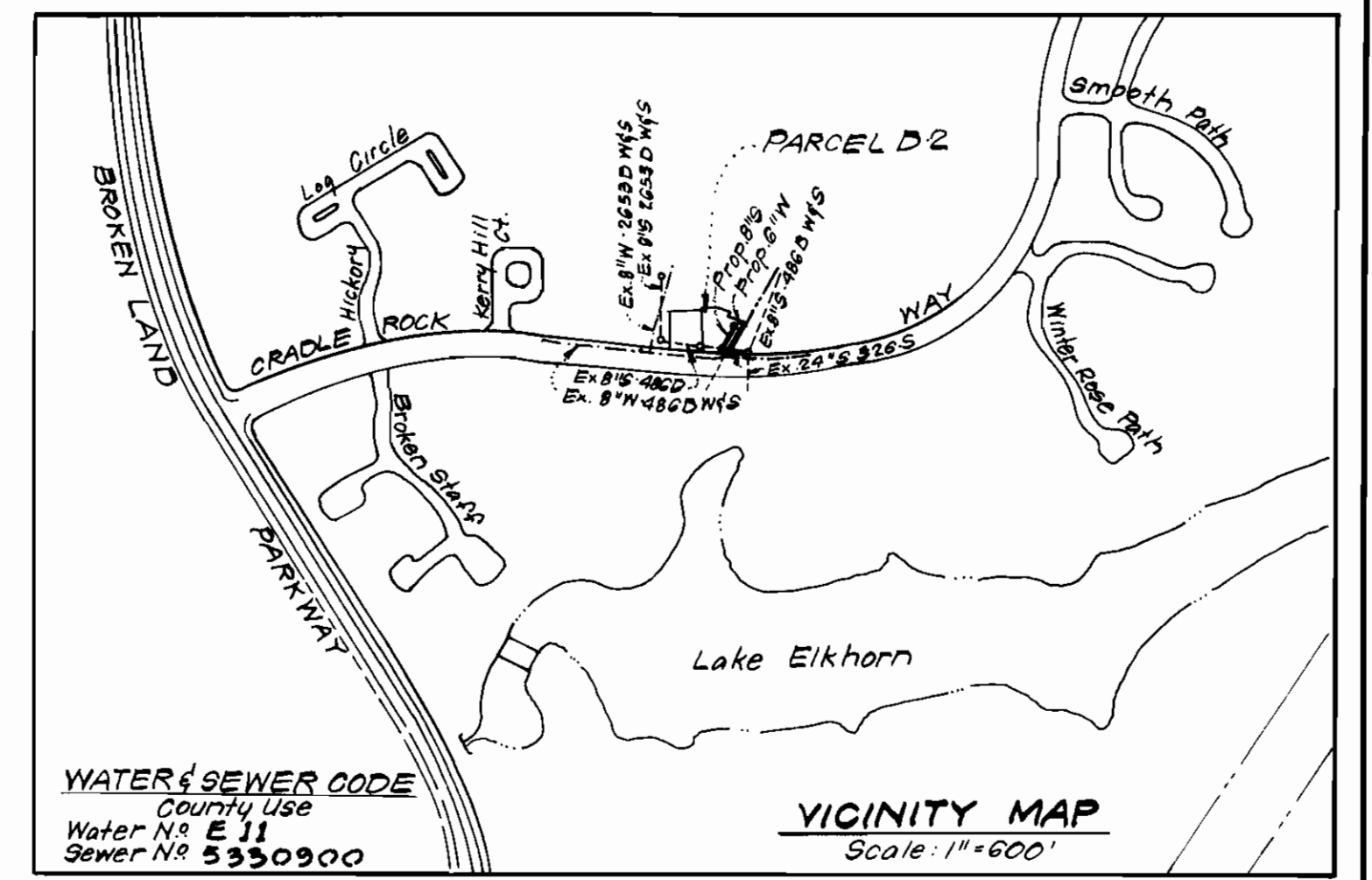


PLAN SCALE
1" = 50'



PROFILE SCALE
HORIZ. : 1" = 100'
VERT. : 1" = 10'



VICINITY MAP
Scale: 1" = 600'

- GENERAL NOTES**
- All water mains to be C.I.P., D.I.P. or A.C.P. unless otherwise shown.
 - Top of all water mains to have a minimum of 3.5 ft. cover unless otherwise noted.
 - All valves shall be strapped to face in accordance with standard details.
 - Block all fittings with concrete, see standards bound in specifications.
 - Bury line elevations on fire hydrants shall be set to the elevations shown on the drawings. All fire hydrants shall be strapped and buttressed with concrete in accordance with standard details. Soil around the fire hydrants to be compacted in accordance with Section 5-15 of the Standard Specifications.
 - All sewer mains shall be C.S.P.K., V.C.P.K., or A.C.P. Class 2400 unless otherwise noted.
 - The contractor shall provide a joint in all sewer mains within 2'-0" of exterior manhole wall.
 - All manholes shall be 4'-0" inside diameter, unless otherwise noted.
 - Approximate locations of existing mains are shown. The contractor shall take all necessary precautions to protect existing mains and services and maintain uninterrupted supply. Any damage incurred shall be reported immediately.
 - All horizontal controls are based on Maryland State Coordinates.
 - All vertical controls are based on U.S.G.S. Datum.
 - All pipe elevations shown are invert elevations.
 - Clear all utilities by a minimum of 6", clear all poles by 2'-0" minimum or tunnel as required.
 - For all standard details see standards bound in specifications.
 - Contractor shall locate existing utilities in advance of construction operations in the vicinity of proposed utilities.
 - Contractor shall notify the following utilities or agencies at least five (5) days before starting work shown on these plans.
 - State Highway Administration - 531-5593
 - Baltimore Gas and Electric Company - Underground Electric Distribution Engineering - "Damage Control" - 234-5631
 - Baltimore Gas and Electric Company - Underground Gas Distribution Engineering - 553-0100
 - Chesapeake and Potomac Telephone Co. - 725-9976
 - American Telephone and Telegraph - Cable Location Division - 301-333-3553
 - Colonial Pipeline Company - 781-4641.
 - Trees are to be protected from damage to maximum extent. Trees located within the construction strip are not to be removed or damaged by the contractor.
 - Contractor shall remove trees, stumps and rocks along line of excavation as directed by the Engineer. Payment for such removal shall be included in the unit price bid for excavation and backfill for water and sewer mains.
 - Place regulation "Men Working" and warning signs as required to comply with Maryland State Highway Administration Manual of Traffic Control for Highway Construction and Maintenance Operations.

QUANTITIES			
ITEM	BID	AS-BUILT	MATERIAL/SUPPLIER
6" Water	345 LF	352	D.I.P. GRIFFIN
8" Sewer	179 LF	173'	JOHN MANVILLE TRONITE
F.H.	1 EA.	1	M+H

COLUMBIA V.O.B.
PARCEL D-2
SECTION 1 AREA 3
Contract No. 2852 D W's

J. N. Cook
3-29-79

No.	Date	Revision
1	5-29-79	Relocated 6" W

CLARK • FINEFROCK & SACKETT
ENGINEERS • PLANNERS • SURVEYORS
11315 LOCKWOOD DRIVE • SILVER SPRING, MARYLAND • (301) 593-3400

DEPARTMENT OF PUBLIC WORKS
HOWARD COUNTY, MARYLAND
George F. Nemmup 4-16-79
DIRECTOR OF PUBLIC WORKS DATE

W. J. ... 4-16-79
CHIEF, BUREAU OF ENGINEERING DATE

CONTRACT NO. 2852 D W's

PLAN AND PROFILES
WATER & SEWER MAINS

COLUMBIA
VILLAGE OF OWEN BROWN
ELECTION DISTRICT-GUILFORD No. 6

DRAWING
NO. 1
OF 1

SCALE
As Shown

"AS-BUILT" J.J.
8/13/79