

TYPE OF BUILDINGS HEALTH PARK FACILITY  
 NUMBER OF LOTS 1  
 NUMBER OF WATER HOUSE CONNECTIONS 1  
 NUMBER OF SEWER HOUSE CONNECTIONS 1  
 DRAINAGE AREA PATAPSCO

**VICINITY MAP**  
 Scale: 1"=600'

**GENERAL NOTES**

1. Approximate locations of existing utilities are shown. The Contractor shall take all necessary precautions to protect the existing utilities and to maintain uninterrupted service. Any damage incurred due to the Contractor's operation shall be repaired immediately at the Contractor's expense.
2. All pipe elevations shown are invert elevations.
3. The Contractor shall locate existing utilities well in advance of construction activities.
4. See standard details bound in specifications.
5. Clear all utilities by a minimum of 6 inches. Clear all utility poles by 2'-0" minimum or tunnel as required. Any costs incurred to the Contractor for excavation or tunneling or bracing poles shall be included in the unit price bid for excavation.
6. The Contractor shall provide a pipe joint in all sewer mains within 2'-0" of exterior manhole walls.
7. The sewer main shall be V.C.P.X., C.S.P.X. or A.C.P. Class 2400, unless otherwise noted.
8. All manholes shall be 4'-0" inside diameter, unless otherwise noted.
9. Buttress or anchor all water main fittings with concrete. All valves shall be strapped to tees in accordance with standard details.
10. All water mains to have a minimum of 3.5' cover unless otherwise noted.
11. All fire hydrants shall be strapped to the tee and shall be buttressed with concrete in accordance with standard details. Cost of strapping fire hydrants and valves to be included in the unit price bid for furnishing and installing fire hydrants. Soil around the fire hydrants to be compacted in accordance with Section 5-15 of the Standard Specifications.
12. Bury line elevations on fire hydrants shall be set to the elevations shown on the plan.
13. All horizontal controls are based on Maryland State Coordinates.
14. All vertical controls are based on Maryland State Datum.

REV	DATE	DESCRIPTION
2	2/15/84	Removed Health Park Access Drive Parking
1	1/12/84	Revised 8" W in Town & Country Blvd.

DEPARTMENT OF PUBLIC WORKS  
 HOWARD COUNTY, MARYLAND  
 James L. Blue, Chief-Bureau of Utilities  
 Date: 7-24-79

REMOVE EXIST. 8" PLUG  
 CONNECT 8" W

PLAN  
 SCALE 1"=50'

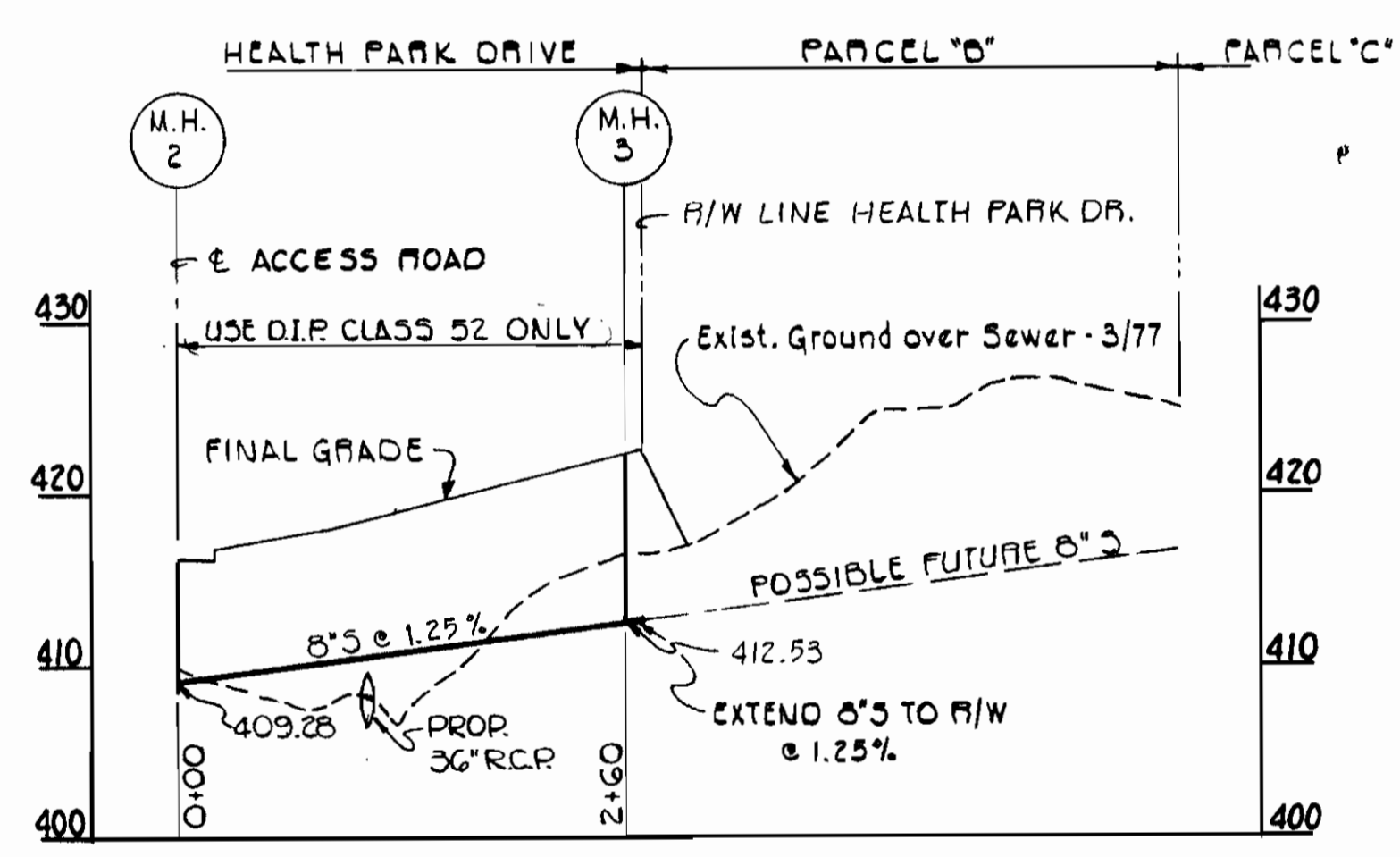
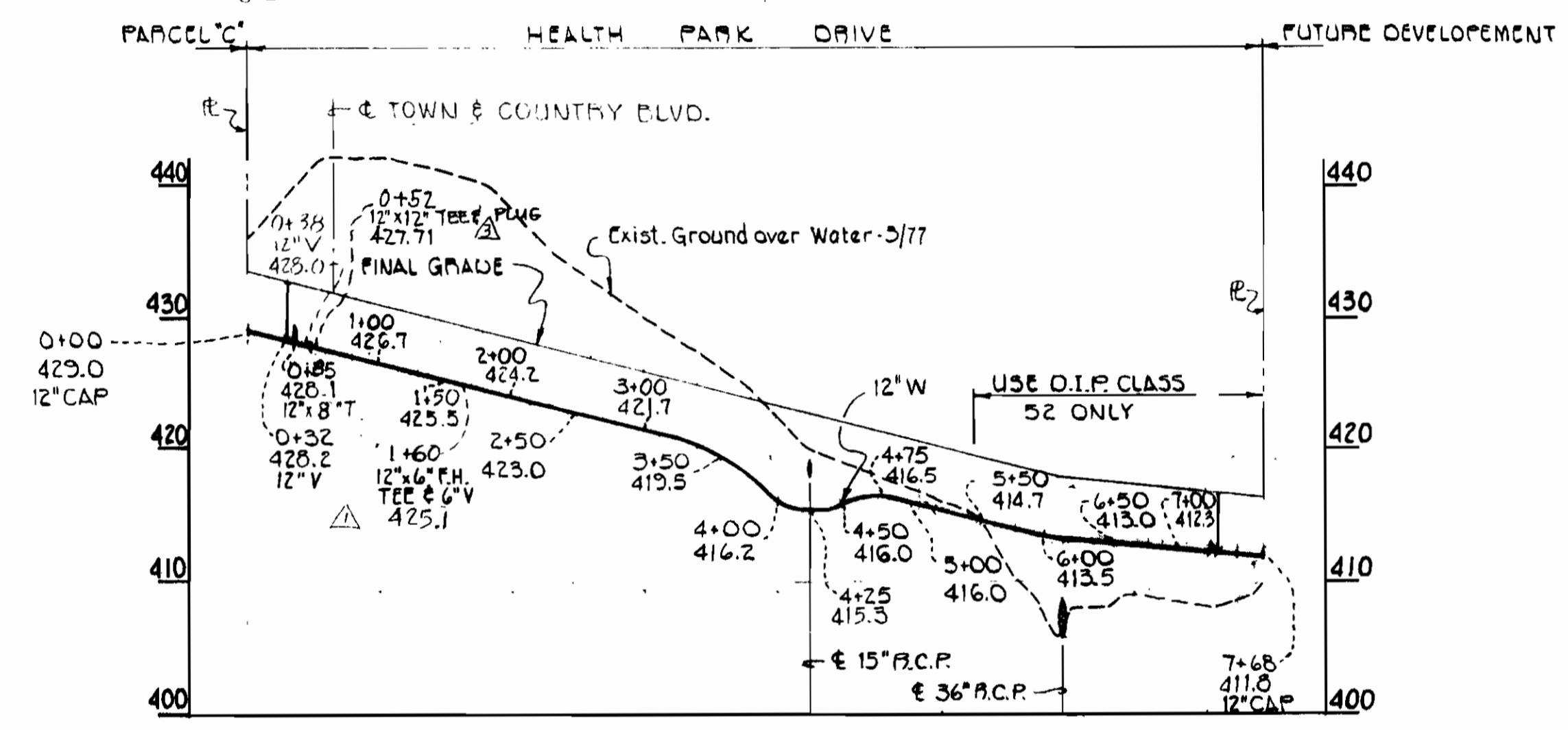
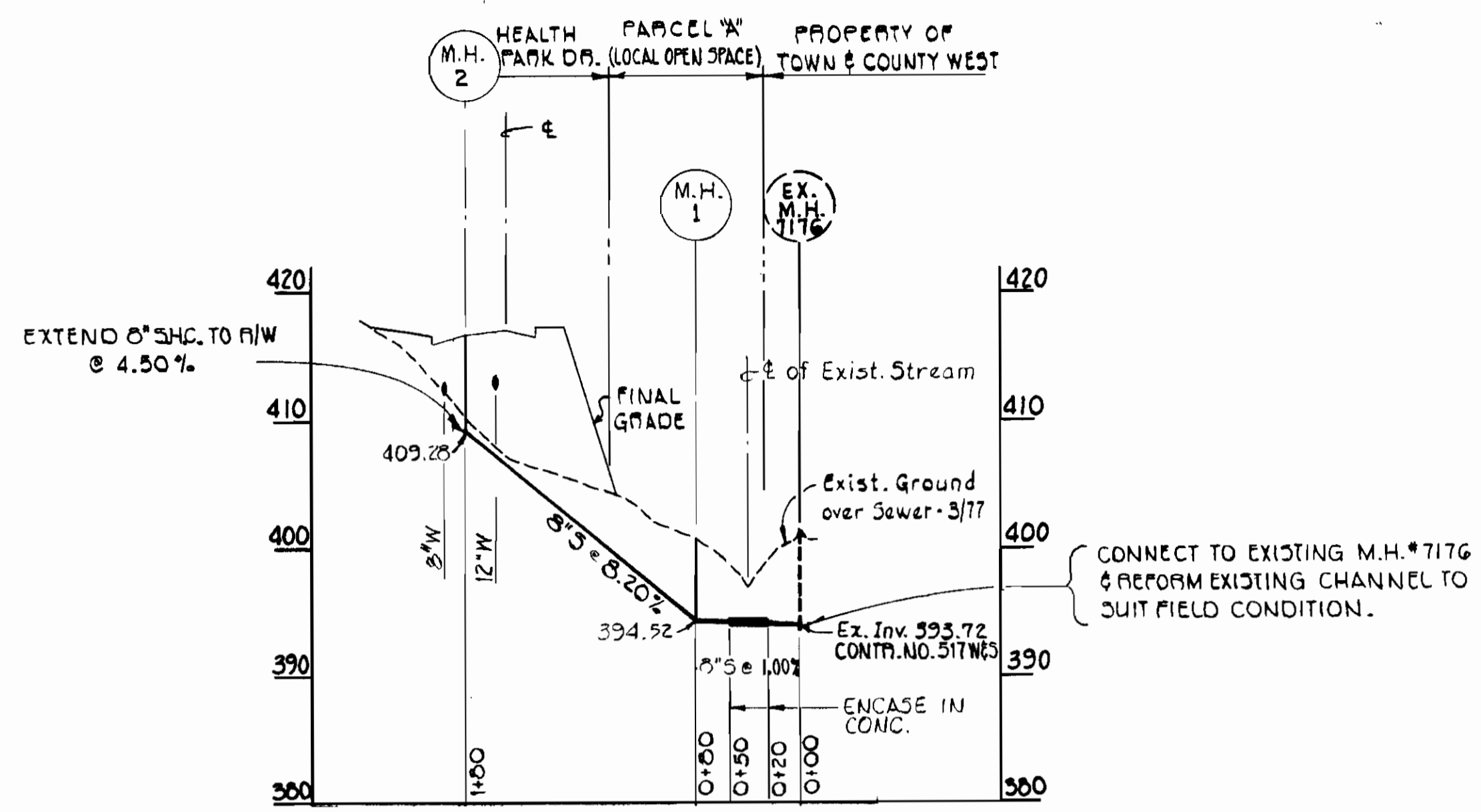
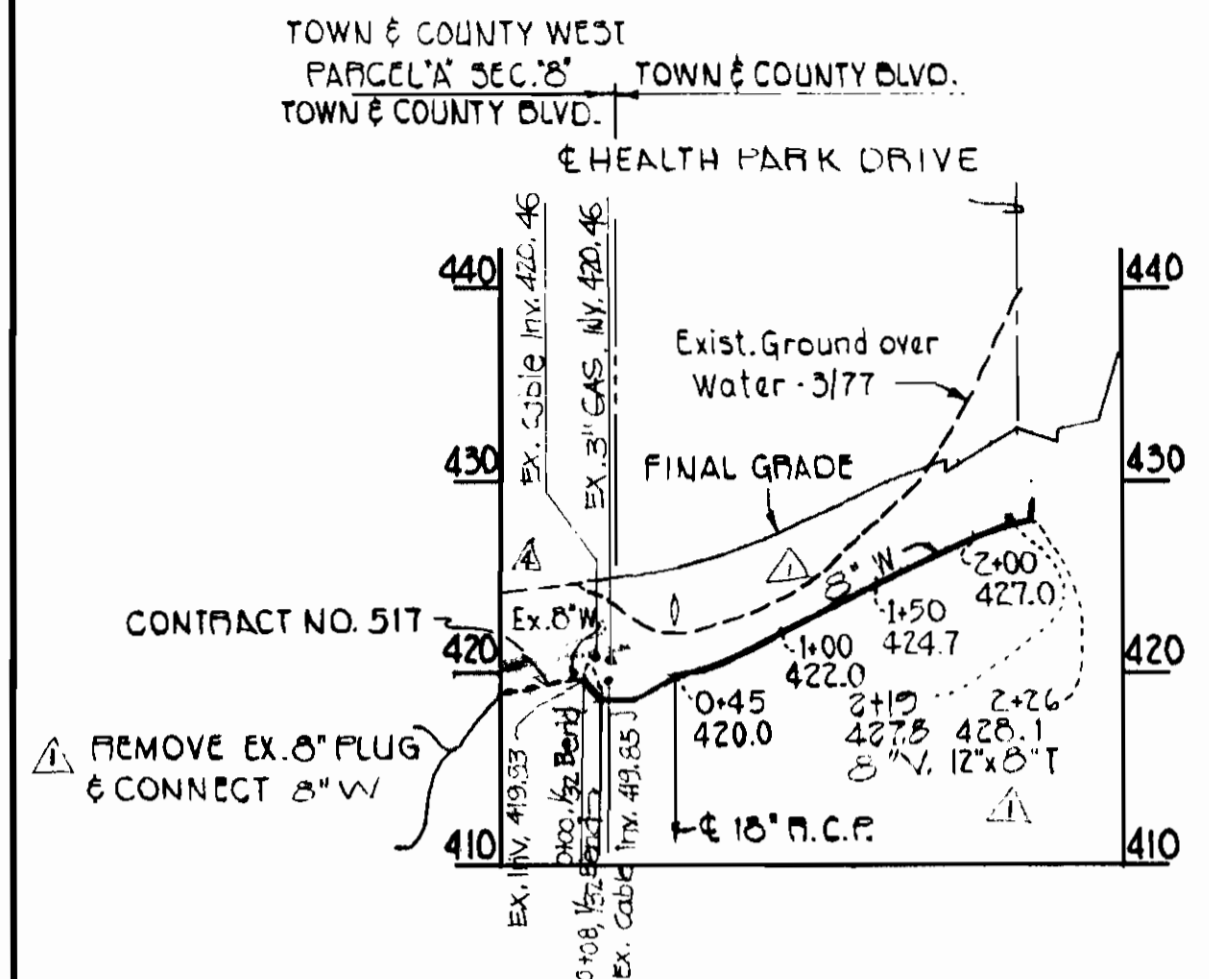
DEPARTMENT OF PUBLIC WORKS  
 HOWARD COUNTY, MARYLAND  
 Director of Public Works  
 Date: 7-30-79

REV.	DATE	DESCRIPTION
1	5-15-84	ADDED GAS LINE & CABLE LINE
2	4/17/84	ADDED 12" x 12" TEE

**BENCH MARKS**  
 B.M.#1 - Ex. M.H.# 7176 - Top of Rim  
 ELEV. 400.85  
 B.M.#2 - Ex. M.H.# 7177 - Top of Rim  
 ELEV. 411.63

QUANTITIES			
ITEM	ESTIMATED	AS BUILT	MATERIAL & SUPPLIER
8" SEWER	532 L.F.	515	JOHN'S-MANVILLE
MANHOLE	3 EA.	3	ATLANTIC PRECAST
12" WATER	995 L.F.	748	GRIFFIN
12" VALVE	3 EA.	2	DRESSER
8" WATER	35 L.F.	233	GRIFFIN
8" VALVE	1 EA.	1	DRESSER
6" WATER	34 L.F.	17	GRIFFIN
FIRE HYDRANT	2 EA.	1	DRESSER

CONTRACT NO. 849-D-W-55  
 BON SECOURS HEALTH PARK  
 SEWER MAINS EXTENSION  
 HOWARD COUNTY, MARYLAND

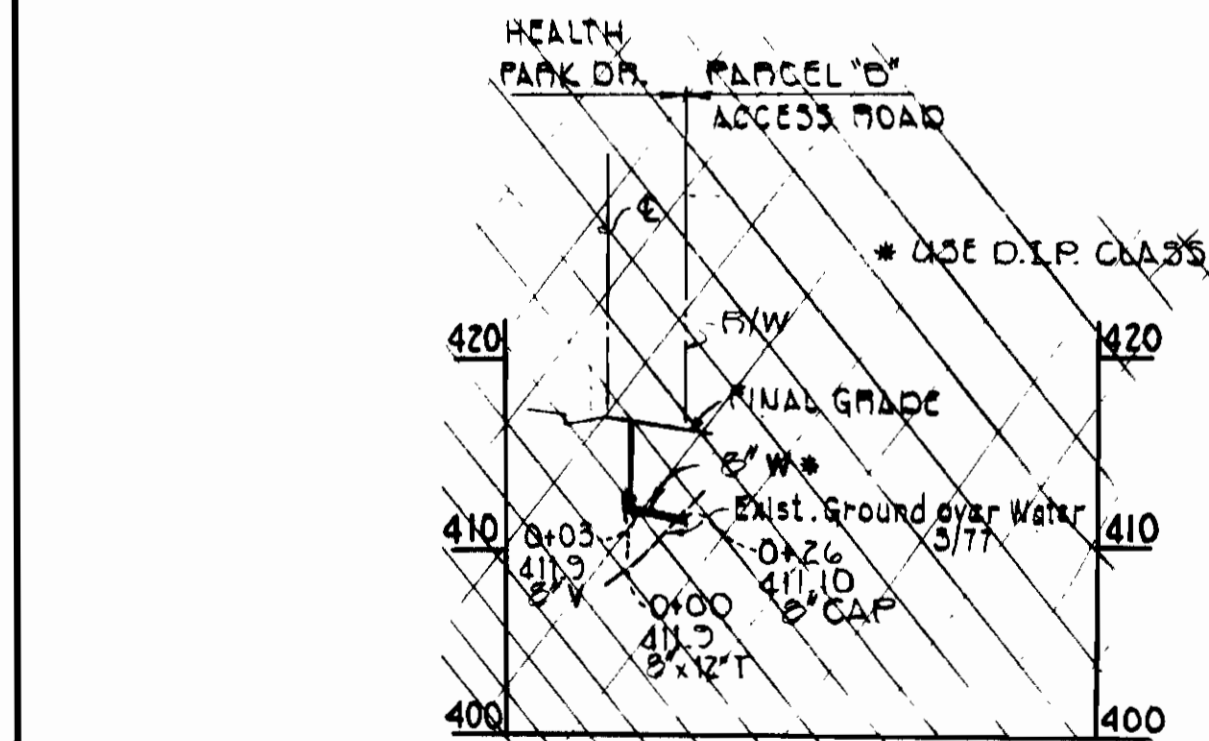
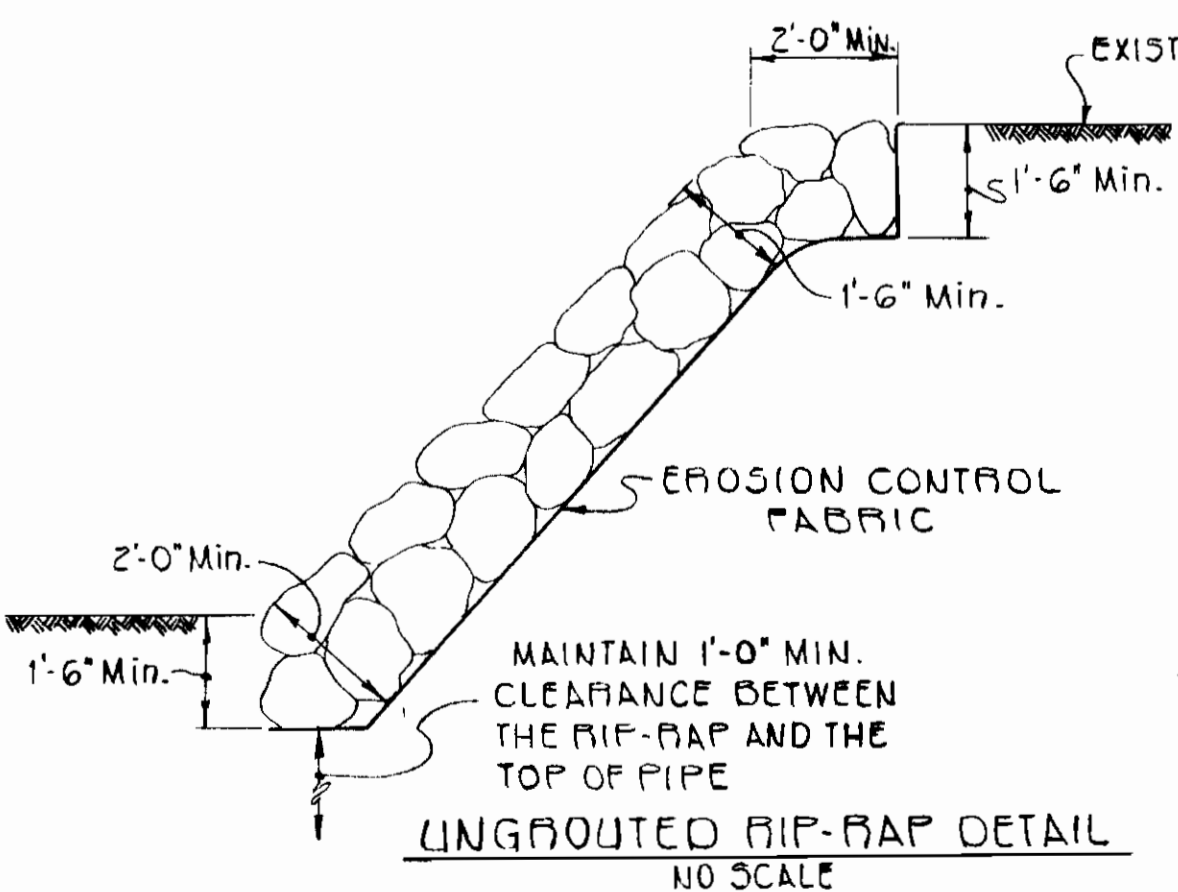


**SANITARY SEWER PROFILES**

SCALE: HORIZ. 1" = 100'  
VERT. 1" = 10'

NOTE: Rocks to consist of dense rocks of random shape and sizes, resistant to the action of air and water and suitable for bank protection. All rocks shall weigh a minimum of 75 pounds.

Erosion Control Fabric shall be Poly Filter-X as manufactured by Carthage Mills, Inc. or Permealiner M-1195 as manufactured by Staff Industries, Inc., or equal.



REV.	DATE	DESCRIPTION
1	4/17/84	ADDED 12" x 12" TEE
2	2/15/84	Removed Health Park Access Drive
3	1/16/84	Revised to show Town & Country Blvd
4	1/16/84	DESCRIPTIVE

WATER MAIN PROFILES  
SCALE: HORIZ. 1" = 100'  
VERT. 1" = 10'

DEPARTMENT OF PUBLIC WORKS  
HOWARD COUNTY, MARYLAND  
CHIEF-BUREAU OF UTILITIES  
DATE: 7-24-79  
CHIEF-BUREAU OF ENGINEERING

REV.	DATE	DESCRIPTION
1	5-15-84	Changed 8" W PROFILE

DEPARTMENT OF PUBLIC WORKS  
HOWARD COUNTY, MARYLAND  
DIRECTOR OF PUBLIC WORKS  
DATE: 7-29-79

CONTRACT NO. 849-D-W-55

PROFILE OF WATER AND SEWER MAINS

BON SECOURS HEALTH PARK  
ELECTION DISTRICT ELLICOTT CITY NO. 2  
HOWARD COUNTY, MARYLAND

DRAWING NO. 2 OF 2  
SCALE AS SHOWN

CONTRACT NO. 849-D-W-55  
BON SECOURS HEALTH PARK  
SEWER MAINS EXTENSION  
HOWARD COUNTY, MARYLAND

