

Wastewater Treatment	Savage
No. of S.H.C.'s	30
No. of W.H.C.'s	30
Type of Lots	Single Family
No. of Lots	30

CONTRACT NO. 2847D-W&S

DORSEY HALL

HOWARD COUNTY, MARYLAND DEPARTMENT OF PUBLIC WORKS

QUANTITIES			
ITEM	BID	AS-BUILT	MATERIAL/SUPPLIER
8" Sewer	2210 L.F.	2,165 L.F.	DUCTILE-GRiffin
Manholes	85 V.F.	93.55 V.F.	CONCRETE PIPE PRODUCTS
6" Water	1300 L.F.	1,313 L.F.	DUCTILE-GRiffin
8" Water	50 L.F.	52 L.F.	DUCTILE-GRiffin
12" Water	4450 L.F.	4,453 L.F.	DUCTILE-GRiffin
Fire Hydrants	9	9	M&H



Kenneth A. McLeod

Dorsey Hall - Phase I
Section 1 Area 12
Contract No. 2847D-W&S

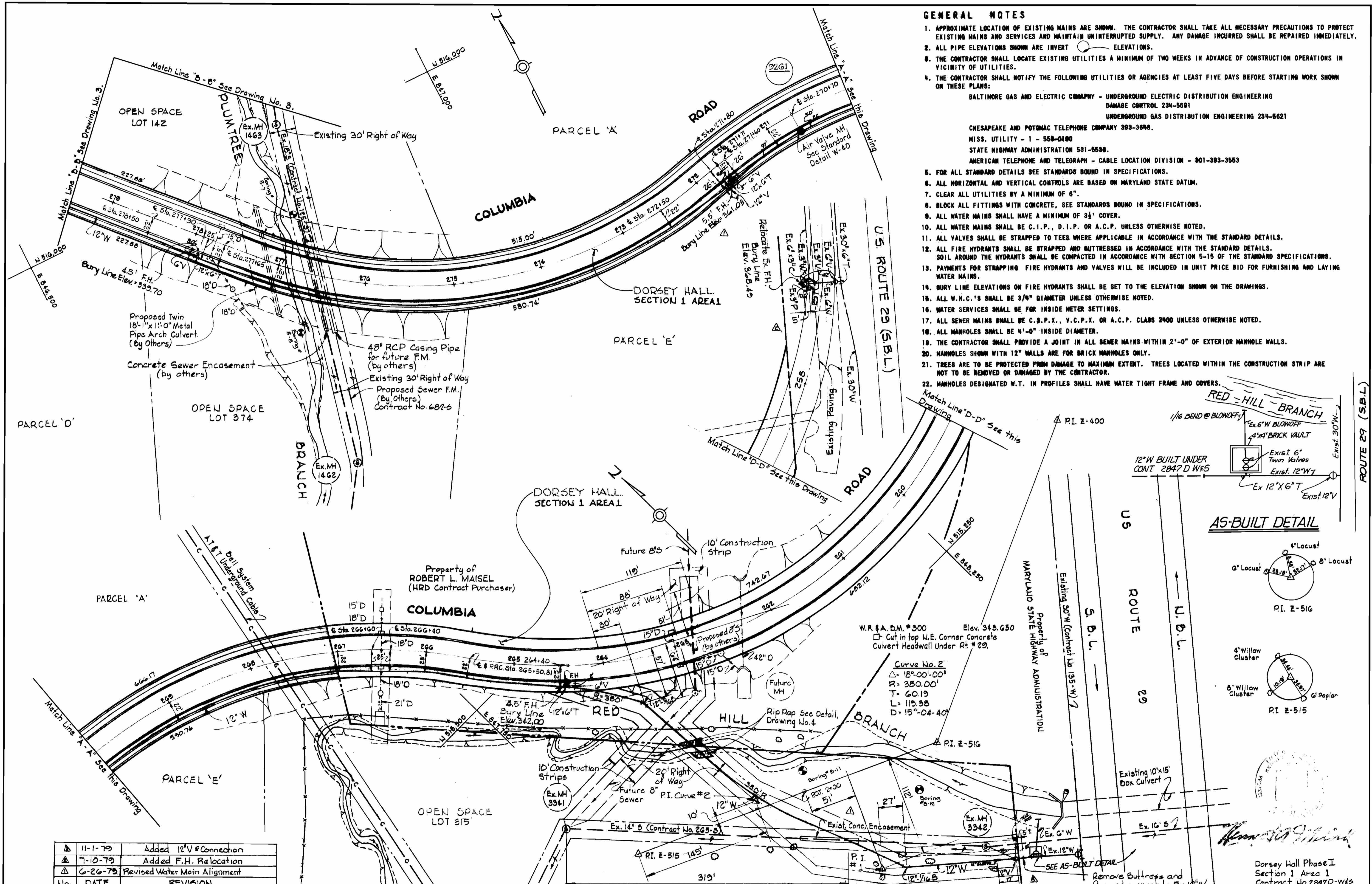
Δ	6-26-79	Revised Plan
No.	DATE	REVISION

WHITMAN, REQUARDT & ASSOCIATES ENGINEERS 1304 ST. PAUL ST. BALTIMORE, MARYLAND	DEPARTMENT OF PUBLIC WORKS HOWARD COUNTY, MARYLAND <i>James F. Nunn</i> 3/30/79 DIRECTOR OF PUBLIC WORKS - DATE	CONTRACT NO. 2847D-W&S <i>W. O. 7425</i> 3.30.79 CHIEF-BUREAU OF ENGINEERING - DATE	LOCATION MAP OF WATER & SEWER MAINS	ELECTION DISTRICT ELLICOTT CITY NO.2	DRAWING NO. 1	SCALE 1"=600'
					OF 5	

W. O. 7425

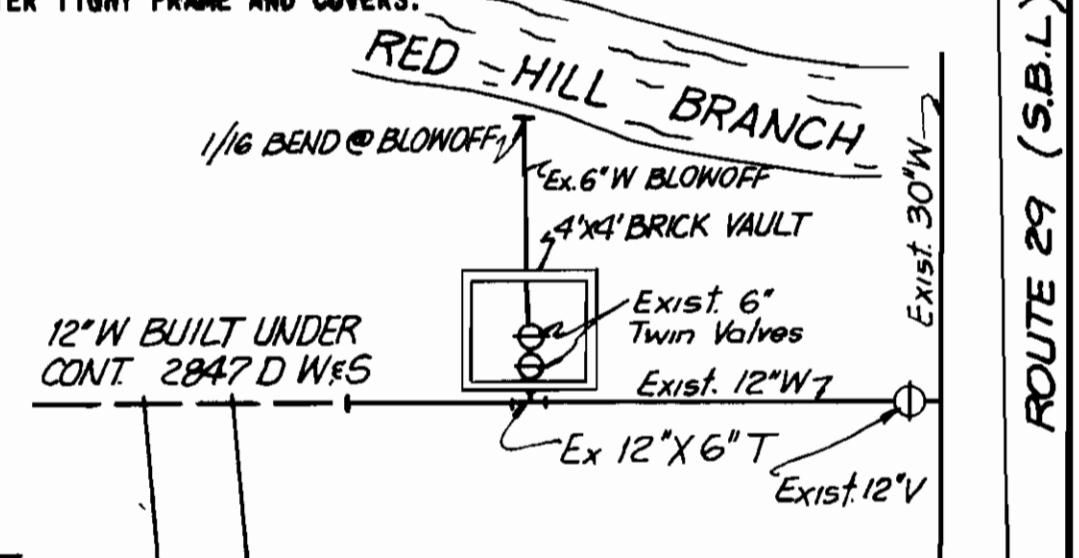
AUGUST 28, 1979

AS-BUILT

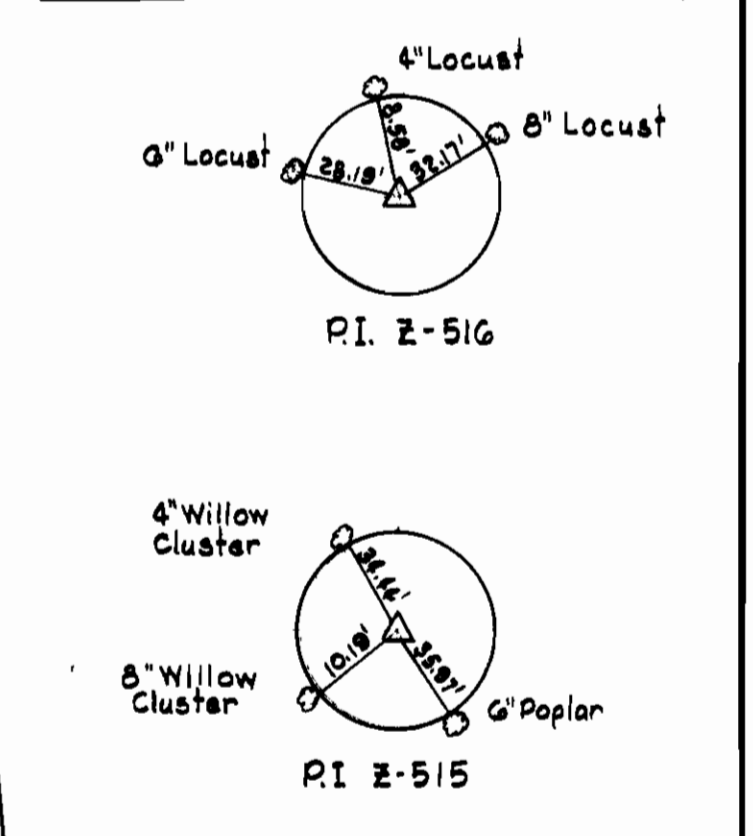


GENERAL NOTES

1. APPROXIMATE LOCATION OF EXISTING MAINS ARE SHOWN. THE CONTRACTOR SHALL TAKE ALL NECESSARY PRECAUTIONS TO PROTECT EXISTING MAINS AND SERVICES AND MAINTAIN UNINTERRUPTED SUPPLY. ANY DAMAGE INCURRED SHALL BE REPAIRED IMMEDIATELY.
2. ALL PIPE ELEVATIONS SHOWN ARE INVERT ELEVATIONS.
3. THE CONTRACTOR SHALL LOCATE EXISTING UTILITIES A MINIMUM OF TWO WEEKS IN ADVANCE OF CONSTRUCTION OPERATIONS IN VICINITY OF UTILITIES.
4. THE CONTRACTOR SHALL NOTIFY THE FOLLOWING UTILITIES OR AGENCIES AT LEAST FIVE DAYS BEFORE STARTING WORK SHOWN ON THESE PLANS:
 BALTIMORE GAS AND ELECTRIC COMPANY - UNDERGROUND ELECTRIC DISTRIBUTION ENGINEERING DAMAGE CONTROL 234-5691
 UNDERGROUND GAS DISTRIBUTION ENGINEERING 234-6621
 CHESAPEAKE AND POTOMAC TELEPHONE COMPANY 399-3696.
 MISS. UTILITY - 1 - 568-0100
 STATE HIGHWAY ADMINISTRATION 531-5536.
 AMERICAN TELEPHONE AND TELEGRAPH - CABLE LOCATION DIVISION - 301-893-3563
5. FOR ALL STANDARD DETAILS SEE STANDARDS BOUND IN SPECIFICATIONS.
6. ALL HORIZONTAL AND VERTICAL CONTROLS ARE BASED ON MARYLAND STATE DATUM.
7. CLEAR ALL UTILITIES BY A MINIMUM OF 6\".
8. BLOCK ALL FITTINGS WITH CONCRETE, SEE STANDARDS BOUND IN SPECIFICATIONS.
9. ALL WATER MAINS SHALL HAVE A MINIMUM OF 3 1/2' COVER.
10. ALL WATER MAINS SHALL BE C.I.P., D.I.P. OR A.C.P. UNLESS OTHERWISE NOTED.
11. ALL VALVES SHALL BE STRAPPED TO TEES WHERE APPLICABLE IN ACCORDANCE WITH THE STANDARD DETAILS.
12. ALL FIRE HYDRANTS SHALL BE STRAPPED AND BUTTRESSED IN ACCORDANCE WITH THE STANDARD DETAILS. SOIL AROUND THE HYDRANTS SHALL BE COMPACTED IN ACCORDANCE WITH SECTION 5-15 OF THE STANDARD SPECIFICATIONS.
13. PAYMENTS FOR STRAPPING FIRE HYDRANTS AND VALVES WILL BE INCLUDED IN UNIT PRICE BID FOR FURNISHING AND LAYING WATER MAINS.
14. BURY LINE ELEVATIONS ON FIRE HYDRANTS SHALL BE SET TO THE ELEVATION SHOWN ON THE DRAWINGS.
15. ALL W.H.C.'S SHALL BE 3/4\" DIAMETER UNLESS OTHERWISE NOTED.
16. WATER SERVICES SHALL BE FOR INSIDE METER SETTINGS.
17. ALL SEWER MAINS SHALL BE C.S.P.X., V.C.P.X. OR A.C.P. CLASS 2400 UNLESS OTHERWISE NOTED.
18. ALL MANHOLES SHALL BE 4'-0\" INSIDE DIAMETER.
19. THE CONTRACTOR SHALL PROVIDE A JOINT IN ALL SEWER MAINS WITHIN 2'-0\" OF EXTERIOR MANHOLE WALLS.
20. MANHOLES SHOWN WITH 12\" WALLS ARE FOR BRICK MANHOLES ONLY.
21. TREES ARE TO BE PROTECTED FROM DAMAGE TO MAXIMUM EXTENT. TREES LOCATED WITHIN THE CONSTRUCTION STRIP ARE NOT TO BE REMOVED OR DAMAGED BY THE CONTRACTOR.
22. MANHOLES DESIGNATED W.T. IN PROFILES SHALL HAVE WATER TIGHT FRAME AND COVERS.



AS-BUILT DETAIL



No.	DATE	REVISION
1	11-1-79	Added 12\"/>
2	7-10-79	Added F.H. Relocation
3	6-26-79	Revised Water Main Alignment

WHITMAN, REQUARDT & ASSOCIATES
 ENGINEERS
 1304 ST. PAUL ST.
 BALTIMORE, MARYLAND

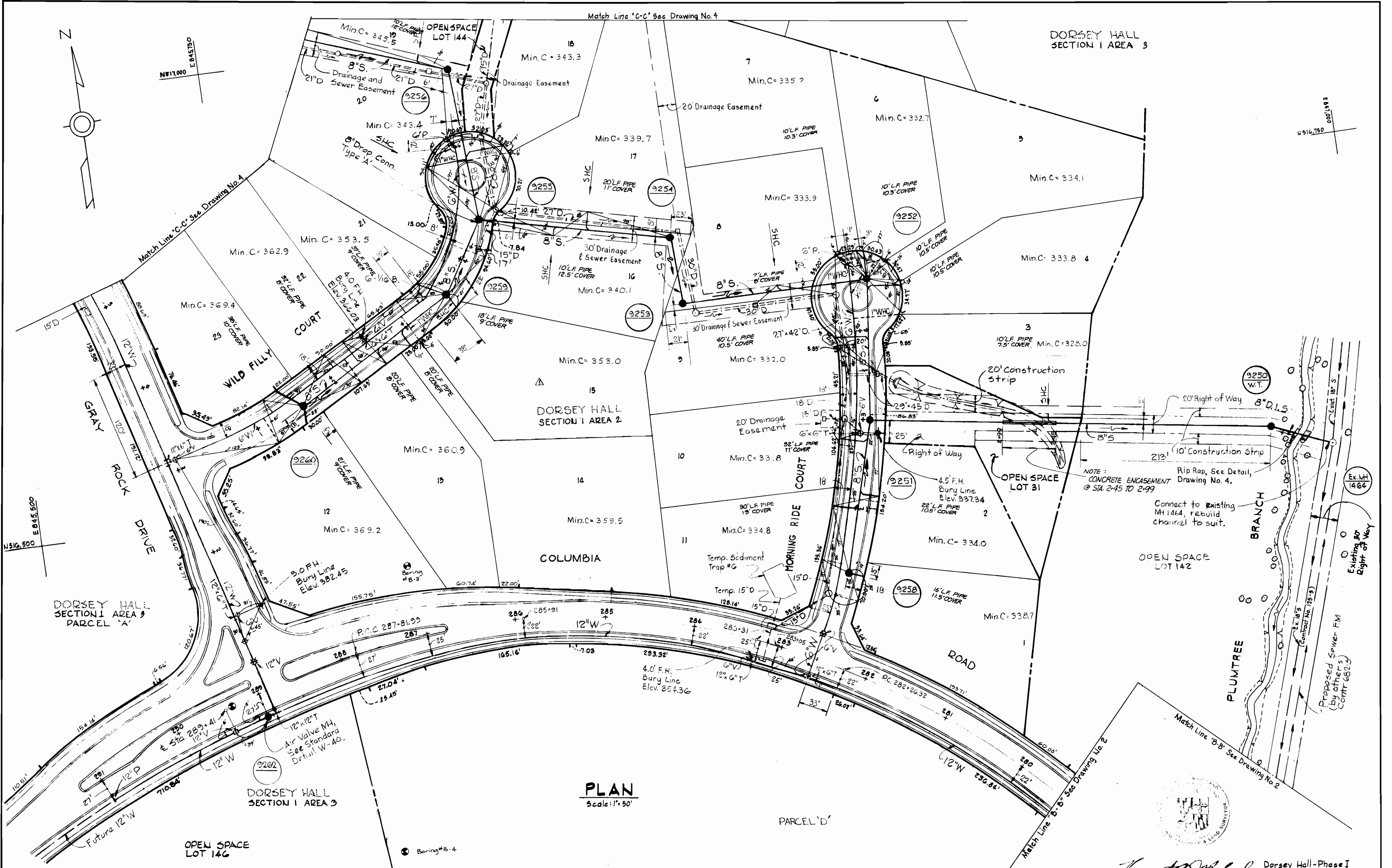
DEPARTMENT OF PUBLIC WORKS
 HOWARD COUNTY, MARYLAND
 Director of Public Works: *W. E. Nunn* 3/20/79
 Chief-Bureau of Engineering: *W. O. 3-30-79*

CONTRACT NO. 2847D-W&S

PLAN OF WATER & SEWER MAINS

ELECTION DISTRICT ELLICOTT CITY NO. 2

DRAWING NO. 2 OF 5
SCALE 1\"/>



PLAN
Scale: 1" = 50'

Δ	6-26-79	Revised Plan
No.	DATE	REVISION

WHITMAN, REQUARDT & ASSOCIATES
ENGINEERS
1304 ST. PAUL ST.
BALTIMORE, MARYLAND

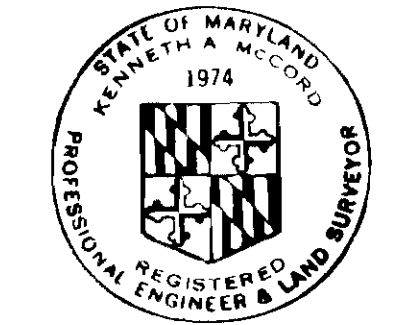
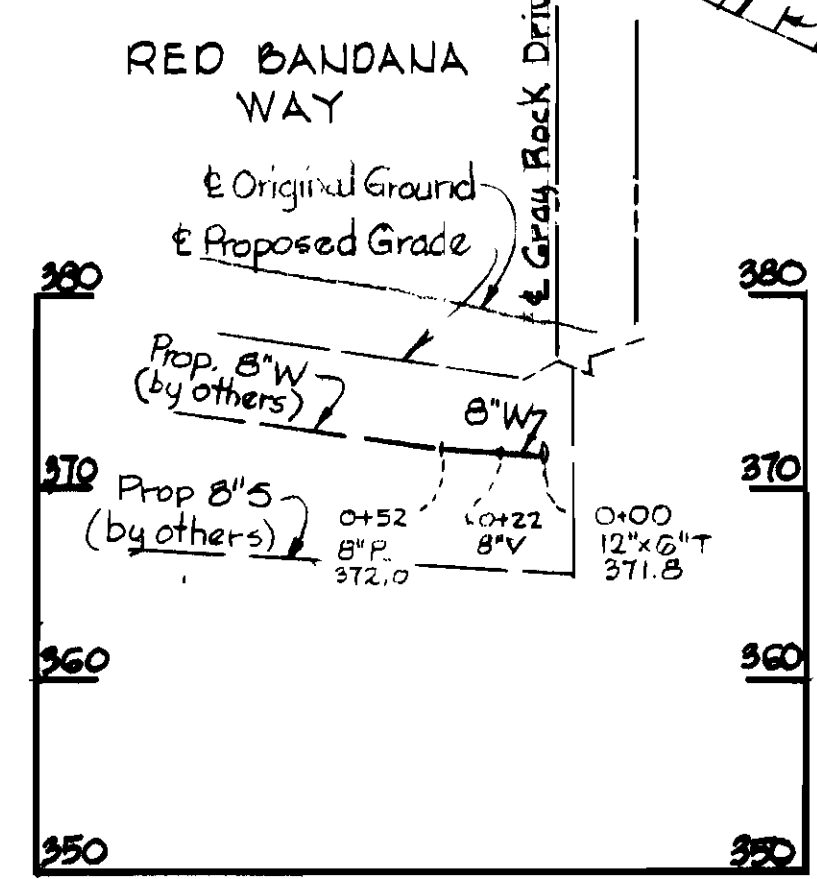
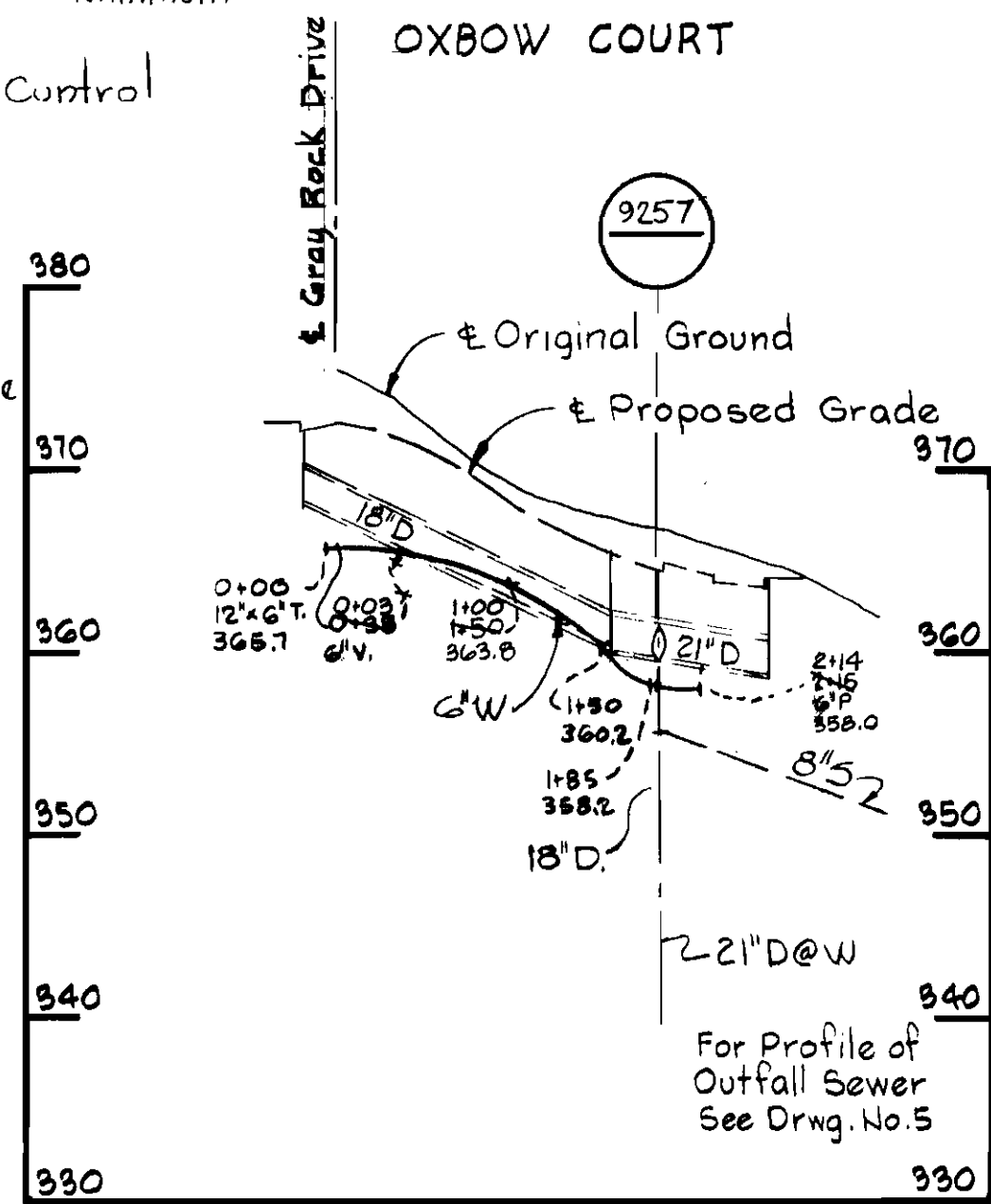
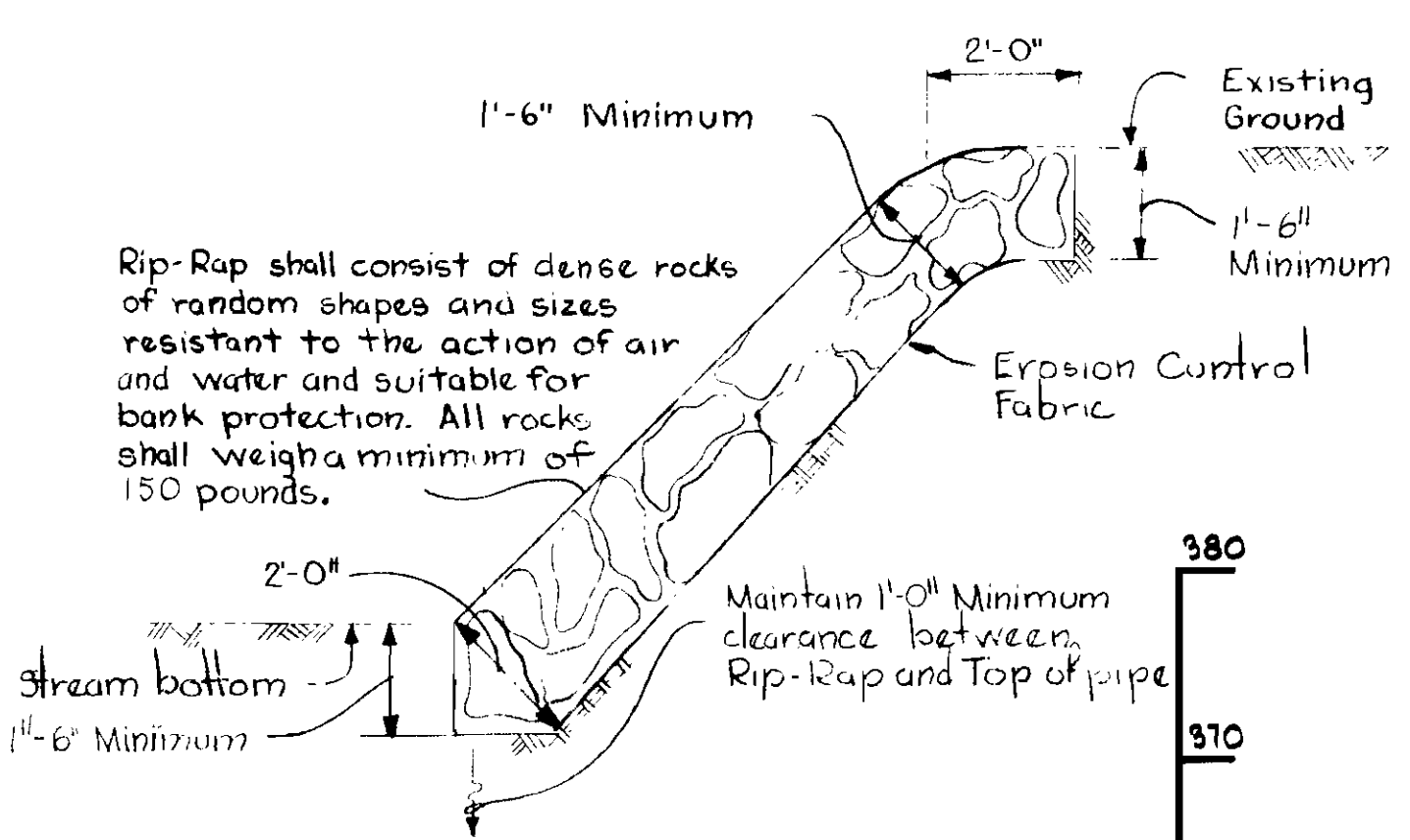
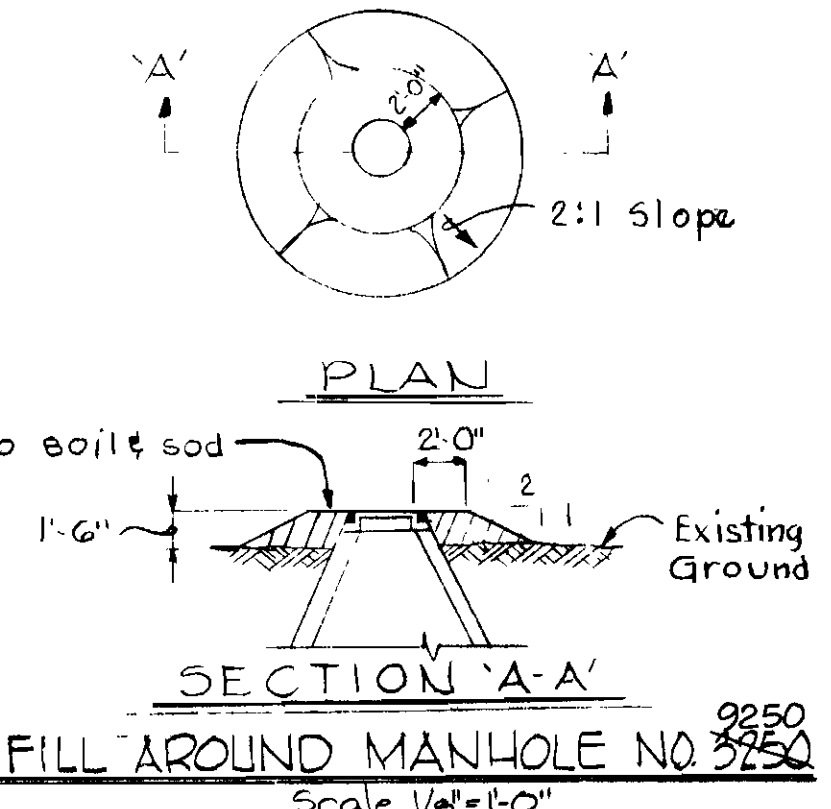
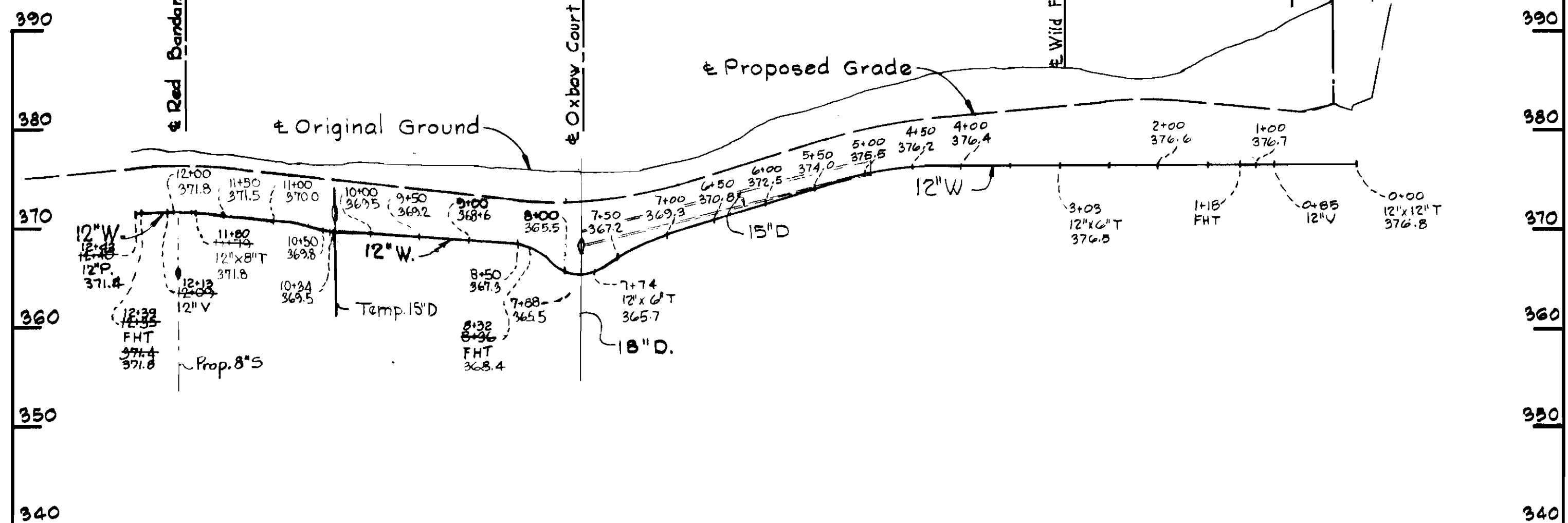
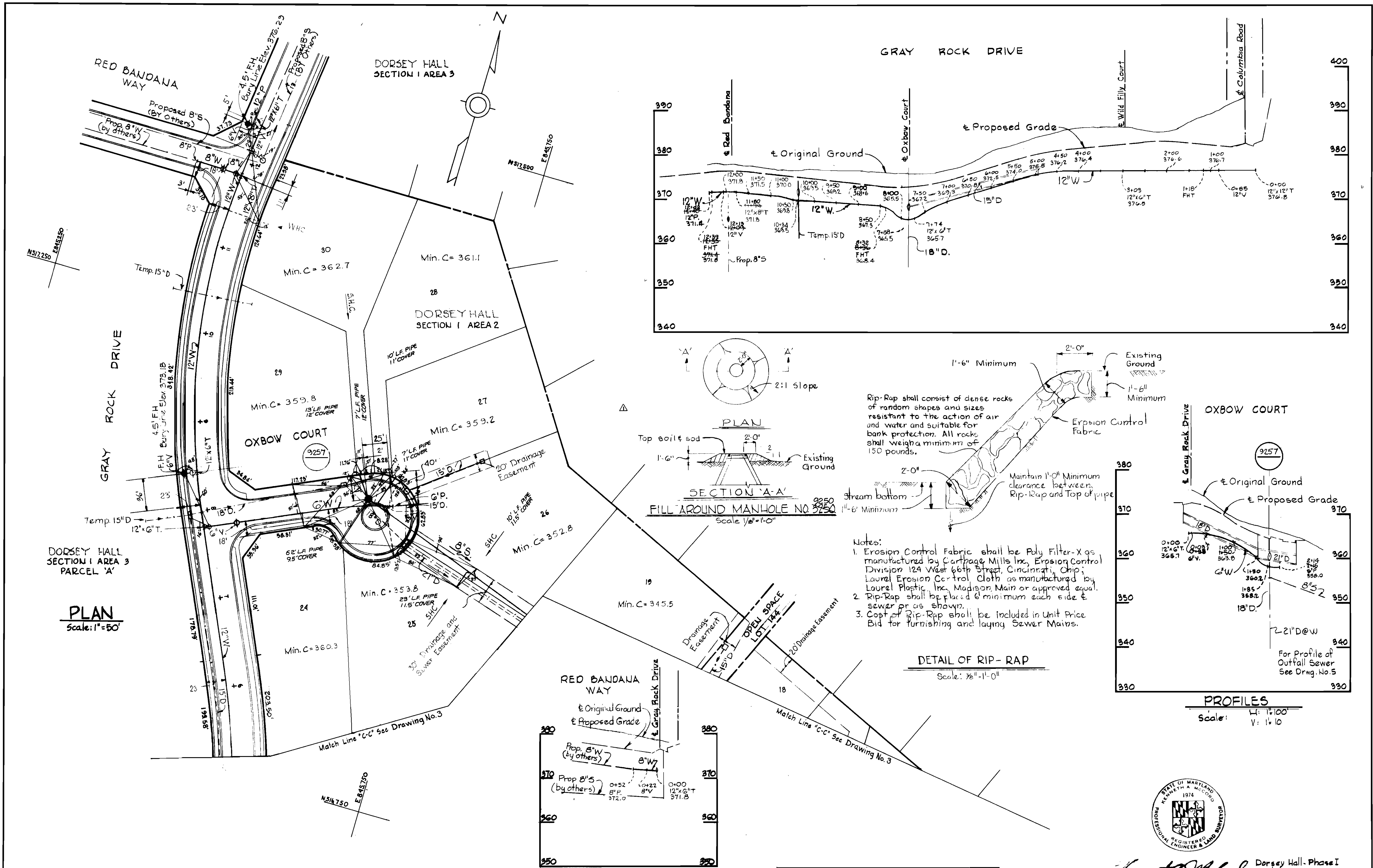
DEPARTMENT OF PUBLIC WORKS
HOWARD COUNTY, MARYLAND
John F. Nunn 3/30/79
DIRECTOR OF PUBLIC WORKS - DATE

CONTRACT NO. 2847D-W8S

PLAN OF WATER & SEWER MAINS

ELECTION DISTRICT ELLICOTT CITY NO.2

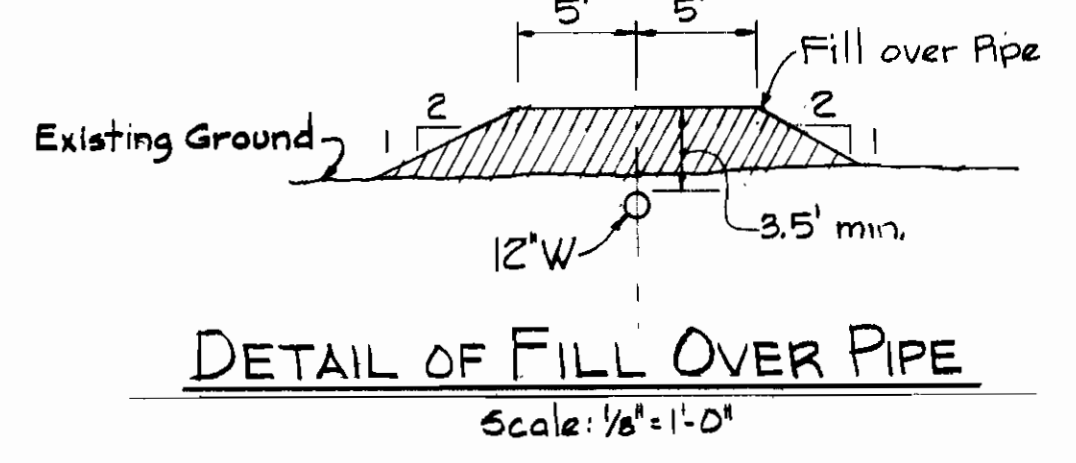
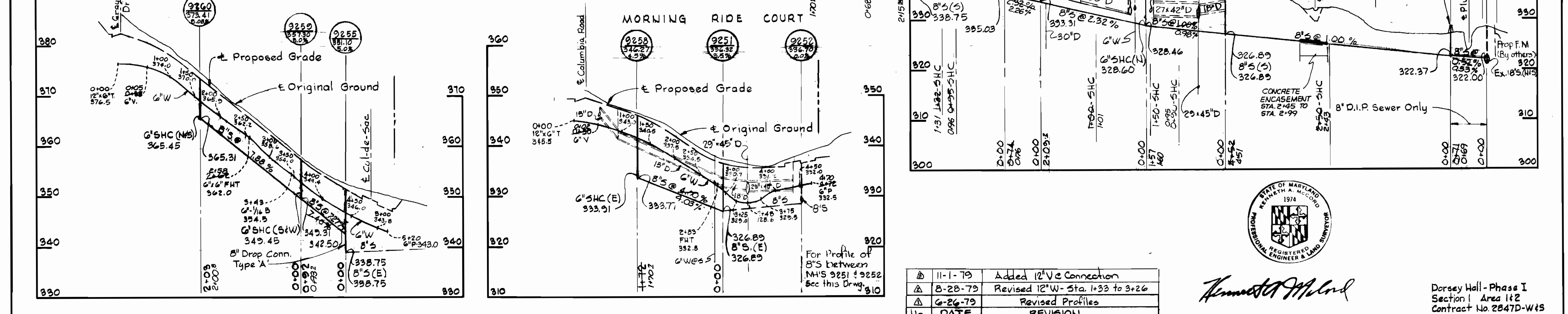
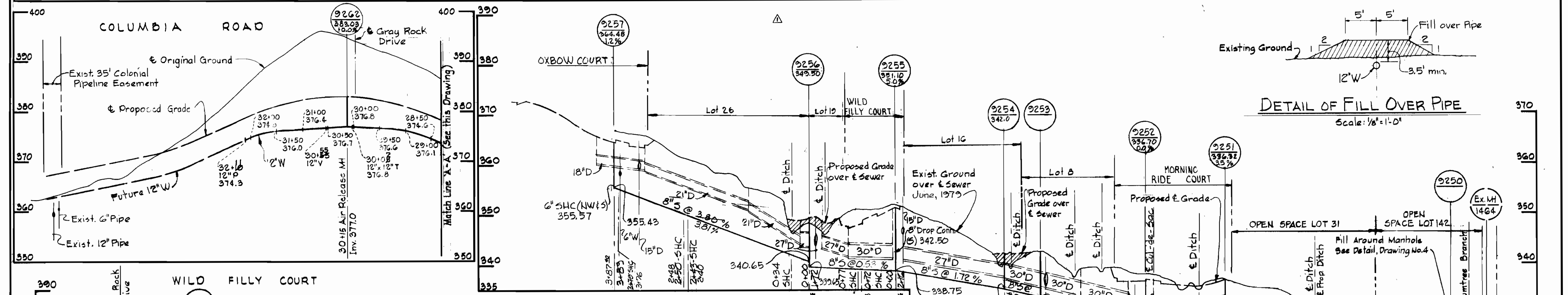
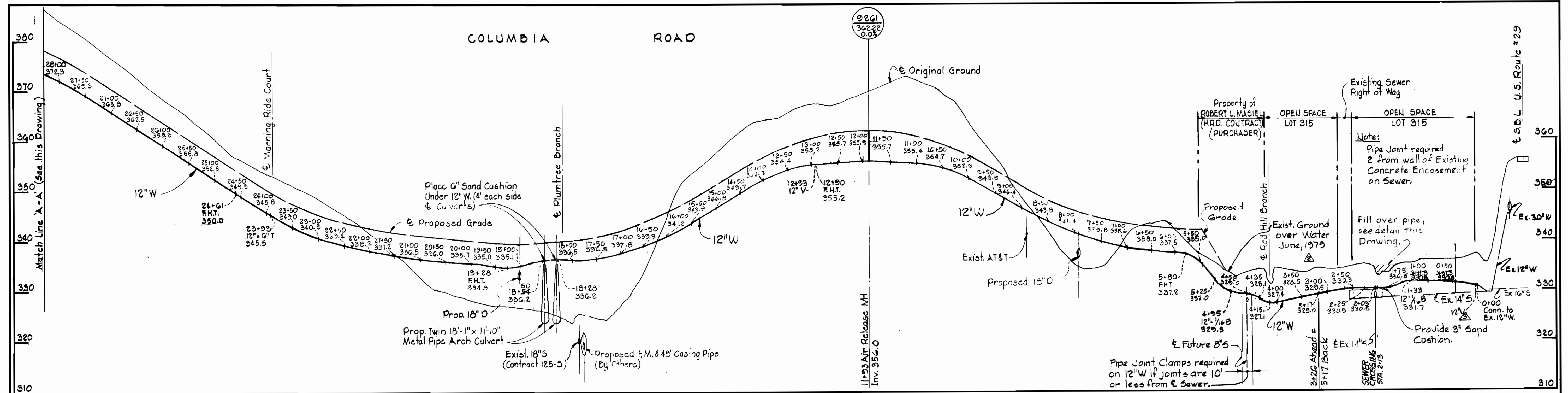
DRAWING NO. 3 OF 5
SCALE 1" = 50'



Kenneth A. McCord
 Dorsey Hall - Phase I
 Section I Area 1 & 2
 Contract No. 2847D-W15

6-26-79	Revised Plan and Profiles
No.	DATE
	REVISION

WHITMAN, REQUARDT & ASSOCIATES ENGINEERS 1304 ST. PAUL ST. BALTIMORE, MARYLAND	DEPARTMENT OF PUBLIC WORKS HOWARD COUNTY, MARYLAND Director of Public Works - DATE	CONTRACT NO. 2847D-W15 Chief-Bureau of Engineering - DATE	PLAN AND PROFILE OF WATER & SEWER MAINS	ELECTION DISTRICT ELLICOTT CITY NO. 2	DRAWING NO. 4	SCALE AS SHOWN
					OF 5	



No.	DATE	REVISION
1	11-1-79	Added 12" Vc Connection
2	8-28-79	Revised 12" W - Sta. 1+33 to 3+26
3	6-26-79	Revised Profiles



Kenneth A. McLeod

Dorsey Hall - Phase I
Section 1 Area 112
Contract No. 2847D-W15

WHITMAN, REQUARDT & ASSOCIATES
ENGINEERS
1304 ST. PAUL ST.
BALTIMORE, MARYLAND

DEPARTMENT OF PUBLIC WORKS
HOWARD COUNTY, MARYLAND
W. F. [Signature] 3-30-79
DIRECTOR OF PUBLIC WORKS - DATE
CHIEF-BUREAU OF ENGINEERING - DATE

CONTRACT NO. 2847D-W15

**PROFILE OF
WATER & SEWER MAINS**

**ELECTION DISTRICT
ELLICOTT CITY NO. 2**

**DRAWING NO. 5
OF 5**
**SCALE
H:V = 10'**